

]



Source Water Assessment

A Hydrogeologic Susceptibility and Vulnerability
Assessment for
Division of Parks, Crooked Creek Campground
Drinking Water System,
Kasilof, Alaska
PWSID # 244191
June 2003

DRINKING WATER PROTECTION PROGRAM REPORT # 634
Alaska Department of Environmental Conservation

Source Water Assessment for
Division of Parks, Crooked Creek
Campground
Drinking Water System,
Kasilof, Alaska
PWSID # 244191

By Ecology & Environment, Inc.

DRINKING WATER PROTECTION PROGRAM REPORT # 634

The Drinking Water Protection Program (DWPP) is producing Source Water Assessments in compliance with the Safe Drinking Water Act Amendments of 1996. Each assessment includes a delineation of the source water area, an inventory of potential and existing contaminant sources that may impact the water, a risk ranking for each of these contaminants, and an evaluation of the potential vulnerability of these drinking water sources.

These assessments are intended to provide public water systems owners/operators, communities, and local governments with the best available information that may be used to protect the quality of their drinking water. The assessments combine information obtained from various sources, including the U.S. Environmental Protection Agency, Alaska Department of Environmental Conservation (ADEC), public water system owners/operators, and other public information sources. The results of this assessment are subject to change if additional data becomes available. It is anticipated this assessment will be updated every five years to reflect any changes in the vulnerability and/or susceptibility of public drinking water source. If you have any additional information that may affect the results of this assessment, please contact the Program Coordinator of DWPP, (907) 269-7521.

CONTENTS

| | |
|--|---|
| Executive Summary | 1 |
| Introduction..... | 1 |
| Description of the Kasilof Area | 1 |
| Division of Parks, Crooked Creek Campground Public Drinking Water System | 2 |
| Division of Parks, Crooked Creek Campground Drinking Water Protection Area..... | 2 |
| Inventory of Potential and Existing Contaminant Sources..... | 2 |
| Ranking of Contaminant Risks | 3 |
| Vulnerability of Division of Parks, Crooked Creek Campground Drinking Water Source | 3 |
| References Cited..... | 6 |

TABLES

| | |
|---|---|
| Table 1. Definition of Zones..... | 2 |
| Table 2. Susceptibility | 4 |
| Table 3. Contaminant Risks..... | 4 |
| Table 4. Overall Vulnerability to Contamination by Category | 4 |

APPENDICES

| | |
|--|--|
| Appendix A. Division of Parks, Crooked Creek Campground Drinking Water Protection Area (Map 1) | |
| Appendix B. Contaminant Source Inventory for Division of Parks, Crooked Creek Campground (Table 1) Contaminant Source Inventory and Risk Ranking for Division of Parks, Crooked Creek Campground– Bacteria and Viruses (Table 2) Contaminant Source Inventory and Risk Ranking for Division of Parks, Crooked Creek Campground– Nitrates/Nitrites (Table 3) Contaminant Source Inventory and Risk Ranking for Division of Parks, Crooked Creek Campground– Volatile Organic Chemicals (Table 4) | |
| Appendix C. Division of Parks, Crooked Creek Campground Drinking Water Protection Area and Potential and Existing Contaminant Sources (Map 2) | |
| Appendix D. Vulnerability Analysis for Contaminant Source Inventory and Risk Ranking for Division of Parks, Crooked Creek Campground Public Drinking Water Source (Charts 1 – 8) | |

Source Water Assessment for Division of Parks, Crooked Creek Campground Source of Public Drinking Water, Kasilof, Alaska

By Ecology & Environment, Inc.

Drinking Water Protection Program Alaska Department of Environmental Conservation

Executive Summary

Division of Parks, Crooked Creek Campground is a Class B (transient/non-community) water system consisting of one well in Kasilof, Alaska. The wellhead received a susceptibility rating of **Low** and the aquifer received a susceptibility rating of **Medium**. Combining these two ratings produces a **Low** rating for the natural susceptibility of the well. Identified potential and current sources of contaminants for Division of Parks, Crooked Creek Campground public drinking water source include: roads, residential areas, septic systems, injection wells, a DEC recognized contaminated site, a campground and RV park. These identified potential and existing sources of contamination are considered sources of bacteria and viruses, nitrates and/or nitrites, and volatile organic chemicals. Overall, the public water source for Division of Parks, Crooked Creek Campground received a vulnerability rating of **Medium** for bacteria and viruses, **Medium** for nitrates and nitrites, and **Low** for volatile organic chemicals.

Introduction

The Alaska Department of Environmental Conservation (ADEC) is completing source water assessments for all public drinking water sources in the State of Alaska. The purpose of this assessment is to provide owners and/or operators, communities, and local governments with information they can use to preserve the quality of Alaska's public drinking water supplies. The results of this source water assessment can be used to decide where voluntary protection efforts are needed and feasible, and also what efforts will be most effective in reducing contaminant risks to your water system. Ecology and Environment, Inc. has been contracted to perform these assessments under the supervision of ADEC.

This source water assessment combines a review of the natural conditions at the site and the potential and existing contaminant risks. These are combined to

determine the overall vulnerability of the drinking water source to contamination.

Description of the Kasilof Area

Location

The community of Kasilof is located at mile 109 on the Sterling Highway, on the east shore of Cook Inlet on the Kenai Peninsula (see Inset of Map 1 of Appendix A).

Precipitation

The Kasilof area averages about 17 inches of precipitation per year, with approximately 52 inches of snowfall (ACRC 2002).

Topography and Drainage

The Kasilof area is home to a number of lakes, including 25-mile-long Tustumena Lake, which is connected to Cook Inlet via the northwest-trending Kasilof River. The smaller Crooked and Coal Creeks join the Kasilof from the south and north, respectively.

Groundwater Use

The majority of homes use individual water wells and septic tanks and are fully plumbed. The school operates its own well water and treatment system (ADCED 2002).

Geology and Soils

The vast majority of sediments exposed along the western side of the Kenai Peninsula and the eastern part of the upper Alaskan Peninsula along Cook Inlet are Quaternary sediments (Magoon, Adkison, and Egbert, 1976). These Quaternary sediments are from glacially-fed streams, abandoned-channel deposits, glacial moraines and alluvium from existing streams (Glass,

1996). They generally consist of a combination of sand, gravel, silt, and clay. There can be significant variation in the composition of sediment layers over relatively small areas. As a consequence, aquifers in the area may be either confined or unconfined, depending on the local sequence of sediment layers (Glass, 1996). The Tertiary-aged Sterling Formation is exposed from approximately Kasilof to Happy Valley, and is composed of sandstone, siltstone and some coal (Magoon, Adkison, and Egbert, 1976).

Division of Parks, Crooked Creek Campground Public Drinking Water System

Division of Parks, Crooked Creek Campground is a Class B (transient/non-community) water system. The system consists of one well located on Coho Loop road in Kasilof, Alaska.

The well was installed October 10, 1987 to a depth of 200 feet. The Sanitary Survey on 8/2/99 does not describe the condition of the sanitary survey, however, it is assumed to be intact. A properly installed sanitary seal may provide protection against contaminants from entering the source waters at the well casing. The well is properly drained and grouted. Proper grouting provides added protection against contaminants traveling along the well casing and into source waters. The well operates from May 1 through September and serves approximately 250 non-residents.

Division of Parks, Crooked Creek Campground Drinking Water Protection Area

In order to evaluate whether a drinking water source is at risk, we must first evaluate what are the most likely pathways for surface contamination to reach the groundwater. Some areas are more likely to allow contamination to reach the well than others. These areas are determined by looking at the characteristics of the soil, groundwater, aquifer, and well.

The most probable area for contamination to reach the drinking water well is the area that contributes water to the well, the groundwater recharge area. This area is designated as the Drinking Water Protection Area (DWPA). Because a release of contaminants within the DWPA is most likely to impact the drinking water well, this area will serve as the focus for voluntary protection efforts.

An analytical calculation was used to determine the size and shape of the DWPA. The input parameters describing the attributes of this aquifer were derived

from Freeze and Cherry (1979), Glass (1996), and from a review of well logs in the area found in the Alaska Department of Natural Resources and United States Geological Survey databases. Additional methods were also used to take into account any uncertainties in groundwater flow and aquifer characteristics to arrive at a meaningful DWPA (Please refer to the Guidance Manual for Class B Water Systems for additional information).

The DWPAs established for wells by the ADEC are separated into four zones. These zones correspond to differences in the time-of-travel (TOT) of the water moving through the aquifer to the well. The time of travel for contaminants within the water varies and is dependent on the physical and chemical characteristics of each contaminant. The following is a summary of the four DWPA zones and the calculated time-of-travel for each:

Table 1. Definition of Zones

| Zone | Definition |
|-------------|---|
| A | ¼ the distance to the 2-year time-of-travel |
| B | Less than the 2-year time-of-travel |
| C | Less than the 5-year time-of-travel |
| D | Less than the 10 year time-of-travel |

As an example, water moving through the aquifer in Zone B will most likely reach the well in less than 2 years from the time it crosses the outer limit of Zone B.

Zone A also incorporates the area downgradient from the well to take into account the area of the aquifer that is influenced by pumping of the well. Water within the aquifer in Zone A will reach the well in several hours to several months.

Inventory of Potential and Existing Contaminant Sources

The Drinking Water Protection Program has completed an inventory of potential and existing sources of contamination within the Division of Parks, Crooked Creek Campground DWPA. This inventory was completed through a search of agency records and other publicly available information. Potential sources of contamination to the drinking water aquifer include a wide range of categories and types. Potential drinking water contaminants are found within agricultural, residential, commercial, and industrial areas, but can also occur within areas that have little or no development.

For the basis of all Class B water system assessments, three categories of drinking water contaminants were inventoried. They include:

- Bacteria and viruses;
- Nitrates and/or nitrites; and
- Volatile organic chemicals.

Inventoried potential sources of contamination within the drinking water protection area were associated with residential and light industrial type activities. The sources are displayed on Map 2 of Appendix C and summarized in the tables in Appendix B.

Ranking of Contaminant Risks

Once the potential and existing sources of contamination have been identified, they are sorted and ranked according to what type and level of risk they represent. Ranking of contaminant risks for a “potential” or “existing” source of contamination is a function of toxicity and volumes of specific contaminants associated with that source. Further, contaminant risks are a function of the number and density of those types of contaminant sources as well as the proximity of those sources to the well. Rankings include:

- Low;
- Medium;
- High; and
- Very High.

The time-of-travel for contaminants within the water varies and is dependent on the physical and chemical characteristics of each contaminant. Bacteria and Viruses are only inventoried in Zones A and B because of their short life span. Only “Very High” and “High” rankings are inventoried within the outer Zone D due to the probability of contaminant dilution by the time the contaminants get to the well.

Tables 2 through 4 in Appendix B contain the ranking of potential and existing sources of contamination with respect to bacteria and viruses, nitrates and/or nitrites, and volatile organic chemicals.

Vulnerability of Division of Parks, Crooked Creek Campground Drinking Water Source

Vulnerability of a drinking water source to contamination is a combination of two factors:

- Natural susceptibility; and
- Contaminant risks.

Appendix D contains eight charts, which together form the ‘Vulnerability Analysis’ for a source water assessment for a public drinking water source. Chart 1 analyzes the ‘Susceptibility of the Wellhead’ to contamination by looking at the construction of the well and its surrounding area. Chart 2 analyzes the ‘Susceptibility of the Aquifer’ to contamination by looking at the naturally occurring attributes of the water source and influences on the groundwater system that might lead to contamination. Chart 3 analyzes ‘Contaminant Risks’ for the drinking water source with respect to bacteria and viruses. The ‘Contaminant Risks’ portion of the analysis considers potential sources of contaminants as well as a review of contamination that has or may have occurred, but has not arrived or been detected at the well. Lastly, Chart 4 contains the ‘Vulnerability Analysis for Bacteria and Viruses’. Charts 5 through 8 contain the Contaminant Risks and Vulnerability Analyses for nitrates and nitrites and volatile organic chemicals, respectively.

A score for the Natural Susceptibility is achieved by analyzing the properties of the well and the aquifer.

$$\begin{array}{r}
 \text{Susceptibility of the Wellhead (0 – 25 Points)} \\
 \text{(Chart 1 of Appendix D)} \\
 + \\
 \text{Susceptibility of the Aquifer (0 – 25 Points)} \\
 \text{(Chart 2 of Appendix D)} \\
 = \\
 \text{Natural Susceptibility (Susceptibility of the Well)} \\
 \text{(0 – 50 Points)}
 \end{array}$$

A ranking is assigned for the Natural Susceptibility according to the point score:

| Natural Susceptibility Ratings | |
|--------------------------------|-----------|
| 40 to 50 pts | Very High |
| 30 to < 40 pts | High |
| 20 to < 30 pts | Medium |
| < 20 pts | Low |

The well for Division of Parks, Crooked Creek Campground is completed in a confined aquifer. Confined aquifers are somewhat protected from migration of water from the surface by an overlying low-permeability layer, such as a clay. However, contaminants at the surface have the potential to impact this aquifer adversely because wells penetrating the aquifer can act as conduits. The confining layers in this area can be somewhat discontinuous, which also increases the susceptibility of the aquifer. Table 2 shows the Susceptibility scores and ratings for Division of Parks, Crooked Creek Campground (see Charts 1 and 2).

Table 2. Susceptibility

| | Score | Rating |
|--------------------------------|--------------|---------------|
| Susceptibility of the Wellhead | 0 | Low |
| Susceptibility of the Aquifer | 13 | Medium |
| Natural Susceptibility | 13 | Low |

Contaminant risks to a drinking water source depend on the type, number or density, and distribution of contaminant sources. This score has been derived from an examination of existing or historical contamination that has been detected at the drinking water source through routine sampling. It also evaluates potential sources of contamination. Flow charts are used to assign a point score, and ratings are assigned in the same way as for the natural susceptibility.

| Contaminant Risk Ratings | |
|---------------------------------|-----------|
| 40 to 50 pts | Very High |
| 30 to < 40 pts | High |
| 20 to < 30 pts | Medium |
| < 20 pts | Low |

Table 3 summarizes the Contaminant Risks for each category of drinking water contaminants (see Charts 3, 5, and 7).

Table 3. Contaminant Risks

| Category | Score | Rating |
|----------------------------|--------------|---------------|
| Bacteria and Viruses | 32 | High |
| Nitrates and/or Nitrites | 37 | High |
| Volatile Organic Chemicals | 12 | Low |

Finally, an overall vulnerability score is assigned for each water system by combining each of the contaminant risk scores with the natural susceptibility score:

$$\begin{array}{r}
 \text{Natural Susceptibility (0 – 50 points)} \\
 + \\
 \text{Contaminant Risks (0 – 50 points)} \\
 = \\
 \text{Vulnerability of the} \\
 \text{Drinking Water Source to Contamination (0 – 100).}
 \end{array}$$

Again, rankings are assigned according to a point score:

| Overall Vulnerability Ratings | |
|--------------------------------------|-----------|
| 80 to 100 pts | Very High |
| 60 to < 80 pts | High |
| 40 to < 60 pts | Medium |
| < 40 pts | Low |

Table 4 contains the overall vulnerability scores (0 – 100) and ratings for each of the three categories of drinking water contaminants. Note: scores are rounded off to the nearest five (see Charts 4, 6, and 8).

Table 4. Overall Vulnerability to Contamination by Category

| Category | Score | Rating |
|----------------------------|--------------|---------------|
| Bacteria and Viruses | 45 | Medium |
| Nitrates and Nitrites | 50 | Medium |
| Volatile Organic Chemicals | 25 | Low |

Bacteria and Viruses

The contaminant risk for bacteria and viruses is High, with the injection wells representing the greatest risk to the drinking water well (See Chart 3 – Contaminant Risks for Bacteria and Viruses in Appendix D).

After combining the contaminant risk for bacteria and viruses with the natural susceptibility of the well, the overall vulnerability of the well to contamination by bacteria and viruses is Medium.

Nitrates and Nitrites

The contaminant risk for nitrates and nitrites is High with the injection wells representing the highest risk to this source of public drinking water (See Chart 5 - Contaminant Risks for Nitrates and/or Nitrites in Appendix D). Nitrates are very mobile, moving at approximately the same rate as water.

The last five years’ sampling history for Division of Parks, Crooked Creek Campground public water source indicates the most recent concentration detected was 1.000 mg/L on 8/16/00, which represents 10% of the Maximum Contaminant Level (MCL). While nitrates and nitrites can occur naturally in groundwater, a level of 20% of the MCL or more is considered to be due to manmade sources. Water with levels of nitrates and nitrites below 100% of the MCL is considered safe to drink by ADEC. After combining the contaminant risk for nitrates and nitrites with the natural susceptibility of the well, the overall vulnerability of the well to contamination by nitrates and nitrites is Medium.

Volatile Organic Chemicals

The contaminant risk for volatile organic chemicals is Low with the roads, residential areas, septic systems, injection wells and a DEC recognized contaminated site, campground and RV park representing the risks for volatile organic chemicals (See Chart 7 – Contaminant Risks for Volatile Organic Chemicals in Appendix D).

Residents in the area typically heat their homes with various types of on-site fuel sources, including propane and heating oil stored in aboveground or underground storage tanks. Although this report does not address heating oil tanks (unless their location is known), they can pose a risk of volatile organic chemical contamination to drinking water sources. The most common causes of fuel leaks of these heating oil systems are overfilling the tank, ruptured fuel lines, leaking storage tanks, damaged or faulty valves and vandalism. Secondary containment around the tank and regular system maintenance can help prevent many of these harmful fuel leaks and help protect the drinking water supply.

Class B water systems generally are not required to test for volatile organic chemicals. After combining the potential contaminant risk for volatile organic chemicals with the natural susceptibility of the well, the overall vulnerability of the well to contamination by volatile organic chemicals is Low.

References Cited

Alaska Climate Research Center (ACRC), 2002, Alaskan Climatology Data [WWW document]. URL <http://climate.gi.alaska.edu/climatology/data.html>.

Alaska Department of Community and Economic Development (ADCED), 2002, Alaska Community Database [WWW database]. URL http://www.dced.state.ak.us/cbd/commdb/CF_BLOCK.cfm

Freeze, R.A. and Cherry, J.A., 1979, *Groundwater*, Upper Saddle River, NJ: Prentice Hall, Inc.

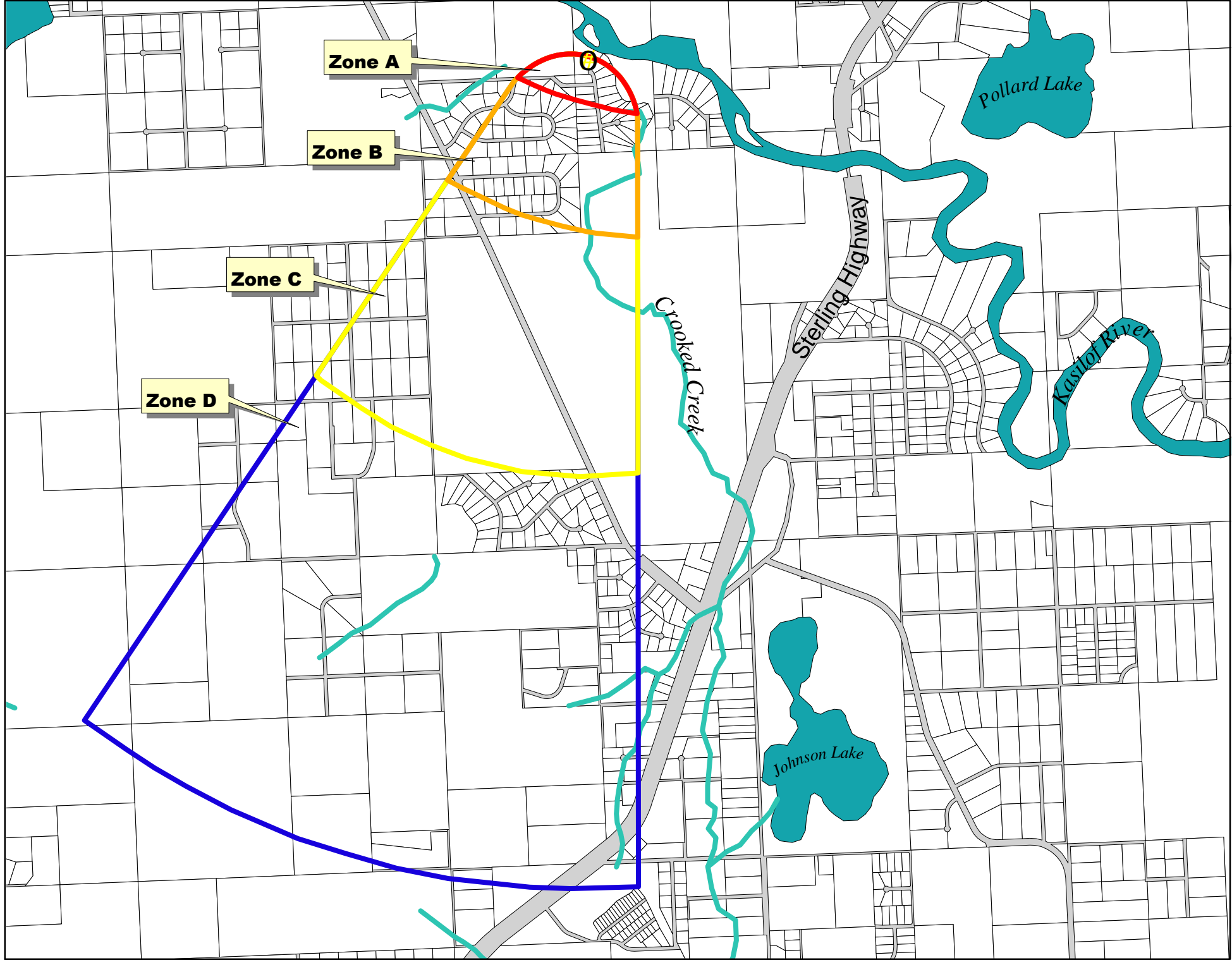
Glass, R.L., 1996, Ground-water conditions and quality in the western part of Kenai Peninsula, southcentral Alaska, Prepared in cooperation with the Alaska Department of Natural Resources, Kenai Peninsula Borough, Kenai Soil and Water Conservation District, U.S. Geological Survey, Anchorage, AK, and Branch of Information Services, Denver, CO.

Magoon, L. B., W.L. Adkison, and R. M. Egbert, 1976, *Map Showing Geology, Wildcat Wells, Tertiary Plant Fossil Localities, K-AR Age Dates, And Petroleum Operations, Cook Inlet Area, Alaska*, Department of the Interior, U.S. Geological Survey, Reston, VA.

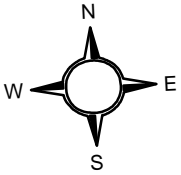
APPENDIX A

Division of Parks, Crooked Creek Campground Drinking Water Protection Area (Map 1)

Drinking Water Protection Area for Division of Parks-Crooked Creek Campground



- ⦿ Div Parks Crooked Creek C/G
- ▭ Zone A (Few Months Travel Time)
- ▭ Zone B (Less Than 2 Years Travel Time)
- ▭ Zone C (Less Than 5 Years Travel Time)
- ▭ Zone D (Less Than 10 Years Travel Time)



PWSID 244191.001

Map 1

APPENDIX B

Contaminant Source Inventory and Risk Ranking for Division of Parks, Crooked Creek Campground (Tables 1-4)

Table 1

**Contaminant Source Inventory for
Division of Parks Crooked Creek Campground**

PWSID 244191.001

| Contaminant Source Type | Contaminant Source ID | CS ID tag | Zone | Location | Map Number | Comments |
|---|------------------------------|------------------|-------------|---|-------------------|---|
| Residential Areas | R01 | R1-1 | A | | 2 | 1.6 acres |
| Septic systems (serves one single-family home) | R02 | R2-1 | A | | 2 | |
| Highways and roads, dirt/gravel | X24 | X24-1 | A | Access Rd | 2 | |
| Highways and roads, dirt/gravel | X24 | X24-2 | A | Trespass Rd | 2 | |
| Campgrounds and RV Parks | X35 | X35-1 | A | Divison of Parks Crooked Creek Campground | 2 | |
| Campgrounds and RV Parks | X35 | X35-2 | A | Crooked Creek RV Park | 2 | |
| Injection wells (Class V) Large-Capacity Septic System (Drainfield Disposal Method) | D10 | D10-1 | B | | 2 | |
| Residential Areas | R01 | R1-2 | B | | 2 | 21 acres |
| Septic systems (serves one single-family home) | R02 | R2-2--9 | B | | 2 | |
| Highways and roads, dirt/gravel | X24 | X24-3-8 | B | | 2 | |
| Residential Areas | R01 | R1-3 | C | | 2 | 40 acres |
| Septic systems (serves one single-family home) | R02 | R2-10--16 | C | | 2 | |
| Contaminated sites, DEC recognized, non-Superfund, non-RCRA | U04 | U4-1 | C | | 2 | Thrapp #1, RecKey 1989230913006. Lead and copper salvaged by burning in open fires. |
| Highways and roads, dirt/gravel | X24 | X24-9-13 | C | | 2 | |

Table 2

*Contaminant Source Inventory and Risk Ranking for
Division of Parks Crooked Creek Campground
Sources of Bacteria and Viruses*

PWSID 244191.001

| <i>Contaminant Source Type</i> | <i>Contaminant Source ID</i> | <i>CS ID tag</i> | <i>Zone</i> | <i>Risk Ranking for Analysis</i> | <i>Location</i> | <i>Map Number</i> | <i>Comments</i> |
|---|------------------------------|------------------|-------------|----------------------------------|---|-------------------|-----------------|
| Residential Areas | R01 | R1-1 | A | Low | | 2 | 1.6 acres |
| Septic systems (serves one single-family home) | R02 | R2-1 | A | Low | | 2 | |
| Highways and roads, dirt/gravel | X24 | X24-1 | A | Low | Access Rd | 2 | |
| Highways and roads, dirt/gravel | X24 | X24-2 | A | Low | Trespass Rd | 2 | |
| Campgrounds and RV Parks | X35 | X35-1 | A | Low | Divison of Parks Crooked Creek Campground | 2 | |
| Campgrounds and RV Parks | X35 | X35-2 | A | Low | Crooked Creek RV Park | 2 | |
| Injection wells (Class V) Large-Capacity Septic System (Drainfield Disposal Method) | D10 | D10-1 | B | High | | 2 | |
| Residential Areas | R01 | R1-2 | B | Low | | 2 | 21 acres |
| Septic systems (serves one single-family home) | R02 | R2-2--9 | B | Low | | 2 | |
| Highways and roads, dirt/gravel | X24 | X24-3-8 | B | Low | | 2 | |

Table 3

*Contaminant Source Inventory and Risk Ranking for
Division of Parks Crooked Creek Campground
Sources of Nitrates/Nitrites*

PWSID 244191.001

| <i>Contaminant Source Type</i> | <i>Contaminant Source ID</i> | <i>CS ID tag</i> | <i>Zone</i> | <i>Risk Ranking for Analysis</i> | <i>Location</i> | <i>Map Number</i> | <i>Comments</i> |
|---|------------------------------|------------------|-------------|----------------------------------|---|-------------------|-----------------|
| Residential Areas | R01 | R1-1 | A | Low | | 2 | 1.6 acres |
| Septic systems (serves one single-family home) | R02 | R2-1 | A | Low | | 2 | |
| Highways and roads, dirt/gravel | X24 | X24-1 | A | Low | Access Rd | 2 | |
| Highways and roads, dirt/gravel | X24 | X24-2 | A | Low | Trespass Rd | 2 | |
| Campgrounds and RV Parks | X35 | X35-1 | A | Low | Divison of Parks Crooked Creek Campground | 2 | |
| Campgrounds and RV Parks | X35 | X35-2 | A | Low | Crooked Creek RV Park | 2 | |
| Injection wells (Class V) Large-Capacity Septic System (Drainfield Disposal Method) | D10 | D10-1 | B | High | | 2 | |
| Residential Areas | R01 | R1-2 | B | Low | | 2 | 21 acres |
| Septic systems (serves one single-family home) | R02 | R2-2--9 | B | Low | | 2 | |
| Highways and roads, dirt/gravel | X24 | X24-3-8 | B | Low | | 2 | |
| Residential Areas | R01 | R1-3 | C | Low | | 2 | 40 acres |
| Septic systems (serves one single-family home) | R02 | R2-10--16 | C | Low | | 2 | |
| Highways and roads, dirt/gravel | X24 | X24-9-13 | C | Low | | 2 | |

Table 4

*Contaminant Source Inventory and Risk Ranking for
Division of Parks Crooked Creek Campground
Sources of Volatile Organic Chemicals*

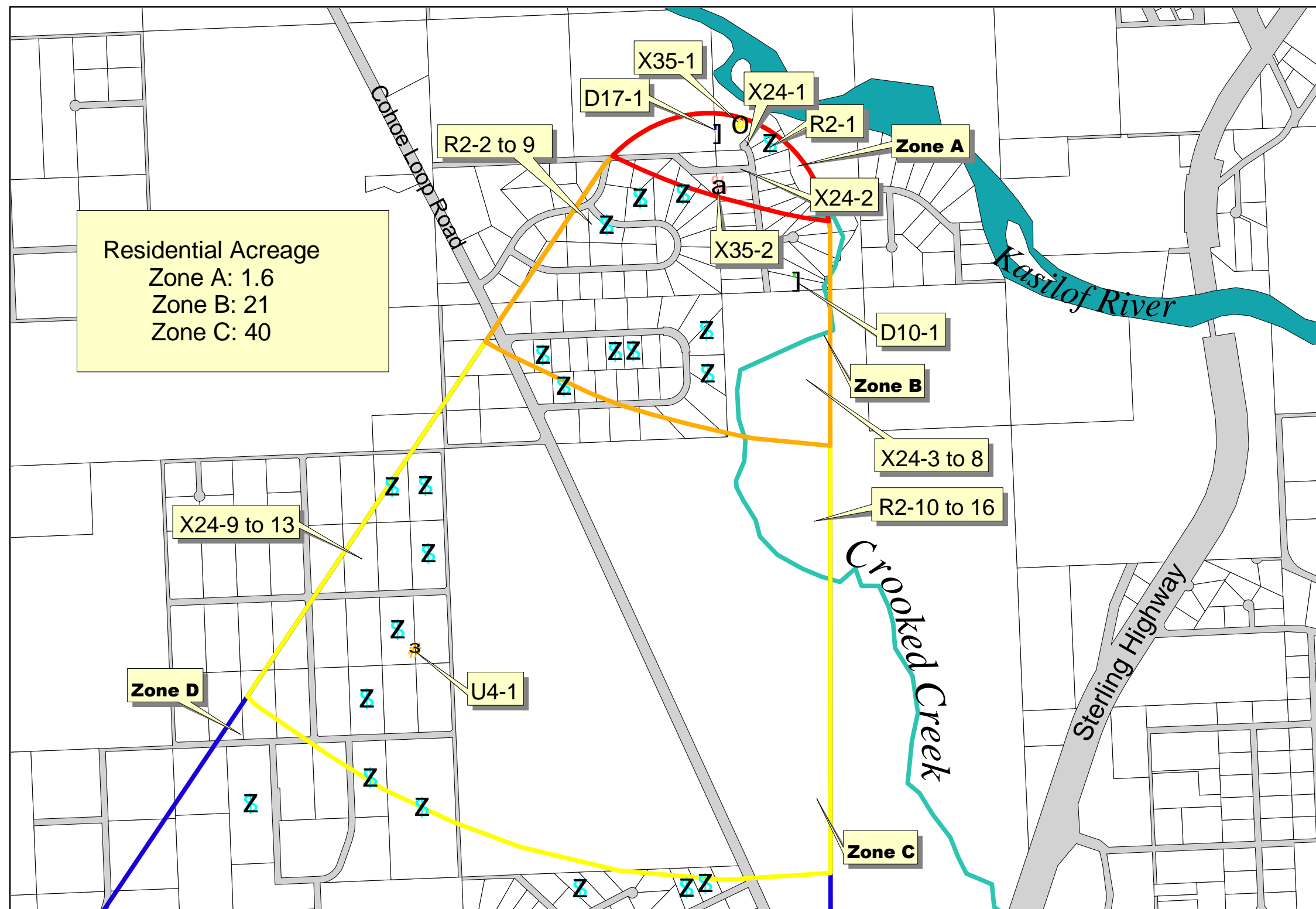
PWSID 244191.001

| <i>Contaminant Source Type</i> | <i>Contaminant Source ID</i> | <i>CS ID tag</i> | <i>Zone</i> | <i>Risk Ranking for Analysis</i> | <i>Location</i> | <i>Map Number</i> | <i>Comments</i> |
|---|------------------------------|------------------|-------------|----------------------------------|---|-------------------|---|
| Residential Areas | R01 | R1-1 | A | Low | | 2 | 1.6 acres |
| Septic systems (serves one single-family home) | R02 | R2-1 | A | Low | | 2 | |
| Highways and roads, dirt/gravel | X24 | X24-1 | A | Low | Access Rd | 2 | |
| Highways and roads, dirt/gravel | X24 | X24-2 | A | Low | Trespass Rd | 2 | |
| Campgrounds and RV Parks | X35 | X35-1 | A | Low | Divison of Parks Crooked Creek Campground | 2 | |
| Campgrounds and RV Parks | X35 | X35-2 | A | Low | Crooked Creek RV Park | 2 | |
| Injection wells (Class V) Large-Capacity Septic System (Drainfield Disposal Method) | D10 | D10-1 | B | Low | | 2 | |
| Residential Areas | R01 | R1-2 | B | Low | | 2 | 21 acres |
| Septic systems (serves one single-family home) | R02 | R2-2--9 | B | Low | | 2 | |
| Highways and roads, dirt/gravel | X24 | X24-3-8 | B | Low | | 2 | |
| Residential Areas | R01 | R1-3 | C | Low | | 2 | 40 acres |
| Septic systems (serves one single-family home) | R02 | R2-10--16 | C | Low | | 2 | |
| Contaminated sites, DEC recognized, non-Superfund, non-RCRA | U04 | U4-1 | C | Low | | 2 | Thrapp #1, RecKey 1989230913006. Lead and copper salvaged by burning in open fires. |
| Highways and roads, dirt/gravel | X24 | X24-9-13 | C | Low | | 2 | |

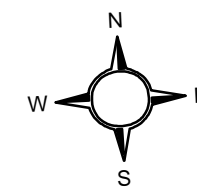
APPENDIX C

Division of Parks, Crooked Creek Campground Drinking Water Protection Area and Potential and Existing Contaminant Sources (Map 2)

Drinking Water Protection Area for Division of Parks Crooked Creek Campground and Existing and Potential Sources of Contamination



- Water Sources**
- Div Parks Crooked Creek C/G
- Crooked Creek RV Park
- Septics**
- Injection Wells-D10
- Septic Systems-R2
- Contaminant Sites**
- Pit Toilets-D17
- DEC Recognized-U04
- Zone A (Few Months Travel Time)
- Zone B (Less Than 2 Years Travel Time)
- Zone C (Less Than 5 Years Travel Time)
- Zone D (Less Than 10 Years Travel Time)



1000 0 1000 2000 3000 4000 5000 6000 Feet

PWSID 244191.001

Map 2

APPENDIX D

Vulnerability Analysis for Division of Parks, Crooked Creek Campground Public Drinking Water Source (Charts 1-8)

Chart 1. Susceptibility of the wellhead - Division of Parks, Crooked Creek Campground

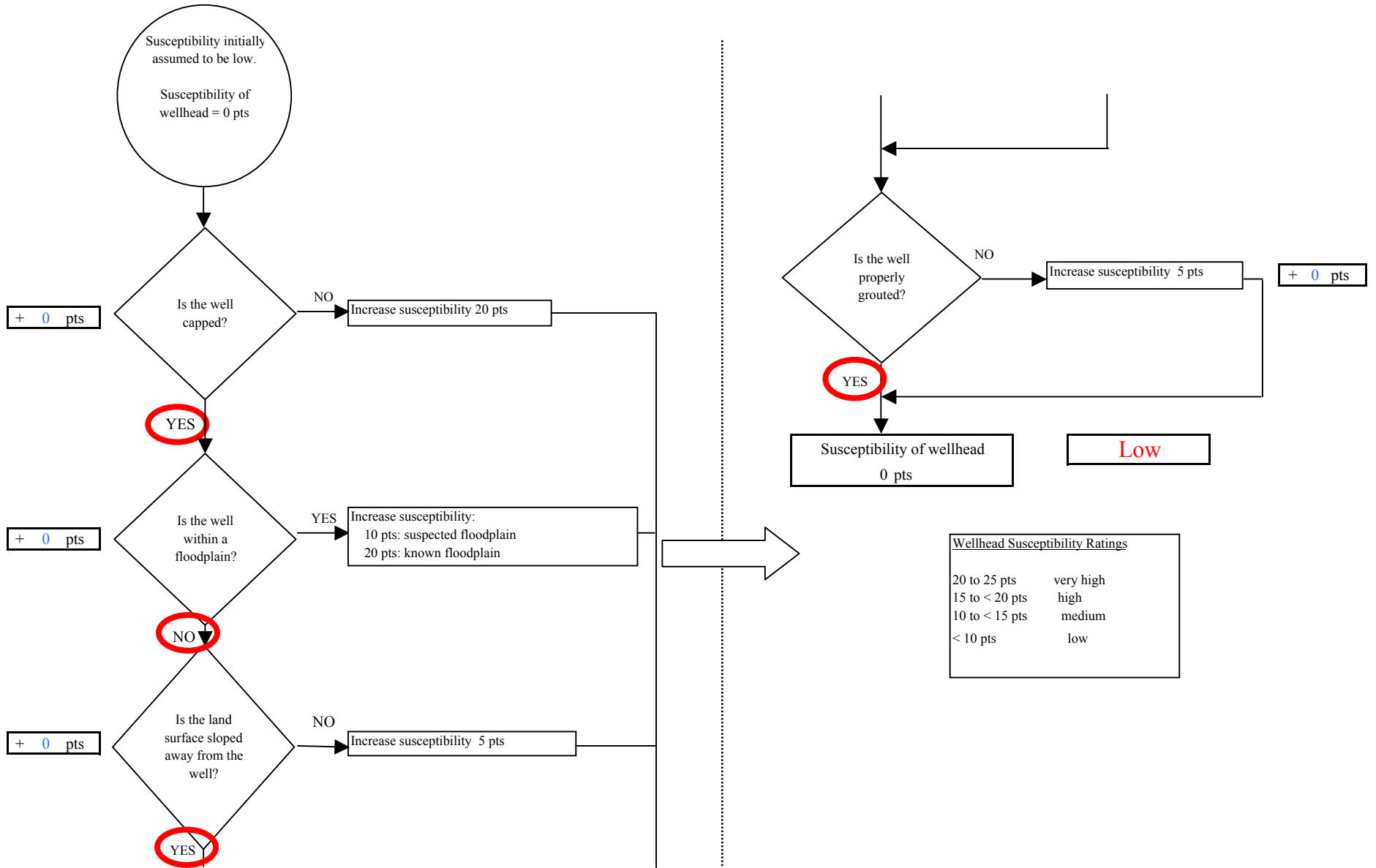


Chart 2. Susceptibility of the aquifer - Division of Parks, Crooked Creek Campground

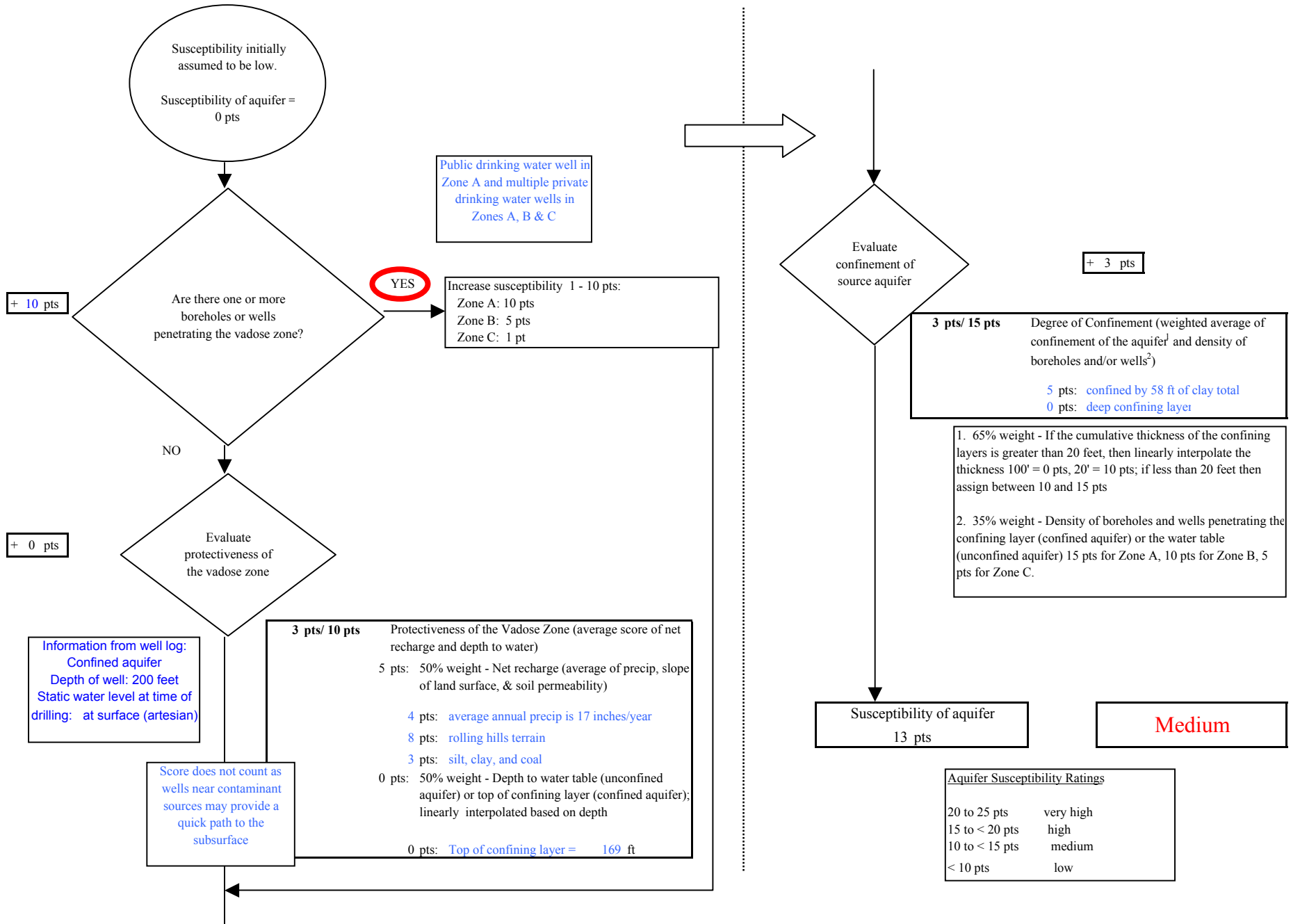


Chart 3. Contaminant risks for *Division of Parks, Crooked Creek Campground - Bacteria & Viruses*

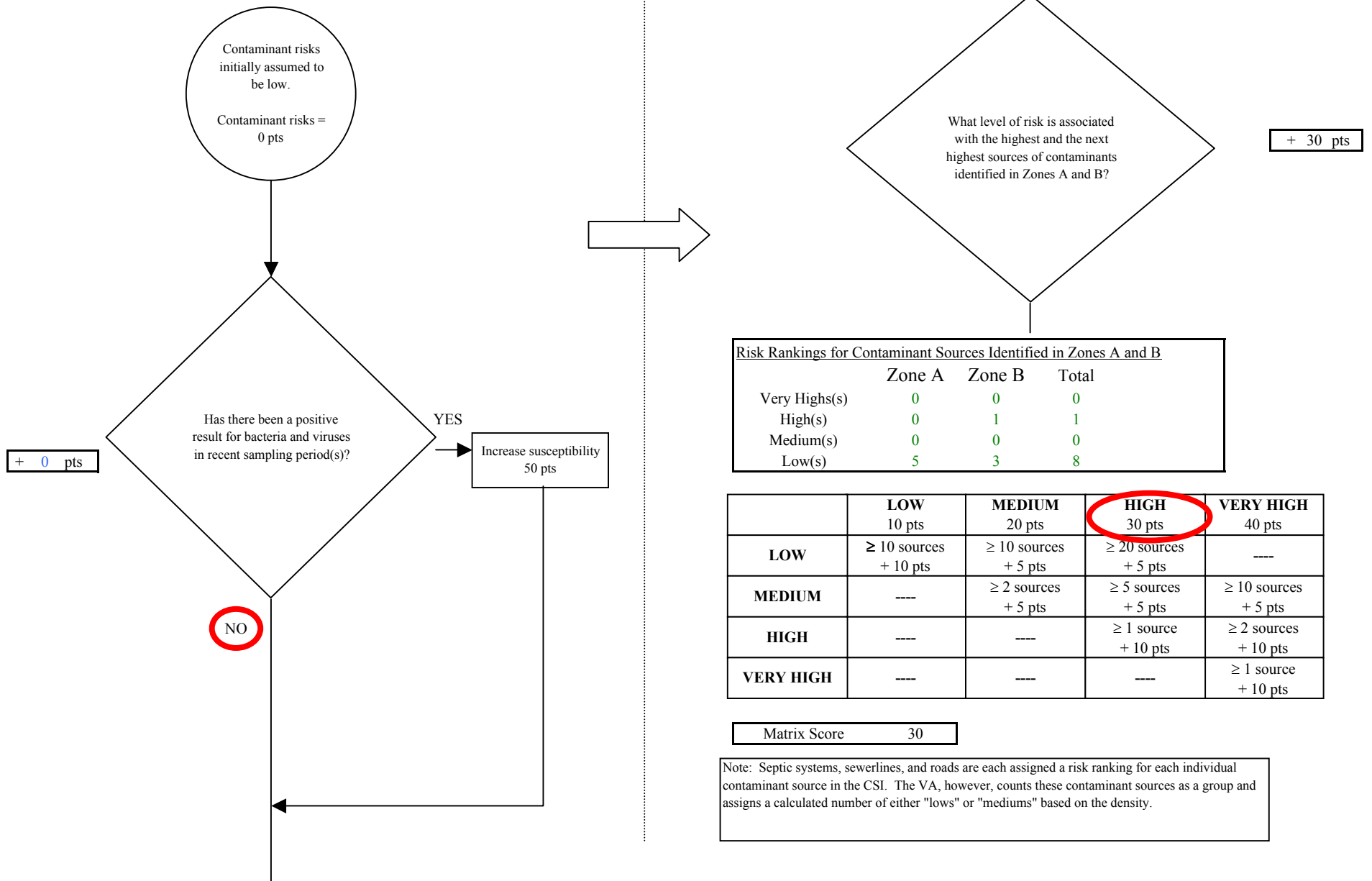


Chart 3. Contaminant risks for Division of Parks, Crooked Creek Campground - Bacteria & Viruses

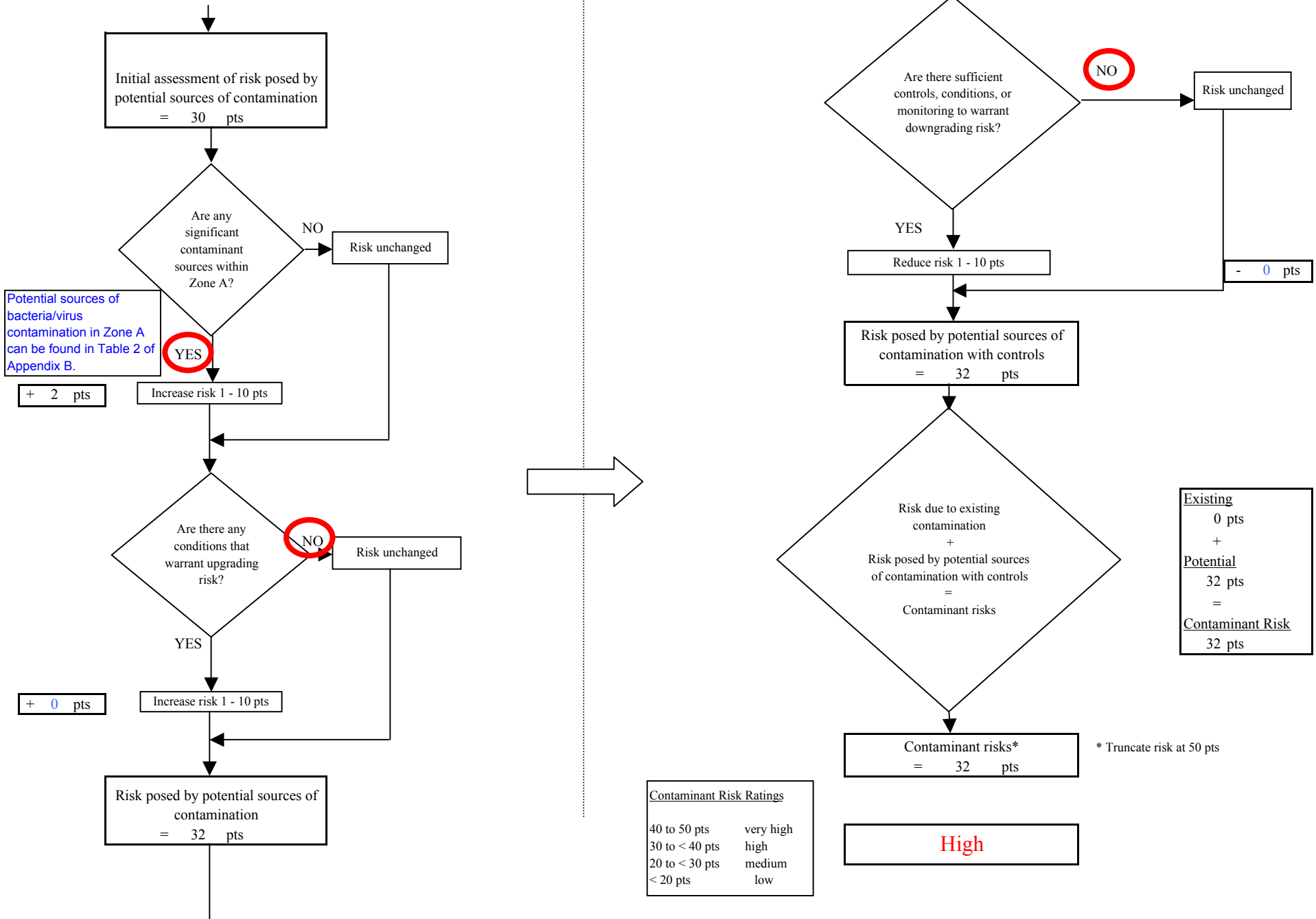


Chart 4. Vulnerability analysis for Division of Parks, Crooked Creek Campground - Bacteria & Viruses

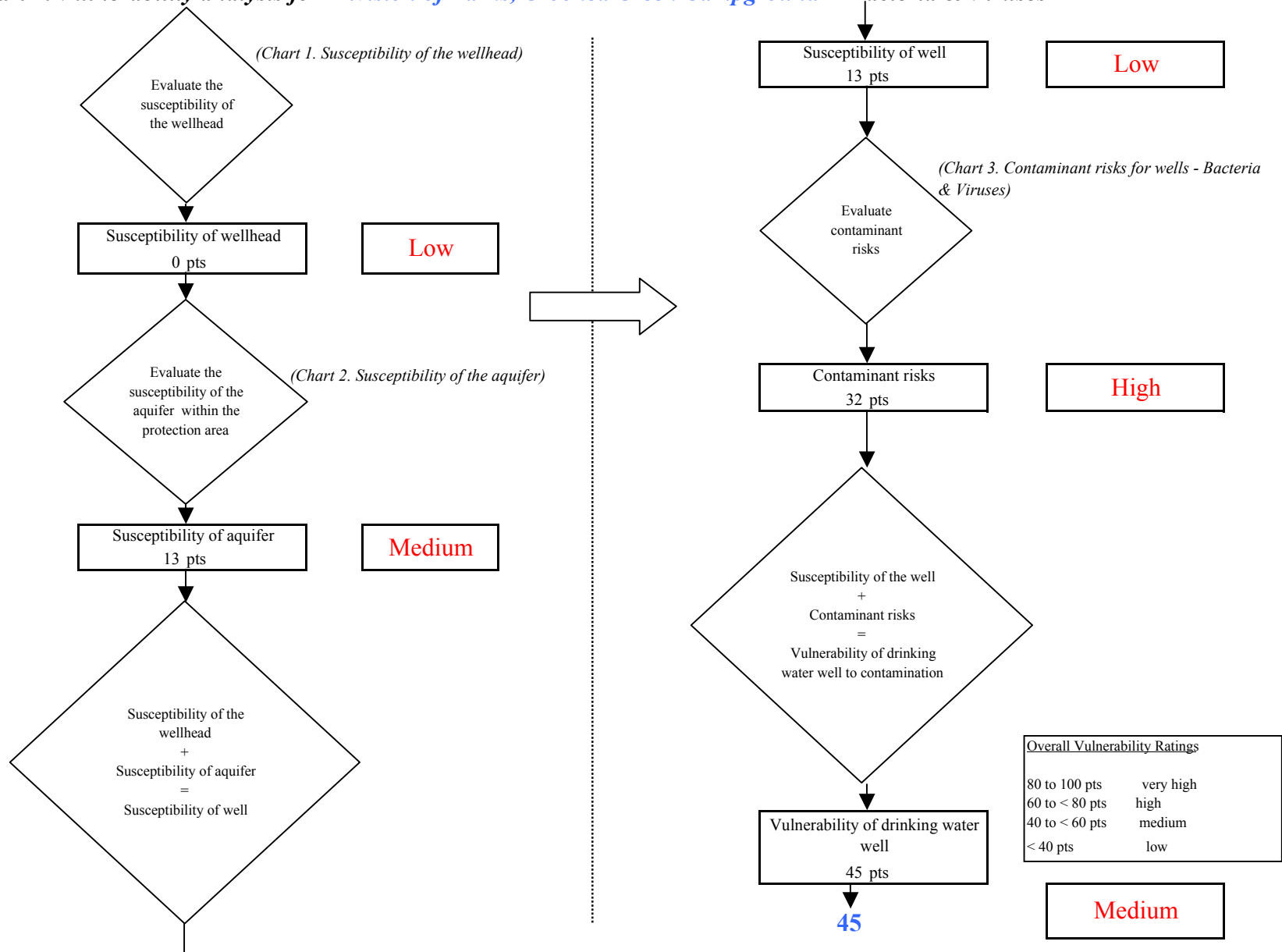


Chart 5. Contaminant risks for Division of Parks, Crooked Creek Campground - Nitrates and Nitrites

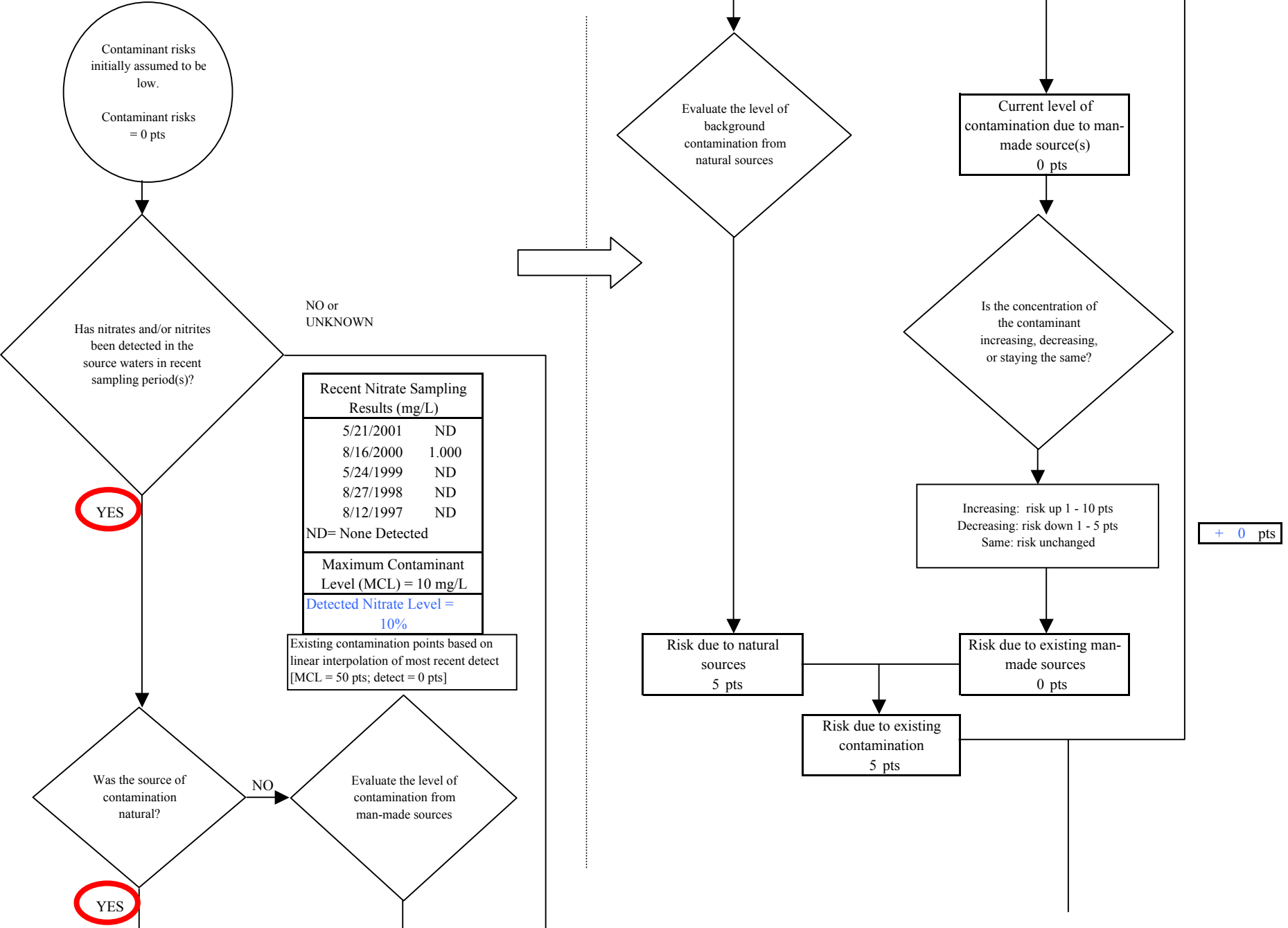
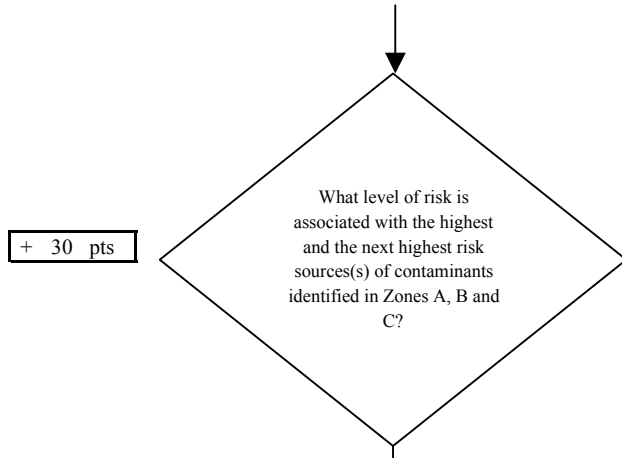


Chart 5. Contaminant risks for Division of Parks, Crooked Creek Campground - Nitrates and Nitrites



+ 30 pts

| Risk Levels for Contaminant Sources identified in Zones A, B and C | | | |
|--|--------|-----------|-------|
| | Zone A | Zones B&C | Total |
| Very High(s) | 0 | 0 | 0 |
| High(s) | 0 | 1 | 1 |
| Medium(s) | 0 | 0 | 0 |
| Low(s) | 5 | 4 | 9 |

| | LOW 10 pts | MEDIUM 20 pts | HIGH 30 pts | VERY HIGH 40 pts |
|-----------|--------------------------|-------------------------|-------------------------|-------------------------|
| LOW | ≥ 10 sources + 10 pts | ≥ 10 sources + 5 pts | ≥ 20 sources + 5 pts | ---- |
| MEDIUM | ---- | ≥ 2 sources + 5 pts | ≥ 5 sources + 5 pts | ≥ 10 sources + 5 pts |
| HIGH | ---- | ---- | ≥ 1 source + 10 pts | ≥ 2 sources + 10 pts |
| VERY HIGH | ---- | ---- | ---- | ≥ 1 source + 10 pts |

Matrix Score 30

Note: Septic systems, sewerlines, and roads are each assigned a risk ranking for each individual contaminant source in the CSI. The VA, however, counts these contaminant sources as a group and assigns a calculated number of either "lows" or "mediums" based on the density.

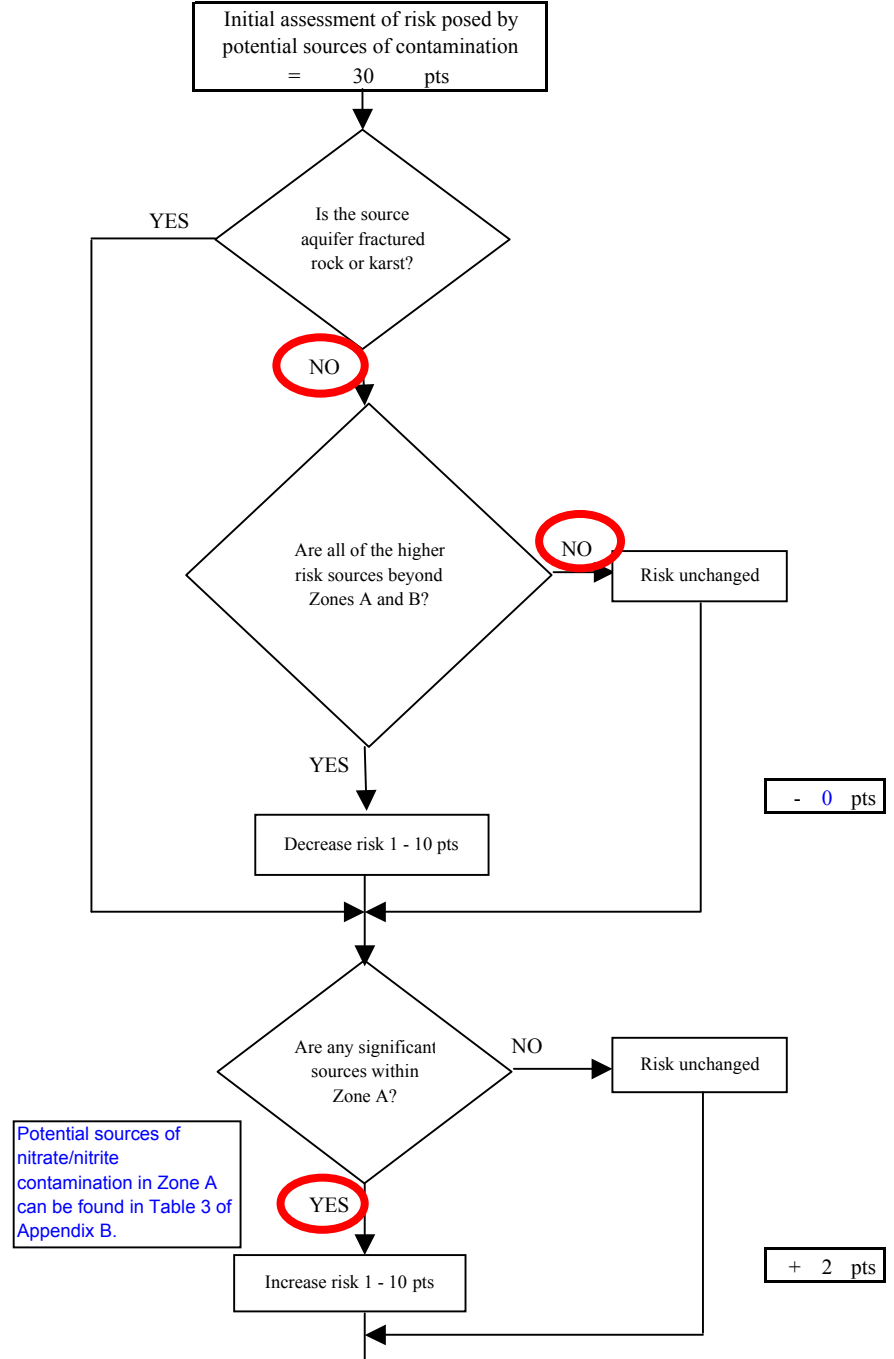
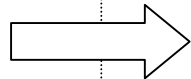


Chart 5. Contaminant risks for Division of Parks, Crooked Creek Campground - Nitrates and Nitrites

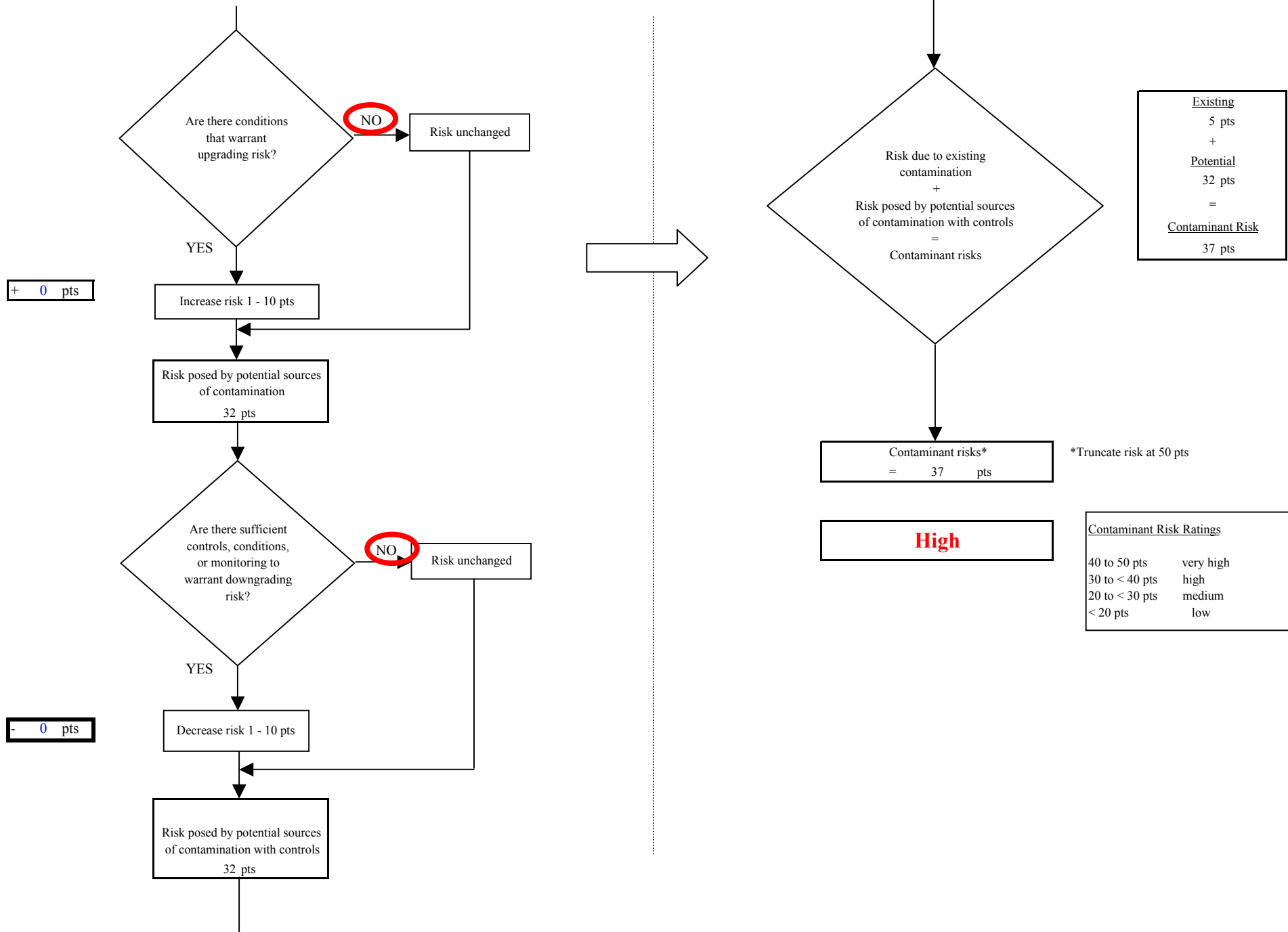


Chart 6. Vulnerability analysis for Division of Parks, Crooked Creek Campground - Nitrates and Nitrites

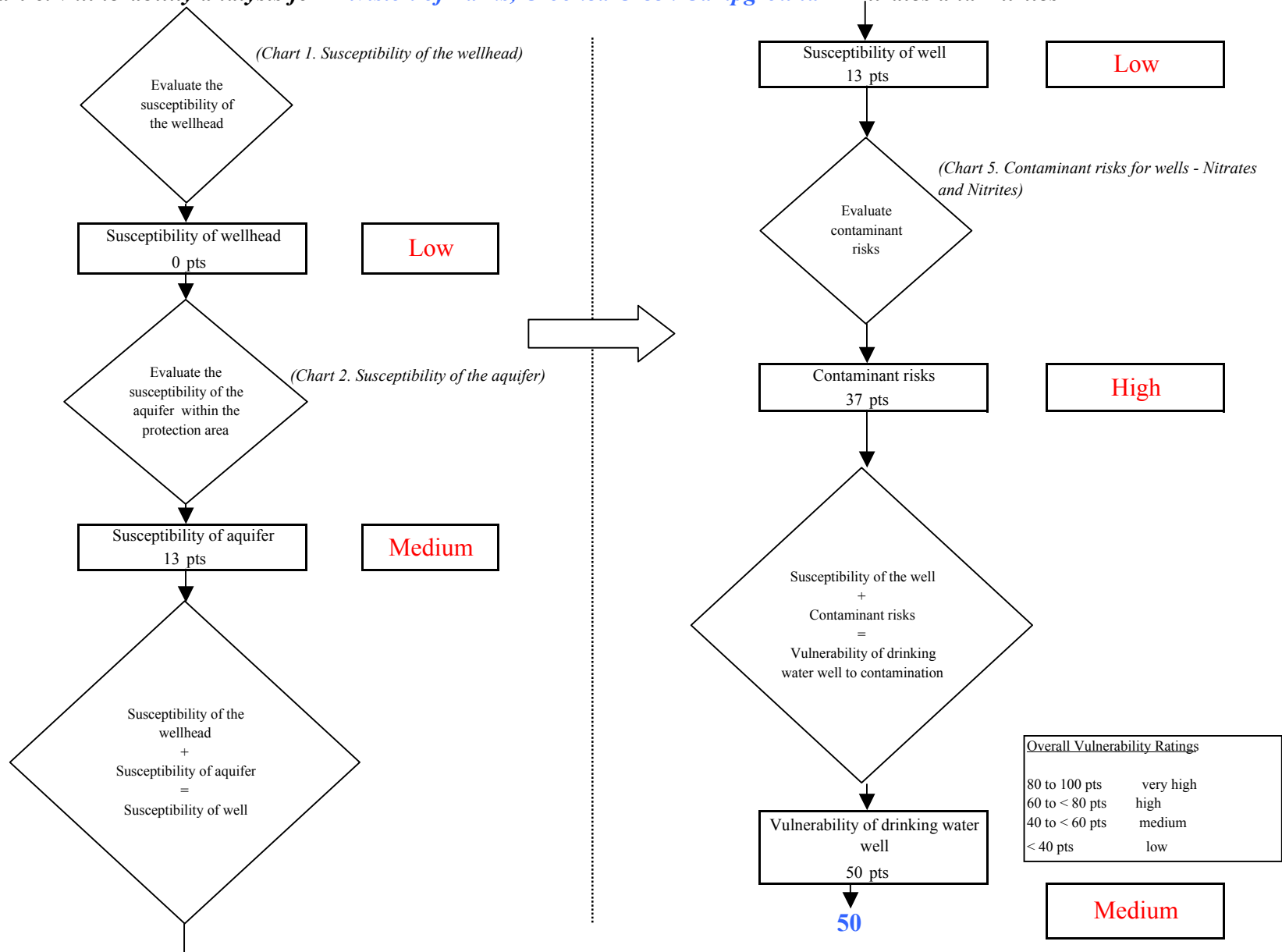


Chart 7. Contaminant risks for *Division of Parks, Crooked Creek Campground* - Volatile Organic Chemicals

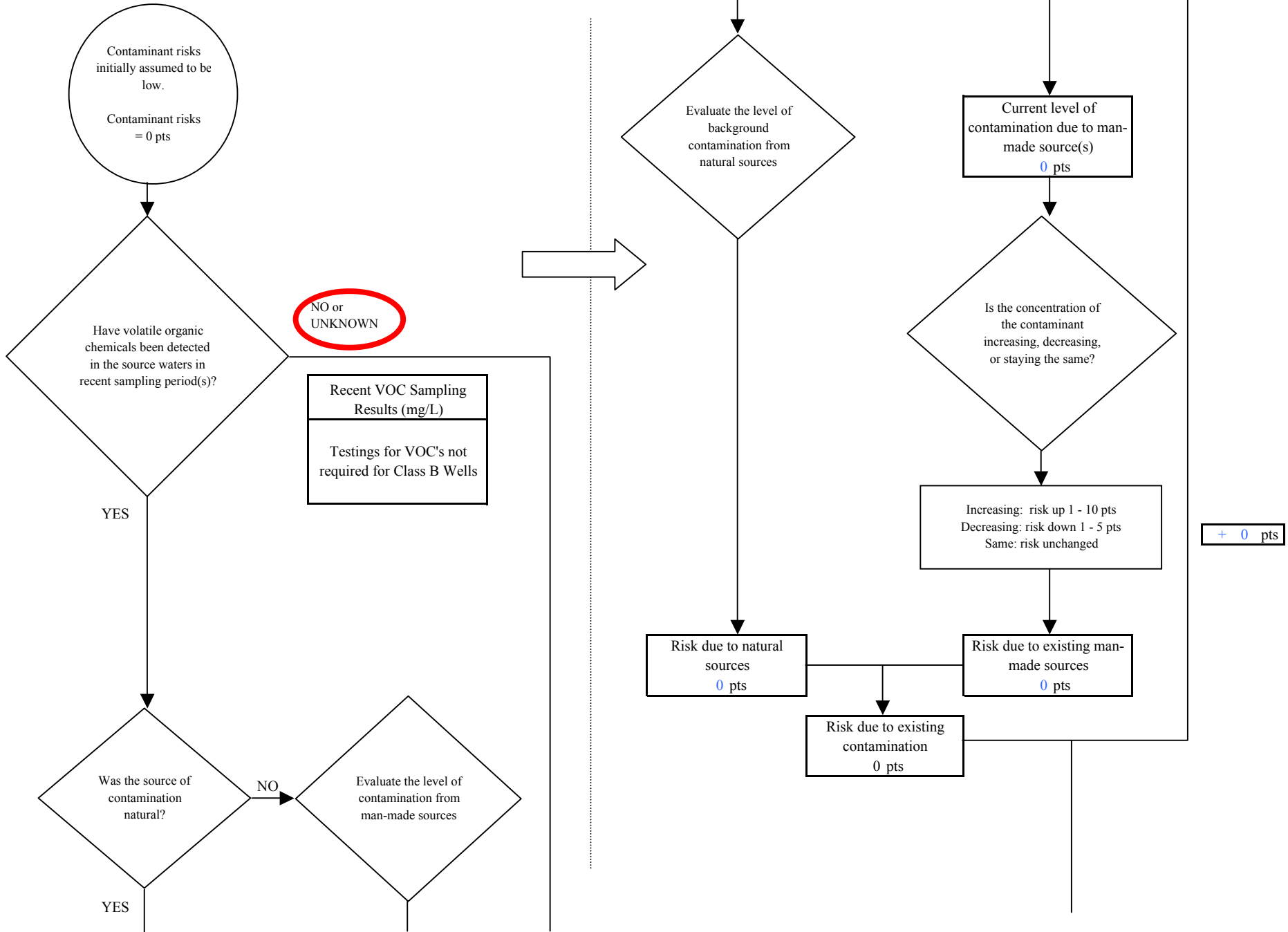
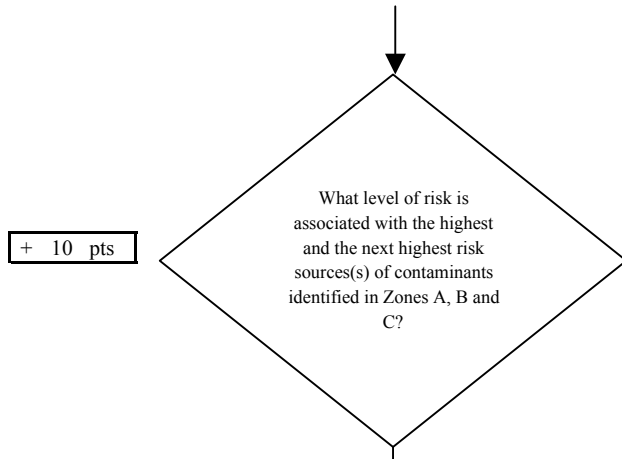


Chart 7. Contaminant risks for Division of Parks, Crooked Creek Campground - Volatile Organic Chemicals



+ 10 pts

| Risk Levels for Contaminant Sources identified in Zones A, B and C | | | |
|--|--------|-----------|-------|
| | Zone A | Zones B&C | Total |
| Very High(s) | 0 | 0 | 0 |
| High(s) | 0 | 0 | 0 |
| Medium(s) | 0 | 0 | 0 |
| Low(s) | 5 | 5 | 10 |

| | LOW 10 pts | MEDIUM 20 pts | HIGH 30 pts | VERY HIGH 40 pts |
|------------------|--------------------------|-------------------------|-------------------------|----------------------------|
| LOW | ≥ 10 sources + 10 pts | ≥ 10 sources + 5 pts | ≥ 20 sources + 5 pts | ---- |
| MEDIUM | ---- | ≥ 2 sources + 5 pts | ≥ 5 sources + 5 pts | ≥ 10 sources + 5 pts |
| HIGH | ---- | ---- | ≥ 1 source + 10 pts | ≥ 2 sources + 10 pts |
| VERY HIGH | ---- | ---- | ---- | ≥ 1 source + 10 pts |

Matrix Score 10

Note: Septic systems, sewerlines, and roads are each assigned a risk ranking for each individual contaminant source in the CSI. The VA, however, counts these contaminant sources as a group and assigns a calculated number of either "lows" or "mediums" based on the density.

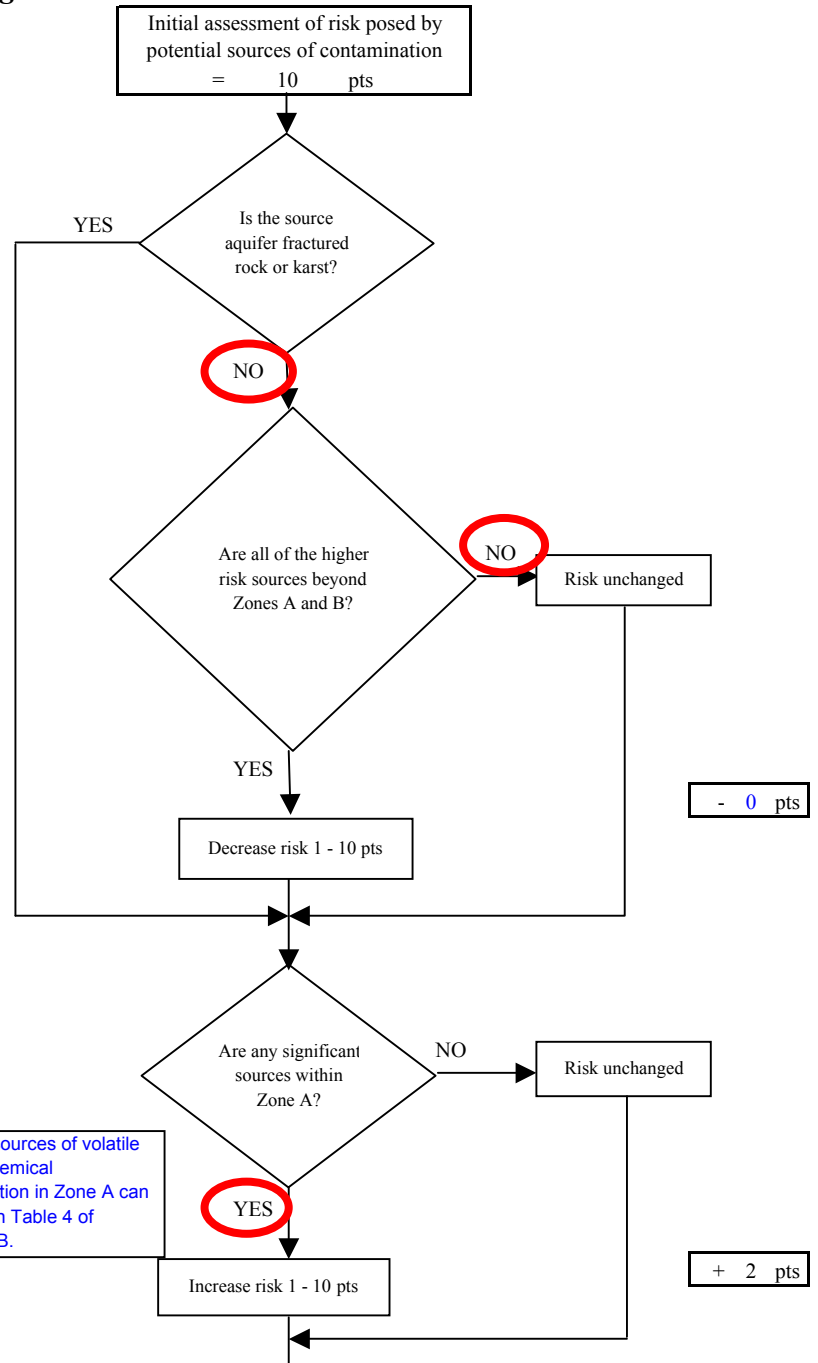


Chart 7. Contaminant risks for Division of Parks, Crooked Creek Campground - Volatile Organic Chemicals

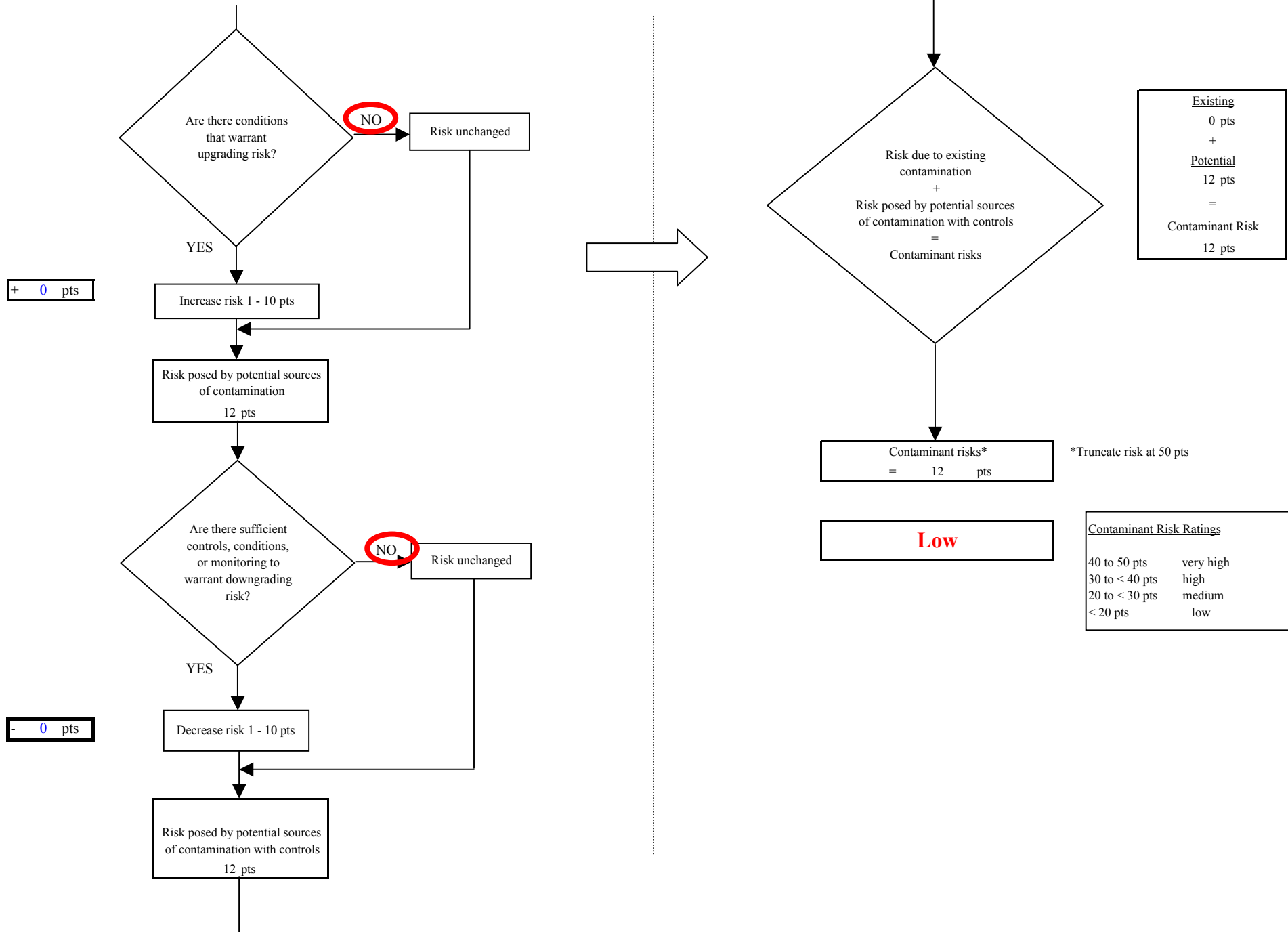


Chart 8. Vulnerability analysis for Division of Parks, Crooked Creek Campground - Volatile Organic Chemicals

