



## City/Borough of Juneau – Salmon Creek Reservoir

*PWS ID# 110342.001, IN001*

Table 1: Public Water System Source Information

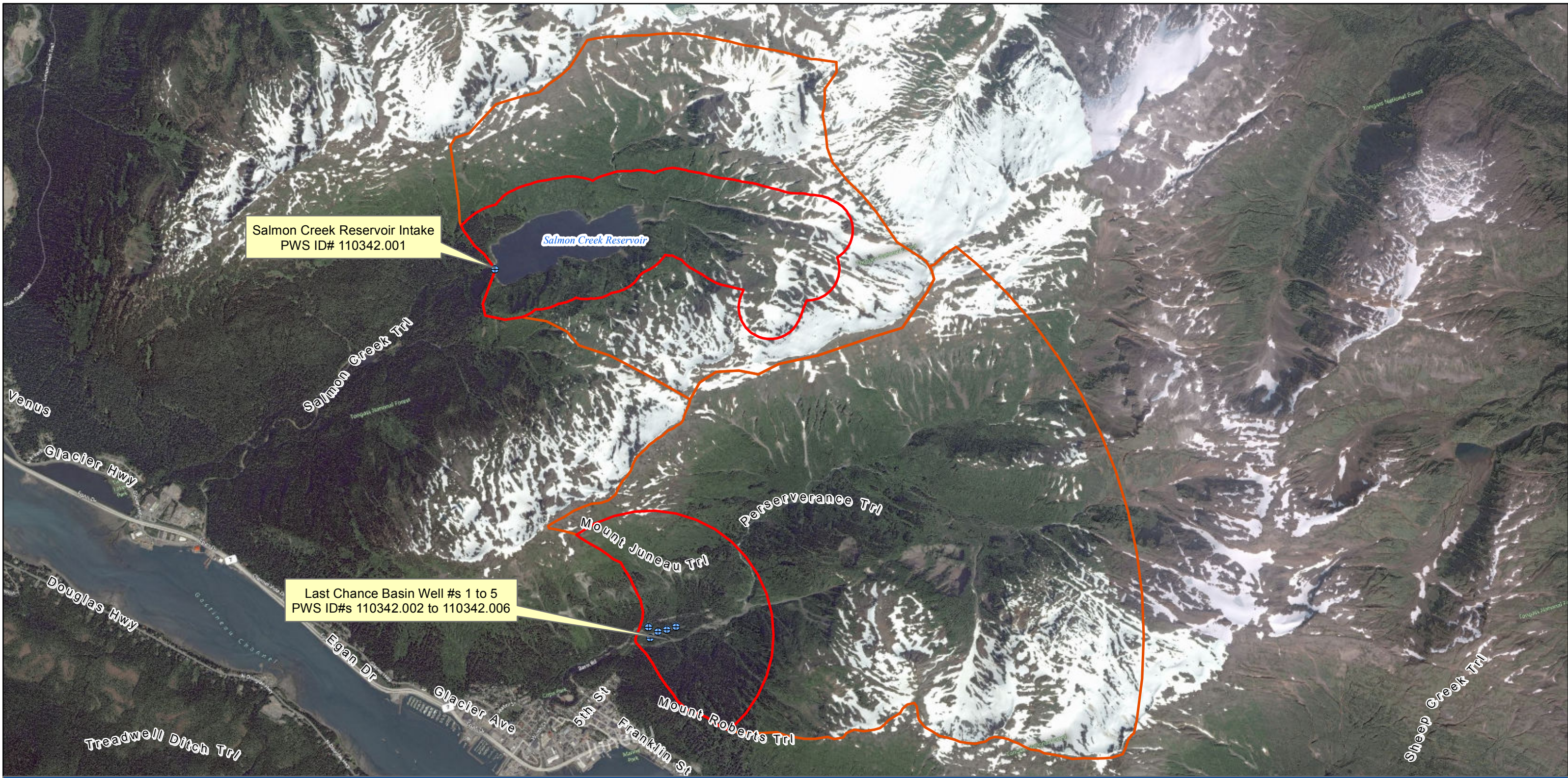
<b>PWS Name</b>	City/Borough of Juneau
<b>PWS ID Number</b>	110342.001
<b>State Asgn ID No.</b>	IN001
<b>Facility Name</b>	IN Salmon Creek Reservoir
<b>Source Type</b>	Surface Water
<b>Federal Classification</b>	Community

### Executive Summary

The public water system for the City/Borough of Juneau is a Community Water System (CWS) consisting of five wells located in the Last Chance Basin near Gold Creek and one intake on Salmon Creek Reservoir. The primary source is the Last Chance Basin Wellfield on Gold Creek and the secondary source is the Salmon Creek Reservoir. This Executive Summary is for the Salmon Creek Reservoir.

The Salmon Creek Reservoir protection area is approximately 4.5 square miles in size and received a susceptibility rating of **Very High**. *A rating of High to Very High is typical for all systems with surface water intakes.* Identified potential and existing sources of contamination for the Salmon Creek Reservoir include landslides, wildlife, an abandoned cabin and foot trails. These are considered potential sources of bacteria and viruses, nitrates and/or nitrites, volatile organic chemicals (VOCs), heavy metals, cyanide, and other inorganic chemicals, synthetic organic chemicals (SOCs), and other organic chemicals (OOCs).

Combining the natural susceptibility of the surface water source with the six (6) contaminant risk categories, the public water system for City/Borough of Juneau – Salmon Creek Reservoir received an overall vulnerability rating of **Medium** for bacteria and viruses, nitrites and/or nitrates, VOCs, heavy metals, cyanide, and other inorganic chemicals, and SOCs and OOCs.



**Map 1 - City and Borough of Juneau Public Water System**

**PWS ID# 110342.001 to 110342.006**



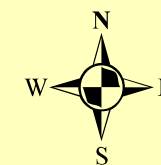
**Public Drinking Water Systems**

⊕ City/Borough of Juneau Intake and Wells

**Drinking Water Protection Areas**

□ Zone A Protection Area

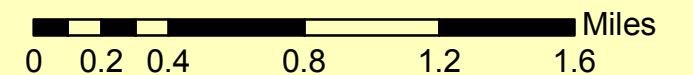
□ Zone B Protection Area



1:36,000

**DATA SOURCES:**

*Aerial Imagery:* Virtual Earth, Microsoft Live Search Maps  
*Public Drinking Water Sources and Drinking Water Protection Areas:* Alaska Department of Environmental Conservation



**Table 2**

*Contaminant Source Inventory and Risk Ranking for  
City of Juneau-Salmon Creek Reservoir  
Sources of Bacteria and Viruses*

**PWSID 110342.001**

<i>Contaminant Source Type</i>	<i>Contaminant Source ID</i>	<i>CS ID tag</i>	<i>Zone</i>	<i>Risk Ranking for Analysis</i>	<i>Map Number</i>	<i>Comments</i>
Cabin - abandoned?	X35	X35-1	A	Low	2	Marked on USGS 1:63,000 quadrangle. Unknown if this is still present or active.
Dog walking areas/foot trails	X46	X46-1	A	Low	2	From 2001 sanitary survey information.

**Table 3**

*Contaminant Source Inventory and Risk Ranking for  
City of Juneau-Salmon Creek Reservoir  
Sources of Nitrates/Nitrites*

**PWSID 110342.001**

<i>Contaminant Source Type</i>	<i>Contaminant Source ID</i>	<i>CS ID tag</i>	<i>Zone</i>	<i>Risk Ranking for Analysis</i>	<i>Map Number</i>	<i>Comments</i>
Cabin - abandoned?	X35	X35-1	A	Low	2	Marked on USGS 1:63,000 quadrangle. Unknown if this is still present or active.
Dog walking areas/foot trails	X46	X46-1	A	Low	2	From 2001 sanitary survey information.

**Table 4**

*Contaminant Source Inventory and Risk Ranking for  
City of Juneau-Salmon Creek Reservoir  
Sources of Volatile Organic Chemicals*

*PWSID 110342.001*

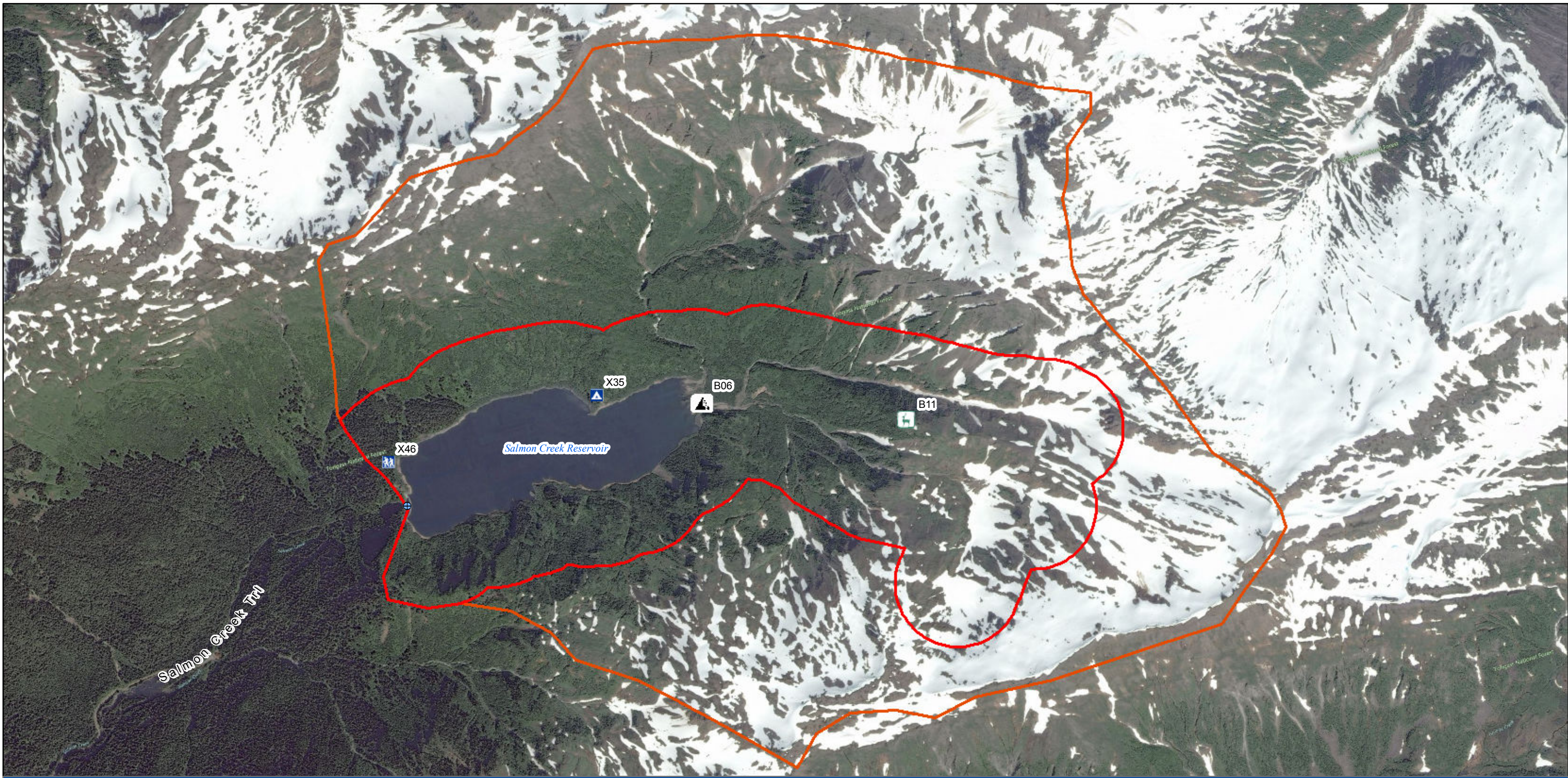
<i>Contaminant Source Type</i>	<i>Contaminant Source ID</i>	<i>CS ID tag</i>	<i>Zone</i>	<i>Risk Ranking for Analysis</i>	<i>Map Number</i>	<i>Comments</i>
Cabin - abandoned?	X35	X35-1	A	Low	2	Marked on USGS 1:63,000 quadrangle. Unknown if this is still present or active.

**Table 1**

**Contaminant Source Inventory for  
City of Juneau-Salmon Creek Reservoir**

**PWSID 110342.001**

<b>Contaminant Source Type</b>	<b>Contaminant Source ID</b>	<b>CS ID tag</b>	<b>Zone</b>	<b>Map Number</b>	<b>Comments</b>
Landslides or other hillside areas subject to significant erosion	B06	B06-1	A	2	From 2001 sanitary survey information.
Cabin - abandoned?	X35	X35-1	A	2	Marked on USGS 1:63,000 quadrangle. Unknown if this is still present or active.
Dog walking areas/foot trails	X46	X46-1	A	2	From 2001 sanitary survey information.



**Map 2 - City and Borough of Juneau - Salmon Creek Reservoir**

**PWS ID# 110342.001**



**Public Drinking Water Systems**

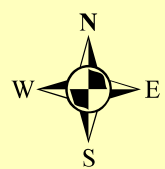
- ⊕ Salmon Creek Reservoir Intake

**Drinking Water Protection Areas**

- Zone A (1000-foot Buffer)
- Zone B (1-mile Buffer)

**Potential/Existing Sources of Contamination**

- B06, Landslides or other hillside areas subject to significant erosion
- B11, Wildlife habitat, densely populated (other than birds, salmon, beavers, etc.)
- X35, Campgrounds and RV Parks
- X46, Dog walking areas/foot trails



1:18,000

**DATA SOURCES:**

*Aerial Imagery: Virtual Earth, Microsoft Live Search Maps  
Public Drinking Water Sources, Drinking Water Protection Areas and Potential/Existing Sources of Contamination: Alaska Department of Environmental Conservation*

