



Source Water Assessment

A Hydrogeologic Susceptibility and
Vulnerability Assessment for
Dalton Cache Border Station,
Haines, Alaska
PWSID #111275

DRINKING WATER PROTECTION PROGRAM REPORT NO. 712

Alaska Department of Environmental Conservation

Source Water Assessment for Dalton Cache Border Station Haines, Alaska PWSID #111275

DRINKING WATER PROTECTION PROGRAM REPORT NO. 712

The Drinking Water Protection Program (DWPP) is producing Source Water Assessments in compliance with the Safe Drinking Water Act Amendments of 1996. Each assessment includes a delineation of the source water area, an inventory of potential and existing contaminant sources that may impact the water, a risk ranking for each of these contaminants, and an evaluation of the potential vulnerability of these drinking water sources.

These assessments are intended to provide public water systems owners/operators, communities, and local governments with the best available information that may be used to protect the quality of their drinking water. The assessments combine information obtained from various sources, including the U.S. Environmental Protection Agency, Alaska Department of Environmental Conservation (ADEC), public water system owners/operators, and other public information sources. The results of this assessment are subject to change if additional data becomes available. It is anticipated this assessment will be updated every five years to reflect any changes in the vulnerability and/or susceptibility of public drinking water source. If you have any additional information that may affect the results of this assessment, please contact the Program Coordinator of DWPP, (907) 269-7521.

CONTENTS

SECTION		Page
	Executive Summary	1
	Dalton Cache Border Station Public Drinking Water System	1
	Dalton Cache Border Station Drinking Water Protection Area	1
	Inventory of Potential and Existing Contaminant Sources	2
	Ranking of Contaminant Risks	2
	Vulnerability of Dalton Cache Border Station Drinking Water System	2
	References	5

TABLES

TABLE		
	1. Definition of Zones	2
	2. Susceptibility	3
	3. Contaminant Risks	3
	4. Overall Vulnerability	3

APPENDICES

APPENDIX		
	A. Dalton Cache Border Station Drinking Water Protection Area (Map 1)	
	B. Contaminant Source Inventory for Dalton Cache Border Station (Table 1)	
	Contaminant Source Inventory and Risk Ranking for Dalton Cache Border Station - Bacteria and Viruses (Table 2)	
	Contaminant Source Inventory and Risk Ranking for Dalton Cache Border Station – Nitrates/Nitrites (Table 3)	
	Contaminant Source Inventory and Risk Ranking for Dalton Cache Border Station – Volatile Organic Chemicals (Table 4)	
	C. Dalton Cache Border Station Drinking Water Protection Area and Potential and Existing Contaminant Sources (Map 2)	
	D. Vulnerability Analysis for Contaminant Source Inventory and Risk Ranking for Dalton Cache Border Station Public Drinking Water Source (Charts 1 – 8)	

Source Water Assessment for Dalton Cache Border Station, Haines, Alaska

Drinking Water Protection Program Alaska Department of Environmental Conservation

EXECUTIVE SUMMARY

The public water system for Dalton Cache Border Station is a Class B (transient/non-community) water system consisting of one well. The U.S. Customs Dalton Cache Border Station is located at Mile 40.7 Haines Highway, northwest of Haines, Alaska. The wellhead received a susceptibility rating of **Low** and the aquifer received a susceptibility rating of **Very High**. Combining these two ratings produces a **Medium** rating for the natural susceptibility of the well. Identified potential and current sources of contaminants for Dalton Cache Border Station public drinking water source include: septic systems; above-ground heating oil tanks; closed leaking underground fuel storage tank sites; water supply wells; and roads. These identified potential and existing sources of contamination are considered sources of bacteria and viruses, nitrates and/or nitrites, and volatile organic chemicals. Overall, the public water sources for Dalton Cache Border Station received a vulnerability rating of **High** for both bacteria and viruses and nitrates and nitrites, and **Medium** for volatile organic chemicals.

DALTON CACHE BORDER STATION PUBLIC DRINKING WATER SYSTEM

Dalton Cache Border Station public water system is a Class B (transient/non-community) water system. The system consists of one 6-inch diameter well located at Mile 40.7 Haines Highway, northwest of Haines, Haines, Alaska, near the border with Canada (See Map 1 of Appendix A).

Based on the weather data for Haines, the area is assumed to average about 60 inches of precipitation per year; and approximately 133 inches of snow. The groundwater aquifers underlying the area are recharged through the infiltration of precipitation and surface water. Groundwater aquifers in the region generally occur in the fractured bedrock and unconsolidated sediments deposited by glaciers and/or rivers. The elevation of the Dalton Cache Border Station is at an elevation of approximately 300 feet.

According to a Sanitary Survey from June 28, 1998, the existing well was installed in 1978. The depth of the well is 241 feet below the ground surface and is completed in the fractured bedrock. The length of the well screen is 15 feet.

The Sanitary Survey (6/28/98) for the water system indicates the land surface is appropriately sloped away from the well, providing adequate surface water drainage, but may not be grouted according to ADEC regulations. Proper grouting provides added protection against contaminants traveling along the well casing and into source waters.

This system operates year round and serves approximately 12 residents and 100 non-residents through 1 service connection.

DALTON CACHE BORDER STATION DRINKING WATER PROTECTION AREA

In order to evaluate whether a drinking water source is at risk, we must first evaluate what are the most likely pathways for surface contamination to reach the groundwater. These areas are determined by looking at the characteristics of the soil, groundwater, aquifer, and well.

The most probable area for contamination to reach the drinking water well is the area that contributes water to the well, the groundwater recharge area. This area is designated as the Drinking Water Protection Area (DWPA). Because releases of contaminants within the DWPA are most likely to impact the drinking water well, this area will serve as the focus for voluntary protection efforts.

An analytical calculation was used to determine the size and shape of the DWPA. The input parameters describing the attribute of the aquifer in this calculation were adopted from the U.S. Geological Survey (Patrick, Brabets, and Glass, 1989), and State of Alaska Department of Water Resources (*Jokela, et. al., 1991*). Additional methods were also used to take into account any uncertainties in groundwater flow and aquifer characteristics to arrive at a meaningful DPWA (Please refer to the Guidance Manual for Class B Public Water Systems for additional information).

The DWPA's established for wells by the ADEC are usually separated into four zones. These zones correspond to differences in the time-of-travel (TOT) of the water moving through the aquifer to the well.

The TOT for contaminants within the water varies and is dependent on the physical and chemical characteristics of each contaminant. The following is a summary of the four protection area zones for wells and the calculated time-of-travel for each:

Table 1. Definition of Zones

Zone	Definition
A	¼ the distance for the 2-yr. time-of-travel
B	Less than the 2 year time-of-travel
C	Less Than the 5 year time-of-travel
D	Less than the 10 year time-of-travel

The DWPA for Dalton Cache Border Station is estimated to extend approximately 1.5 miles to the northeast. Development in the vicinity of the well is limited to Zone A (See Map 1 of Appendix A).

INVENTORY OF POTENTIAL AND EXISTING CONTAMINANT SOURCES

The Drinking Water Protection Program has completed an inventory of potential and existing sources of contamination within the Dalton Cache Border Station DWPA. This inventory was completed through a search of agency records and other publicly-available information. Potential sources of contamination to the drinking water aquifer include a wide range of categories and types. Potential drinking water contaminants are found within agricultural, residential, commercial, and industrial areas, but can also occur within areas that have little or no development.

For the basis of all Class B public water system assessments, three categories of drinking water contaminants were inventoried. They include:

- Bacteria and viruses;
- Nitrates and/or nitrites;
- Volatile organic chemicals

The sources are displayed on Map 2 of Appendix C and summarized in Table 1 of Appendix B.

RANKING OF CONTAMINANT RISKS

Once the potential and existing sources of contamination have been identified, they are assigned a ranking according to what type and level of risk they represent. Ranking of contaminant risks for a

“potential” or “existing” source of contamination is a function of toxicity and volumes of specific contaminants associated with that source. Rankings include:

- Low;
- Medium;
- High; and
- Very High.

The TOT for contaminants within the water varies and is dependent on the physical and chemical characteristics of each contaminant. Bacteria and Viruses are only inventoried in Zones A and B because of their short life span. Only “Very High” and “High” rankings are inventoried within the outer Zone D due to the probability of contaminant dilution by the time the contaminants get to the well.

Tables 2 through 4 in Appendix B contain the ranking of potential and existing sources of contamination with respect to bacteria and viruses, nitrates and/or nitrites, and volatile organic chemicals.

VULNERABILITY OF DALTON CACHE BORDER STATION DRINKING WATER SYSTEM

Vulnerability of a drinking water source to contamination is a combination of two factors:

- Natural susceptibility; and
- Contaminant risks.

Appendix D contains eight charts, which together form the ‘Vulnerability Analysis’ for a source water assessment for a public drinking water source. Chart 1 analyzes the ‘Susceptibility of the Wellhead’ to contamination by looking at the construction of the well and its surrounding area. Chart 2 analyzes the ‘Susceptibility of the Aquifer’ to contamination by looking at the naturally occurring attributes of the water source and influences on the groundwater system that might lead to contamination. Chart 3 analyzes ‘Contaminant Risks’ for the drinking water source with respect to bacteria and viruses. The ‘Contaminant Risks’ portion of the analysis considers potential sources of contaminants as well as a review of contamination that has or may have occurred, but has not arrived or been detected at the well. Lastly, Chart 4 contains the ‘Vulnerability Analysis for Bacteria and Viruses’. Charts 5 through 8 contain the Contaminant Risks and Vulnerability Analyses for nitrates and nitrites and volatile organic chemicals, respectively.

A score for the Natural Susceptibility is reached by considering the properties of the well and the aquifer.

Susceptibility of the Wellhead (0 – 25 Points)
(Chart 1 of Appendix D)

+

Susceptibility of the Aquifer (0 – 25 Points)
(Chart 2 of Appendix D)

=

Natural Susceptibility (Susceptibility of the Well)
(0 – 50 Points)

A ranking is assigned for the Natural Susceptibility according to the point score:

Natural Susceptibility Ratings

40 to 50 pts Very High
30 to < 40 pts High
20 to < 30 pts Medium
< 20 pts Low

The well for the Dalton Cache Border Station is completed in an unconfined aquifer. Because unconfined aquifers are recharged by surface water and precipitation that migrates downward from the surface, contaminants at the surface have the potential to adversely impact this aquifer. Table 2 shows the Susceptibility scores and ratings for Dalton Cache Border Station

Table 2. Susceptibility

	Score	Rating
Susceptibility of the Wellhead	5	Low
Susceptibility of the Aquifer	22	Very High
Natural Susceptibility	27	Medium

Contaminant risks to a drinking water source depend on the type, number or density, and distribution of contaminant sources. This score has been derived from an examination of existing and historical contamination that has been detected at the drinking water source through routine sampling. It also evaluates potential sources of contamination. Flow charts are used to assign a point score, and ratings are assigned in the same way as for the natural susceptibility:

Contaminant Risk Ratings

40 to 50 pts Very High
30 to < 40 pts High
20 to < 30 pts Medium
< 20 pts Low

Table 3 summarizes the Contaminant Risks for each category of drinking water contaminants.

Table 3. Contaminant Risks

Category	Score	Rating
Bacteria and Viruses	40	Very High
Nitrates and/or Nitrites	44	Very High
Volatile Organic Chemicals	25	Medium

Finally, an overall vulnerability score is assigned for each water system by combining each of the contaminant risk scores with the natural susceptibility score:

Natural Susceptibility (0 – 50 points)

+

Contaminant Risks (0 – 50 points)

=

Vulnerability of the
Drinking Water Source to Contamination (0 – 100).

Again, rankings are assigned according to a point score:

Overall Vulnerability Ratings

80 to 100 pts Very High
60 to < 80 pts High
40 to < 60 pts Medium
< 40 pts Low

Table 4 contains the overall vulnerability scores (0 - 100) and ratings for each of the three categories of drinking water contaminants. Note: scores are rounded off to the nearest five.

Table 4. Overall Vulnerability

Category	Score	Rating
Bacteria and Viruses	65	High
Nitrates and Nitrites	70	High
Volatile Organic Chemicals	55	Medium

Bacteria and Viruses

The contaminant risk for bacteria and viruses is **Very High** with septic systems and roads located within Zone A representing the risks to the drinking water well (See Chart 3 – Contaminant Risks for Bacteria and Viruses in Appendix D).

Only a small amount of bacteria and viruses are required to endanger public health. Bacteria and viruses have not been detected during recent water sampling of the system at the Dalton Cache Border Station. Combining the contaminant risks with the overall natural susceptibility of the well, the vulnerability of the well to contamination by bacteria and viruses is **High**.

Nitrates and Nitrites

The contaminant risk for nitrates and nitrites is **Very High** with the septic systems and roads representing the risks to this source of public drinking water (See Chart 5 - Contaminant Risks for Nitrates and/or Nitrites in Appendix D).

Sampling history for Dalton Cache Border Station well indicates that nitrates have been detected in the water, but only in very low concentrations (most recently at 0.769 mg/L on 5/6/2002), or 8% of the Maximum Contaminant Level (MCL). The MCL is the maximum level of contaminant that is allowed to exist in drinking water and still be consumed by humans without harmful health effects. Due to the high solubility and weak retention by soil, nitrates are very mobile, moving at approximately the same rate as water.

After combining the contaminant risk for nitrates and nitrites with the natural susceptibility of the well, the overall vulnerability of the well to contamination by nitrates and nitrites is **High**.

Volatile Organic Chemicals

The contaminant risk for volatile organic chemicals is **Medium** with septic systems; above-ground heating oil tanks; underground closed diesel tanks; and roads creating the only known risks for volatile organic chemicals (See Chart 7 – Contaminant Risks for Volatile Organic Chemicals in Appendix D).

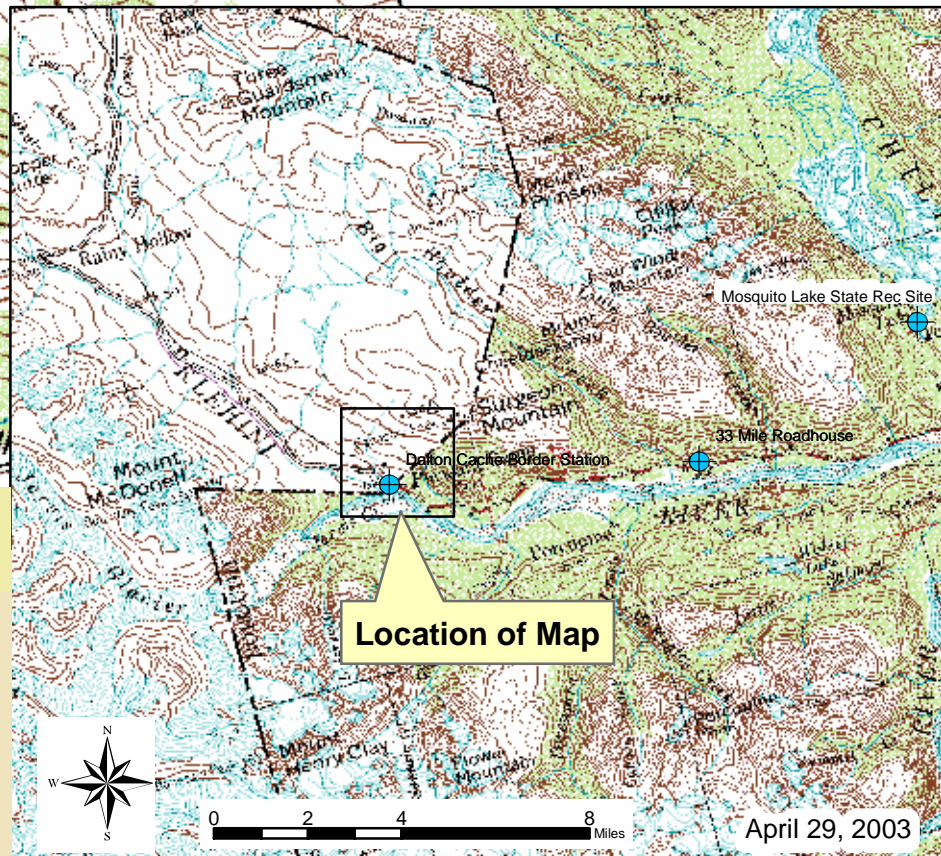
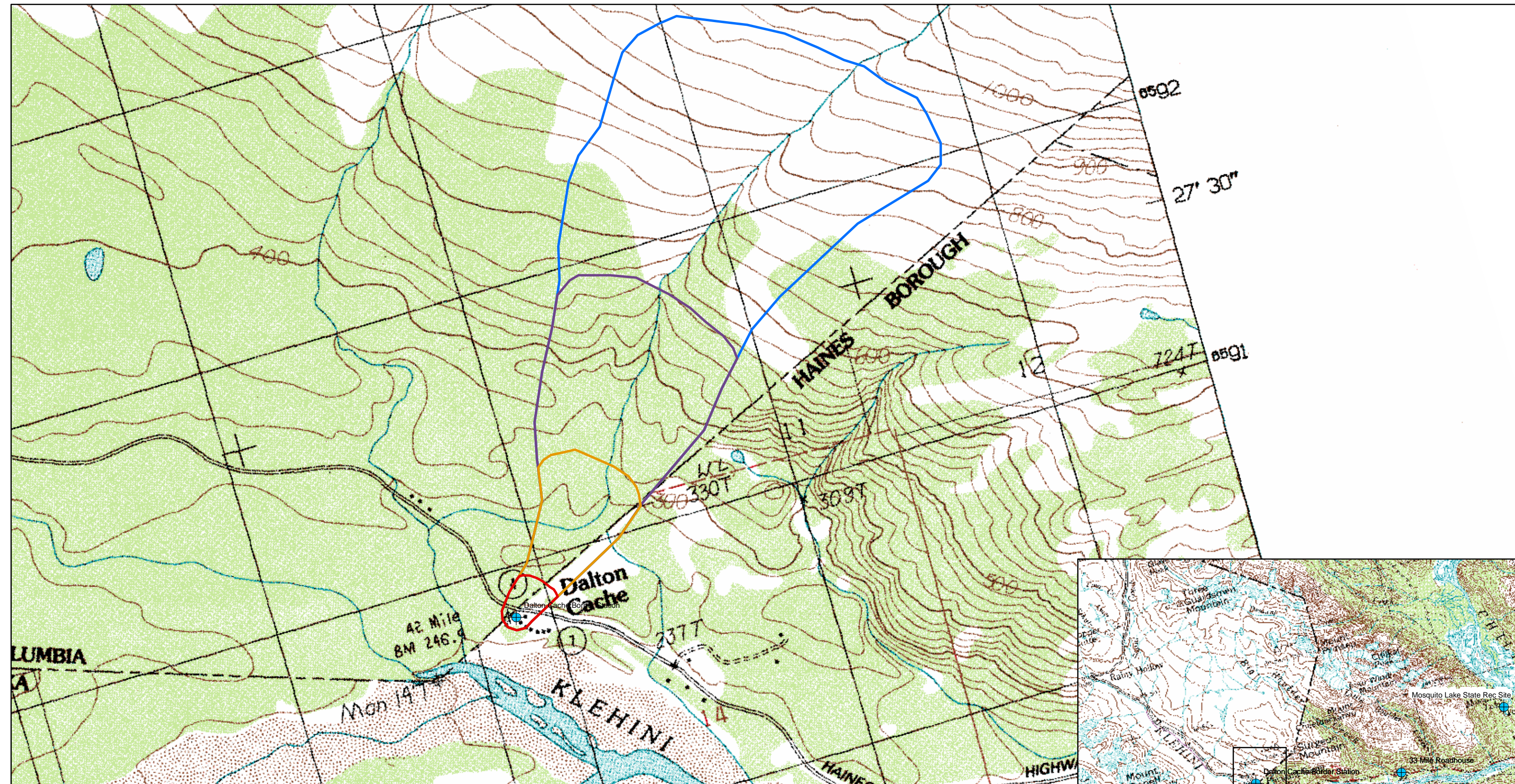
There are no sampling results for volatile organic chemicals at this well. Combining the contaminant risk for volatile organic chemicals with the natural susceptibility of the well, the overall vulnerability of the well to contamination by volatile organic chemicals is **Medium**.

REFERENCES

- Alaska Department of Community and Economic Development (ADCED), 2002 [WWW document]. URL http://www.dced.state.ak.us/mra/CF_BLOCK.cfm.
- Alaska Geospatial Data Clearinghouse, 2003. URL: <http://agdc.usgs.gov/data/datasets.html>.
- Gehrels, G.E., Berg, H.C., Geologic Map of Southeastern Alaska: U.S. Geological Survey Map (scale 1:600,000), Map I-1867, 1sheet.
- Jokela, J.B., Munter, J.A., and Evans, J.G., 1991, Ground-water resources of the Palmer-Big Lake area, Alaska: a conceptual model. Division of Geological & Geophysical Surveys Reports of Investigations 90-4, State of Alaska Department of Natural Resources, Fairbanks, AK.
- King, P.B., compiler, 1969, Tectonic map of North America: US Geological Survey Map, (scale 1:5,000,000) 2 sheets.
- Patrick, L.D., Brabets, T.P., and Glass, R.L., 1989, Simulation of ground-water flow at Anchorage, Alaska: US Geological Survey Water-Resources Investigations Report 88-4139, 41p.
- United States Environmental Protection Agency (EPA), 2002 [WWW document]. URL: <http://www.epa.gov/safewater/mcl.html>.

APPENDIX A

Dalton Cache Border Station Drinking Water Protection Area Location Map (Map 1)



Map 1: Dalton Cache Border Station Drinking Water Protection Areas

PWSID: 111275.001



1:13,086

Data Sources:
Background image - USGS 1:63,000 mapping

Protection zones were delineated based upon streams noted on USGS 1:63,000 mapping.

- Legend**
- Public Drinking Water Systems
 - Zone A Protection Area**
 Less than 2-Years Travel Time
 - Zone B Protection Area**
 Less than 5-Years Travel Time
 - Zone C Protection Area**
 Less than 10-Years Travel Time
 - Zone D Protection Area**
 Less than 10-Years Travel Time

April 29, 2003

APPENDIX B

Contaminant Source Inventory and Risk Ranking for Dalton Cache Border Station (Tables 1-4)

Table 1

**Contaminant Source Inventory for
Dalton Cache Border Station**

PWSID 111275.001

Contaminant Source Type	Contaminant Source ID	CS ID tag	Zone	Map Number	Comments
Injection wells (Class V) Large-Capacity Septic System (Drainfield Disposal Method)	D10	D10-1	A	2	Dalton Cache Border Station
Septic systems (serves one single-family home)	R02	R02-1	A	2	Residence
Tanks, heating oil, residential (above ground)	R08	R08-1	A	2	Dalton Cache Border Station
Closed tanks, diesel (underground)	T09	T09-1	A	2	Beside Drinking Water Well
Closed Leaking Underground Fuel Storage Tank (LUST) Sites	U08	U08-1	A	2	Beside Drinking Water Well
Water supply wells	W09	W09-1	A	2	Dalton Cache Border Station
Highways and roads, dirt/gravel	X24	X24-1	A	2	Haines Highway

Contaminant Source Inventory and Risk Ranking for

PWSID 111275.001

Table 2

*Dalton Cache Border Station
Sources of Bacteria and Viruses*

<i>Contaminant Source Type</i>	<i>Contaminant Source ID</i>	<i>CS ID tag</i>	<i>Zone</i>	<i>Risk Ranking for Analysis</i>	<i>Map Number</i>	<i>Comments</i>
Injection wells (Class V) Large-Capacity Septic System (Drainfield Disposal Method)	D10	D10-1	A	High	2	Dalton Cache Border Station
Septic systems (serves one single-family home)	R02	R02-1	A	Low	2	Residence
Highways and roads, dirt/gravel	X24	X24-1	A	Low	2	Haines Highway

Contaminant Source Inventory and Risk Ranking for

PWSID 111275.001

Dalton Cache Border Station

Sources of Nitrates/Nitrites

Table 3

<i>Contaminant Source Type</i>	<i>Contaminant Source ID</i>	<i>CS ID tag</i>	<i>Zone</i>	<i>Risk Ranking for Analysis</i>	<i>Map Number</i>	<i>Comments</i>
Injection wells (Class V) Large-Capacity Septic System (Drainfield Disposal Method)	D10	D10-1	A	High	2	Dalton Cache Border Station
Septic systems (serves one single-family home)	R02	R02-1	A	Low	2	Residence
Highways and roads, dirt/gravel	X24	X24-1	A	Low	2	Haines Highway

Contaminant Source Inventory and Risk Ranking for

PWSID 111275.001

Dalton Cache Border Station

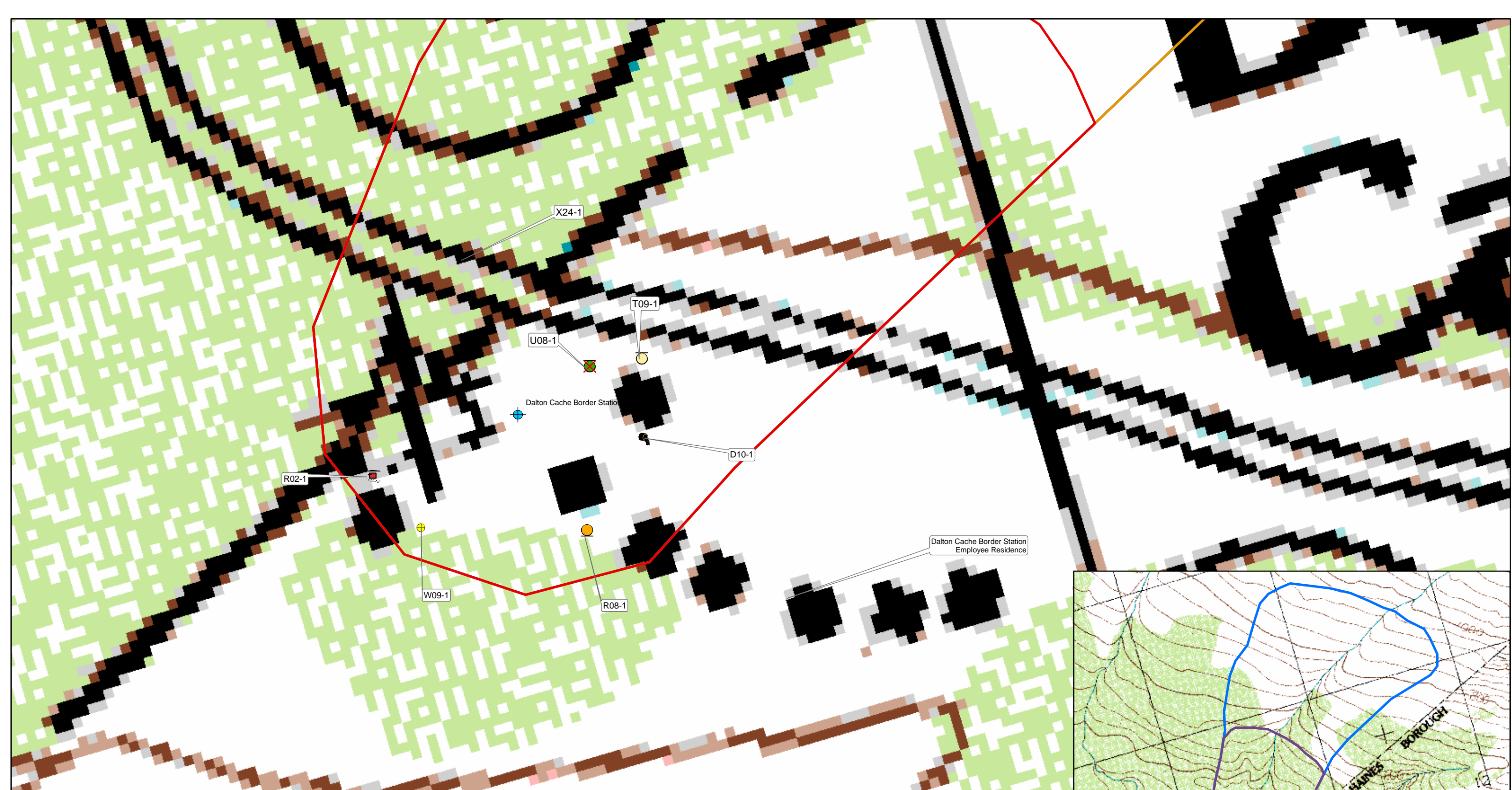
Sources of Volatile Organic Chemicals

Table 4

<i>Contaminant Source Type</i>	<i>Contaminant Source ID</i>	<i>CS ID tag</i>	<i>Zone</i>	<i>Risk Ranking for Analysis</i>	<i>Map Number</i>	<i>Comments</i>
Injection wells (Class V) Large-Capacity Septic System (Drainfield Disposal Method)	D10	D10-1	A	Low	2	Dalton Cache Border Station
Septic systems (serves one single-family home)	R02	R02-1	A	Low	2	Residence
Tanks, heating oil, residential (above ground)	R08	R08-1	A	Medium	2	Dalton Cache Border Station
Closed tanks, diesel (underground)	T09	T09-1	A	Medium	2	Beside Drinking Water Well
Highways and roads, dirt/gravel	X24	X24-1	A	Low	2	Haines Highway

APPENDIX C

Dalton Cache Border Station Drinking Water Protection Area and Potential and Existing Contaminant Sources (Map 2)



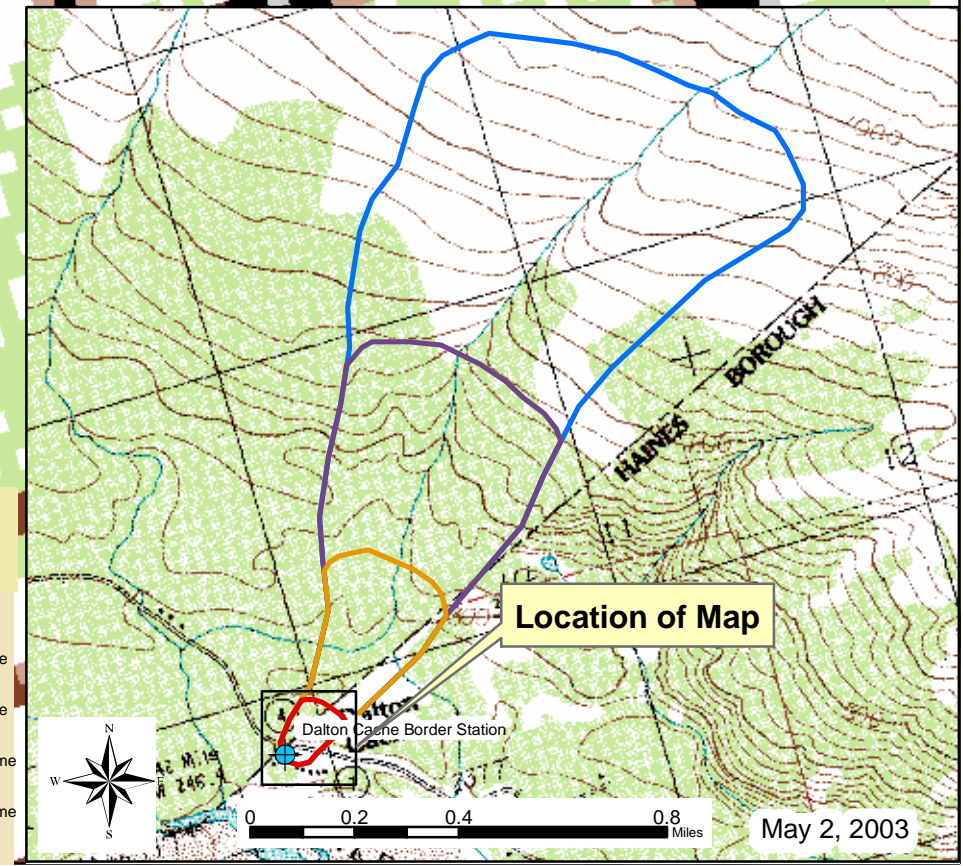
Map 2: Drinking Water Protection Areas for Dalton Cache Border Station and Potential and Existing Sources of Contamination

PWSID: 111275.001



Data Sources:
 Background image - USGS 1:63,000 mapping
 Protection zones were delineated based upon streams noted on USGS 1:63,000 mapping.

- Legend**
- Public Drinking Water Systems
 - Heating Oil Tanks, Residential (R08)
 - Single Family Septic System (R02)
 - Private Water Supply Well (W09)
 - Large Capacity Septic System (D10)
 - Closed Leaking Underground Fuel Storage Tank (U08)
 - Closed Underground Diesel Tank (T09)
- Zone A Protection Area**
Less than 2-Years Travel Time
 - Zone B Protection Area**
Less than 5-Years Travel Time
 - Zone C Protection Area**
Less than 10-Years Travel Time
 - Zone D Protection Area**
Less than 10-Years Travel Time



APPENDIX D

Vulnerability Analysis for Dalton Cache Border Station Public Drinking Water Source (Charts 1-8)

Chart 1. Susceptibility of the wellhead - Dalton Cache Station

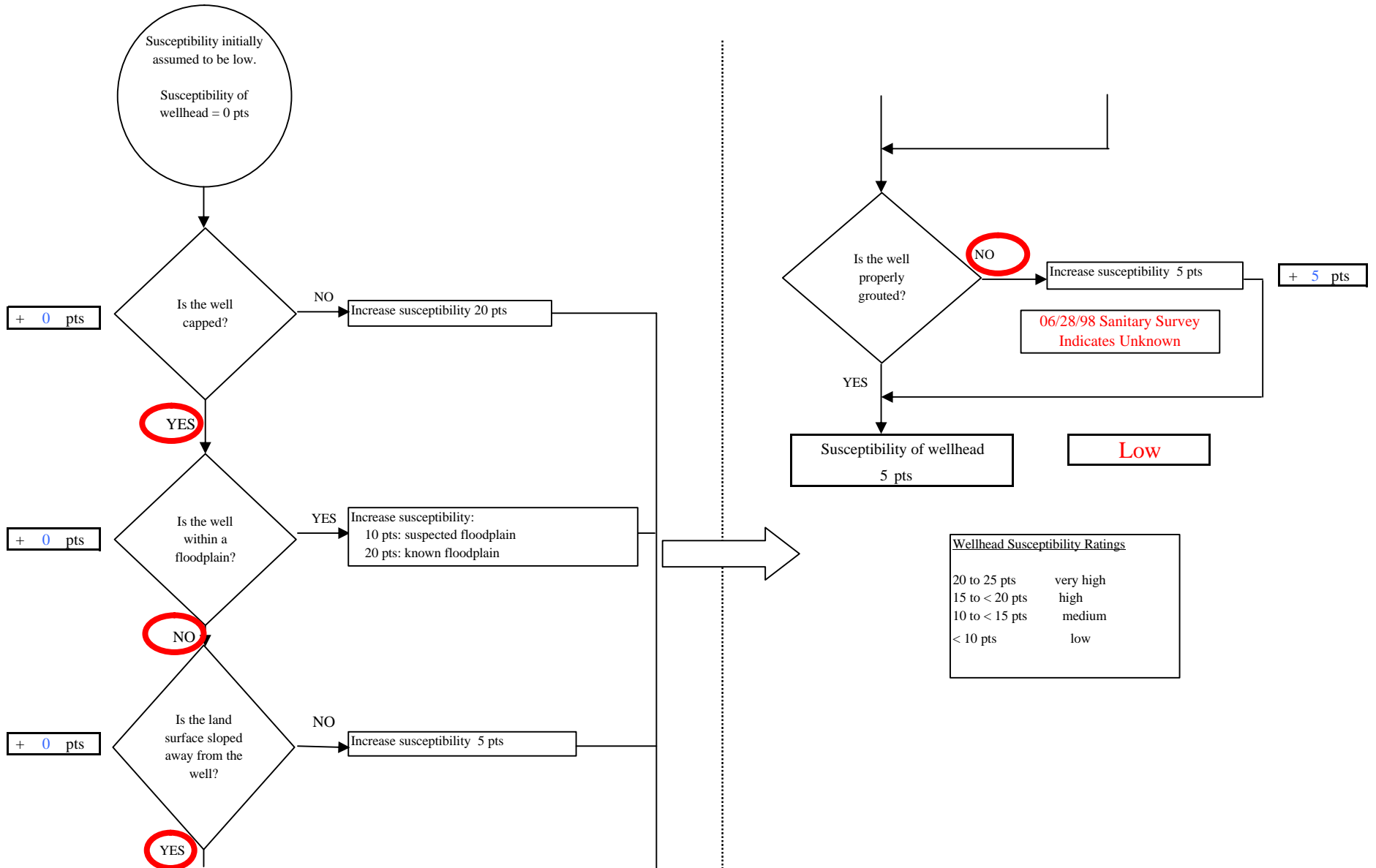


Chart 2. Susceptibility of the aquifer - Dalton Cache Station

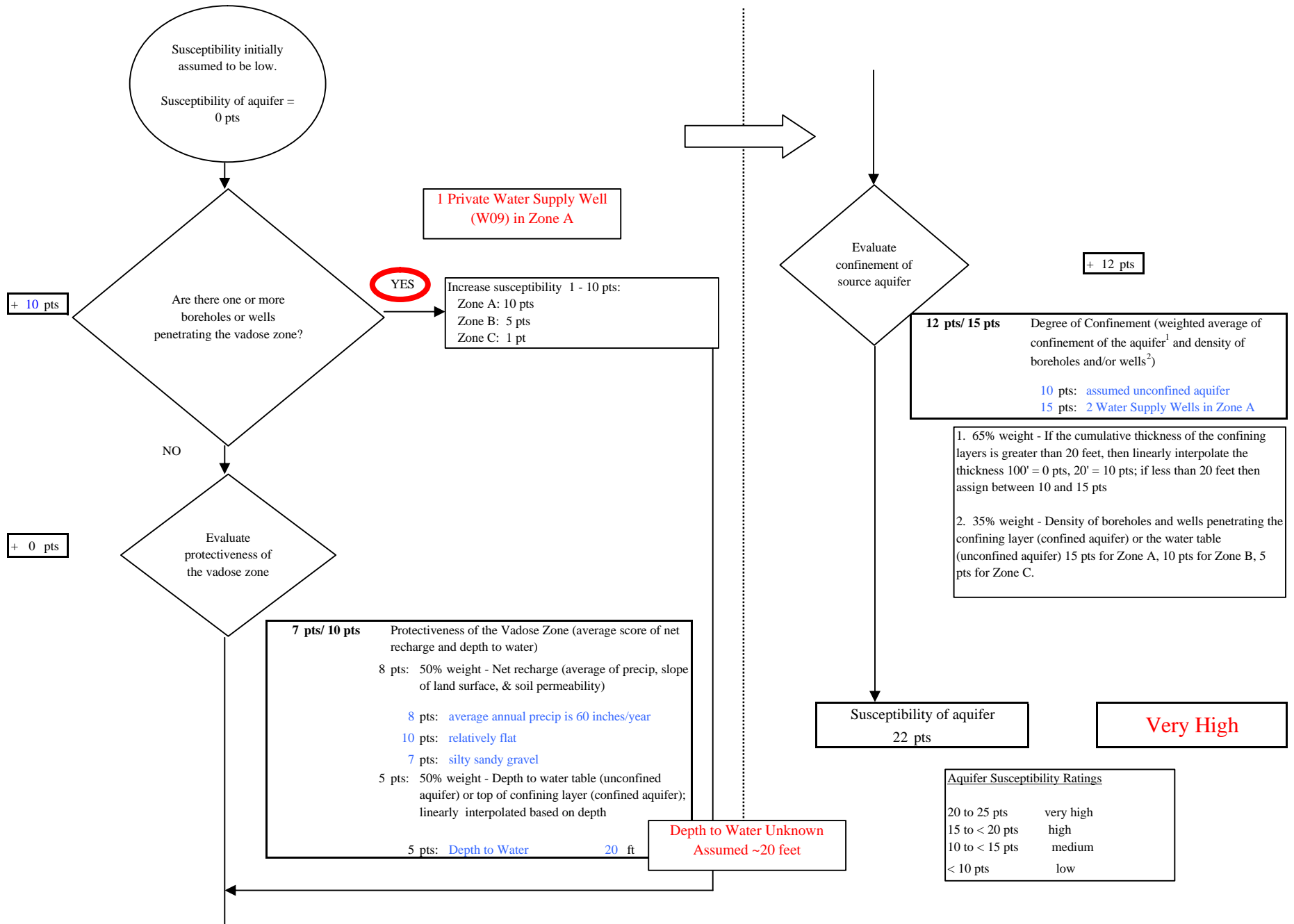
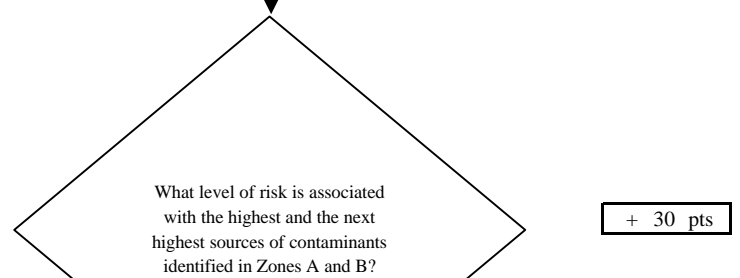
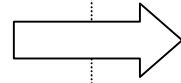
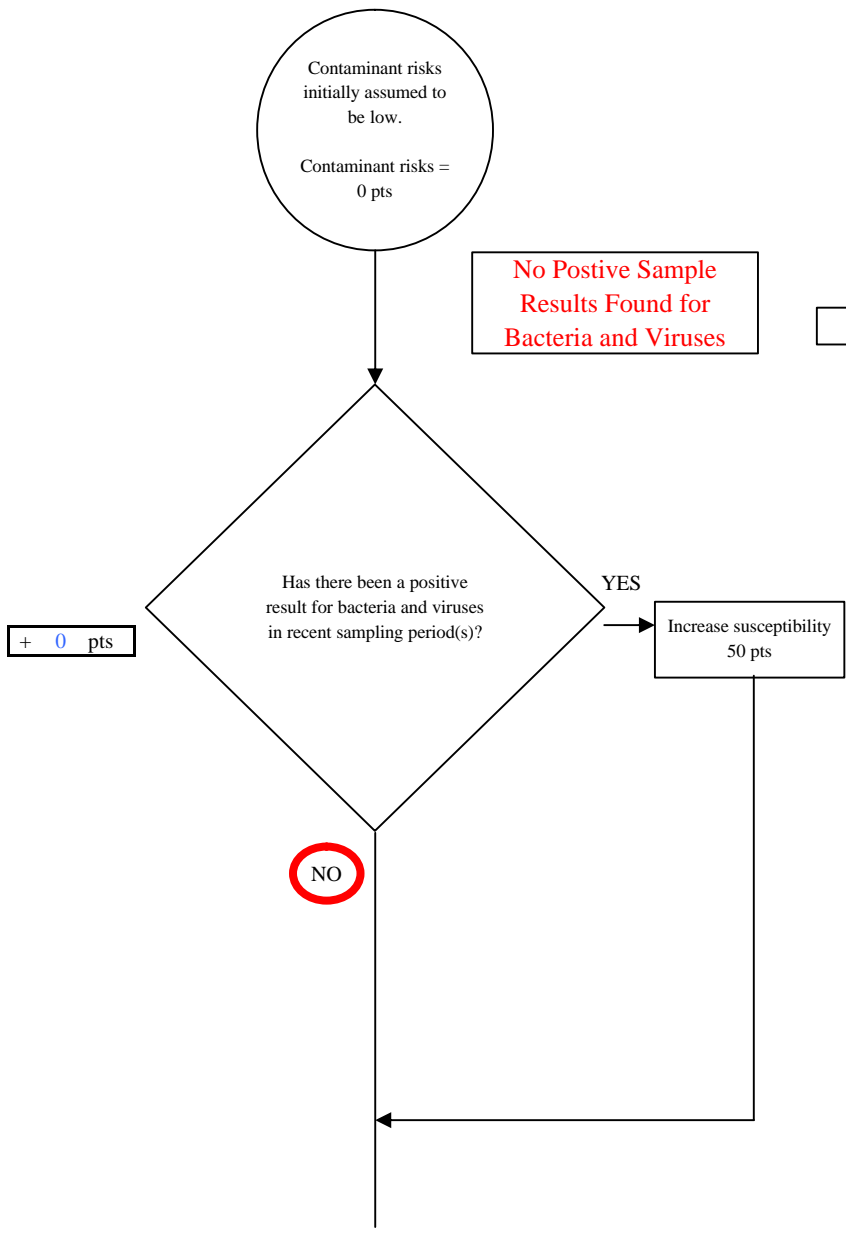


Chart 3. Contaminant risks for Dalton Cache Station - Bacteria & Viruses



Risk Rankings for Contaminant Sources Identified in Zones A and B

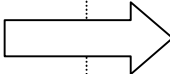
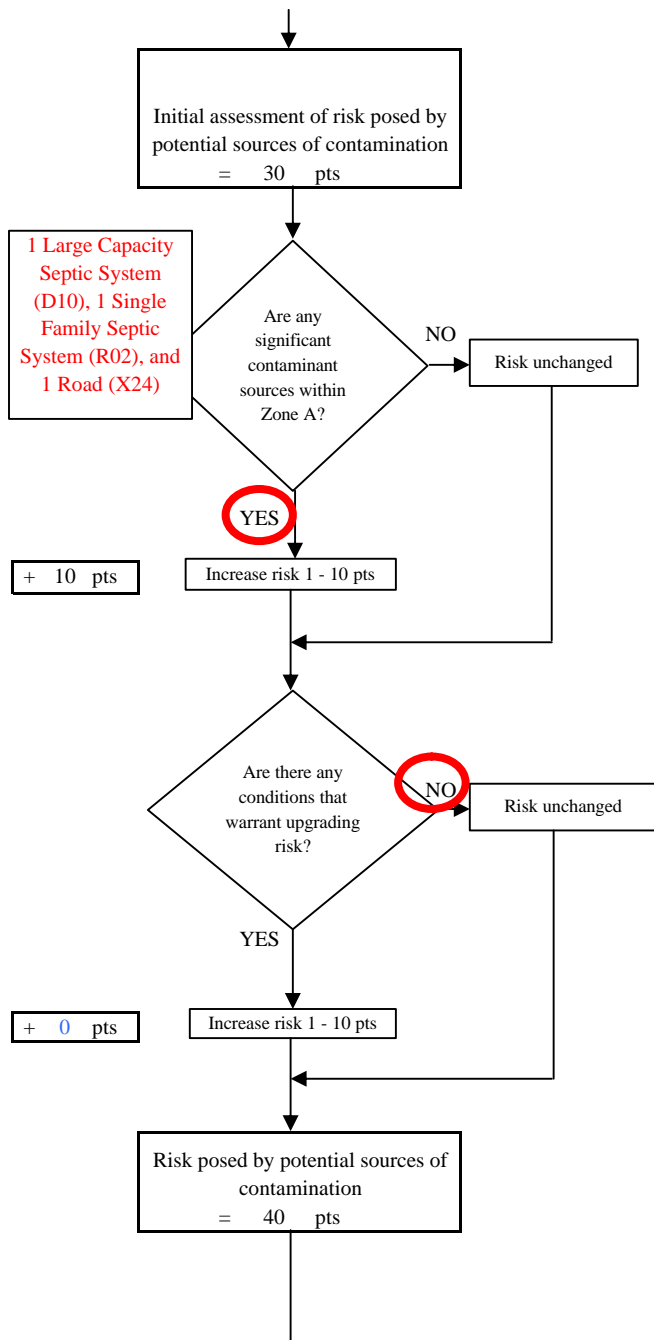
	Zone A	Zone B	Total
Very High(s)	0	0	0
High(s)	1	0	1
Medium(s)	0	0	0
Low(s)	2	0	2

	LOW 10 pts	MEDIUM 20 pts	HIGH 30 pts	VERY HIGH 40 pts
LOW	≥ 10 sources + 10 pts	≥ 10 sources + 5 pts	≥ 20 sources + 5 pts	----
MEDIUM	----	≥ 2 sources + 5 pts	≥ 5 sources + 5 pts	≥ 10 sources + 5 pts
HIGH	----	----	≥ 1 source + 10 pts	≥ 2 sources + 10 pts
VERY HIGH	----	----	----	≥ 1 source + 10 pts

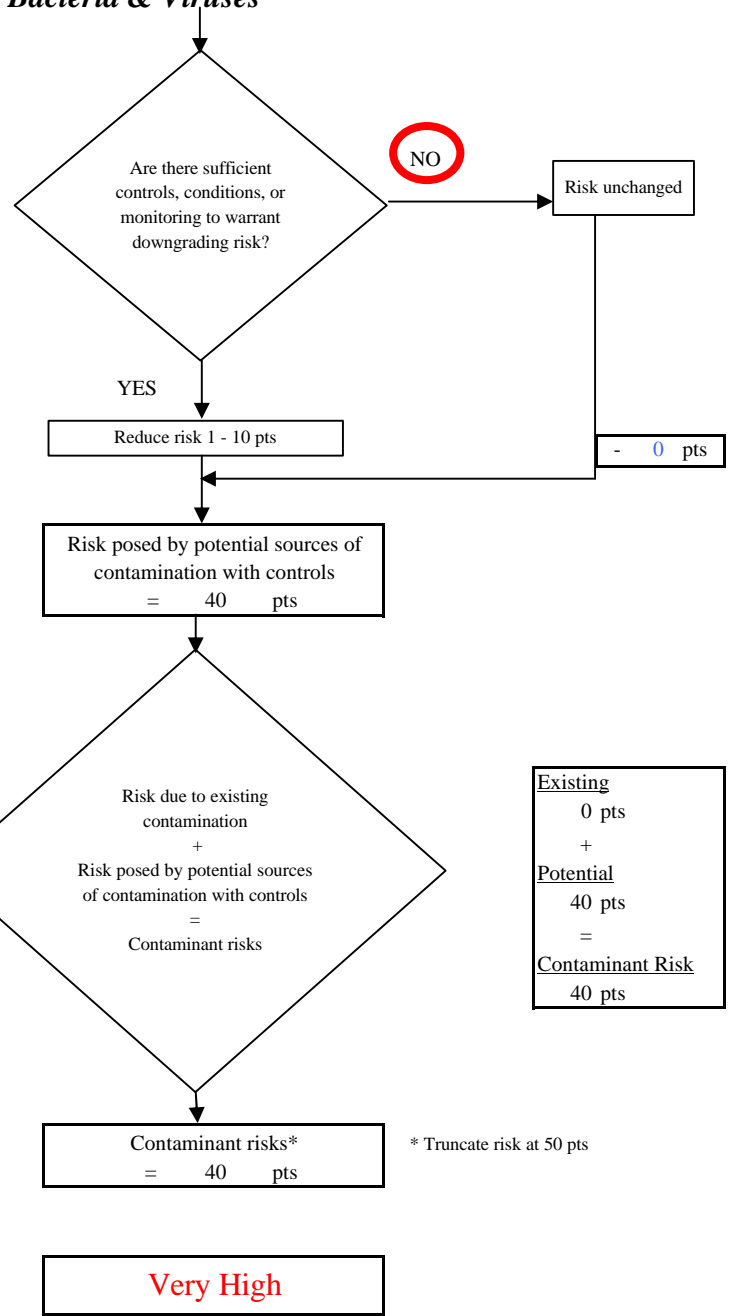
Matrix Score 30

Note: Septic systems, sewerlines, and roads are each assigned a risk ranking for each individual contaminant source in the CSI. The VA, however, counts these contaminant sources as a group and assigns a calculated number of either "lows" or "mediums" based on the density.

Chart 3. Contaminant risks for Dalton Cache Station - Bacteria & Viruses



Contaminant Risk Ratings	
40 to 50 pts	very high
30 to < 40 pts	high
20 to < 30 pts	medium
< 20 pts	low



Existing	0 pts
+	
Potential	40 pts
=	
Contaminant Risk	40 pts

* Truncate risk at 50 pts

Very High

Chart 4. Vulnerability analysis for Dalton Cache Station - Bacteria & Viruses

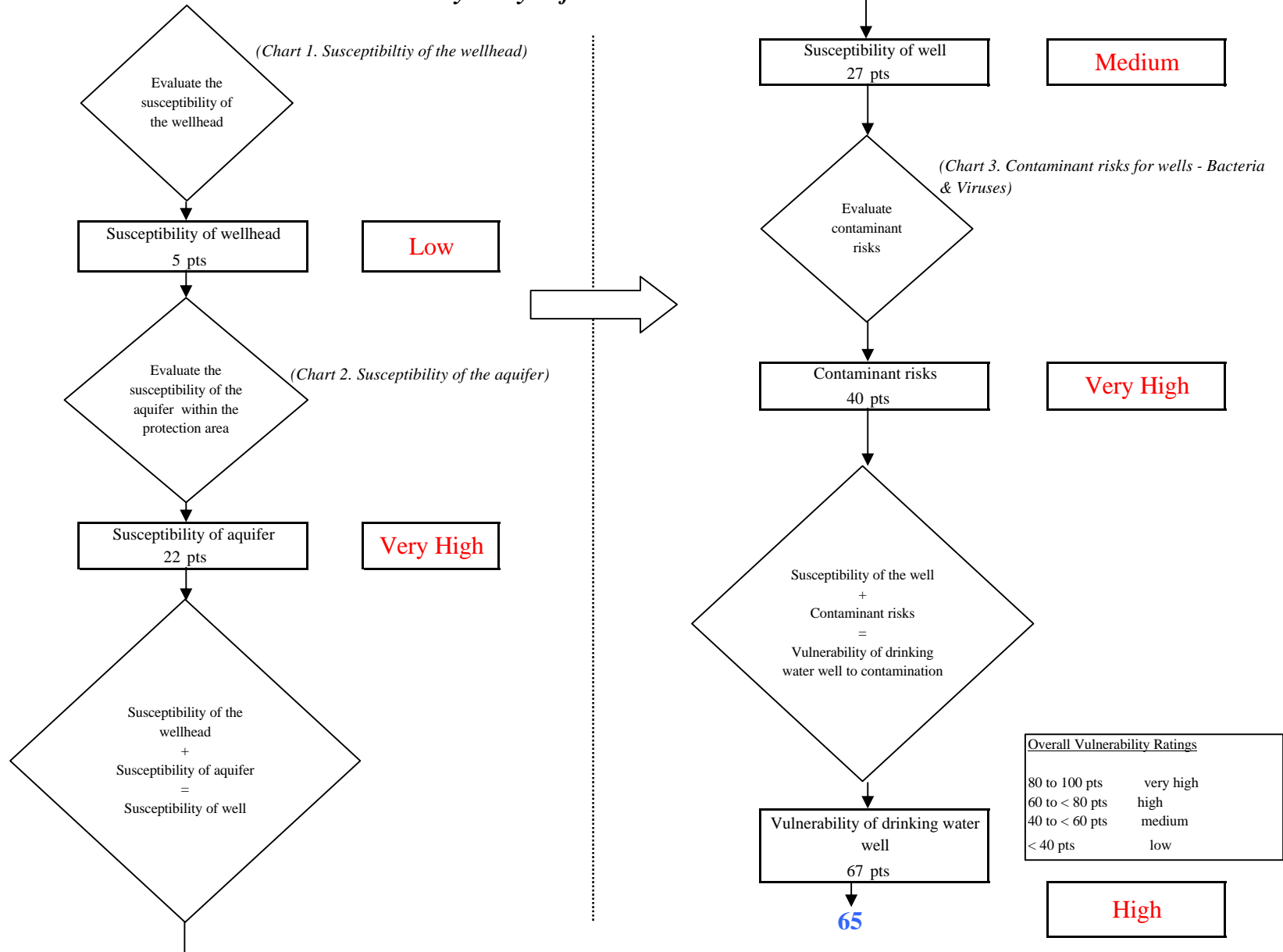


Chart 5. Contaminant risks for Dalton Cache Station - Nitrates and Nitrites

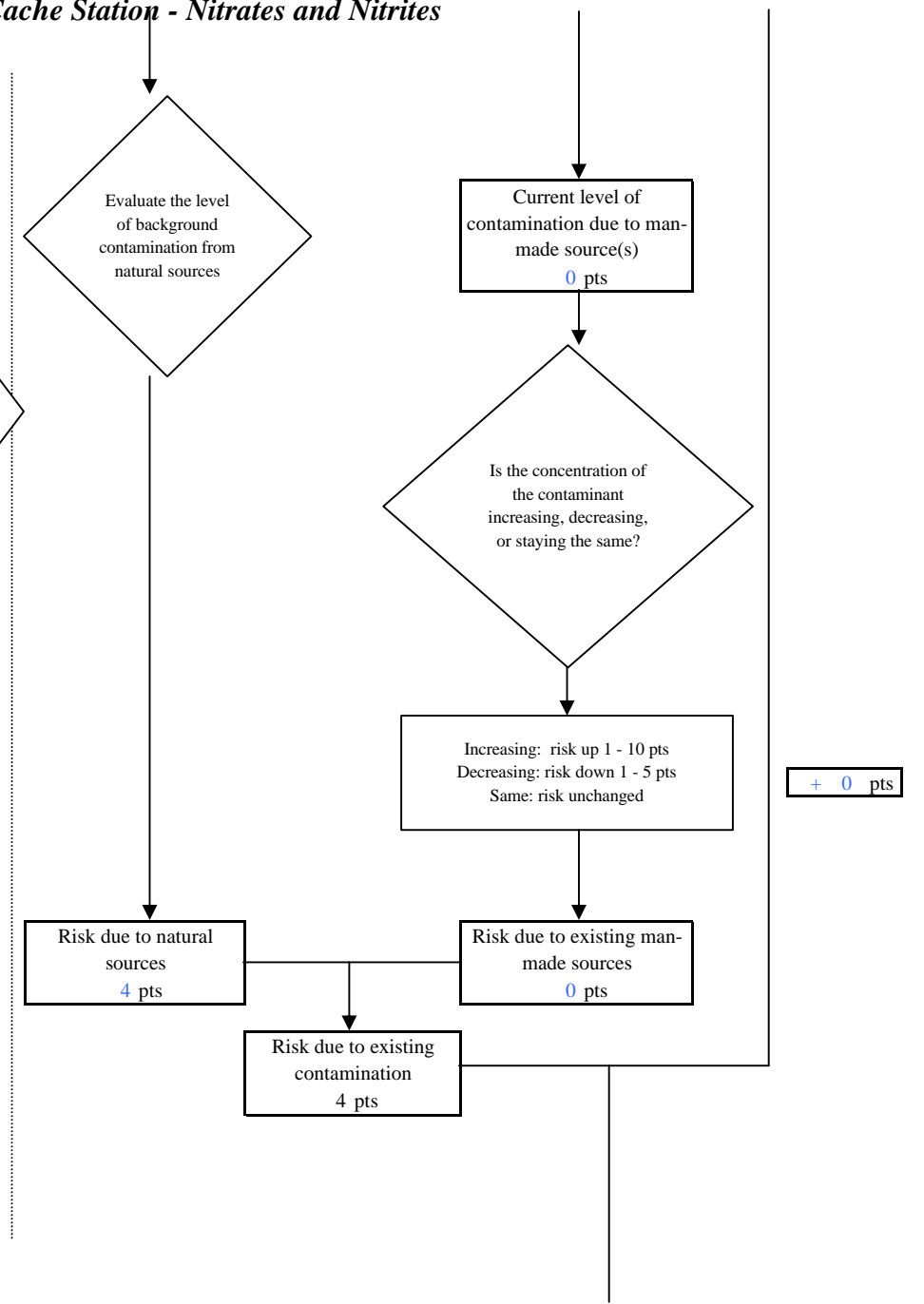
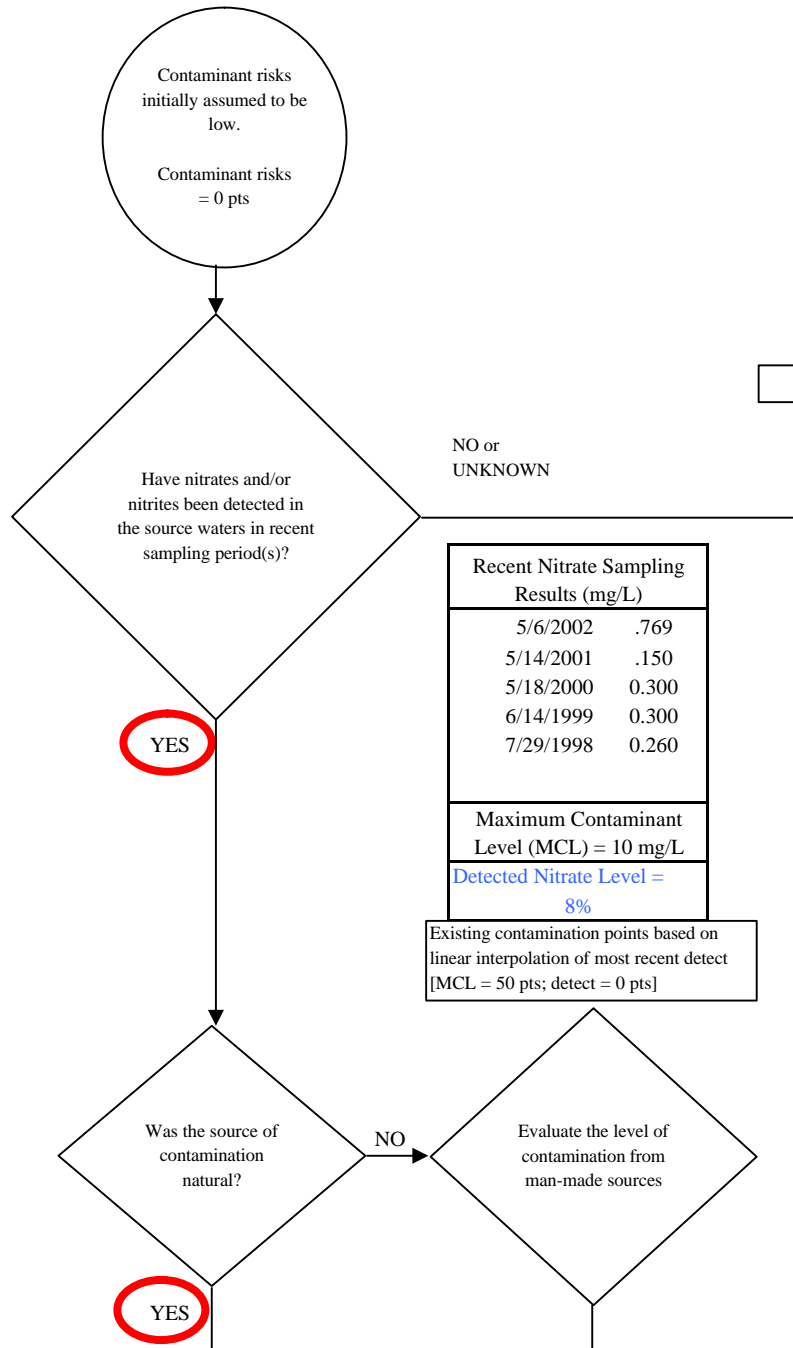


Chart 5. Contaminant risks for Dalton Cache Station - Nitrates and Nitrites

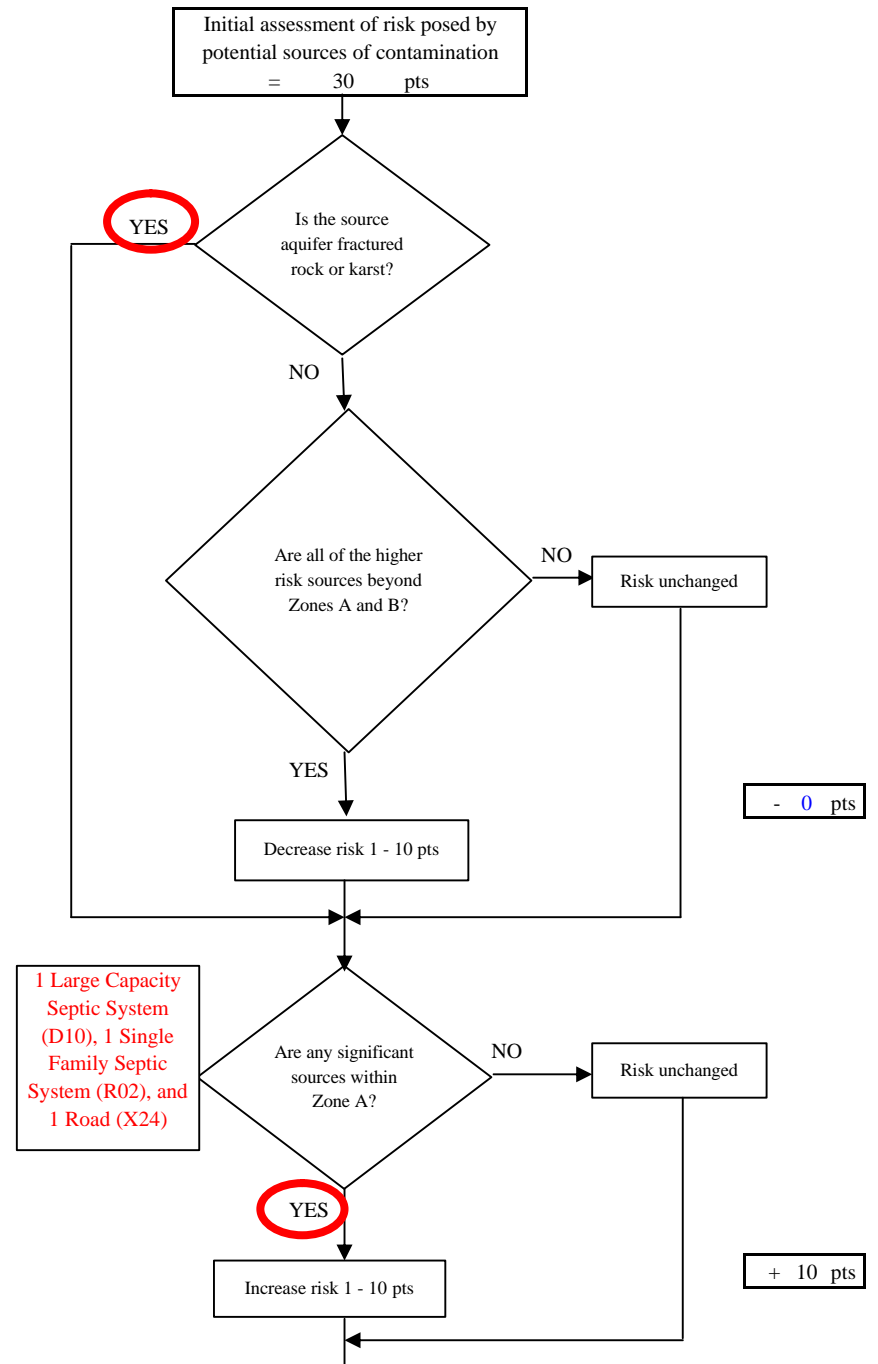
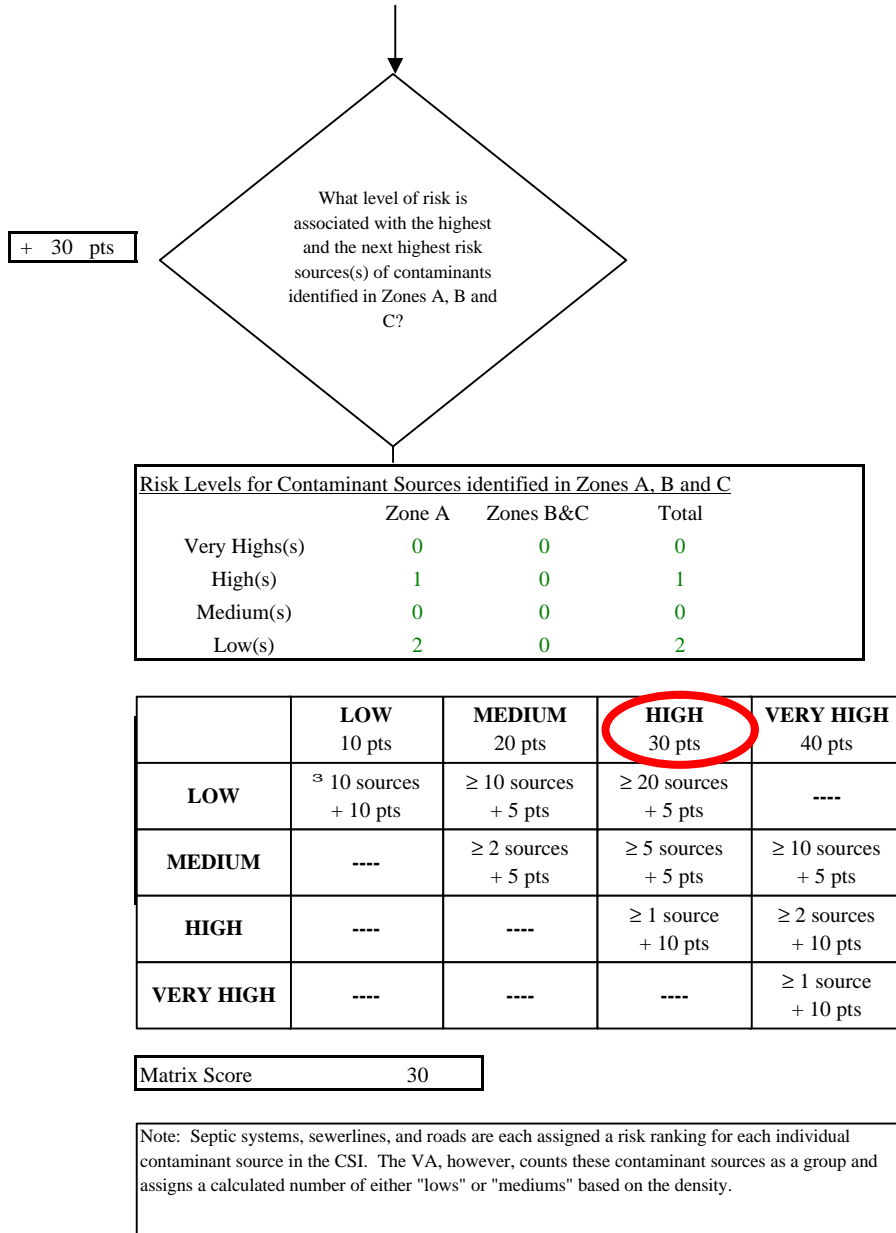


Chart 5. Contaminant risks for Dalton Cache Station - Nitrates and Nitrites

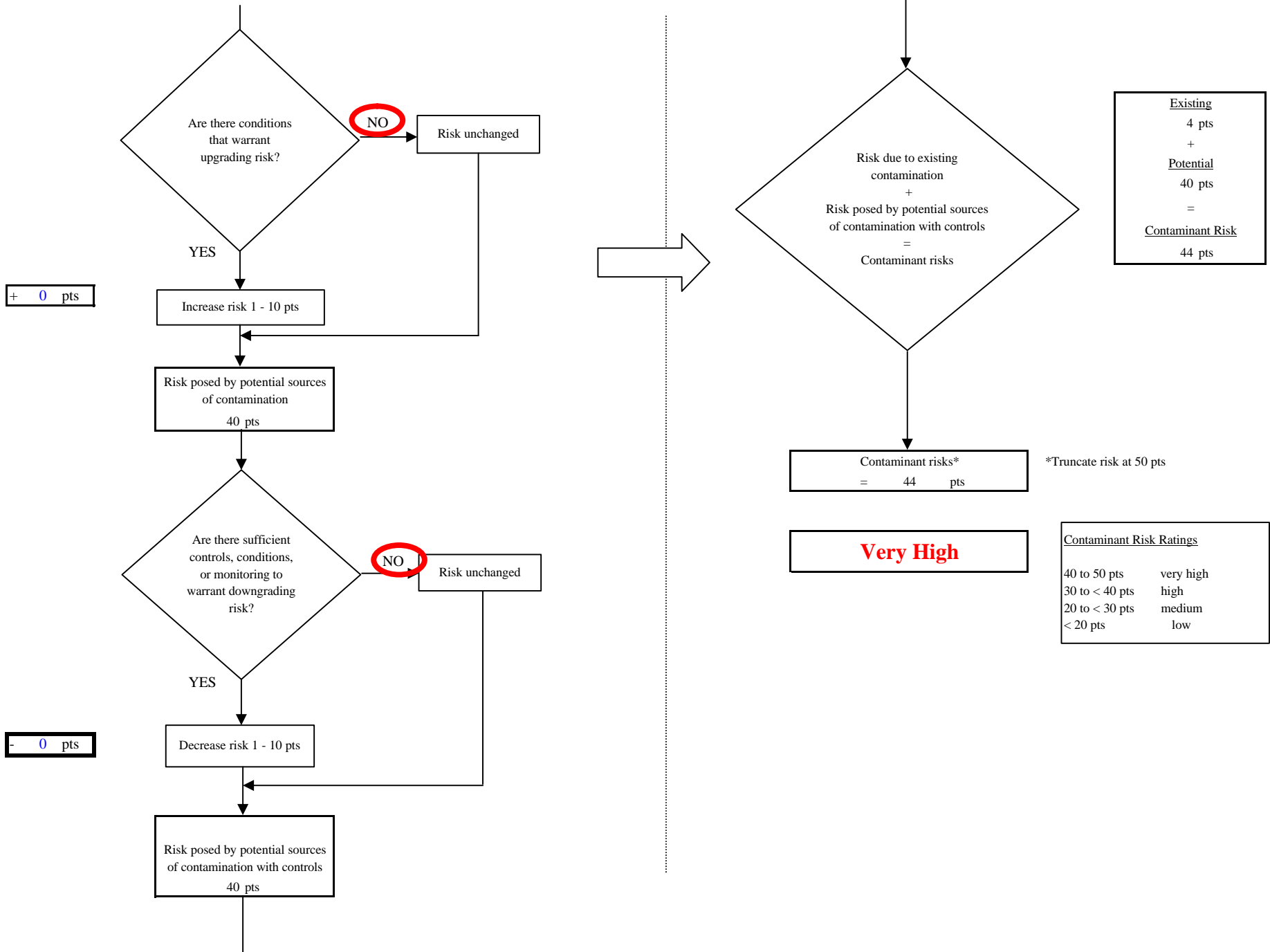


Chart 6. Vulnerability analysis for Dalton Cache Station - Nitrates and Nitrites

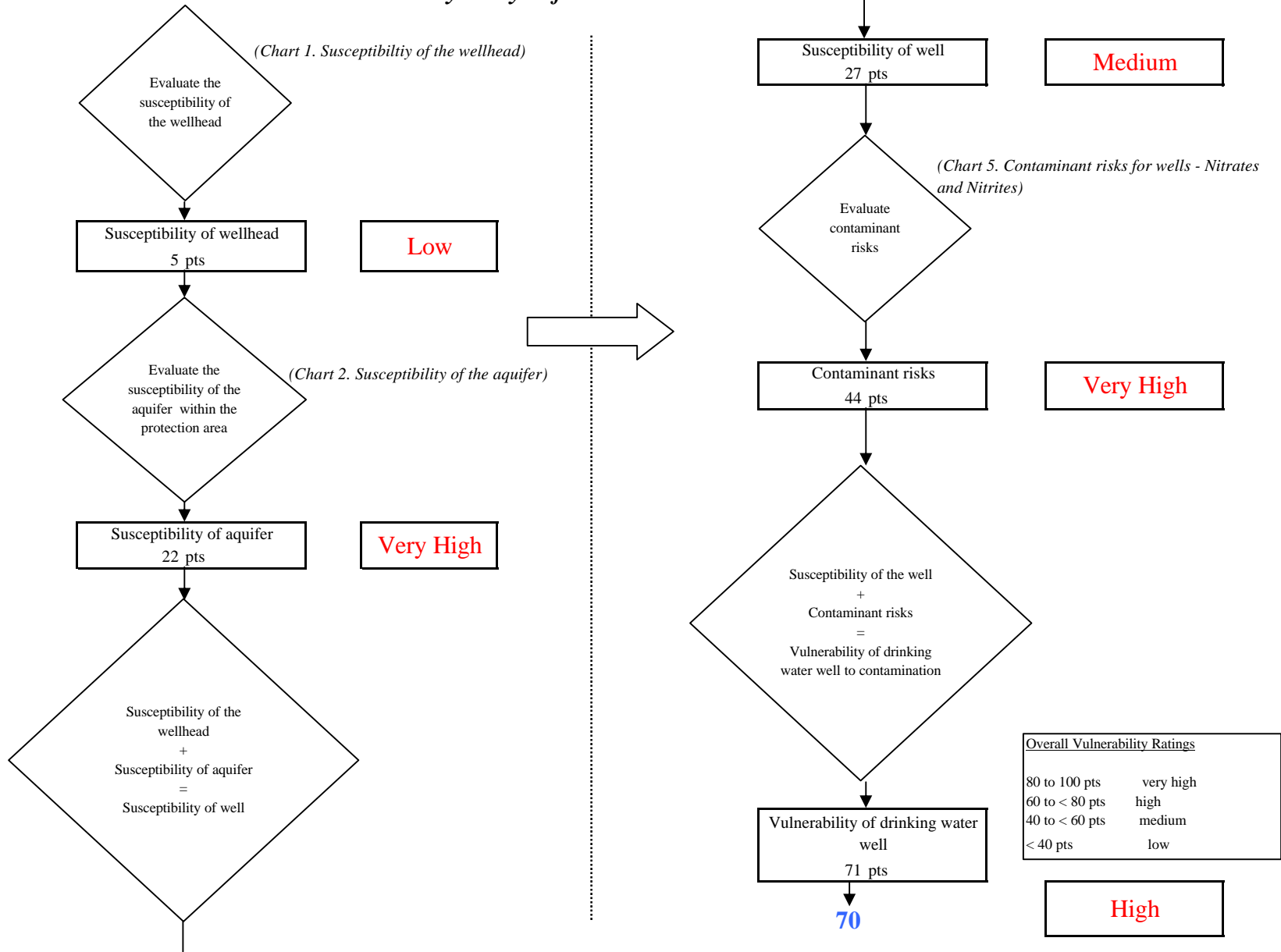


Chart 7. Contaminant risks for Dalton Cache Station - Volatile Organic Chemicals

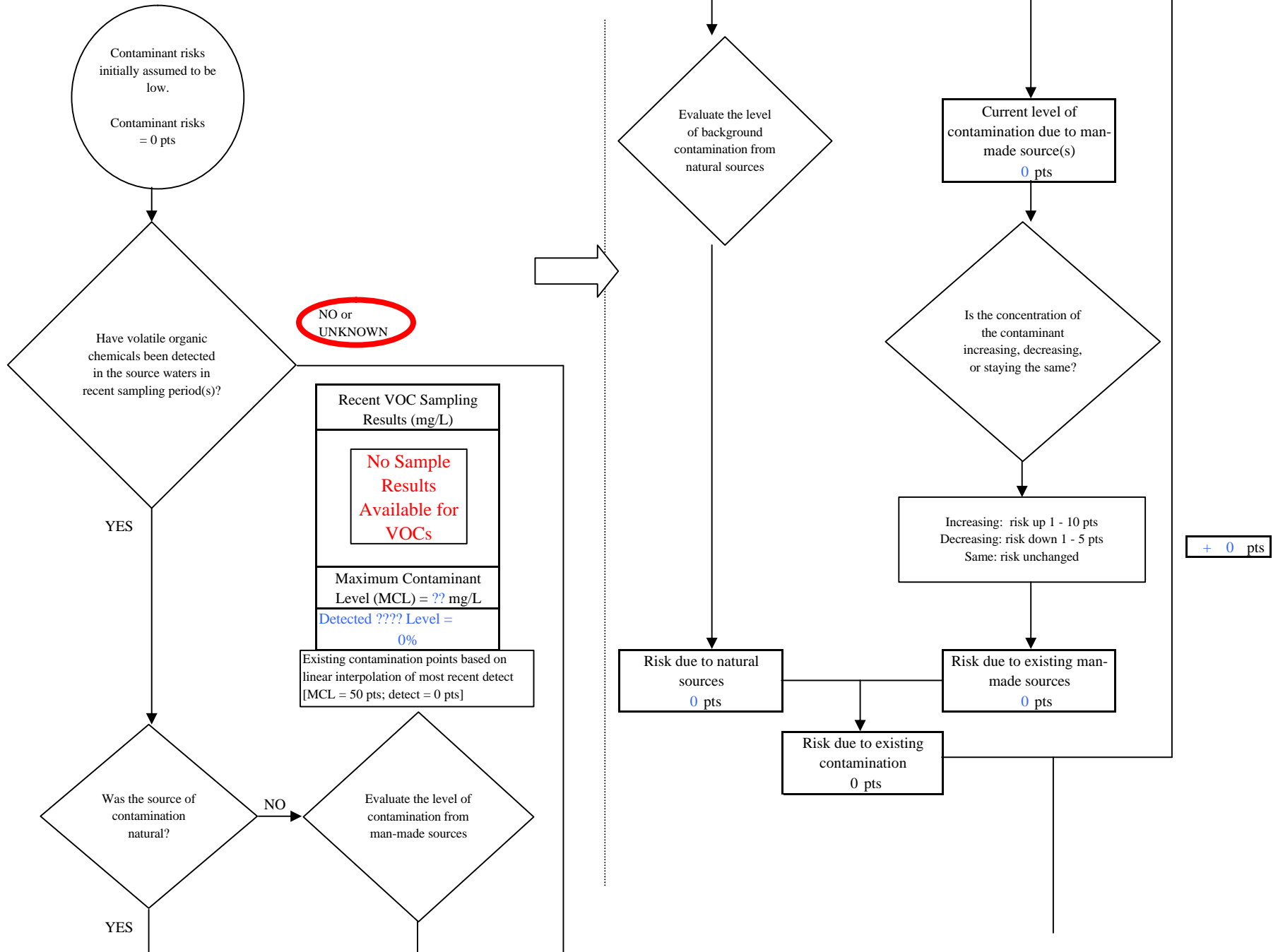


Chart 7. Contaminant risks for Dalton Cache Station - Volatile Organic Chemicals

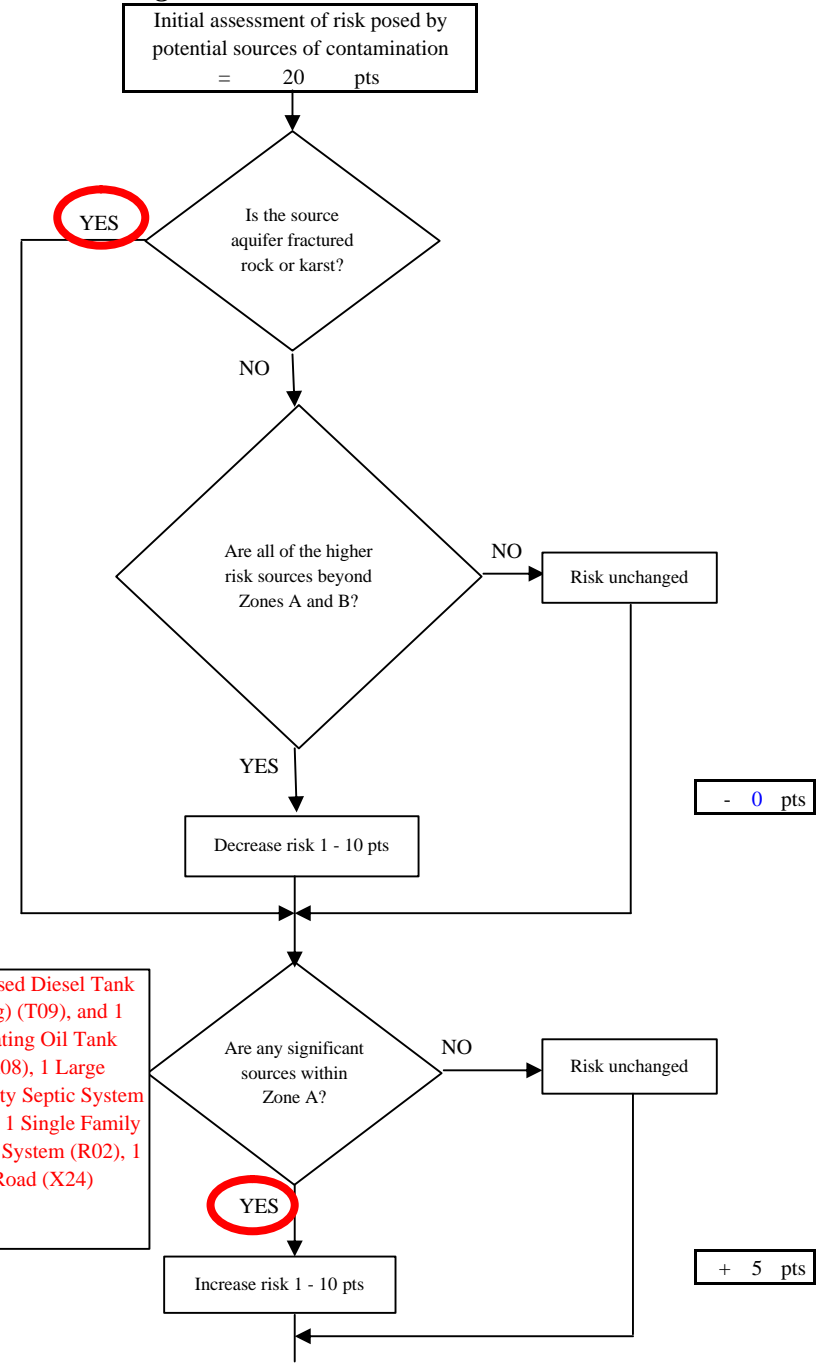
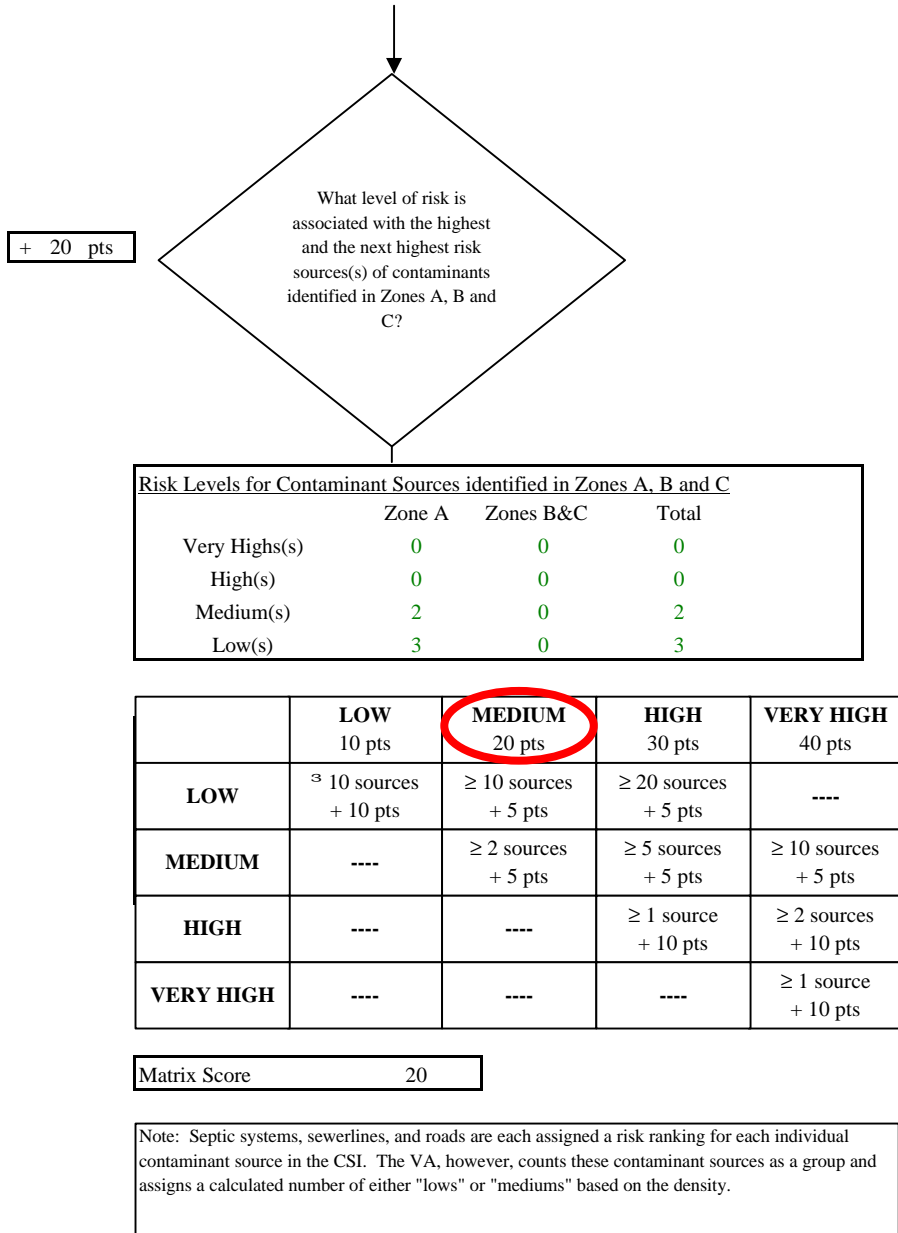
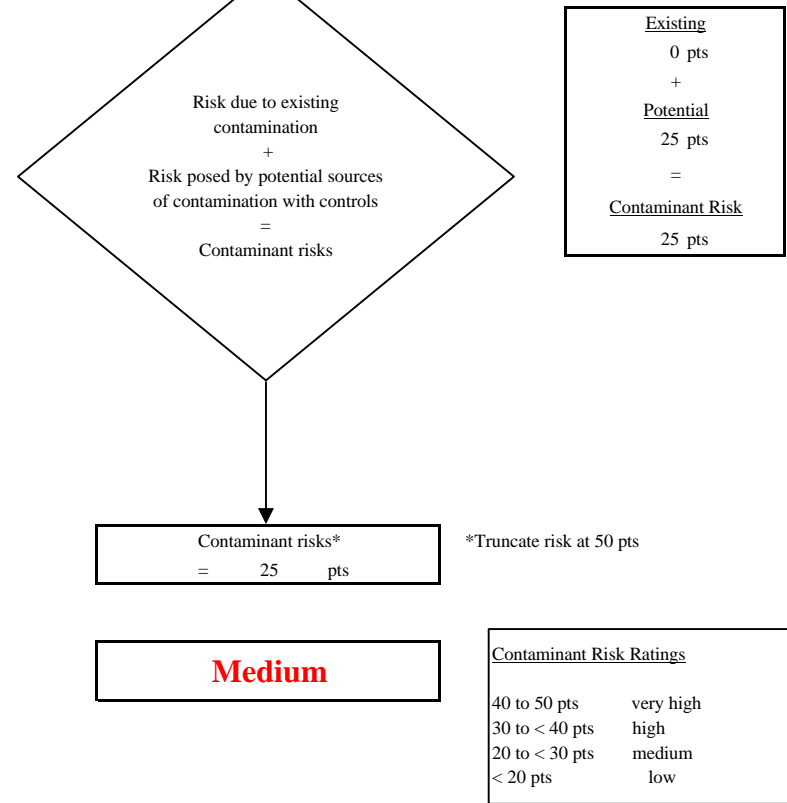
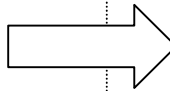
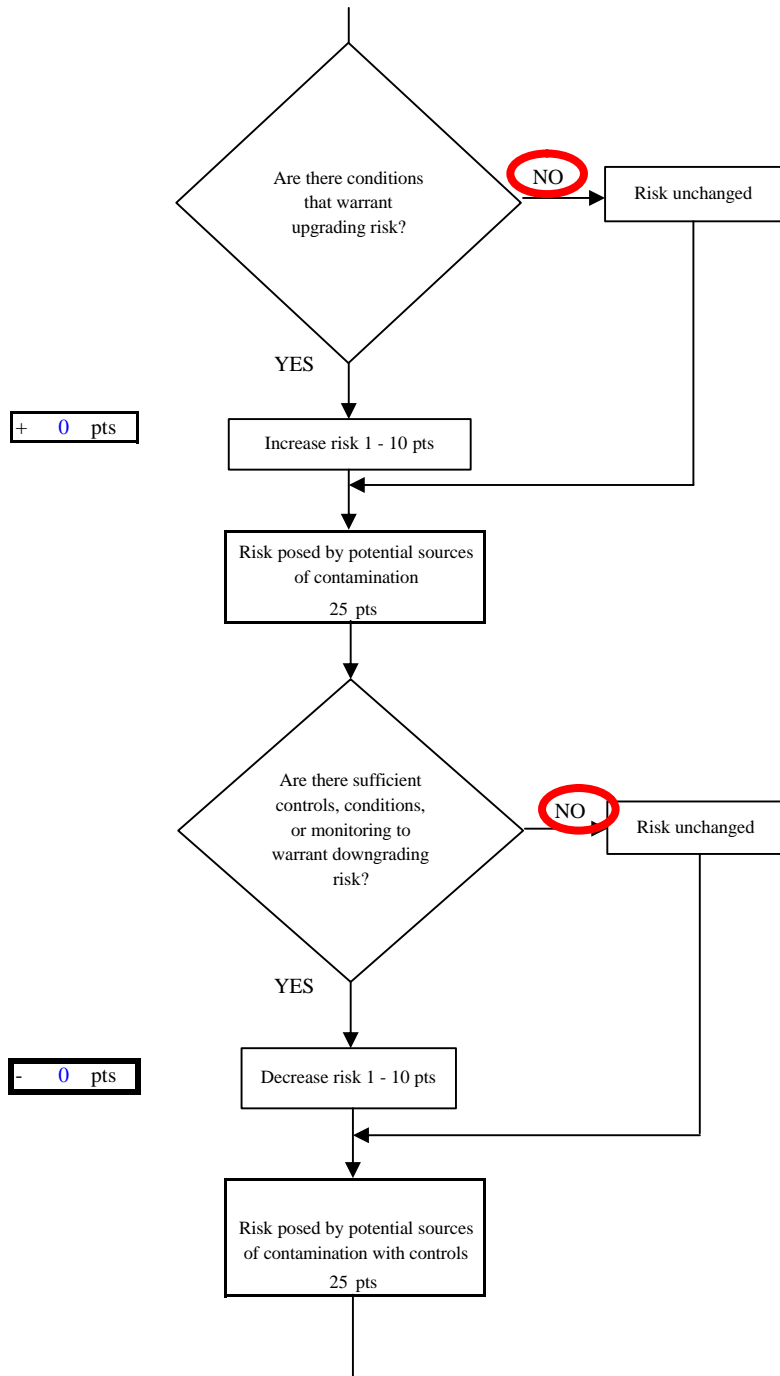


Chart 7. Contaminant risks for Dalton Cache Station - Volatile Organic Chemicals



*Truncate risk at 50 pts

Chart 8. Vulnerability analysis for Dalton Cache Station - Volatile Organic Chemicals

