



Source Water Assessment

A Hydrogeologic Susceptibility and
Vulnerability Assessment for
LKSD Rocky Mountain School
Drinking Water System,
Goodnews Bay, Alaska

PWSID # 270930.001

April 2004

DRINKING WATER PROTECTION PROGRAM REPORT 1108
Alaska Department of Environmental Conservation

Source Water Assessment for LKSD Rocky Mountain School Drinking Water System Goodnews Bay, Alaska

PWSID # 270930.001

DRINKING WATER PROTECTION PROGRAM REPORT 1108

The Drinking Water Protection Program (DWPP) is producing Source Water Assessments in compliance with the Safe Drinking Water Act Amendments of 1996. Each assessment includes a delineation of the source water area, an inventory of potential and existing contaminant sources that may impact the water, a risk ranking for each of these contaminants, and an evaluation of the potential vulnerability of these drinking water sources.

These assessments are intended to provide public water systems owners/operators, communities, and local governments with the best available information that may be used to protect the quality of their drinking water. The assessments combine information obtained from various sources, including the U.S. Environmental Protection Agency, Alaska Department of Environmental Conservation (ADEC), public water system owners/operators, and other public information sources. The results of this assessment are subject to change if additional data becomes available. It is anticipated this assessment will be updated every five years to reflect any changes in the vulnerability and/or susceptibility of public drinking water source. If you have any additional information that may affect the results of this assessment, please contact the Program Coordinator of DWPP, (907) 269-7521.

CONTENTS

EXECUTIVE SUMMARY.....	1	INVENTORY OF POTENTIAL AND EXISTING	
PUBLIC DRINKING WATER SYSTEM	1	CONTAMINANT SOURCES	2
DRINKING WATER PROTECTION AREA.....	2	RANKING OF CONTAMINANT RISKS	2
		VULNERABILITY OF DRINKING WATER	
		SYSTEM	3

TABLES

Table 1. Definition of Zones	2
Table 2. Susceptibility	3
Table 3. Contaminant Risks	4
Table 4. Overall Vulnerability.....	4

APPENDICES

APPENDIX	A. LKSD Rocky Mountain School Drinking Water Protection Area (Map A)
	B. Contaminant Source Inventory for LKSD Rocky Mountain School (Table 1) Contaminant Source Inventory and Risk Ranking for LKSD Rocky Mountain School – Bacteria and Viruses (Table 2) Contaminant Source Inventory and Risk Ranking for LKSD Rocky Mountain School – Nitrates/Nitrites (Table 3) Contaminant Source Inventory and Risk Ranking for LKSD Rocky Mountain School – Volatile Organic Chemicals (Table 4) Contaminant Source Inventory and Risk Ranking for LKSD Rocky Mountain School – Heavy Metals, Cyanide and Other Inorganic Chemicals (Table 5) Contaminant Source Inventory and Risk Ranking for LKSD Rocky Mountain School – Synthetic Organic Chemicals (Table 6) Contaminant Source Inventory and Risk Ranking for LKSD Rocky Mountain School – Other Organic Chemicals (Table 7)
	C. LKSD Rocky Mountain School Drinking Water Protection Area and Potential and Existing Contaminant Sources (Map C)
	D. Vulnerability Analysis for Contaminant Source Inventory and Risk Ranking for LKSD Rocky Mountain School Public Drinking Water Source (Charts 1 – 14)

Source Water Assessment for LKSD Rocky Mountain School Source of Public Drinking Water, Goodnews Bay, Alaska

Drinking Water Protection Program Alaska Department of Environmental Conservation

EXECUTIVE SUMMARY

The LKSD Rocky Mountain School has one Public Water System (PWS) well. The well (PWS No. 270930.001) has been used as a drinking water source since it was drilled in 1980.

The well is a Class A (community and non-transient non-community) water system located at 153 Village Road in Goodnews Bay, Alaska. Available records indicate that there is no secondary storage of drinking water, other than the pressure tanks, and that the untreated drinking water source is derived directly from the wellhead. This system operates seasonally and serves approximately 7 residents and 93 non-residents through one service connection. The wellhead received a susceptibility rating of **Very High** and the aquifer received a susceptibility rating of **Medium**. Combining these two ratings produce a **High** rating for the natural susceptibility of the well.

Identified potential and current sources of contaminants for the public drinking water source include: Laundromats, motor/motor vehicle repair shops, domestic wastewater treatment plant disposal ponds/lagoons, domestic wastewater collection systems, a large capacity septic system, landfills, aboveground fuel tanks, cemeteries, petroleum product bulk station/terminals, an airport, roads, a pipeline, electric power generation, a firehouse, medical/veterinary facilities, placer mining, and a quarry. These identified potential and existing sources of contamination are considered as sources of bacteria and viruses, nitrates and/or nitrites, volatile organic chemicals, heavy metals, cyanide and other inorganic chemicals, synthetic organic chemicals, and other organic chemicals contaminant categories.

Overall, the water well received a vulnerability rating of **Very High** for the bacteria and viruses, nitrates and nitrites, volatile organic chemicals, synthetic organic chemicals, and other organic chemicals, and a vulnerability rating of **High** for heavy metals, cyanide and other inorganic chemicals contaminant categories.

PUBLIC DRINKING WATER SYSTEM

The Goodnews Bay well is a Class A (community/non-transient/non-community) public water system. The system is located south and center of the village of Goodnews Bay, Alaska (Sec. 21, T12S, R73W, Seward Meridian; see Map A of Appendix A). Goodnews Bay is located on the north shore of Goodnews Bay at the mouth of Goodnews River. The community is located 116 air miles south of Bethel, 110 miles northwest of Dillingham, and 400 miles west of Anchorage. The community has a population of 245 (ADCED, 2003). Average annual precipitation in Goodnews Bay is 22 inches, including approximately 43 inches of snowfall. Temperatures range from 41 to 57°F in summer and 6 to 24°F in winter.

The community of Goodnews Bay obtains most of their water supply from community wells. Major infrastructure for a piped water and vacuum sewer system are under construction. In the meantime, honeybuckets are hauled by the City of Goodnews Bay (ADCED, 2003). Goodnews Bay receives electrical power from AVEC, operated by the REA Cooperative. Power generating facilities are fueled by diesel. Refuse is collected by individuals and transported to the landfill (ADCED, 2003).

According to information supplied by ADEC for the LKSD Rocky Mountain School PWS, the depth of the primary water well is 293 feet below the ground surface and is screened in an unconfined aquifer based on available construction details. The well is not located within a floodplain.

Information acquired from a September 2002 sanitary survey for the public water system indicated that the land surface was not sloped away from the well. Generally, land surfaces that slope away from the wellhead promote surface water drainage, which reduces the potential of contaminant migration down the well casing annulus. The sanitary survey indicates that it is unknown if the well is grouted according to ADEC regulations. Given the date of well construction (1980), it is assumed that the well is not grouted properly. Proper grouting provides

added protection against contaminants traveling along the well casing annulus and into source waters.

The entire Bristol Bay area was formerly covered by glaciers and the topography is representative of a postglacial area. Soils information is limited. Generally, the soils consist of silty sand overlying relatively clean sand. The silty soils are slightly frost-susceptible. Isolated pockets of permafrost are scattered throughout the area (DOWL, 1982).

DRINKING WATER PROTECTION AREA

In order to evaluate whether a drinking water source is at risk, we must first evaluate what are the most likely pathways for surface contamination to reach the groundwater. These areas are determined by looking at the characteristics of the soil, groundwater, aquifer, and well.

The most probable area for contamination to reach the drinking water well is the area that contributes water to the well, the groundwater recharge area. This area is designated as the drinking water protection area (DWPA). Because releases of contaminants within the protection area are most likely to impact the drinking water well, this area will serve as the focus for voluntary protection efforts. An analytical calculation was used to determine the size and shape of the DWPA for the LKSD Rocky Mountain School PWS. The input parameters describing the attributes of the aquifer in this calculation were adopted from Groundwater (Freeze and Cherry, 1979). Available geology and groundwater contours were also considered to take into account any uncertainties in groundwater flow and aquifer characteristics to arrive at a meaningful protection area.

The protection areas established for wells by the ADEC are usually separated into four zones, limited by the watershed. These zones correspond to differences in the time-of-travel (TOT) of the water moving through the aquifer to the well (Please refer to the Guidance Manual for Class A Public Water Systems for additional information).

The time of travel for contaminants within the water varies and is dependent on the physical and chemical characteristics of each contaminant. The following is a summary of the four protection area zones for wells and the calculated time -of-travel for each:

Table 1. Definition of Zones

Zone	Definition
A	¼ the distance for the 2-yr. time -of-travel

B	Less than the 2 year time-of-travel
C	Less Than the 5 year time -of-travel
D	Less than the 10 year time -of-travel

The DWPA for the LKSD Rocky Mountain School PWS was determined using an analytical calculation and includes Zones A, B, C, and D (See Map A of Appendix A).

INVENTORY OF POTENTIAL AND EXISTING CONTAMINANT SOURCES

The Drinking Water Protection Program has completed an inventory of potential and existing sources of contamination within the LKSD Rocky Mountain School DWPA. This inventory was completed through a search of agency records and other publicly available information. Potential sources of contamination to the drinking water aquifer include a wide range of categories and types. Potential drinking water contaminants are found within agricultural, residential, commercial, and industrial areas, but can also occur within areas that have little or no development.

For the basis of all Class A public water system assessments, six categories of drinking water contaminants were inventoried. They include:

- Bacteria and viruses,
- Nitrates and/or nitrites,
- Volatile organic chemicals,
- Heavy metals, cyanide and other inorganic chemicals,
- Synthetic organic chemicals,
- Other organic chemicals.

The sources are displayed on Map C of Appendix C and summarized in Table 1 of Appendix B.

RANKING OF CONTAMINANT RISKS

Once the potential and existing sources of contamination have been identified, they are assigned a ranking according to what type and level of risk they represent. Ranking of contaminant risks for a “potential” or “existing” source of contamination is a function of toxicity and volumes of specific contaminants associated with that source. Rankings include:

- Low,
- Medium,
- High, and
- Very High.

The time-of-travel for contaminants within the water varies and is dependent on the physical and chemical characteristics of each contaminant. Bacteria and Viruses are only inventoried in Zones A and B because of their short life span. Only “Very High” and “High” rankings are inventoried within the outer Zone D due to the probability of contaminant dilution by the time the contaminants get to the well. Tables 2 through 4 in Appendix B contain the ranking of potential and existing sources of contamination with respect to bacteria and viruses, nitrates and/or nitrites, volatile organic chemicals, heavy metals, cyanide and other inorganic chemicals, synthetic organic chemicals, and other organic chemicals.

VULNERABILITY OF THE DRINKING WATER SYSTEM

Vulnerability of a drinking water source to contamination is a combination of two factors:

- Natural susceptibility, and
- Contaminant risks.

Appendix D contains fourteen charts, which together form the ‘Vulnerability Analysis’ for a source water assessment for a public drinking water source. Chart 1 analyzes the ‘Susceptibility of the Wellhead’ to contamination by looking at the construction of the well and its surrounding area. Chart 2 analyzes the ‘Susceptibility of the Aquifer’ to contamination by looking at the naturally occurring attributes of the water source and influences on the groundwater system that might lead to contamination. Chart 3 analyzes ‘Contaminant Risks’ for the drinking water source with respect to bacteria and viruses. The ‘Contaminant Risks’ portion of the analysis considers potential sources of contaminants as well as a review of contamination that has or may have occurred, but has not arrived or been detected at the well. Chart 4 contains the ‘Vulnerability Analysis for Bacteria and Viruses’. Charts 5 through 14 contain the Contaminant Risks and Vulnerability Analyses for nitrates and nitrites, volatile organic chemicals, heavy metals, cyanide and other inorganic chemicals, synthetic organic chemicals, and other organic chemicals, respectively.

A score for the Natural Susceptibility is reached by considering the properties of the well and the aquifer.

Susceptibility of the Wellhead (0 – 25 Points)
(Chart 1 of Appendix D)

+

Susceptibility of the Aquifer (0 – 25 Points)
(Chart 2 of Appendix D)

=

Natural Susceptibility (Susceptibility of the Well)
(0 – 50 Points)

A ranking is assigned for the Natural Susceptibility according to the point score:

Natural Susceptibility Ratings	
40 to 50 pts	Very High
30 to < 40 pts	High
20 to < 30 pts	Medium
< 20 pts	Low

The LKSD Rocky Mountain School’s water well is in an unconfined aquifer. Unconfined aquifers are more susceptible to potential groundwater quality impacts posed by the migration of surface water contaminants downward from the surface. Table 2 shows the susceptibility scores and ratings for this PWS.

Table 2. Susceptibility

	Score	Rating
Susceptibility of the Wellhead	25	Very High
Susceptibility of the Aquifer	14	Medium
Natural Susceptibility	39	High

Contaminant risks to a drinking water source depend on the type, number or density, and distribution of contaminant sources. This score has been derived from an examination of existing and historical contamination that has been detected at the drinking water source through routine sampling. It also evaluates potential sources of contamination. Flow charts are used to assign a point score, and ratings are assigned in the same way as for the natural susceptibility:

Contaminant Risk Ratings	
40 to 50 pts	Very High
30 to < 40 pts	High
20 to < 30 pts	Medium
< 20 pts	Low

Table 3 summarizes the Contaminant Risks for each category of drinking water contaminants.

Table 3. Contaminant Risks

Category	Score	Rating
Bacteria and Viruses	50	Very High
Nitrates and/or Nitrites	50	Very High
Volatile Organic Chemicals	50	Very High
Heavy Metals, Cyanide and		
Other Inorganic Chemicals	40	Very High
Synthetic Organic Chemicals	50	Very High
Other Organic Chemicals	50	Very High

Finally, an overall vulnerability score is assigned for each water system by combining each of the contaminant risk scores with the natural susceptibility score:

$$\begin{array}{r}
 \text{Natural Susceptibility (0 – 50 points)} \\
 + \\
 \text{Contaminant Risks (0 – 50 points)} \\
 = \\
 \text{Vulnerability of the} \\
 \text{Drinking Water Source to Contamination (0 – 100).}
 \end{array}$$

Again, rankings are assigned according to a point score:

Overall Vulnerability Ratings	
80 to 100 pts	Very High
60 to < 80 pts	High
40 to < 60 pts	Medium
< 40 pts	Low

Table 4 contains the overall vulnerability scores (0–100) and ratings for each of the six categories of drinking water contaminants. Note: scores are rounded off to the nearest five.

Table 4. Overall Vulnerability

Category	Score	Rating
Bacteria and Viruses	90	Very High
Nitrates and Nitrites	90	Very High
Volatile Organic Chemicals	90	Very High
Heavy Metals, Cyanide and		
Other Inorganic Chemicals	75	High
Synthetic Organic Chemicals	90	Very High

Other Organic Chemicals 90 Very High

Bacteria and Viruses

The contaminant risk for bacteria and viruses is **Very High**. The risk is primarily attributed to the presence of a domestic wastewater treatment plant disposal pond/lagoon, a large capacity septic system, and a landfill located in Zone A (see Table 2 – Appendix B).

No positive bacteria counts have been reported in recent (within five years) sampling events (See Chart 3 – Contaminant Risks for Bacteria and Viruses in Appendix D). Only a small amount of bacteria and viruses are required to endanger public health.

After combining the contaminant risk for bacteria and viruses with the natural susceptibility of the well, the overall vulnerability of the well to contamination is **Very High**.

Nitrates and Nitrites

The contaminant risk for nitrates and nitrites is **Very High**. The risk to this source of public drinking water is primarily attributed to the presence of a domestic wastewater treatment plant disposal pond/lagoon, a large capacity septic system, and a landfill located in Zone A (see Table 3 – Appendix B).

Nitrates are very mobile, moving at approximately the same rate as water. The sampling history for this well indicates that low levels of nitrates have been detected in recent sampling events. However, the reported concentrations of nitrates do not exceed the maximum contaminant level (MCL) of 10 mg/L. Nitrate concentrations in uncontaminated groundwater are typically less than 2 mg/L; therefore, nitrate concentrations above 2 mg/L may be indicative of man-made sources (See Chart 5 - Contaminant Risks for Nitrates and/or Nitrites in Appendix D).

Nitrate levels are often derived from the decomposition of organic matter in soils. Although the nitrate source is unknown, such occurrences may be attributed to septic systems or other sources. After combining the contaminant risk for nitrates and nitrites with the natural susceptibility of the well, the overall vulnerability of the well to nitrate and nitrite contamination is **Very High**.

Volatile Organic Chemicals

The contaminant risk for volatile organic chemicals is **Very High**. The risk is primarily attributed to the presence of landfills, petroleum product bulk

station/terminals, and an airport located in Zone A. Numerous other potential contaminant sources are also found within the protection area (see Table 4 – Appendix B).

All recent sampling data for VOCs were below detection limits (See Chart 7 – Contaminant Risks for Volatile Organic Chemicals in Appendix D).

After combining the contaminant risk for volatile organic chemicals with the natural susceptibility of the well, the overall vulnerability of the well to contamination is **Very High**.

Heavy Metals, Cyanide and Other Inorganic Chemicals

The contaminant risk for heavy metals, cyanide and other inorganic chemicals is **Very High**. The risk is primarily attributed to the presence of a landfill located in Zone A. Numerous other potential contaminant sources are also found within the protection area (see Table 5 – Appendix B).

Based on review of recent sampling records for this public water system, moderate levels of copper and lead have been detected in recent sampling history, but have not exceeded the respective MCLs of 1.3 mg/L and 0.015 mg/L (see Chart 9 – Contaminant Risks for Heavy Metals, Cyanide, and Other Inorganic Chemicals in Appendix D).

The reported concentrations of copper and lead in recent sampling events are not likely to be representative of source water conditions. These analytes are likely attributed to either the water treatment process or water distribution network; therefore, no risk points were assigned based on the presence of these analytes.

After combining the contaminant risk for heavy metals, cyanide and other inorganic chemicals with the natural susceptibility of the well, the overall vulnerability of the well to contamination is **High**.

Synthetic Organic Chemicals

The contaminant risk for synthetic organic chemicals is **Very High**. The risk is primarily attributed to the presence of a landfill located in Zone A. Numerous other potential contaminant sources are also found within the protection area (see Table 6 – Appendix B).

No recent sampling data was available in ADEC records for LKSD Rocky Mountain School (See Chart 11 – Contaminant Risks for Synthetic Organic Chemicals in Appendix D).

After combining the contaminant risk for synthetic organic chemicals with the natural susceptibility of the well, the overall vulnerability of the well to contamination is **Very High**.

Other Organic Chemicals

The contaminant risk for other organic chemicals is **Very High**. The risk is primarily attributed to the presence of a landfill, petroleum product bulk station/terminals, pipelines, and electric power generation located in Zone A. Numerous other potential contaminant sources are also found within the protection area (see Table 7 – Appendix B).

No recent sampling data was available in ADEC records for LKSD Rocky Mountain School (See Chart 13 – Contaminant Risks for Other Organic Chemicals in Appendix D).

After combining the contaminant risk for other organic chemicals with the natural susceptibility of the well, the overall vulnerability of the well to contamination is **Very High**.

Using the Source Water Assessment

This assessment of contaminant risks can be used as a foundation for local voluntary protection efforts as well as a basis for the continuous efforts on the part of LKSD Rocky Mountain School and the community of Goodnews Bay to protect public health. It is anticipated that Source Water Assessments will be updated every five years to reflect any changes in the vulnerability and/or susceptibility of the drinking water source.

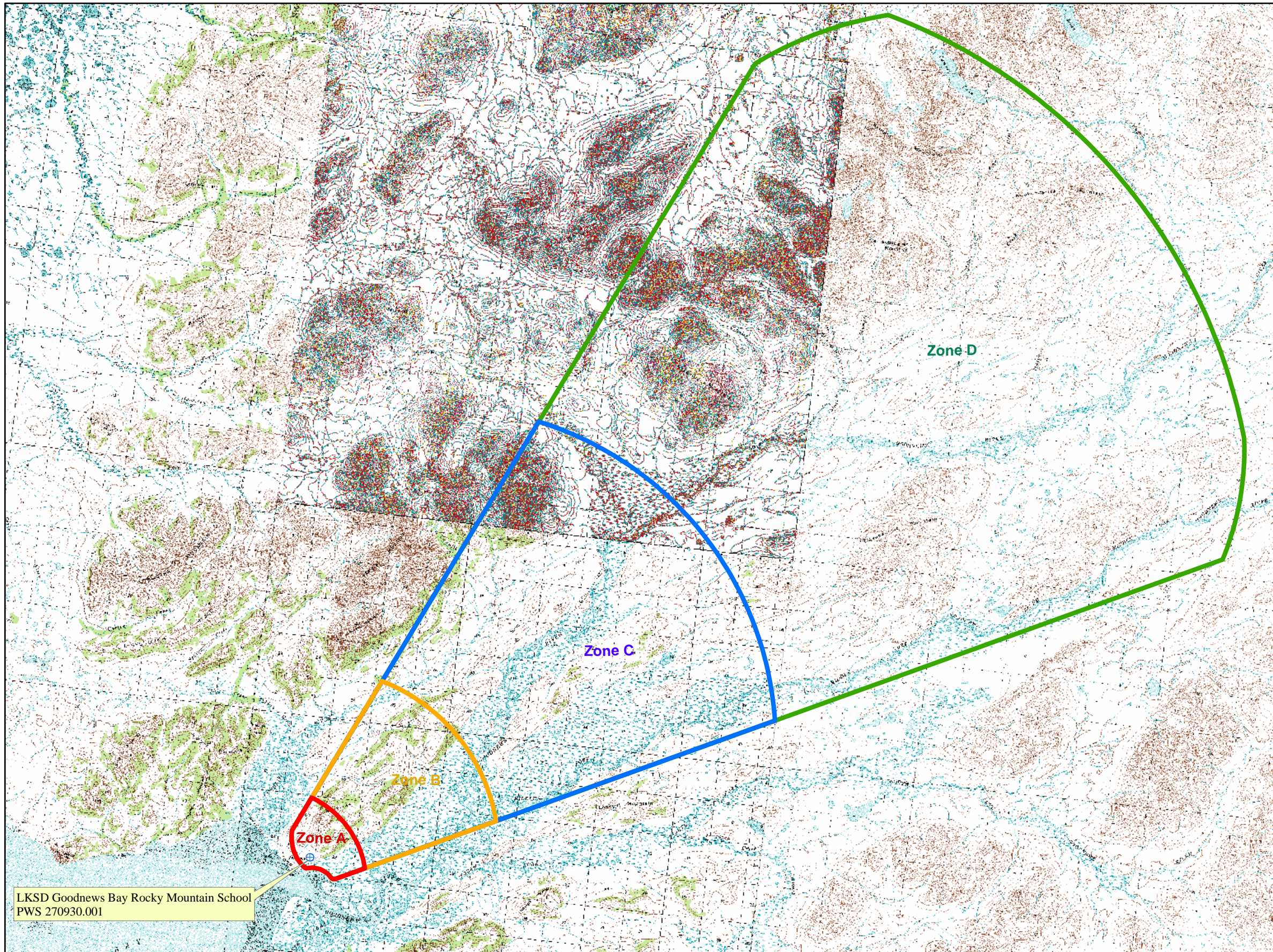
REFERENCES

- Alaska Department of Community and Economic Development (ADCED), 2003 [WWW document]. URL: http://www.dced.state.ak.us/cbd/commdb/CF_COMDB.htm
- Alaska Department of Environmental Conservation, Contaminated Sites Database, 2003 [WWW database], URL http://www.state.ak.us/dec/dspar/csites/cs_search.htm
- Alaska Department of Environmental Conservation, Leaking Underground Storage Tank Database, 2003 [WWW database], URL http://www.dec.state.ak.us/spar/stp/ust/search/fac_search.asp
- DOWL Engineers (DOWL), 1982, Upper Bristol Bay Region Community Planning Profiles.
- Freeze, R. A., and Cherry, J.A. 1979, Groundwater, Prentice-Hall, Englewood Cliffs, New Jersey
- United States Environmental Protection Agency (EPA), 2002 [WWW document]. URL <http://www.epa.gov/safewater/mcl.html>.

APPENDIX A

Drinking Water Protection Area Location Map (Map A)

Public Water Well System for PWS #270930.001 LKSD Goodnews Bay Rocky Mountain School

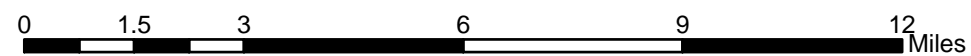
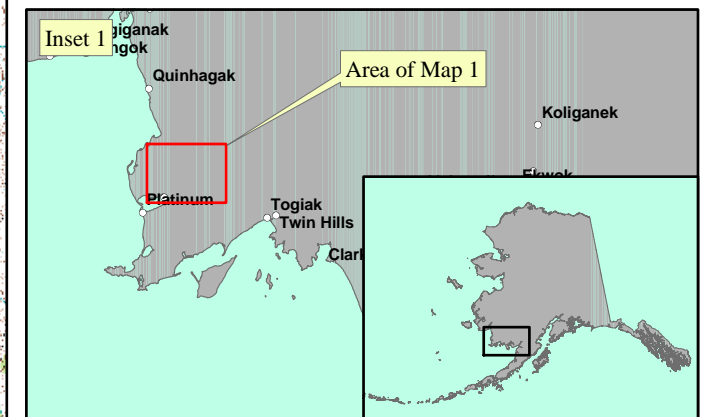


LEGEND

- ⊕ Public Water System Well
- Groundwater Protection Zones**
- ▭ Zone A Protection Area- Several Months Travel Time
- ▭ Zone B Protection Area- 2 Years Travel Time
- ▭ Zone C Protection Area- 5 Years Travel Time
- ▭ Zone D Protection Area- 10 Years Travel Time or Watershed Boundary
- Hydrography/Physical**
- ▭ Parcels
- ~ Stream
- ▭ Lake or Pond
- ~ Contours

Data Sources:
 - Contaminant Sources, Public Water System Wells, Contours
 - Alaska Department of Environmental Conservation (ADEC)
 - Critical Facilities, Federal Emergency Management Agency (FEMA)
 All other data:
 - United States Geological Survey (USGS)
 - Drinking Water Protection Areas based on "Alaska Drinking Water Protection Program - Guidance Manual for Class A Public Water Systems" published by ADEC

URS Corporation does not guarantee the accuracy or validity of the data provided.



LKSD Goodnews Bay Rocky Mountain School
 PWS 270930.001

APPENDIX B

Contaminant Source Inventory and Risk Ranking (Tables 1-7)

Table 1

**Contaminant Source Inventory for
LKSD Goodnews Bay Rocky Mountain School**

PWSID 270930.001

<i>Contaminant Source Type</i>	<i>Contaminant Source ID</i>	<i>CS ID tag</i>	<i>Zone</i>	<i>Map Number</i>	<i>Comments</i>
Laundromats without dry cleaning	C22	C22-01	A	C	Washeteria
Motor /motor vehicle repair shops	C31	C31-01	A	C	City Shop
Domestic wastewater collection systems (sewer lines or lift stations)	D01	D01-01	A	C	
Domestic wastewater treatment plant disposal ponds/lagoons	D02	D02-01	A	C	
Injection wells (Class V) Large-Capacity Septic System (Drainfield Disposal Method)	D10	D10-01	A	C	LKSD GNB Rocky Mountain School
Landfills (municipal; Class III)	D51	D51-01	A	C	
Tanks, heating oil, residential (above ground)	R08	R08-01	A	C	Assume 50 or less residential heating oil tanks in Zone A
Tanks, diesel (above ground)	T06	T06-01	A	C	School Backup
Tanks, diesel (above ground)	T06	T06-02	A	C	LKSD GNB Rocky Mountain School
Tanks, heating oil, nonresidential (aboveground)	T14	T14-01	A	C	AVEC
Tanks, heating oil, nonresidential (aboveground)	T14	T14-02	A	C	GNB Health Clinic
Tanks, heating oil, nonresidential (aboveground)	T14	T14-03	A	C	Corporation Store
Tanks, heating oil, nonresidential (aboveground)	T14	T14-04	A	C	Store
Tanks, heating oil, nonresidential (aboveground)	T14	T14-05	A	C	Store
Tanks, heating oil, nonresidential (aboveground)	T14	T14-06	A	C	Store
Tanks, heating oil, nonresidential (aboveground)	T14	T14-07	A	C	Teachers Quarters
Tanks, heating oil, nonresidential (aboveground)	T14	T14-08	A	C	GCI
Tanks, heating oil, nonresidential (aboveground)	T14	T14-09	A	C	Church
Tanks, heating oil, nonresidential (aboveground)	T14	T14-10	A	C	Community Hall
Tanks, heating oil, nonresidential (aboveground)	T14	T14-11	A	C	Fire Station
Tanks, heating oil, nonresidential (aboveground)	T14	T14-12	A	C	Hilary Memorial Library
Tanks, heating oil, nonresidential (aboveground)	T14	T14-13	A	C	Museum
Tanks, heating oil, nonresidential (aboveground)	T14	T14-14	A	C	National Guard Armory

<i>Contaminant Source Type</i>	<i>Contaminant Source ID</i>	<i>CS ID tag</i>	<i>Zone</i>	<i>Map Number</i>	<i>Comments</i>
Tanks, heating oil, nonresidential (aboveground)	T14	T14-15	A	C	City Office
Tanks, heating oil, nonresidential (aboveground)	T14	T14-16	A	C	Tribal Office
Tanks, heating oil, nonresidential (aboveground)	T14	T14-17	A	C	Police Station
Tanks, heating oil, nonresidential (aboveground)	T14	T14-18	A	C	Post Office
Tanks, heating oil, nonresidential (aboveground)	T14	T14-19	A	C	GCI
Tanks, heating oil, nonresidential (aboveground)	T14	T14-20	A	C	Rocky Mountain School
Tanks, heating oil, nonresidential (aboveground)	T14	T14-21	A	C	LKSD
Cemeteries	X01	X01-01	A	C	
Petroleum product bulk station/terminals	X11	X11-01	A	C	AVEC
Petroleum product bulk station/terminals	X11	X11-02	A	C	LKSD
Airports	X14	X14-01	A	C	
Highways and roads, dirt/gravel	X24	X24-01	A	C	Assume 1-20 roads located in Zone A
Pipelines (oil and gas)	X28	X28-01	A	C	Rocky Mountain School
Electric power generation (fossil fuels)	X36	X36-01	A	C	AVEC
Firehouses	X38	X38-01	A	C	Fire Station
Medical/veterinary facilities (doctor or dentist offices, hospitals, nursing homes)	X40	X40-01	A	C	GNB Health Clinic
Highways and roads, dirt/gravel	X24	X24-02	B	C	Assume 1-20 roads located in Zone B
Medical/veterinary facilities (doctor or dentist offices, hospitals, nursing homes)	X40	X40-02	B	C	GNB Clinic
Metals mining, placer (active or inactive?)	E04	E04-01	D	C	Bear Creek
Metals mining, placer (active or inactive?)	E04	E04-02	D	C	Cascade Creek
Metals mining, placer (active or inactive?)	E04	E04-03	D	C	Evans Pup
Metals mining, placer (active or inactive?)	E04	E04-04	D	C	Fox Gulch
Metals mining, placer (active or inactive?)	E04	E04-05	D	C	Malaria Creek
Metals mining, placer (active or inactive?)	E04	E04-06	D	C	Olympic Creek
Metals mining, placer (active or inactive?)	E04	E04-07	D	C	Slate Creek
Metals mining, placer (active or inactive?)	E04	E04-08	D	C	Wattamuse Creek

<i>Contaminant Source Type</i>	<i>Contaminant Source ID</i>	<i>CS ID tag</i>	<i>Zone</i>	<i>Map Number</i>	<i>Comments</i>
Quarries (sand, gravel, rock, other?)	E10	E10-01	D	C	Wattamuse-Granite Lode

*Contaminant Source Inventory and Risk Ranking for
LKSD Goodnews Bay Rocky Mountain School
Sources of Bacteria and Viruses*

PWSID 270930.001

Table 2

<i>Contaminant Source Type</i>	<i>Contaminant Source ID</i>	<i>CS ID tag</i>	<i>Zone</i>	<i>Risk Ranking for Analysis</i>	<i>Map Number</i>	<i>Comments</i>
Laundromats without dry cleaning	C22	C22-01	A	Low	C	Washeteria
Domestic wastewater collection systems (sewer line or lift stations)	D01	D01-01	A	Medium	C	
Domestic wastewater treatment plant disposal ponds/lagoons	D02	D02-01	A	High	C	
Injection wells (Class V) Large-Capacity Septic System (Drainfield Disposal Method)	D10	D10-01	A	High	C	LKSD GNB Rocky Mountain School
Landfills (municipal; Class III)	D51	D51-01	A	High	C	
Highways and roads, dirt/gravel	X24	X24-01	A	Low	C	Assume 1-20 roads located in Zone A
Medical/veterinary facilities (doctor or dentist offices, hospitals, nursing homes)	X40	X40-01	A	Medium	C	GNB Health Clinic
Highways and roads, dirt/gravel	X24	X24-02	B	Low	C	Assume 1-20 roads located in Zone B
Medical/veterinary facilities (doctor or dentist offices, hospitals, nursing homes)	X40	X40-02	B	Medium	C	GNB Clinic

Table 3

*Contaminant Source Inventory and Risk Ranking for
LKSD Goodnews Bay Rocky Mountain School
Sources of Nitrates/Nitrites*

PWSID 270930.001

<i>Contaminant Source Type</i>	<i>Contaminant Source ID</i>	<i>CS ID tag</i>	<i>Zone</i>	<i>Risk Ranking for Analysis</i>	<i>Map Number</i>	<i>Comments</i>
Laundromats without dry cleaning	C22	C22-01	A	Low	C	Washeteria
Domestic wastewater collection systems (sewer line or lift stations)	D01	D01-01	A	Medium	C	
Domestic wastewater treatment plant disposal ponds/lagoons	D02	D02-01	A	High	C	
Injection wells (Class V) Large-Capacity Septic System (Drainfield Disposal Method)	D10	D10-01	A	High	C	LKSD GNB Rocky Mountain School
Landfills (municipal; Class III)	D51	D51-01	A	Very High	C	
Cemeteries	X01	X01-01	A	Medium	C	
Airports	X14	X14-01	A	Low	C	
Highways and roads, dirt/gravel	X24	X24-01	A	Low	C	Assume 1-20 roads located in Zone A
Medical/veterinary facilities (doctor or dentist offices, hospitals, nursing homes)	X40	X40-01	A	Low	C	GNB Health Clinic
Highways and roads, dirt/gravel	X24	X24-02	B	Low	C	Assume 1-20 roads located in Zone B
Medical/veterinary facilities (doctor or dentist offices, hospitals, nursing homes)	X40	X40-02	B	Low	C	GNB Clinic
Quarries (sand, gravel, rock, other?)	E10	E10-01	D	Low	C	Wattamuse-Granite Lode

Table 4

*Contaminant Source Inventory and Risk Ranking for
LKSD Goodnews Bay Rocky Mountain School
Sources of Volatile Organic Chemicals*

PWSID 270930.001

<i>Contaminant Source Type</i>	<i>Contaminant Source ID</i>	<i>CS ID tag</i>	<i>Zone</i>	<i>Risk Ranking for Analysis</i>	<i>Map Number</i>	<i>Comments</i>
Laundromats without dry cleaning	C22	C22-01	A	Low	C	Washeteria
Motor /motor vehicle repair shops	C31	C31-01	A	Medium	C	City Shop
Domestic wastewater collection systems (sewer line or lift stations)	D01	D01-01	A	Low	C	
Domestic wastewater treatment plant disposal ponds/lagoons	D02	D02-01	A	Low	C	
Injection wells (Class V) Large-Capacity Septic System (Drainfield Disposal Method)	D10	D10-01	A	Low	C	LKSD GNB Rocky Mountain School
Landfills (municipal; Class III)	D51	D51-01	A	High	C	
Tanks, heating oil, residential (above ground)	R08	R08-01	A	Medium	C	Assume 50 or less residential heating oil tanks in Zone A
Tanks, diesel (above ground)	T06	T06-01	A	Medium	C	School Backup
Tanks, diesel (above ground)	T06	T06-02	A	Medium	C	LKSD GNB Rocky Mountain School
Tanks, heating oil, nonresidential (aboveground)	T14	T14-01	A	Low	C	AVEC
Tanks, heating oil, nonresidential (aboveground)	T14	T14-02	A	Low	C	GNB Health Clinic
Tanks, heating oil, nonresidential (aboveground)	T14	T14-03	A	Low	C	Corporation Store
Tanks, heating oil, nonresidential (aboveground)	T14	T14-04	A	Low	C	Store
Tanks, heating oil, nonresidential (aboveground)	T14	T14-05	A	Low	C	Store
Tanks, heating oil, nonresidential (aboveground)	T14	T14-06	A	Low	C	Store
Tanks, heating oil, nonresidential (aboveground)	T14	T14-07	A	Low	C	Teachers Quarters
Tanks, heating oil, nonresidential (aboveground)	T14	T14-08	A	Low	C	GCI
Tanks, heating oil, nonresidential (aboveground)	T14	T14-09	A	Low	C	Church
Tanks, heating oil, nonresidential (aboveground)	T14	T14-10	A	Low	C	Community Hall
Tanks, heating oil, nonresidential (aboveground)	T14	T14-11	A	Low	C	Fire Station
Tanks, heating oil, nonresidential (aboveground)	T14	T14-12	A	Low	C	Hilary Memorial Library
Tanks, heating oil, nonresidential (aboveground)	T14	T14-13	A	Low	C	Museum

Table 4 (continued)

*Contaminant Source Inventory and Risk Ranking for
LKSD Goodnews Bay Rocky Mountain School
Sources of Volatile Organic Chemicals*

PWSID 270930.001

<i>Contaminant Source Type</i>	<i>Contaminant Source ID</i>	<i>CS ID tag</i>	<i>Zone</i>	<i>Risk Ranking for Analysis</i>	<i>Map Number</i>	<i>Comments</i>
Tanks, heating oil, nonresidential (aboveground)	T14	T14-14	A	Low	C	National Guard Armory
Tanks, heating oil, nonresidential (aboveground)	T14	T14-15	A	Low	C	City Office
Tanks, heating oil, nonresidential (aboveground)	T14	T14-16	A	Low	C	Tribal Office
Tanks, heating oil, nonresidential (aboveground)	T14	T14-17	A	Low	C	Police Station
Tanks, heating oil, nonresidential (aboveground)	T14	T14-18	A	Low	C	Post Office
Tanks, heating oil, nonresidential (aboveground)	T14	T14-19	A	Low	C	GCI
Tanks, heating oil, nonresidential (aboveground)	T14	T14-20	A	Low	C	Rocky Mountain School
Tanks, heating oil, nonresidential (aboveground)	T14	T14-21	A	Low	C	LKSD
Petroleum product bulk station/terminals	X11	X11-01	A	Very High	C	AVEC
Petroleum product bulk station/terminals	X11	X11-02	A	Very High	C	LKSD
Airports	X14	X14-01	A	High	C	
Highways and roads, dirt/gravel	X24	X24-01	A	Low	C	Assume 1-20 roads located in Zone A
Pipelines (oil and gas)	X28	X28-01	A	Medium	C	Rocky Mountain School
Electric power generation (fossil fuels)	X36	X36-01	A	Medium	C	AVEC
Firehouses	X38	X38-01	A	Low	C	Fire Station
Medical/veterinary facilities (doctor or dentist offices, hospitals, nursing homes)	X40	X40-01	A	Low	C	GNB Health Clinic
Highways and roads, dirt/gravel	X24	X24-02	B	Low	C	Assume 1-20 roads located in Zone B
Medical/veterinary facilities (doctor or dentist offices, hospitals, nursing homes)	X40	X40-02	B	Low	C	GNB Clinic
Quarries (sand, gravel, rock, other?)	E10	E10-01	D	Low	C	Wattamuse-Granite Lode

Table 5

*Contaminant Source Inventory and Risk Ranking for
LKSD Goodnews Bay Rocky Mountain School
Sources of Heavy Metals, Cyanide and Other Inorganic Chemicals*

<i>Contaminant Source Type</i>	<i>Contaminant Source ID</i>	<i>CS ID tag</i>	<i>Zone</i>	<i>Risk Ranking for Analysis</i>	<i>Map Number</i>	<i>Comments</i>
Motor /motor vehicle repair shops	C31	C31-01	A	Medium	C	City Shop
Domestic wastewater collection systems (sewer line or lift stations)	D01	D01-01	A	Low	C	
Domestic wastewater treatment plant disposal ponds/lagoons	D02	D02-01	A	Low	C	
Injection wells (Class V) Large-Capacity Septic System (Drainfield Disposal Method)	D10	D10-01	A	Low	C	LKSD GNB Rocky Mountain School
Landfills (municipal; Class III)	D51	D51-01	A	High	C	
Tanks, heating oil, nonresidential (aboveground)	T14	T14-01	A	Low	C	AVEC
Tanks, heating oil, nonresidential (aboveground)	T14	T14-02	A	Low	C	GNB Health Clinic
Tanks, heating oil, nonresidential (aboveground)	T14	T14-03	A	Low	C	Corporation Store
Tanks, heating oil, nonresidential (aboveground)	T14	T14-04	A	Low	C	Store
Tanks, heating oil, nonresidential (aboveground)	T14	T14-05	A	Low	C	Store
Tanks, heating oil, nonresidential (aboveground)	T14	T14-06	A	Low	C	Store
Tanks, heating oil, nonresidential (aboveground)	T14	T14-07	A	Low	C	Teachers Quarters
Tanks, heating oil, nonresidential (aboveground)	T14	T14-08	A	Low	C	GCI
Tanks, heating oil, nonresidential (aboveground)	T14	T14-09	A	Low	C	Church
Tanks, heating oil, nonresidential (aboveground)	T14	T14-10	A	Low	C	Community Hall
Tanks, heating oil, nonresidential (aboveground)	T14	T14-11	A	Low	C	Fire Station
Tanks, heating oil, nonresidential (aboveground)	T14	T14-12	A	Low	C	Hilary Memorial Library
Tanks, heating oil, nonresidential (aboveground)	T14	T14-13	A	Low	C	Museum
Tanks, heating oil, nonresidential (aboveground)	T14	T14-14	A	Low	C	National Guard Armory
Tanks, heating oil, nonresidential (aboveground)	T14	T14-15	A	Low	C	City Office
Tanks, heating oil, nonresidential (aboveground)	T14	T14-16	A	Low	C	Tribal Office
Tanks, heating oil, nonresidential (aboveground)	T14	T14-17	A	Low	C	Police Station

Table 5 (continued)

*Contaminant Source Inventory and Risk Ranking for
LKSD Goodnews Bay Rocky Mountain School
Sources of Heavy Metals, Cyanide and Other Inorganic Chemicals*

<i>Contaminant Source Type</i>	<i>Contaminant Source ID</i>	<i>CS ID tag</i>	<i>Zone</i>	<i>Risk Ranking for Analysis</i>	<i>Map Number</i>	<i>Comments</i>
Tanks, heating oil, nonresidential (aboveground)	T14	T14-18	A	Low	C	Post Office
Tanks, heating oil, nonresidential (aboveground)	T14	T14-19	A	Low	C	GCI
Tanks, heating oil, nonresidential (aboveground)	T14	T14-20	A	Low	C	Rocky Mountain School
Tanks, heating oil, nonresidential (aboveground)	T14	T14-21	A	Low	C	LKSD
Cemeteries	X01	X01-01	A	Low	C	
Petroleum product bulk station/terminals	X11	X11-01	A	Low	C	AVEC
Petroleum product bulk station/terminals	X11	X11-02	A	Low	C	LKSD
Airports	X14	X14-01	A	Low	C	
Highways and roads, dirt/gravel	X24	X24-01	A	Low	C	Assume 1-20 roads located in Zone A
Pipelines (oil and gas)	X28	X28-01	A	Low	C	Rocky Mountain School
Electric power generation (fossil fuels)	X36	X36-01	A	Medium	C	AVEC
Firehouses	X38	X38-01	A	Low	C	Fire Station
Medical/veterinary facilities (doctor or dentist offices, hospitals, nursing homes)	X40	X40-01	A	Low	C	GNB Health Clinic
Highways and roads, dirt/gravel	X24	X24-02	B	Low	C	Assume 1-20 roads located in Zone B
Medical/veterinary facilities (doctor or dentist offices, hospitals, nursing homes)	X40	X40-02	B	Low	C	GNB Clinic
Metals mining, placer (active or inactive?)	E04	E04-01	D	Low	C	Bear Creek
Metals mining, placer (active or inactive?)	E04	E04-02	D	Low	C	Cascade Creek
Metals mining, placer (active or inactive?)	E04	E04-03	D	Low	C	Evans Pup
Metals mining, placer (active or inactive?)	E04	E04-04	D	Low	C	Fox Gulch
Metals mining, placer (active or inactive?)	E04	E04-05	D	Low	C	Malaria Creek
Metals mining, placer (active or inactive?)	E04	E04-06	D	Low	C	Olympic Creek
Metals mining, placer (active or inactive?)	E04	E04-07	D	Low	C	Slate Creek
Metals mining, placer (active or inactive?)	E04	E04-08	D	Low	C	Wattamuse Creek

Table 5 (continued)

*Contaminant Source Inventory and Risk Ranking for
LKSD Goodnews Bay Rocky Mountain School
Sources of Heavy Metals, Cyanide and Other Inorganic Chemicals*

PWSID 270930.001

<i>Contaminant Source Type</i>	<i>Contaminant Source ID</i>	<i>CS ID tag</i>	<i>Zone</i>	<i>Risk Ranking for Analysis</i>	<i>Map Number</i>	<i>Comments</i>
--------------------------------	------------------------------	------------------	-------------	----------------------------------	-------------------	-----------------

Table 6

*Contaminant Source Inventory and Risk Ranking for
LKSD Goodnews Bay Rocky Mountain School
Sources of Synthetic Organic Chemicals*

PWSID 270930.001

<i>Contaminant Source Type</i>	<i>Contaminant Source ID</i>	<i>CS ID tag</i>	<i>Zone</i>	<i>Risk Ranking for Analysis</i>	<i>Map Number</i>	<i>Comments</i>
Domestic wastewater collection systems (sewer line or lift stations)	D01	D01-01	A	Low	C	
Domestic wastewater treatment plant disposal ponds/lagoons	D02	D02-01	A	Low	C	
Injection wells (Class V) Large-Capacity Septic System (Drainfield Disposal Method)	D10	D10-01	A	Low	C	LKSD GNB Rocky Mountain School
Landfills (municipal; Class III)	D51	D51-01	A	Very High	C	
Cemeteries	X01	X01-01	A	Medium	C	
Petroleum product bulk station/terminals	X11	X11-01	A	Low	C	AVEC
Petroleum product bulk station/terminals	X11	X11-02	A	Low	C	LKSD
Airports	X14	X14-01	A	Medium	C	
Medical/veterinary facilities (doctor or dentist offices, hospitals, nursing homes)	X40	X40-01	A	Low	C	GNB Health Clinic
Medical/veterinary facilities (doctor or dentist offices, hospitals, nursing homes)	X40	X40-02	B	Low	C	GNB Clinic

Table 7

*Contaminant Source Inventory and Risk Ranking for
LKSD Goodnews Bay Rocky Mountain School
Sources of Other Organic Chemicals*

PWSID 270930.001

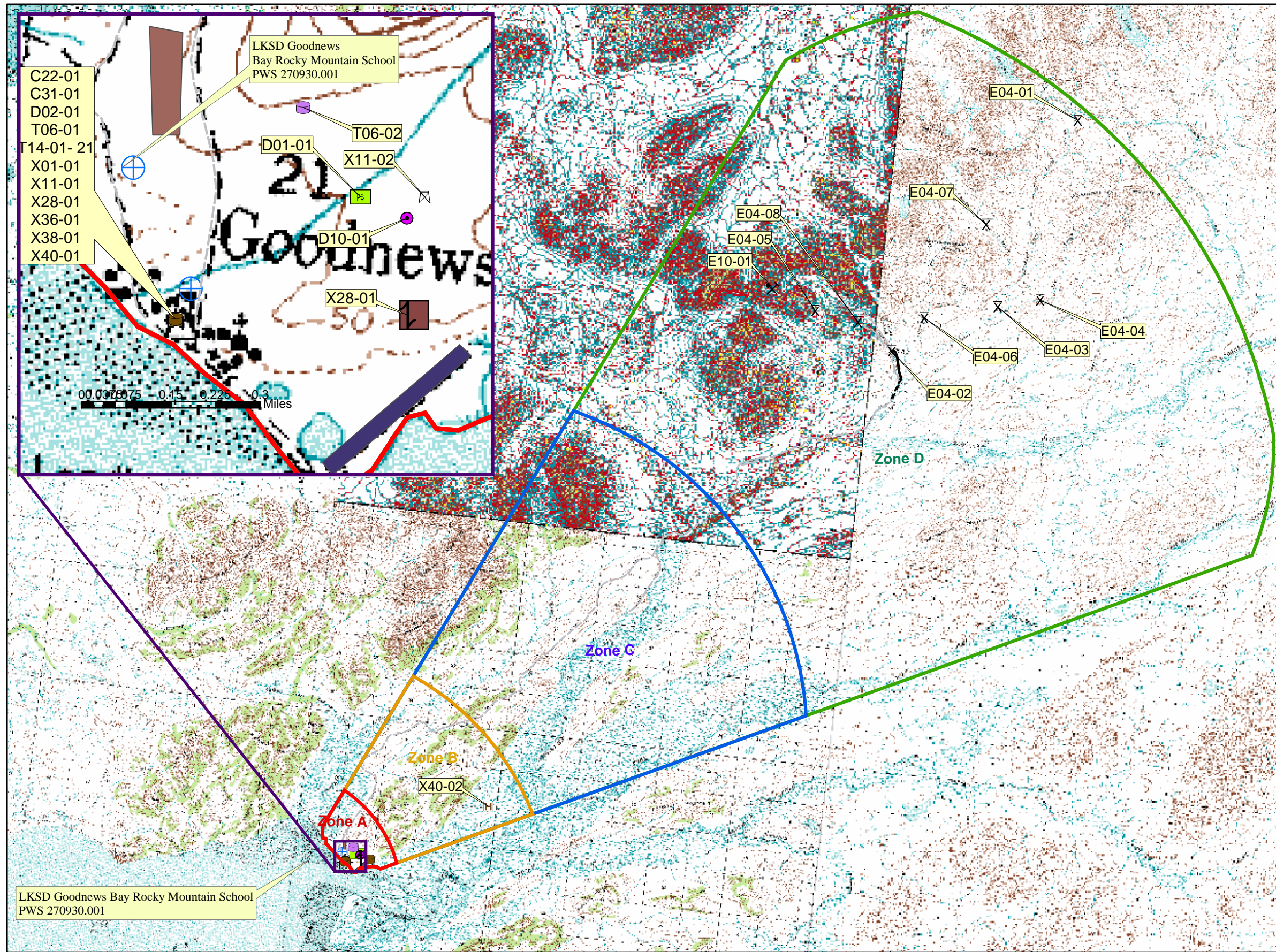
<i>Contaminant Source Type</i>	<i>Contaminant Source ID</i>	<i>CS ID tag</i>	<i>Zone</i>	<i>Risk Ranking for Analysis</i>	<i>Map Number</i>	<i>Comments</i>
Motor /motor vehicle repair shops	C31	C31-01	A	Medium	C	City Shop
Domestic wastewater collection systems (sewer line or lift stations)	D01	D01-01	A	Low	C	
Domestic wastewater treatment plant disposal ponds/lagoons	D02	D02-01	A	Low	C	
Injection wells (Class V) Large-Capacity Septic System (Drainfield Disposal Method)	D10	D10-01	A	Low	C	LKSD GNB Rocky Mountain School
Landfills (municipal; Class III)	D51	D51-01	A	Very High	C	
Petroleum product bulk station/terminals	X11	X11-01	A	High	C	AVEC
Petroleum product bulk station/terminals	X11	X11-02	A	High	C	LKSD
Airports	X14	X14-01	A	Medium	C	
Highways and roads, dirt/gravel	X24	X24-01	A	Low	C	Assume 1-20 roads located in Zone A
Pipelines (oil and gas)	X28	X28-01	A	High	C	Rocky Mountain School
Electric power generation (fossil fuels)	X36	X36-01	A	High	C	AVEC
Highways and roads, dirt/gravel	X24	X24-02	B	Low	C	Assume 1-20 roads located in Zone B
Quarries (sand, gravel, rock, other?)	E10	E10-01	D	Low	C	Wattamuse-Granite Lode

APPENDIX C

Drinking Water Protection Area and Potential and Existing Contaminant Sources (Map C)

Public Water Well System for PWS #270930.001 LKSD Goodnews Bay Rocky Mountain School

Showing Potential and Existing Sources of Contamination



LEGEND

Public Water System Well

Groundwater Protection Zones

- Zone A Protection Area- Several Months Travel Time
- Zone B Protection Area- 2 Years Travel Time
- Zone C Protection Area- 5 Years Travel Time
- Zone D Protection Area- 10 Years Travel Time or Watershed Boundary

Hydrography/Physical

- Parcels
- Stream
- Lake or Pond
- Contours

Transportation

- Primary Route (Class 1)
- Secondary Route (Class 2)
- Road (Class 3)
- Road (Class 4)
- Road (Class 5, Four-wheel drive)
- Road Ferry Crossing

Existing or Potential Contaminant Sources

- Laundromats without dry cleaning service (C22)
- Motor/motor vehicle repair shop (C31)
- Domestic Wastewater collection systems (sewer lines or lift stations) (D01)
- Domestic wastewater treatment plant disposal ponds/lagoons (D02)
- Injection wells (Class V) Large-Capacity Septic System (Drainfield Disposal Method) (D10)
- Placer Mine (E04)
- Other mines or quarries (E10)
- Tanks, diesel (aboveground) (T06)
- Tanks, heating oil, non-residential (aboveground) (T14)
- Cemetery (X01)
- Petroleum product bulk station/terminal (X11)
- Pipeline (X28)
- Electric power generation (fossil fuels)
- Fire Station (X38)
- Medical/veterinary facilities (X40)
- Landfill, Municipal, Class III (D51)
- Airport or Landing Strip (X14)

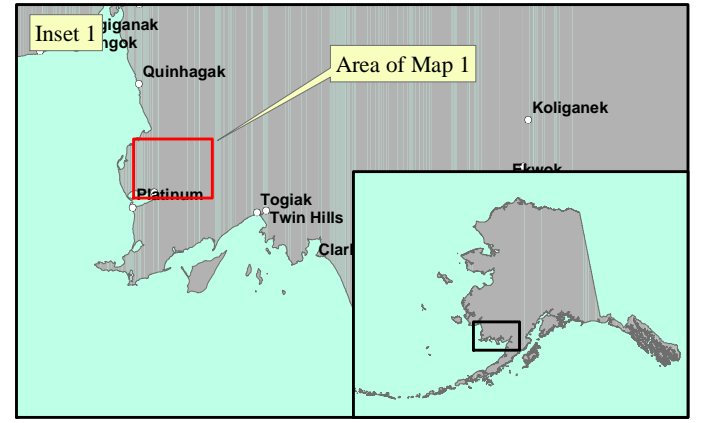
Data Sources:

- Contaminant Sources, Public Water System Wells, Contours Alaska Department of Environmental Conservation (ADEC)
- Critical Facilities, Federal Emergency Management Agency (FEMA)

All other data:

- United States Geological Survey (USGS)
- Drinking Water Protection Areas based on "Alaska Drinking Water Protection Program - Guidance Manual for Class A Public Water Systems" published by ADEC

URS Corporation does not guarantee the accuracy or validity of the data provided.



LKSD Goodnews Bay Rocky Mountain School
PWS 270930.001

APPENDIX D

Vulnerability Analysis for Public Drinking Water Source (Charts 1-14)

Chart 1. Susceptibility of the wellhead - LKSD Goodnews Bay Rocky Mountain School (PWS No. 270930.001)

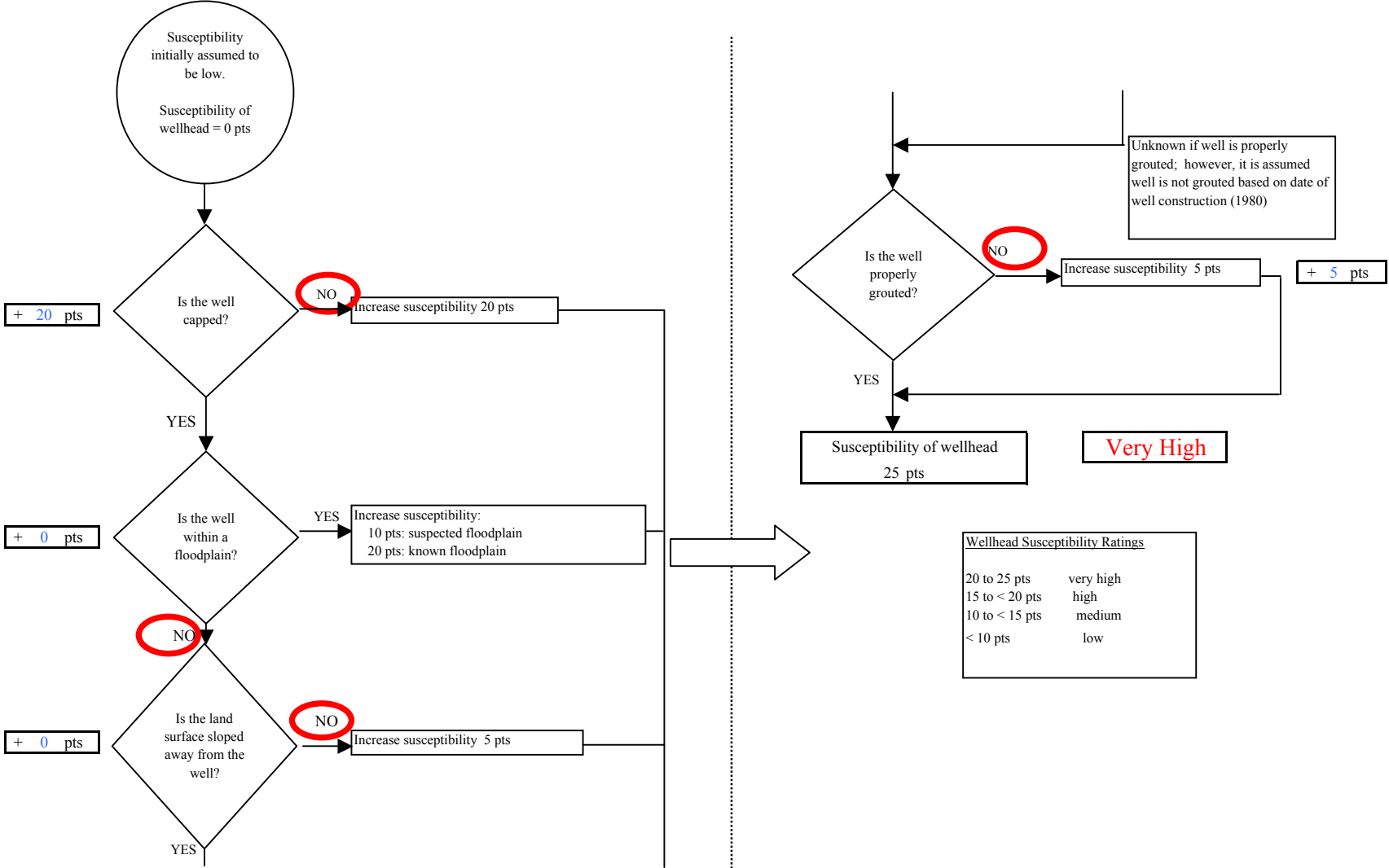


Chart 2. Susceptibility of the aquifer LKSD Goodnews Bay Rocky Mountain School (PWS No. 270930.001)

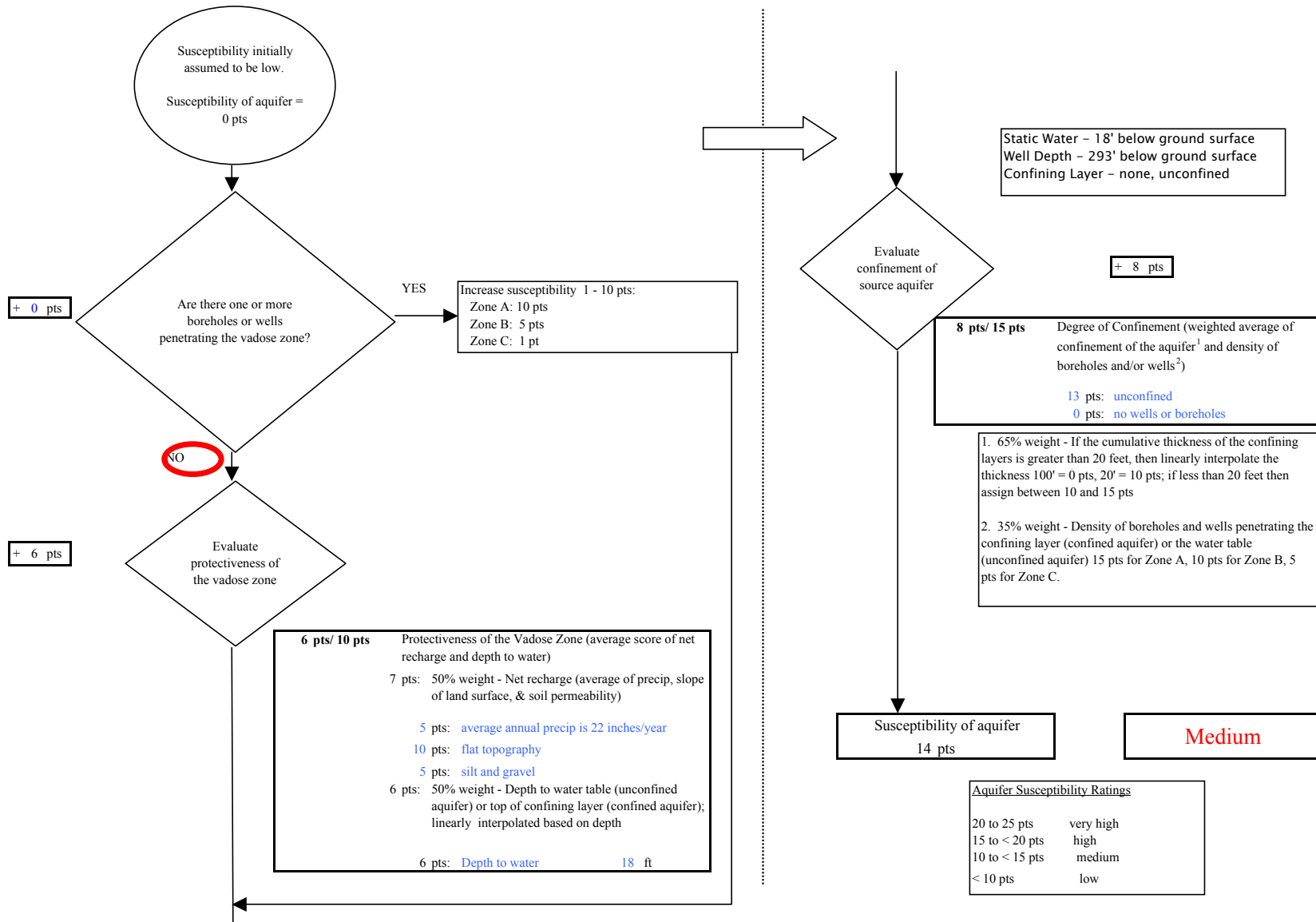


Chart 3. Contaminant risks for LKSD Goodnews Bay Rocky Mountain School (PWS No. 270930.001) - Bacteria & Viruses

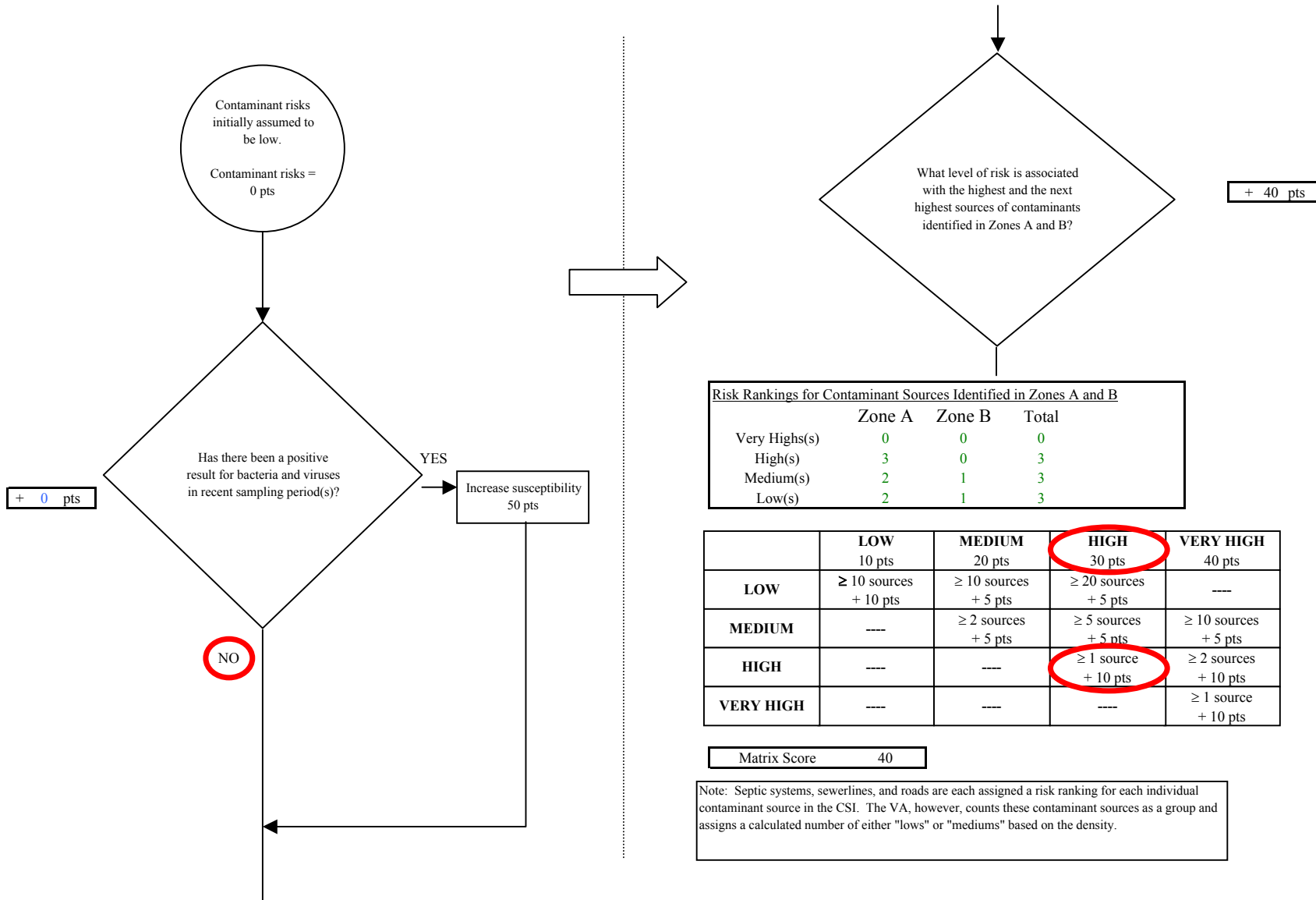


Chart 3. Contaminant risks for LKSD Goodnews Bay Rocky Mountain School (PWS No. 270930.001) - Bacteria & Viruses

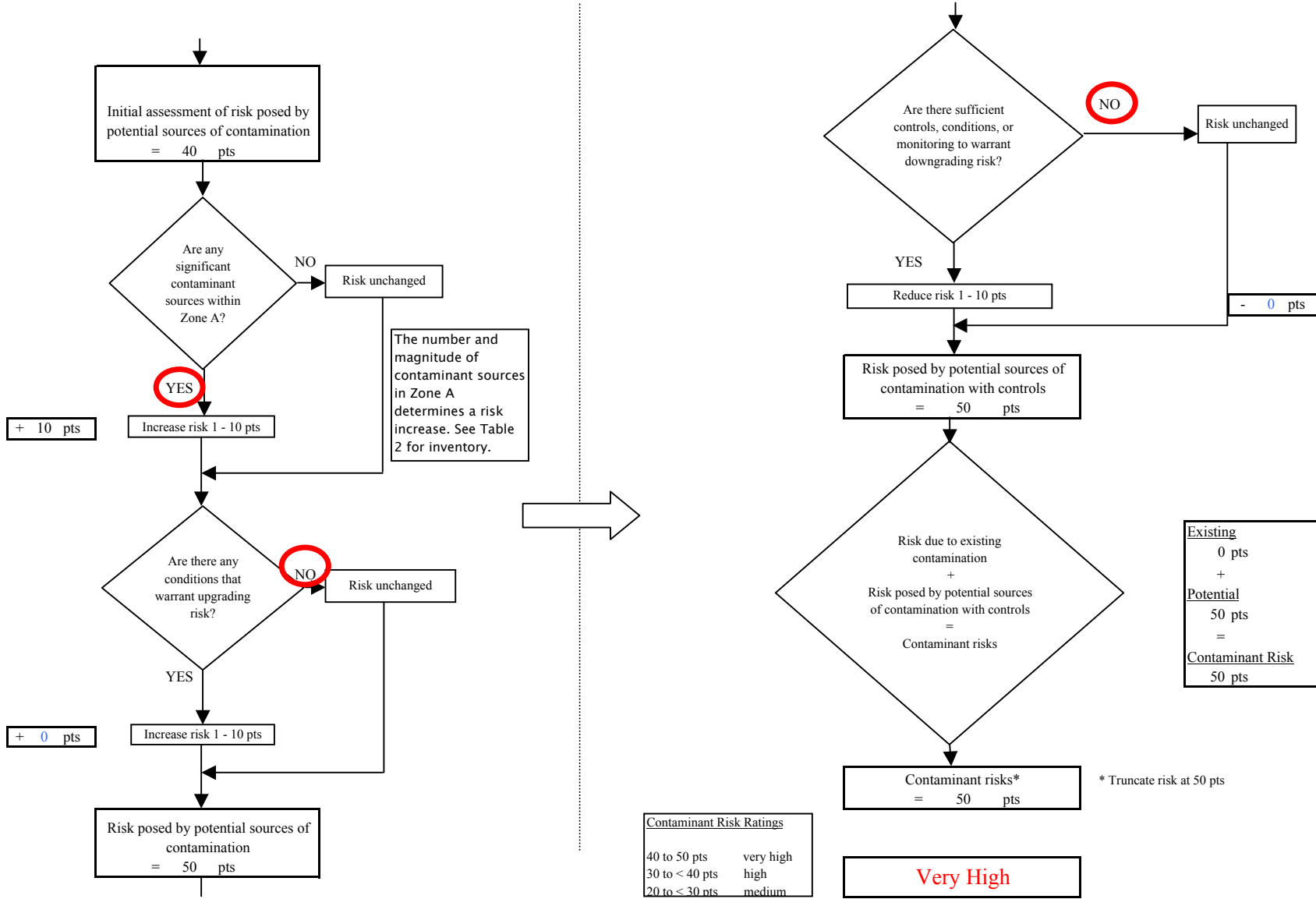


Chart 4. Vulnerability analysis for LKSD Goodnews Bay Rocky Mountain School (PWS No. 270930.001) - Bacteria & Viruses

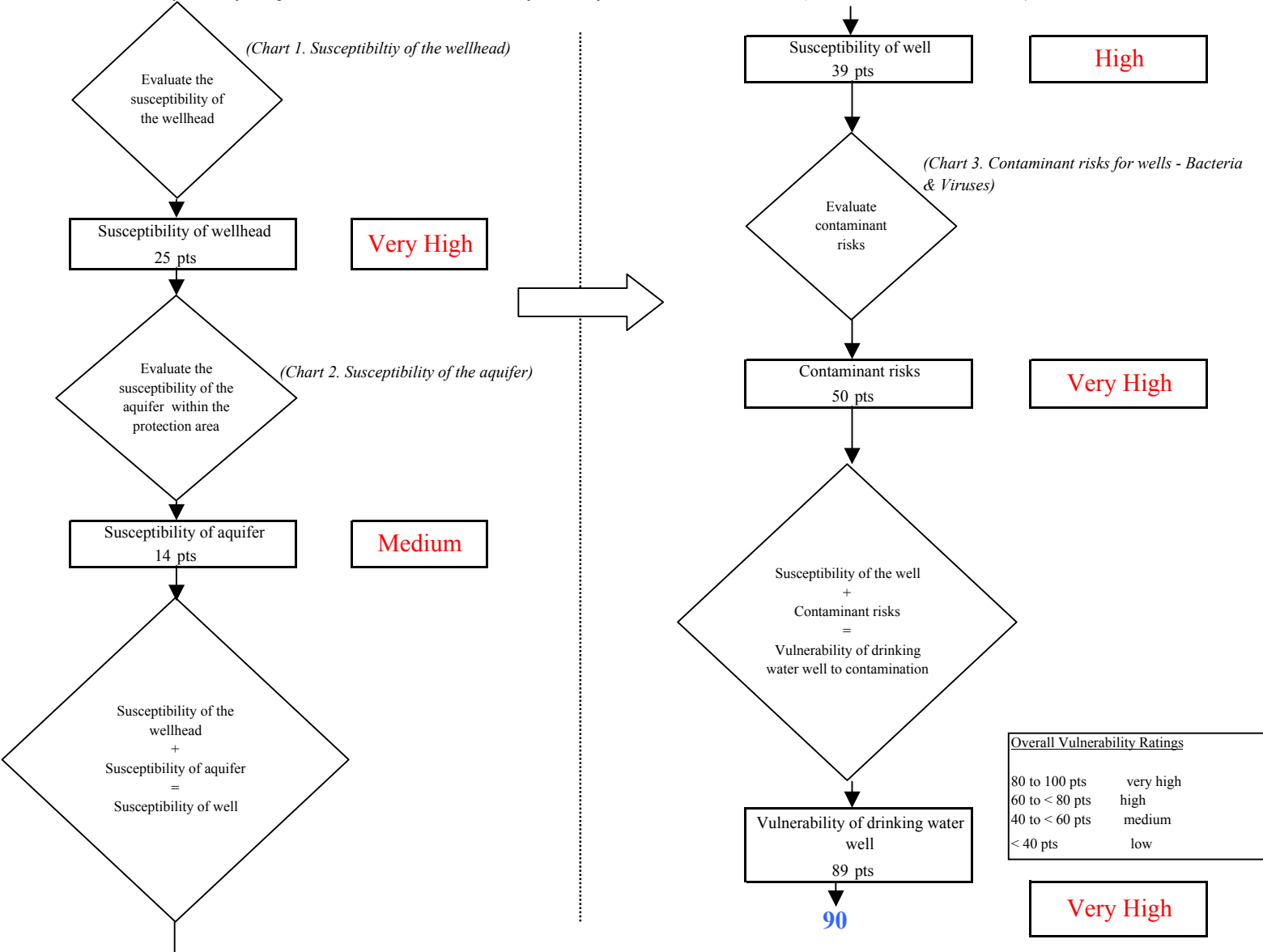


Chart 5. Contaminant risks for LKSD Goodnews Bay Rocky Mountain School (PWS No. 270930.001) - Nitrates and Nitrites

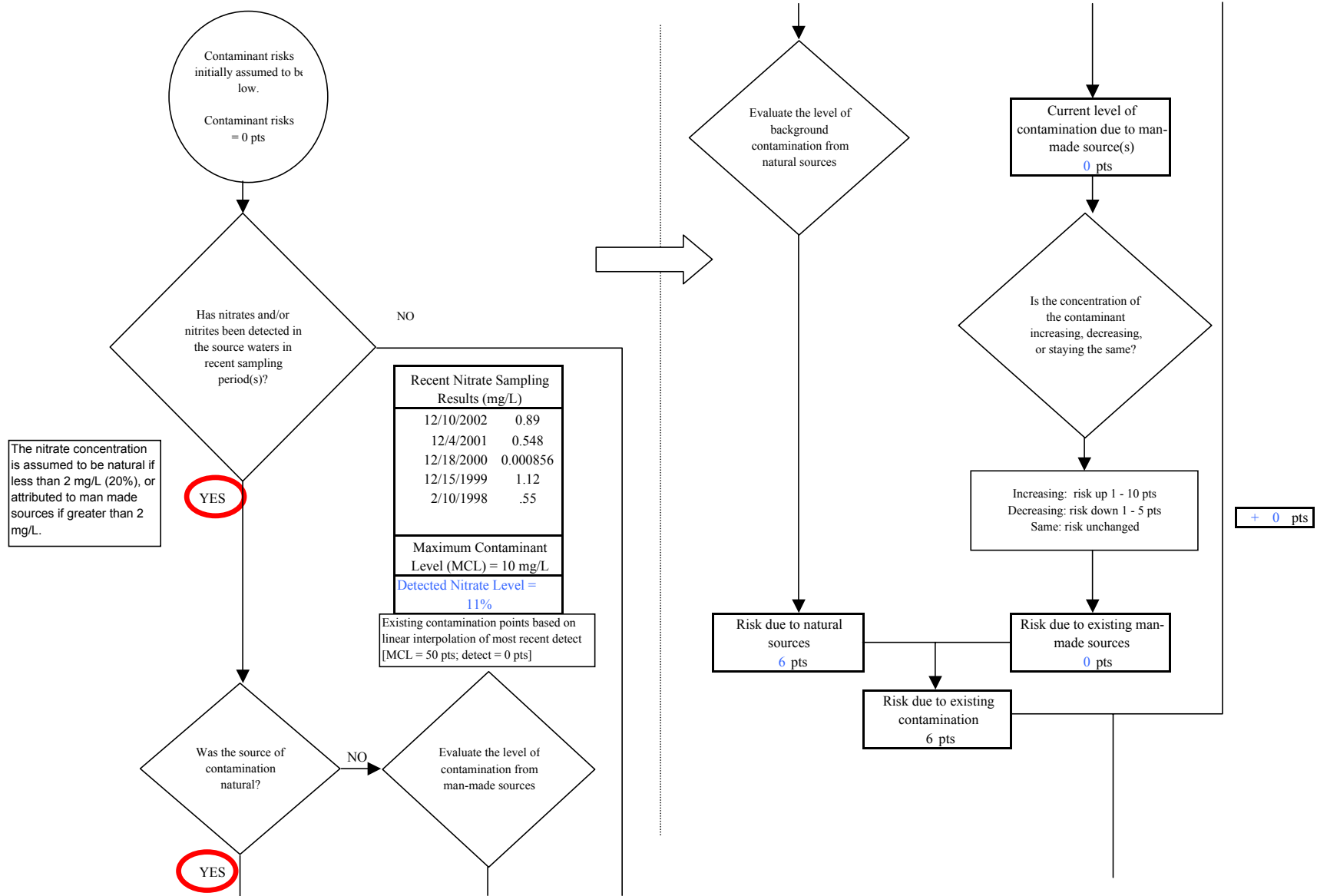
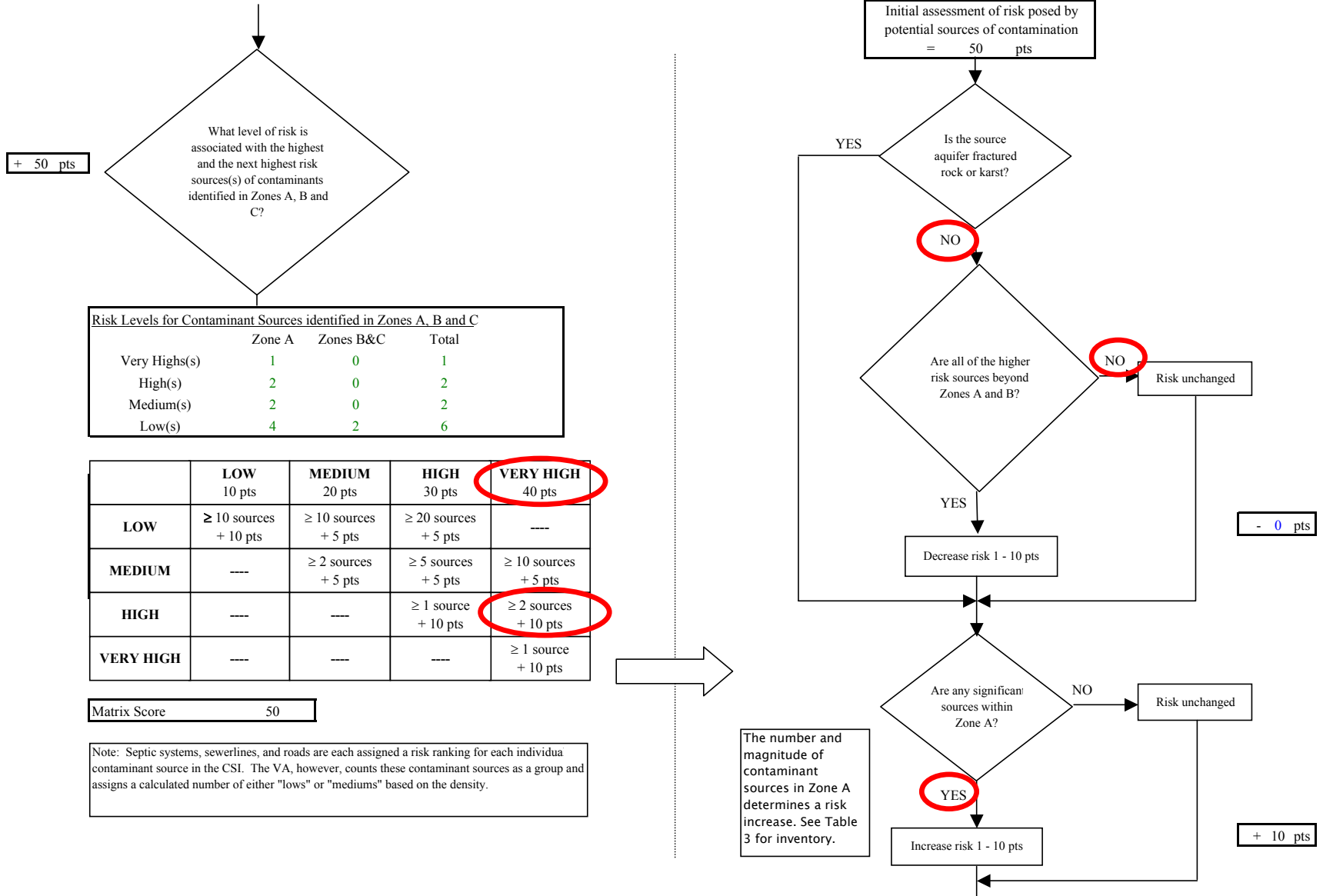


Chart 5. Contaminant risks for LKSD Goodnews Bay Rocky Mountain School (PWS No. 270930.001) - Nitrates and Nitrites



What level of risk is associated with the highest and the next highest risk sources(s) of contaminants identified in Zones A, B and C?

+ 50 pts

Risk Levels for Contaminant Sources identified in Zones A, B and C			
	Zone A	Zones B&C	Total
Very High(s)	1	0	1
High(s)	2	0	2
Medium(s)	2	0	2
Low(s)	4	2	6

	LOW 10 pts	MEDIUM 20 pts	HIGH 30 pts	VERY HIGH 40 pts
LOW	≥ 10 sources + 10 pts	≥ 10 sources + 5 pts	≥ 20 sources + 5 pts	---
MEDIUM	---	≥ 2 sources + 5 pts	≥ 5 sources + 5 pts	≥ 10 sources + 5 pts
HIGH	---	---	≥ 1 source + 10 pts	≥ 2 sources + 10 pts
VERY HIGH	---	---	---	≥ 1 source + 10 pts

Matrix Score 50

Note: Septic systems, sewerlines, and roads are each assigned a risk ranking for each individual contaminant source in the CSI. The VA, however, counts these contaminant sources as a group and assigns a calculated number of either "lows" or "mediums" based on the density.

Chart 5. Contaminant risks for LKSD Goodnews Bay Rocky Mountain School (PWS No. 270930.001) - Nitrates and Nitrites

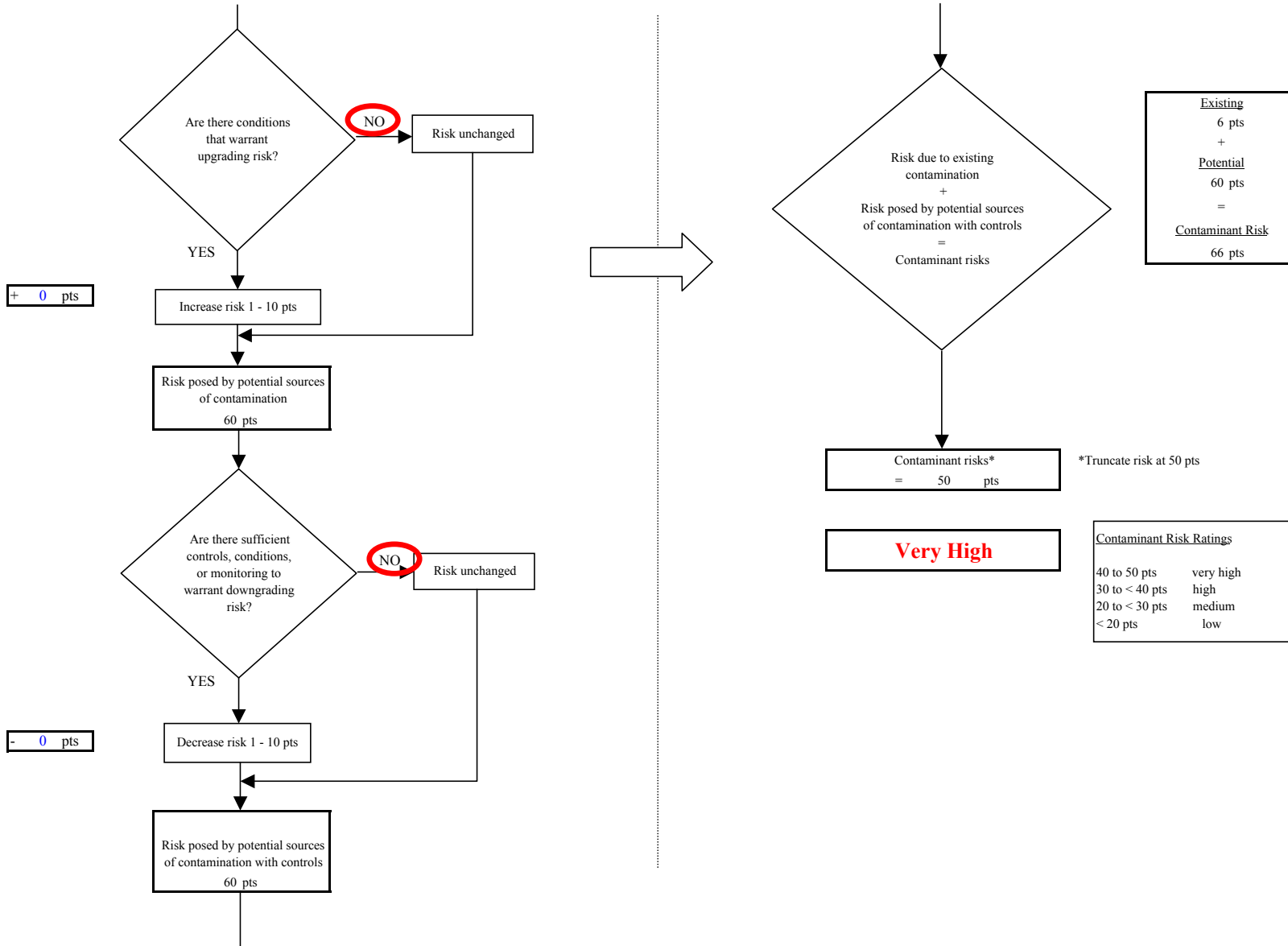


Chart 6. Vulnerability analysis for LKSD Goodnews Bay Rocky Mountain School (PWS No. 270930.001) - Nitrates and Nitrites

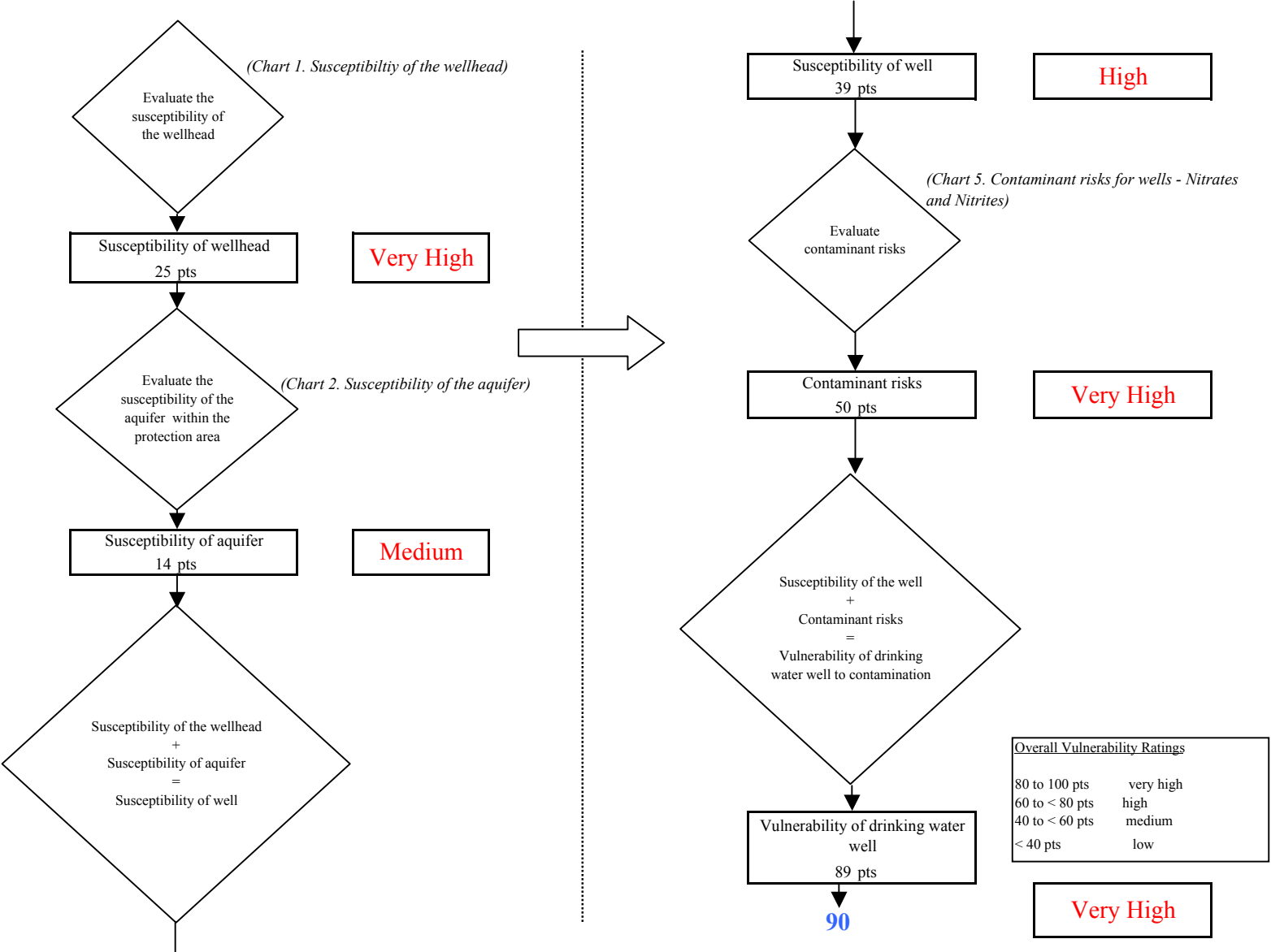


Chart 7. Contaminant risks for LKSD Goodnews Bay Rocky Mountain School (PWS No. 270930.001) - Volatile Organic Chemicals

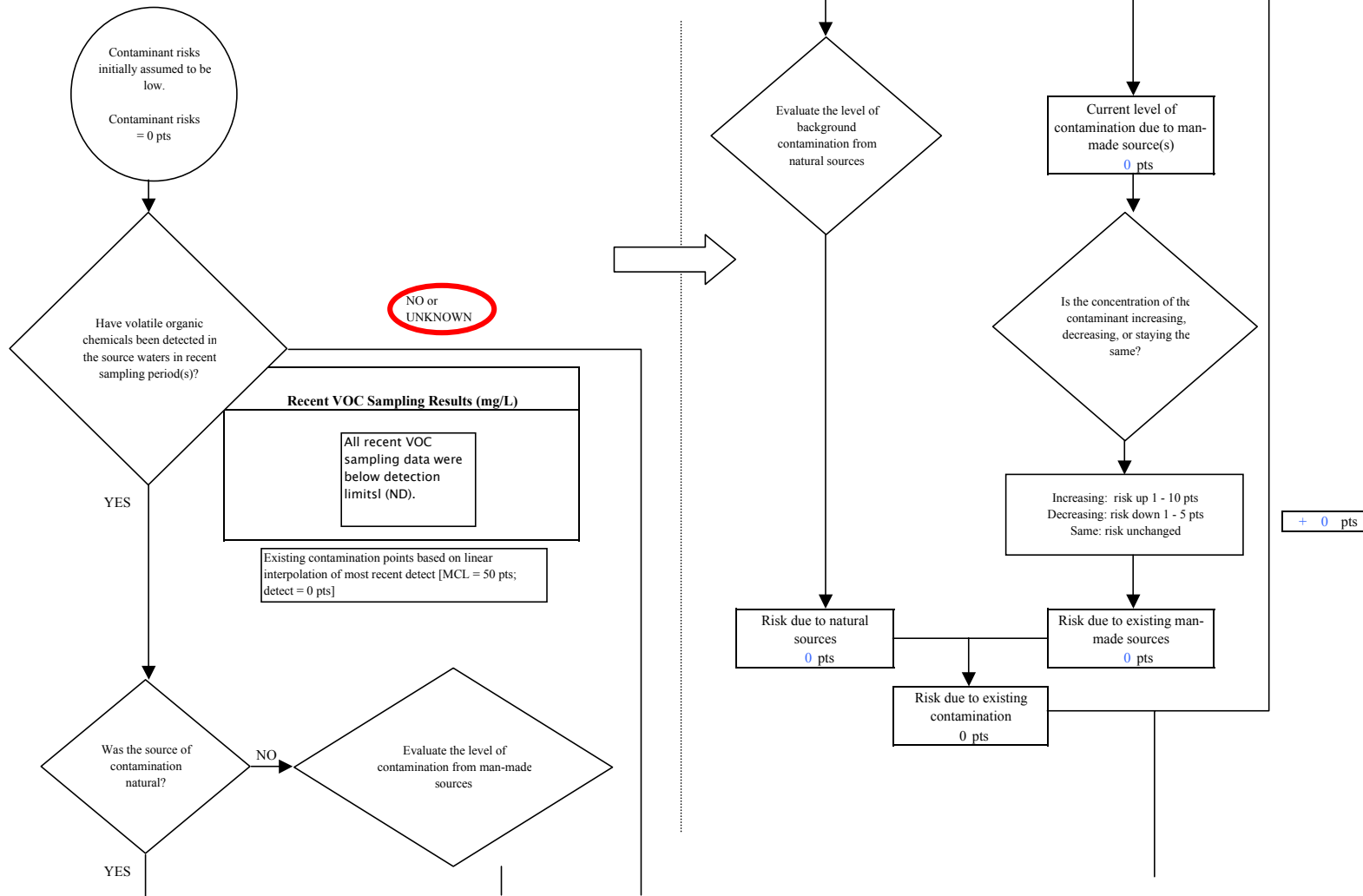
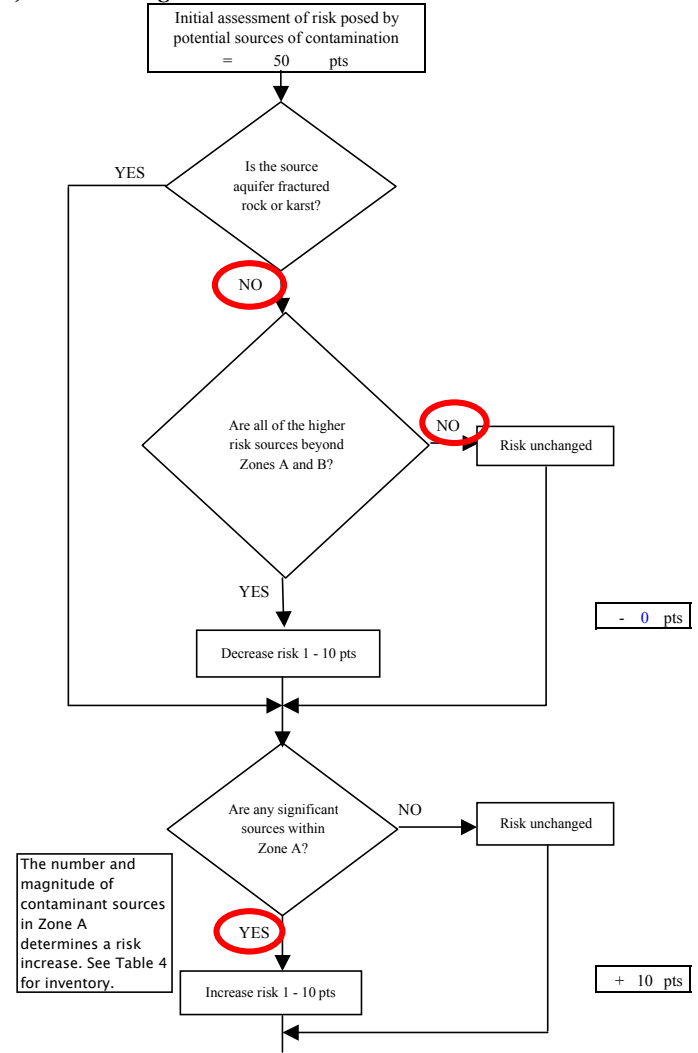
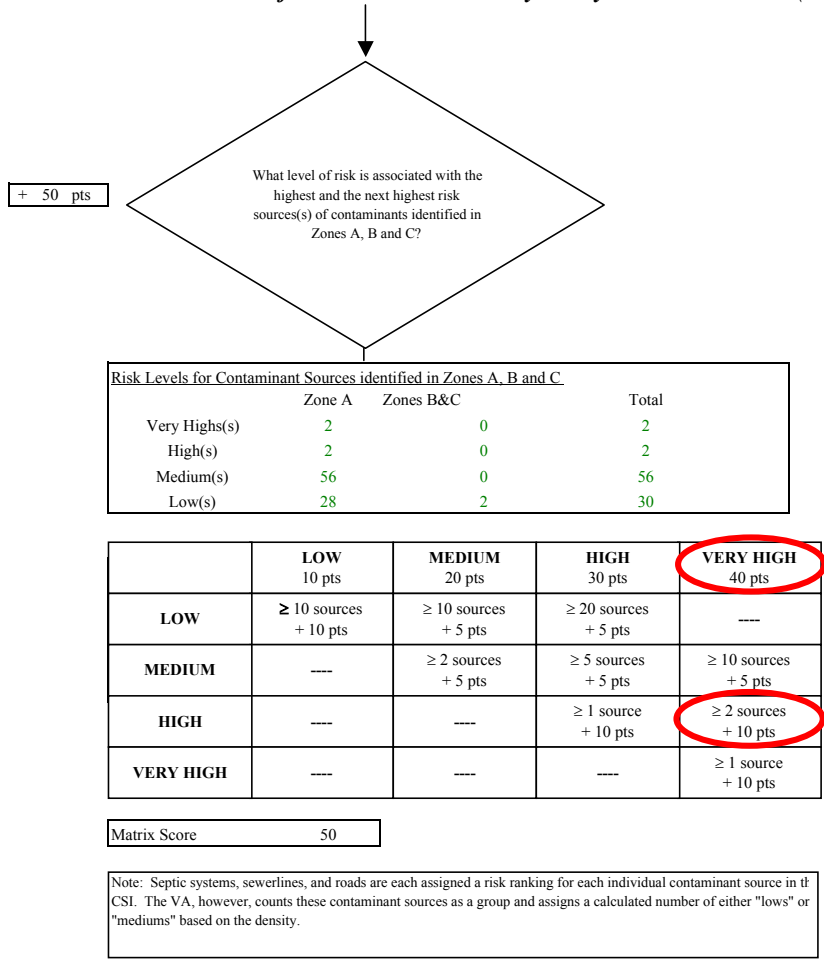


Chart 7. Contaminant risks for LKSD Goodnews Bay Rocky Mountain School (PWS No. 270930.001) - Volatile Organic Chemicals



The number and magnitude of contaminant sources in Zone A determines a risk increase. See Table 4 for inventory.

Chart 7. Contaminant risks for LKSD Goodnews Bay Rocky Mountain School (PWS No. 270930.001) - Volatile Organic Chemicals

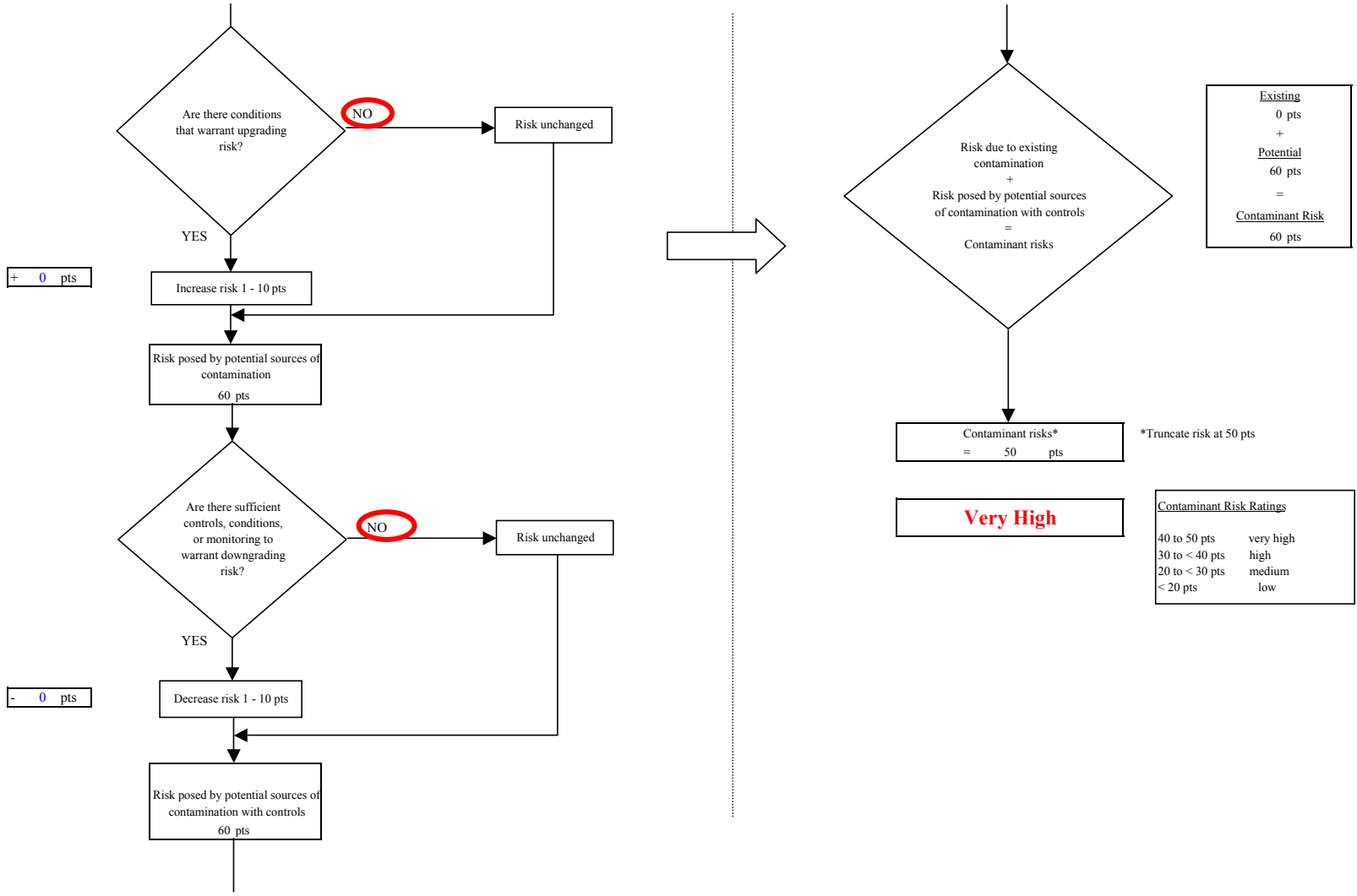


Chart 8. Vulnerability analysis for LKSD Goodnews Bay Rocky Mountain School (PWS No. 270930.001) - Volatile Organic Chemicals

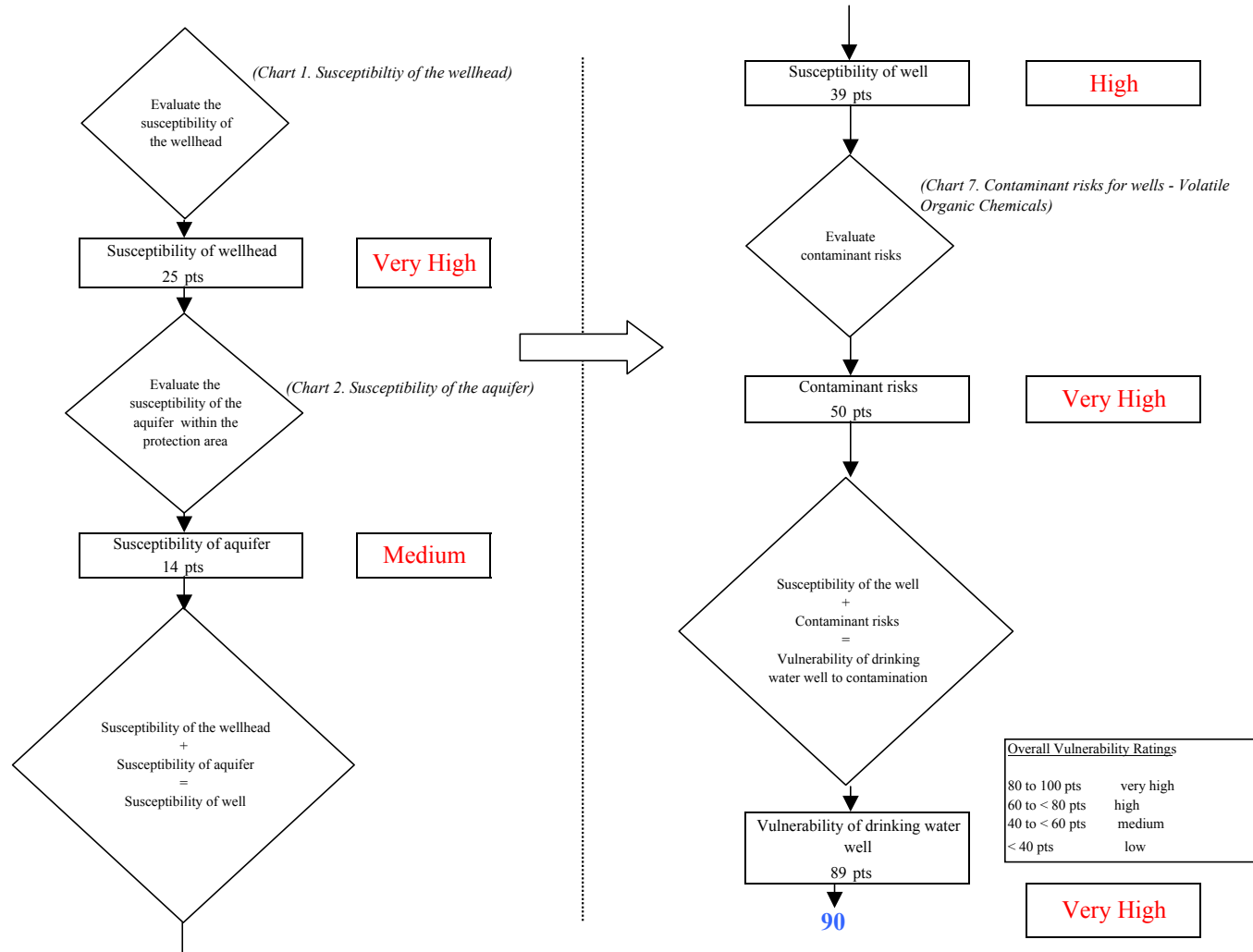


Chart 9. Contaminant risks for LKSD Goodnews Bay Rocky Mountain School (PWS No. 270930.001) - Heavy Metals, Cyanide and Other Inorganic Chemicals

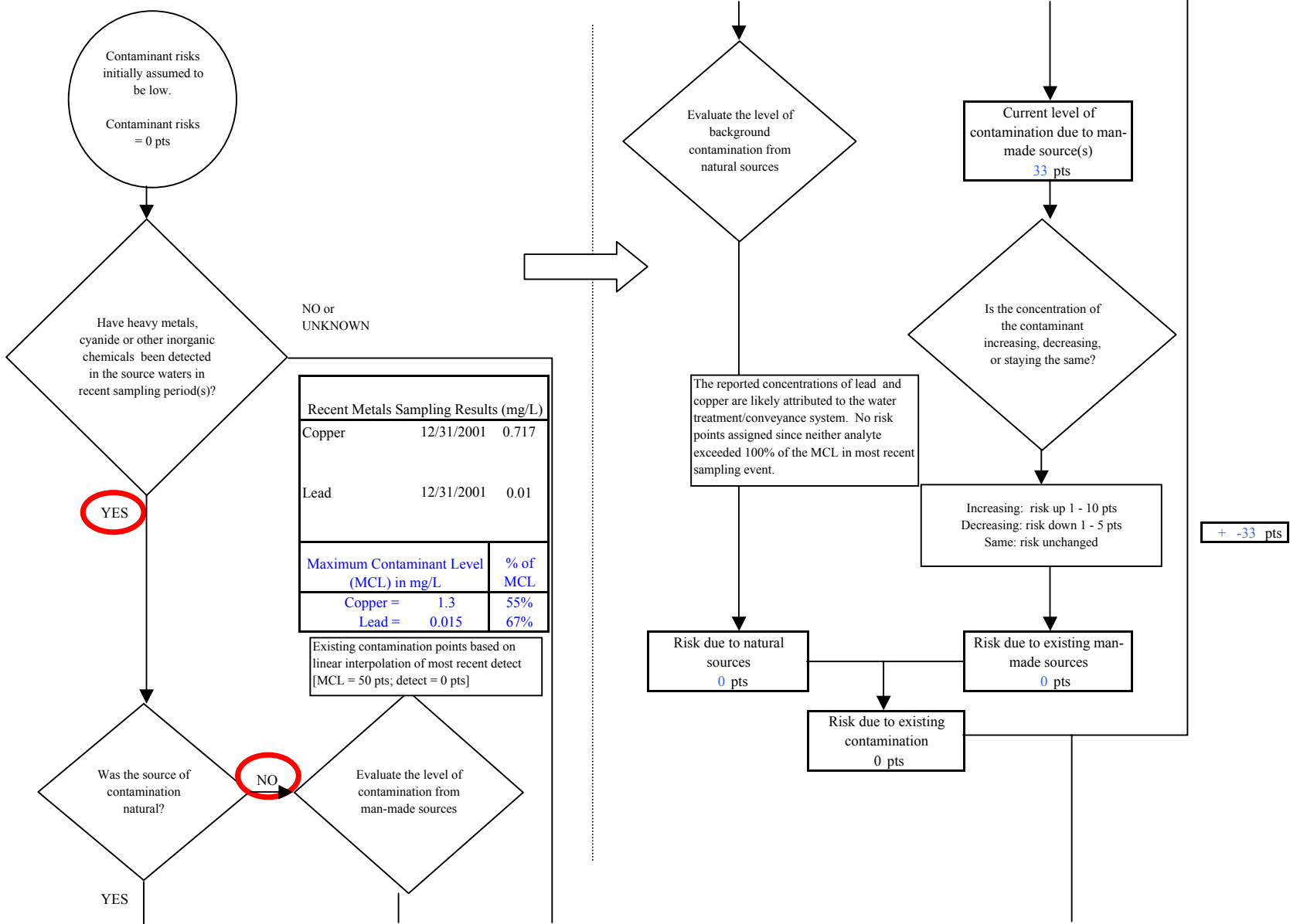


Chart 9. Contaminant risks for LKSD Goodnews Bay Rocky Mountain School (PWS No. 270930.001) - Heavy Metals, Cyanide and Other Inorganic Chemicals

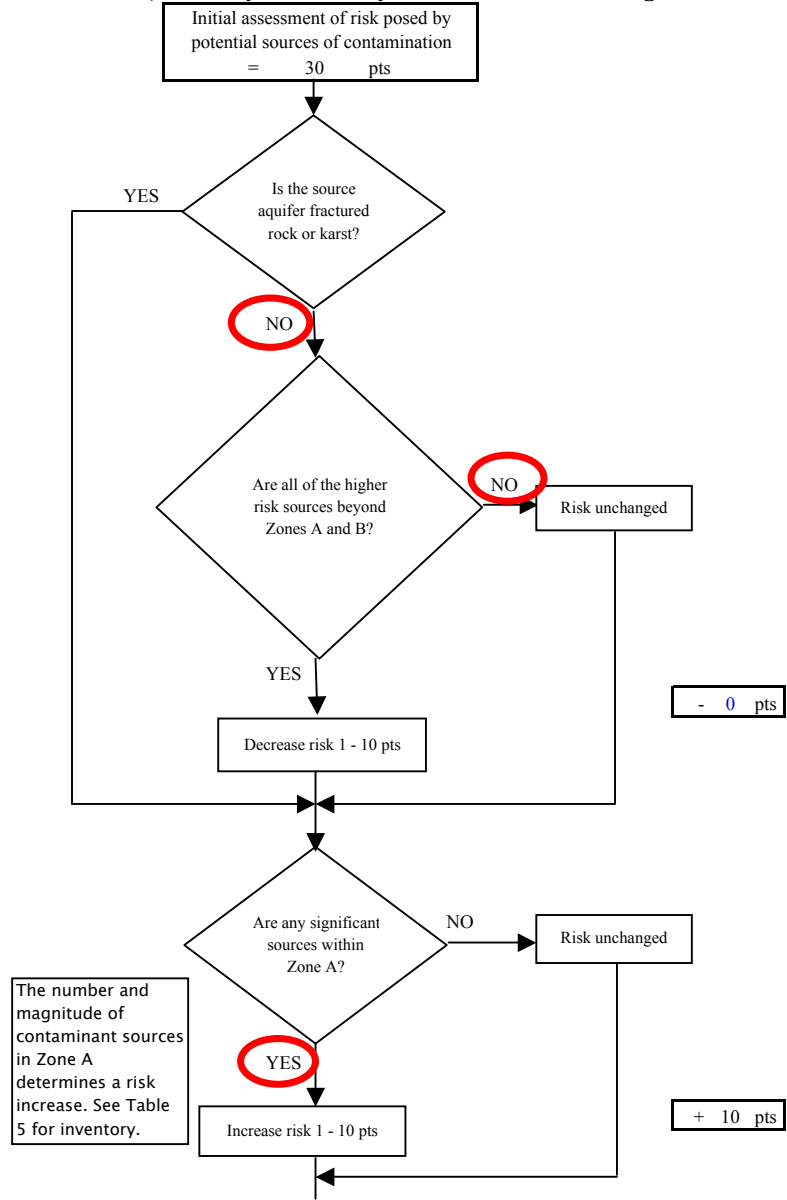
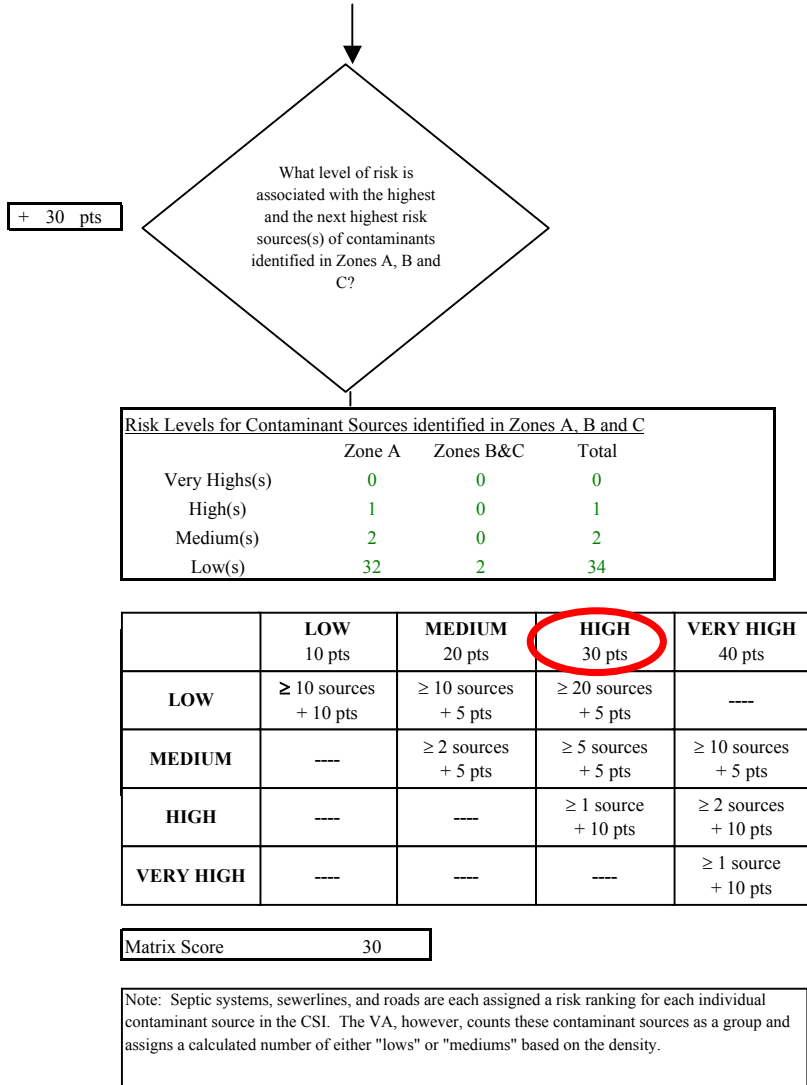


Chart 9. Contaminant risks for LKSD Goodnews Bay Rocky Mountain School (PWS No. 270930.001) - Heavy Metals, Cyanide and Other Inorganic Chemicals

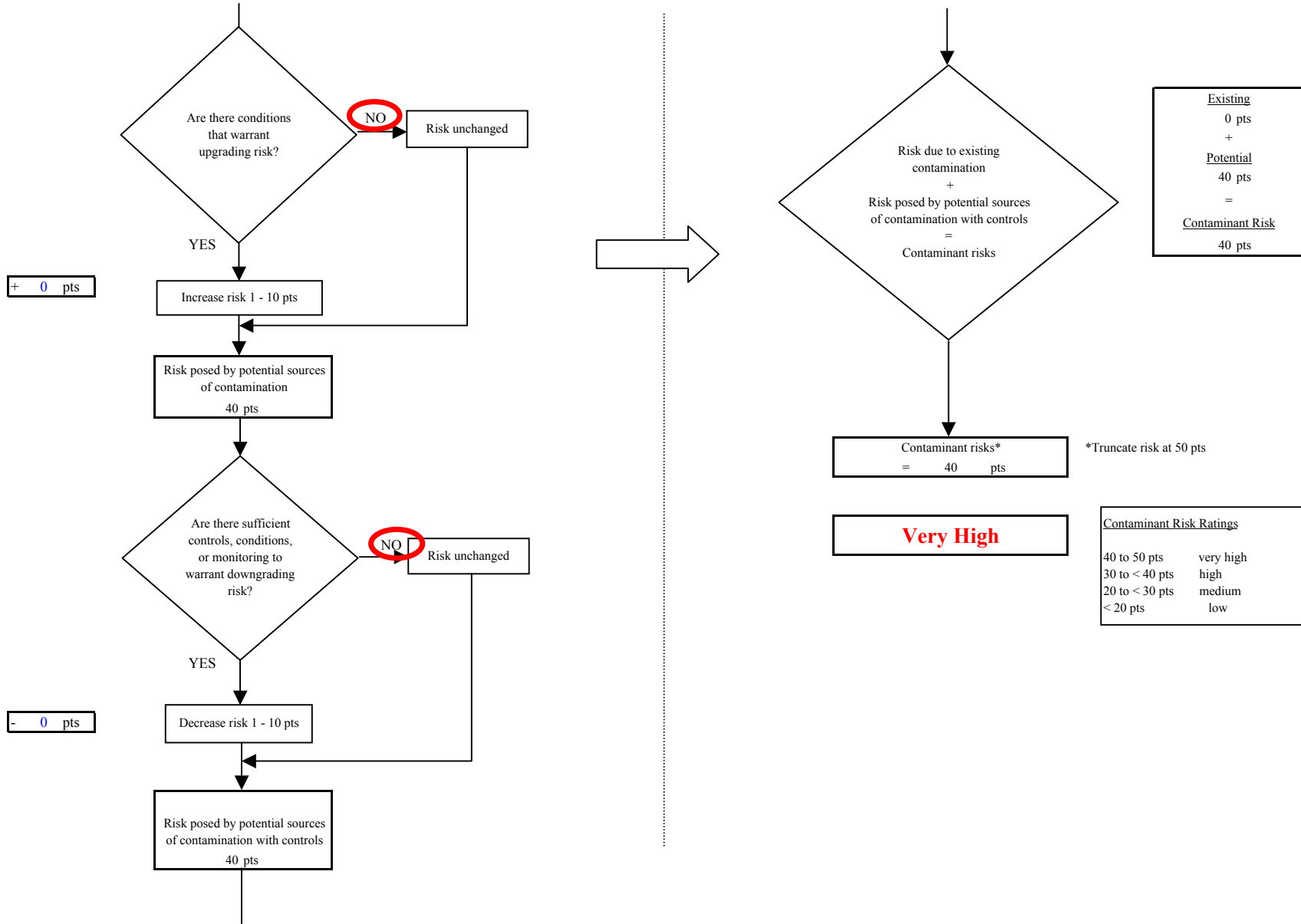


Chart 10. Vulnerability analysis for LKSD Goodnews Bay Rocky Mountain School (PWS No. 270930.001) - Heavy Metals, Cyanide and Other Inorganic Chemicals

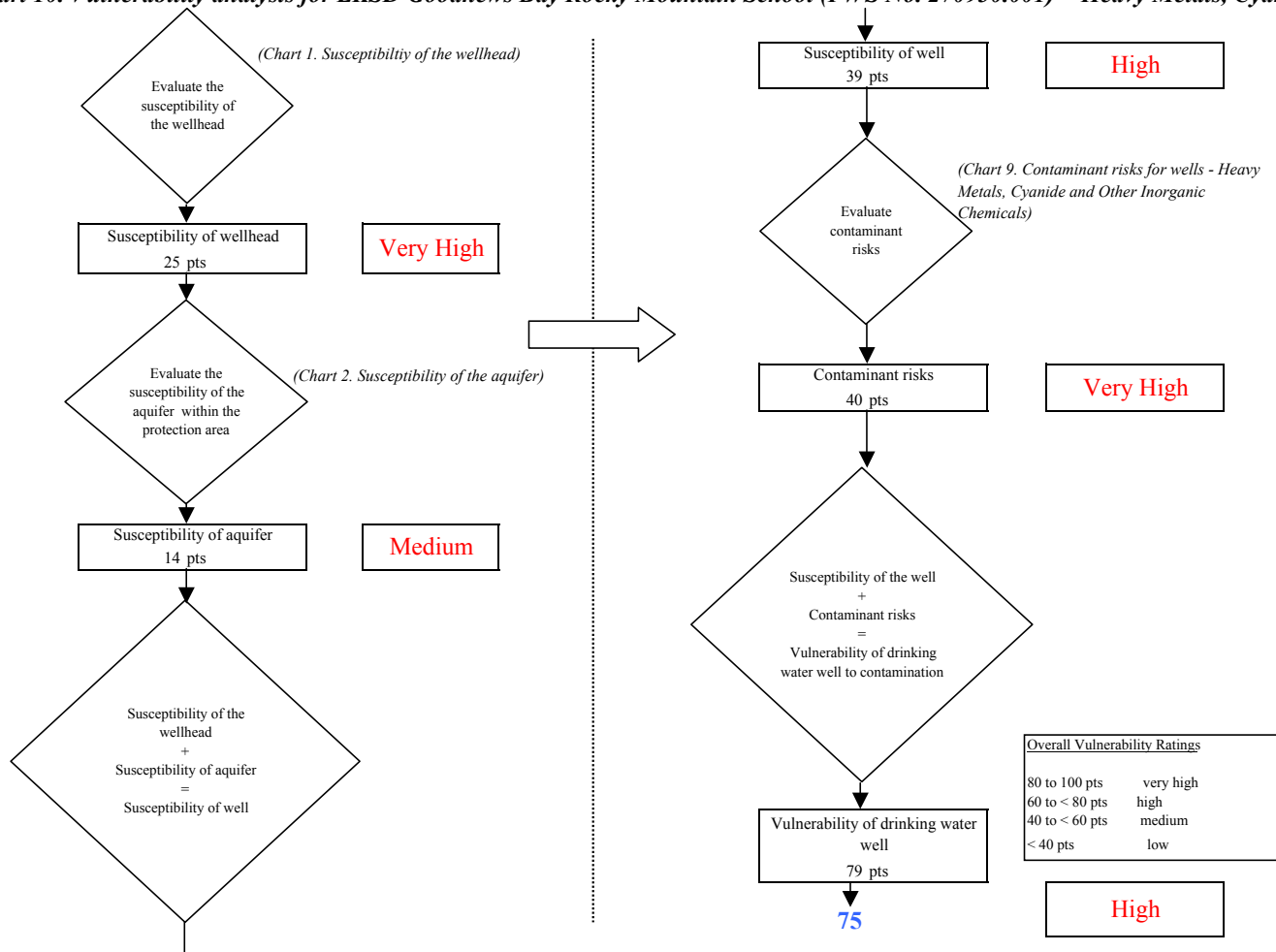


Chart 11. Contaminant risks for LKSD Goodnews Bay Rocky Mountain School (PWS No. 270930.001) - Synthetic Organic Chemicals

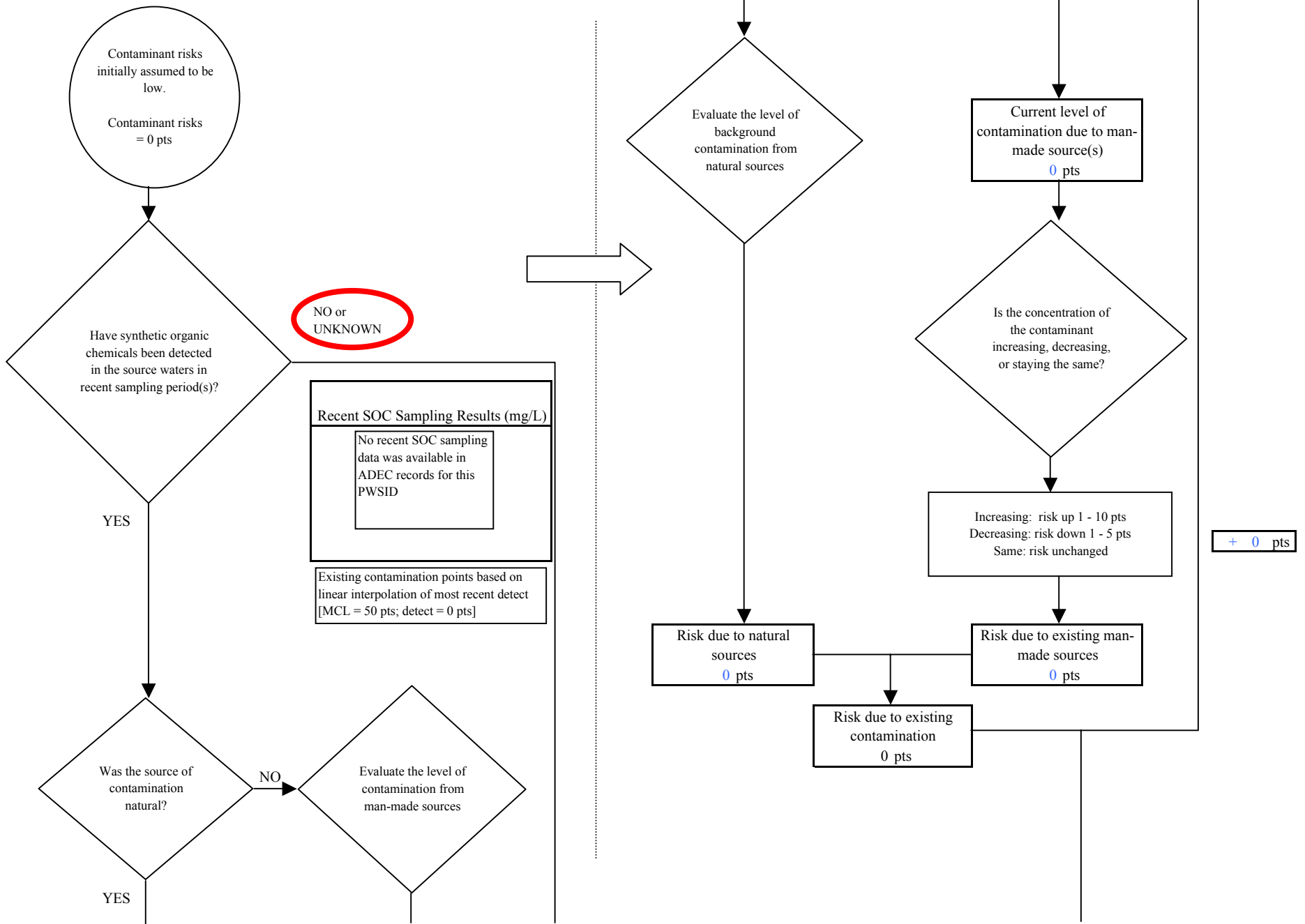


Chart 11. Contaminant risks for LKSD Goodnews Bay Rocky Mountain School (PWS No. 270930.001) - Synthetic Organic Chemicals

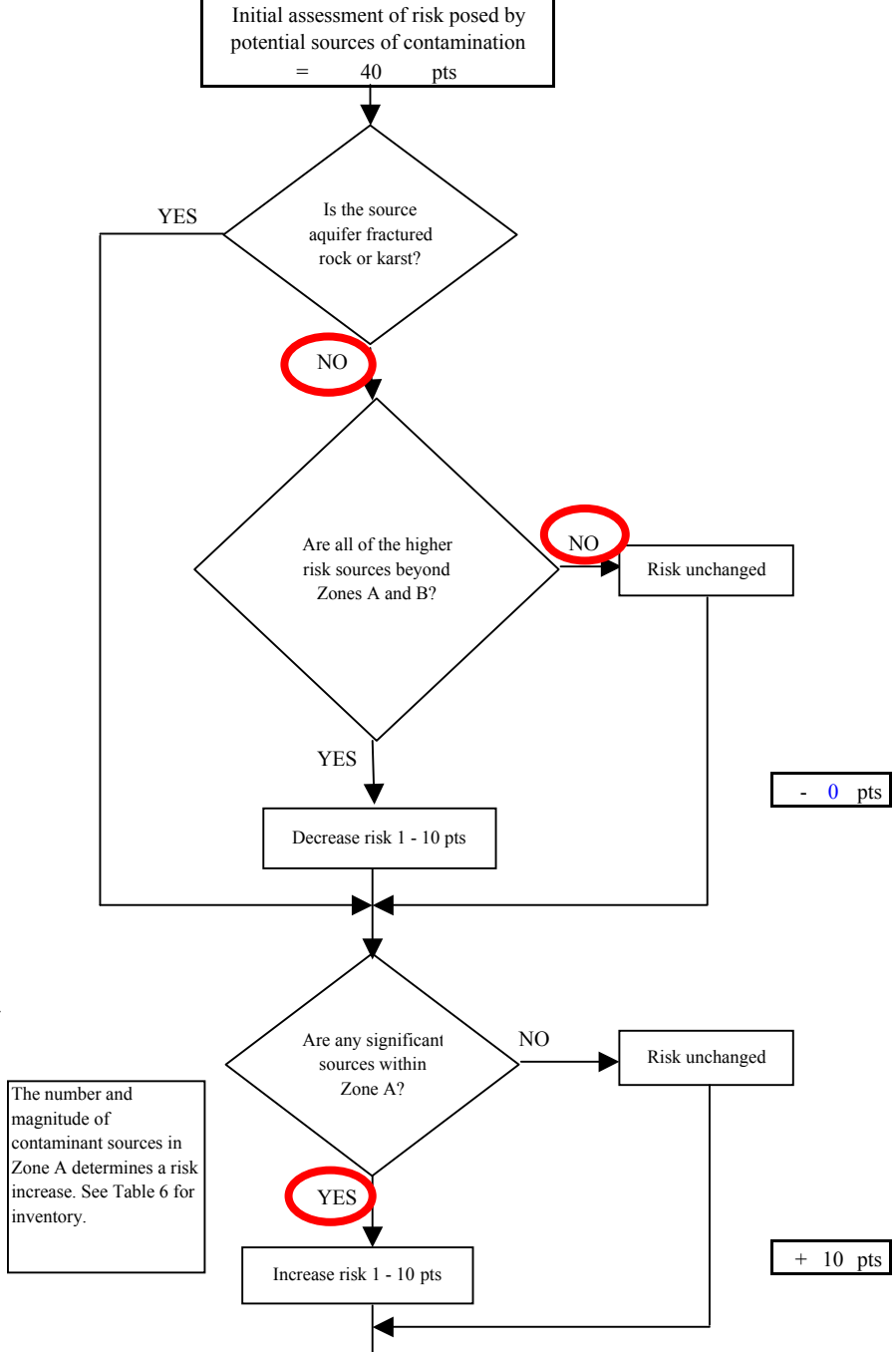
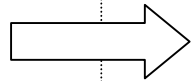
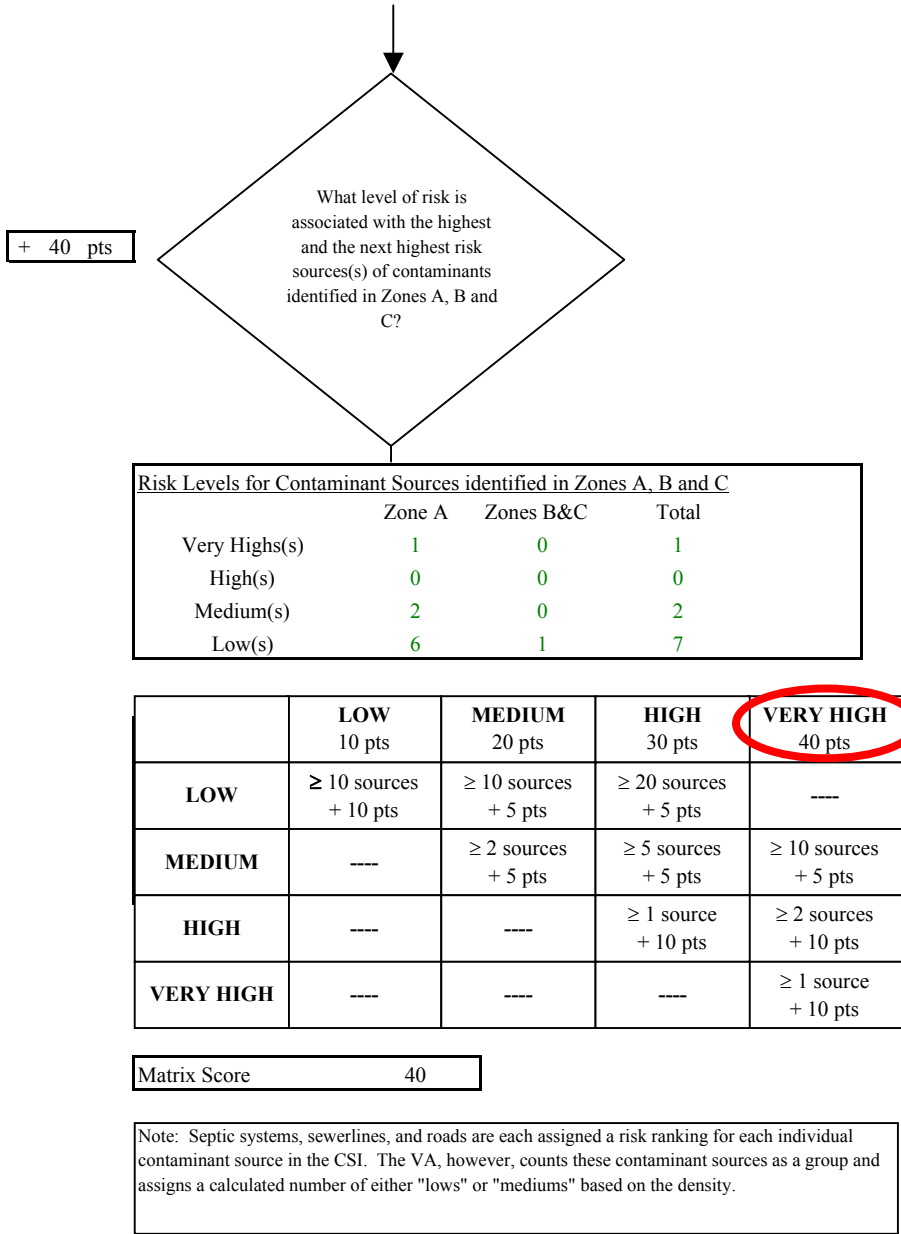


Chart 11. Contaminant risks for LKSD Goodnews Bay Rocky Mountain School (PWS No. 270930.001) - Synthetic Organic Chemicals

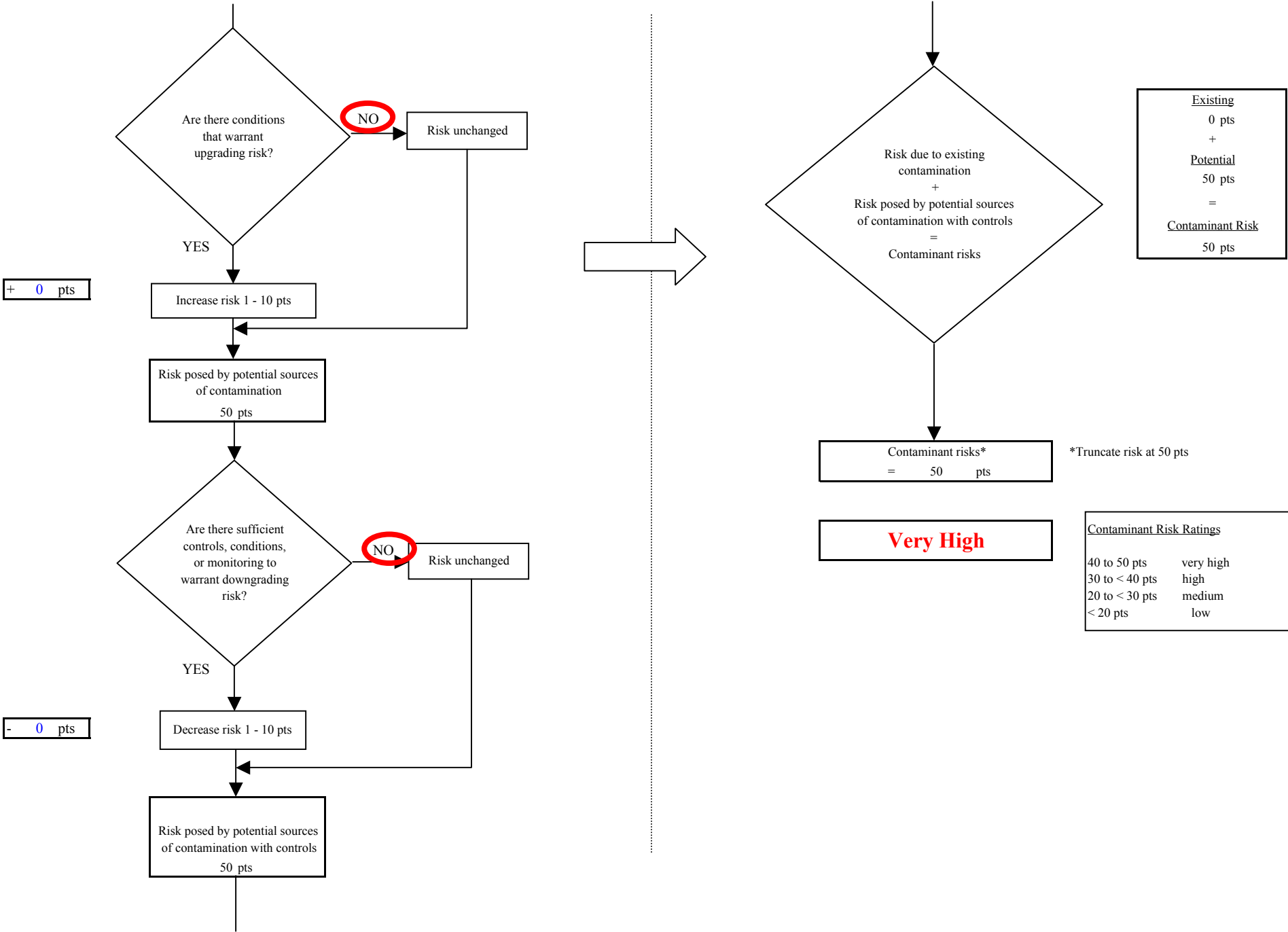


Chart 12. Vulnerability analysis for LKSD Goodnews Bay Rocky Mountain School (PWS No. 270930.001) - Synthetic Organic Chemicals

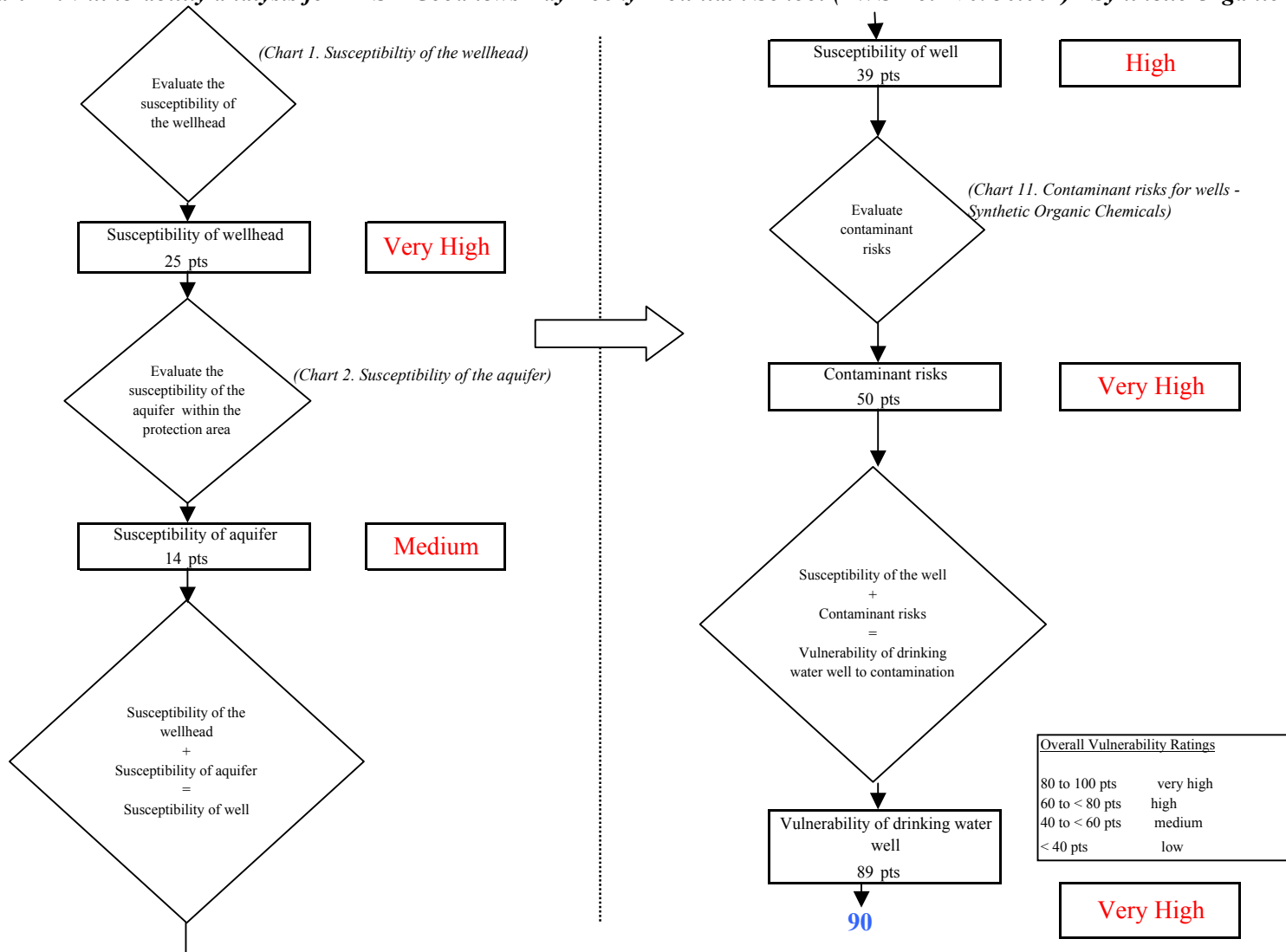


Chart 13. Contaminant risks for LKSD Goodnews Bay Rocky Mountain School (PWS No. 270930.001) - Other Organic Chemicals

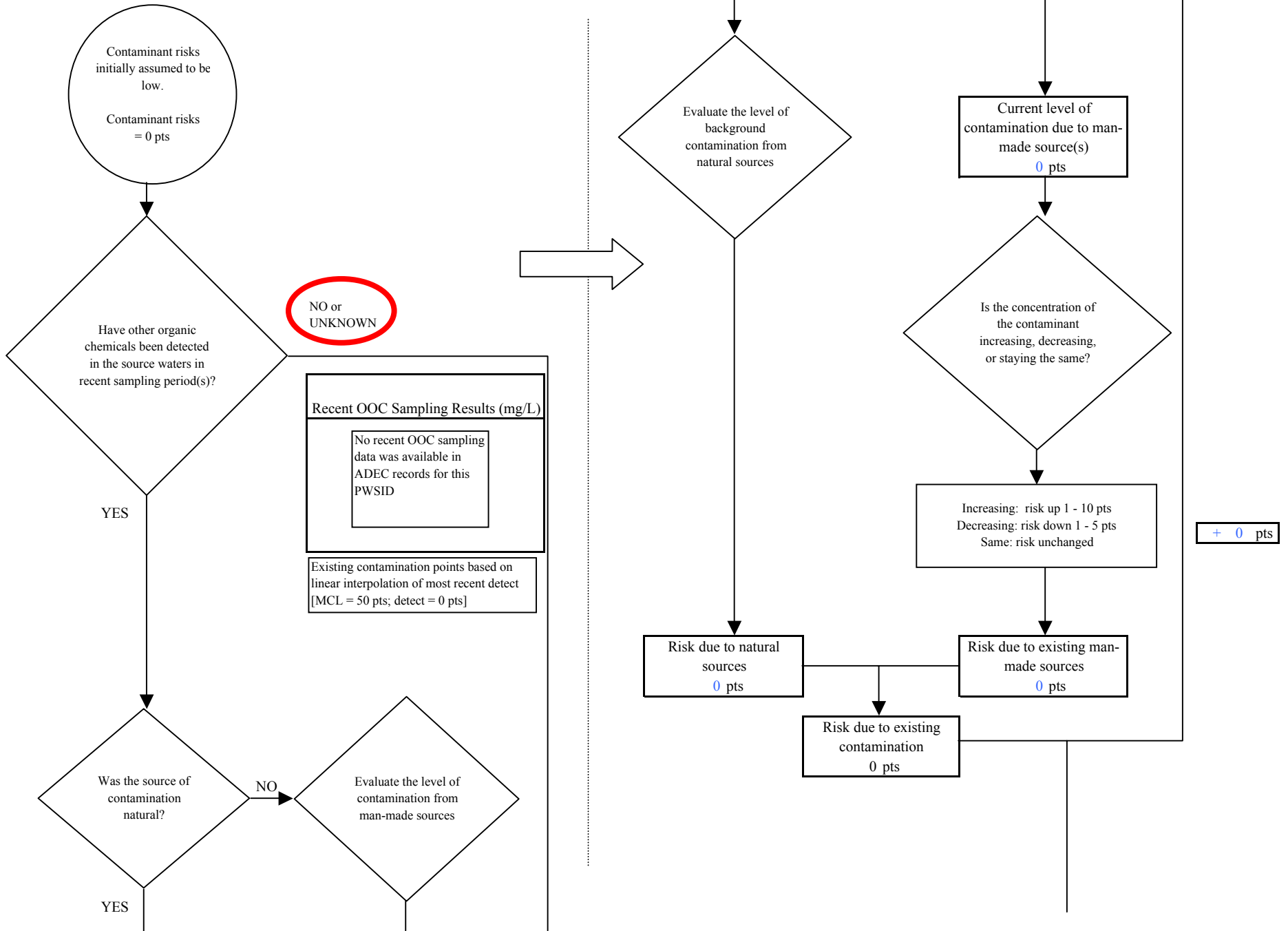


Chart 13. Contaminant risks for LKSD Goodnews Bay Rocky Mountain School (PWS No. 270930.001) - Other Organic Chemicals

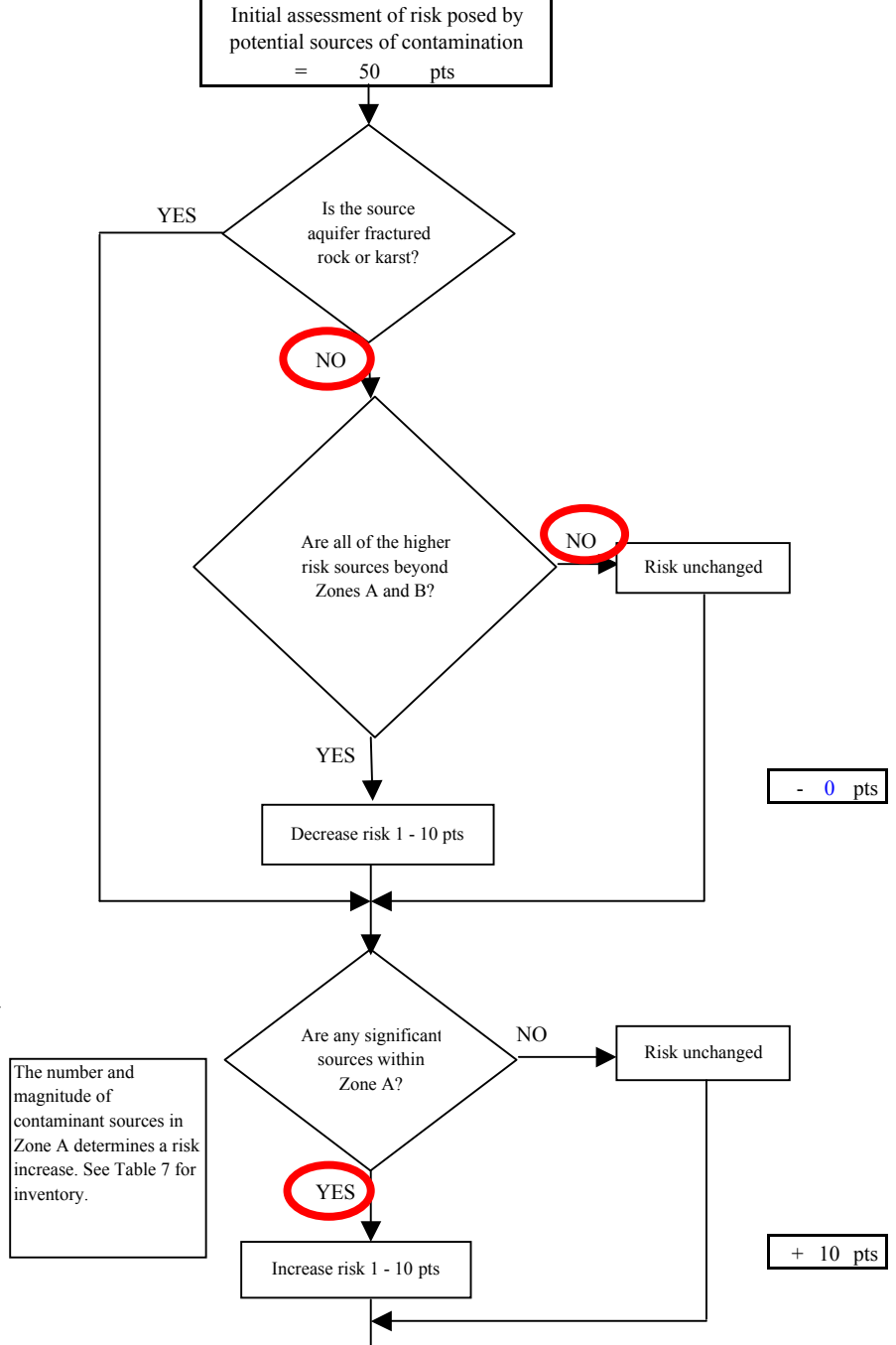
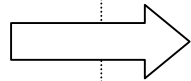
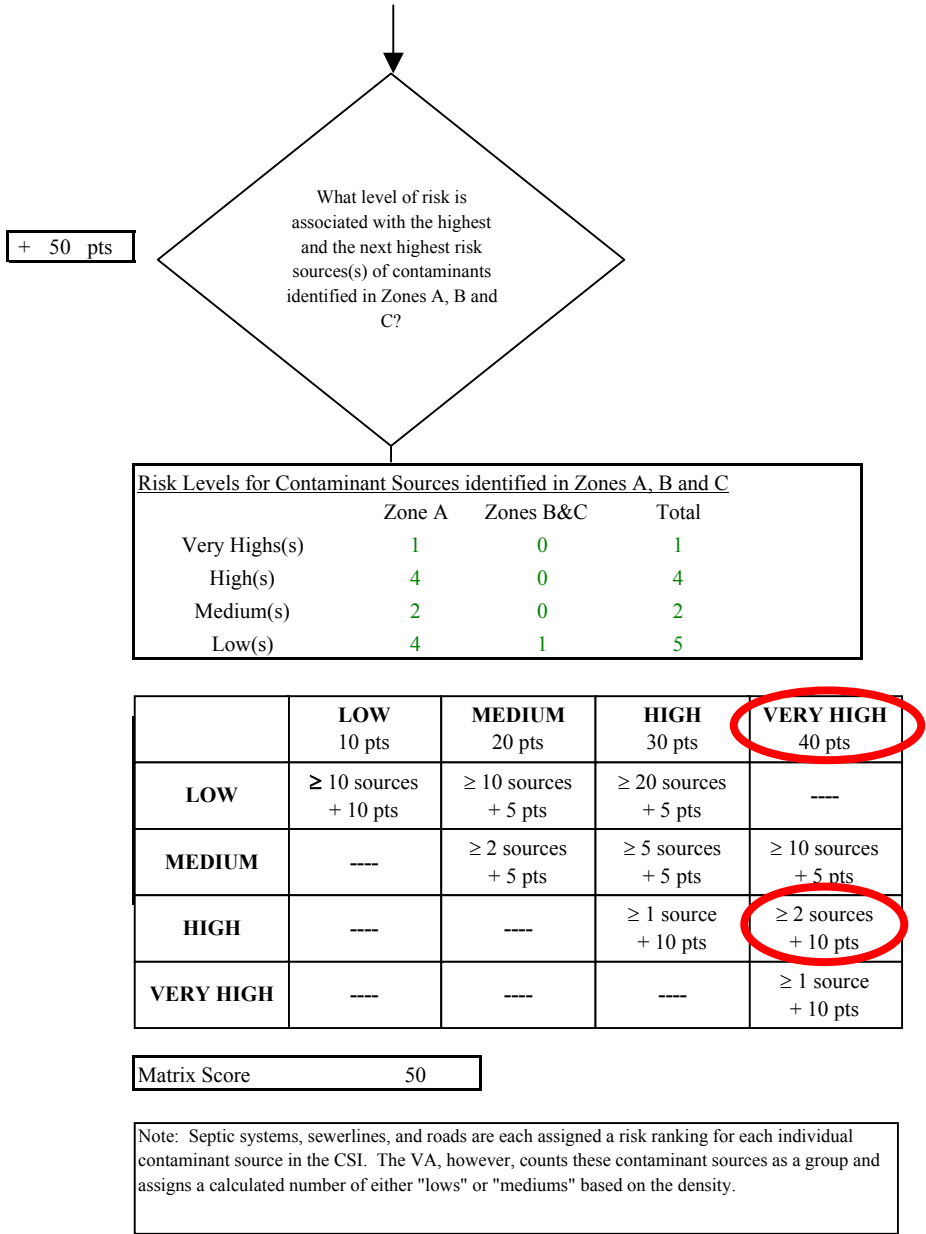


Chart 13. Contaminant risks for LKSD Goodnews Bay Rocky Mountain School (PWS No. 270930.001) - Other Organic Chemicals

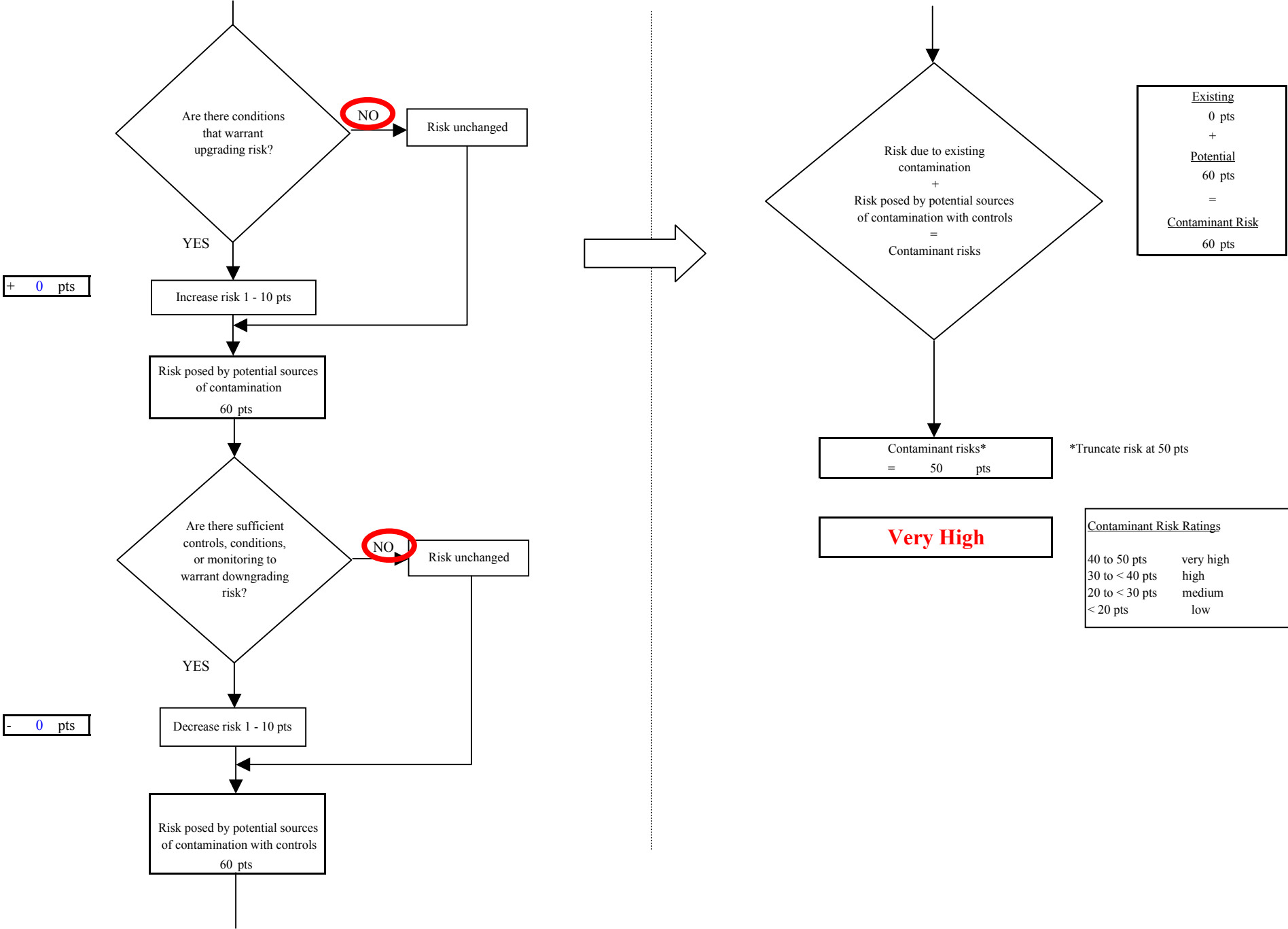


Chart 14. Vulnerability analysis for LKSD Goodnews Bay Rocky Mountain School (PWS No. 270930.001) - Other Organic Chemicals

