

Source Water Assessment

A Hydrogeologic Susceptibility and
Vulnerability Assessment for
North Star Golf Club Drinking Water
System,
Fairbanks area, Alaska

PWSID # 313796

January 2003

DRINKING WATER PROTECTION PROGRAM REPORT Report 789
Alaska Department of Environmental Conservation

Source Water Assessment for North Star Golf Club Drinking Water System Fairbanks area, Alaska PWSID# 312164

January 2003

DRINKING WATER PROTECTION PROGRAM REPORT Report 789

The Drinking Water Protection Program (DWPP) is producing Source Water Assessments in compliance with the Safe Drinking Water Act Amendments of 1996. Each assessment includes a delineation of the source water area, an inventory of potential and existing contaminant sources that may impact the water, a risk ranking for each of these contaminants, and an evaluation of the potential vulnerability of these drinking water sources.

These assessments are intended to provide public water systems owners/operators, communities, and local governments with the best available information that may be used to protect the quality of their drinking water. The assessments combine information obtained from various sources, including the U.S. Environmental Protection Agency, Alaska Department of Environmental Conservation (ADEC), public water system owners/operators, and other public information sources. The results of this assessment are subject to change if additional data becomes available. It is anticipated this assessment will be updated every five years to reflect any changes in the vulnerability and/or susceptibility of public drinking water source. If you have any additional information that may affect the results of this assessment, please contact the Program Coordinator of DWPP, (907) 269-7521.

CONTENTS

| | Page | | Page |
|--|------|--|--------|
| Executive Summary | 1 | Inventory of Potential and Existing Contaminant Sources | 2 |
| North Star Golf Club Public Drinking Water System | 1 | Ranking of Contaminant Risks Vulnerability of North Star Golf Club Drinking Water System | 2 3 |
| North Star Golf Club Protection Area | 1 | References | 5 |

TABLES

| | | |
|-------|--------------------------|---|
| TABLE | 1. Definition of Zones | 2 |
| | 2. Susceptibility | 3 |
| | 3. Contaminant Risks | 3 |
| | 3. Overall Vulnerability | 4 |

APPENDICES

| | |
|----------|--|
| APPENDIX | <p>A. North Star Golf Club Drinking Water Protection Area (Map 1)</p> <p>B. Contaminant Source Inventory for North Star Golf Club (Table 1) Contaminant Source Inventory and Risk Ranking for North Star Golf Club – – Bacteria and Viruses (Table 2) Contaminant Source Inventory and Risk Ranking for North Star Golf Club – – Nitrates/Nitrites (Table 3) Contaminant Source Inventory and Risk Ranking for North Star Golf Club – – Volatile Organic Chemicals (Table 4)</p> <p>C. North Star Golf Club Drinking Water Protection Area and Potential and Existing Contaminant Sources (Map 2)</p> <p>D. Vulnerability Analysis for Contaminant Source Inventory and Risk Ranking for North Star Golf Club Public Drinking Water Source (Charts 1 – 8)</p> |
|----------|--|

Source Water Assessment for North Star Golf Club Source of Public Drinking Water, Fairbanks Area, Alaska

Drinking Water Protection Program Alaska Department of Environmental Conservation

EXECUTIVE SUMMARY

This source water assessment provides an evaluation of the vulnerability of the public water system North Star Golf Club to potential contamination. The public water system for North Star Golf Club is a Class B (transient/non-community) water system consisting of one well on Golf Club Drive near the New Steese Highway approximately 4 miles northeast of Fairbanks, Alaska. The well received a natural susceptibility rating of **Low**. This rating is a combination of a susceptibility rating of **Low** for the actual wellhead and a **High** rating for the aquifer in which the well is drawing water from. Identified potential and current sources of contamination for the North Star Golf Club public drinking water source include: a septic tank cleaning service, a medical or veterinary clinic, a golf course, a parking lot, roads, heating oil tanks, septic systems, and residential area. These are considered as sources of bacteria and viruses, nitrates and/or nitrites, and volatile organic chemicals. Combining the natural susceptibility of the well with the contaminant risk, the public water sources for North Star Golf Club received an overall vulnerability rating of **Medium** for all three contaminant categories: bacteria and viruses, and nitrates and/or nitrites; and volatile organic chemicals.

NORTH STAR GOLF CLUB PUBLIC DRINKING WATER SYSTEM

North Star Golf Club public water system is a Class B (transient/non-community) water system. The system consists of one well on Golf Club Drive near the New Steese Highway approximately 4 miles northeast of Fairbanks, Alaska (T1N, R1E, Section 19) (See Map 1 of Appendix A). Fairbanks and its surrounding communities are located in the Fairbanks North Star Borough which is near the center of Alaska (Please see the inset of Map 1 in Appendix A for location). The Borough's current population is 82,840 making it the second-largest population center in the state (ADCED, 2002). Communities located within the Borough include : College, Eielson Air Force Base, Ester, Fairbanks, Fox, Harding Lake, Moose Creek, North Pole, Pleasant Valley, Salcha, and Two Rivers.

The majority of residents the Fairbanks area use individual water wells or hauled water, and septic

systems (ADCED, 2002). Heating oil (typically stored in both above and below ground 275 to 500-gallon tanks) is used for heating homes and buildings. Refuse is transported to the Fairbanks North Star Borough landfill.

The Fairbanks area includes two distinct topographic areas: the floodplain of the Tanana River and the Chena River, and the uplands north of this floodplain. This water system is located in the uplands at an elevation of approximately 675 feet above sea level.

According to the well log for this water system, the depth of the well is 140 feet below the ground surface, and is screened in bedrock (schist). Bedrock in this area is predominantly a metamorphosed marine mud deposit, called a pelitic schist. The schist is locally intruded by granitic rocks – granite and quartz diorite. Groundwater in the bedrock is principally contained in fractures. The water wells in this area with the greatest well recharge appear to be in quartz veins, quartzite, and siliceous schist (Nelson, 1978).

Groundwater in the uplands is recharged by local precipitation. Outflow of ground water in the uplands primarily occurs two ways. In areas under artesian pressure (pressure caused by overlying permafrost), water can flow to the surface through thawed conduits within the permafrost. Otherwise groundwater will flow under the permafrost (if present) and out to the groundwater beneath the adjacent flood plain or creek valley (Nelson, 1978).

The Sanitary Survey (7/23/01) for the water system indicates there is a sanitary seal on the well. The well has been grouted to a depth of 20 feet. The well pad area is sloped away from the well providing adequate drainage. Proper drainage on the surface as well as grouting the well help to prevent potential contaminants from travelling down the well casing. The well is not located in a known floodplain.

This system operates year-round serving approximately 50+ non-residents through one service connection.

NORTH STAR GOLF CLUB DRINKING WATER PROTECTION AREA

The pathways most likely for surface contamination to reach the groundwater are identified as the first step in determining a drinking water system’s risk. These areas are determined by looking at the characteristics of the soil, groundwater, aquifer, and well.

The most probable area for contamination to reach the drinking water well is the area that contributes water to the well, the groundwater recharge area. This area is designated as the drinking water protection area. Because releases of contaminants within the protection area are most likely to impact the drinking water well, this area will serve as the focus for voluntary protection efforts.

An outline of the immediate watershed was used to determine the size and shape of the protection area for North Star Golf Club. Available geology was also considered to take into account any uncertainties in groundwater flow and aquifer characteristics to arrive at a meaningful protection area (Please refer to the Guidance Manual for Class B Public Water Systems for additional information).

The protection areas established for wells by the ADEC are usually separated into four zones, limited by the watershed. These zones correspond to differences in the time-of-travel (TOT) of the water moving through the aquifer to the well. The protection area for North Star Golf Club is limited by its immediate watershed and includes only Zone A (See Map 1 of Appendix A). The input parameters describing the attributes of the aquifer in this calculation were adopted from the U.S. Geological Survey (*Patrick, Brabets, and Glass, 1989*), and State of Alaska Department of Water Resources (*Jokela et. al., 1991*).

The time of travel for contaminants within the water varies and is dependent on the physical and chemical characteristics of each contaminant. The following is a summary of the four protection area zones for wells and the calculated time-of-travel for each:

Table 1. Definition of Zones

| Zone | Definition |
|------|---|
| A | ¼ the distance for the 2-yr. time-of-travel |
| B | Less than the 2 year time-of-travel |
| C | Less Than the 5 year time-of-travel |
| D | Less than the 10 year time-of-travel |

INVENTORY OF POTENTIAL AND EXISTING CONTAMINANT SOURCES

The Drinking Water Protection Program has completed an inventory of potential and existing sources of contamination within the North Star Golf Club protection area. This inventory was completed through a search of agency records and other publicly available information. Potential drinking water contaminants are found within agricultural, residential, commercial, and industrial areas, but can also occur within areas that have little or no development.

For the basis of all Class B public water system assessments, three categories of drinking water contaminants were inventoried. They include:

- Bacteria and viruses;
- Nitrates and/or nitrites;
- Volatile organic chemicals

The sources are displayed on Map 2 of Appendix C and summarized in Table 1 of Appendix B.

RANKING OF CONTAMINANT RISKS

Once the potential and existing sources of contamination have been identified, they are assigned a ranking according to what type and level of risk they represent. Ranking of contaminant risks for a “potential” or “existing” source of contamination is a function of toxicity and volumes of specific contaminants associated with that source. Rankings include:

- Low;
- Medium;
- High; and
- Very High.

The time-of-travel for contaminants within the water varies and is dependent on the physical and chemical characteristics of each contaminant. Bacteria and Viruses are only inventoried in Zones A and B because of their short life span. Only “Very High” and “High” rankings are inventoried within the outer Zone D due to the probability of contaminant dilution by the time the contaminants get to the well.

Tables 2 through 4 in Appendix B contain the ranking of potential and existing sources of contamination with respect to bacteria and viruses, nitrates and/or nitrites, and volatile organic chemicals.

VULNERABILITY OF NORTH STAR GOLF CLUB DRINKING WATER SYSTEM

Vulnerability of a drinking water source to contamination is a combination of two factors:

- Natural susceptibility; and
- Contaminant risks.

Appendix D contains eight charts, which together form the ‘Vulnerability Analysis’ for a source water assessment for a public drinking water source. Chart 1 analyzes the ‘Susceptibility of the Wellhead’ to contamination by looking at the construction of the well and its surrounding area. Chart 2 analyzes the ‘Susceptibility of the Aquifer’ to contamination by looking at the naturally occurring attributes of the water source and influences on the groundwater system that might lead to contamination. Chart 3 analyzes ‘Contaminant Risks’ for the drinking water source with respect to bacteria and viruses. The ‘Contaminant Risks’ portion of the analysis considers potential sources of contaminants as well as a review of contamination that has or may have occurred, but has not arrived or been detected at the well. Lastly, Chart 4 contains the ‘Vulnerability Analysis for Bacteria and Viruses’. Charts 5 through 8 contain the Contaminant Risks and Vulnerability Analyses for nitrates and nitrites and volatile organic chemicals, respectively.

A score for the Natural Susceptibility is reached by considering the properties of the well and the aquifer.

Susceptibility of the Wellhead (0 – 25 Points)
(Chart 1 of Appendix D)

+

Susceptibility of the Aquifer (0 – 25 Points)
(Chart 2 of Appendix D)

=

Natural Susceptibility (Susceptibility of the Well)
(0 – 50 Points)

A ranking is assigned for the Natural Susceptibility according to the point score:

| Natural Susceptibility Ratings | |
|--------------------------------|-----------|
| 40 to 50 pts | Very High |
| 30 to < 40 pts | High |
| 20 to < 30 pts | Medium |
| < 20 pts | Low |

The well for the North Star Golf Club is completed in a confined fractured bedrock aquifer. The silt layer above the aquifer creates a barrier to contaminants traveling downward from the surface with the

precipitation and surface water runoff. Although the aquifer is relatively protected in the area of the well, this silt layer thins towards the hilltops creating easier access for surface contaminants to enter the aquifer and travel downhill, potentially towards the well. Also, the private wells within the protection area offer an easy pathway for contaminants to travel down into the confined aquifer. Table 2 shows the Susceptibility scores and ratings for North Star Golf Club.

Table 2. Susceptibility

| | Score | Rating |
|--------------------------------|-------|--------|
| Susceptibility of the Wellhead | 0 | Low |
| Susceptibility of the Aquifer | 15 | High |
| Natural Susceptibility | 15 | Low |

Contaminant risks to a drinking water source depend on the type, number or density, and distribution of contaminant sources. This score has been derived from an examination of existing and historical contamination that has been detected at the drinking water source through routine sampling. It also evaluates potential sources of contamination. Flow charts are used to assign a point score, and ratings are assigned in the same way as for the natural susceptibility:

| Contaminant Risk Ratings | |
|--------------------------|-----------|
| 40 to 50 pts | Very High |
| 30 to < 40 pts | High |
| 20 to < 30 pts | Medium |
| < 20 pts | Low |

Table 3 summarizes the Contaminant Risks for each category of drinking water contaminants.

Table 3. Contaminant Risks

| Category | Score | Rating |
|----------------------------|-------|-----------|
| Bacteria and Viruses | 43 | Very High |
| Nitrates and/or Nitrites | 43 | Very High |
| Volatile Organic Chemicals | 27 | Medium |

Finally, an overall vulnerability score is assigned for each water system by combining each of the contaminant risk scores with the natural susceptibility score:

$$\begin{array}{r}
\text{Natural Susceptibility (0 – 50 points)} \\
+ \\
\text{Contaminant Risks (0 – 50 points)} \\
= \\
\text{Vulnerability of the} \\
\text{Drinking Water Source to Contamination (0 – 100).}
\end{array}$$

Again, rankings are assigned according to a point score:

| Overall Vulnerability Ratings | |
|-------------------------------|-----------|
| 80 to 100 pts | Very High |
| 60 to < 80 pts | High |
| 40 to < 60 pts | Medium |
| < 40 pts | Low |

Table 4 contains the overall vulnerability scores (0 – 100) and ratings for each of the three categories of drinking water contaminants. Note: scores are rounded off to the nearest five.

Table 4. Overall Vulnerability

| Category | Score | Rating |
|----------------------------|-------|--------|
| Bacteria and Viruses | 55 | Medium |
| Nitrates and Nitrites | 55 | Medium |
| Volatile Organic Chemicals | 40 | Medium |

Bacteria and Viruses

The contaminant risk for bacteria and viruses is very high with the large capacity septic systems near the well representing the greatest risk to the drinking water well (See Chart 3 – Contaminant Risks for Bacteria and Viruses in Appendix D).

Only a small amount of bacteria and viruses are required to endanger public health. Bacteria and viruses have not been detected during recent sampling of this water system. After combining the contaminant risk for bacteria and viruses with the natural susceptibility of the well, the overall vulnerability of the well to contamination is medium.

Nitrates and Nitrites

The contaminant risk for nitrates and nitrites is very high with the large capacity septic system near the well representing the greatest risk to this source of public drinking water (See Chart 5 - Contaminant Risks for Nitrates and/or Nitrites in Appendix D).

Nitrates are very mobile, moving at approximately the same rate as water. Sampling history for the North Star Golf Club well indicates that very low concentrations of nitrate have been detected in the drinking water. Recent nitrate concentration ranged from not detected to 0.110 mg/L or from 0 to 1% of the Maximum Contaminant Level (MCL) of 10 mg/L. The MCL is the maximum level of contaminant that is allowed by the Environmental Protection Agency (EPA) to exist in drinking water.

After combining the contaminant risk for nitrates and nitrites with the natural susceptibility of the well, the overall vulnerability of the well to contamination is medium.

Volatile Organic Chemicals

The contaminant risk for volatile organic chemicals is medium with the density of heating oil storage tanks creating the greatest risk for volatile organic chemicals (See Chart 7 – Contaminant Risks for Volatile Organic Chemicals in Appendix D).

Both underground and above ground heating oil storage tanks are the standard way of heating homes and businesses in the area surrounding Fairbanks. The most common causes of fuel leaks of these heating oil systems are overfilling the tank, ruptured fuel lines, leaking storage tanks, damaged or faulty valves and vandalism. Regular system maintenance can help prevent many of these harmful fuel leaks.

Volatile Organic Chemicals have not been sampled for in the North Star Golf Club public water system. After combining the contaminant risk for volatile organic chemicals with the natural susceptibility of the well, the overall vulnerability of the well to contamination is medium.

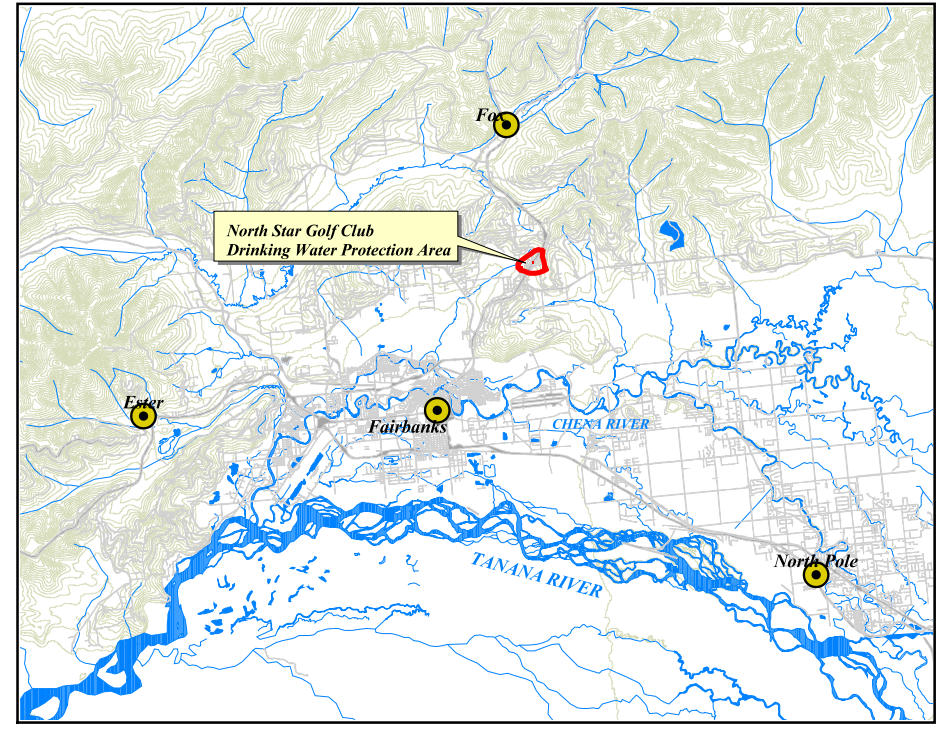
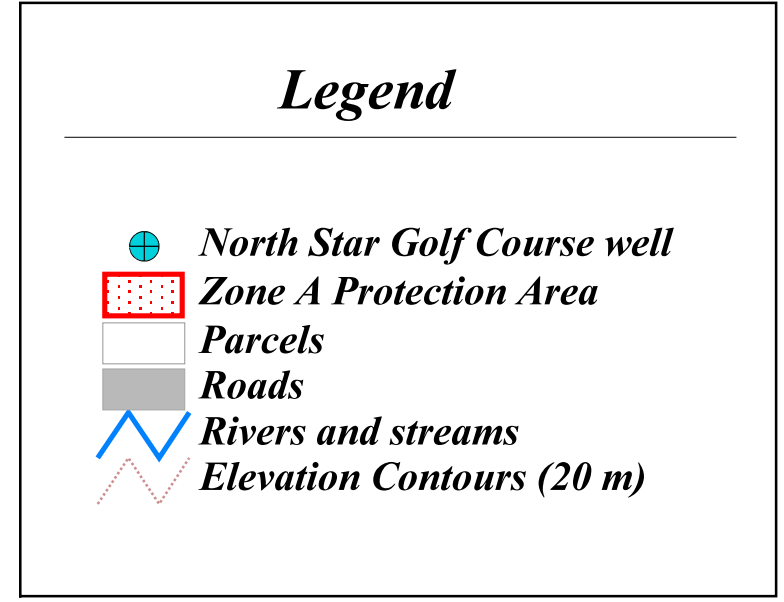
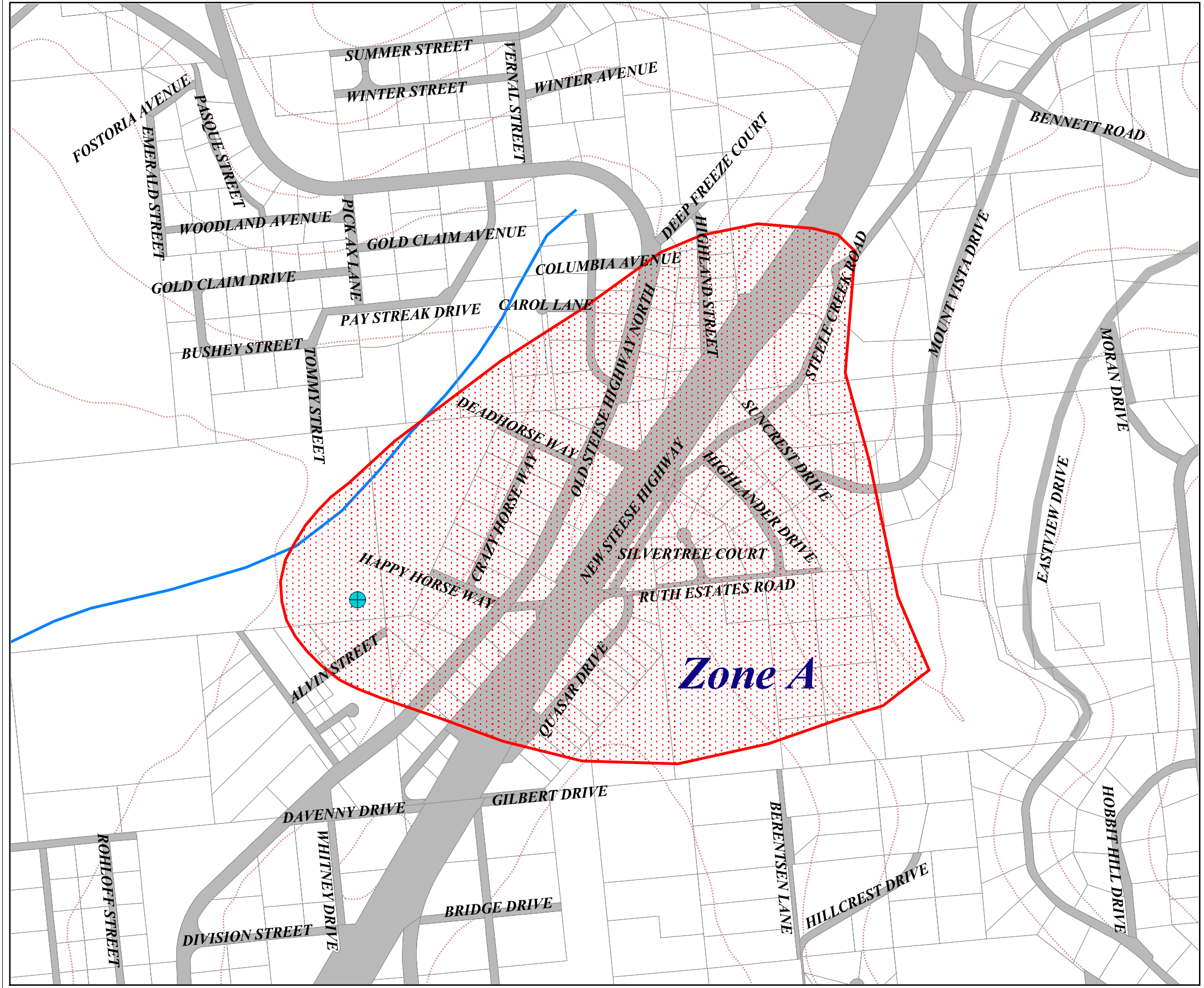
REFERENCES

- Alaska Department of Community and Economic Development (ADCED), 2002 [WWW document]. URL http://www.dced.state.ak.us/mra/CF_BLOCK.cfm.
- Forbes, R.B. and Weber, F.R., 1981. Bedrock Geologic Map of the Fairbanks Mining District, Alaska. Funded by the State of Alaska, US Geological Survey, and The National Science Foundation.
- Freeze, R.A. and Cherry, J.A., 1979. Groundwater. Prentice-Hall, Englewood Cliffs, NJ.
- Jokela, J.B., Munter, J.A., and Evans, J.G., 1991, Ground-water resources of the Palmer-Big Lake area, Alaska: a conceptual model. Division of Geological & Geophysical Surveys Reports of Investigations 90-4, State of Alaska Department of Natural Resources, Fairbanks, AK.
- King, P.B., compiler, 1969, Tectonic map of North America: US Geological Survey Map, (scale 1:5,000,000) 2 sheets.
- Nelson, Gordon L., 1978, Hydrologic Information for Land-Use Planning, Fairbanks Vicinity, Alaska. US Department of the Interior Geological Survey Open File Report 78-959, 47p.
- Patrick, L.D., Brabets, T.P., and Glass, R.L., 1989, Simulation of ground-water flow at Anchorage, Alaska: US Geological Survey Water-Resources Investigations Report 88-4139, 41p.
- United States Environmental Protection Agency (EPA), 2002 [WWW document]. URL <http://www.epa.gov/safewater/mcl.html>.

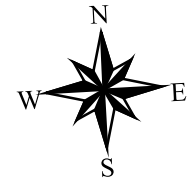
APPENDIX A

North Star Golf Club Drinking Water Protection Area Location Map (Map 1)

North Star Golf Club Drinking Water Protection Area



PWSID 313796



Map 1

APPENDIX B

Contaminant Source Inventory and Risk Ranking for North Star Golf Club (Tables 1-4)

Table 1**Contaminant Source Inventory for
North Star Golf Club****PWSID 313796.001**

| Contaminant Source Type | Contaminant Source ID | CS ID tag | Zone | Map Number | Comments |
|---|------------------------------|------------------|-------------|-------------------|--|
| Septic tank cleaning and servicing | C39 | C39-1 | A | 2 | 935 Highland Street |
| Injection wells (Class V) Large-Capacity Septic System (Drainfield Disposal Method) | D10 | D10-1 | A | 2 | North Star Golf Club |
| Injection wells (Class V) Large-Capacity Septic System (Drainfield Disposal Method) | D10 | D10-2 | A | 2 | 479 Ruth Estates Road |
| Residential Areas | R01 | | A | 2 | Approximately 150 acres |
| Septic systems (serves one single-family home) | R02 | | A | 2 | Approximately 76 (approximated by number of parcels designated as residential) |
| Tanks, heating oil, residential (above ground) | R08 | | A | 2 | Approximately 76 (approximated by number of parcels designated as residential) |
| Tanks, heating oil, nonresidential (aboveground) | T14 | T14-1 | A | 2 | North Star Golf Club |
| Golf courses | X02 | X02-1 | A | 2 | North Star Golf Club |
| Highways and roads, dirt/gravel | X24 | | A | 2 | 11 gravel roads within Zone A |
| Parking lot | X27 | X27-1 | A | 2 | North Star Golf Club |
| Medical/veterinary facilities (doctor or dentist offices, hospitals, nursing homes) | X40 | X40-1 | A | 2 | 479 Ruth Estates Road |

Table 2

*Contaminant Source Inventory and Risk Ranking for
North Star Golf Club
Sources of Bacteria and Viruses*

PWSID 313796.001

| <i>Contaminant Source Type</i> | <i>Contaminant Source ID</i> | <i>CS ID tag</i> | <i>Zone</i> | <i>Risk Ranking for Analysis</i> | <i>Map Number</i> | <i>Comments</i> |
|---|------------------------------|------------------|-------------|----------------------------------|-------------------|--|
| Highways and roads, dirt/gravel | X24 | | A | Low | 2 | 11 gravel roads within Zone A |
| Septic systems (serves one single-family home) | R02 | | A | Low | 2 | Approximately 76 (approximated by number of parcels designated as residential) |
| Residential Areas | R01 | | A | Low | 2 | Approximately 150 acres |
| Septic tank cleaning and servicing | C39 | C39-1 | A | Low | 2 | 935 Highland Street |
| Injection wells (Class V) Large-Capacity Septic System (Drainfield Disposal Method) | D10 | D10-1 | A | High | 2 | North Star Golf Club |
| Injection wells (Class V) Large-Capacity Septic System (Drainfield Disposal Method) | D10 | D10-2 | A | High | 2 | 479 Ruth Estates Road |
| Medical/veterinary facilities (doctor or dentist offices, hospitals, nursing homes) | X40 | X40-1 | A | Medium | 2 | 479 Ruth Estates Road |

Table 3

*Contaminant Source Inventory and Risk Ranking for
North Star Golf Club
Sources of Nitrates/Nitrites*

PWSID 313796.001

| <i>Contaminant Source Type</i> | <i>Contaminant Source ID</i> | <i>CS ID tag</i> | <i>Zone</i> | <i>Risk Ranking for Analysis</i> | <i>Map Number</i> | <i>Comments</i> |
|---|------------------------------|------------------|-------------|----------------------------------|-------------------|--|
| Residential Areas | R01 | | A | Low | 2 | Approximately 150 acres |
| Septic systems (serves one single-family home) | R02 | | A | Low | 2 | Approximately 76 (approximated by number of parcels designated as residential) |
| Highways and roads, dirt/gravel | X24 | | A | Low | 2 | 11 gravel roads within Zone A |
| Septic tank cleaning and servicing | C39 | C39-1 | A | Low | 2 | 935 Highland Street |
| Injection wells (Class V) Large-Capacity Septic System (Drainfield Disposal Method) | D10 | D10-1 | A | High | 2 | North Star Golf Club |
| Injection wells (Class V) Large-Capacity Septic System (Drainfield Disposal Method) | D10 | D10-2 | A | High | 2 | 479 Ruth Estates Road |
| Golf courses | X02 | X02-1 | A | Medium | 2 | North Star Golf Club |
| Medical/veterinary facilities (doctor or dentist offices, hospitals, nursing homes) | X40 | X40-1 | A | Low | 2 | 479 Ruth Estates Road |

Table 4

*Contaminant Source Inventory and Risk Ranking for
North Star Golf Club
Sources of Volatile Organic Chemicals*

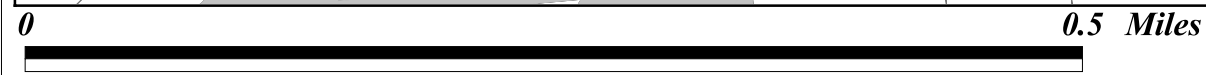
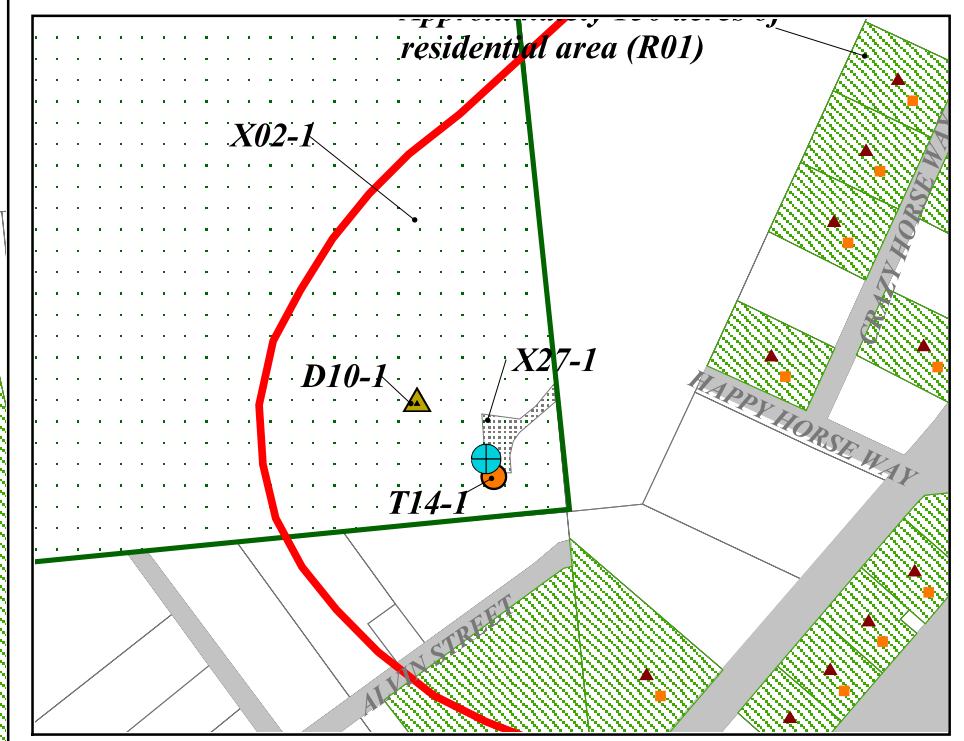
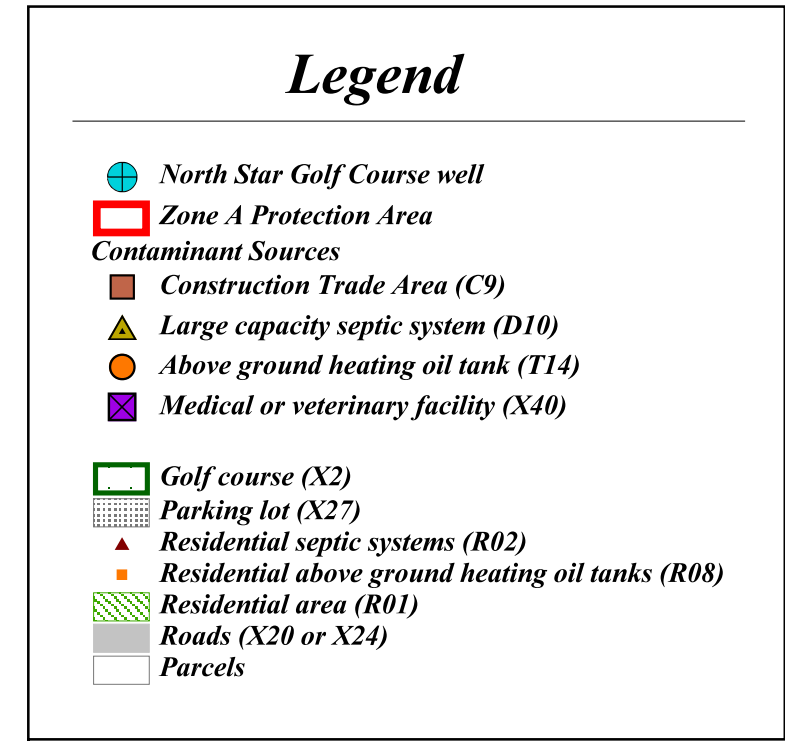
PWSID 313796.001

| <i>Contaminant Source Type</i> | <i>Contaminant Source ID</i> | <i>CS ID tag</i> | <i>Zone</i> | <i>Risk Ranking for Analysis</i> | <i>Map Number</i> | <i>Comments</i> |
|---|------------------------------|------------------|-------------|----------------------------------|-------------------|--|
| Septic systems (serves one single-family home) | R02 | | A | Low | 2 | Approximately 76 (approximated by number of parcels designated as residential) |
| Residential Areas | R01 | | A | Low | 2 | Approximately 150 acres |
| Highways and roads, dirt/gravel | X24 | | A | Low | 2 | 11 gravel roads within Zone A |
| Tanks, heating oil, residential (above ground) | R08 | | A | Medium | 2 | Approximately 76 (approximated by number of parcels designated as residential) |
| Septic tank cleaning and servicing | C39 | C39-1 | A | Low | 2 | 935 Highland Street |
| Injection wells (Class V) Large-Capacity Septic System (Drainfield Disposal Method) | D10 | D10-1 | A | Low | 2 | North Star Golf Club |
| Injection wells (Class V) Large-Capacity Septic System (Drainfield Disposal Method) | D10 | D10-2 | A | Low | 2 | 479 Ruth Estates Road |
| Tanks, heating oil, nonresidential (aboveground) | T14 | T14-1 | A | Low | 2 | North Star Golf Club |
| Parking lot | X27 | X27-1 | A | Low | 2 | North Star Golf Club |
| Medical/veterinary facilities (doctor or dentist offices, hospitals, nursing homes) | X40 | X40-1 | A | Low | 2 | 479 Ruth Estates Road |

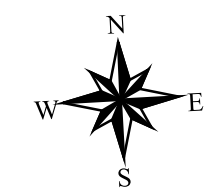
APPENDIX C

North Star Golf Club Drinking Water Protection Area and Potential and Existing Contaminant Sources (Map 2)

North Star Golf Club Drinking Water Protection Area with Potential and Existing Contaminant Sources



PWSID 313796



Map 2

APPENDIX D

Vulnerability Analysis for North Star Golf Club Public Drinking Water Source (Charts 1-8)

Chart 1. Susceptibility of the wellhead - North Star Golf Club

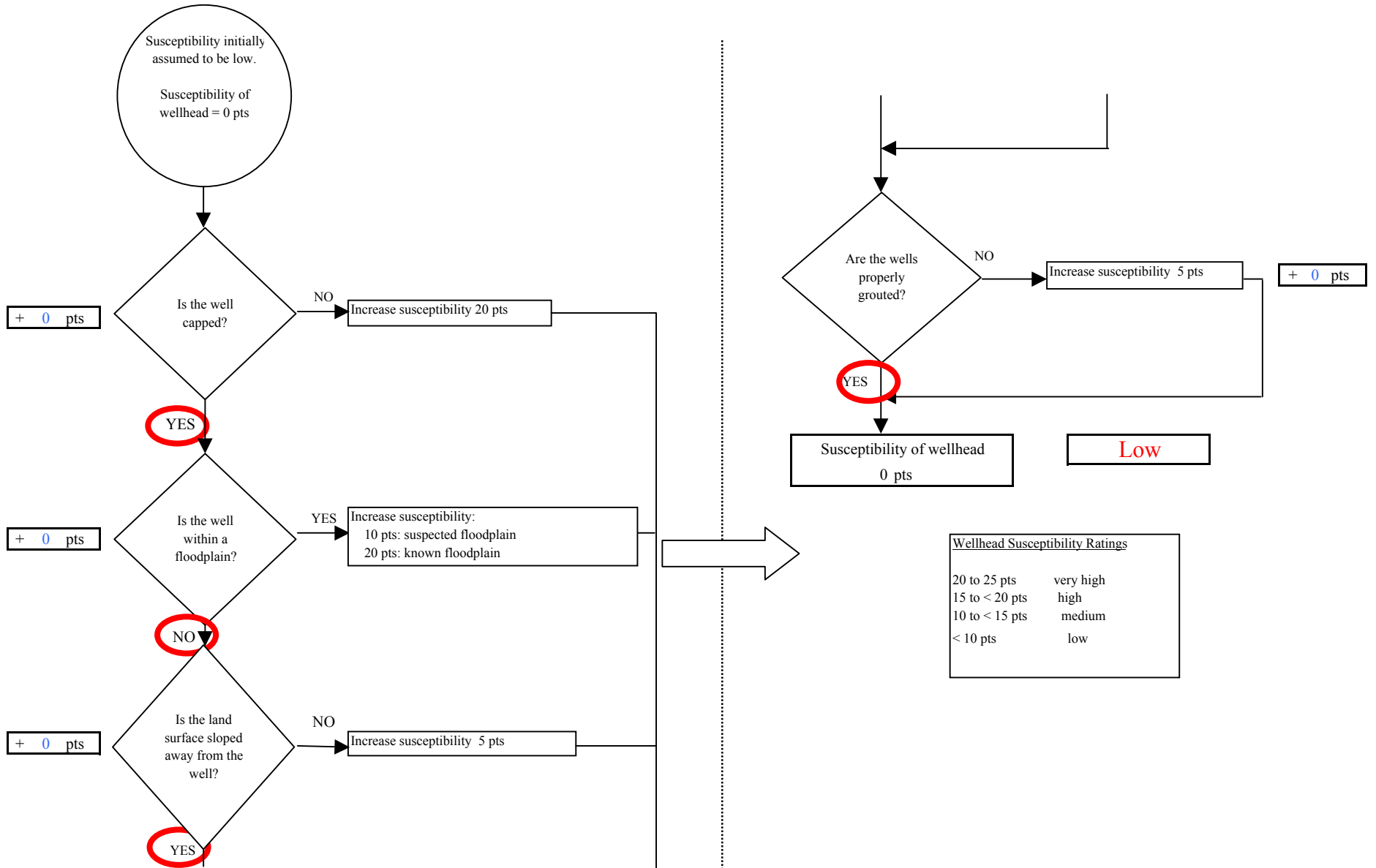


Chart 2. Susceptibility of the aquifer - North Star Golf Club

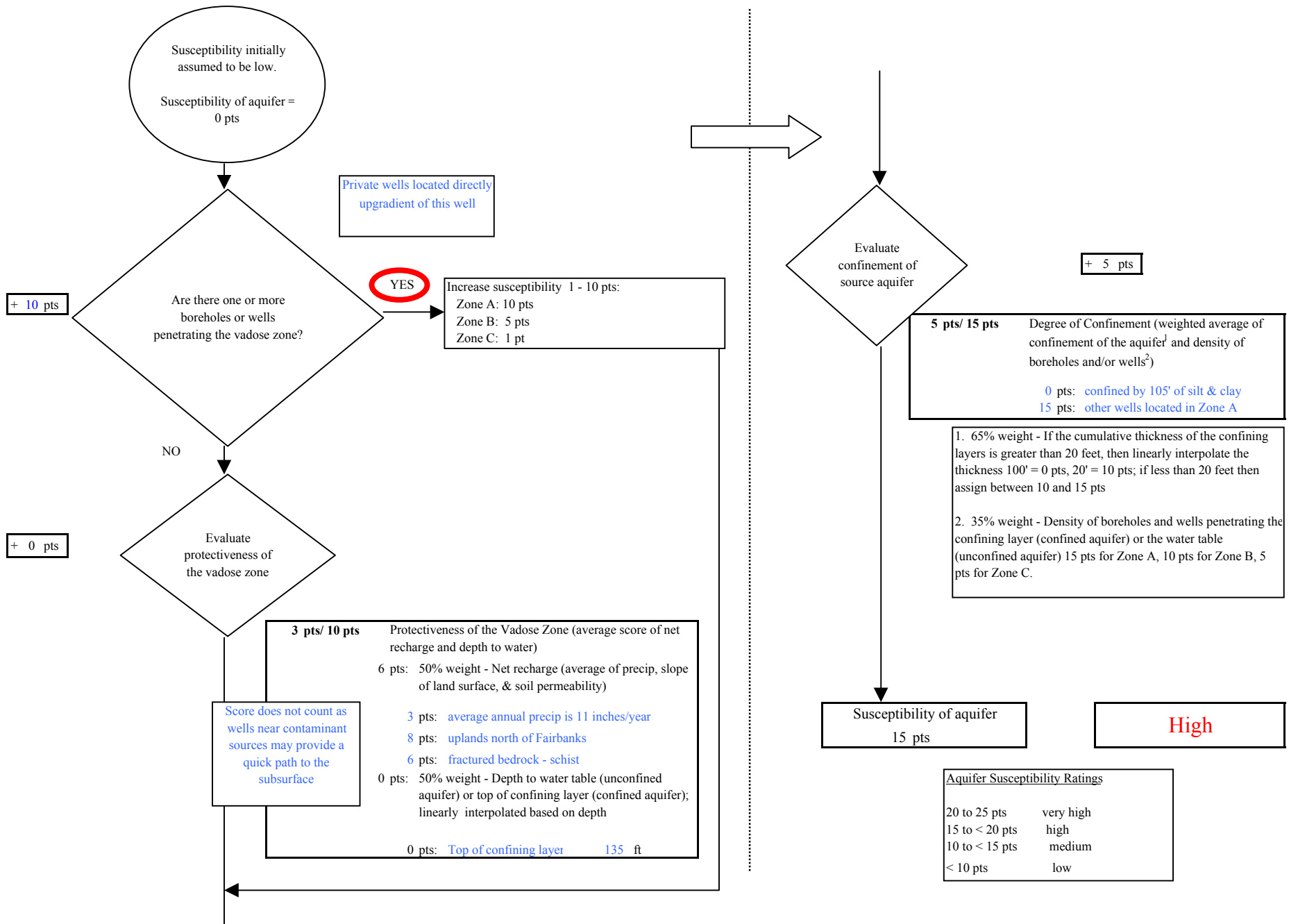
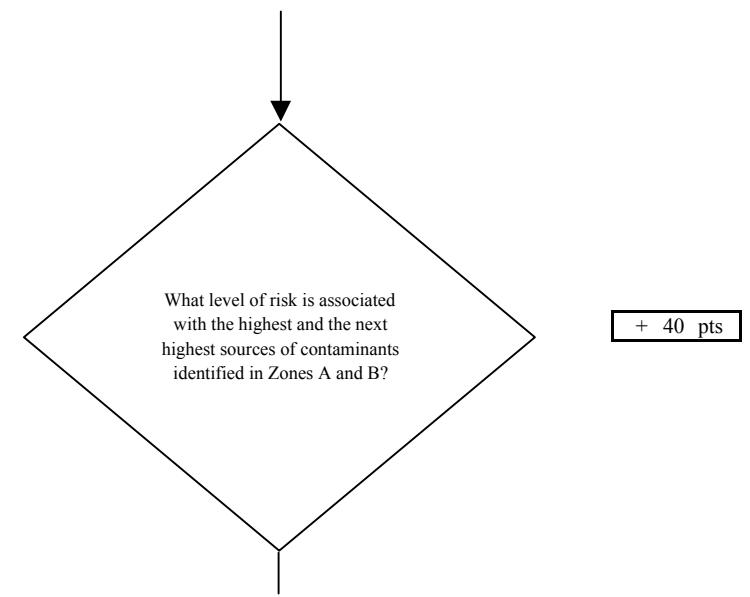
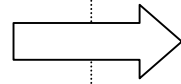
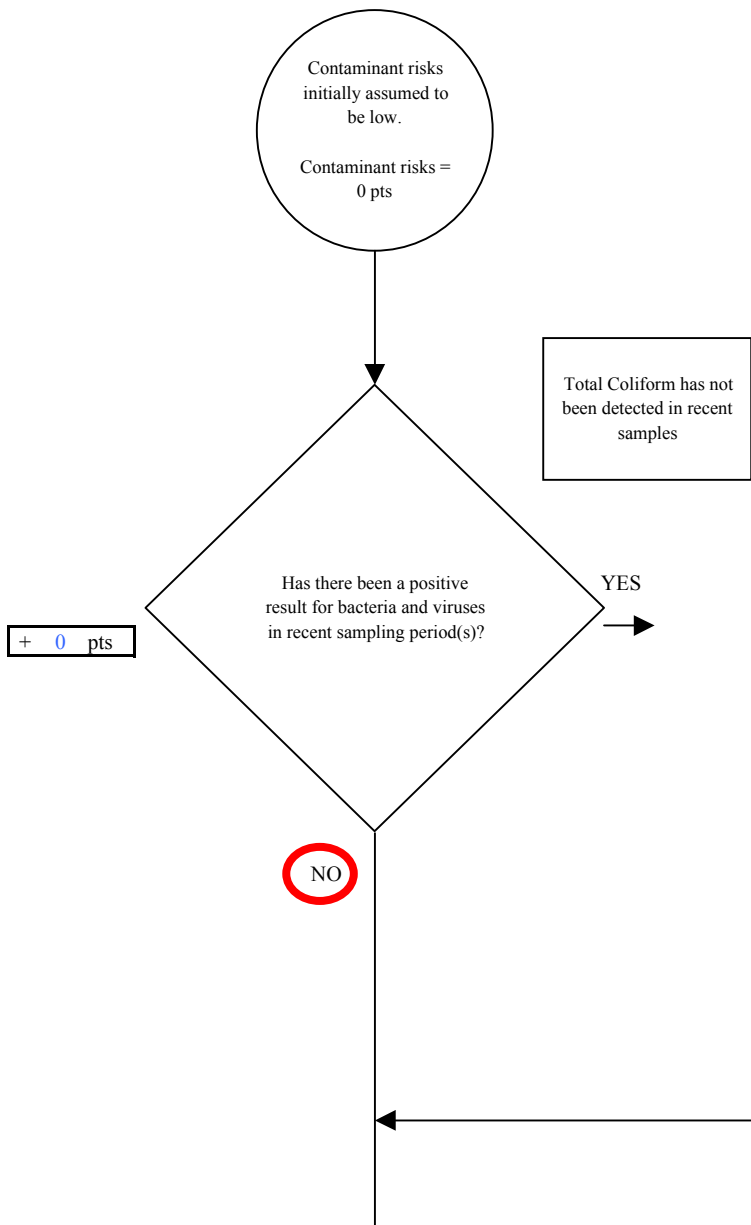


Chart 3. Contaminant risks for North Star Golf Club - Bacteria & Viruses



Risk Rankings for Contaminant Sources Identified in Zones A and B

| | Zone A | Zone B | Total |
|--------------|--------|--------|-------|
| Very High(s) | 0 | 0 | 0 |
| High(s) | 2 | 0 | 2 |
| Medium(s) | 1 | 0 | 1 |
| Low(s) | 81 | 0 | 81 |

| | LOW 10 pts | MEDIUM 20 pts | HIGH 30 pts | VERY HIGH 40 pts |
|-----------|--------------------------|-------------------------|-------------------------|-------------------------|
| LOW | ≥ 10 sources + 10 pts | ≥ 10 sources + 5 pts | ≥ 20 sources + 5 pts | ---- |
| MEDIUM | ---- | ≥ 2 sources + 5 pts | ≥ 5 sources + 5 pts | ≥ 10 sources + 5 pts |
| HIGH | ---- | ---- | ≥ 1 source + 10 pts | ≥ 2 sources + 10 pts |
| VERY HIGH | ---- | ---- | ---- | ≥ 1 source + 10 pts |

Matrix Score 40

Note: Septic systems, sewerlines, and roads are each assigned a risk ranking for each individual contaminant source in the CSI. The VA, however, counts these contaminant sources as a group and assigns a calculated number of either "lows" or "mediums" based on the density.

Chart 3. Contaminant risks for North Star Golf Club - Bacteria & Viruses

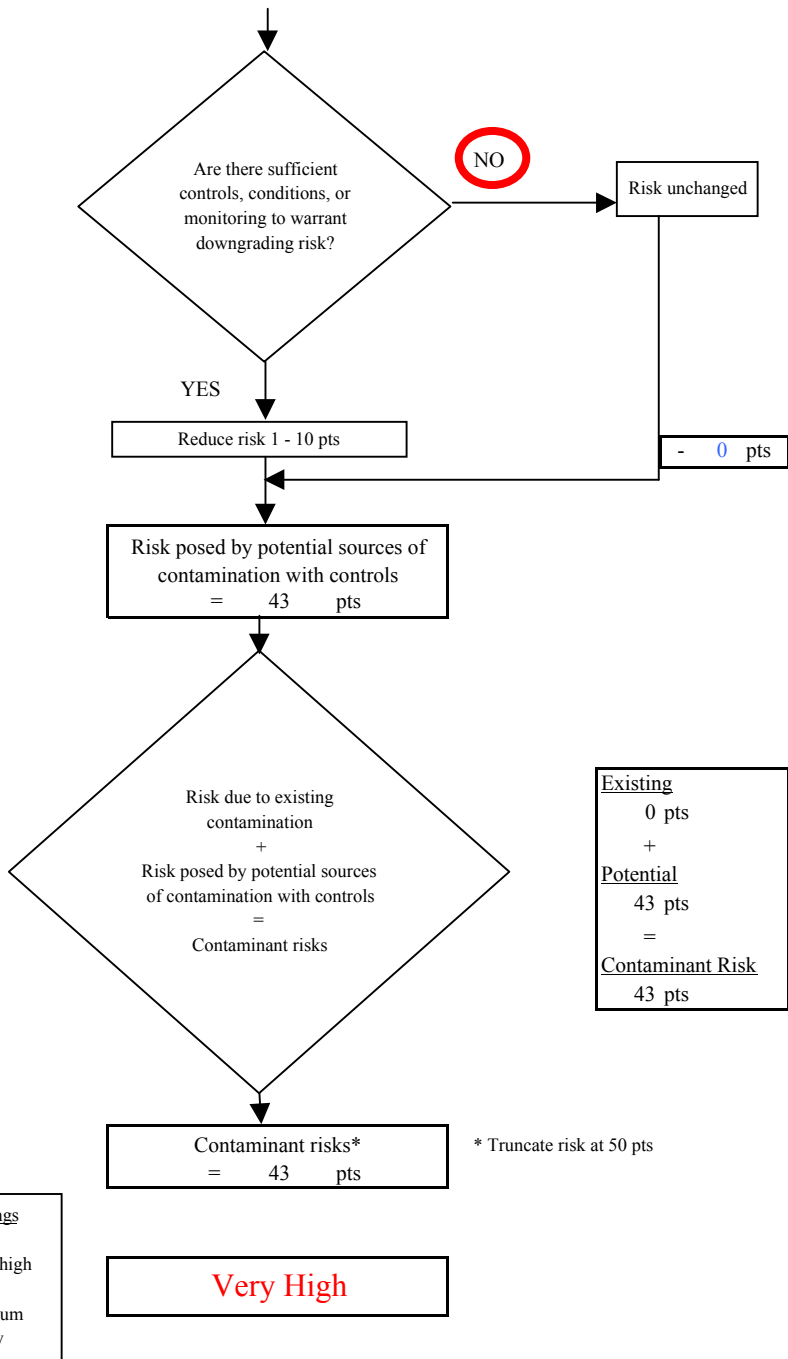
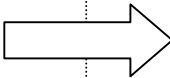
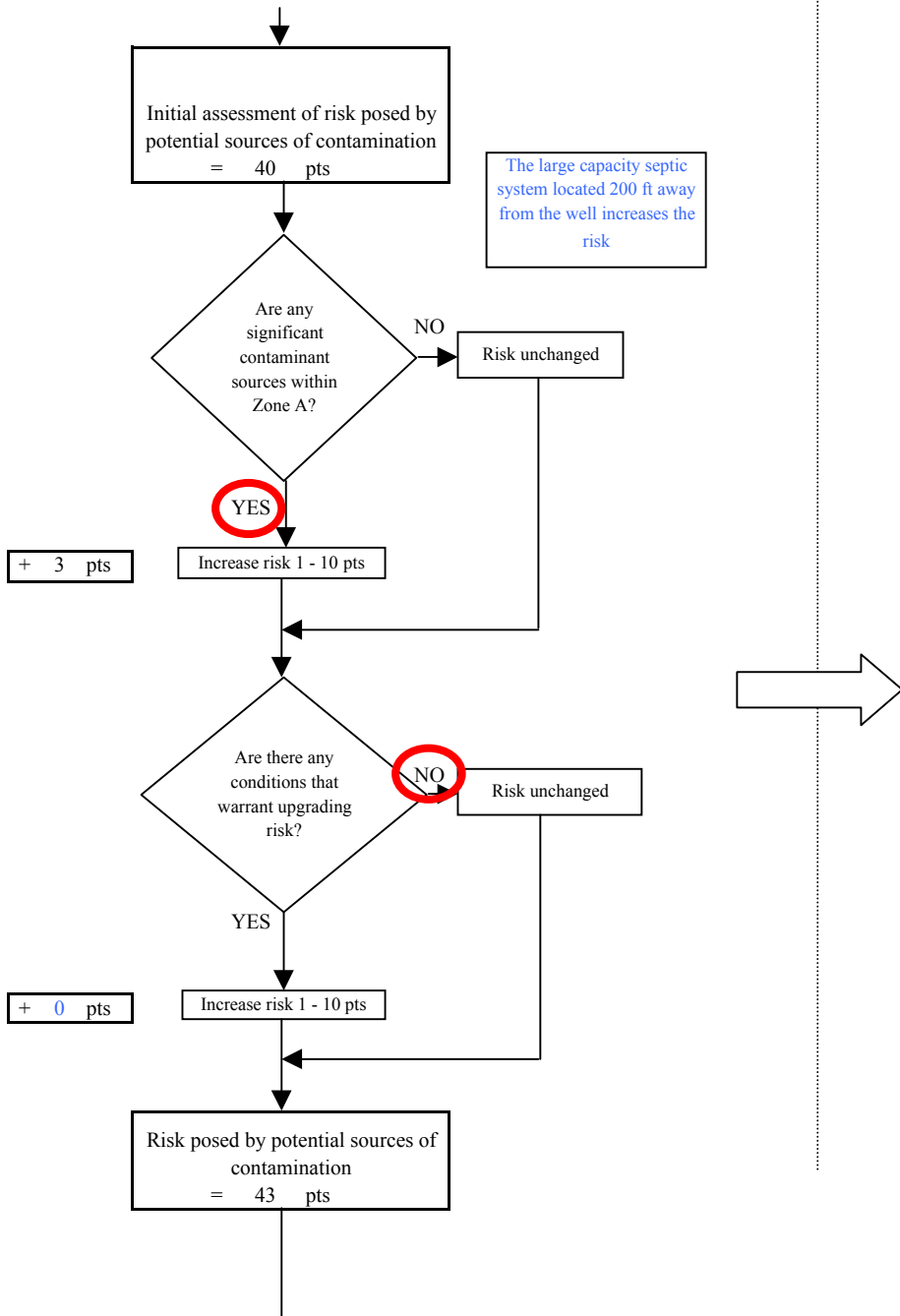


Chart 4. Vulnerability analysis for North Star Golf Club - Bacteria & Viruses

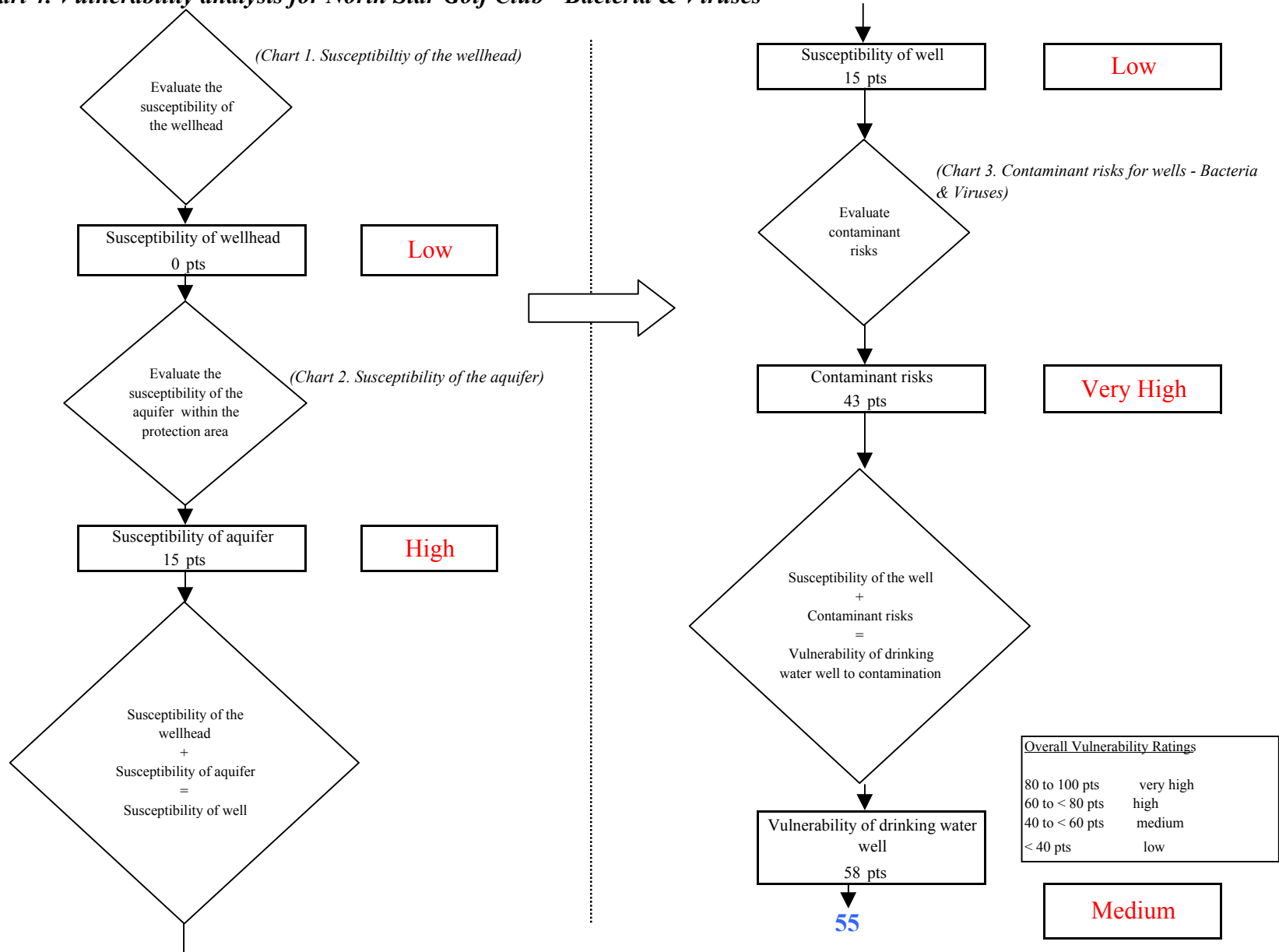


Chart 5. Contaminant risks for North Star Golf Club - Nitrates and Nitrites

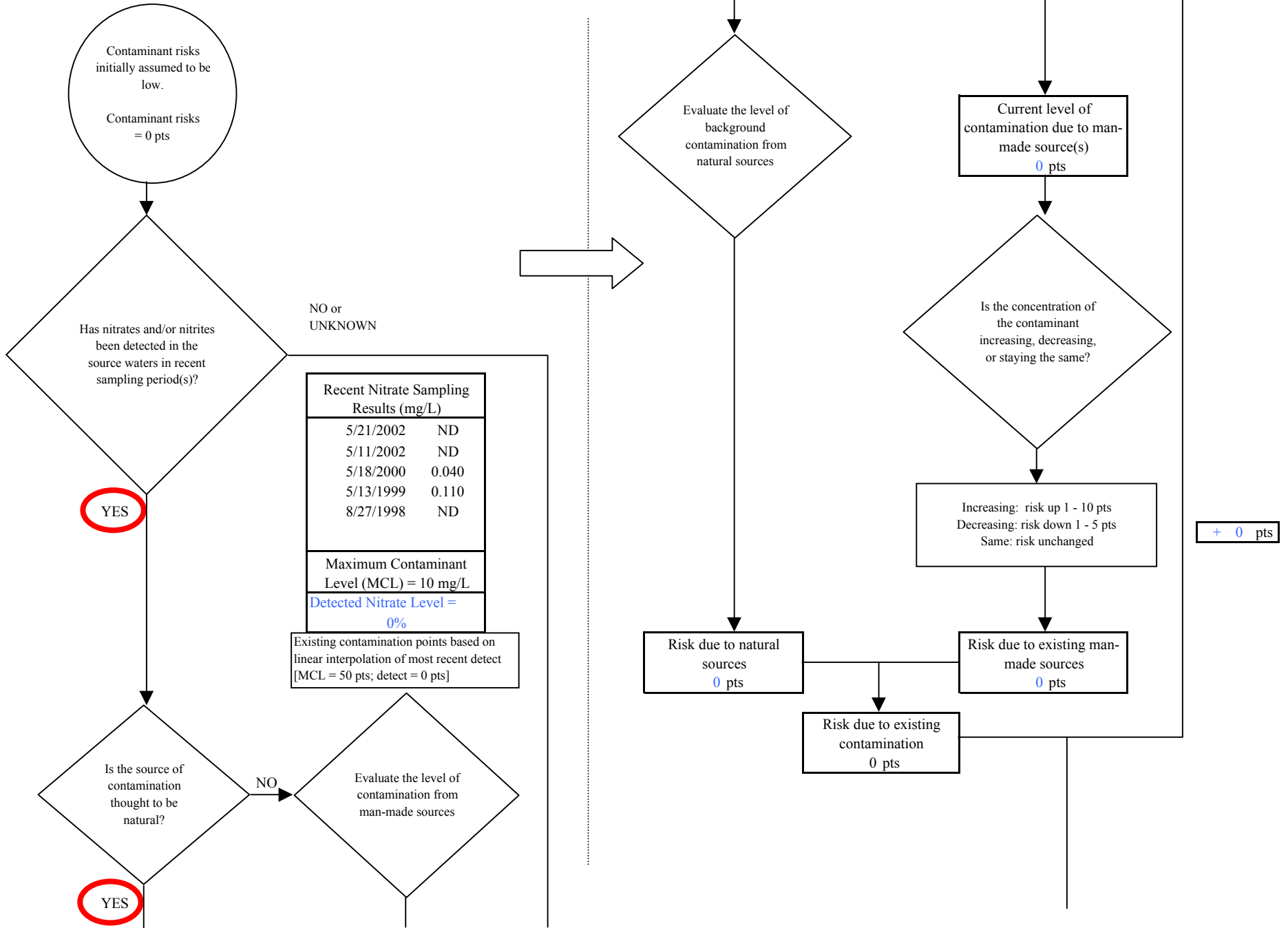
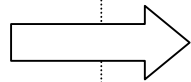
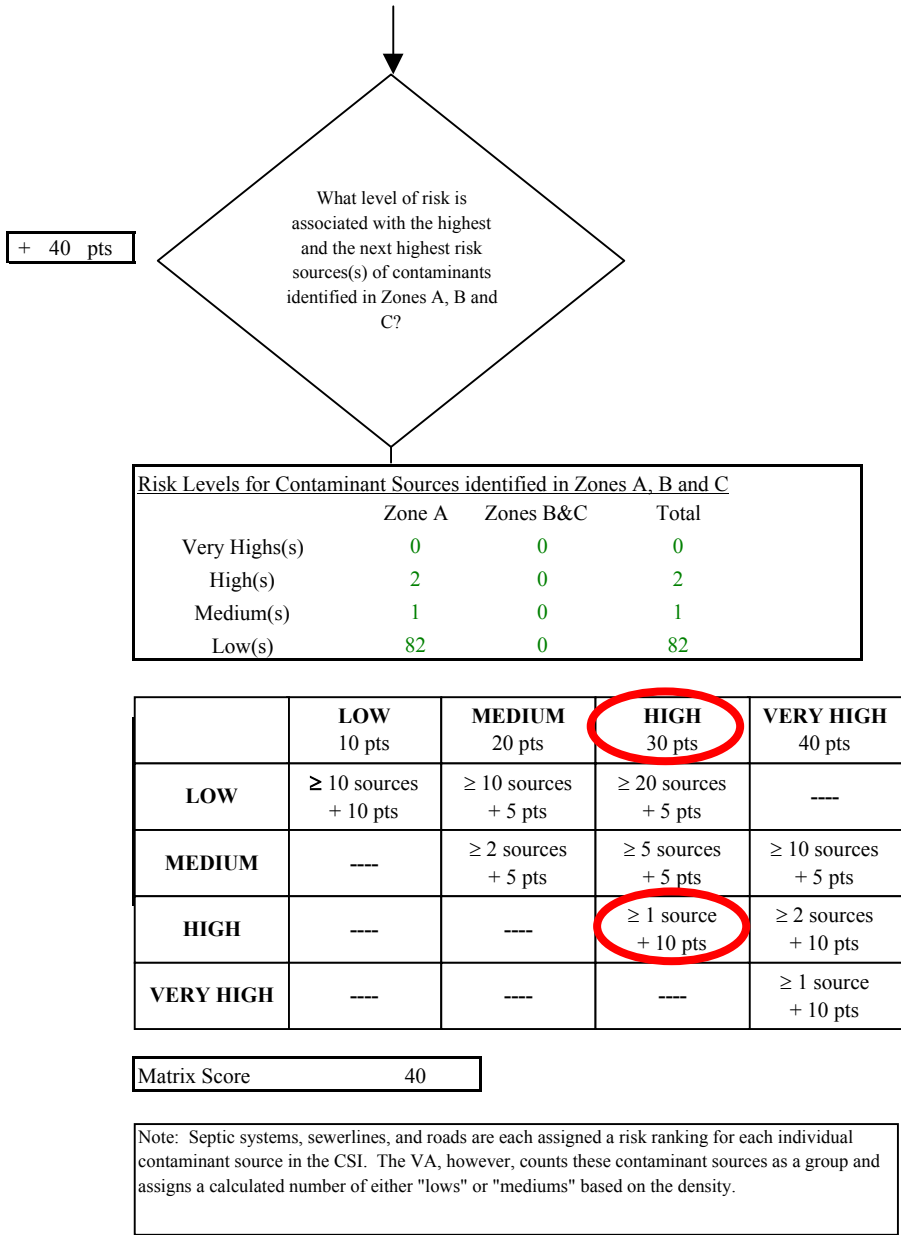


Chart 5. Contaminant risks for North Star Golf Club - Nitrates and Nitrites



The large capacity septic system located 200 ft away from the well increases the risk

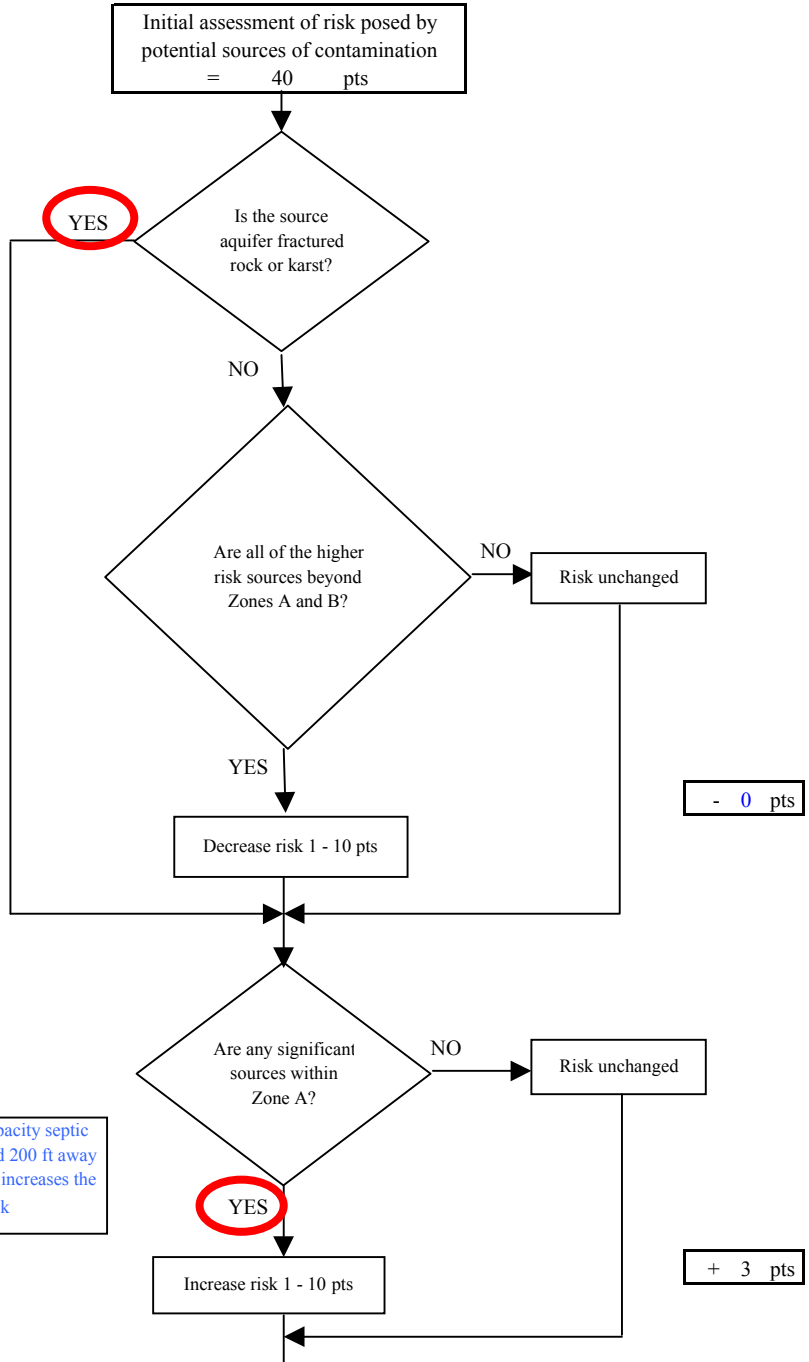


Chart 5. Contaminant risks for North Star Golf Club - Nitrates and Nitrites

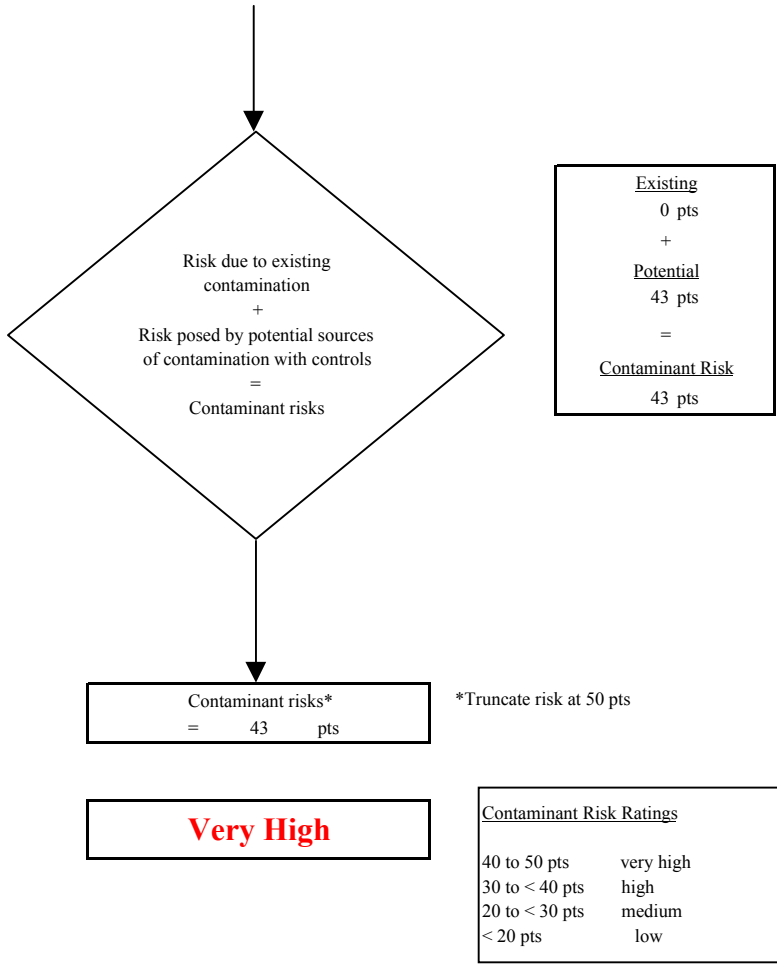
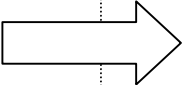
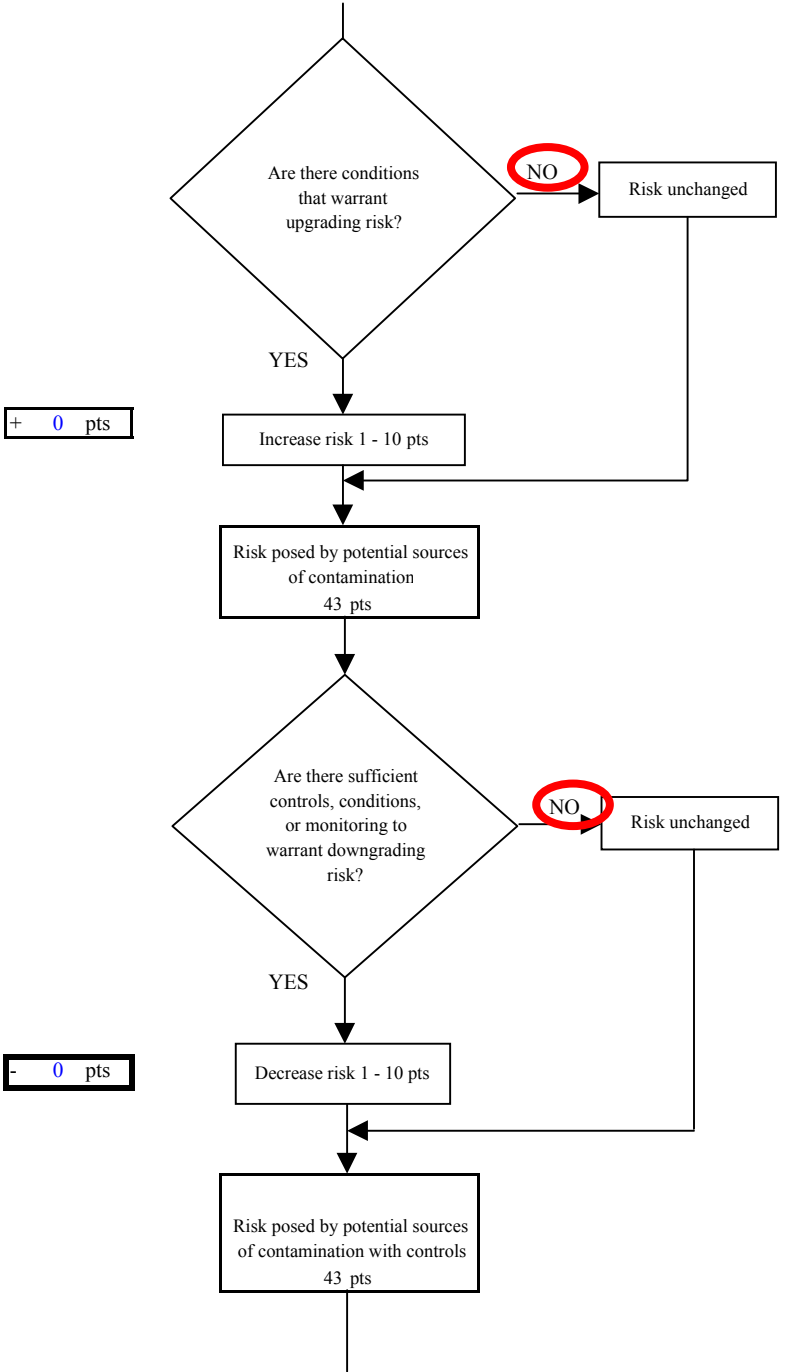


Chart 6. Vulnerability analysis for North Star Golf Club - Nitrates and Nitrites

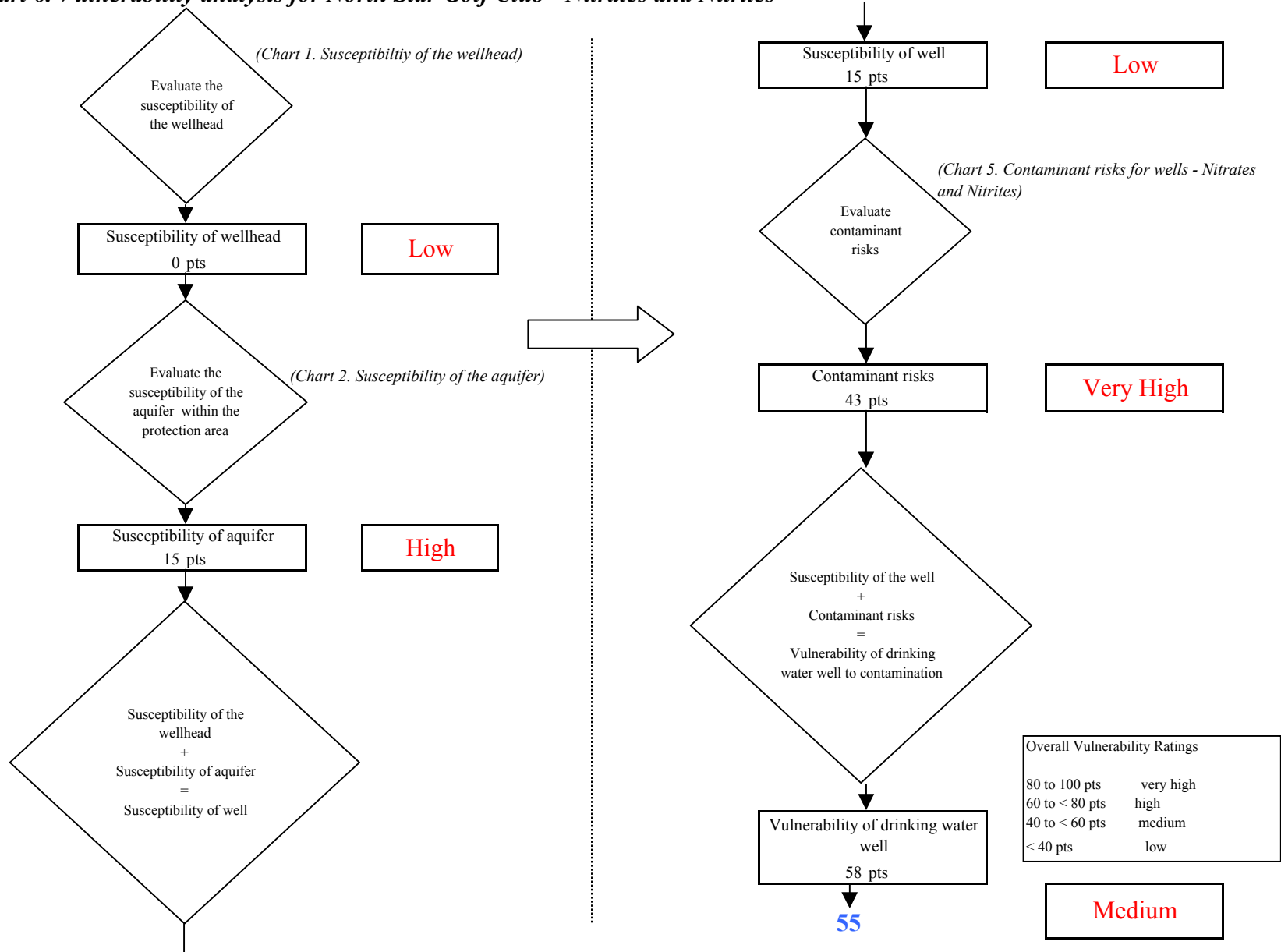


Chart 7. Contaminant risks for North Star Golf Club - Volatile Organic Chemicals

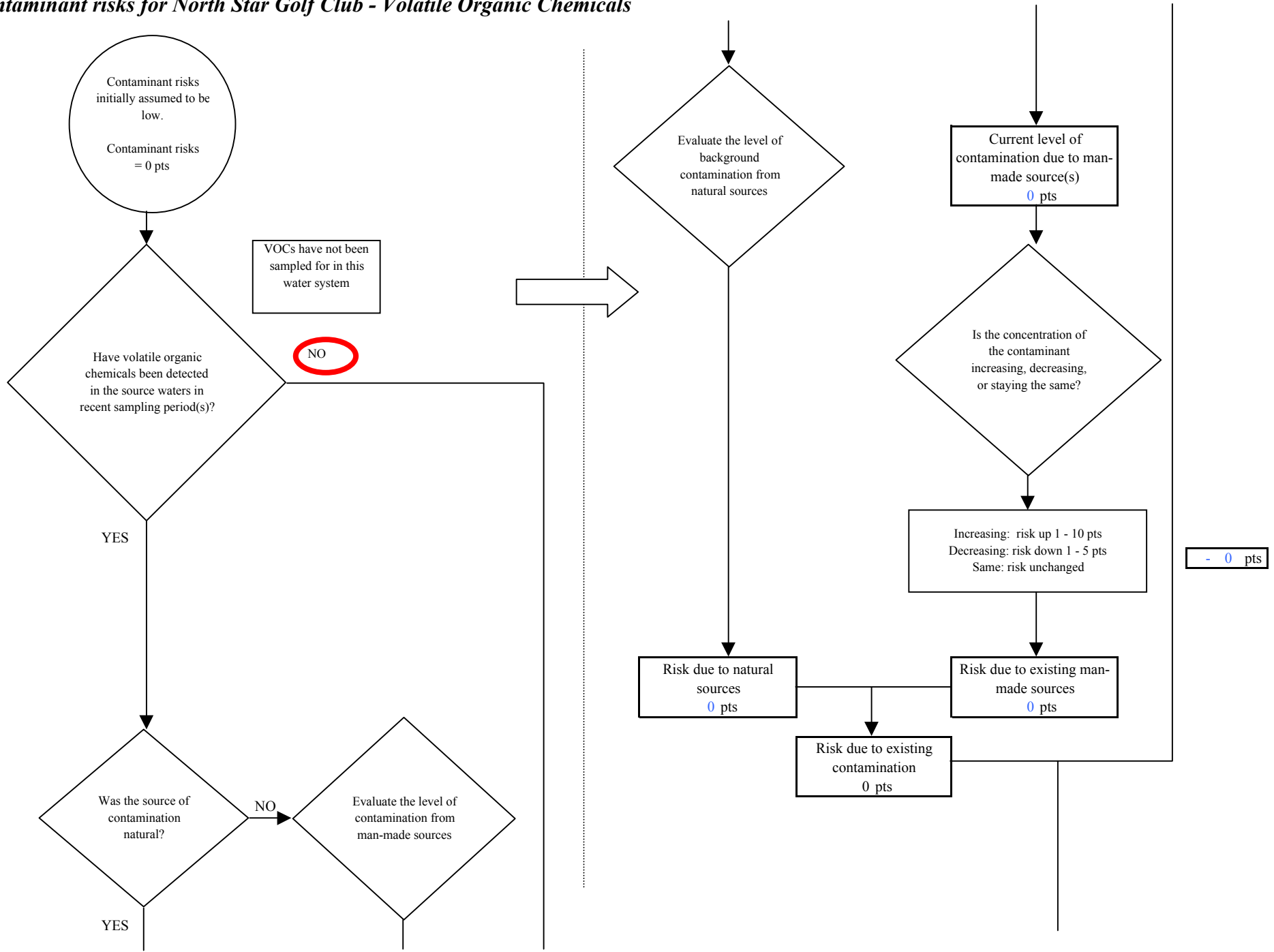
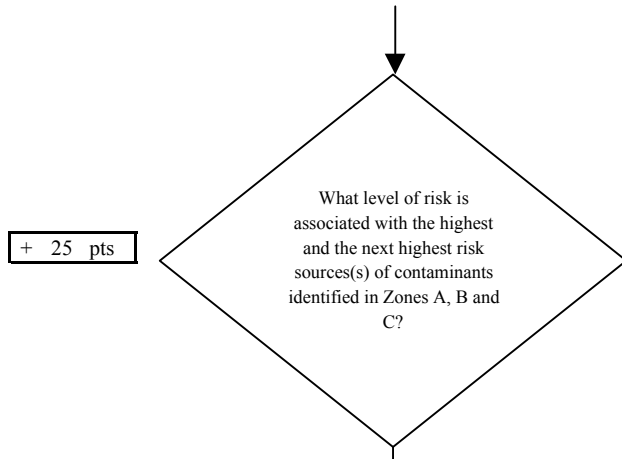


Chart 7. Contaminant risks for North Star Golf Club - Volatile Organic Chemicals



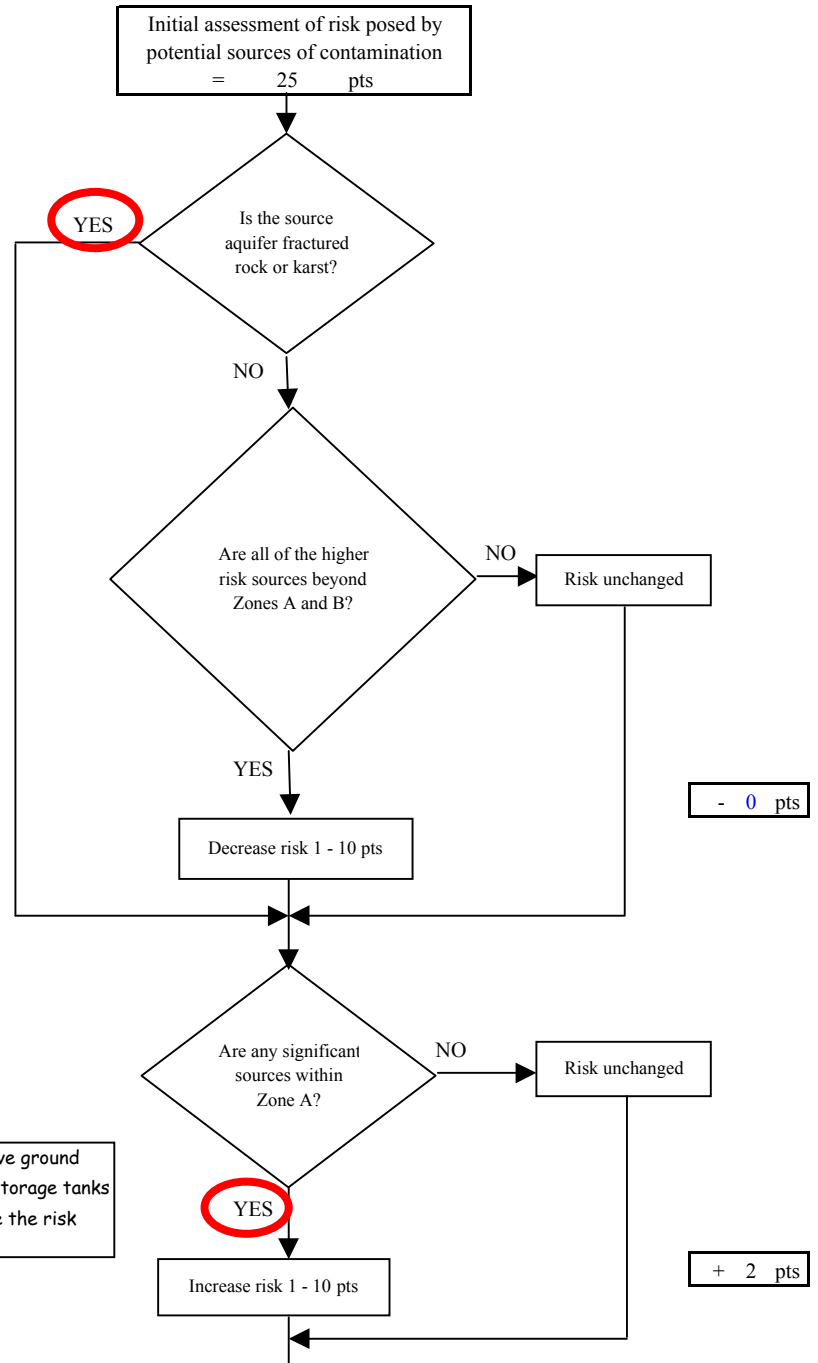
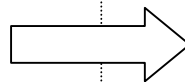
+ 25 pts

| Risk Levels for Contaminant Sources identified in Zones A, B and C | | | |
|--|--------|-----------|-------|
| | Zone A | Zones B&C | Total |
| Very Highs(s) | 0 | 0 | 0 |
| High(s) | 0 | 0 | 0 |
| Medium(s) | 77 | 0 | 77 |
| Low(s) | 14 | 0 | 14 |

| | LOW 10 pts | MEDIUM 20 pts | HIGH 30 pts | VERY HIGH 40 pts |
|-----------|--------------------------|-------------------------|-------------------------|-------------------------|
| LOW | ≥ 10 sources + 10 pts | ≥ 10 sources + 5 pts | ≥ 20 sources + 5 pts | ---- |
| MEDIUM | ---- | ≥ 2 sources + 5 pts | ≥ 5 sources + 5 pts | ≥ 10 sources + 5 pts |
| HIGH | ---- | ---- | ≥ 1 source + 10 pts | ≥ 2 sources + 10 pts |
| VERY HIGH | ---- | ---- | ---- | ≥ 1 source + 10 pts |

Matrix Score 25

Note: Septic systems, sewerlines, and roads are each assigned a risk ranking for each individual contaminant source in the CSI. The VA, however, counts these contaminant sources as a group and assigns a calculated number of either "lows" or "mediums" based on the density.



- 0 pts

+ 2 pts

Chart 7. Contaminant risks for North Star Golf Club - Volatile Organic Chemicals

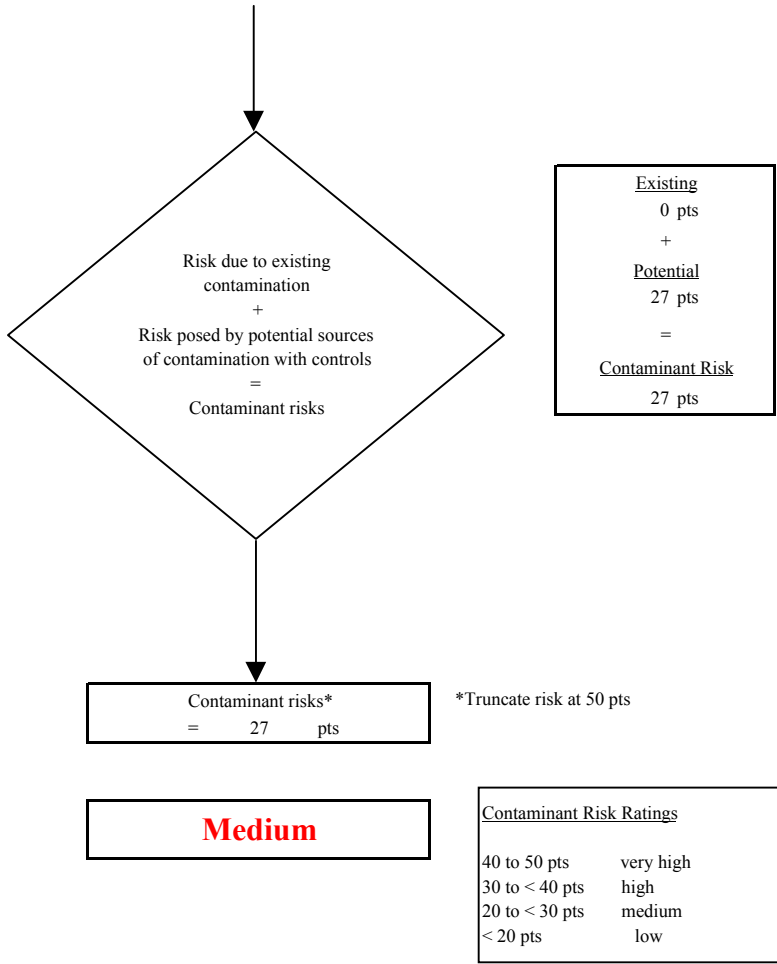
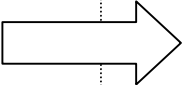
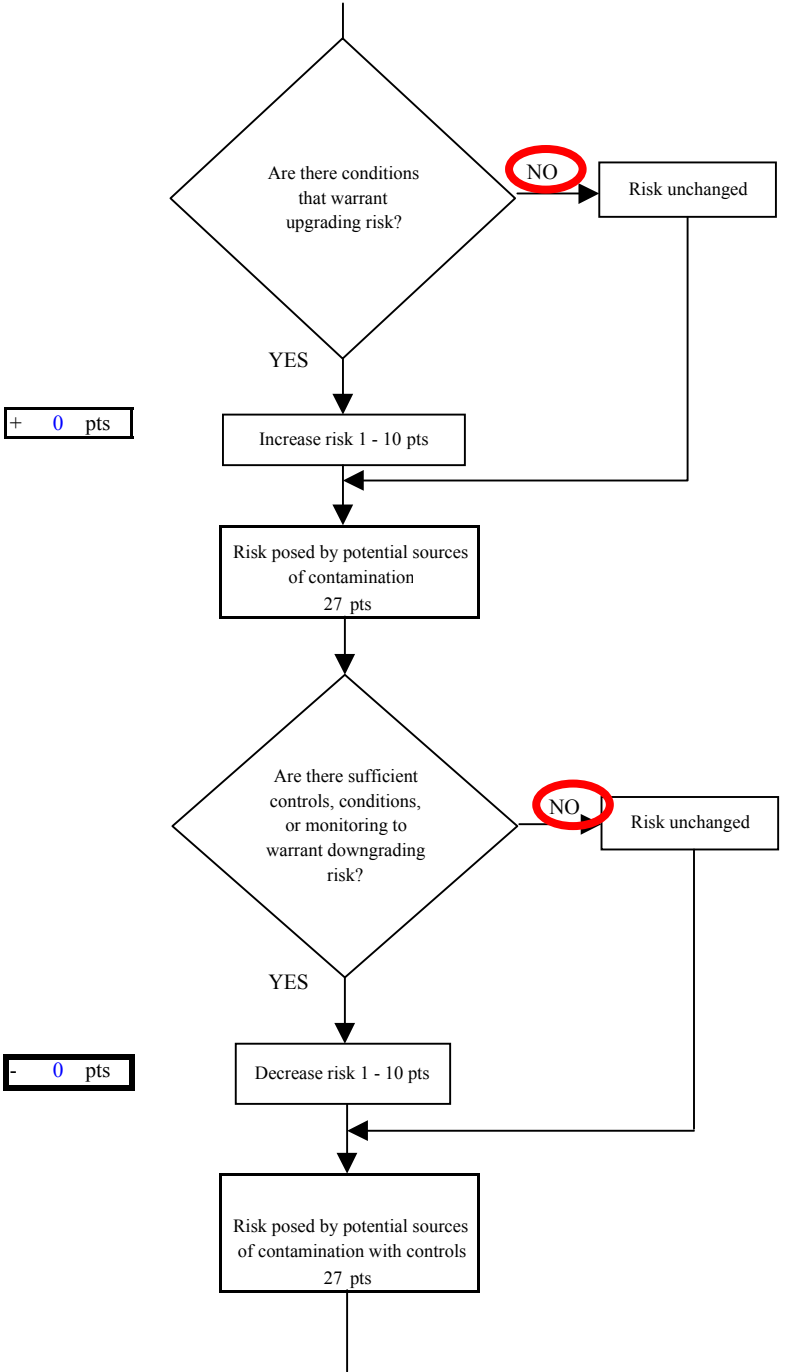


Chart 8. Vulnerability analysis for North Star Golf Club - Volatile Organic Chemicals

