



Source Water Assessment

A Hydrogeologic Susceptibility and Vulnerability Assessment for Lower Chena Dome Trailhead Drinking Water System, Fairbanks Area, Alaska PWSID 311875

March 2004

DRINKING WATER PROTECTION PROGRAM REPORT Report 1427
Alaska Department of Environmental Conservation

Source Water Assessment for Lower
Chena Dome Trailhead Drinking Water
System
Fairbanks Area, Alaska
PWSID 311875

March 2004

DRINKING WATER PROTECTION PROGRAM REPORT Report 1427

The Drinking Water Protection Program (DWPP) is producing Source Water Assessments in compliance with the Safe Drinking Water Act Amendments of 1996. Each assessment includes a delineation of the source water area, an inventory of potential and existing contaminant sources that may impact the water, a risk ranking for each of these contaminants, and an evaluation of the potential vulnerability of these drinking water sources.

These assessments are intended to provide public water systems owners/operators, communities, and local governments with the best available information that may be used to protect the quality of their drinking water. The assessments combine information obtained from various sources, including the U.S. Environmental Protection Agency, Alaska Department of Environmental Conservation (ADEC), public water system owners/operators, and other public information sources. The results of this assessment are subject to change if additional data becomes available. It is anticipated this assessment will be updated every five years to reflect any changes in the vulnerability and/or susceptibility of public drinking water source. If you have any additional information that may affect the results of this assessment, please contact the Program Coordinator of DWPP, (907) 269-7521.

CONTENTS

	Page		Page
Executive Summary	1	Inventory of Potential and Existing Contaminant Sources	1
Lower Chena Dome Trailhead Public Drinking Water System	1	Ranking of Contaminant Risks	2
Lower Chena Dome Trailhead Protection Area	1	Vulnerability of Lower Chena Dome Trailhead Drinking Water System	2
		References	5

TABLES

TABLE	1. Definition of Zones	2
	2. Susceptibility	3
	3. Contaminant Risks	3
	3. Overall Vulnerability	4

APPENDICES

APPENDIX	A. Lower Chena Dome Trailhead Drinking Water Protection Area (Map 1)	
	B. Contaminant Source Inventory for Lower Chena Dome Trailhead (Table 1)	
	C. Lower Chena Dome Trailhead Drinking Water Protection Area and Potential and Existing Contaminant Sources (Map 2)	
	D. Vulnerability Analysis for Contaminant Source Inventory and Risk Ranking for Lower Chena Dome Trailhead Public Drinking Water Source (Charts 1 – 8)	

Source Water Assessment for Lower Chena Dome Trailhead Source of Public Drinking Water, Fairbanks Area, Alaska

Drinking Water Protection Program Alaska Department of Environmental Conservation

EXECUTIVE SUMMARY

This source water assessment provides an evaluation of the vulnerability of the public water system serving the Lower Chena Dome Trailhead to potential contamination. This Class B (non-community) water system consists of a hand pump style well in Lower Chena Dome Trailhead near the end of Chena Hot Springs Road east of Two Rivers, Alaska. The well received a natural susceptibility rating of **Very High**. This rating is a combination of a susceptibility rating of **Very High** for the actual wellhead and a **High** rating for the aquifer in which the well is drawing water from. No potential sources of contamination were identified for the Lower Chena Dome Trailhead public water system. Contaminant sources are considered as sources of bacteria and viruses, nitrates and/or nitrites, and volatile organic chemicals. Combining the natural susceptibility of the well with the contaminant risk, the public water system for Lower Chena Dome Trailhead received an overall vulnerability rating of **Medium** for all three contaminant categories: bacteria and viruses, nitrates and/or nitrites, and volatile organic chemicals.

LOWER CHENA DOME TRAILHEAD PUBLIC DRINKING WATER SYSTEM

Lower Chena Dome Trailhead public water system is a Class B (non-community) water system. The system consists of a hand pump style well along Chena Hot Springs Road east of Two Rivers, Alaska (T2N, R7E, Section 12) (See Map 1 of Appendix A). Two Rivers is located northeast of the town of Fairbanks which is located in the Fairbanks North Star Borough near the center of Alaska (Please see the inset of Map 1 in Appendix A for location). The Borough's current population is 82,840 making it the second-largest population center in the state (ADCED, 2002). Communities located within the Borough include: College, Eielson Air Force Base, Ester, Fairbanks, Fox, Harding Lake, Moose Creek, North Pole, Pleasant Valley, Salcha, and Two Rivers.

The Fairbanks area includes two distinct topographic areas: the alluvial plain between the Tanana River and the Chena River, and the uplands north and east of this alluvial plain. The Lower Chena Dome Trailhead water system is located in the uplands northeast of the alluvial

plain at an elevation of approximately 1,000 feet above sea level.

According to the well log for this water system, the depth of well is 35 feet below the ground surface and is screened in the fractured bedrock. Bedrock in this area is predominantly a metamorphosed marine mud deposit, called a pelitic schist. The schist is locally intruded by granitic rocks – granite and quartz diorite. Discontinuous permafrost (perennially frozen areas) is also common in this area. Areas with discontinuous permafrost may locally affect the ground water flow directions.

Groundwater in the uplands is recharged by local precipitation. Outflow of ground water in the uplands primarily occurs two ways. In areas under artesian pressure (pressure caused by overlying permafrost), water can flow to the surface through thawed conduits within the permafrost. Otherwise groundwater will flow under the permafrost (if present) and out to the groundwater beneath the adjacent flood plain or creek valley (Nelson, 1978).

This system consists of one hand-pump style water well serving about one non-residents during the summer months.

LOWER CHENA DOME TRAILHEAD DRINKING WATER PROTECTION AREA

The pathways most likely for surface contamination to reach the groundwater are identified as the first step in determining a drinking water system's risk. These areas are determined by looking at the characteristics of the soil, groundwater, aquifer, and well.

The most probable area for contamination to reach the drinking water well is the area that contributes water to the well, the groundwater capture zone. The groundwater capture zone is located in the area circling the well (the area influenced by pumping) and also the area of the water table upgradient of the well, usually forming a parabola shape.

An outline of the immediate watershed was used to determine the size and shape of the protection area for the Lower Chena Dome Trailhead. Available geology was also considered to take into account any

uncertainties in groundwater flow and aquifer characteristics to arrive at a meaningful protection area.

Because of uncertainties and changing site conditions, a factor of safety is added to the groundwater capture zone to form the drinking water protection area for the well.

The protection areas established for wells are usually separated into four zones, limited by the watershed. These zones correspond to times-of-travel (TOT) of the water moving through the aquifer to the well (plus the factor of safety). Because the rate at which water travels through fractured bedrock is unknown but usually relatively fast, the protection area for the Lower Chena Dome consists only of Zone A.

The following is a summary of the four zones for wells and the calculated time-of-travel for each:

Table 1. Definition of Zones

Zone	Definition
A	¼ the distance for the 2-yr. time-of-travel
B	Less than 2 years time-of-travel
C	Less than 5 years time-of-travel
D	Less than 10 years time-of-travel

The time of travel for contaminants within the water varies with their unique physical and chemical characteristics.

The drinking water protection area outlined for the Lower Chena Dome Trailhead on Map 1 of Appendix A will serve as the focus for voluntary protection efforts.

INVENTORY OF POTENTIAL AND EXISTING CONTAMINANT SOURCES

The Drinking Water Protection Program (DWPP) has completed an inventory of potential and existing sources of contamination within the Lower Chena Dome Trailhead protection area. This inventory was completed through a search of agency records and other publicly available information. Potential drinking water contaminants are found within agricultural, residential, commercial, and industrial areas, but can also occur within areas that have little or no development.

For the basis of all Class B public water system assessments, three categories of drinking water contaminants were inventoried. They include:

- Bacteria and viruses;
- Nitrates and/or nitrites;
- Volatile organic chemicals

No potential sources of contamination were identified in the protection area.

RANKING OF CONTAMINANT RISKS

Once the potential and existing sources of contamination have been identified, they are each assigned a ranking according to what type and level of risk they represent. Ranking of contaminant risks for a “potential” or “existing” source of contamination is a combination of toxicity and volume associated with that source. Rankings include:

- Low;
- Medium;
- High; and
- Very High.

Bacteria and Viruses are only inventoried in Zones A and B because of their short life span. Only “Very High” and “High” rankings are inventoried within the outer Zone D due to the probability of contaminant dilution by the time the contaminants get to the well.

VULNERABILITY OF LOWER CHENA DOME TRAILHEAD DRINKING WATER SYSTEM

Vulnerability of a drinking water source to contamination is a combination of two factors:

- Natural susceptibility; and
- Contaminant risks.

Appendix D contains eight charts, which together form the ‘Vulnerability Analysis’ for a source water assessment for a public drinking water source. Chart 1 analyzes the ‘Susceptibility of the Wellhead’ to contamination by looking at the construction of the well and its surrounding area. Chart 2 analyzes the ‘Susceptibility of the Aquifer’ to contamination by looking at the properties of the aquifer and the presence of other wells or boreholes in the area. Chart 3 analyzes ‘Contaminant Risks’ for the drinking water source with respect to Bacteria and Viruses. The ‘Contaminant Risks’ portion of the analysis considers potential sources of contaminants as well as a review of the water system’s contaminant sample results. Lastly, Chart 4 combines the results of the first three charts to produce the ‘Vulnerability Analysis for Bacteria and Viruses’. Charts 5 through 8 contain the Contaminant Risks and Vulnerability Analyses for nitrates and nitrites and volatile organic chemicals, respectively.

A score for the Natural Susceptibility is reached by considering the properties of the well and the aquifer.

Susceptibility of the Wellhead (0 – 25 Points)
(Chart 1 of Appendix D)

+

Susceptibility of the Aquifer (0 – 25 Points)
(Chart 2 of Appendix D)

=

Natural Susceptibility (Susceptibility of the Well)
(0 – 50 Points)

A ranking is assigned for the Natural Susceptibility according to the point score:

Natural Susceptibility Ratings	
40 to 50 pts	Very High
30 to < 40 pts	High
20 to < 30 pts	Medium
< 20 pts	Low

The wellhead for the Lower Chena Dome Trailhead received a Very High Susceptibility rating. The 8/27/99 Sanitary Survey indicated the well is a hand pump design not capable of being capped with a sanitary seal, the land surface is sloped away from the well providing adequate drainage, and the well is not grouted. A sanitary seal prevents potential contaminant from entering the well from the inside while sloping the land surface away from the well and grouting help to prevent potential contaminants from traveling down the outside of the well casing.

The aquifer in the area the Lower Chena Dome Trailhead well is completed in received a High Susceptibility rating. The highly transmissive aquifer material and the high water table in the area allow contaminants to quickly travel downward from the surface with the precipitation and surface water runoff. Other wells in the protection area can also provide a quick path to the aquifer if they are not grouted properly. Table 2 summarizes the Susceptibility scores and ratings for Lower Chena Dome Trailhead.

Table 2. Susceptibility

	Score	Rating
Susceptibility of the Wellhead	25	Very High
Susceptibility of the Aquifer	17	High
Natural Susceptibility	42	Very High

The Contaminant Risk has been derived from an evaluation of the routine sampling results of the water system and the presence of potential sources of contamination. Contaminant risks to a drinking water

source depend on the type and distribution of contaminant sources. Flow charts are used to assign a point score, and ratings are assigned in the same way as for the natural susceptibility:

Contaminant Risk Ratings	
40 to 50 pts	Very High
30 to < 40 pts	High
20 to < 30 pts	Medium
< 20 pts	Low

Table 3 summarizes the Contaminant Risks for each category of drinking water contaminants.

Table 3. Contaminant Risks

Category	Score	Rating
Bacteria and Viruses	0	Low
Nitrates and/or Nitrites	1	Low
Volatile Organic Chemicals	0	Low

Finally, an overall vulnerability score is assigned for each water system by combining each of the contaminant risk scores with the natural susceptibility score:

Natural Susceptibility (0 – 50 points)
+
Contaminant Risks (0 – 50 points)
=
Vulnerability of the
Drinking Water Source to Contamination (0 – 100).

Again, rankings are assigned according to a point score:

Overall Vulnerability Ratings	
80 to 100 pts	Very High
60 to < 80 pts	High
40 to < 60 pts	Medium
< 40 pts	Low

Table 4 contains the overall vulnerability scores (0 – 100) and ratings for each of the three categories of drinking water contaminants. Note: scores are rounded off to the nearest five.

Table 4. Overall Vulnerability

Category	Score	Rating
Bacteria and Viruses	40	Medium
Nitrates and Nitrites	45	Medium
Volatile Organic Chemicals	40	Medium

Bacteria and Viruses

There were no potential sources of contamination identified for bacteria and viruses in the protection area.

Only a small amount of bacteria and viruses are required to endanger public health. Coli forms are found naturally in the environment and although they aren't necessarily a health threat, it is an indicator of other potentially harmful bacteria in the water, more specifically, fecal coli forms and E. coli which only come from human and animal fecal waste (EPA, 2002). Harmful bacteria can cause diarrhea, cramps, nausea, headaches, or other symptoms (EPA, 2002). Routine sampling has not detected coli forms in the water.

After combining the contaminant risk for bacteria and viruses with the natural susceptibility of the well, the overall vulnerability of the well to contamination is medium.

Nitrates and Nitrites

No potential sources of nitrates and nitrites were identified in the protection area.

Nitrates are very mobile, moving at approximately the same rate as water. Nitrates have not been detected in significant quantities in recent (within the past 5 years) sampling history for Lower Chena Dome Trailhead.

After combining the contaminant risk for nitrates and nitrites with the natural susceptibility of the well, the overall vulnerability of the well to contamination is medium.

Volatile Organic Chemicals

No potential sources of volatile organic chemicals were identified in the protection area.

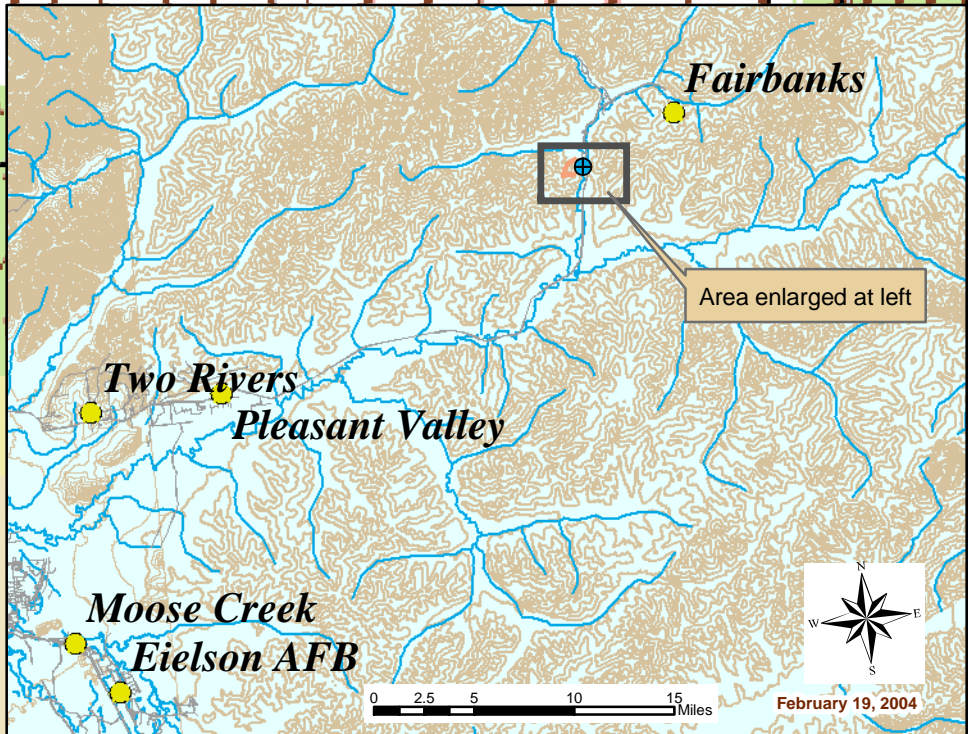
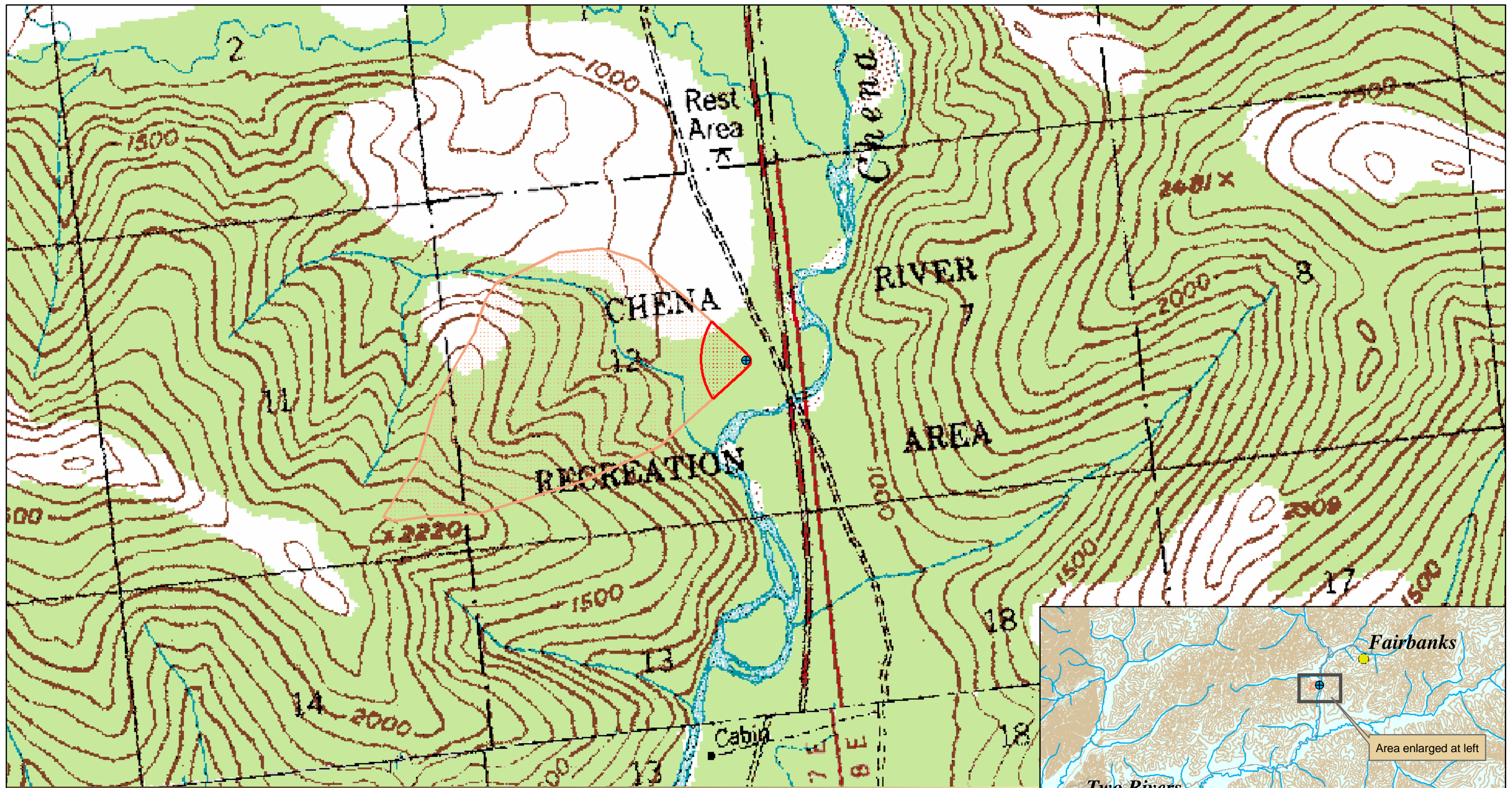
Volatile Organic Chemicals have not been sampled for in this water system. After combining the contaminant risk for volatile organic chemicals with the natural susceptibility of the well, the overall vulnerability of the well to contamination is medium.

REFERENCES

- Alaska Department of Community and Economic Development (ADCED), 2002 [WWW document]. URL http://www.dced.state.ak.us/mra/CF_BLOCK.cfm.
- Anderson, G.S., 1970, Hydrologic reconnaissance of the Tanana basin, central Alaska: U.S. Geological Survey Hydrologic Investigations Atlas HA-319.
- Forbes, R.B. and Weber, F.R., 1981. Bedrock Geologic Map of the Fairbanks Mining District, Alaska. Funded by the State of Alaska, US Geological Survey, and The National Science Foundation.
- Freeze, R.A. and Cherry, J.A., 1979. Groundwater. Prentice-Hall, Englewood Cliffs, NJ.
- Glass, Roy L., Lilly, Micheal R., and Meyer, David F., 1996. Ground-Water Levels in an Alluvial Plain Between the Tanana and Chena Rivers Near Fairbanks, Alaska 1986-93. US Geological Survey Water Resources Investigations Report 96-4060, 39p.
- Nakanishi, Allan S. and Lilly, Micheal R., 1998. Estimate of Aquifer Properties by Numerically Simulating Ground-Water/Surface-Water Interactions, Fort Wainwright, Alaska. US Geological Survey Water Resources Investigations Report 98-4088, 27p.
- Nelson, Gordon L., 1978, Hydrologic Information for Land-Use Planning, Fairbanks Vicinity, Alaska. US Department of the Interior Geological Survey Open File Report 78-959, 47p.
- Pewe, T. L., 1958, Geologic map of the Fairbanks D-2 quadrangle, Alaska: U.S. Geol. Survey Geol. Quad. Map GQ-110, scale 1:63,360.
- United States Environmental Protection Agency (EPA), 2002 [WWW document]. URL <http://www.epa.gov/safewater/mcl.html>.

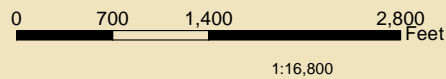
APPENDIX A

Lower Chena Dome Trailhead Drinking Water Protection Area Location Map (Map 1)



Map 1: Little Chena Dome Drinking Water Protection Area

PWSID: 311875



Data Sources:

Parcel, roads - Fairbanks North Star Borough
 Water bodies, railroad - Geographic Data Technology
 Elevation contours - USGS digital elevation models (DEMs)
 Background - USGS 63K Topographic Map

Legend

- Little Chena Dome well
- Zone A
- Zone B
- Towns
- Surface Water
- Roads



APPENDIX B

Contaminant Source Inventory and Risk Ranking for Lower Chena Dome Trailhead (Table 1)

Table 1

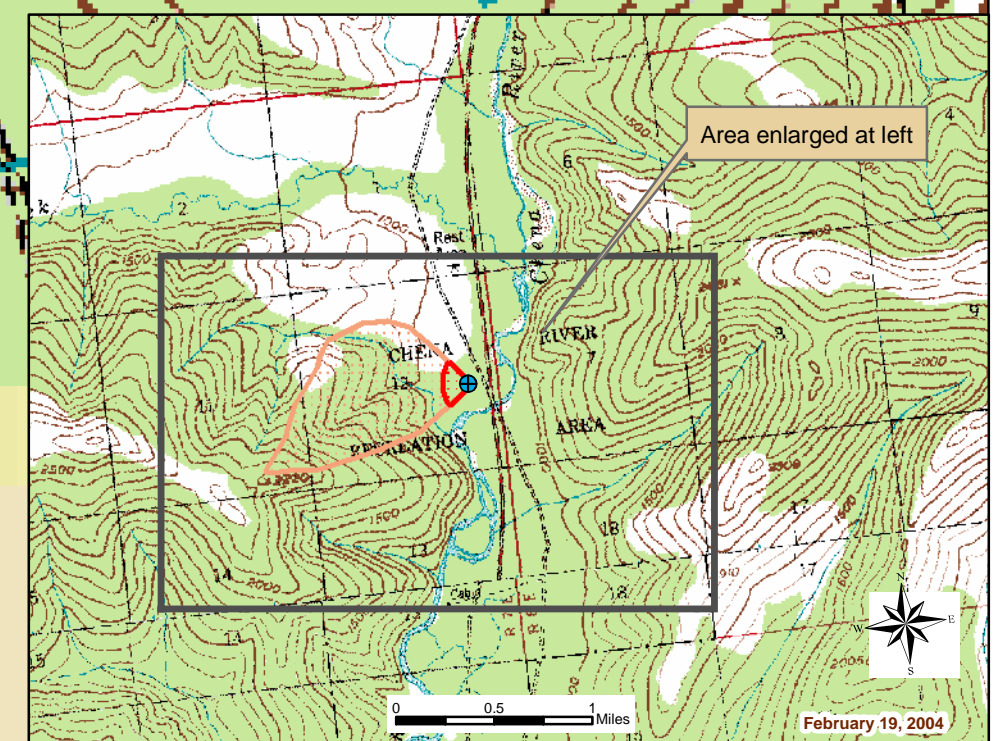
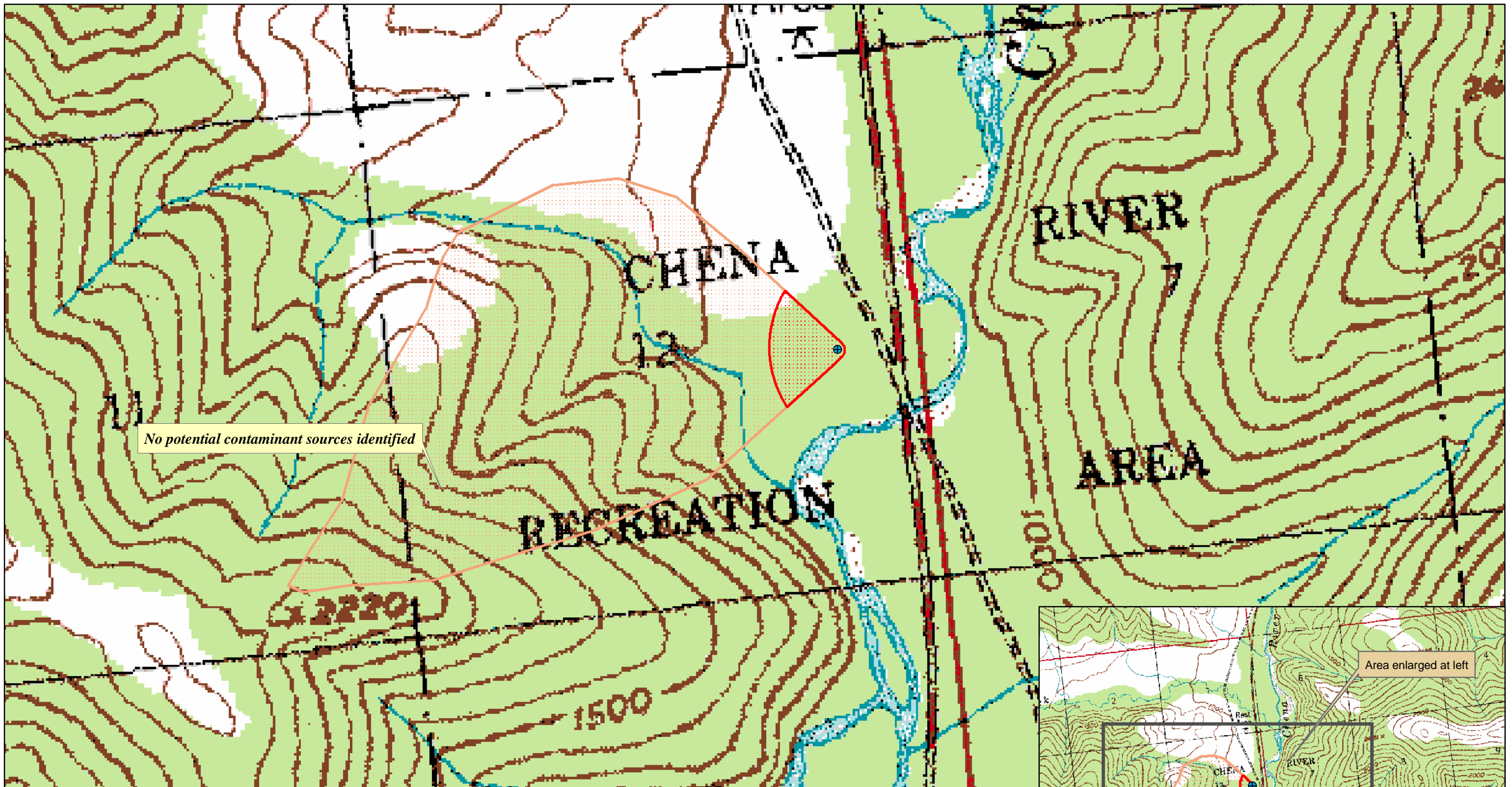
**Contaminant Source Inventory for
AK Div Parks - L. Chena Dome**

PWSID 311875.001

Contaminant Source Type	Contaminant Source ID	CS ID tag	Zone	Map Number	Comments
No potential contaminant sources identified					

APPENDIX C

Lower Chena Dome Trailhead Drinking Water Protection Area and Potential and Existing Contaminant Sources (Map 2)



Map 2: Little Chena Dome Potential Contaminant Sources

PWSID: 311875



Data Sources:

Parcel, roads - Fairbanks North Star Borough
 Water bodies, railroad - Geographic Data Technology
 Elevation contours - USGS digital elevation models (DEMs)

Legend

- Little Chena Dome well
- Zone A
- Zone B

February 19, 2004

APPENDIX D

Vulnerability Analysis for Lower Chena Dome Trailhead Public Drinking Water Source (Charts 1-8)

Chart 1. Susceptibility of the wellhead - Lower Chena Dome Trailhead

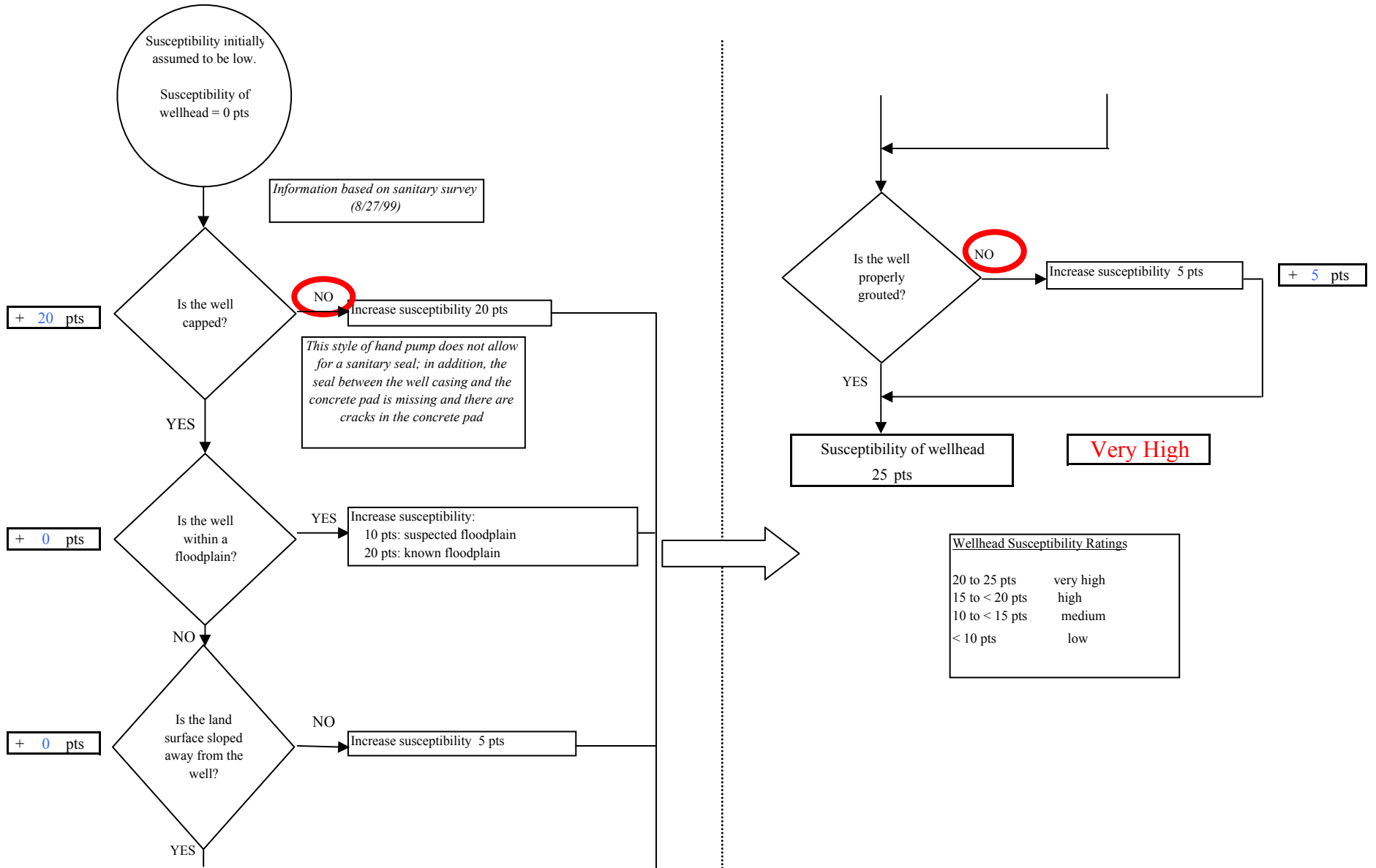


Chart 2. Susceptibility of the aquifer - Lower Chena Dome Trailhead

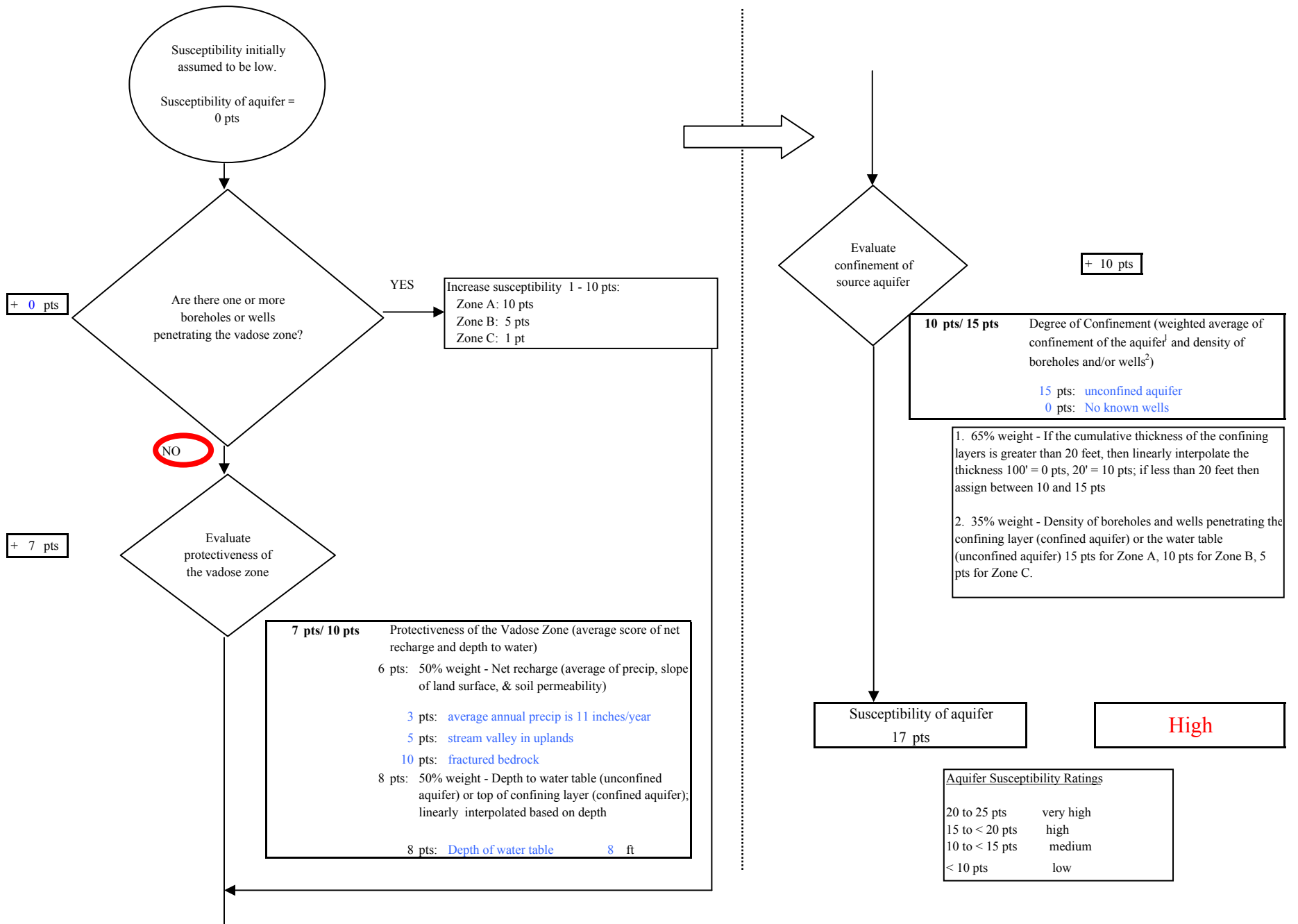


Chart 3. Contaminant risks for Lower Chena Dome Trailhead - Bacteria & Viruses

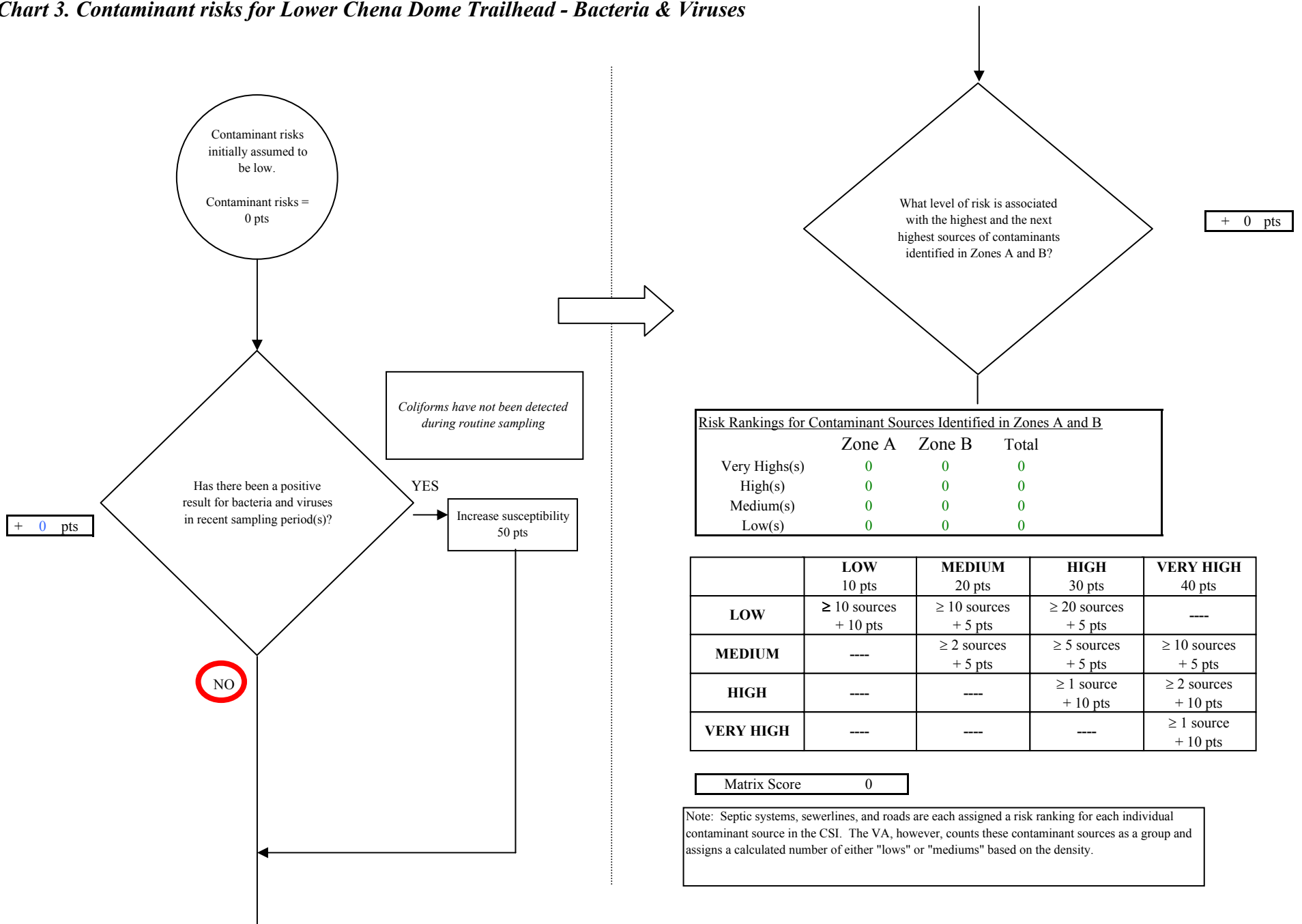
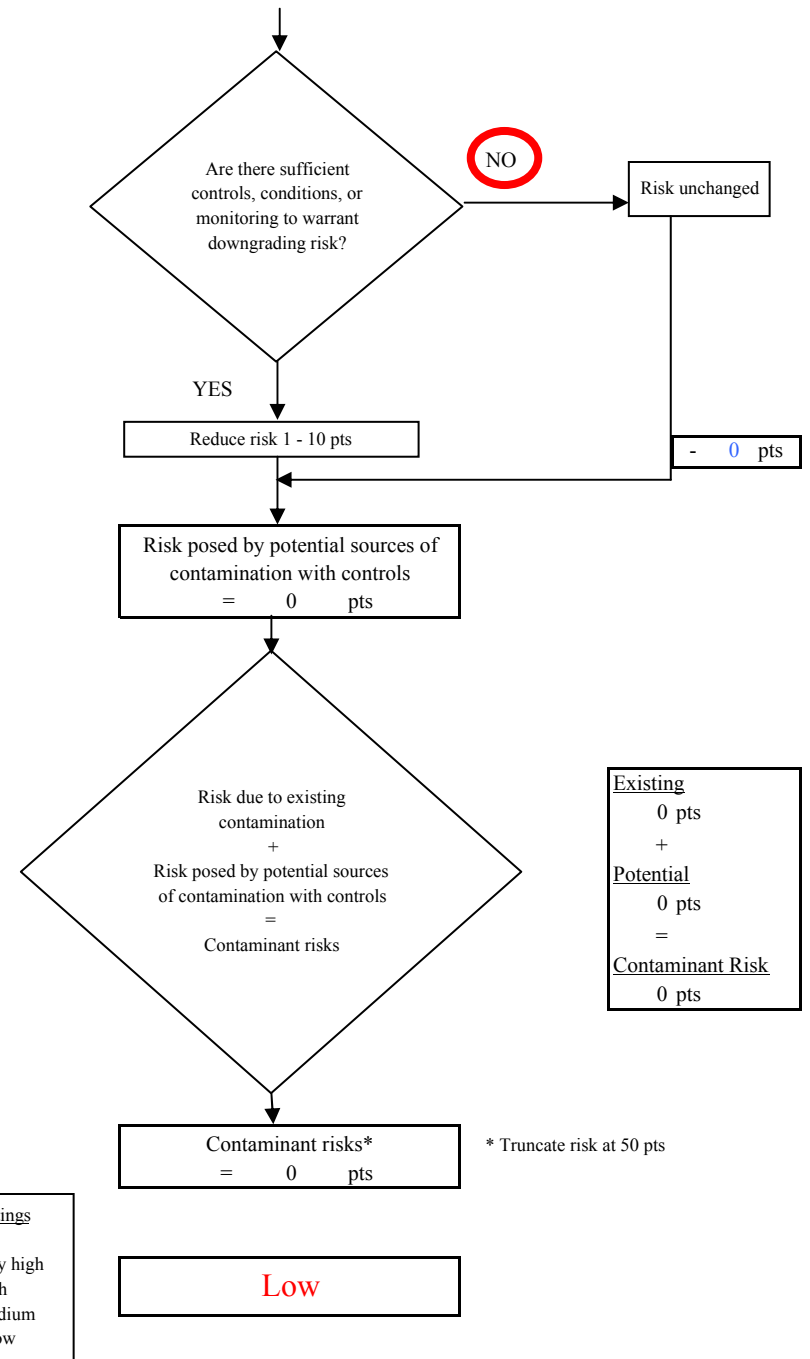
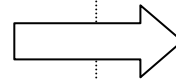
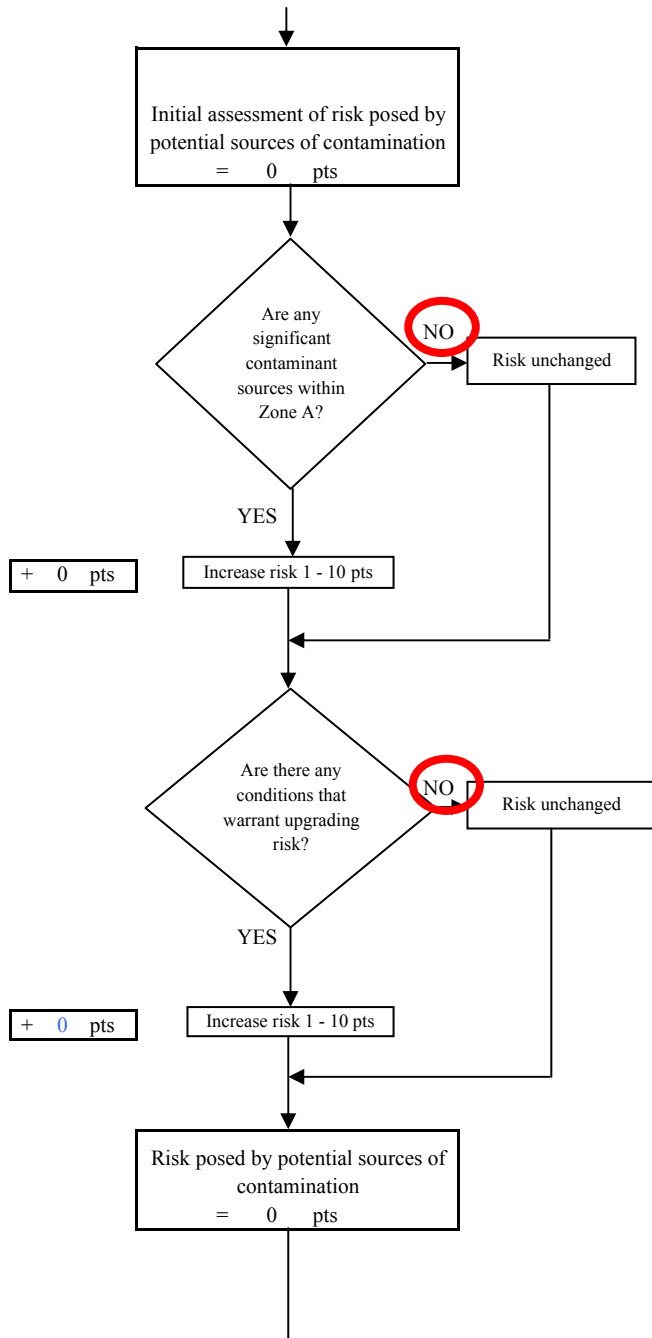


Chart 3. Contaminant risks for Lower Chena Dome Trailhead - Bacteria & Viruses



Contaminant Risk Ratings	
40 to 50 pts	very high
30 to < 40 pts	high
20 to < 30 pts	medium
< 20 pts	low

Chart 4. Vulnerability analysis for Lower Chena Dome Trailhead - Bacteria & Viruses

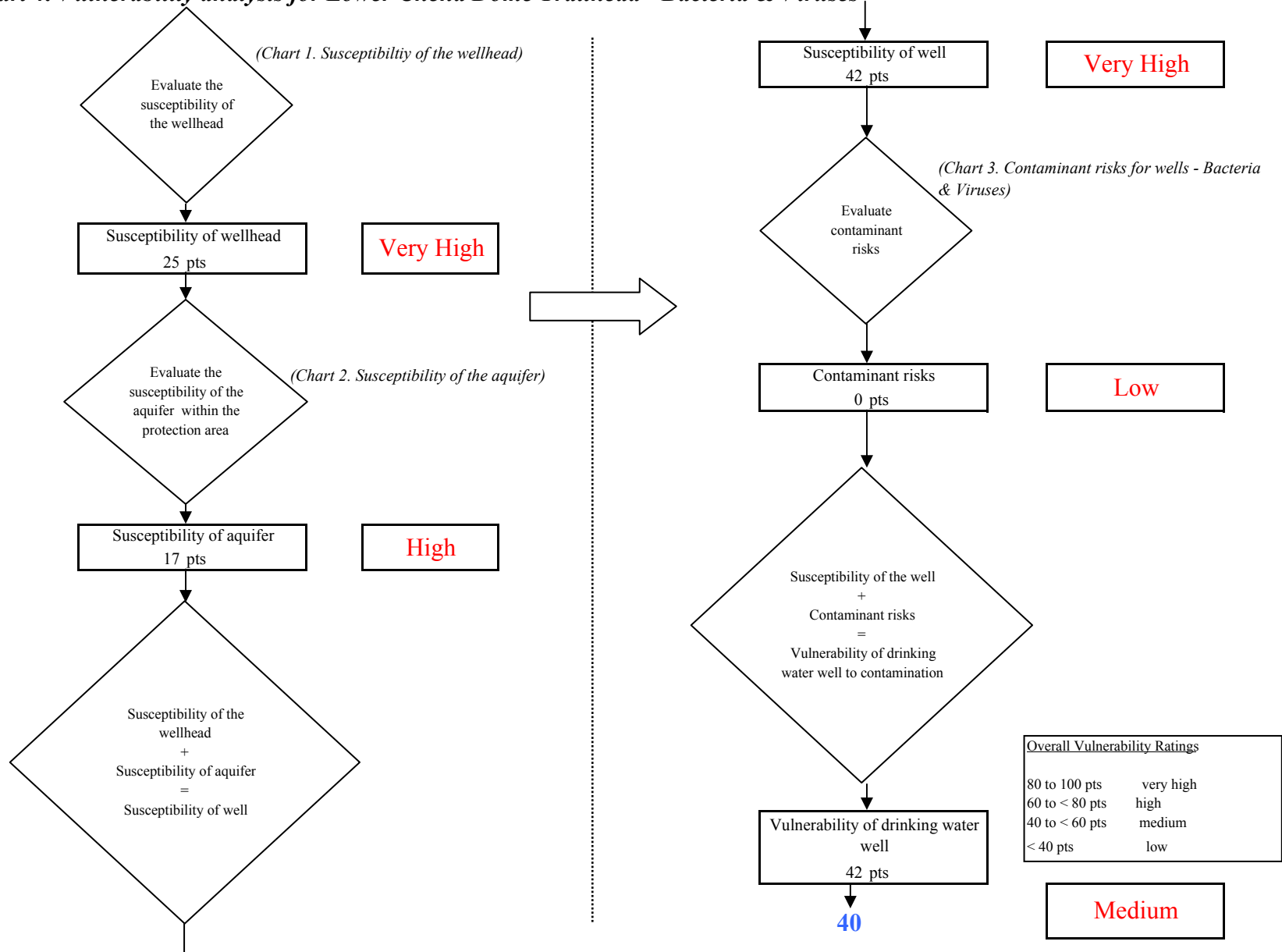


Chart 5. Contaminant risks for Lower Chena Dome Trailhead - Nitrates and Nitrites

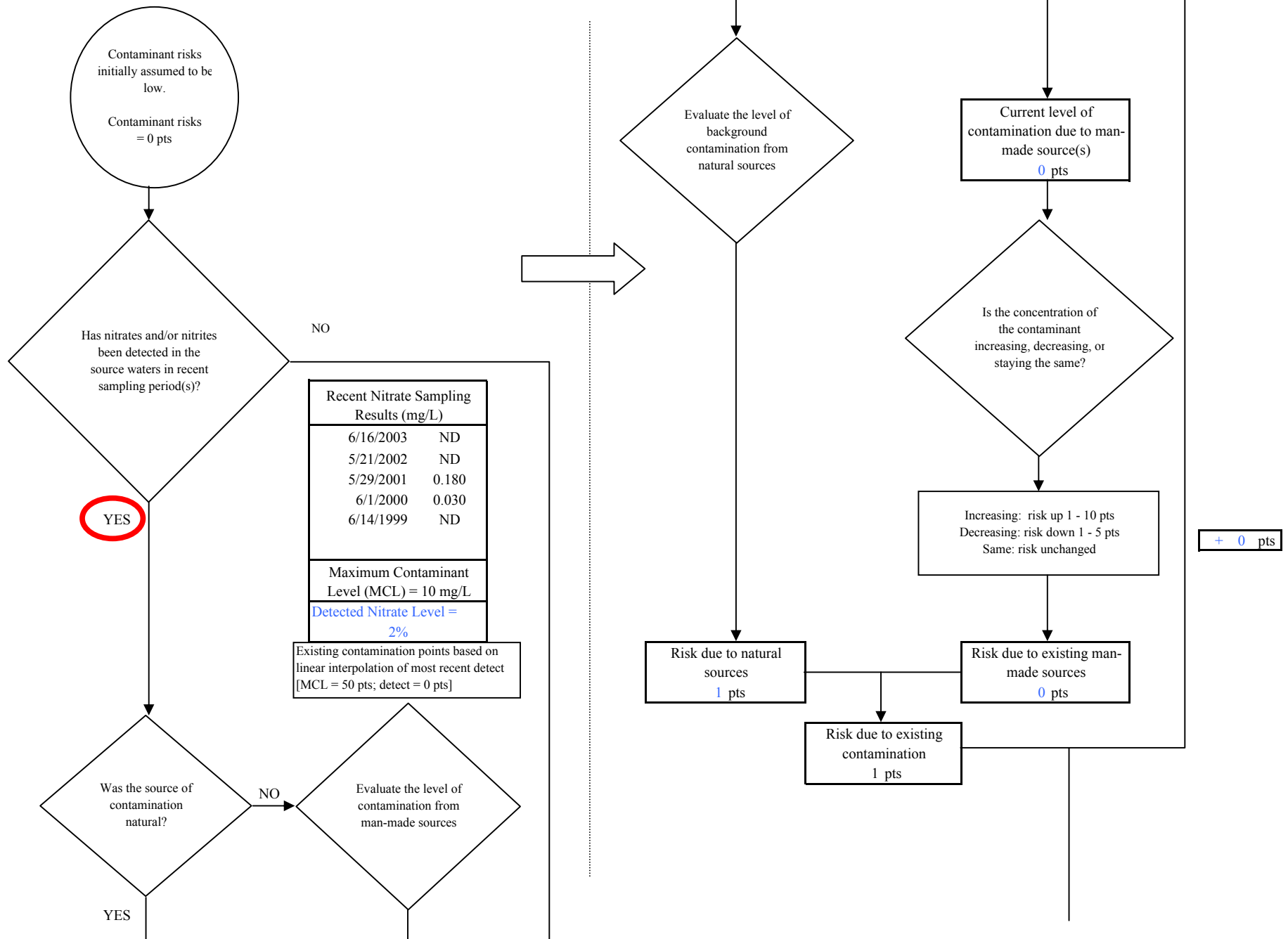


Chart 5. Contaminant risks for Lower Chena Dome Trailhead - Nitrates and Nitrites

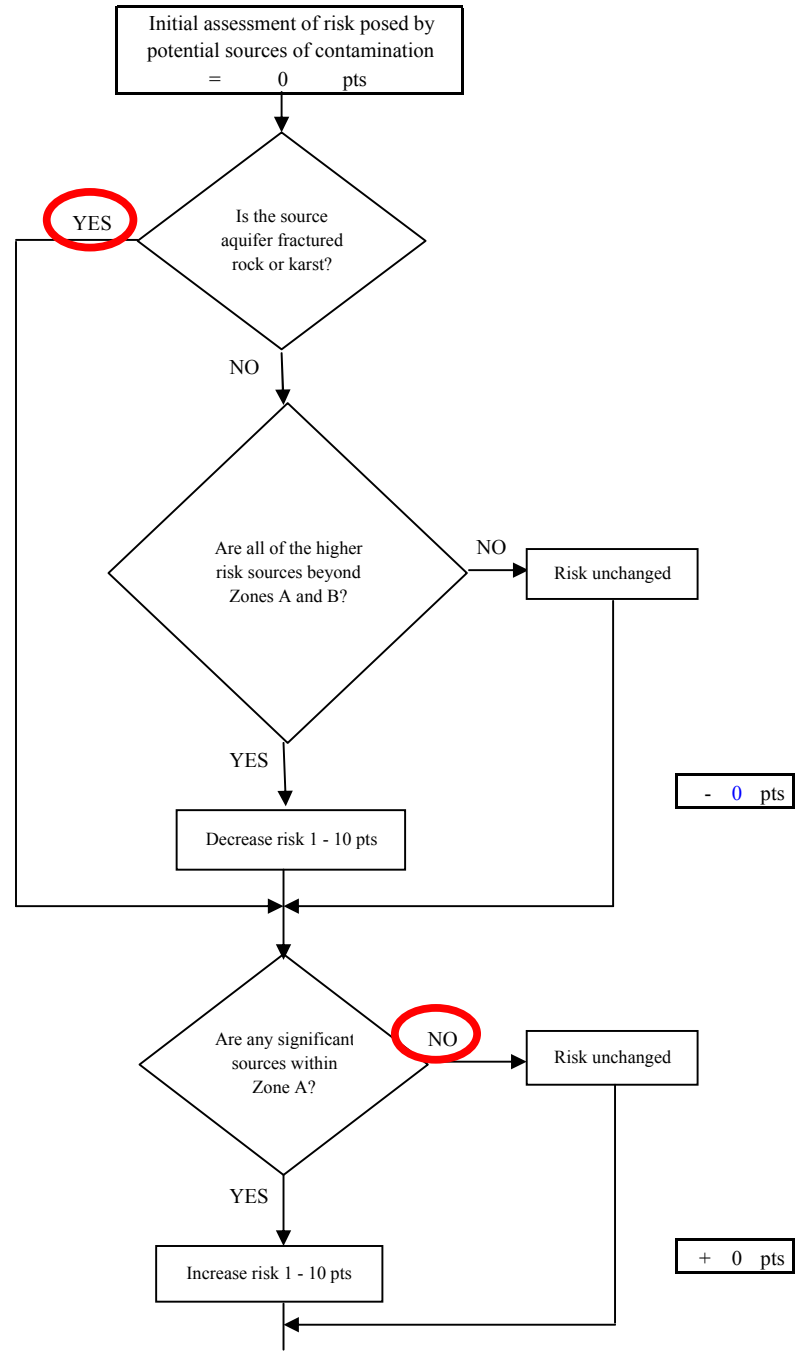
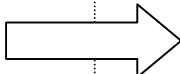
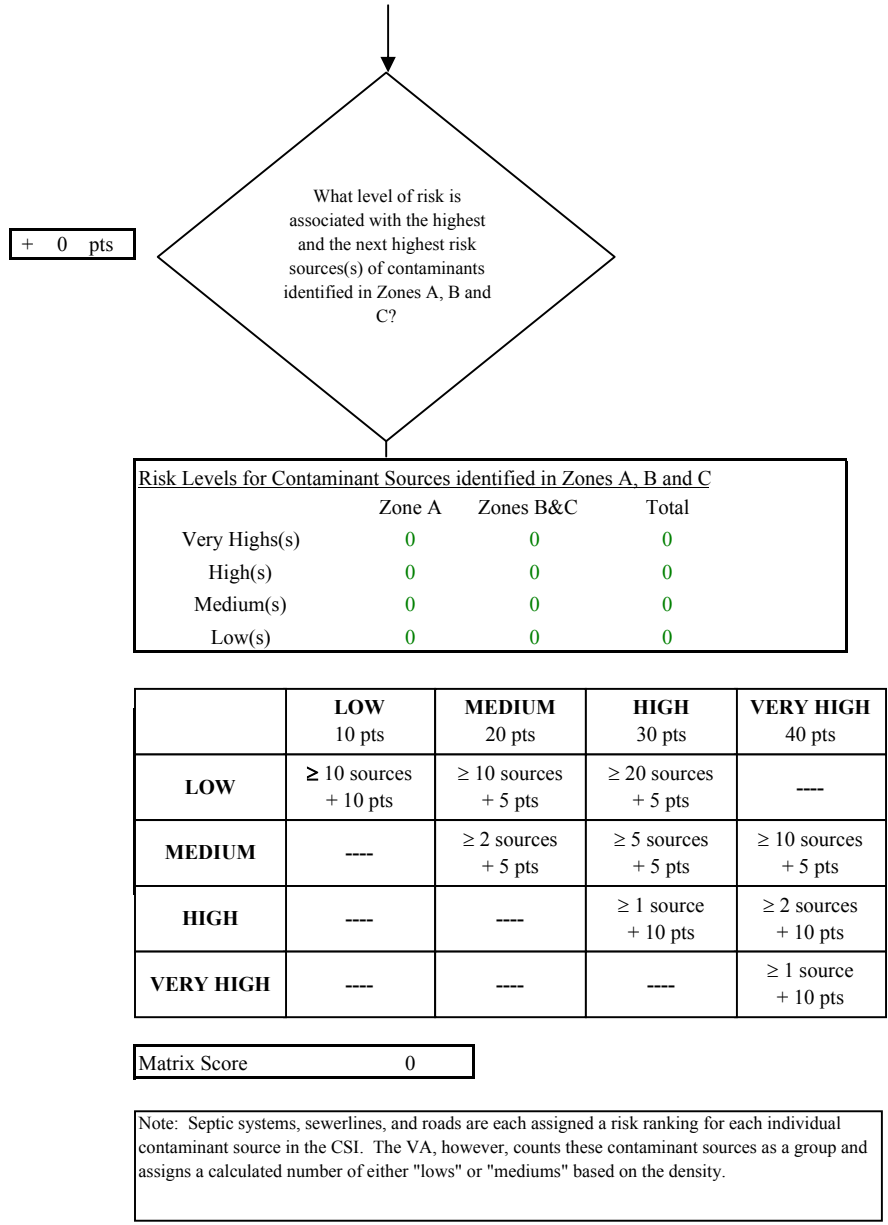


Chart 5. Contaminant risks for Lower Chena Dome Trailhead - Nitrates and Nitrites

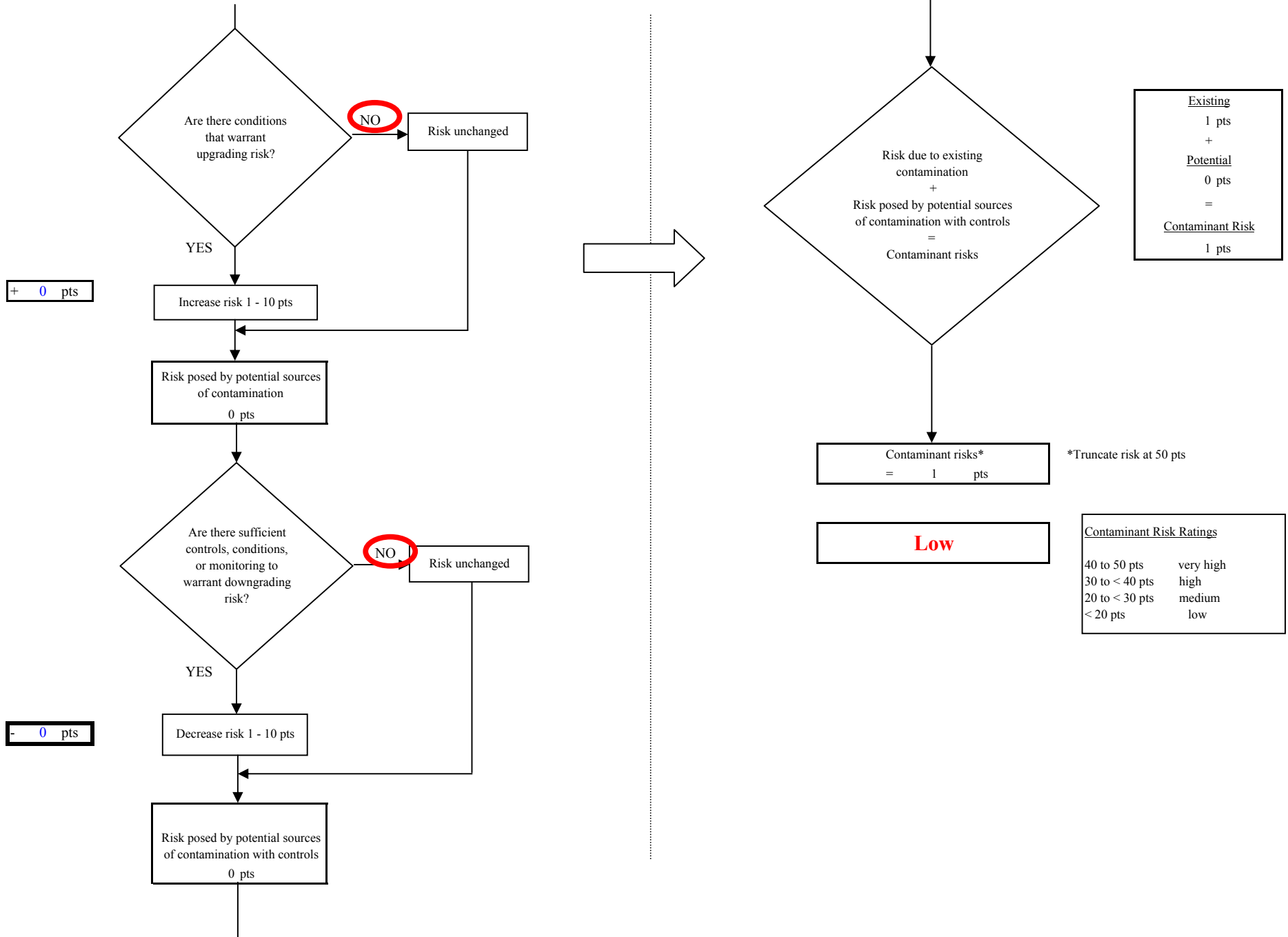


Chart 6. Vulnerability analysis for Lower Chena Dome Trailhead - Nitrates and Nitrites

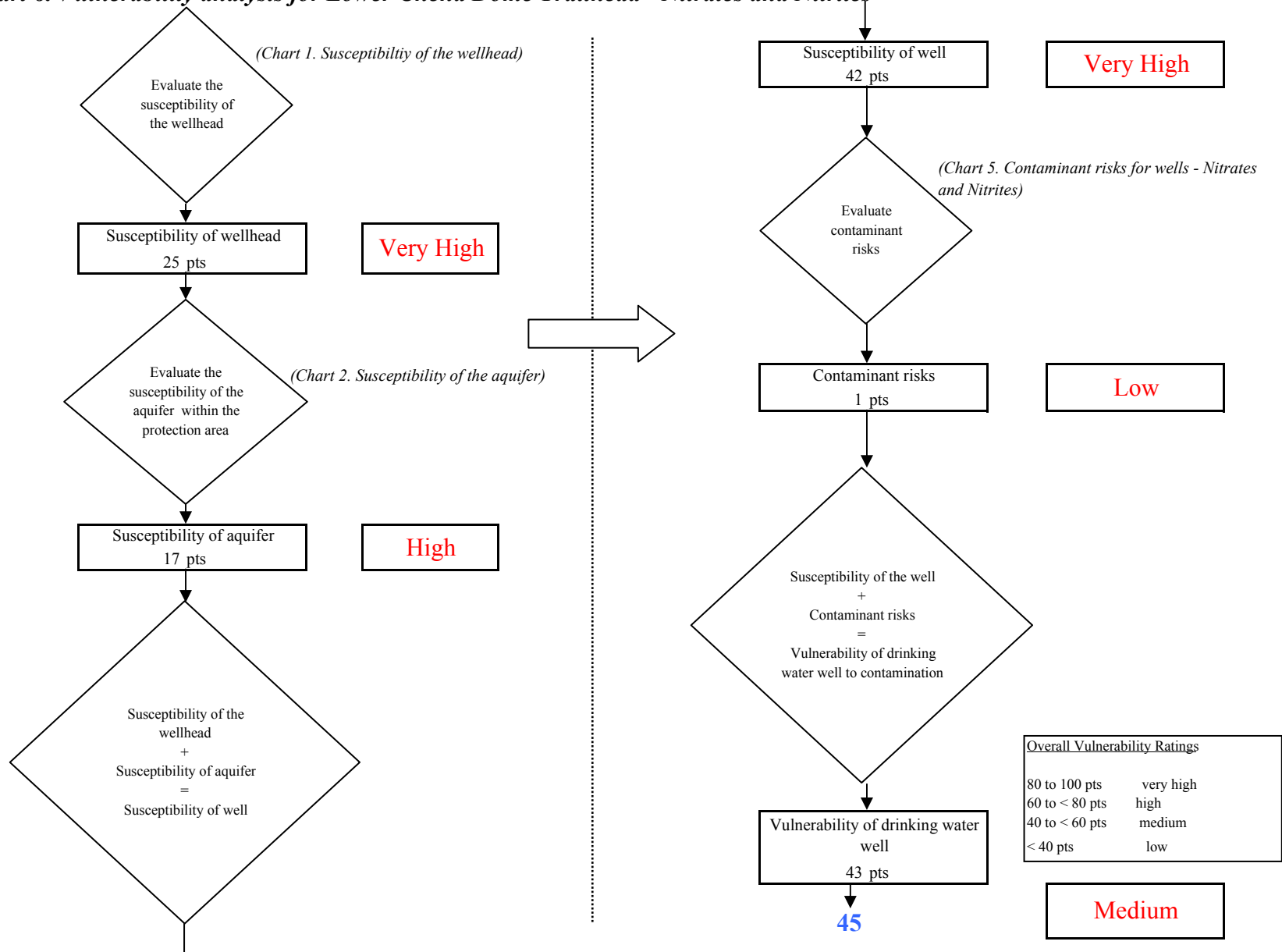


Chart 7. Contaminant risks for Lower Chena Dome Trailhead - Volatile Organic Chemicals

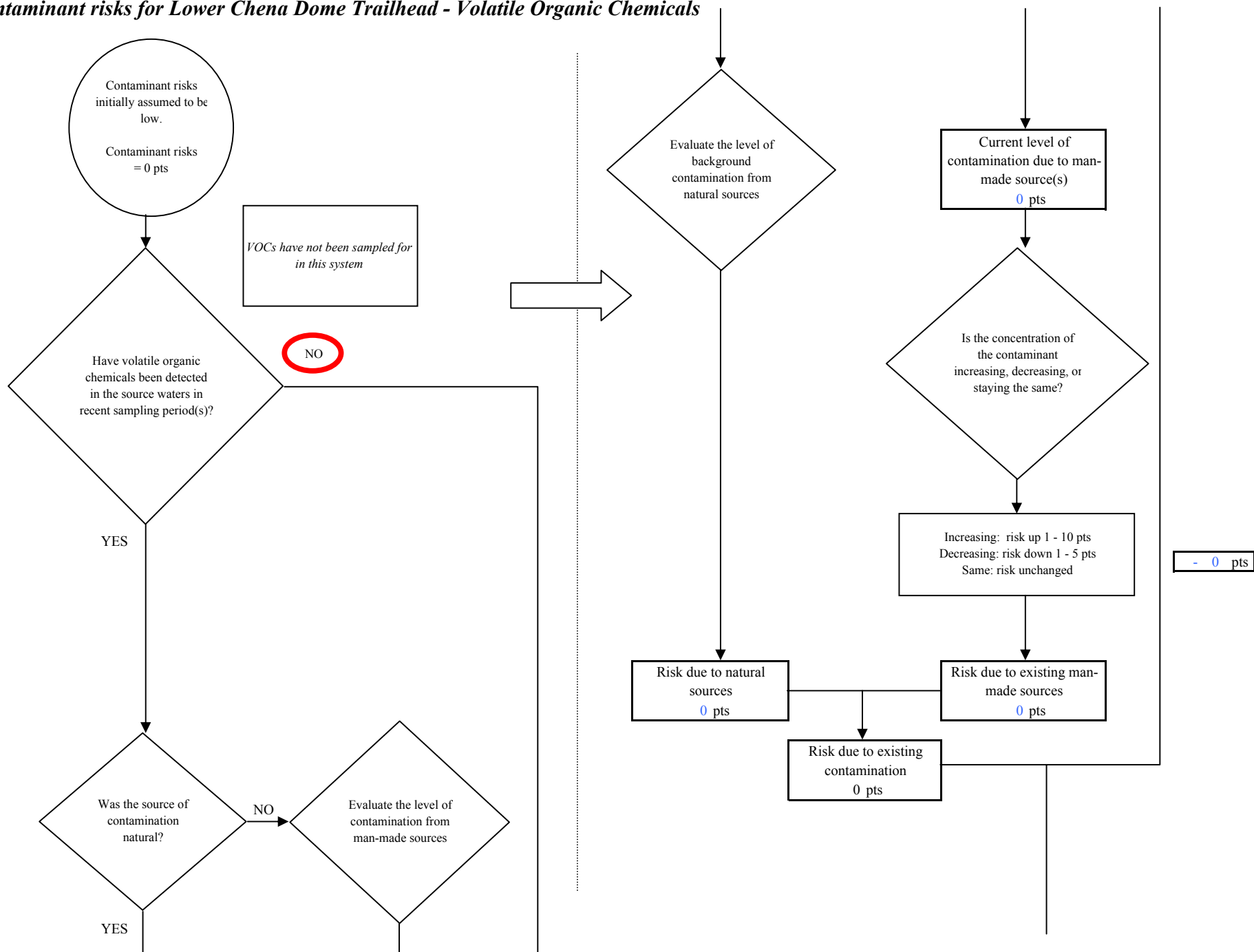
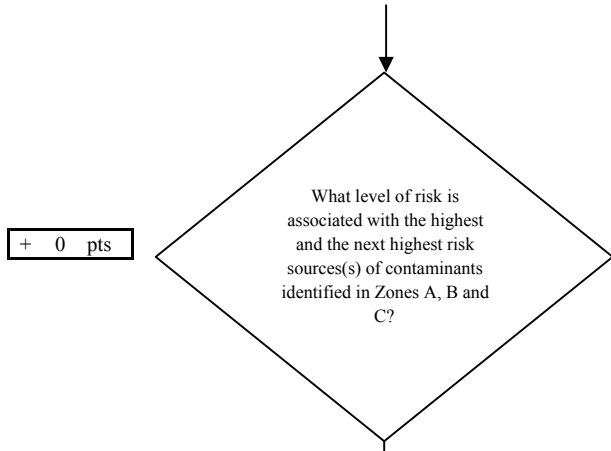


Chart 7. Contaminant risks for Lower Chena Dome Trailhead - Volatile Organic Chemicals



Risk Levels for Contaminant Sources identified in Zones A, B and C			
	Zone A	Zones B&C	Total
Very High(s)	0	0	0
High(s)	0	0	0
Medium(s)	0	0	0
Low(s)	0	0	0

	LOW 10 pts	MEDIUM 20 pts	HIGH 30 pts	VERY HIGH 40 pts
LOW	≥ 10 sources + 10 pts	≥ 10 sources + 5 pts	≥ 20 sources + 5 pts	----
MEDIUM	----	≥ 2 sources + 5 pts	≥ 5 sources + 5 pts	≥ 10 sources + 5 pts
HIGH	----	----	≥ 1 source + 10 pts	≥ 2 sources + 10 pts
VERY HIGH	----	----	----	≥ 1 source + 10 pts

Matrix Score 0

Note: Septic systems, sewerlines, and roads are each assigned a risk ranking for each individual contaminant source in the CSI. The VA, however, counts these contaminant sources as a group and assigns a calculated number of either "lows" or "mediums" based on the density.

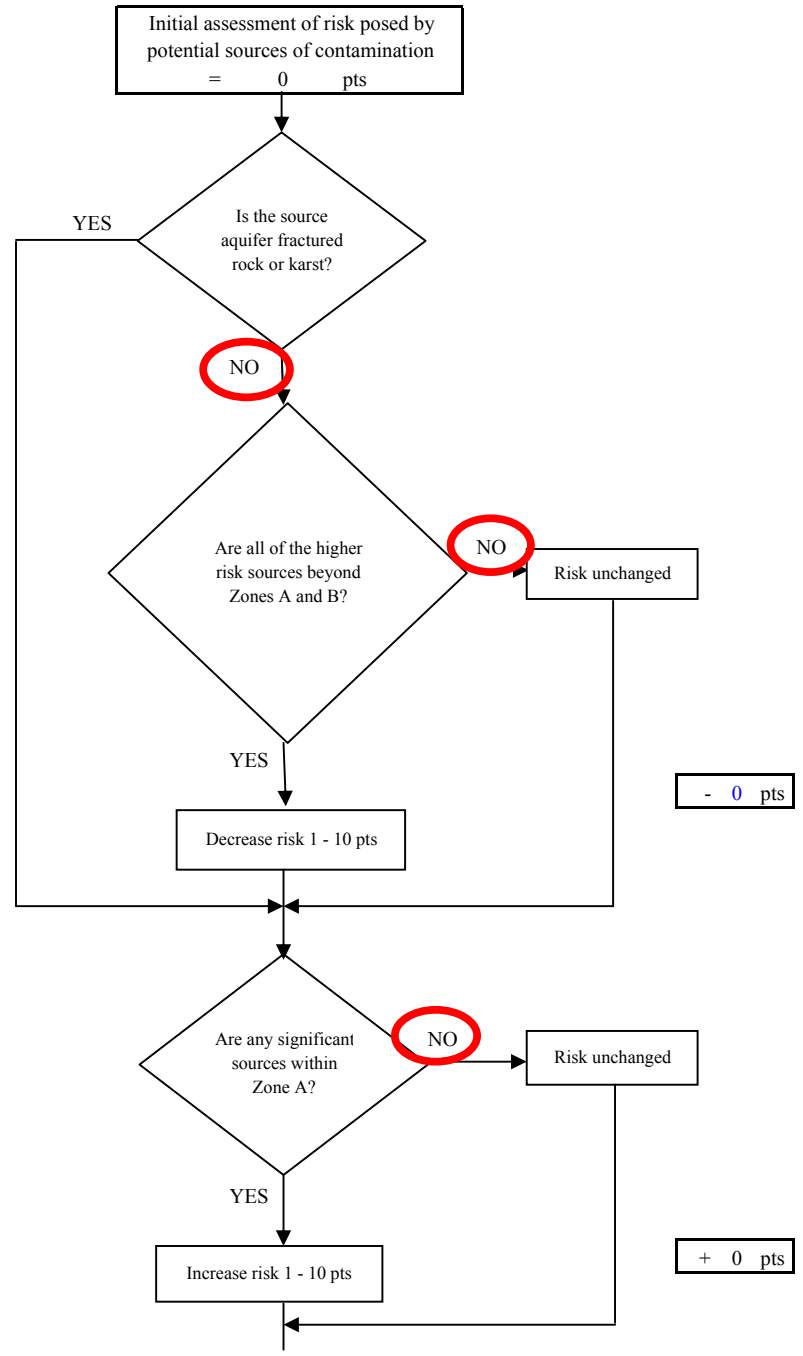
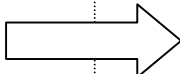


Chart 7. Contaminant risks for Lower Chena Dome Trailhead - Volatile Organic Chemicals

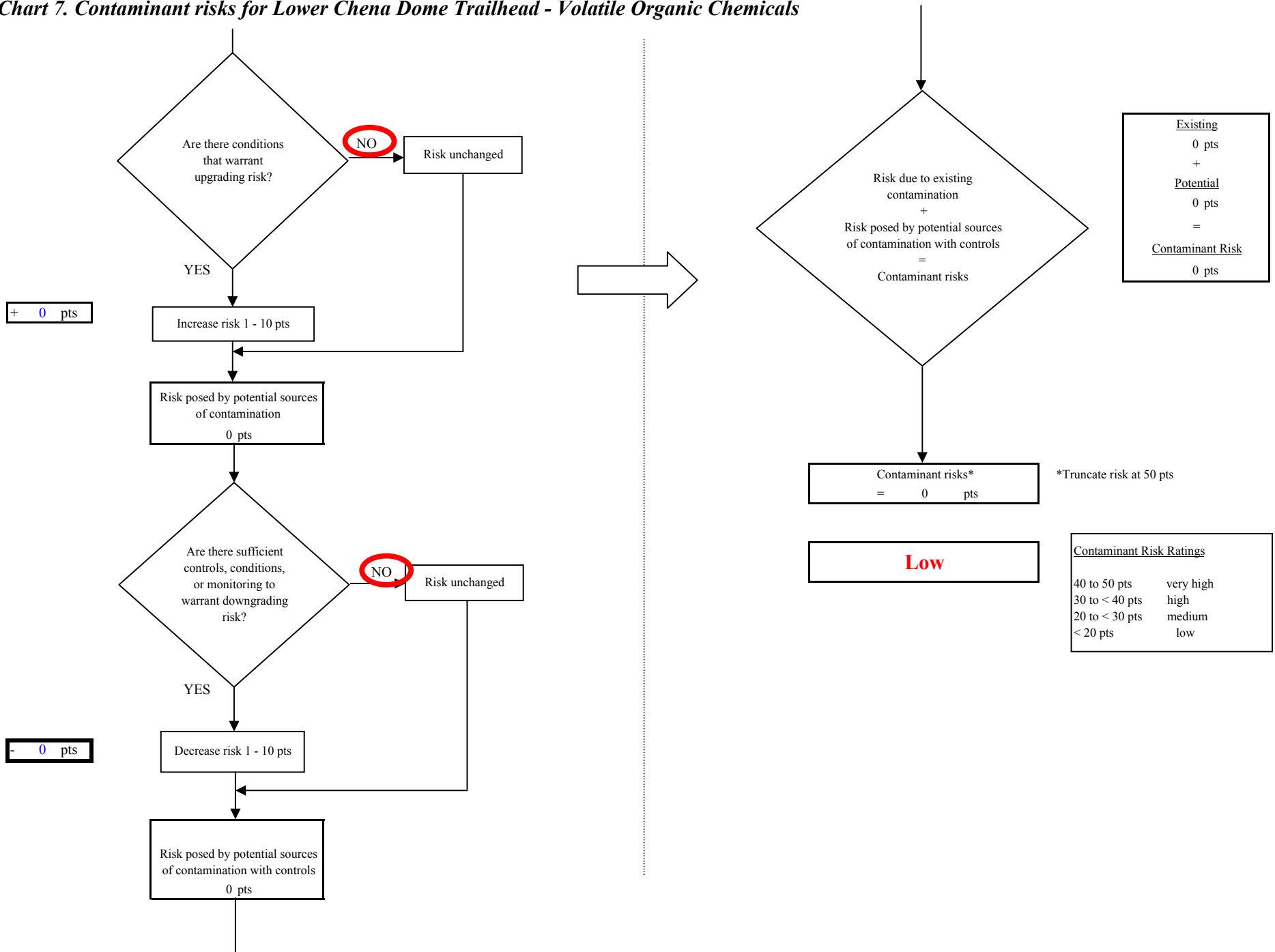


Chart 8. Vulnerability analysis for Lower Chena Dome Trailhead - Volatile Organic Chemicals

