



Source Water Assessment

A Hydrogeologic Susceptibility and
Vulnerability Assessment for
Metro Apartments Drinking Water System,
Eagle River, Alaska
PWSID # 215524.001

DRINKING WATER PROTECTION PROGRAM REPORT #1007

Alaska Department of Environmental Conservation

June, 2003

Source Water Assessment for Metro Apartments Drinking Water System Eagle River, Alaska PWSID# 215524.001

By Suzan J. Hill

DRINKING WATER PROTECTION PROGRAM REPORT 1007

The Drinking Water Protection Program is producing Source Water Assessments in compliance with the Safe Drinking Water Act Amendments of 1996. Each assessment includes a delineation of the source water area, an inventory of potential and existing contaminant sources that may impact the water, a risk ranking for each of these contaminants, and an evaluation of the potential vulnerability of these drinking water sources.

These assessments are intended to provide public water systems owners/operators, communities, and local governments with the best available information that may be used to protect the quality of their drinking water. The assessments combine information obtained from various sources, including the U.S. Environmental Protection Agency, Alaska Department of Environmental Conservation (ADEC), public water system owners/operators, and other public information sources. The results of this assessment are subject to change if additional data becomes available. If you have any additional information that may affect the results of this assessment, please contact the Program Coordinator of DWPP, (907) 269-7521.

CONTENTS

	Page		Page
Executive Summary	1	Inventory of Potential and Existing Contaminant Sources	2
Introduction	1	Ranking of Contaminant Risks	3
Description of the Chugach Mountain Front east of Anchorage, Alaska	1	Vulnerability of Metro Apartments Drinking Water Source	3
Metro Apartments Public Drinking Water System	2	Summary	5
Metro Apartments Protection Area	3	References	7

TABLES

TABLE	1. Definition of Zones	2
	2. Susceptibility	3
	3. Contaminant Risks	3
	3. Overall Vulnerability	4

APPENDICES

APPENDIX	A. Metro Apartments Drinking Water Protection Area (Map 1)
	B. Contaminant Source Inventory for Metro Apartments (Table 1)
	Contaminant Source Inventory and Risk Ranking for Metro Apartments – Bacteria and Viruses (Table 2)
	Contaminant Source Inventory and Risk Ranking for Metro Apartments – Nitrates/Nitrites (Table 3)
	Contaminant Source Inventory and Risk Ranking for Metro Apartments – Volatile Organic Chemicals (Table 4)
	Contaminant Source Inventory and Risk Ranking for Metro Apartments – Heavy Metals, Cyanide and Other Organic Chemicals (Table 5)
	Contaminant Source Inventory and Risk Ranking for Metro Apartments – Synthetic Organic Chemicals (Table 6)
	Contaminant Source Inventory and Risk Ranking for Metro Apartments – Other Organic Chemicals (Table 7)
	C. Metro Apartments Drinking Water Protection Area and Potential and Existing Contaminant Sources (Maps 2-3)
	D. Vulnerability Analysis for Contaminant Source Inventory and Risk Ranking for Metro Apartments Public Drinking Water Source (Charts 1 – 14)

Source Water Assessment for Metro Apartments Source of Public Drinking Water, Eagle River, Alaska

By Suzan J. Hill

Drinking Water Protection Program Alaska Department of Environmental Conservation

EXECUTIVE SUMMARY

The public water system for Metro Apartments is a Class A (community) water system consisting of one well in the Eagle River, Alaska area. Identified potential and current sources of contaminants for Metro Apartments public drinking water source include motor vehicle repair shop, a recycling facility, a car wash, a construction trade area, a welding shop, a furniture manufacturing/repair shop, a motor vehicle storage area, a pet groomer, a gasoline station, underground diesel and gasoline tanks, large capacity and residential septic systems, municipal sewer lines, and roads. These identified potential and existing sources of contamination are considered sources of bacteria and viruses, nitrates and/or nitrites, volatile organic chemicals, heavy metals, synthetic organic chemicals and other organic chemicals. Overall, the public water source for Metro Apartments received a vulnerability rating of **Medium** for bacteria and viruses; synthetic organic chemicals; and other organic chemicals; and **High** for nitrates and nitrites; volatile organic chemicals; and heavy metals.

INTRODUCTION

The Alaska Department of Environmental Conservation (ADEC) is completing source water assessments for all public drinking water sources in the State of Alaska. The purpose of this assessment is to provide public water system owners and/or operators, communities, and local governments with information they can use to preserve the quality of Alaska's public drinking water supplies. The results of this source water assessment can be used to decide where voluntary protection efforts are needed and feasible, and also what efforts will be most effective in reducing contaminant risks to your water system.

This source water assessment combines a review of the natural conditions at the site and the potential and existing contaminant risks. These are combined to

determine the overall vulnerability of the drinking water source to contamination.

DESCRIPTION OF THE CHUGACH MOUNTAIN FRONT EAST OF ANCHORAGE

Location

Between the Chugach Mountain Front east of Anchorage and Knik Arm lie the communities of Eagle River, Chugiak, Peters Creek, and Eklutna. The Eagle River Valley is one of the largest valleys in the western Chugach Mountains. Eagle River and the neighboring communities are located in the Municipality of Anchorage Borough.

Glacial and alluvial forces have shaped the Eagle River Valley and Chugach Mountain front in this area. These forces have resulted in the U-shaped river valleys and moraine-mantled mountain flanks of the mountain front and lakes, streams and undulating ridges and hills of the glaciated lowlands extending to Knik Arm.

Precipitation

Eagle River averages between 20 and 25 inches of precipitation per year, including about 68 inches of snowfall.

Topography and Drainage

The area topography varies from sea level to about 400 feet in the area surrounding Knik Arm to several thousand feet on the surrounding ridges and mountain flanks.

Groundwater

Although the quality can vary significantly in a short distance, groundwater supplies are generally abundant in the area, except for some reported well failures that have occurred within the city limits of Eagle River. Groundwater occurs within both confined and unconfined aquifers and from both unconsolidated and bedrock aquifers. Many homes and businesses in the

area rely on individual wells for their water supply. Most of these wells are shallow with depths of less than 100 feet to 200 feet. Static water levels in many of these wells are less than 15 feet below the surface.

Geology and Soils

Most of the soils in the area provide good sources of sand, gravel and topsoil. The deposition of silt, clay and organic muck in old lakes, oxbows and depressions means that some areas have soil conditions that vary over relatively short distances.

METRO APARTMENTS PUBLIC DRINKING WATER SYSTEM

Metro Apartments is a Class A (community) water system. The system consists of one well and is located at Easy Street and Park Place in Eagle River. (See Map 1 of Appendix A). This area is at an elevation of approximately 425 feet above sea level.

According to the Well Log, there is overburden from 0 to 1 feet; sand and gravel from 1 to 16 feet; coal from 16 to 19 feet; sand, gravel, and clay from 19 to 38 feet; and sand, water and gravel from 38 feet to a total well depth of 42 feet. The well was drilled on 11/3/77 and the static water level was 28 feet. The Sanitary Survey (7/15/02) indicates the wells’ sanitary seal is not properly installed. A properly installed sanitary seal may provide protection against contaminants from entering the source waters at the well casing. The land surface is appropriately sloped away from the well providing adequate surface water drainage. The well is grouted according to ADEC regulations. Proper grouting provides added protection against contaminants travelling along the well casing and into source waters.

This system operates year-round and serves 40 residents through 35 service connections.

METRO APARTMENTS WELL DRINKING WATER PROTECTION AREA

In order to evaluate whether a drinking water source is at risk, we must first evaluate what are the most likely pathways for surface contamination to reach the groundwater. Some areas are more likely to allow contamination to reach the well than others. These areas are determined by looking at the characteristics of the soil, groundwater, aquifer, and well.

The most probable area for contamination to reach the drinking water well is the area that contributes water to

the well, the groundwater recharge area. This area is designated as the Drinking Water Protection Area (DWPA). Because releases of contaminants within the DWPA are most likely to impact the drinking water well, this area will serve as the focus for voluntary protection efforts. (Please refer to the Guidance Manual for Class A Public Water Systems for additional information).

The DWPA's established for wells by the ADEC are separated into four zones. These zones correspond to differences in the time-of-travel (TOT) of the water moving through the aquifer to the well. An analytical calculation was used to determine the size and shape of the DWPA. The input parameters describing the attributes of the aquifer in this calculation were adopted from the U.S. Geological Survey (Patrick, Brabets, and Glass, 1989), and State of Alaska Department of Water Resources (Jokela et. al., 1991).

The time of travel for contaminants within the water varies and is dependent on the physical and chemical characteristics of each contaminant. The following is a summary of the four DWPA zones and the calculated time-of-travel for each:

Table 1. Definition of Zones

Zone	Definition
A	¼ the distance for the 2-yr. TOT
B	Less than the 2 year TOT
C	Less Than the 5 year TOT
D	Less than the 10 year TOT

As an example, water moving through the aquifer in Zone B will reach the well in less than 2 years from the time it crosses the outer limit of Zone B.

Zone A also incorporates the area down-gradient from the well to take into account the area of the aquifer that is influenced by pumping of the well. Water within the aquifer in Zone A will reach the well in several hours to several months.

The DWPA for the Metro Apartments contain two zones: Zone A and Zone B (see Map 1 in Appendix A).

INVENTORY OF POTENTIAL AND EXISTING CONTAMINANT SOURCES

The Drinking Water Protection Program has completed an inventory of potential and existing sources of contamination within the Metro Apartments DWPA. This inventory was completed through a search of agency records and other publicly available information. Potential sources of contamination to the

drinking water aquifer include a wide range of categories and types. Potential drinking water contaminants are found within agricultural, residential, commercial, and industrial areas, but can also occur within areas that have little or no development.

For the basis of all Class A public water system assessments, six categories of drinking water contaminants were inventoried. They include:

- Bacteria and viruses;
- Nitrates and/or nitrites;
- Volatile organic chemicals
- Heavy metals, cyanide, and other inorganic chemicals,
- Synthetic organic chemicals, and
- Other organic chemicals.

The sources are displayed on Maps 2 and 3 of Appendix C and summarized in Table 1 of Appendix B.

RANKING OF CONTAMINANT RISKS

Once the potential and existing sources of contamination have been identified, they are assigned a ranking according to what type and level of risk they represent. Ranking of contaminant risks for a “potential” or “existing” source of contamination is a function of toxicity and volumes of specific contaminants associated with that source.

Tables 2 through 7 in Appendix B contain the ranking of potential and existing sources of contamination with respect to bacteria and viruses, nitrates and/or nitrites, volatile organic chemicals, heavy metals, synthetic organic chemicals, and other organic chemicals.

VULNERABILITY OF METRO APARTMENTS DRINKING WATER SOURCE

Vulnerability of a drinking water source to contamination is a combination of two factors:

- Natural susceptibility; and
- Contaminant risks.

Each of the six categories of drinking water contaminants has been analyzed and an overall vulnerability score of 0 to 100 is ultimately assigned:

$$\begin{array}{r}
 \text{Natural Susceptibility (0 – 50 points)} \\
 + \\
 \text{Contaminant Risks (0 – 50 points)} \\
 = \\
 \text{Vulnerability of the}
 \end{array}$$

Drinking Water Source to Contamination (0 – 100). A score for the Natural Susceptibility is achieved by analyzing the properties of the well and the aquifer.

$$\begin{array}{r}
 \text{Susceptibility of the Wellhead (0 – 25 Points)} \\
 + \\
 \text{Susceptibility of the Aquifer (0 – 25 Points)} \\
 = \\
 \text{Natural Susceptibility (Susceptibility of the Well)} \\
 \text{(0 – 50 Points)}
 \end{array}$$

The well for Metro Apartments is completed in an unconfined aquifer setting. Because an unconfined aquifer is recharged by surface water and precipitation that migrates downward from the surface, contaminants at the surface have the potential to adversely impact this aquifer. Table 2 shows the Susceptibility scores and ratings for Metro Apartments.

Table 2. Susceptibility

	Score	Rating
Susceptibility of the Wellhead	0	Low
Susceptibility of the Aquifer	23	Very High
Natural Susceptibility	23	Medium

Contaminant risks to a drinking water source depend on the type, number or density, and distribution of contaminant sources. This data has been derived from an examination of existing and historical contamination that has been detected at the drinking water source through routine sampling. It also evaluates potential sources of contamination. Table 3 summarizes the Contaminant Risks for each category of drinking water contaminants.

Table 3. Contaminant Risks

Category	Score	Rating
Bacteria and Viruses	25	Medium
Nitrates and/or Nitrites	42	Very High
Volatile Organic Chemicals	50	Very High
Heavy Metals, Cyanide, and Other Inorganic Chemicals	50	Very High
Synthetic Organic Chemicals	22	Medium
Other Organic Chemicals	30	High

Appendix D contains fourteen charts, which together form the ‘Vulnerability Analysis’ for a source water assessment for a public drinking water source. Chart 1 analyzes the ‘Susceptibility of the Wellhead’ to contamination by looking at the construction of the well and its surrounding area. Chart 2 analyzes the ‘Susceptibility of the Aquifer’ to contamination by looking at the naturally occurring attributes of the water source and influences on the groundwater system that might lead to contamination. Chart 3 analyzes ‘Contaminant Risks’ for the drinking water source with respect to bacteria and viruses. The ‘Contaminant Risks’ portion of the analysis considers potential sources of contaminants as well as a review of contamination that has or may have occurred, but has not arrived or been detected at the well. Lastly, Chart 4 contains the ‘Vulnerability Analysis for Bacteria and Viruses’. Charts 5 through 14 contain the Contaminant Risks and Vulnerability Analyses for nitrates and nitrites, volatile organic chemicals, heavy metals, synthetic organic chemicals, and other organic chemicals, respectively.

Table 4 contains the overall vulnerability scores (0 – 100) and ratings for each of the six categories of drinking water contaminants. Note: scores are rounded off to the nearest five.

Table 4. Overall Vulnerability

Category	Score	Rating
Bacteria and Viruses	50	Medium
Nitrates and Nitrites	65	High
Volatile Organic Chemicals	70	High
Heavy Metals, Cyanide and Other Inorganic Chemicals	75	High
Synthetic Organic Chemicals	45	Medium
Other Organic Chemicals	55	Medium

Bacteria and Viruses

The contaminant risk for bacteria and viruses is medium with municipal sewer lines in Zones A and B presenting the most significant risk to the drinking water well (See Chart 3 – Contaminant Risks for Bacteria and Viruses in Appendix D).

Recent sampling of Metro Apartments shows no detection of Bacteria and Viruses. After combining the contaminant risk for bacteria and viruses with the natural susceptibility of the well, the overall vulnerability of the well to contamination is Medium.

Nitrates and Nitrites

The contaminant risk for nitrates and nitrites is very high with municipal sewer lines in Zones A and B

posing the most significant contaminant risk to this source of public drinking water (See Chart 5 - Contaminant Risks for Nitrates and/or Nitrites in Appendix D). Nitrates are very mobile, moving at approximately the same rate as water.

Sampling history for Metro Apartments well indicates that concentrations of nitrate have been detected. At the latest sampling period, a concentration of nitrate and/or nitrite was detected at 3.350 mg/L or 36% of the Maximum Contaminant Level (MCL) of 10mg/L. The MCL is the maximum level of contaminant that is allowed to exist in drinking water and still be consumed by humans without harmful health effects.

It is unknown how much of the existing nitrate concentration can be attributed to natural or human-made sources. Nitrate concentrations in uncontaminated groundwater are typically less than 2 milligrams per liter (mg/L) and are derived primarily from the decomposition of organic matter in soils [Wang, Strelakos, Jokela, 2000].

After combining the contaminant risk for nitrates and nitrites with the natural susceptibility of the well, the overall vulnerability of the well to contamination is High.

Volatile Organic Chemicals

The contaminant risk for volatile organic chemicals is very high with a gasoline station, and underground diesel and gasoline storage tanks in Zone A presenting a significant risk to the drinking water well (See Chart 7 – Contaminant Risks for Volatile Organic Chemicals in Appendix D). Recent sampling history of Metro Apartments (12/31/01) did not detect any chemicals in the Volatile Organic Chemicals category. After combining the contaminant risk for volatile organic chemicals with the natural susceptibility of the well, the overall vulnerability of the well to contamination is High.

Heavy Metals, Cyanide, and Other Inorganic Chemicals

The contaminant risk for heavy metals is very high with recycling and waste reduction facilities in Zones A and B posing the most significant risk to the drinking water well (See Chart 9 – Contaminant Risks for Heavy Metals, Cyanide, and Other Inorganic Chemicals in Appendix D). Monitoring samples analyzing chemicals within the Heavy Metals, Cyanide and Other Inorganic Chemicals collected on 12/12/02 did not detect any chemicals in this category.

After combining the contaminant risk for heavy metals, cyanide, and other inorganic chemicals with the natural

susceptibility of the well, the overall vulnerability of the well to contamination is High.

Synthetic Organic Chemicals

The contaminant risk for synthetic organic chemicals is medium with a furniture manufacturing/repair shop in Zone B posing the most significant risk. After combining the contaminant risk with the natural susceptibility of the well, the overall vulnerability of the well to synthetic organic chemicals is Medium.

Other Organic Chemicals

The contaminant risk for other organic chemicals is high with motor vehicle repair shops in Zone A and B posing the most significant risk. After combining the contaminant risk with the natural susceptibility of the well, the overall vulnerability of the well to other organic chemicals is Medium.

Review of the historical sampling data indicates there is no sampling history for synthetic organic chemicals or other organic chemicals for Metro Apartments' drinking water (See Charts 11 and 13 – Contaminant Risks for Synthetic Organic Chemicals and Other Organic Chemicals in Appendix D, respectively).

SUMMARY

This assessment of contaminant risks can be used as a foundation for local voluntary protection efforts as well as a basis for the continuous efforts on the part of Metro Apartments to protect public health. It is anticipated that *Source Water Assessments* will be updated every five years to reflect any changes in the vulnerability and/or susceptibility of Metro Apartments public drinking water source.

REFERENCES CITED

Munter, J.A., and Allely, R. D., 1992, Water-Supply Aquifers at Eagle River, Alaska: State of Alaska Division of Geological & Geophysical Surveys Professional Report 108.

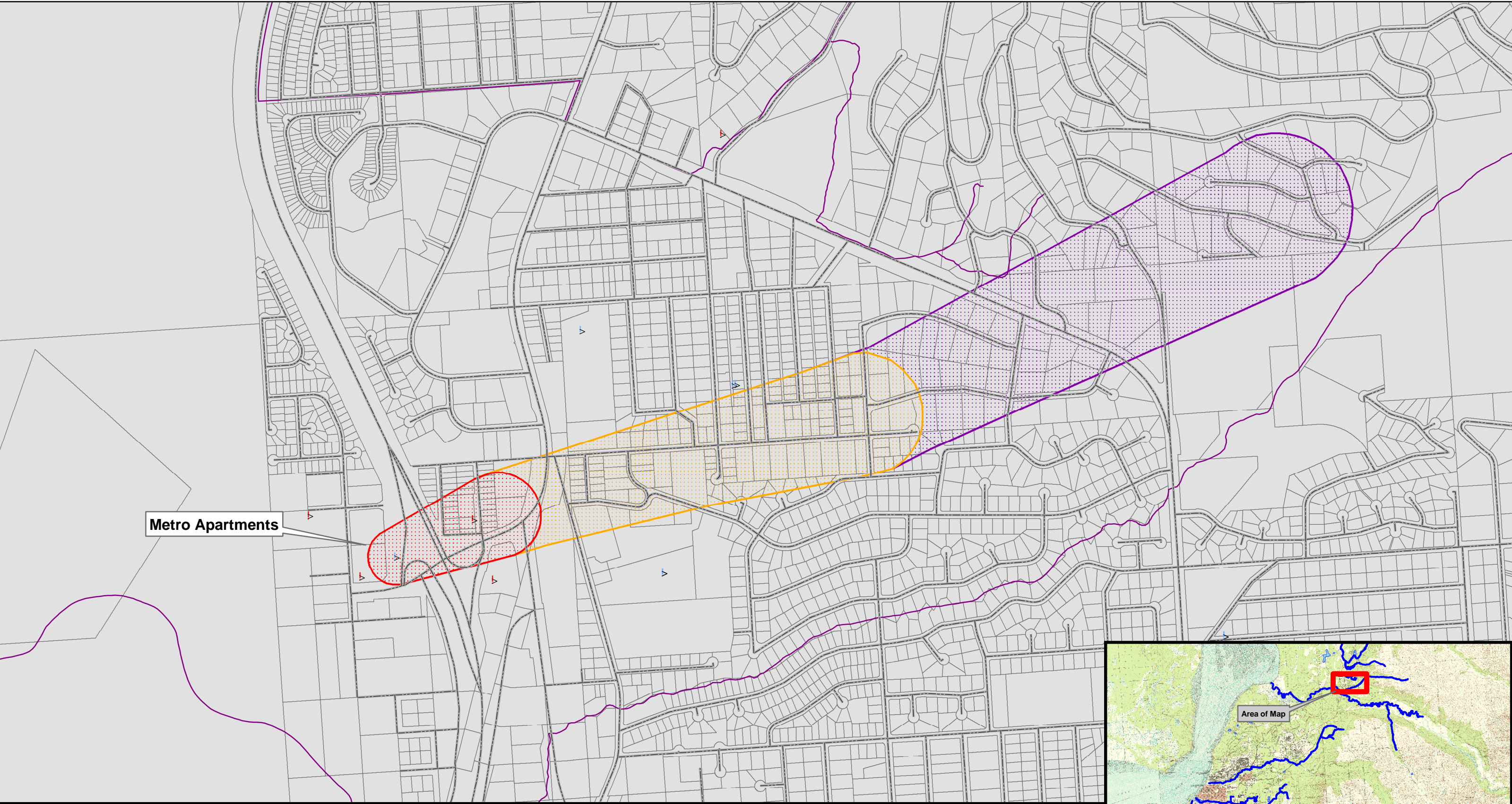
Patrick, L.D., Brabets, T.P., and Glass, R.L., 1989, Simulation of ground-water flow at Anchorage, Alaska: US Geological Survey Water-Resources Investigations Report 88-4139, 41p.

Wang, B., Strelakos, P.M., and Jokela, J.B., 2000, Nitrate source indicators in ground water of the scimitar subdivision, Peters Creek Area, Anchorage, Alaska: US Geological Survey Water-Resources Investigations Report 00-4137.

Weather Underground, June 18, 2002, Web extension to the *Western Regional Climate Center* [WWW document]. URL <http://www.wunderground.com>

APPENDIX A

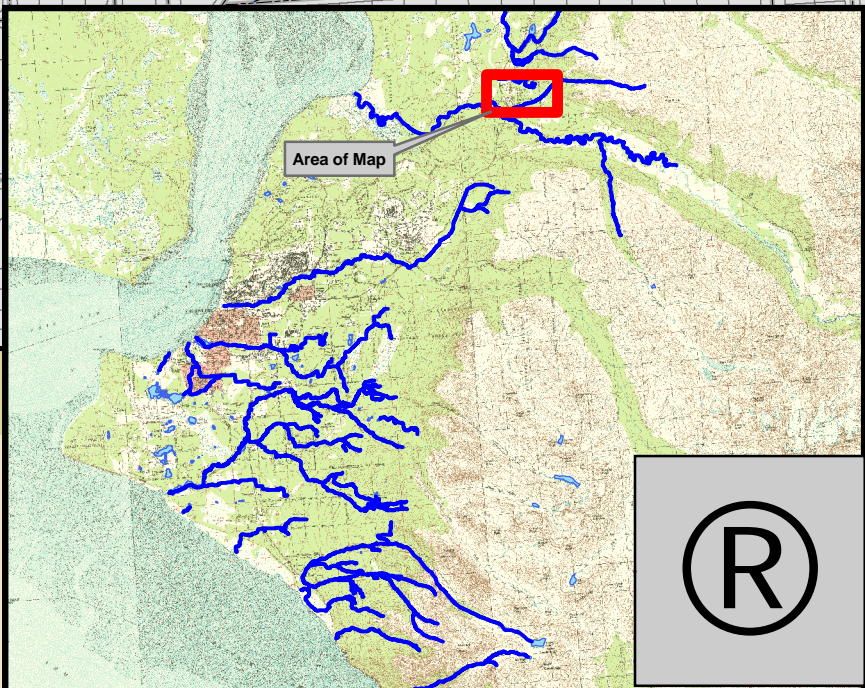
Metro Apartments Drinking Water Protection Area Location Map (Map 1)



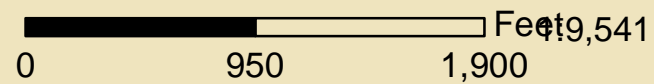
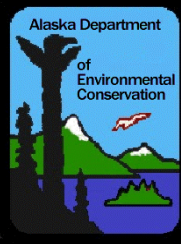
Metro Apartments

Map 1- Metro Apartments: Drinking Water Protection Area

PWSID: 215524



Area of Map



Data Sources:
 Kenai Borough: Roads and parcels
 USGS-63,360 topo map and hillshade
 Potential Sources of Contamination: ADEC

Legend	
	Class A Public Water System
	Class B Public Water System
	Zone_A_Protection_Area
	<all other values>
	Zone_C_Protection_Area



APPENDIX B

Contaminant Source Inventory and Risk Ranking for Metro Apartments (Tables 1-7)

Table 1**Contaminant Source Inventory for
Metro Apartments****PWSID 215524.001**

Contaminant Source Type	Contaminant Source ID	CS ID tag	Zone	Map Number	Comments
Gasoline stations (without repair shop)	C15	C15-1	A	2	
Motor /motor vehicle repair shops	C31	C31-1	A	2	
Pet groomers	C34	C34-1	A	2	
Domestic wastewater collection systems (sewer lines or lift stations)	D01	D01-1-3	A	2	
Recycling and waste reduction facilities	D57	D57-1	A	2	
Septic systems (serves one single-family home)	R02	R02-1	A	2	
Tanks, diesel (underground)	T08	T08-1	A	2	
Tanks, gasoline (underground)	T12	T12-1	A	2	
Highways and roads, paved (cement or asphalt)	X20	X20-1-7	A	2	
Car washes with engine or undercarriage cleaning	C08	C08-1	B	2	
Construction trade areas and materials	C09	C09-1	B	2	
Furniture manufacturing, repair, and finishing shops	C14	C14-1	B	2	
Motor /motor vehicle repair shops	C31	C31-2	B	2	
Motor /motor vehicle repair shops	C31	C31-3	B	2	
Motor /motor vehicle repair shops	C31	C31-4	B	2	
Welding shops	C43	C43-1	B	2	
Domestic wastewater collection systems (sewer lines or lift stations)	D01	D01-4-10	B	2	
Recycling and waste reduction facilities	D57	D57-2	B	2	
Septic systems (serves one single-family home)	R02	R02-2-39	B	2	
Highways and roads, paved (cement or asphalt)	X20	X20-8-20	B	2	
Motor vehicle/general storage yards/facilities	X27	X27-1	B	2	

Table 2

*Contaminant Source Inventory and Risk Ranking for
Metro Apartments
Sources of Bacteria and Viruses*

PWSID 215524.001

<i>Contaminant Source Type</i>	<i>Contaminant Source ID</i>	<i>CS ID tag</i>	<i>Zone</i>	<i>Risk Ranking for Analysis</i>	<i>Map Number</i>	<i>Comments</i>
Domestic wastewater collection systems (sewer lines or lift stations)	D01	D01-1-3	A	Medium	2	
Septic systems (serves one single-family home)	R02	R02-1	A	Low	2	
Highways and roads, paved (cement or asphalt)	X20	X20-1-7	A	Low	2	
Domestic wastewater collection systems (sewer lines or lift stations)	D01	D01-4-10	B	Medium	2	
Septic systems (serves one single-family home)	R02	R02-2-39	B	Low	2	
Highways and roads, paved (cement or asphalt)	X20	X20-8-20	B	Low	2	

Table 3

*Contaminant Source Inventory and Risk Ranking for
Metro Apartments
Sources of Nitrates/Nitrites*

PWSID 215524.001

<i>Contaminant Source Type</i>	<i>Contaminant Source ID</i>	<i>CS ID tag</i>	<i>Zone</i>	<i>Risk Ranking for Analysis</i>	<i>Map Number</i>	<i>Comments</i>
Domestic wastewater collection systems (sewer lines or lift stations)	D01	D01-1-3	A	Medium	2	
Septic systems (serves one single-family home)	R02	R02-1	A	Low	2	
Highways and roads, paved (cement or asphalt)	X20	X20-1-7	A	Low	2	
Domestic wastewater collection systems (sewer lines or lift stations)	D01	D01-4-10	B	Medium	2	
Septic systems (serves one single-family home)	R02	R02-2-39	B	Low	2	
Highways and roads, paved (cement or asphalt)	X20	X20-8-20	B	Low	2	

Table 4

*Contaminant Source Inventory and Risk Ranking for
Metro Apartments
Sources of Volatile Organic Chemicals*

PWSID 215524.001

<i>Contaminant Source Type</i>	<i>Contaminant Source ID</i>	<i>CS ID tag</i>	<i>Zone</i>	<i>Risk Ranking for Analysis</i>	<i>Map Number</i>	<i>Comments</i>
Gasoline stations (without repair shop)	C15	C15-1	A	High	2	
Motor /motor vehicle repair shops	C31	C31-1	A	Medium	2	
Pet groomers	C34	C34-1	A	Low	2	
Domestic wastewater collection systems (sewer lines or lift stations)	D01	D01-1-3	A	Low	2	
Septic systems (serves one single-family home)	R02	R02-1	A	Low	2	
Tanks, diesel (underground)	T08	T08-1	A	High	2	
Tanks, gasoline (underground)	T12	T12-1	A	High	2	
Highways and roads, paved (cement or asphalt)	X20	X20-1-7	A	Low	2	
Car washes with engine or undercarriage cleaning	C08	C08-1	B	High	2	
Construction trade areas and materials	C09	C09-1	B	Low	2	
Furniture manufacturing, repair, and finishing shops	C14	C14-1	B	Medium	2	
Motor /motor vehicle repair shops	C31	C31-2	B	Medium	2	
Motor /motor vehicle repair shops	C31	C31-3	B	Medium	2	
Motor /motor vehicle repair shops	C31	C31-4	B	Medium	2	
Welding shops	C43	C43-1	B	Medium	2	
Domestic wastewater collection systems (sewer lines or lift stations)	D01	D01-4-10	B	Low	2	
Septic systems (serves one single-family home)	R02	R02-2-39	B	Low	2	
Highways and roads, paved (cement or asphalt)	X20	X20-8-20	B	Low	2	
Motor vehicle/general storage yards/facilities	X27	X27-1	B	Low	2	

Table 5

*Contaminant Source Inventory and Risk Ranking for
Metro Apartments*

PWSID 215524.001

Sources of Heavy Metals, Cyanide and Other Inorganic Chemicals

<i>Contaminant Source Type</i>	<i>Contaminant Source ID</i>	<i>CS ID tag</i>	<i>Zone</i>	<i>Risk Ranking for Analysis</i>	<i>Map Number</i>	<i>Comments</i>
Gasoline stations (without repair shop)	C15	C15-1	A	Low	2	
Motor /motor vehicle repair shops	C31	C31-1	A	Medium	2	
Domestic wastewater collection systems (sewer lines or lift stations)	D01	D01-1-3	A	Low	2	
Recycling and waste reduction facilities	D57	D57-1	A	High	2	
Septic systems (serves one single-family home)	R02	R02-1	A	Low	2	
Tanks, gasoline (underground)	T12	T12-1	A	Medium	2	
Highways and roads, paved (cement or asphalt)	X20	X20-1-7	A	Low	2	
Car washes with engine or undercarriage cleaning	C08	C08-1	B	Medium	2	
Construction trade areas and materials	C09	C09-1	B	Low	2	
Furniture manufacturing, repair, and finishing shops	C14	C14-1	B	Low	2	
Motor /motor vehicle repair shops	C31	C31-2	B	Medium	2	
Motor /motor vehicle repair shops	C31	C31-3	B	Medium	2	
Motor /motor vehicle repair shops	C31	C31-4	B	Medium	2	
Welding shops	C43	C43-1	B	Low	2	
Domestic wastewater collection systems (sewer lines or lift stations)	D01	D01-4-10	B	Low	2	
Recycling and waste reduction facilities	D57	D57-2	B	High	2	
Septic systems (serves one single-family home)	R02	R02-2-39	B	Low	2	
Highways and roads, paved (cement or asphalt)	X20	X20-8-20	B	Low	2	

Table 6

*Contaminant Source Inventory and Risk Ranking for
Metro Apartments
Sources of Synthetic Organic Chemicals*

PWSID 215524.001

<i>Contaminant Source Type</i>	<i>Contaminant Source ID</i>	<i>CS ID tag</i>	<i>Zone</i>	<i>Risk Ranking for Analysis</i>	<i>Map Number</i>	<i>Comments</i>
Pet groomers	C34	C34-1	A	Low	2	
Domestic wastewater collection systems (sewer lines or lift stations)	D01	D01-1-3	A	Low	2	
Septic systems (serves one single-family home)	R02	R02-1	A	Low	2	
Furniture manufacturing, repair, and finishing shops	C14	C14-1	B	Medium	2	
Domestic wastewater collection systems (sewer lines or lift stations)	D01	D01-4-10	B	Low	2	
Septic systems (serves one single-family home)	R02	R02-2-39	B	Low	2	

Table 7

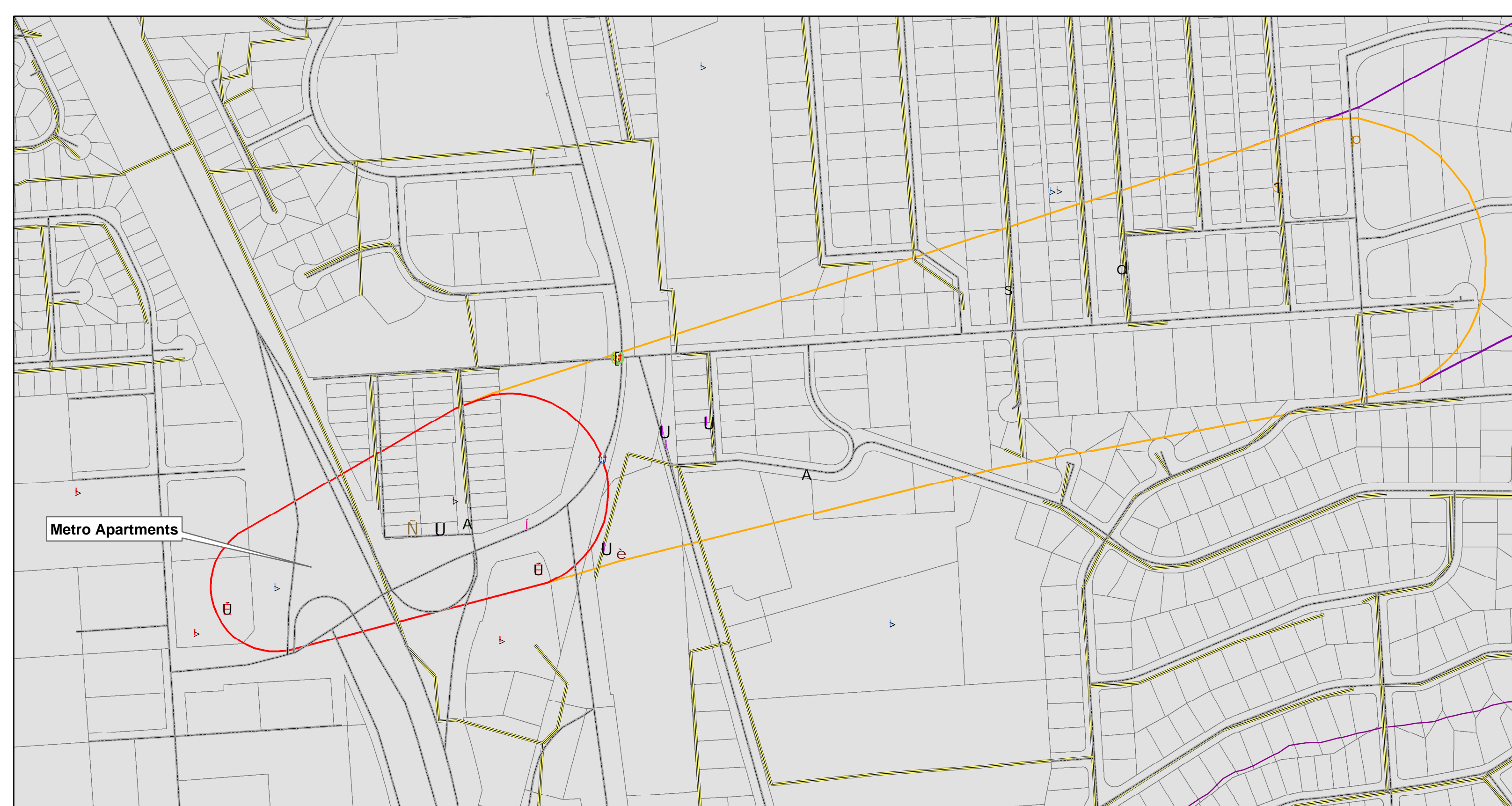
*Contaminant Source Inventory and Risk Ranking for
Metro Apartments
Sources of Other Organic Chemicals*

PWSID 215524.001

<i>Contaminant Source Type</i>	<i>Contaminant Source ID</i>	<i>CS ID tag</i>	<i>Zone</i>	<i>Risk Ranking for Analysis</i>	<i>Map Number</i>	<i>Comments</i>
Gasoline stations (without repair shop)	C15	C15-1	A	Low	2	
Motor /motor vehicle repair shops	C31	C31-1	A	Medium	2	
Domestic wastewater collection systems (sewer lines or lift stations)	D01	D01-1-3	A	Low	2	
Septic systems (serves one single-family home)	R02	R02-1	A	Low	2	
Highways and roads, paved (cement or asphalt)	X20	X20-1-7	A	Low	2	
Car washes with engine or undercarriage cleaning	C08	C08-1	B	Medium	2	
Construction trade areas and materials	C09	C09-1	B	Low	2	
Furniture manufacturing, repair, and finishing shops	C14	C14-1	B	Medium	2	
Motor /motor vehicle repair shops	C31	C31-2	B	Medium	2	
Motor /motor vehicle repair shops	C31	C31-3	B	Medium	2	
Motor /motor vehicle repair shops	C31	C31-4	B	Medium	2	
Welding shops	C43	C43-1	B	Low	2	
Domestic wastewater collection systems (sewer lines or lift stations)	D01	D01-4-10	B	Low	2	
Septic systems (serves one single-family home)	R02	R02-2-39	B	Low	2	
Highways and roads, paved (cement or asphalt)	X20	X20-8-20	B	Low	2	
Motor vehicle/general storage yards/facilities	X27	X27-1	B	Low	2	

APPENDIX C

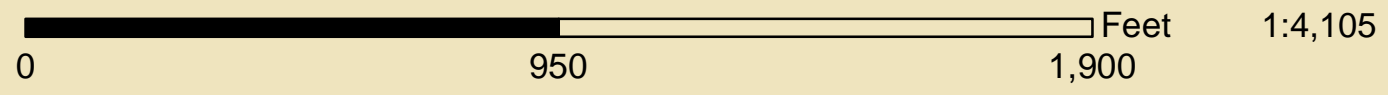
Metro Apartments Drinking Water Protection Area and Potential and Existing Contaminant Sources (Map 2)



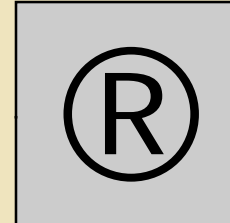
Metro Apartments

Map 2- Metro Apartments: Potential Contaminant Inventory

PWSID: 215524



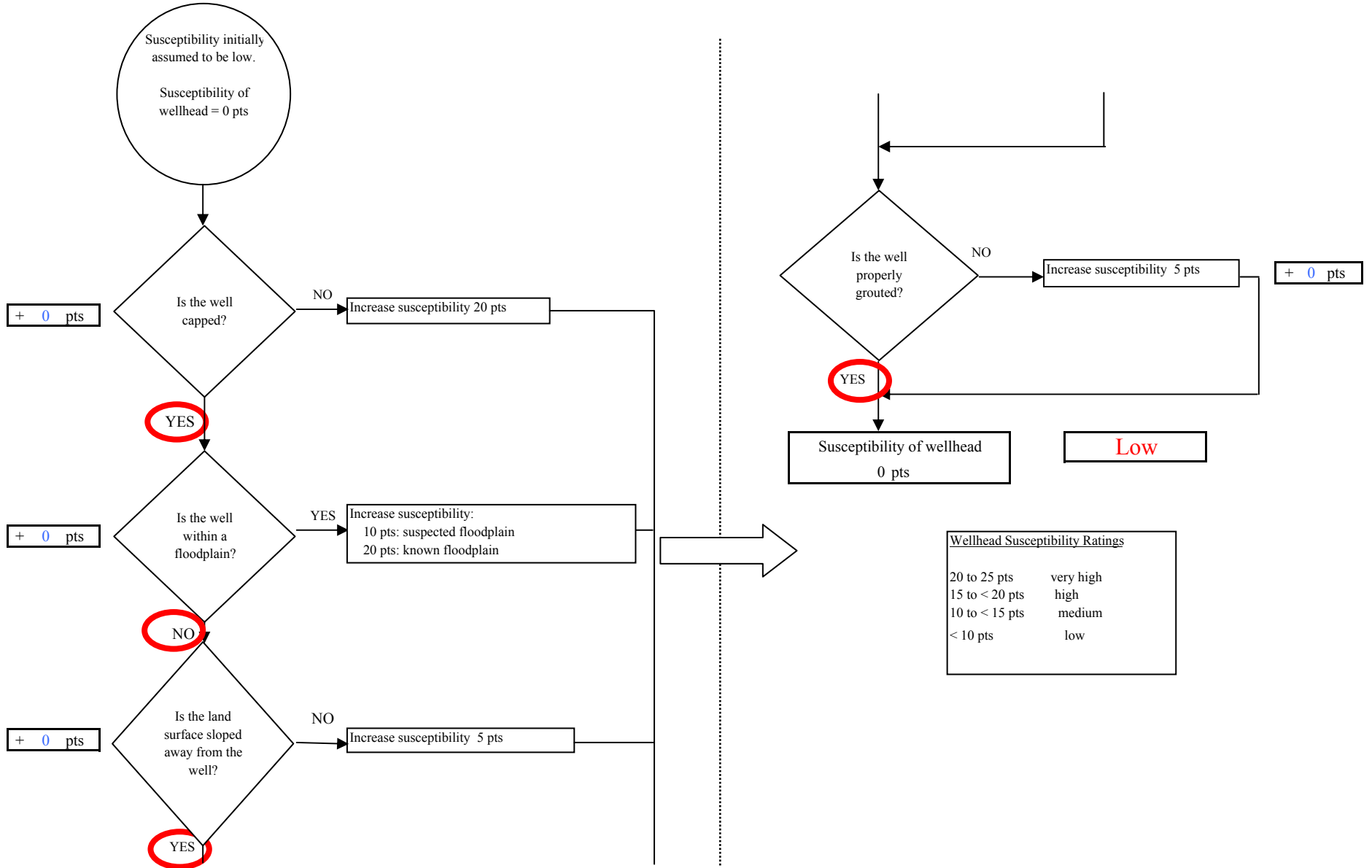
Legend	
	Class A Public Water System
	Class B Public Water System
	Zone_A_Protection_Area
	<all other values>
	Zone_C_Protection_Area
DWPP_Contaminated_Sites selection	
CONTAM_ID	
	C08
	C09
	C14
	C15
	C16
	C18
	C31
	C34
	C43
	D42
	D57
	T08
	T12
	U04
	U07
	X27
	X49
	sewers



APPENDIX D

Vulnerability Analysis for Metro Apartments Public Drinking Water Source (Charts 1-14)

Chart 1. Susceptibility of the wellhead - Metro Apartments



Wellhead Susceptibility Ratings	
20 to 25 pts	very high
15 to < 20 pts	high
10 to < 15 pts	medium
< 10 pts	low

Chart 2. Susceptibility of the aquifer - Metro Apartments

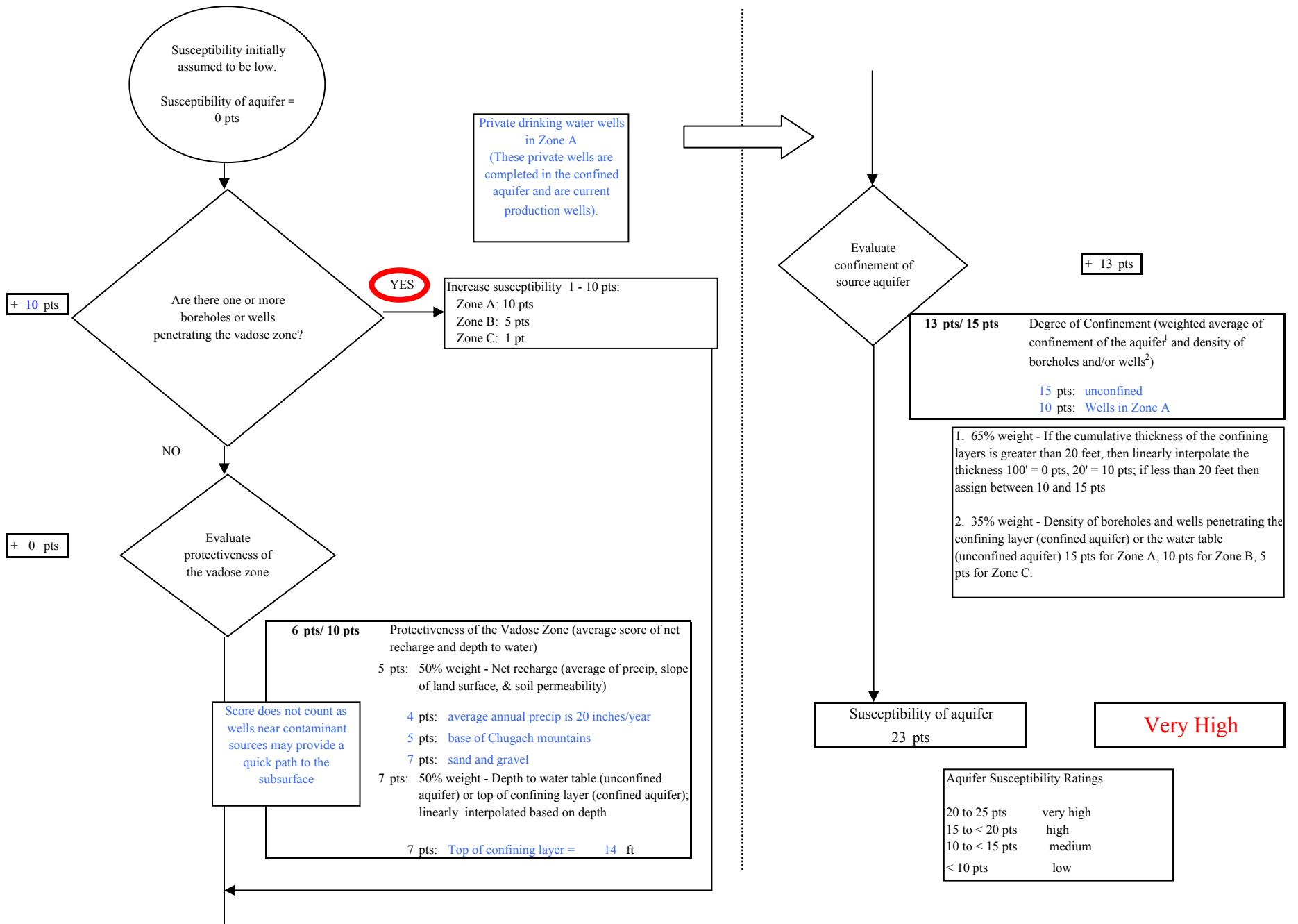
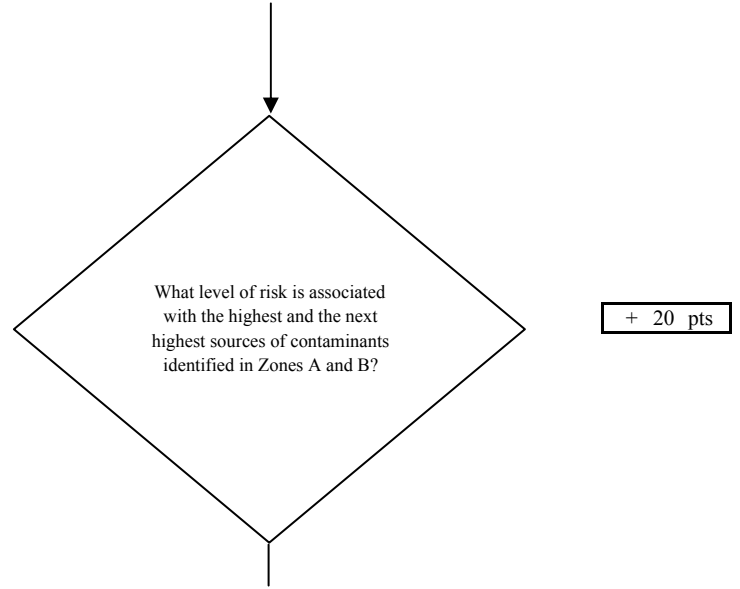
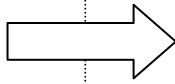
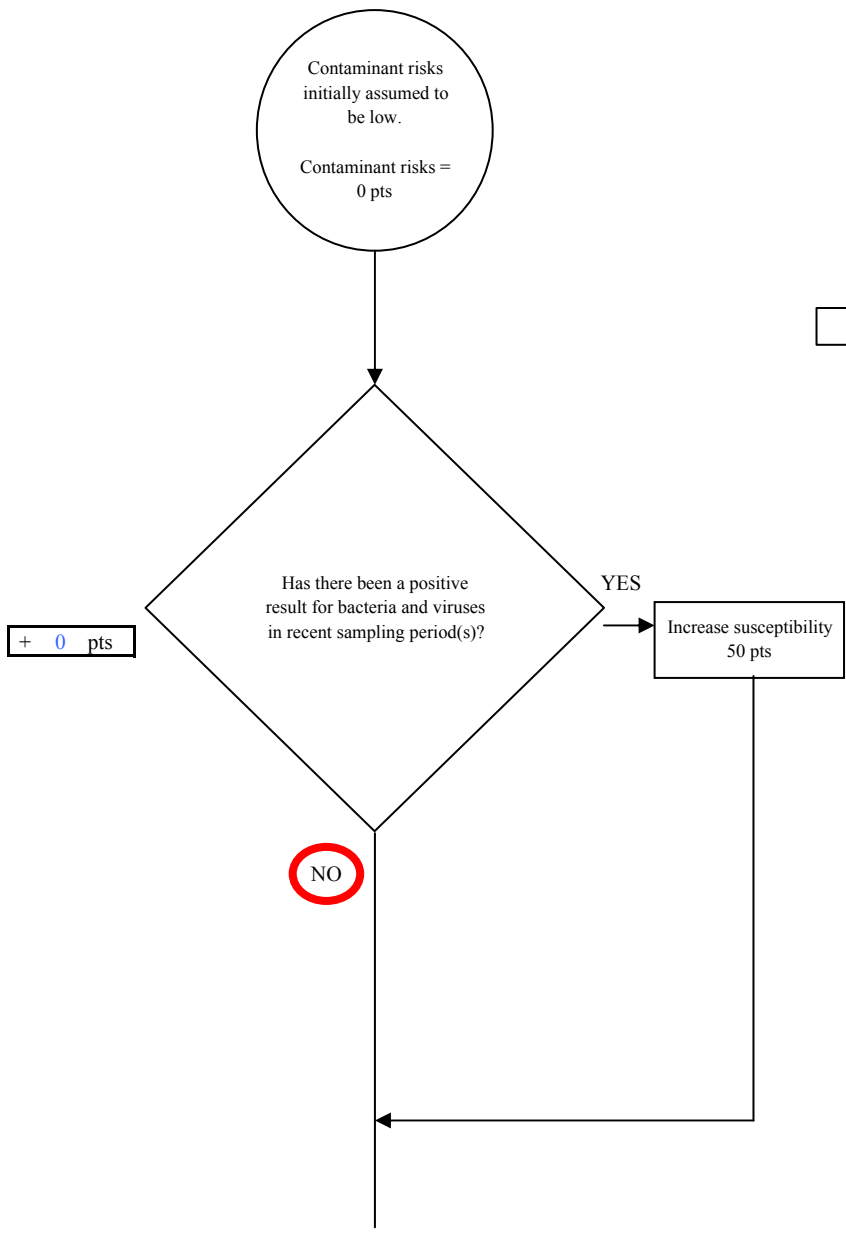


Chart 3. Contaminant risks for Metro Apartments - Bacteria & Viruses



Risk Rankings for Contaminant Sources Identified in Zones A and B

	Zone A	Zone B	Total
Very High(s)	0	0	0
High(s)	0	0	0
Medium(s)	1	0	1
Low(s)	2	6	8

	LOW 10 pts	MEDIUM 20 pts	HIGH 30 pts	VERY HIGH 40 pts
LOW	≥ 10 sources + 10 pts	≥ 10 sources + 5 pts	≥ 20 sources + 5 pts	----
MEDIUM	----	≥ 2 sources + 5 pts	≥ 5 sources + 5 pts	≥ 10 sources + 5 pts
HIGH	----	----	≥ 1 source + 10 pts	≥ 2 sources + 10 pts
VERY HIGH	----	----	----	≥ 1 source + 10 pts

Matrix Score 20

Note: Septic systems, sewerlines, and roads are each assigned a risk ranking for each individual contaminant source in the CSI. The VA, however, counts these contaminant sources as a group and assigns a calculated number of either "lows" or "mediums" based on the density.

Chart 3. Contaminant risks for Metro Apartments - Bacteria & Viruses

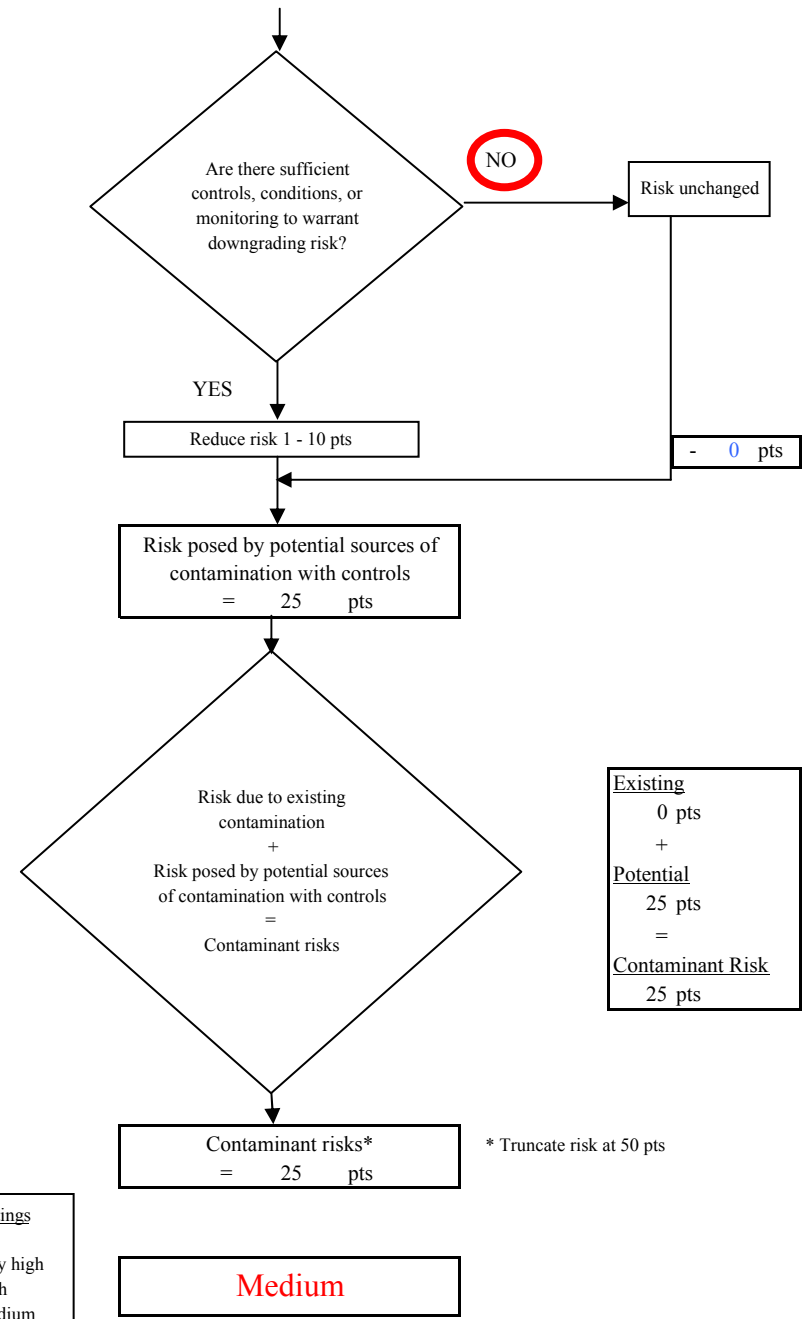
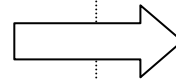
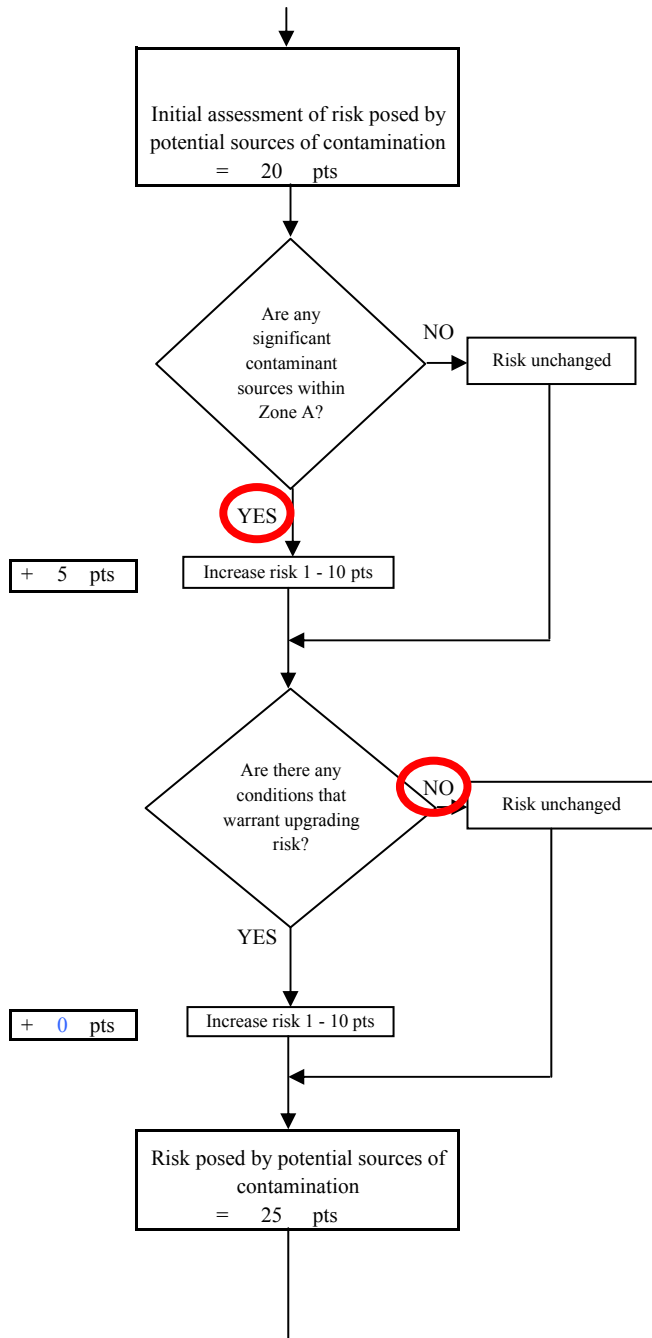


Chart 4. Vulnerability analysis for Metro Apartments - Bacteria & Viruses

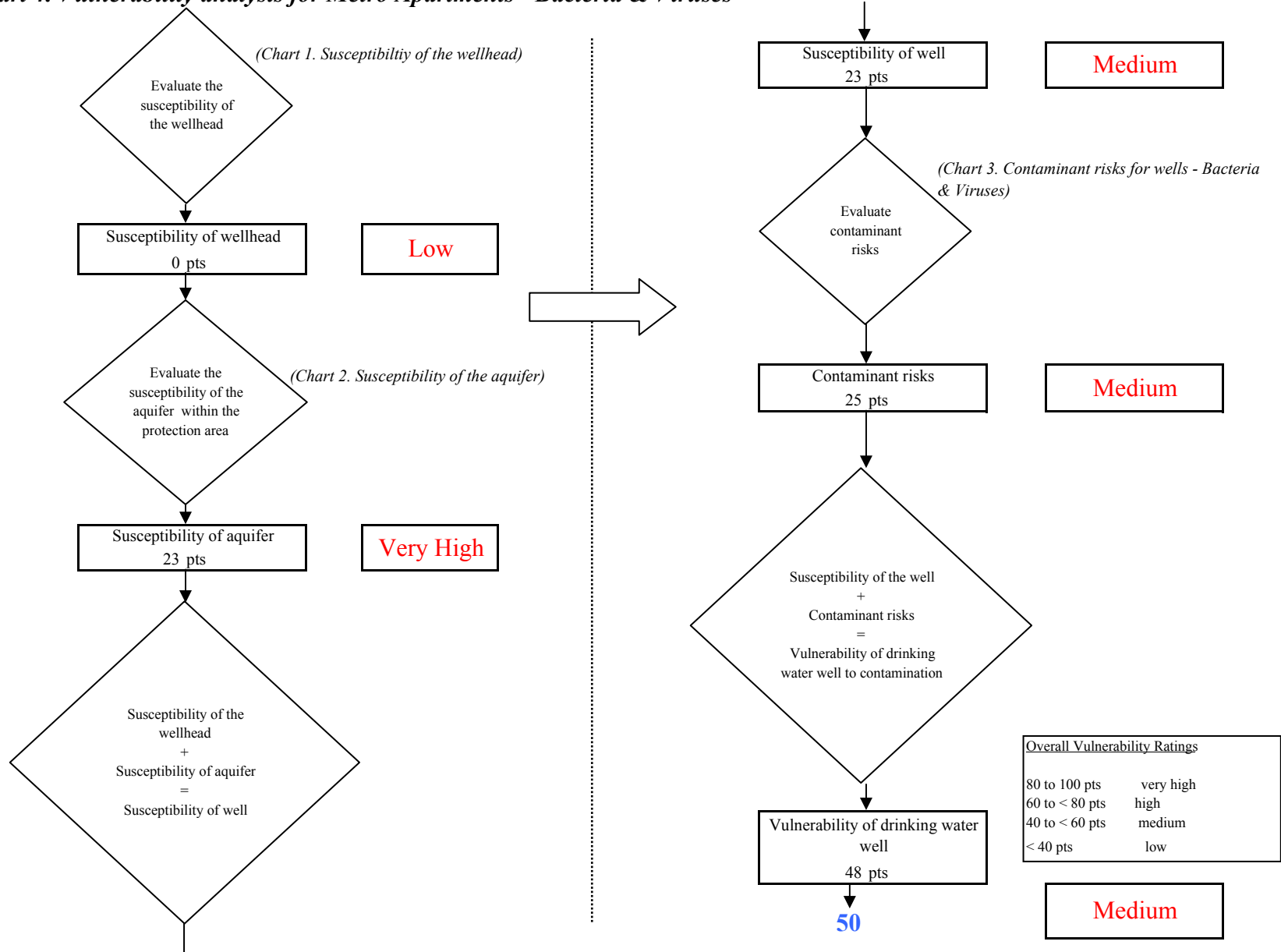


Chart 5. Contaminant risks for Metro Apartments - Nitrates and Nitrites

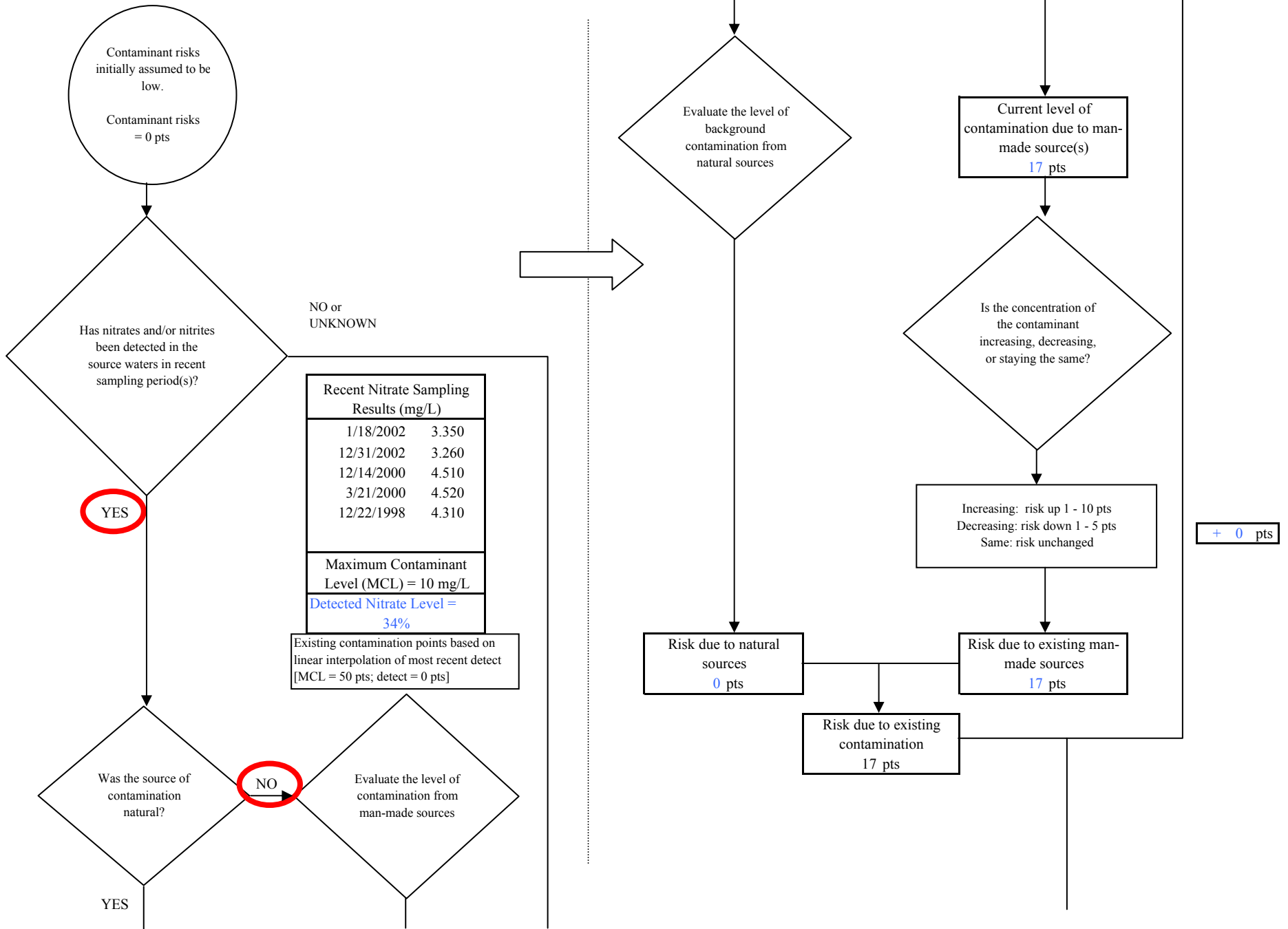
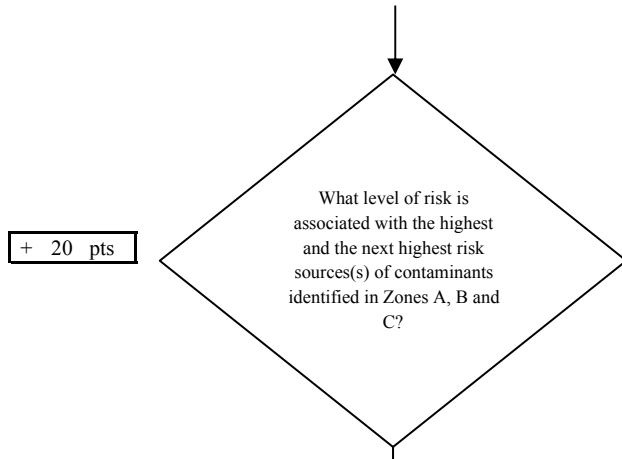


Chart 5. Contaminant risks for Metro Apartments - Nitrates and Nitrites



Risk Levels for Contaminant Sources identified in Zones A, B and C			
	Zone A	Zones B&C	Total
Very Highs(s)	0	0	0
High(s)	0	0	0
Medium(s)	1	0	1
Low(s)	2	6	8

	LOW 10 pts	MEDIUM 20 pts	HIGH 30 pts	VERY HIGH 40 pts
LOW	≥ 10 sources + 10 pts	≥ 10 sources + 5 pts	≥ 20 sources + 5 pts	----
MEDIUM	----	≥ 2 sources + 5 pts	≥ 5 sources + 5 pts	≥ 10 sources + 5 pts
HIGH	----	----	≥ 1 source + 10 pts	≥ 2 sources + 10 pts
VERY HIGH	----	----	----	≥ 1 source + 10 pts

Matrix Score 20

Note: Septic systems, sewerlines, and roads are each assigned a risk ranking for each individual contaminant source in the CSI. The VA, however, counts these contaminant sources as a group and assigns a calculated number of either "lows" or "mediums" based on the density.

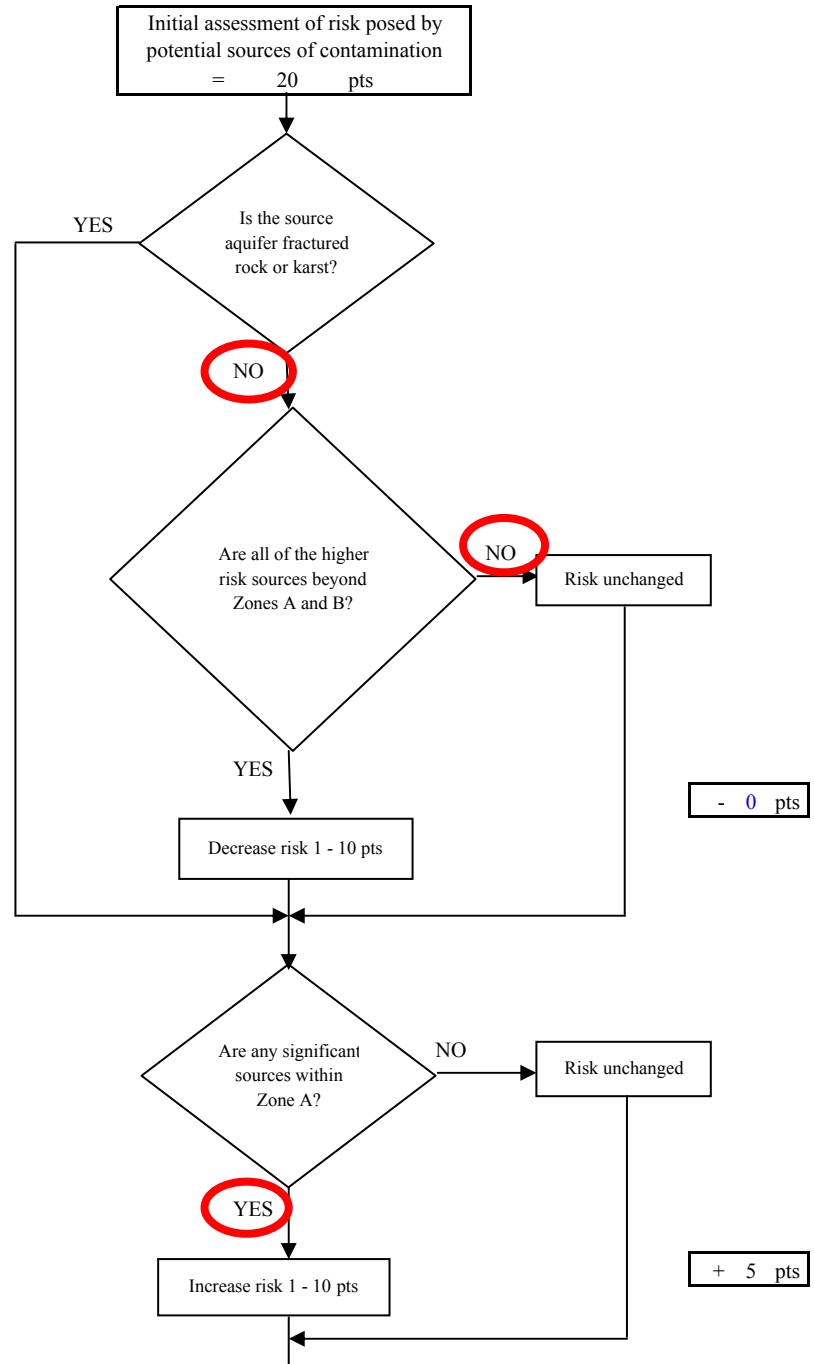
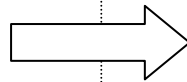


Chart 5. Contaminant risks for Metro Apartments - Nitrates and Nitrites

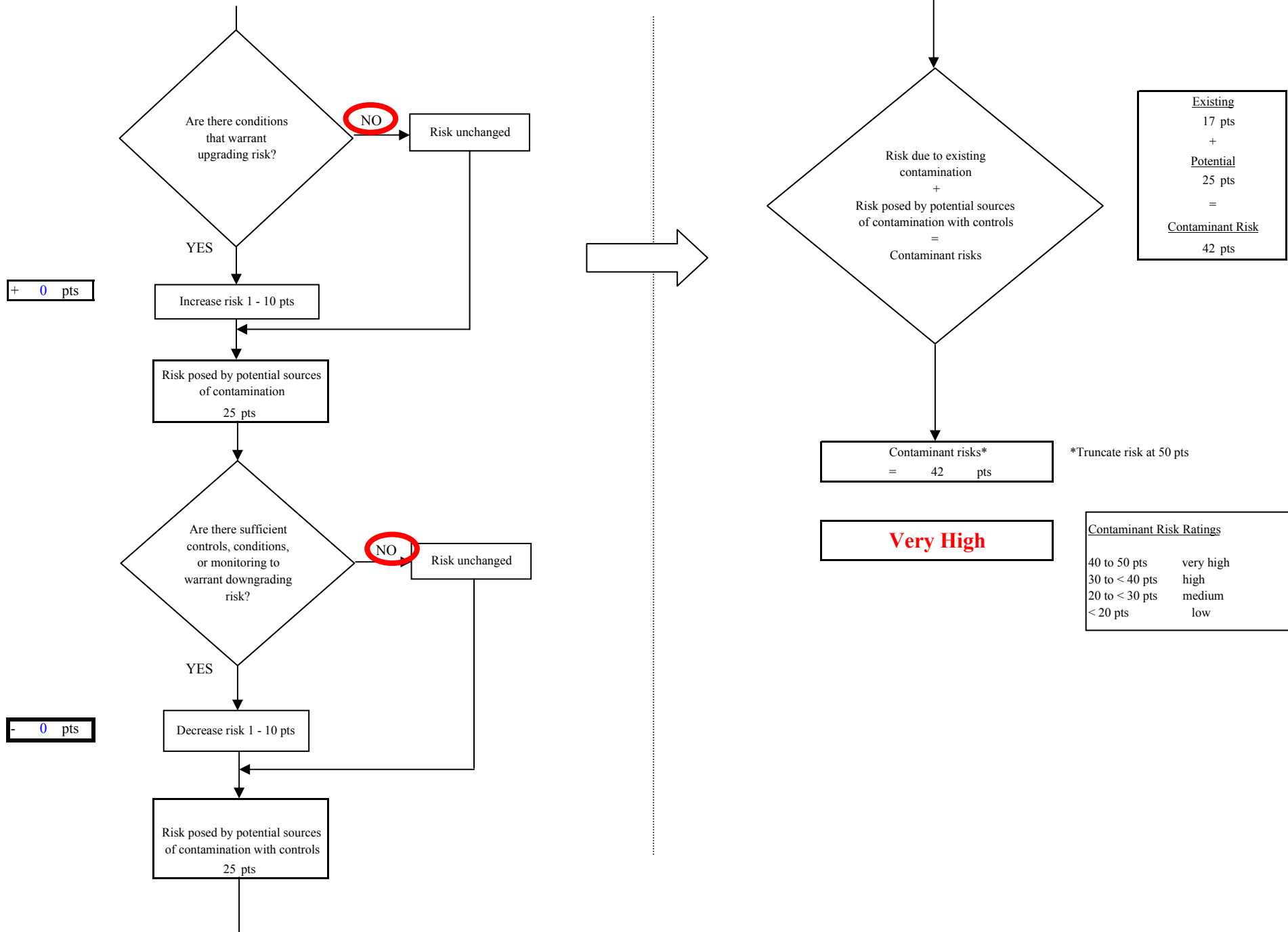


Chart 6. Vulnerability analysis for Metro Apartments - Nitrates and Nitrites

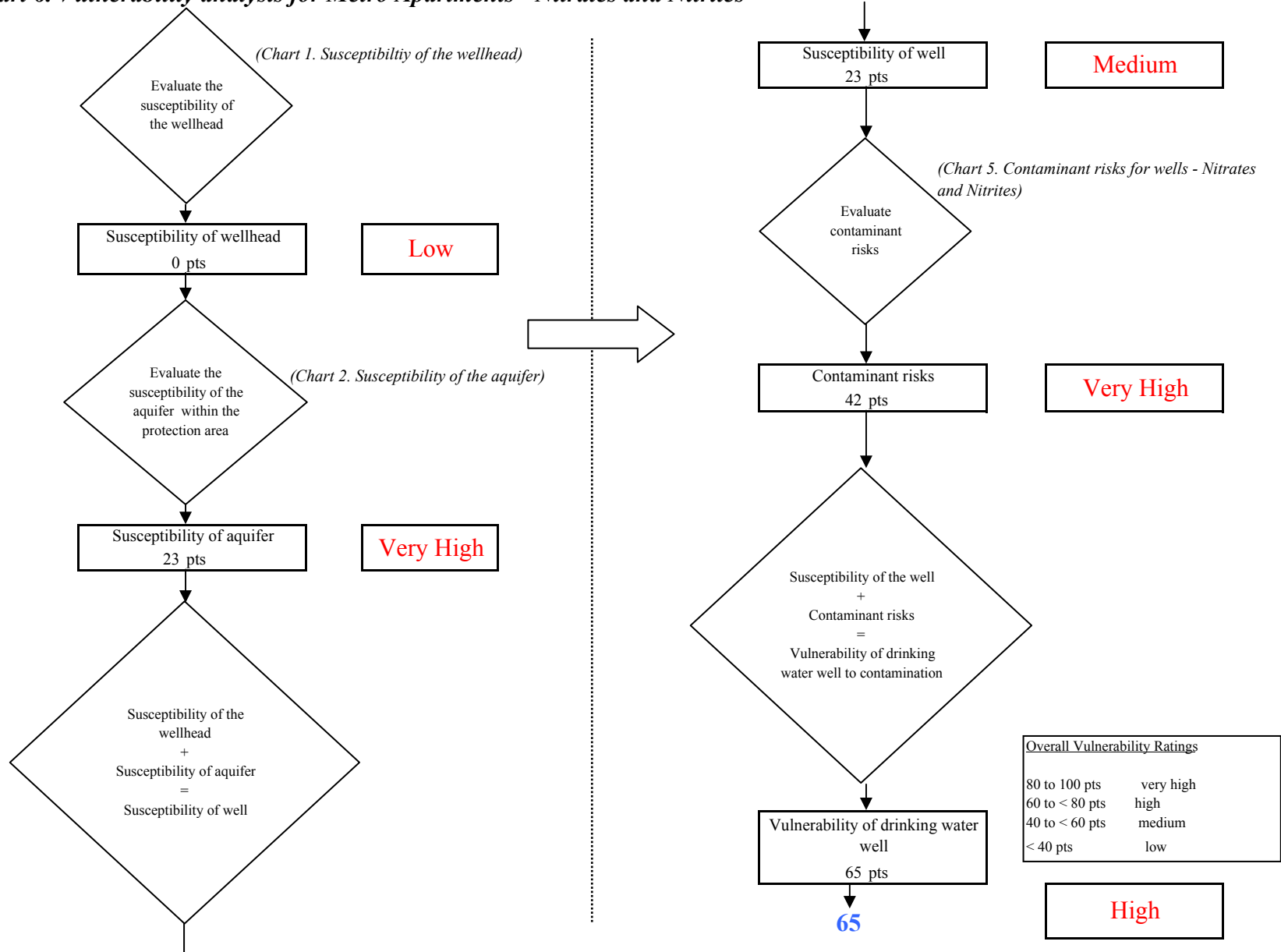


Chart 7. Contaminant risks for Metro Apartments - Volatile Organic Chemicals

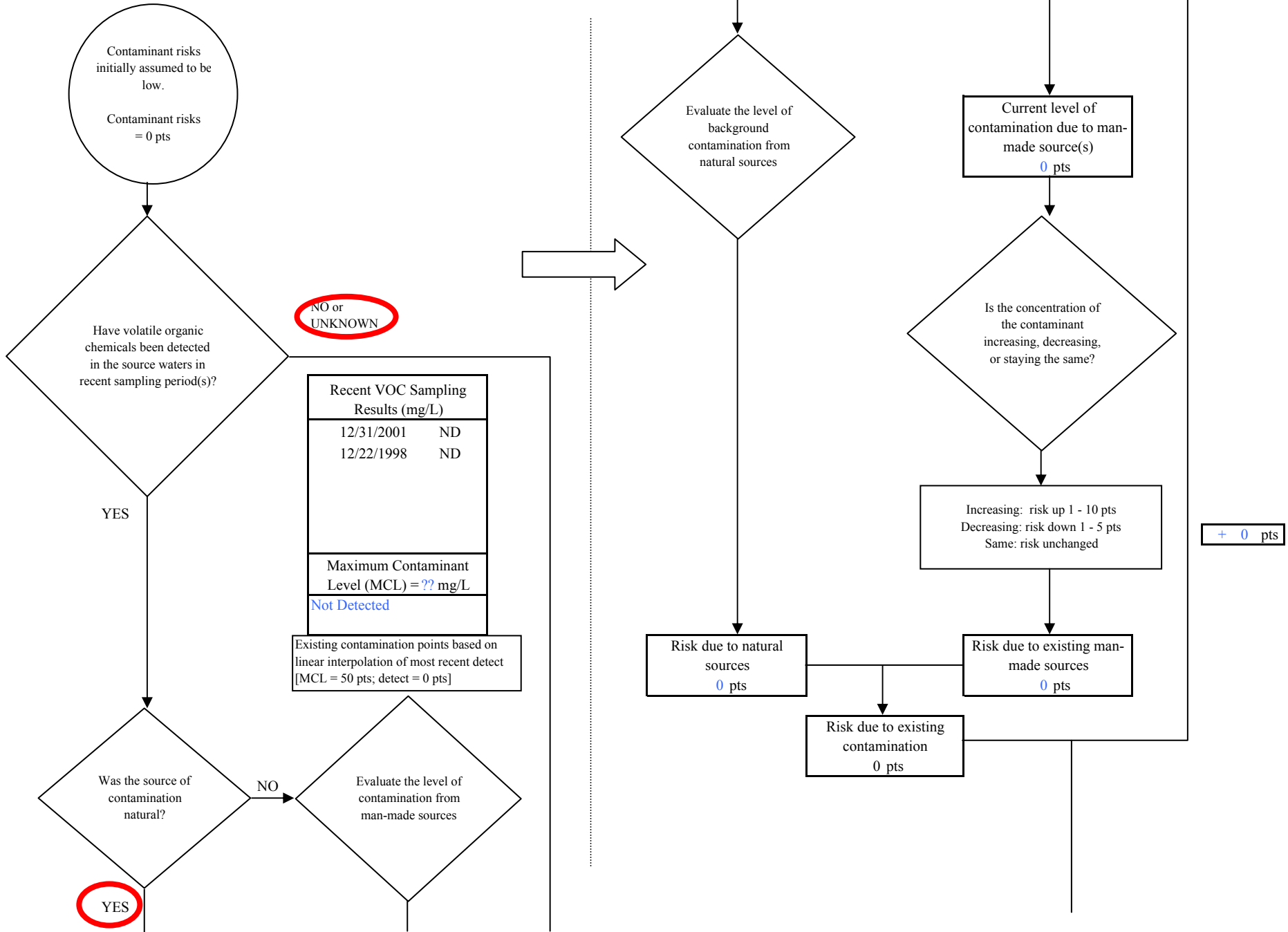
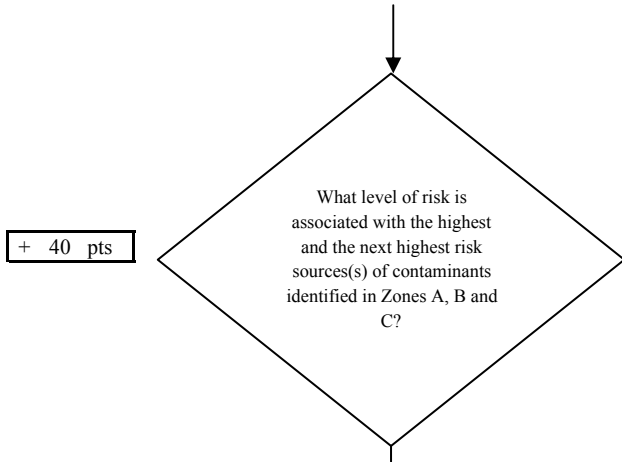


Chart 7. Contaminant risks for Metro Apartments - Volatile Organic Chemicals



Risk Levels for Contaminant Sources identified in Zones A, B and C			
	Zone A	Zones B&C	Total
Very Highs(s)	0	0	0
High(s)	3	1	4
Medium(s)	1	5	6
Low(s)	4	5	9

	LOW 10 pts	MEDIUM 20 pts	HIGH 30 pts	VERY HIGH 40 pts
LOW	≥ 10 sources + 10 pts	≥ 10 sources + 5 pts	≥ 20 sources + 5 pts	----
MEDIUM	----	≥ 2 sources + 5 pts	≥ 5 sources + 5 pts	≥ 10 sources + 5 pts
HIGH	----	----	≥ 1 source + 10 pts	≥ 2 sources + 10 pts
VERY HIGH	----	----	----	≥ 1 source + 10 pts

Matrix Score 40

Note: Septic systems, sewerlines, and roads are each assigned a risk ranking for each individual contaminant source in the CSI. The VA, however, counts these contaminant sources as a group and assigns a calculated number of either "lows" or "mediums" based on the density.

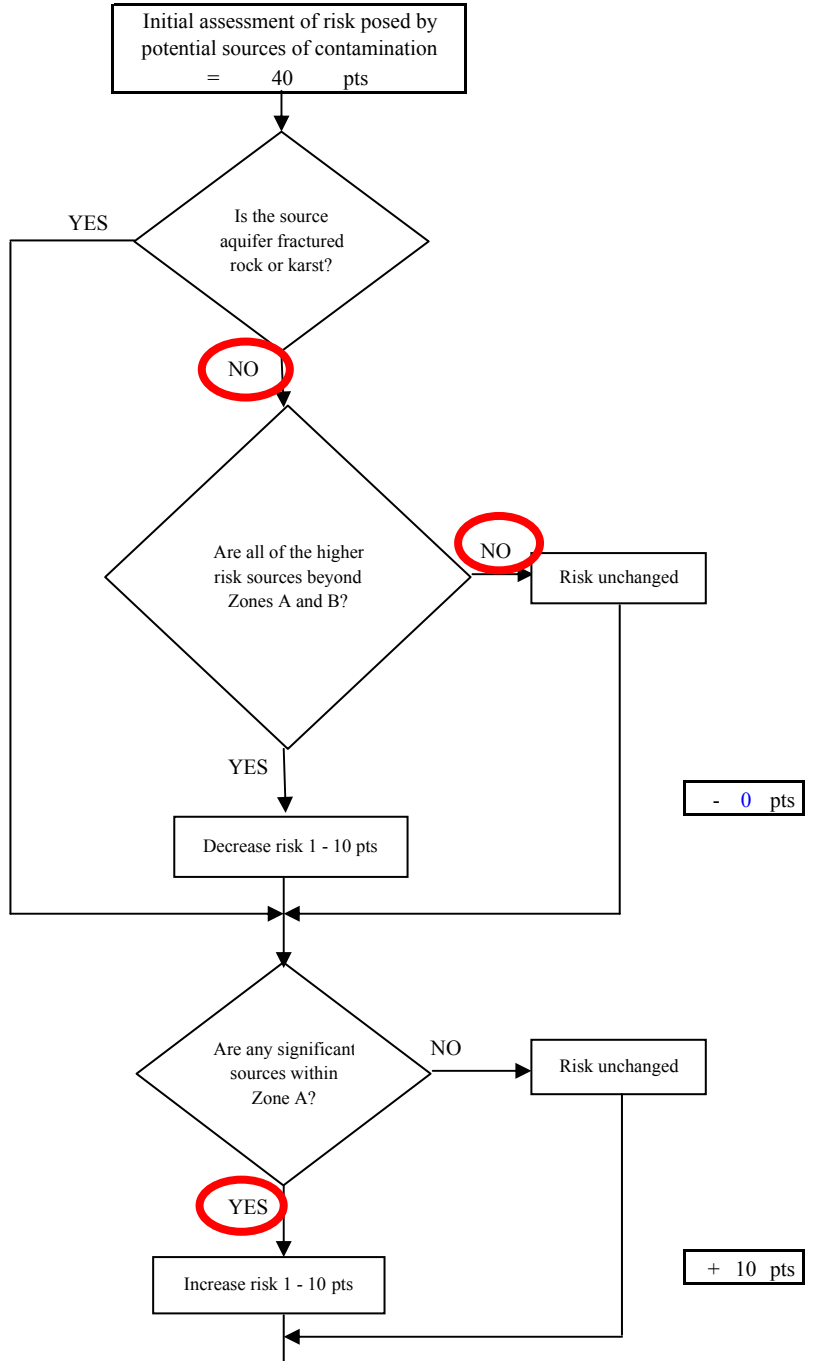
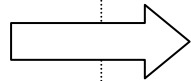


Chart 7. Contaminant risks for Metro Apartments - Volatile Organic Chemicals

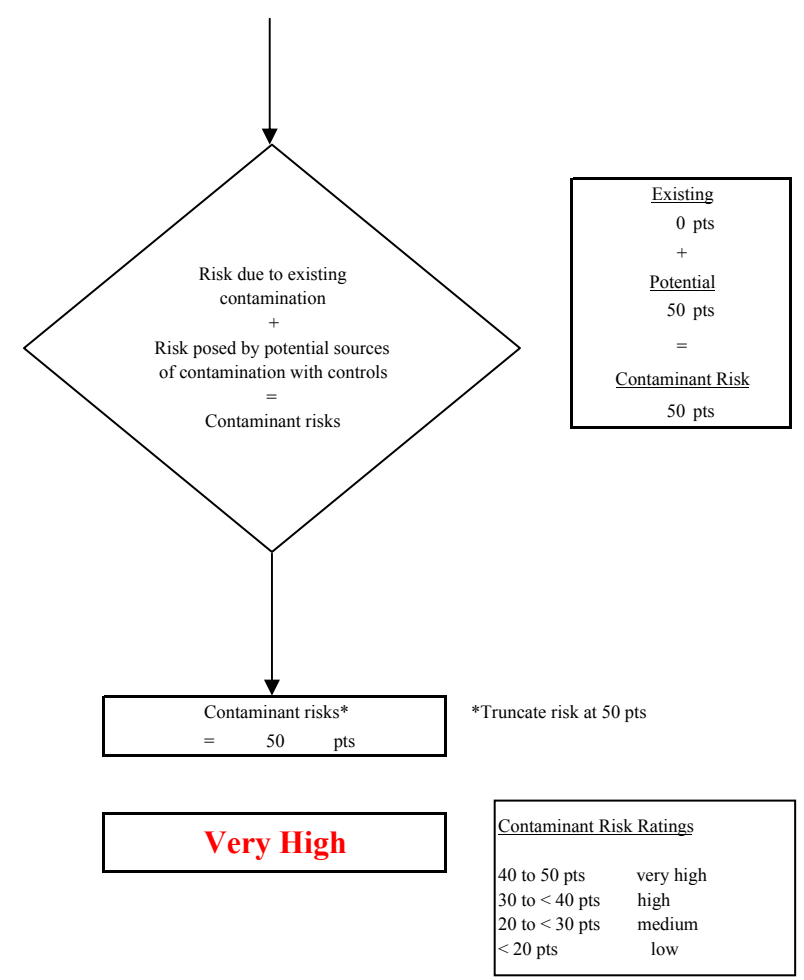
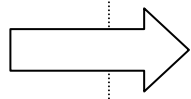
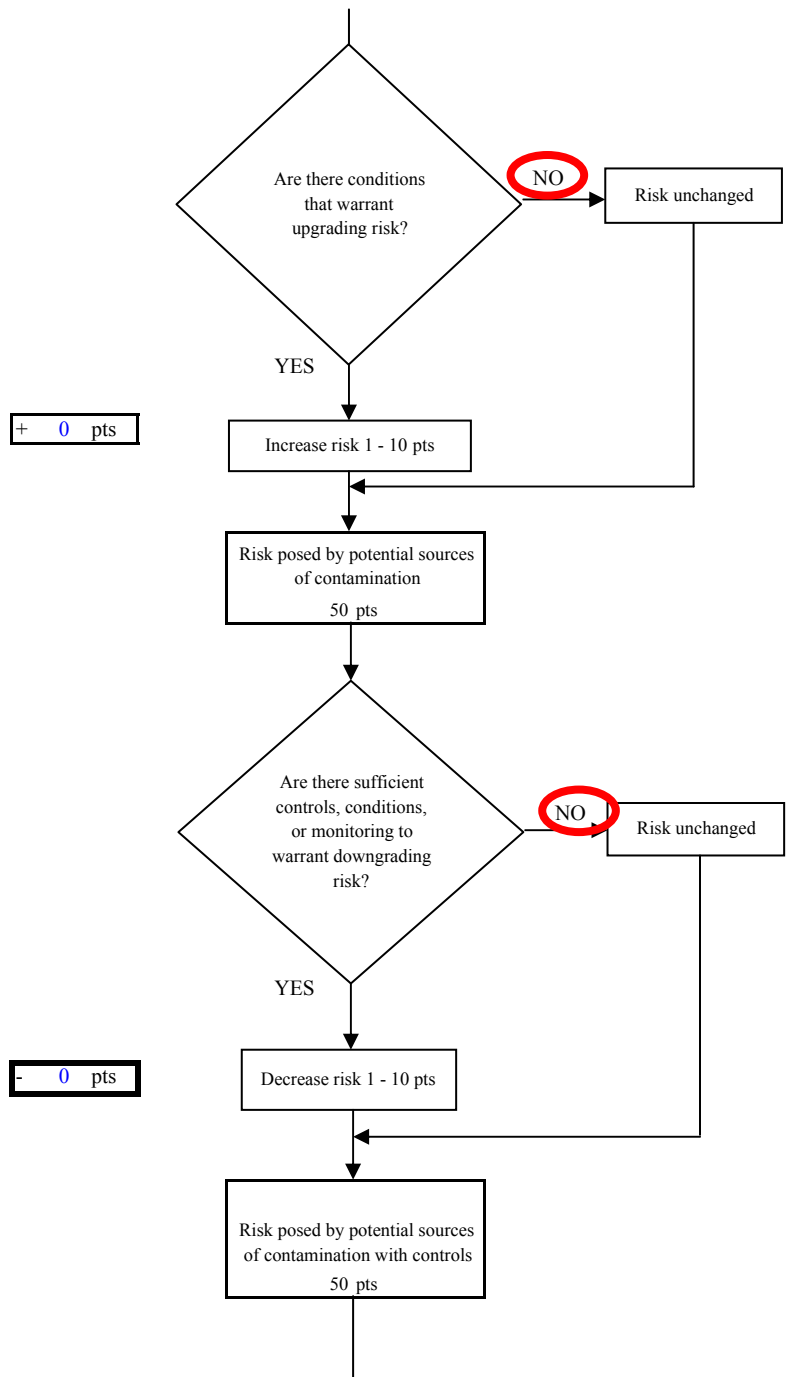


Chart 8. Vulnerability analysis for Metro Apartments - Volatile Organic Chemicals

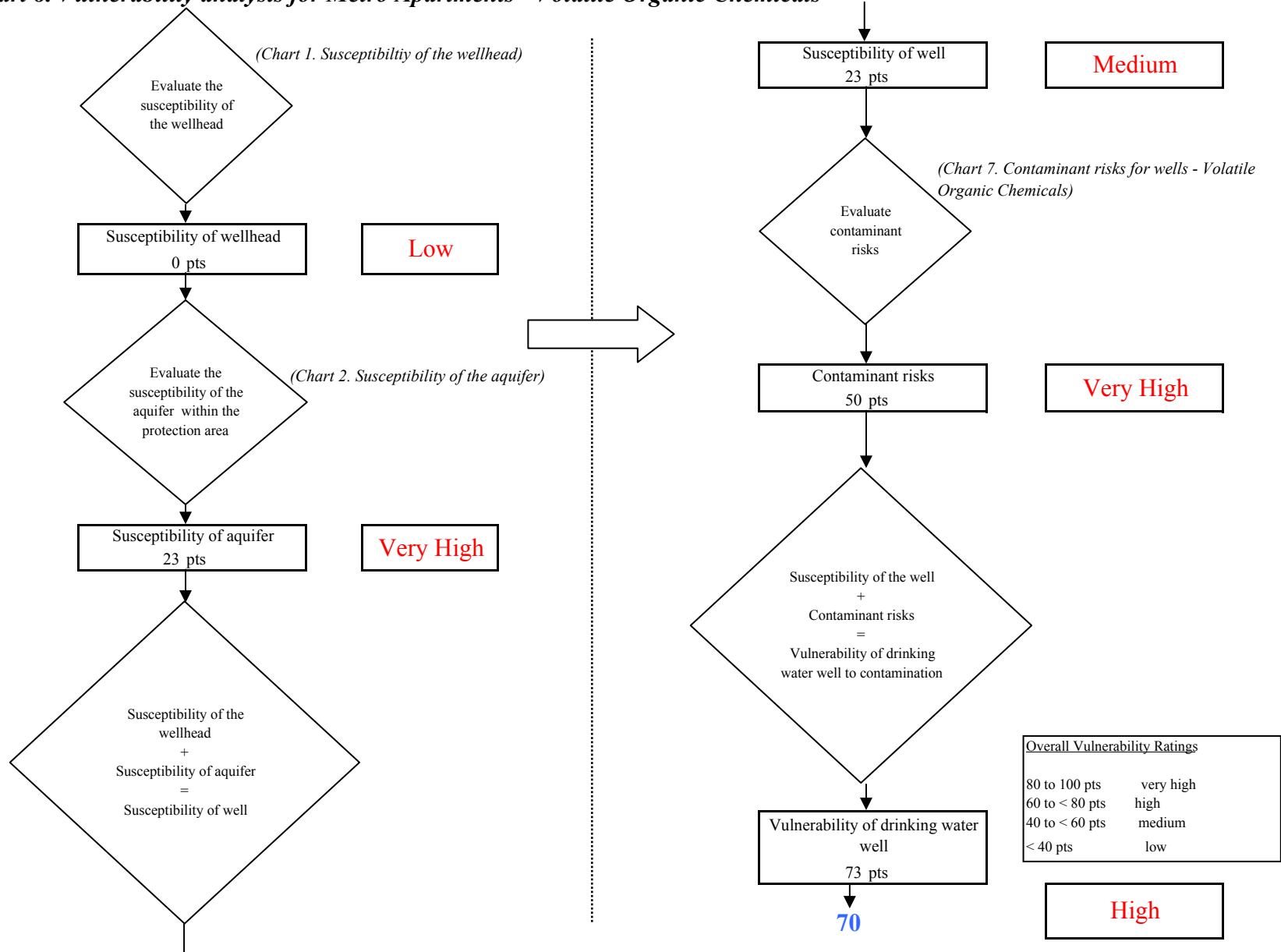


Chart 9. Contaminant risks for Metro Apartments - Heavy Metals, Cyanide and Other Inorganic Chemicals

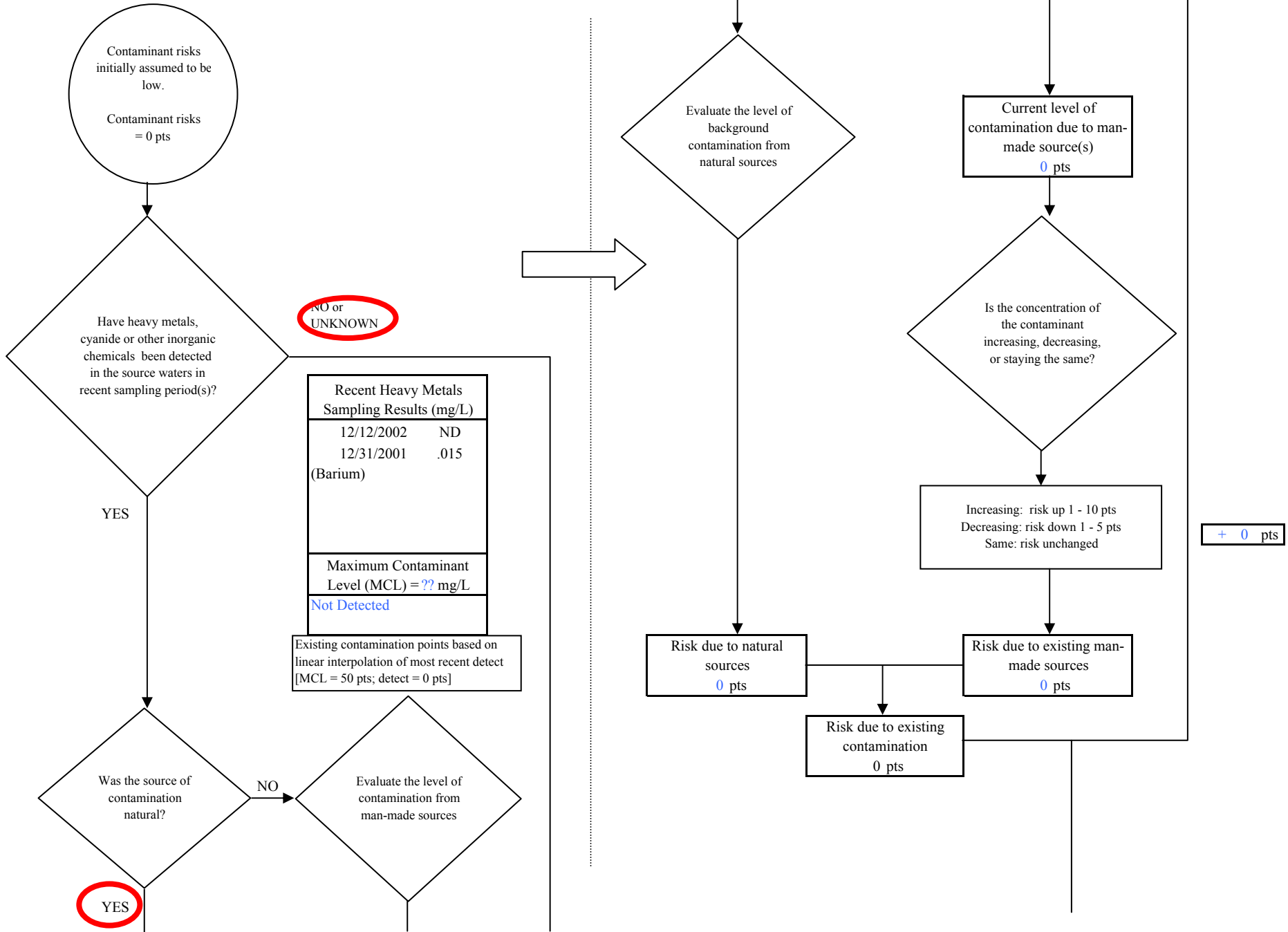
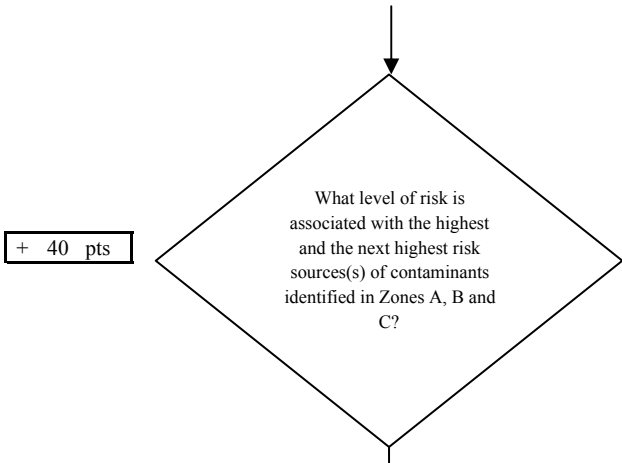


Chart 9. Contaminant risks for Metro Apartments - Heavy Metals, Cyanide and Other Inorganic Chemicals



+ 40 pts

Risk Levels for Contaminant Sources identified in Zones A, B and C			
	Zone A	Zones B&C	Total
Very High(s)	0	0	0
High(s)	1	1	2
Medium(s)	2	4	6
Low(s)	4	6	10

	LOW 10 pts	MEDIUM 20 pts	HIGH 30 pts	VERY HIGH 40 pts
LOW	≥ 10 sources + 10 pts	≥ 10 sources + 5 pts	≥ 20 sources + 5 pts	----
MEDIUM	----	≥ 2 sources + 5 pts	≥ 5 sources + 5 pts	≥ 10 sources + 5 pts
HIGH	----	----	≥ 1 source + 10 pts	≥ 2 sources + 10 pts
VERY HIGH	----	----	----	≥ 1 source + 10 pts

Matrix Score 40

Note: Septic systems, sewerlines, and roads are each assigned a risk ranking for each individual contaminant source in the CSI. The VA, however, counts these contaminant sources as a group and assigns a calculated number of either "lows" or "mediums" based on the density.

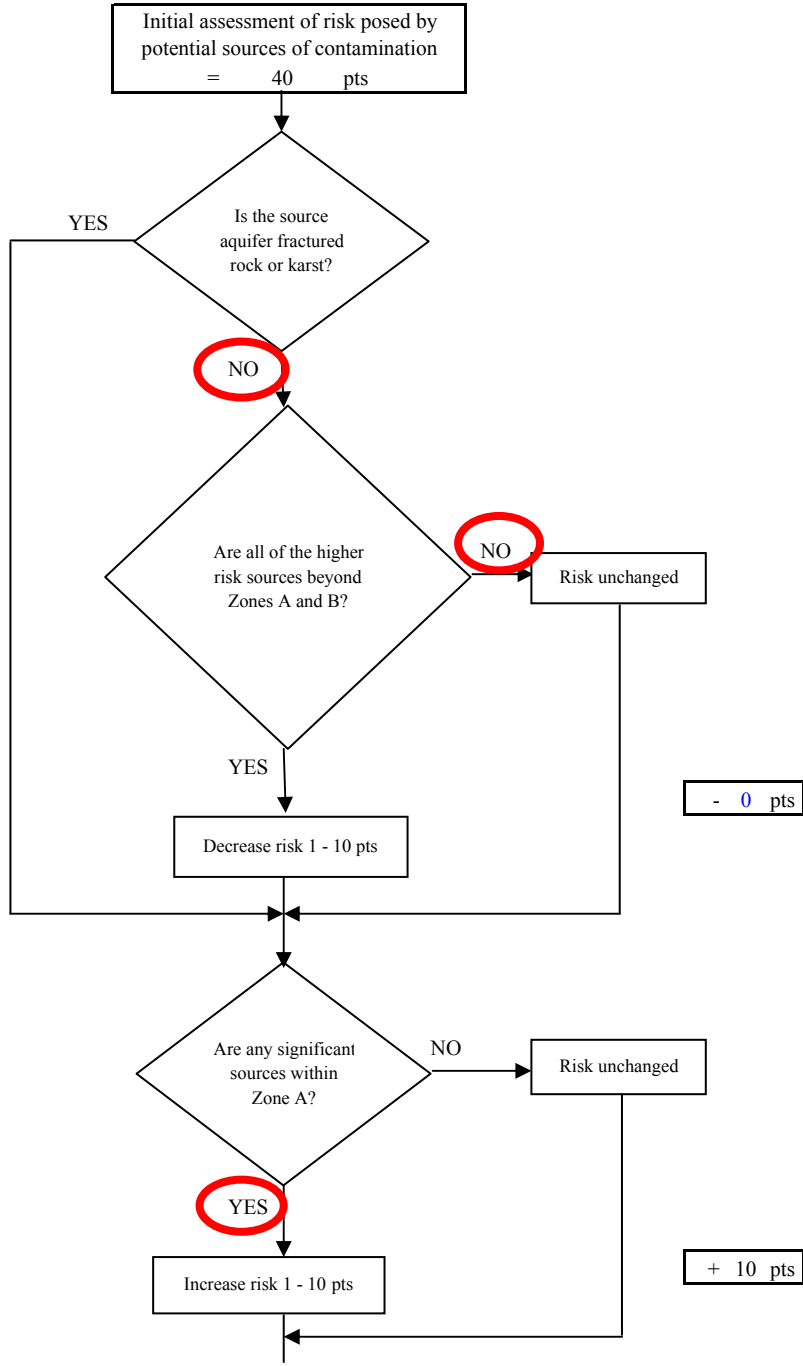
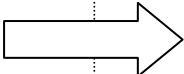


Chart 9. Contaminant risks for Metro Apartments - Heavy Metals, Cyanide and Other Inorganic Chemicals

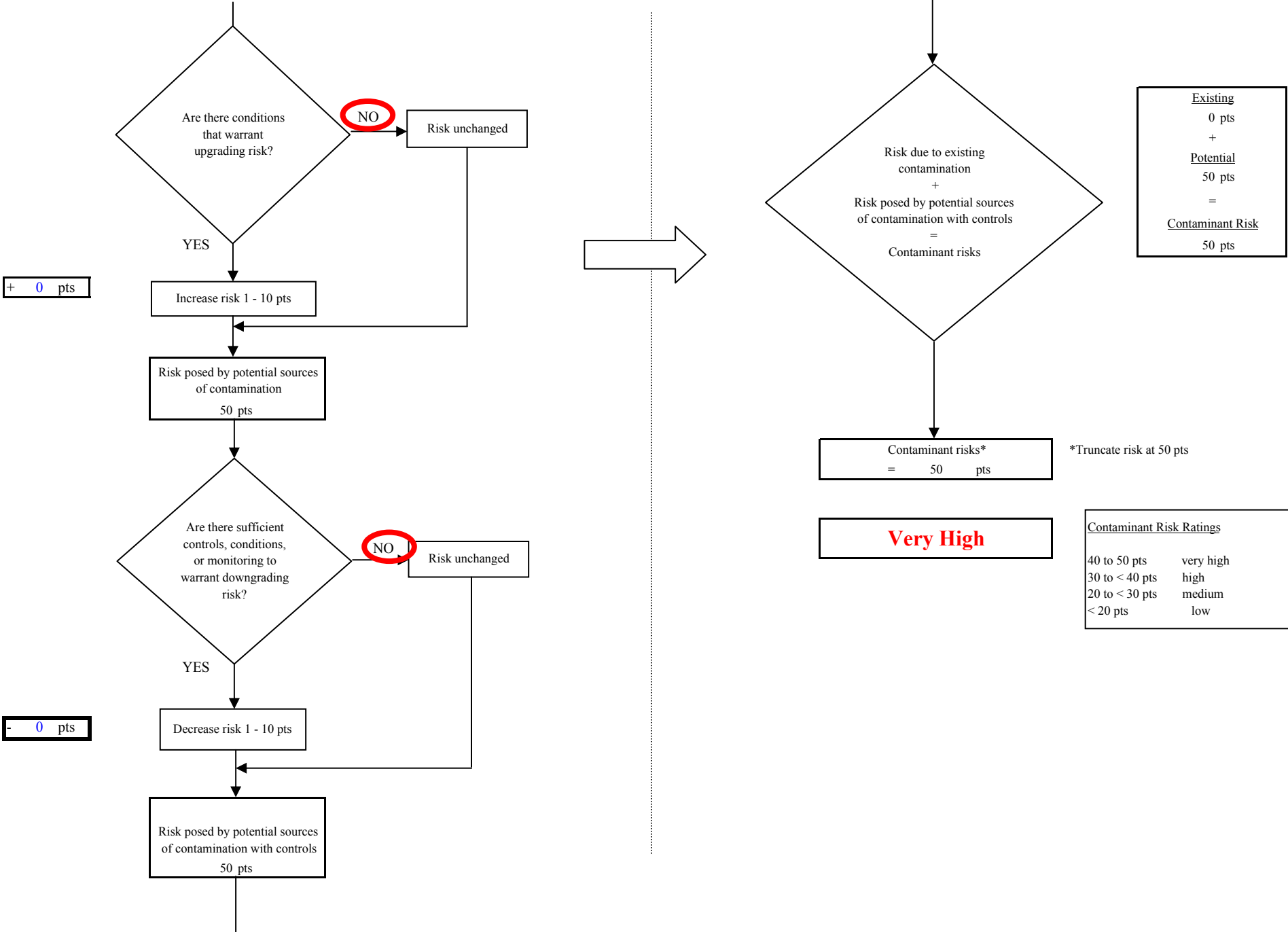


Chart 10. Vulnerability analysis for Metro Apartments - Heavy Metals, Cyanide and Other Inorganic Chemicals

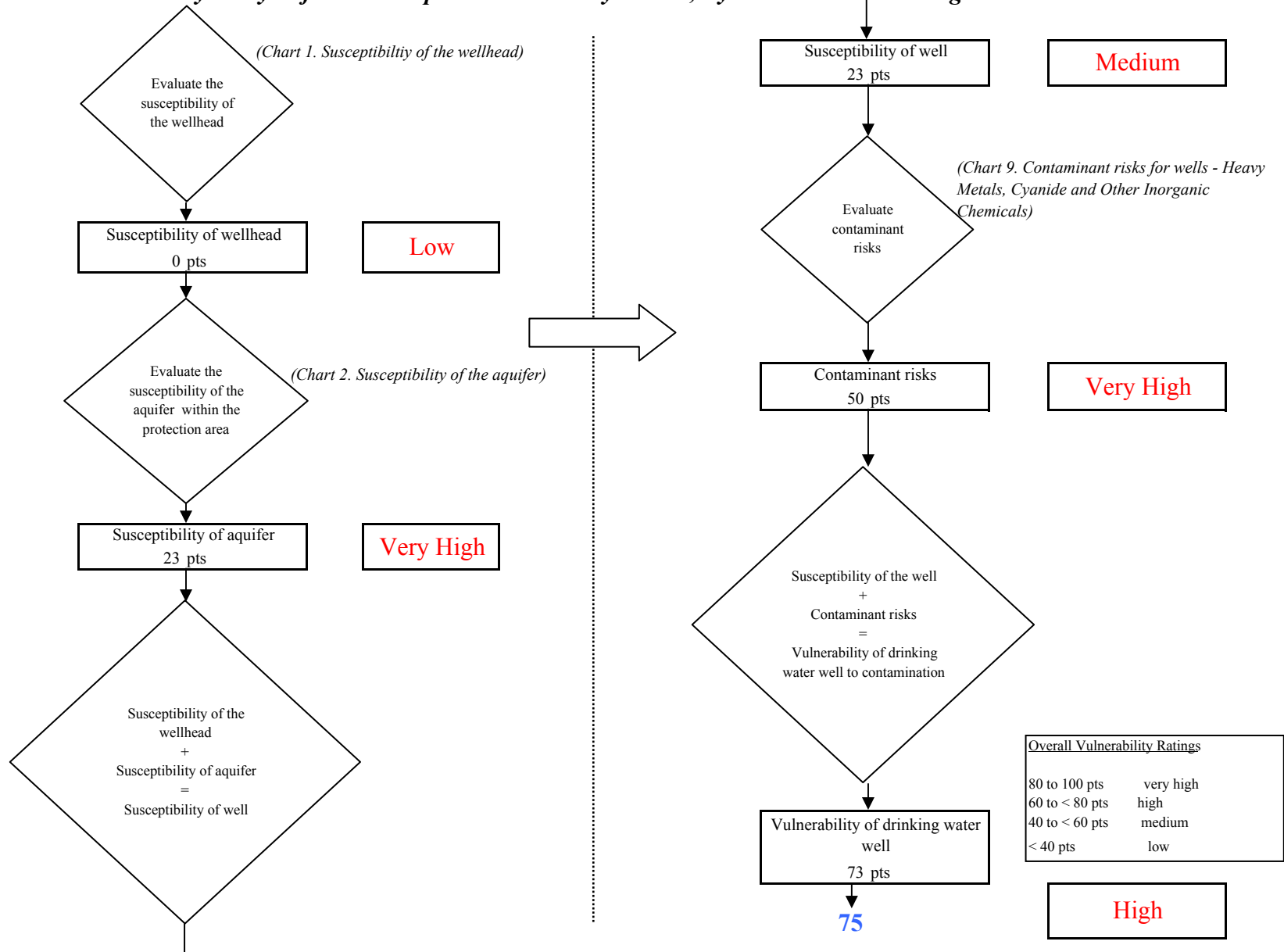


Chart 11. Contaminant risks for Metro Apartments - Synthetic Organic Chemicals

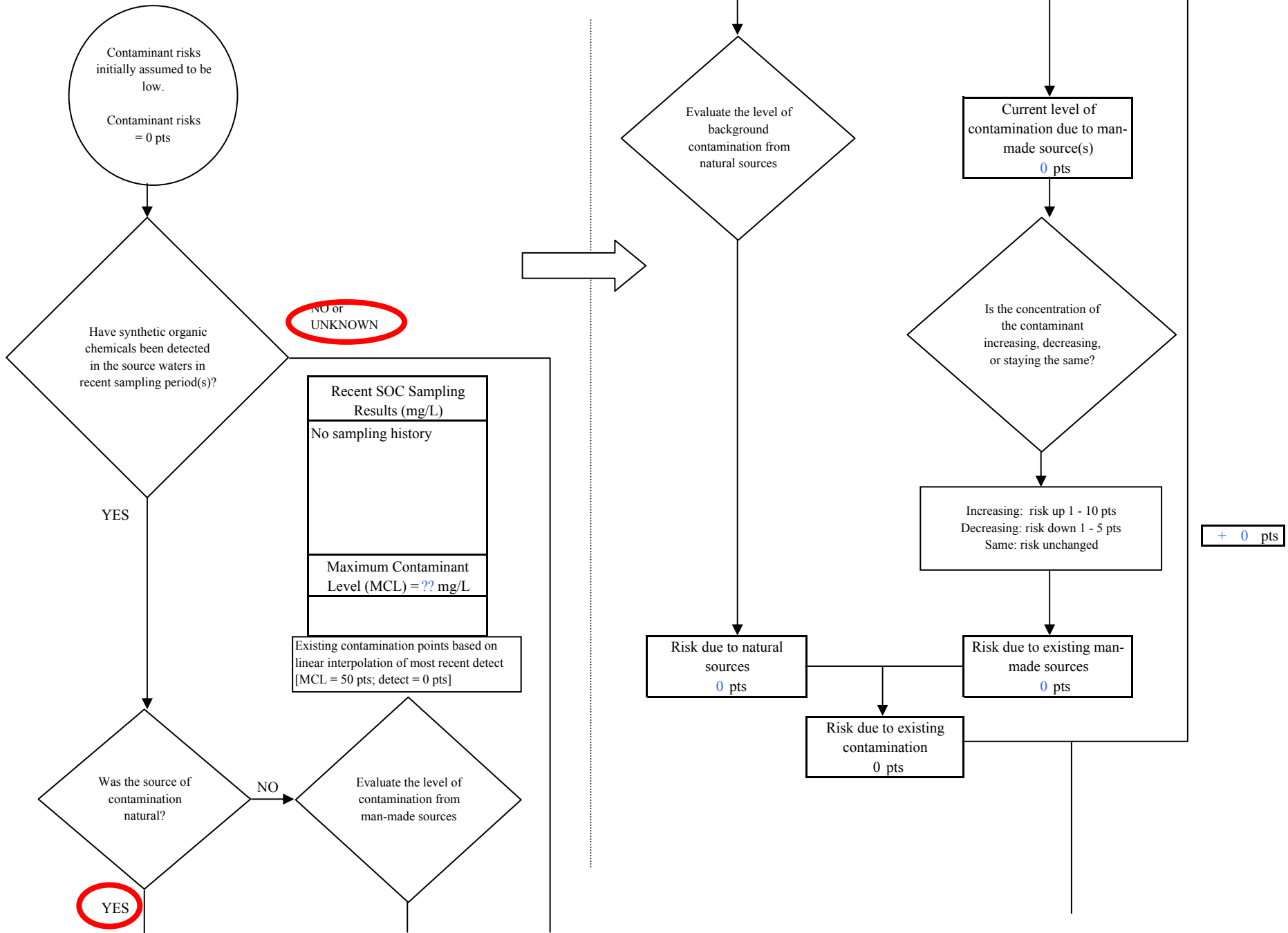
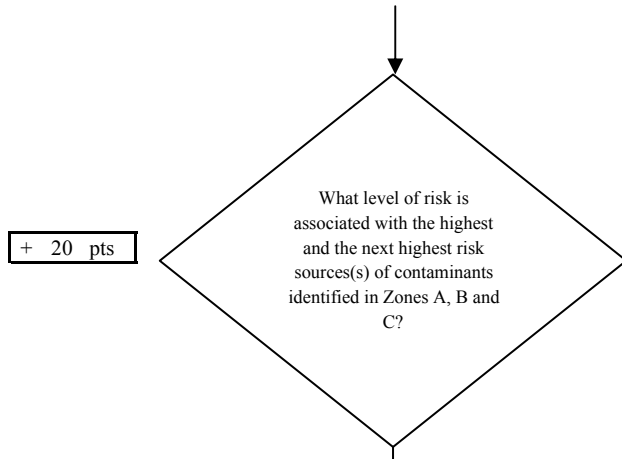


Chart 11. Contaminant risks for Metro Apartments - Synthetic Organic Chemicals



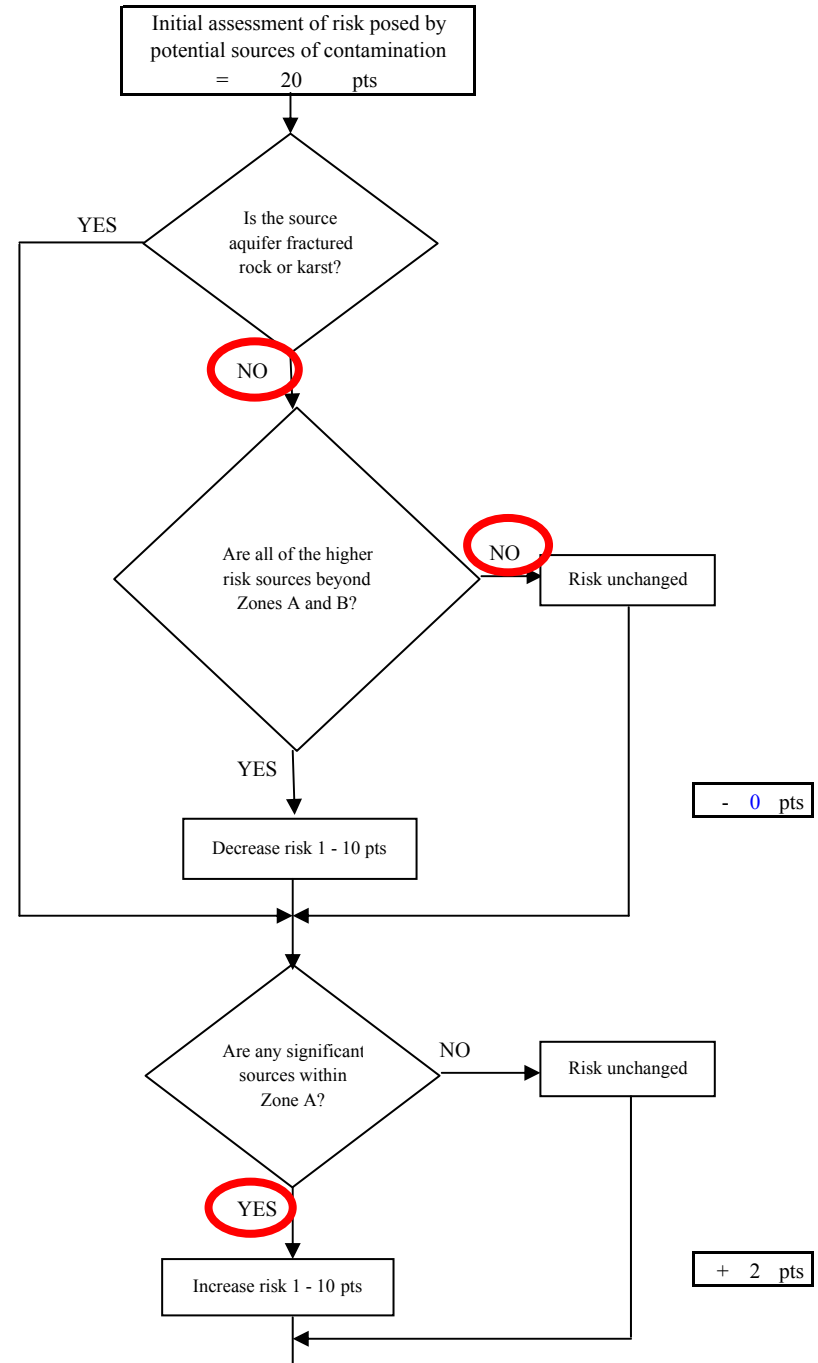
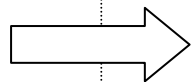
+ 20 pts

Risk Levels for Contaminant Sources identified in Zones A, B and C			
	Zone A	Zones B&C	Total
Very Highs(s)	0	0	0
High(s)	0	0	0
Medium(s)	0	1	1
Low(s)	3	2	5

	LOW 10 pts	MEDIUM 20 pts	HIGH 30 pts	VERY HIGH 40 pts
LOW	≥ 10 sources + 10 pts	≥ 10 sources + 5 pts	≥ 20 sources + 5 pts	----
MEDIUM	----	≥ 2 sources + 5 pts	≥ 5 sources + 5 pts	≥ 10 sources + 5 pts
HIGH	----	----	≥ 1 source + 10 pts	≥ 2 sources + 10 pts
VERY HIGH	----	----	----	≥ 1 source + 10 pts

Matrix Score 20

Note: Septic systems, sewerlines, and roads are each assigned a risk ranking for each individual contaminant source in the CSI. The VA, however, counts these contaminant sources as a group and assigns a calculated number of either "lows" or "mediums" based on the density.



- 0 pts

+ 2 pts

Chart 11. Contaminant risks for Metro Apartments - Synthetic Organic Chemicals

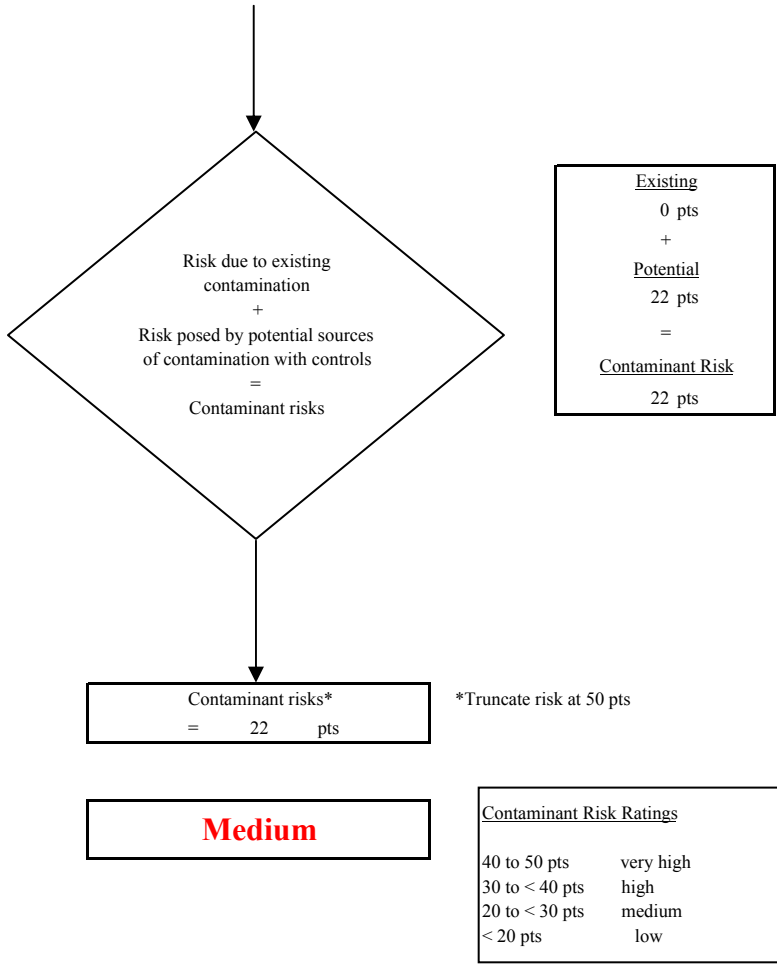
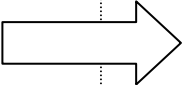
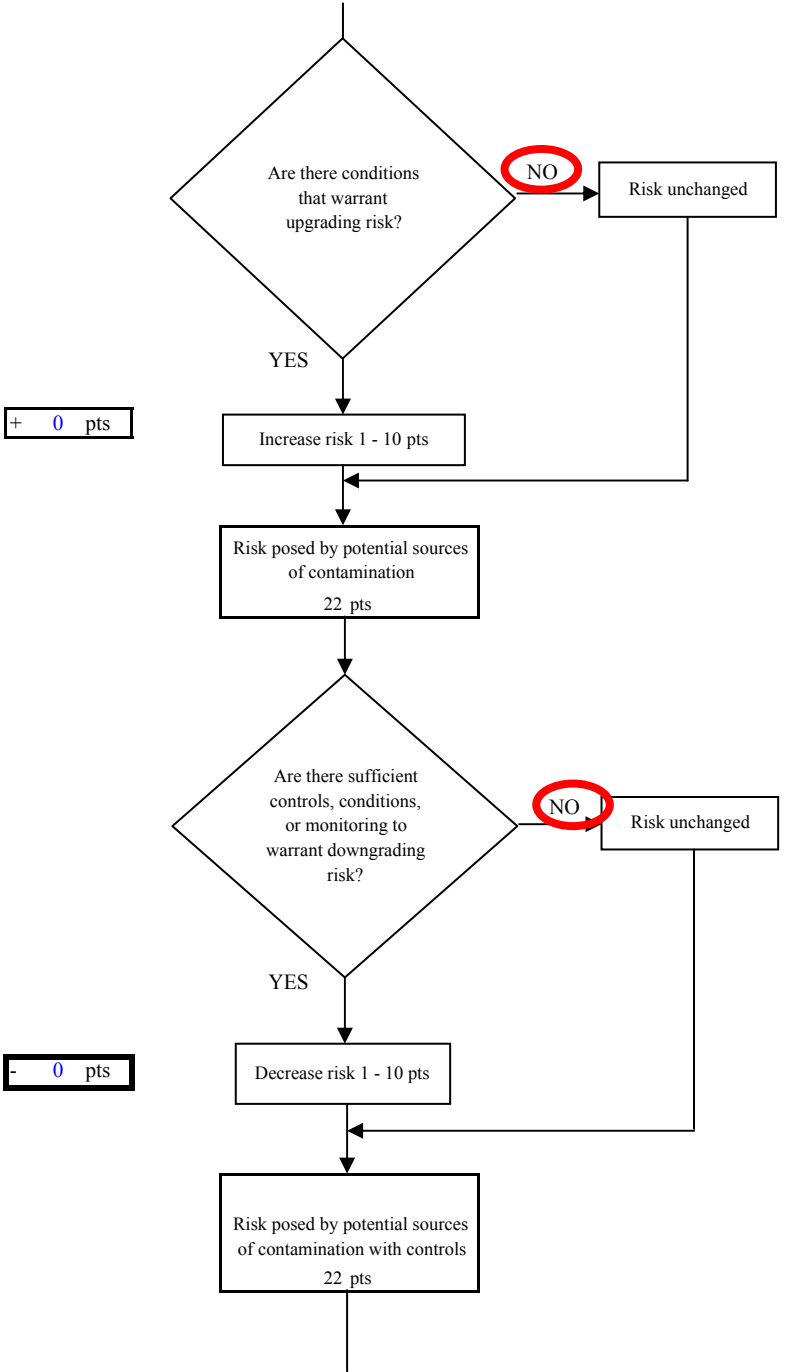


Chart 12. Vulnerability analysis for Metro Apartments - Synthetic Organic Chemicals

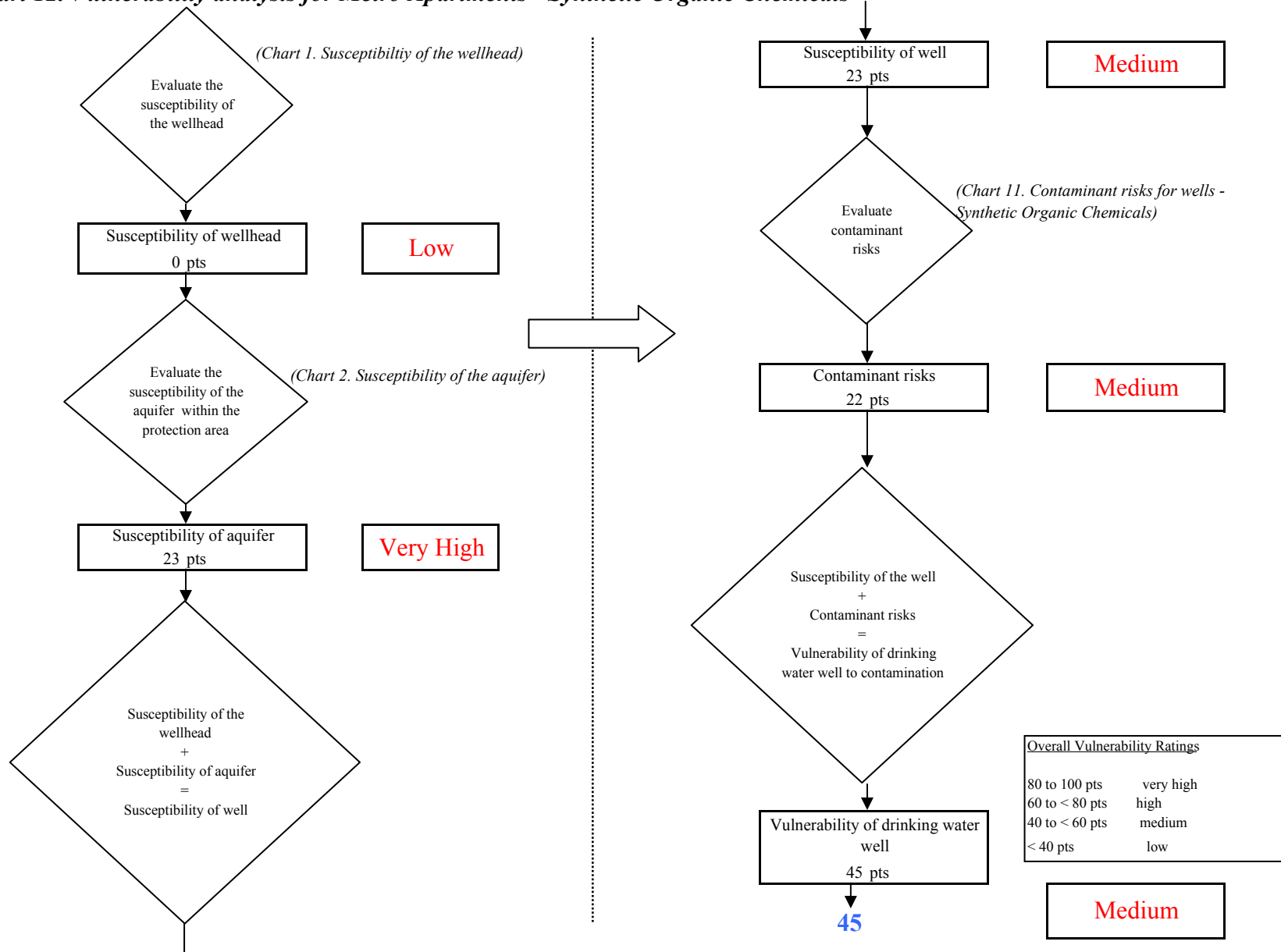


Chart 13. Contaminant risks for Metro Apartments - Other Organic Chemicals

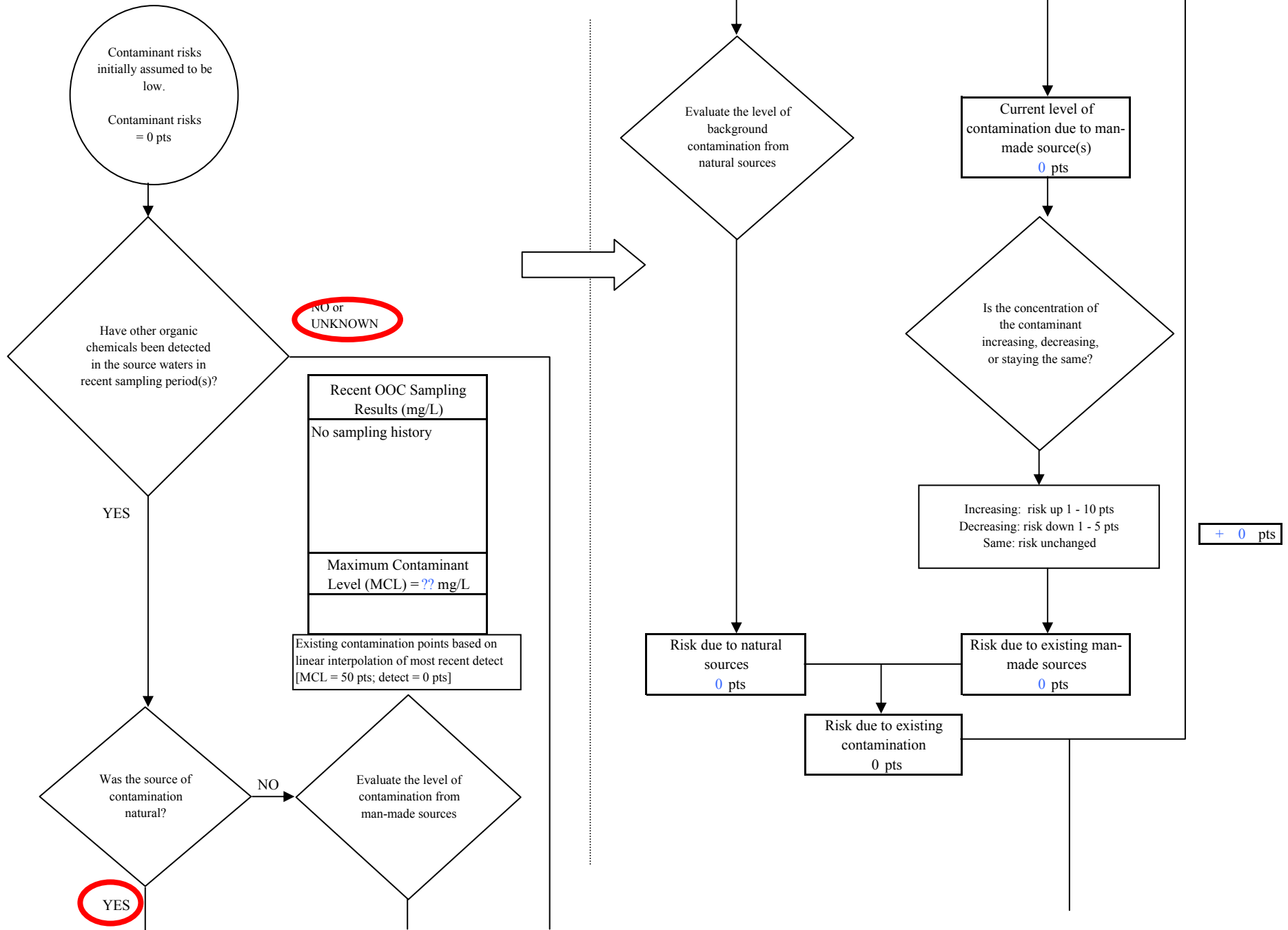
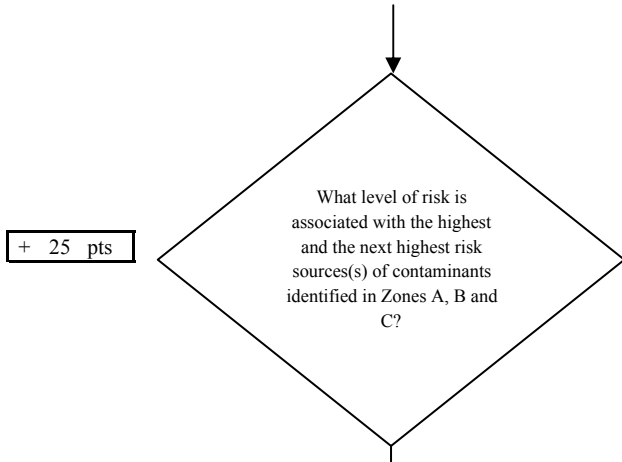


Chart 13. Contaminant risks for Metro Apartments - Other Organic Chemicals



Risk Levels for Contaminant Sources identified in Zones A, B and C			
	Zone A	Zones B&C	Total
Very High(s)	0	0	0
High(s)	0	0	0
Medium(s)	1	5	6
Low(s)	4	5	9

	LOW 10 pts	MEDIUM 20 pts	HIGH 30 pts	VERY HIGH 40 pts
LOW	≥ 10 sources + 10 pts	≥ 10 sources + 5 pts	≥ 20 sources + 5 pts	----
MEDIUM	----	≥ 2 sources + 5 pts	≥ 5 sources + 5 pts	≥ 10 sources + 5 pts
HIGH	----	----	≥ 1 source + 10 pts	≥ 2 sources + 10 pts
VERY HIGH	----	----	----	≥ 1 source + 10 pts

Matrix Score 25

Note: Septic systems, sewerlines, and roads are each assigned a risk ranking for each individual contaminant source in the CSI. The VA, however, counts these contaminant sources as a group and assigns a calculated number of either "lows" or "mediums" based on the density.

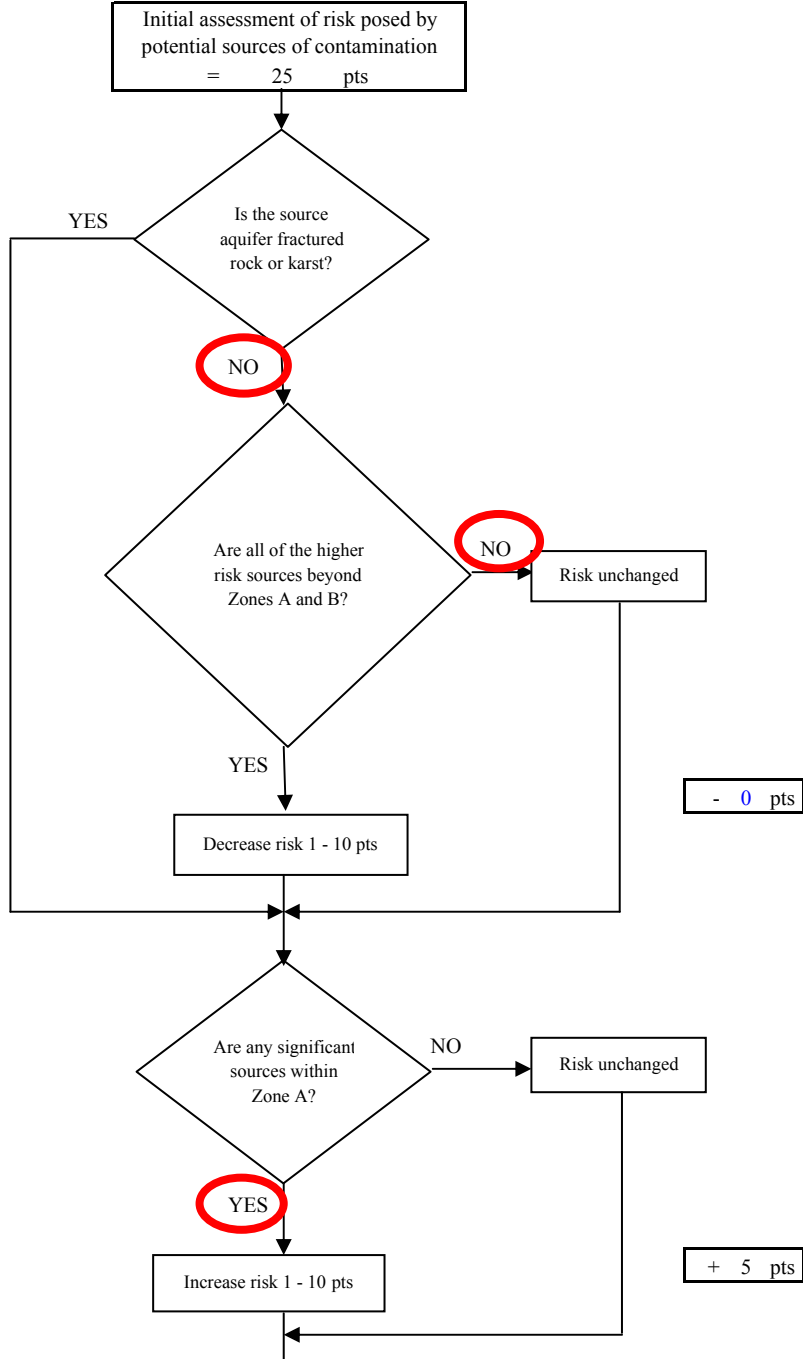
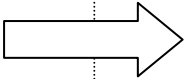


Chart 13. Contaminant risks for Metro Apartments - Other Organic Chemicals

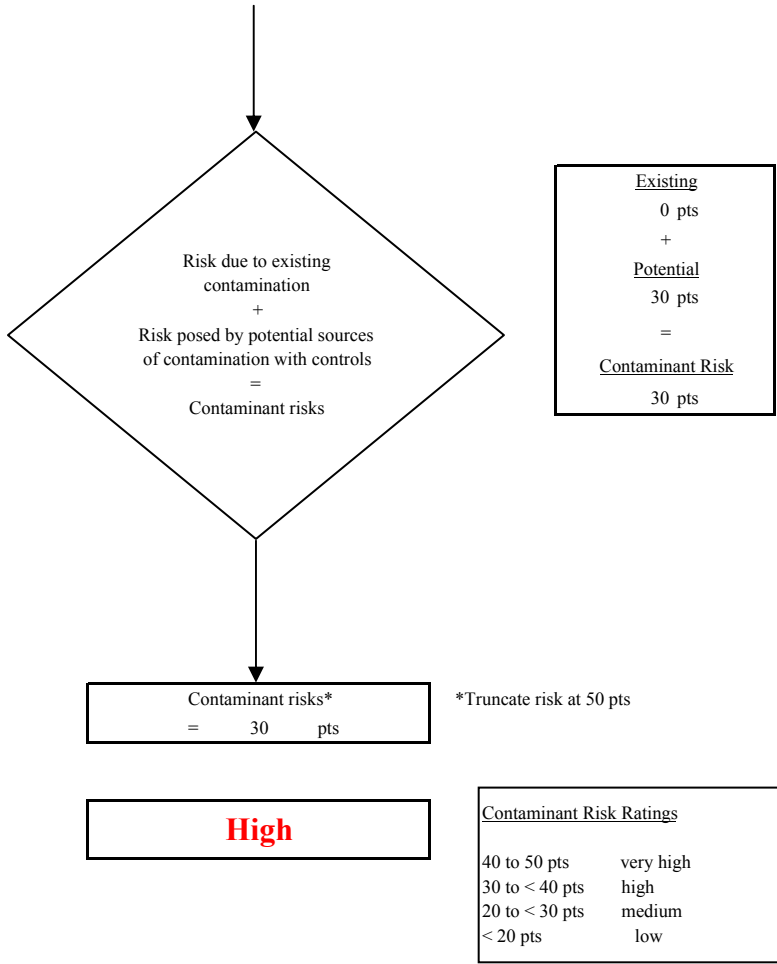
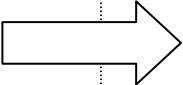
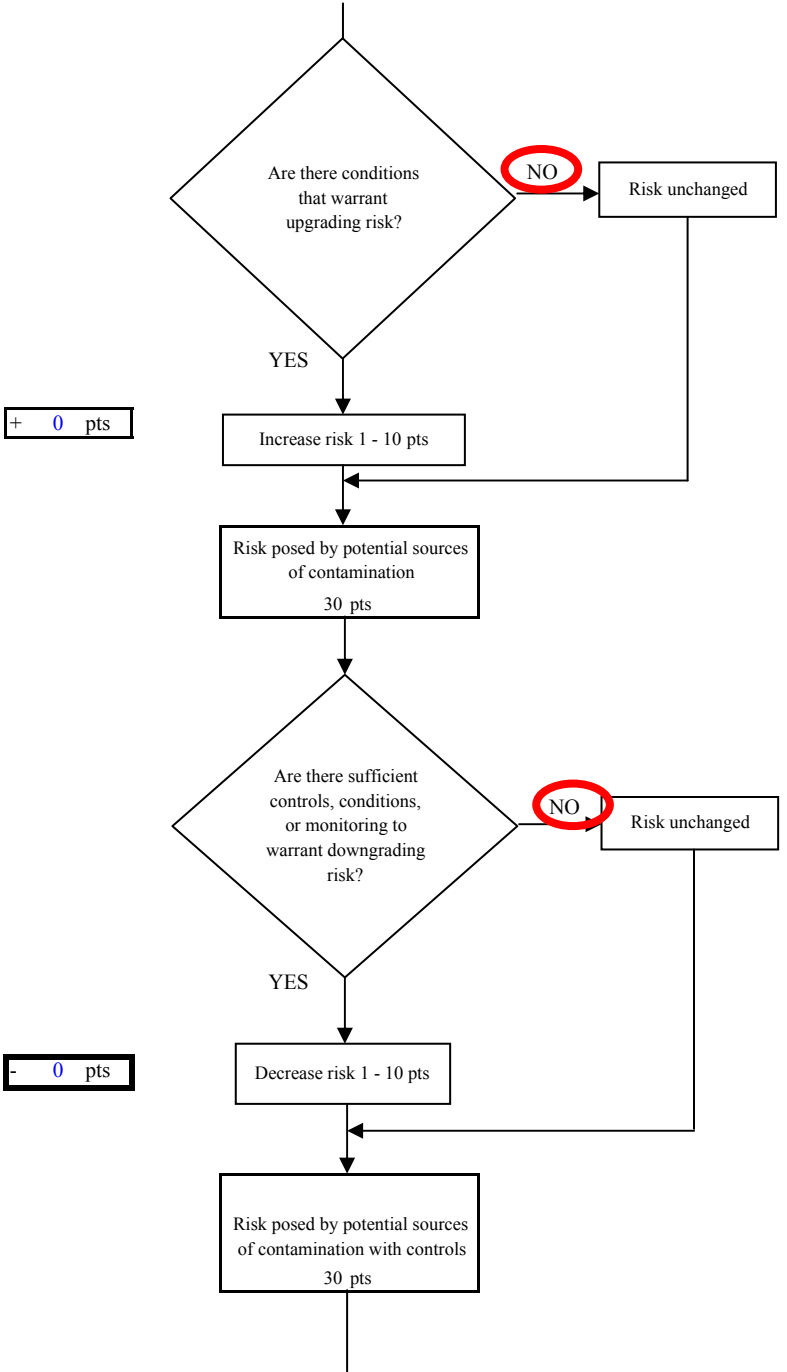


Chart 14. Vulnerability analysis for Metro Apartments - Other Organic Chemicals

