



Source Water Assessment

A Hydrogeologic Susceptibility and
Vulnerability Assessment for
Lakeview Apartments Water System
Drinking Water System,
Bethel, Alaska

PWSID # 271172.001

April 2004

DRINKING WATER PROTECTION PROGRAM REPORT 1125
Alaska Department of Environmental Conservation

Source Water Assessment for
Lakeview Apartments Water System
Drinking Water System
Bethel, Alaska

PWSID # 271172.001

DRINKING WATER PROTECTION PROGRAM REPORT 1125

The Drinking Water Protection Program (DWPP) is producing Source Water Assessments in compliance with the Safe Drinking Water Act Amendments of 1996. Each assessment includes a delineation of the source water area, an inventory of potential and existing contaminant sources that may impact the water, a risk ranking for each of these contaminants, and an evaluation of the potential vulnerability of these drinking water sources.

These assessments are intended to provide public water systems owners/operators, communities, and local governments with the best available information that may be used to protect the quality of their drinking water. The assessments combine information obtained from various sources, including the U.S. Environmental Protection Agency, Alaska Department of Environmental Conservation (ADEC), public water system owners/operators, and other public information sources. The results of this assessment are subject to change if additional data becomes available. It is anticipated this assessment will be updated every five years to reflect any changes in the vulnerability and/or susceptibility of public drinking water source. If you have any additional information that may affect the results of this assessment, please contact the Program Coordinator of DWPP, (907) 269-7521.

CONTENTS

EXECUTIVE SUMMARY	1	INVENTORY OF POTENTIAL AND EXISTING	
PUBLIC DRINKING WATER SYSTEM	1	CONTAMINANT SOURCES	2
DRINKING WATER PROTECTION AREA	2	RANKING OF CONTAMINANT RISKS	2
		VULNERABILITY OF DRINKING WATER	
		SYSTEM	3

TABLES

Table 1. Definition of Zones	2
Table 2. Susceptibility	3
Table 3. Contaminant Risks	4
Table 4. Overall Vulnerability	4

APPENDICES

APPENDIX	A. Lakeview Apartments Water System Drinking Water Protection Area (Map A)
	B. Contaminant Source Inventory for Lakeview Apartments Water System (Table 1)
	Contaminant Source Inventory and Risk Ranking for Lakeview Apartments Water System – Bacteria and Viruses (Table 2)
	Contaminant Source Inventory and Risk Ranking for Lakeview Apartments Water System – Nitrates/Nitrites (Table 3)
	Contaminant Source Inventory and Risk Ranking for Lakeview Apartments Water System – Volatile Organic Chemicals (Table 4)
	Contaminant Source Inventory and Risk Ranking for Lakeview Apartments Water System – Heavy Metals, Cyanide and Other Inorganic Chemicals (Table 5)
	Contaminant Source Inventory and Risk Ranking for Lakeview Apartments Water System – Synthetic Organic Chemicals (Table 6)
	Contaminant Source Inventory and Risk Ranking for Lakeview Apartments Water System – Other Organic Chemicals (Table 7)
	C. Lakeview Apartments Water System Drinking Water Protection Area and Potential and Existing Contaminant Sources (Map C)
	D. Vulnerability Analysis for Contaminant Source Inventory and Risk Ranking for Lakeview Apartments Water System Public Drinking Water Source (Charts 1 – 14)

Source Water Assessment for Lakeview Apartments Water System Source of Public Drinking Water, Bethel, Alaska

Drinking Water Protection Program Alaska Department of Environmental Conservation

EXECUTIVE SUMMARY

The Lakeview Apartments Water System has one Public Water System (PWS) well. The well (PWS No. 271172.001) has been used as a drinking water source since it was drilled in 1982.

The well is a Class A (community and non-transient/non-community) water system located at 515 Mission Drive in Bethel, Alaska. Available records indicate that there is water storage with a capacity of 3,080-gallons, and that the untreated drinking water is derived directly from the wellhead. This system operates year round and serves approximately 25 residents through three service connections. The wellhead received a susceptibility rating of **Low** and the aquifer received a susceptibility rating of **Low**. Combining these two ratings produce a **Low** rating for the natural susceptibility of the well.

Identified potential and current sources of contaminants for the public drinking water source include: domestic wastewater collections systems, aboveground fuel tanks, roads, Laundromats, motor/motor vehicle repair shops, injections wells, ADEC recognized contaminated sites and leaking underground storage tank (LUST) sites, water supply wells, glycol disposal or storage, electric power generation, medical/veterinary facilities, underground fuel tanks, and abandoned wells. These identified potential and existing sources of contamination are considered as sources of bacteria and viruses, nitrates and/or nitrites, volatile organic chemicals, heavy metals, cyanide and other inorganic chemicals, synthetic organic chemicals, and other organic chemical contaminant categories.

Overall, the water well received a vulnerability rating of **Low** for bacteria and viruses, nitrates and nitrites, and synthetic organic chemicals, and a vulnerability rating of **Medium** for volatile organic chemicals, heavy metals, cyanide and other inorganic chemicals, and other organic chemicals.

PUBLIC DRINKING WATER SYSTEM

The Lakeview Apartments Water System well is a Class A (community/non-transient/non-community) public water system. The system is located at 515 Mission Drive in Bethel, Alaska (Sec. 8, T8N, R71W, Seward Meridian; see Map A of Appendix A). Bethel serves as the regional center for 56 villages in the Yukon-Kuskokwim Delta. Food, fuel, transportation, medical care, and other services for the region are provided by Bethel. Bethel is located at the mouth of the Kuskokwim River, 40-miles inland from the Bering Sea, and approximately 400-air miles west of Anchorage. The community has a population of 5,736 (ADCED, 2003). Average annual precipitation for Bethel is 16 inches, including approximately 50 inches of snowfall. Temperatures range from 42 to 62°F in summer and -2 to 19°F in winter.

The community of Bethel obtains a portion of their water supply from city wells. Some households are served by the central piped water and sewage collection system; however, approximately 75% of households have water delivered and sewage hauled by truck. Several facilities have individual wells and septic tanks (ADCED, 2003). Bethel receives electrical power from the Bethel Utilities Corporation. Power generating facilities are fueled by diesel. Refuse is collected by the City of Bethel and transported to the City operated landfill (ADCED, 2003).

According to information supplied by ADEC for the Lakeview Apartments Water System PWS, the depth of the primary water well is 408 feet below the ground surface. Well construction details indicate that the well is screened in a confined aquifer. The well is not located within a floodplain.

Information acquired from a September 2002 sanitary survey for the public water system indicated that the land surface was sloped away from the well. Generally, land surfaces that slope away from the wellhead promote surface water drainage, which reduces the potential of contaminant migration down the well casing annulus. The sanitary survey

indicates that the well is not grouted according to ADEC regulations. Proper grouting provides added protection against contaminants traveling along the well casing annulus and into source waters.

The Bethel area is near the southern border of the continuous permafrost zone and the City, and most of the area west of the Kuskokwim River, appear to be underlain with permafrost. The permafrost generally extends to a depth of at least 300 feet bgs, with depths of over 600 feet bgs recorded in some areas. The geology in the area consists primarily of unconsolidated floodplain alluvium, silt deposits, and reworked silt. The Bethel area consists of poorly drained wetlands that have permanently ponded water in local depressions. Sloughs, small lakes, ponds, and marshes in meander scars surround Bethel (Dames & Moore, 1996).

DRINKING WATER PROTECTION AREA

In order to evaluate whether a drinking water source is at risk, we must first evaluate what are the most likely pathways for surface contamination to reach the groundwater. These areas are determined by looking at the characteristics of the soil, groundwater, aquifer, and well.

The most probable area for contamination to reach the drinking water well is the area that contributes water to the well, the groundwater recharge area. This area is designated as the drinking water protection area (DWPA). Because releases of contaminants within the protection area are most likely to impact the drinking water well, this area will serve as the focus for voluntary protection efforts. An analytical calculation was used to determine the size and shape of the DWPA for the Lakeview Apartments Water System PWS. The input parameters describing the attributes of the aquifer in this calculation were adopted from Groundwater (Freeze and Cherry, 1979). Available geology and groundwater contours were also considered to take into account any uncertainties in groundwater flow and aquifer characteristics to arrive at a meaningful protection area.

The protection areas established for wells by the ADEC are usually separated into four zones, limited by the watershed. These zones correspond to differences in the time-of-travel (TOT) of the water moving through the aquifer to the well (Please refer to the Guidance Manual for Class A Public Water Systems for additional information). The time of travel for contaminants within the water varies and is dependent on the physical and chemical

characteristics of each contaminant. The following is a summary of the four protection area zones for wells and the calculated time -of-travel for each:

Table 1. Definition of Zones

Zone	Definition
A	¼ the distance for the 2-yr. time -of-travel
B	Less than the 2 year time-of-travel
C	Less Than the 5 year time -of-travel
D	Less than the 10 year time -of-travel

The DWPA for the Lakeview Apartments Water System PWS was determined using an analytical calculation and includes Zones A, B, C, and D (See Map A of Appendix A).

INVENTORY OF POTENTIAL AND EXISTING CONTAMINANT SOURCES

The Drinking Water Protection Program has completed an inventory of potential and existing sources of contamination within the Lakeview Apartments Water System DWPA. This inventory was completed through a search of agency records and other publicly available information. Potential sources of contamination to the drinking water aquifer include a wide range of categories and types. Potential drinking water contaminants are found within agricultural, residential, commercial, and industrial areas, but can also occur within areas that have little or no development.

For the basis of all Class A public water system assessments, six categories of drinking water contaminants were inventoried. They include:

- Bacteria and viruses,
- Nitrates and/or nitrites,
- Volatile organic chemicals,
- Heavy metals, cyanide and other inorganic chemicals,
- Synthetic organic chemicals,
- Other organic chemicals.

The sources are displayed on Map C of Appendix C and summarized in Table 1 of Appendix B.

RANKING OF CONTAMINANT RISKS

Once the potential and existing sources of contamination have been identified, they are assigned a ranking according to what type and level of risk they represent. Ranking of contaminant risks for a “potential” or “existing” source of contamination is a function of toxicity and volumes of specific

contaminants associated with that source. Rankings include:

- Low,
- Medium,
- High, and
- Very High.

The time-of-travel for contaminants within the water varies and is dependent on the physical and chemical characteristics of each contaminant. Bacteria and Viruses are only inventoried in Zones A and B because of their short life span. Only “Very High” and “High” rankings are inventoried within the outer Zone D due to the probability of contaminant dilution by the time the contaminants get to the well. Tables 2 through 4 in Appendix B contain the ranking of potential and existing sources of contamination with respect to bacteria and viruses, nitrates and/or nitrites, volatile organic chemicals, heavy metals, cyanide and other inorganic chemicals, synthetic organic chemicals, and other organic chemicals.

VULNERABILITY OF THE DRINKING WATER SYSTEM

Vulnerability of a drinking water source to contamination is a combination of two factors:

- Natural susceptibility, and
- Contaminant risks.

Appendix D contains fourteen charts, which together form the ‘Vulnerability Analysis’ for a source water assessment for a public drinking water source. Chart 1 analyzes the ‘Susceptibility of the Wellhead’ to contamination by looking at the construction of the well and its surrounding area. Chart 2 analyzes the ‘Susceptibility of the Aquifer’ to contamination by looking at the naturally occurring attributes of the water source and influences on the groundwater system that might lead to contamination. Chart 3 analyzes ‘Contaminant Risks’ for the drinking water source with respect to bacteria and viruses. The ‘Contaminant Risks’ portion of the analysis considers potential sources of contaminants as well as a review of contamination that has or may have occurred, but has not arrived or been detected at the well. Chart 4 contains the ‘Vulnerability Analysis for Bacteria and Viruses’. Charts 5 through 14 contain the Contaminant Risks and Vulnerability Analyses for nitrates and nitrites, volatile organic chemicals, heavy metals, cyanide and other inorganic chemicals, synthetic organic chemicals, and other organic chemicals, respectively.

A score for the Natural Susceptibility is reached by considering the properties of the well and the aquifer.

$$\begin{aligned}
 &\text{Susceptibility of the Wellhead (0 – 25 Points)} \\
 &\quad \text{(Chart 1 of Appendix D)} \\
 &\qquad\qquad\qquad + \\
 &\text{Susceptibility of the Aquifer (0 – 25 Points)} \\
 &\quad \text{(Chart 2 of Appendix D)} \\
 &\qquad\qquad\qquad = \\
 &\text{Natural Susceptibility (Susceptibility of the Well)} \\
 &\quad \text{(0 – 50 Points)}
 \end{aligned}$$

A ranking is assigned for the Natural Susceptibility according to the point score:

Natural Susceptibility Ratings	
40 to 50 pts	Very High
30 to < 40 pts	High
20 to < 30 pts	Medium
< 20 pts	Low

The Lakeview Apartments Water System’s water well is in a confined aquifer. Confined aquifers are less susceptible to potential groundwater quality impacts posed by the migration of surface water contaminants downward from the surface. Table 2 shows the susceptibility scores and ratings for this PWS.

Table 2. Susceptibility

	Score	Rating
Susceptibility of the Wellhead	5	Low
Susceptibility of the Aquifer	3	Low
Natural Susceptibility	8	Low

Contaminant risks to a drinking water source depend on the type, number or density, and distribution of contaminant sources. This score has been derived from an examination of existing and historical contamination that has been detected at the drinking water source through routine sampling. It also evaluates potential sources of contamination. Flow charts are used to assign a point score, and ratings are assigned in the same way as for the natural susceptibility:

Contaminant Risk Ratings	
40 to 50 pts	Very High
30 to < 40 pts	High
20 to < 30 pts	Medium
< 20 pts	Low

Table 3 summarizes the Contaminant Risks for each category of drinking water contaminants.

Table 3. Contaminant Risks

Category	Score	Rating
Bacteria and Viruses	25	Medium
Nitrates and/or Nitrites	27	Medium
Volatile Organic Chemicals	44	Very High
Heavy Metals, Cyanide and		
Other Inorganic Chemicals	44	Very High
Synthetic Organic Chemicals	13	Low
Other Organic Chemicals	33	High

Finally, an overall vulnerability score is assigned for each water system by combining each of the contaminant risk scores with the natural susceptibility score:

$$\begin{aligned}
 &\text{Natural Susceptibility (0 – 50 points)} \\
 &\quad + \\
 &\quad \text{Contaminant Risks (0 – 50 points)} \\
 &\quad = \\
 &\quad \text{Vulnerability of the} \\
 &\quad \text{Drinking Water Source to Contamination (0 – 100)}.
 \end{aligned}$$

Again, rankings are assigned according to a point score:

Overall Vulnerability Ratings	
80 to 100 pts	Very High
60 to < 80 pts	High
40 to < 60 pts	Medium
< 40 pts	Low

Table 4 contains the overall vulnerability scores (0 – 100) and ratings for each of the six categories of drinking water contaminants. Note: scores are rounded off to the nearest five.

Table 4. Overall Vulnerability

Category	Score	Rating
Bacteria and Viruses	35	Low
Nitrates and Nitrites	35	Low
Volatile Organic Chemicals	50	Medium
Heavy Metals, Cyanide and		
Other Inorganic Chemicals	50	Medium
Synthetic Organic Chemicals	20	Low
Other Organic Chemicals	40	Medium

Bacteria and Viruses

The contaminant risk for bacteria and viruses is **Medium**. The risk is primarily attributed to the presence of domestic wastewater collections systems, medical/veterinary facilities, and abandoned wells in Zones A, C, and D (see Table 2 – Appendix B).

No positive bacteria counts have been reported in recent (within five years) sampling events (See Chart 3 – Contaminant Risks for Bacteria and Viruses in Appendix D). Only a small amount of bacteria and viruses are required to endanger public health.

After combining the contaminant risk for bacteria and viruses with the natural susceptibility of the well, the overall vulnerability of the well to contamination is **Low**.

Nitrates and Nitrites

The contaminant risk for nitrates and nitrites is **Medium**. The risk to this source of public drinking water is primarily attributed to the presence of abandoned wells in Zone D (see Table 3 – Appendix B).

Nitrates are very mobile, moving at approximately the same rate as water. The sampling history for this well indicates that low levels of nitrates have been detected in recent sampling events. However, the reported concentrations of nitrates do not exceed the maximum contaminant level (MCL) of 10 mg/L. Nitrate concentrations in uncontaminated groundwater are typically less than 2 mg/L; therefore, nitrate concentrations above 2 mg/L may be indicative of man-made sources (See Chart 5 - Contaminant Risks for Nitrates and/or Nitrites in Appendix D).

Nitrate levels are often derived from the decomposition of organic matter in soils. Although the nitrate source is unknown, such occurrences may be attributed to septic systems or other sources. After combining the contaminant risk for nitrates and nitrites with the natural susceptibility of the well, the

overall vulnerability of the well to nitrate and nitrite contamination is **Low**.

Volatile Organic Chemicals

The contaminant risk for volatile organic chemicals is **Very High**. The risk is primarily attributed to the presence of ADEC recognized contaminated sites and LUST sites, abandoned wells, and underground fuel tanks in Zones C and D. Numerous other potential contaminant sources are also found within the protection area (see Table 4 – Appendix B).

Detectable concentrations of dichloro methane were reported in sampling events for this public water system. However, the detectable concentrations of dichloromethane reported in 2001 and 2002 were well below the MCL of 0.08 mg/L. Dichloromethane is a possible laboratory contaminant and is not from the source waters. Since the reported concentrations of dichloromethane in recent sampling events did not exceed the applicable MCL, risk points were not retained.

Aside from being possible laboratory contaminants, possible sources of volatile organic chemicals include facilities with automobiles, residential areas, fuel tanks, roads, and airports. See Table 4 in Appendix B for a complete listing.

After combining the contaminant risk for volatile organic chemicals with the natural susceptibility of the well, the overall vulnerability of the well to contamination is **Medium**.

Heavy Metals, Cyanide and Other Inorganic Chemicals

The contaminant risk for heavy metals, cyanide and other inorganic chemicals is **Very High**. The risk is primarily attributed to the presence of abandoned wells in Zone D. Numerous other potential contaminant sources are also found within the protection area (see Table 5 – Appendix B).

Based on review of recent sampling records for this public water system, moderate levels of arsenic have been detected in recent sampling history. However, the analyte did not exceed the MCL of 0.05 mg/L (see Chart 9 – Contaminant Risks for Heavy Metals, Cyanide, and Other Inorganic Chemicals in Appendix D).

After combining the contaminant risk for heavy metals, cyanide and other inorganic chemicals with the natural susceptibility of the well, the overall vulnerability of the well to contamination is **Medium**.

Synthetic Organic Chemicals

The contaminant risk for synthetic organic chemicals is **Low**. The risk is primarily attributed to the presence of injection wells and abandoned wells in Zone D (see Table 6 – Appendix B).

No recent sampling data was available in ADEC records for the Lakeview Apartments Water System (See Chart 11 – Contaminant Risks for Synthetic Organic Chemicals in Appendix D).

After combining the contaminant risk for synthetic organic chemicals with the natural susceptibility of the well, the overall vulnerability of the well to contamination is **Low**.

Other Organic Chemicals

The contaminant risk for other organic chemicals is **High**. The risk is primarily attributed to the presence of electric power generation and abandoned wells in Zones C and D. Numerous other potential contaminant sources are also found within the protection area (see Table 7 – Appendix B).

No recent sampling data was available in ADEC records for the Lakeview Apartments Water System (See Chart 13 – Contaminant Risks for Other Organic Chemicals in Appendix D).

After combining the contaminant risk for other organic chemicals with the natural susceptibility of the well, the overall vulnerability of the well to contamination is **Medium**.

Using the Source Water Assessment

This assessment of contaminant risks can be used as a foundation for local voluntary protection efforts as well as a basis for the continuous efforts on the part of the Lakeview Apartments and the community of Bethel to protect public health. It is anticipated that Source Water Assessments will be updated every five years to reflect any changes in the vulnerability and/or susceptibility of the drinking water source.

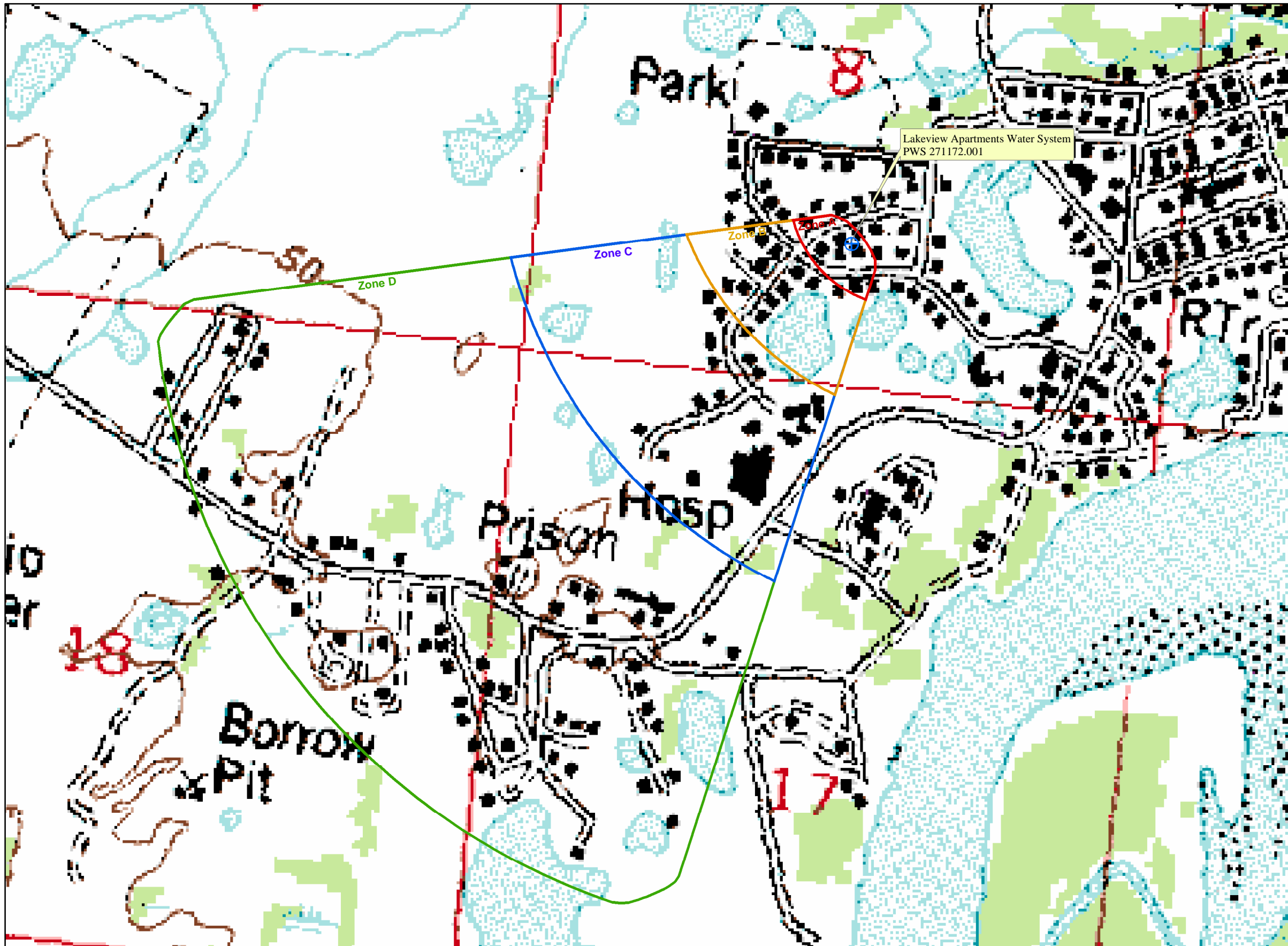
REFERENCES

- Alaska Department of Community and Economic Development (ADCED), 2003 [WWW document]. URL: http://www.dced.state.ak.us/cbd/commdb/CF_COMDB.htm
- Alaska Department of Environmental Conservation, Contaminated Sites Database, 2003 [WWW database], URL http://www.state.ak.us/dec/dspar/csites/cs_search.htm
- Alaska Department of Environmental Conservation, Leaking Underground Storage Tank Database, 2003 [WWW database], URL http://www.dec.state.ak.us/spar/stp/ust/search/fac_search.asp
- Dames & Moore, 1996. Final Water and Sewer Facilities Master Plan Update Report, City of Bethel.
- Freeze, R. A., and Cherry, J.A. 1979, Groundwater, Prentice-Hall, Englewood Cliffs, New Jersey
- United States Environmental Protection Agency (EPA), 2002 [WWW document]. URL <http://www.epa.gov/safewater/mcl.html>.

APPENDIX A

Drinking Water Protection Area Location Map (Map A)

Public Water Well System for PWS #271172.001 Lakeview Apartments Water System



LEGEND

- Public Water System Well

Hydrography/Physical

- Parcels
- Stream
- Lake or Pond
- Contours

Transportation

- Primary Route (Class 1)
- Secondary Route (Class 2)
- Road (Class 3)
- Road (Class 4)
- Road (Class 5, Four-wheel drive)

Groundwater Protection Zones

- Zone A Protection Area- Several Months Travel Time
- Zone B Protection Area- 2 Years Travel Time
- Zone C Protection Area- 5 Years Travel Time
- Zone D Protection Area- 10 Years Travel Time

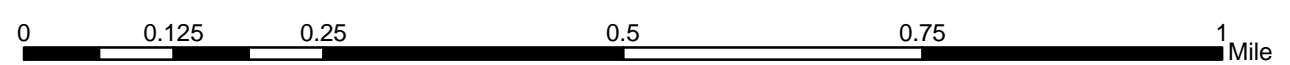
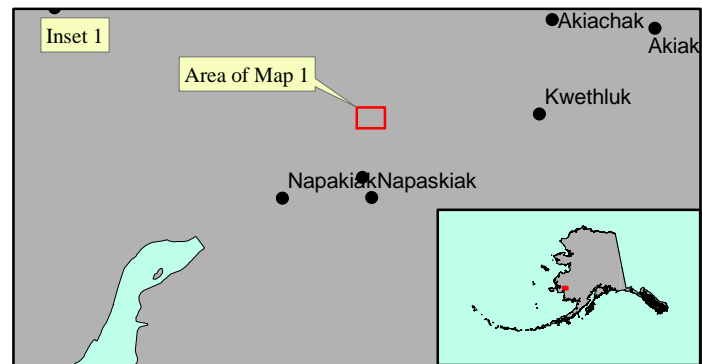
Data Sources:
Contaminant Sources, Public Water System Wells, Contours
Alaska Department of Environmental Conservation (ADEC)

Critical Facilities, Federal Emergency Management Agency (FEMA)

All other data:
United States Geological Survey (USGS)

Drinking Water Protection Areas based on "Alaska Drinking Water Protection Program - Guidance Manual for Class A Public Water Systems" published by ADEC

URS Corporation does not guarantee the accuracy or validity of the data provided.



APPENDIX B

Contaminant Source Inventory and Risk Ranking (Tables 1-7)

Table 1

**Contaminant Source Inventory for
Lakeview Apt. Water System**

PWSID 271172.001

Contaminant Source Type	Contaminant Source ID	CS ID tag	Zone	Map Number	Comments
Domestic wastewater collection systems (sewer lines or lift stations)	D01	D01-01	A	C	
Tanks, heating oil, nonresidential (aboveground)	T14	T14-01	A	C	Lakeview Apts.
Highways and roads, dirt/gravel	X24	X24-01	A	C	Assume 1-20 roads in Zone A
Highways and roads, dirt/gravel	X24	X24-02	B	C	Assume 1-20 roads in Zone B
Laundromats without dry cleaning	C22	C22-01	C	C	YKHC Hospital
Motor /motor vehicle repair shops	C31	C31-01	C	C	YKHC Hospital
Domestic wastewater collection systems (sewer lines or lift stations)	D01	D01-02	C	C	
Injection wells (Class V) Cooling Water Return Flow Wells	D33	D33-01	C	C	Bethel Utilities Corp.
Tanks, diesel (above ground)	T06	T06-01	C	C	YKHC Hospital
Contaminated sites, DEC recognized, non-Superfund, non-RCRA	U04	U04-01	C	C	YKHC Building 600, RecKey #1996250134901, Status: Inactive, an approximate 150-gallon fuel oil spill occurred near Building 600. Contaminated soils discovered from an unrelated initial spill.
Contaminated sites, DEC recognized, non-Superfund, non-RCRA	U04	U04-02	C	C	YKHC Building 600, RecKey #1996250134901, Status: Inactive, an approximate 150-gallon fuel oil spill occurred near Building 600. Contaminated soils discovered from an unrelated initial spill.
Closed Leaking Underground Fuel Storage Tank (LUST) Sites	U08	U08-01	C	C	YKHC Hospital, RecKey #1992250007651, Event ID 639, Facility ID 2916, site assessment identified GRO and DRO in the soil around USTs.
Water supply wells	W09	W09-01	C	C	3 water supply wells in Zone C
Glycol (disposal or storage)	X07	X07-01	C	C	
Highways and roads, dirt/gravel	X24	X24-03	C	C	Assume 1-20 roads in Zone C
Electric power generation (fossil fuels)	X36	X36-01	C	C	YKHC Hospital
Medical/veterinary facilities (doctor or dentist offices, hospitals, nursing homes)	X40	X40-01	C	C	
Injection wells (Class V) Aquifer Recharge Wells	D30	D30-01	D	C	Bethel Utilities Corp.
Injection wells (Class V) Aquifer Recharge Wells	D30	D30-02	D	C	Bethel Utilities Corp.
Tanks, diesel (underground)	T08	T08-01	D	C	Yukon-Kuskokwim Correctional Center

<i>Contaminant Source Type</i>	<i>Contaminant Source ID</i>	<i>CS ID tag</i>	<i>Zone</i>	<i>Map Number</i>	<i>Comments</i>
Tanks, heating oil, nonresidential (aboveground)	T14	T14-02	D	C	Bethel Trailer Court
Contaminated sites, DEC recognized, non-Superfund, non-RCRA	U04	U04-03	D	C	YKHC Hospital, RecKey #1992250107651, Status: Active, site assessment identified GRO and DRO contaminated soil around the USTs.
Contaminated sites, DEC recognized, non-Superfund, non-RCRA	U04	U04-04	D	C	Bethel Utilities Corp. Power Plant, RecKey #1995250106101, Status: Inactive, contamination found during site assessment, structure has dirt floor with contamination remaining, undergoing in-situ remediation.
Abandoned wells	W01	W01-01	D	C	Pacifica House & Diane's Restaurant
Water supply wells	W09	W09-02	D	C	4 water supply wells in Zone D
Highways and roads, dirt/gravel	X24	X24-04	D	C	Assume 1-20 roads in Zone D
Electric power generation (fossil fuels)	X36	X36-02	D	C	Bethel Utilities
Medical/veterinary facilities (doctor or dentist offices, hospitals, nursing homes)	X40	X40-02	D	C	

*Contaminant Source Inventory and Risk Ranking for
Lakeview Apt. Water System
Sources of Bacteria and Viruses*

PWSID 271172.001

Table 2

<i>Contaminant Source Type</i>	<i>Contaminant Source ID</i>	<i>CS ID tag</i>	<i>Zone</i>	<i>Risk Ranking for Analysis</i>	<i>Map Number</i>	<i>Comments</i>
Domestic wastewater collection systems (sewer line or lift stations)	D01	D01-01	A	Medium	C	
Highways and roads, dirt/gravel	X24	X24-01	A	Low	C	Assume 1-20 roads in Zone A
Highways and roads, dirt/gravel	X24	X24-02	B	Low	C	Assume 1-20 roads in Zone B
Laundromats without dry cleaning	C22	C22-01	C	Low	C	YKHC Hospital
Domestic wastewater collection systems (sewer line or lift stations)	D01	D01-02	C	Medium	C	
Injection wells (Class V) Cooling Water Return Flow Wells	D33	D33-01	C	Low	C	Bethel Utilities Corp.
Closed Leaking Underground Fuel Storage Tank (LUST) Sites	U08	U08-01	C	Low	C	YKHC Hospital, RecKey #1992250007651, Event ID 639, Facility ID 29. site assessment identified GRO and DRO in the soil around USTs.
Highways and roads, dirt/gravel	X24	X24-03	C	Low	C	Assume 1-20 roads in Zone C
Medical/veterinary facilities (doctor or dentist offices, hospitals, nursing homes)	X40	X40-01	C	Medium	C	
Abandoned wells	W01	W01-01	D	Medium	C	Pacifica House & Diane's Restaurant
Highways and roads, dirt/gravel	X24	X24-04	D	Low	C	Assume 1-20 roads in Zone D
Medical/veterinary facilities (doctor or dentist offices, hospitals, nursing homes)	X40	X40-02	D	Medium	C	

*Contaminant Source Inventory and Risk Ranking for
Lakeview Apt. Water System
Sources of Nitrates/Nitrites*

PWSID 271172.001

Table 3

<i>Contaminant Source Type</i>	<i>Contaminant Source ID</i>	<i>CS ID tag</i>	<i>Zone</i>	<i>Risk Ranking for Analysis</i>	<i>Map Number</i>	<i>Comments</i>
Domestic wastewater collection systems (sewer line or lift stations)	D01	D01-01	A	Medium	C	
Highways and roads, dirt/gravel	X24	X24-01	A	Low	C	Assume 1-20 roads in Zone A
Highways and roads, dirt/gravel	X24	X24-02	B	Low	C	Assume 1-20 roads in Zone B
Laundromats without dry cleaning	C22	C22-01	C	Low	C	YKHC Hospital
Domestic wastewater collection systems (sewer line or lift stations)	D01	D01-02	C	Medium	C	
Closed Leaking Underground Fuel Storage Tank (LUST) Sites	U08	U08-01	C	Low	C	YKHC Hospital, RecKey #1992250007651, Event ID 639, Facility ID 29 site assessment identified GRO and DRO in the soil around USTs.
Highways and roads, dirt/gravel	X24	X24-03	C	Low	C	Assume 1-20 roads in Zone C
Medical/veterinary facilities (doctor or dentist offices, hospitals, nursing homes)	X40	X40-01	C	Low	C	
Abandoned wells	W01	W01-01	D	High	C	Pacifica House & Diane's Restaurant
Highways and roads, dirt/gravel	X24	X24-04	D	Low	C	Assume 1-20 roads in Zone D
Medical/veterinary facilities (doctor or dentist offices, hospitals, nursing homes)	X40	X40-02	D	Low	C	

*Contaminant Source Inventory and Risk Ranking for
Lakeview Apt. Water System
Sources of Volatile Organic Chemicals*

PWSID 271172.001

Table 4

<i>Contaminant Source Type</i>	<i>Contaminant Source ID</i>	<i>CS ID tag</i>	<i>Zone</i>	<i>Risk Ranking for Analysis</i>	<i>Map Number</i>	<i>Comments</i>
Domestic wastewater collection systems (sewer line or lift stations)	D01	D01-01	A	Low	C	
Tanks, heating oil, nonresidential (aboveground)	T14	T14-01	A	Low	C	Lakeview Apts.
Highways and roads, dirt/gravel	X24	X24-01	A	Low	C	Assume 1-20 roads in Zone A
Highways and roads, dirt/gravel	X24	X24-02	B	Low	C	Assume 1-20 roads in Zone B
Laundromats without dry cleaning	C22	C22-01	C	Low	C	YKHC Hospital
Motor /motor vehicle repair shops	C31	C31-01	C	Medium	C	YKHC Hospital
Domestic wastewater collection systems (sewer line or lift stations)	D01	D01-02	C	Low	C	
Injection wells (Class V) Cooling Water Return Flow Wells	D33	D33-01	C	Low	C	Bethel Utilities Corp.
Tanks, diesel (above ground)	T06	T06-01	C	Medium	C	YKHC Hospital
Contaminated sites, DEC recognized, non-Superfund non-RCRA	U04	U04-01	C	High	C	YKHC Building 600, RecKey #1996250134901, Status: Inactive, an approximate 150-gallon fuel oil spill occurred near Building 600. Contaminated soils discovered from an unrelated initial spill.
Contaminated sites, DEC recognized, non-Superfund non-RCRA	U04	U04-02	C	High	C	YKHC Building 600, RecKey #1996250134901, Status: Inactive, an approximate 150-gallon fuel oil spill occurred near Building 600. Contaminated soils discovered from an unrelated initial spill.
Closed Leaking Underground Fuel Storage Tank (LUST) Sites	U08	U08-01	C	High	C	YKHC Hospital, RecKey #1992250007651, Event ID 639, Facility ID 29- site assessment identified GRO and DRO in the soil around USTs.
Highways and roads, dirt/gravel	X24	X24-03	C	Low	C	Assume 1-20 roads in Zone C
Electric power generation (fossil fuels)	X36	X36-01	C	Medium	C	YKHC Hospital
Medical/veterinary facilities (doctor or dentist offices, hospitals, nursing homes)	X40	X40-01	C	Low	C	
Tanks, diesel (underground)	T08	T08-01	D	High	C	Yukon-Kuskokwim Correctional Center
Tanks, heating oil, nonresidential (aboveground)	T14	T14-02	D	Low	C	Bethel Trailer Court
Contaminated sites, DEC recognized, non-Superfund non-RCRA	U04	U04-03	D	High	C	YKHC Hospital, RecKey #1992250107651, Status: Active, site assessment identified GRO and DRO contaminated soil around the USTs.

Table 4 (continued)

*Contaminant Source Inventory and Risk Ranking for
Lakeview Apt. Water System
Sources of Volatile Organic Chemicals*

PWSID 271172.001

<i>Contaminant Source Type</i>	<i>Contaminant Source ID</i>	<i>CS ID tag</i>	<i>Zone</i>	<i>Risk Ranking for Analysis</i>	<i>Map Number</i>	<i>Comments</i>
Contaminated sites, DEC recognized, non-Superfund non-RCRA	U04	U04-04	D	High	C	Bethel Utilities Corp. Power Plant, RecKey #1995250106101, Status: Inactive contamination found during site assessment, structure has dirt floor with contamination remaining, undergoing in-situ remediation.
Abandoned wells	W01	W01-01	D	High	C	Pacifica House & Diane's Restaurant
Highways and roads, dirt/gravel	X24	X24-04	D	Low	C	Assume 1-20 roads in Zone D
Electric power generation (fossil fuels)	X36	X36-02	D	Medium	C	Bethel Utilities
Medical/veterinary facilities (doctor or dentist offices, hospitals, nursing homes)	X40	X40-02	D	Low	C	

*Contaminant Source Inventory and Risk Ranking for
Lakeview Apt. Water System*

PWSID 271172.001

Table 5

Sources of Heavy Metals, Cyanide and Other Inorganic Chemicals

<i>Contaminant Source Type</i>	<i>Contaminant Source ID</i>	<i>CS ID tag</i>	<i>Zone</i>	<i>Risk Ranking for Analysis</i>	<i>Map Number</i>	<i>Comments</i>
Domestic wastewater collection systems (sewer line or lift stations)	D01	D01-01	A	Low	C	
Tanks, heating oil, nonresidential (aboveground)	T14	T14-01	A	Low	C	Lakeview Apts.
Highways and roads, dirt/gravel	X24	X24-01	A	Low	C	Assume 1-20 roads in Zone A
Highways and roads, dirt/gravel	X24	X24-02	B	Low	C	Assume 1-20 roads in Zone B
Motor /motor vehicle repair shops	C31	C31-01	C	Medium	C	YKHC Hospital
Domestic wastewater collection systems (sewer line or lift stations)	D01	D01-02	C	Low	C	
Injection wells (Class V) Cooling Water Return Flow Wells	D33	D33-01	C	Low	C	Bethel Utilities Corp.
Contaminated sites, DEC recognized, non-Superfund non-RCRA	U04	U04-01	C	Low	C	YKHC Building 600, RecKey #1996250134901, Status: Inactive, an approximate 150-gallon fuel oil spill occurred near Building 600. Contaminated soils discovered from an unrelated initial spill.
Contaminated sites, DEC recognized, non-Superfund non-RCRA	U04	U04-02	C	Low	C	YKHC Building 600, RecKey #1996250134901, Status: Inactive, an approximate 150-gallon fuel oil spill occurred near Building 600. Contaminated soils discovered from an unrelated initial spill.
Closed Leaking Underground Fuel Storage Tank (LUST) Sites	U08	U08-01	C	Low	C	YKHC Hospital, RecKey #1992250007651, Event ID 639, Facility ID 29 site assessment identified GRO and DRO in the soil around USTs.
Glycol (disposal or storage)	X07	X07-01	C	Low	C	
Highways and roads, dirt/gravel	X24	X24-03	C	Low	C	Assume 1-20 roads in Zone C
Electric power generation (fossil fuels)	X36	X36-01	C	Medium	C	YKHC Hospital
Medical/veterinary facilities (doctor or dentist offices, hospitals, nursing homes)	X40	X40-01	C	Low	C	
Tanks, heating oil, nonresidential (aboveground)	T14	T14-02	D	Low	C	Bethel Trailer Court
Contaminated sites, DEC recognized, non-Superfund non-RCRA	U04	U04-03	D	Low	C	YKHC Hospital, RecKey #1992250107651, Status: Active, site assessment identified GRO and DRO contaminated soil around the USTs.
Contaminated sites, DEC recognized, non-Superfund non-RCRA	U04	U04-04	D	Low	C	Bethel Utilities Corp. Power Plant, RecKey #1995250106101, Status: Inactive, contamination found during site assessment, structure has dirt floor with contamination remaining, undergoing in-situ remediation.
Abandoned wells	W01	W01-01	D	Very High	C	Pacifica House & Diane's Restaurant

*Contaminant Source Inventory and Risk Ranking for
Lakeview Apt. Water System*

PWSID 271172.001

Table 5 (continued)

Sources of Heavy Metals, Cyanide and Other Inorganic Chemicals

<i>Contaminant Source Type</i>	<i>Contaminant Source ID</i>	<i>CS ID tag</i>	<i>Zone</i>	<i>Risk Ranking for Analysis</i>	<i>Map Number</i>	<i>Comments</i>
Highways and roads, dirt/gravel	X24	X24-04	D	Low	C	Assume 1-20 roads in Zone D
Electric power generation (fossil fuels)	X36	X36-02	D	Medium	C	Bethel Utilities
Medical/veterinary facilities (doctor or dentist offices, hospitals, nursing homes)	X40	X40-02	D	Low	C	

*Contaminant Source Inventory and Risk Ranking for
Lakeview Apt. Water System
Sources of Synthetic Organic Chemicals*

PWSID 271172.001

Table 6

<i>Contaminant Source Type</i>	<i>Contaminant Source ID</i>	<i>CS ID tag</i>	<i>Zone</i>	<i>Risk Ranking for Analysis</i>	<i>Map Number</i>	<i>Comments</i>
Domestic wastewater collection systems (sewer line or lift stations)	D01	D01-01	A	Low	C	
Domestic wastewater collection systems (sewer line or lift stations)	D01	D01-02	C	Low	C	
Injection wells (Class V) Cooling Water Return Flow Wells	D33	D33-01	C	Low	C	Bethel Utilities Corp.
Contaminated sites, DEC recognized, non-Superfund non-RCRA	U04	U04-01	C	Low	C	YKHC Building 600, RecKey #1996250134901, Status: Inactive, an approximate 150-gallon fuel oil spill occurred near Building 600. Contaminated soils discovered from an unrelated initial spill.
Contaminated sites, DEC recognized, non-Superfund non-RCRA	U04	U04-02	C	Low	C	YKHC Building 600, RecKey #1996250134901, Status: Inactive, an approximate 150-gallon fuel oil spill occurred near Building 600. Contaminated soils discovered from an unrelated initial spill.
Closed Leaking Underground Fuel Storage Tank (LUST) Sites	U08	U08-01	C	Low	C	YKHC Hospital, RecKey #1992250007651, Event ID 639, Facility ID 29 site assessment identified GRO and DRO in the soil around USTs.
Medical/veterinary facilities (doctor or dentist offices, hospitals, nursing homes)	X40	X40-01	C	Low	C	
Injection wells (Class V) Aquifer Recharge Wells	D30	D30-01	D	High	C	Bethel Utilities Corp.
Injection wells (Class V) Aquifer Recharge Wells	D30	D30-02	D	High	C	Bethel Utilities Corp.
Contaminated sites, DEC recognized, non-Superfund non-RCRA	U04	U04-03	D	Low	C	YKHC Hospital, RecKey #1992250107651, Status: Active, site assessment identified GRO and DRO contaminated soil around the USTs.
Contaminated sites, DEC recognized, non-Superfund non-RCRA	U04	U04-04	D	Low	C	Bethel Utilities Corp. Power Plant, RecKey #1995250106101, Status: Inactive, contamination found during site assessment, structure has dirt floor with contamination remaining, undergoing in-situ remediation.
Abandoned wells	W01	W01-01	D	High	C	Pacifica House & Diane's Restaurant
Medical/veterinary facilities (doctor or dentist offices, hospitals, nursing homes)	X40	X40-02	D	Low	C	

*Contaminant Source Inventory and Risk Ranking for
Lakeview Apt. Water System
Sources of Other Organic Chemicals*

PWSID 271172.001

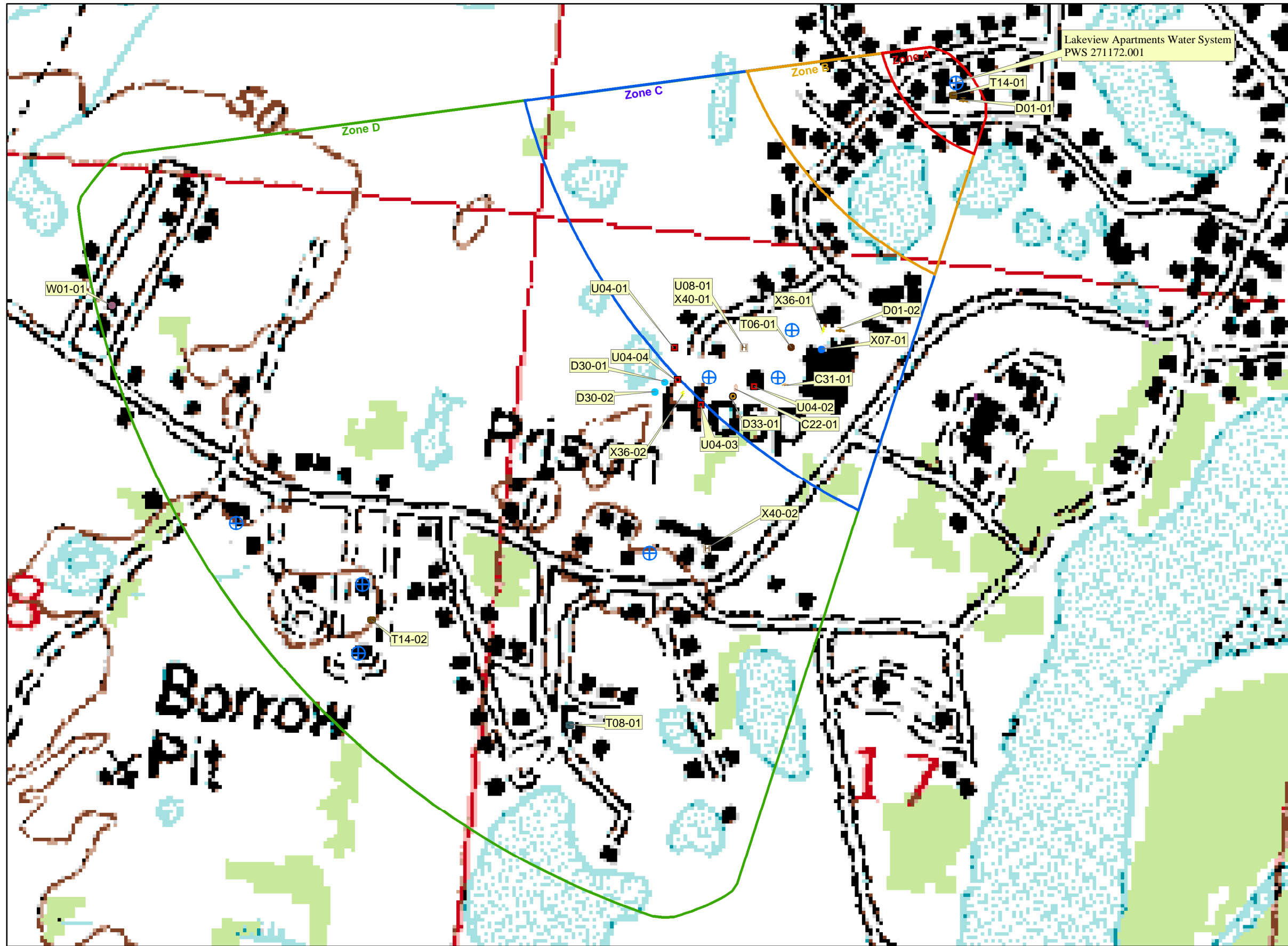
Table 7

<i>Contaminant Source Type</i>	<i>Contaminant Source ID</i>	<i>CS ID tag</i>	<i>Zone</i>	<i>Risk Ranking for Analysis</i>	<i>Map Number</i>	<i>Comments</i>
Domestic wastewater collection systems (sewer line or lift stations)	D01	D01-01	A	Low	C	
Highways and roads, dirt/gravel	X24	X24-01	A	Low	C	Assume 1-20 roads in Zone A
Highways and roads, dirt/gravel	X24	X24-02	B	Low	C	Assume 1-20 roads in Zone B
Motor /motor vehicle repair shops	C31	C31-01	C	Medium	C	YKHC Hospital
Domestic wastewater collection systems (sewer line or lift stations)	D01	D01-02	C	Low	C	
Injection wells (Class V) Cooling Water Return Flow Wells	D33	D33-01	C	Low	C	Bethel Utilities Corp.
Contaminated sites, DEC recognized, non-Superfund non-RCRA	U04	U04-01	C	Low	C	YKHC Building 600, RecKey #1996250134901, Status: Inactive, an approximate 150-gallon fuel oil spill occurred near Building 600. Contaminated soils discovered from an unrelated initial spill.
Contaminated sites, DEC recognized, non-Superfund non-RCRA	U04	U04-02	C	Low	C	YKHC Building 600, RecKey #1996250134901, Status: Inactive, an approximate 150-gallon fuel oil spill occurred near Building 600. Contaminated soils discovered from an unrelated initial spill.
Closed Leaking Underground Fuel Storage Tank (LUST) Sites	U08	U08-01	C	Low	C	YKHC Hospital, RecKey #1992250007651, Event ID 639, Facility ID 29. site assessment identified GRO and DRO in the soil around USTs.
Highways and roads, dirt/gravel	X24	X24-03	C	Low	C	Assume 1-20 roads in Zone C
Electric power generation (fossil fuels)	X36	X36-01	C	High	C	YKHC Hospital
Contaminated sites, DEC recognized, non-Superfund non-RCRA	U04	U04-03	D	Low	C	YKHC Hospital, RecKey #1992250107651, Status: Active, site assessment identified GRO and DRO contaminated soil around the USTs.
Contaminated sites, DEC recognized, non-Superfund non-RCRA	U04	U04-04	D	Low	C	Bethel Utilities Corp. Power Plant, RecKey #1995250106101, Status: Inactive, contamination found during site assessment, structure has dirt floor with contamination remaining, undergoing in-situ remediation.
Abandoned wells	W01	W01-01	D	High	C	Pacifica House & Diane's Restaurant
Highways and roads, dirt/gravel	X24	X24-04	D	Low	C	Assume 1-20 roads in Zone D
Electric power generation (fossil fuels)	X36	X36-02	D	High	C	Bethel Utilities

APPENDIX C

Drinking Water Protection Area and Potential and Existing Contaminant Sources (Map C)

**Public Water Well System for PWS #271172.001 Lakeview Apartments Water System
Showing Potential and Existing Sources of Contamination**



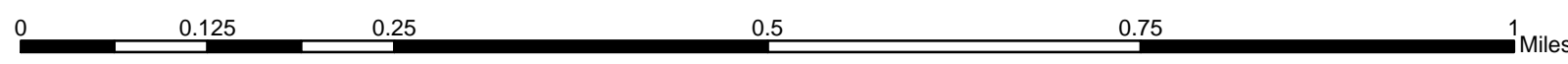
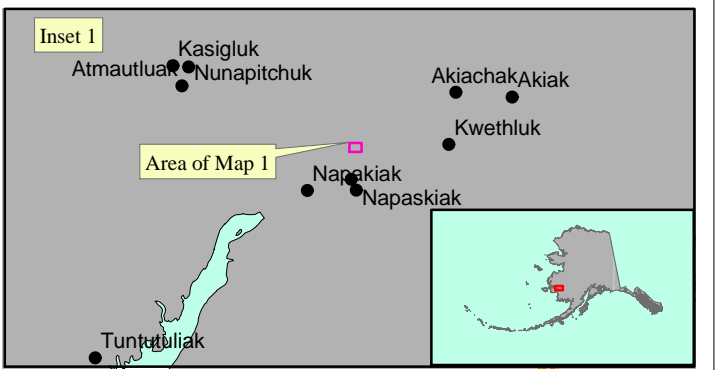
LEGEND

	Public Water System Well	Hydrography/Physical
Transportation		
	Primary Route (Class 1)	
	Secondary Route (Class 2)	
	Road (Class 3)	
	Road (Class 4)	
	Road (Class 5, Four-wheel drive)	
Groundwater Protection Zones		
	Zone A Protection Area— Several Months Travel Time	
	Zone B Protection Area— 2 Years Travel Time	
	Zone C Protection Area— 5 Years Travel Time	
	Zone D Protection Area— 10 Years Travel Time	
Existing or Potential Contaminant Sources		
	Laundromat without dry cleaning (C22)	
	Motor vehicle repair shop (C31)	
	Domestic wastewater collection systems (lift station) (D01)	
	Injection well (Class V) Aquifer recharge well (D30)	
	Injection well (Class V) Direct heat reinjection well (D33)	
	Aboveground diesel tank (T06)	
	Underground diesel tank (T08)	
	Nonresidential aboveground heating oil tank (T14)	
	Contaminated sites, DEC recognized, non-Superfund, non-RCRA (U04)	
	Closed leaking underground fuel storage tank (LUST) (lubricants or other petroleum products) (U08)	
	Abandoned well (W01)	
	Glycol (X07)	
	Electric power generation (X36)	
	Medical/veterinary facilities (X40)	

Data Sources:
 Contaminant Sources, Public Water System Wells, Contours
 Alaska Department of Environmental Conservation (ADEC)
 Critical Facilities, Federal Emergency Management Agency (FEMA)

All other data:
 United States Geological Survey (USGS)
 Drinking Water Protection Areas based on "Alaska Drinking Water Protection Program - Guidance Manual for Class A Public Water Systems" published by ADEC

URS Corporation does not guarantee the accuracy or validity of the data provided.



Lakeview Apartments Water System
PWS 271172.001

APPENDIX D

Vulnerability Analysis for Public Drinking Water Source (Charts 1-14)

Chart 1. Susceptibility of the wellhead - Lakeview Apartments Water System (PWS No.271172.001)

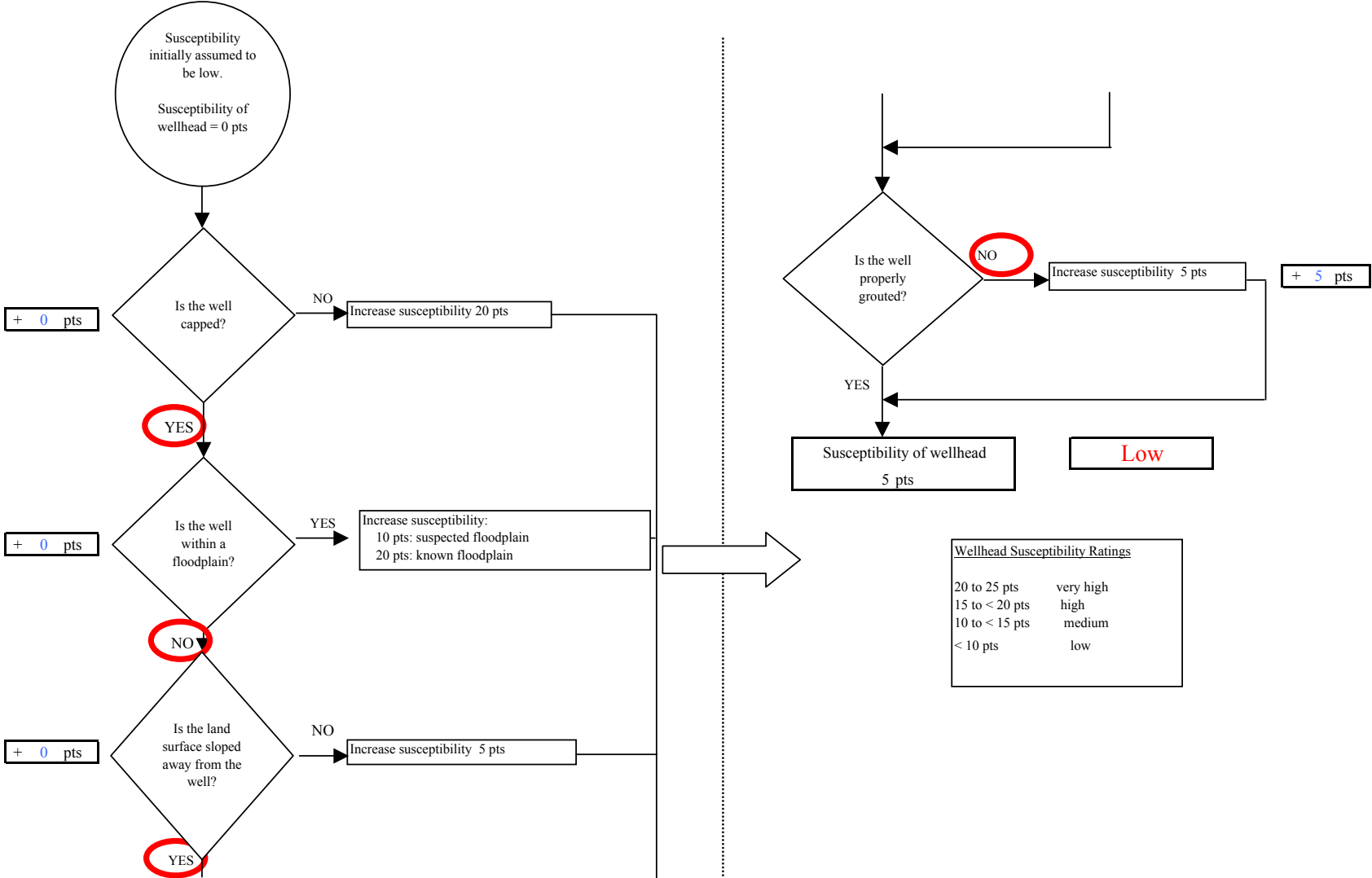


Chart 2. Susceptibility of the aquifer Lakeview Apartments Water System (PWS No.271172.001)

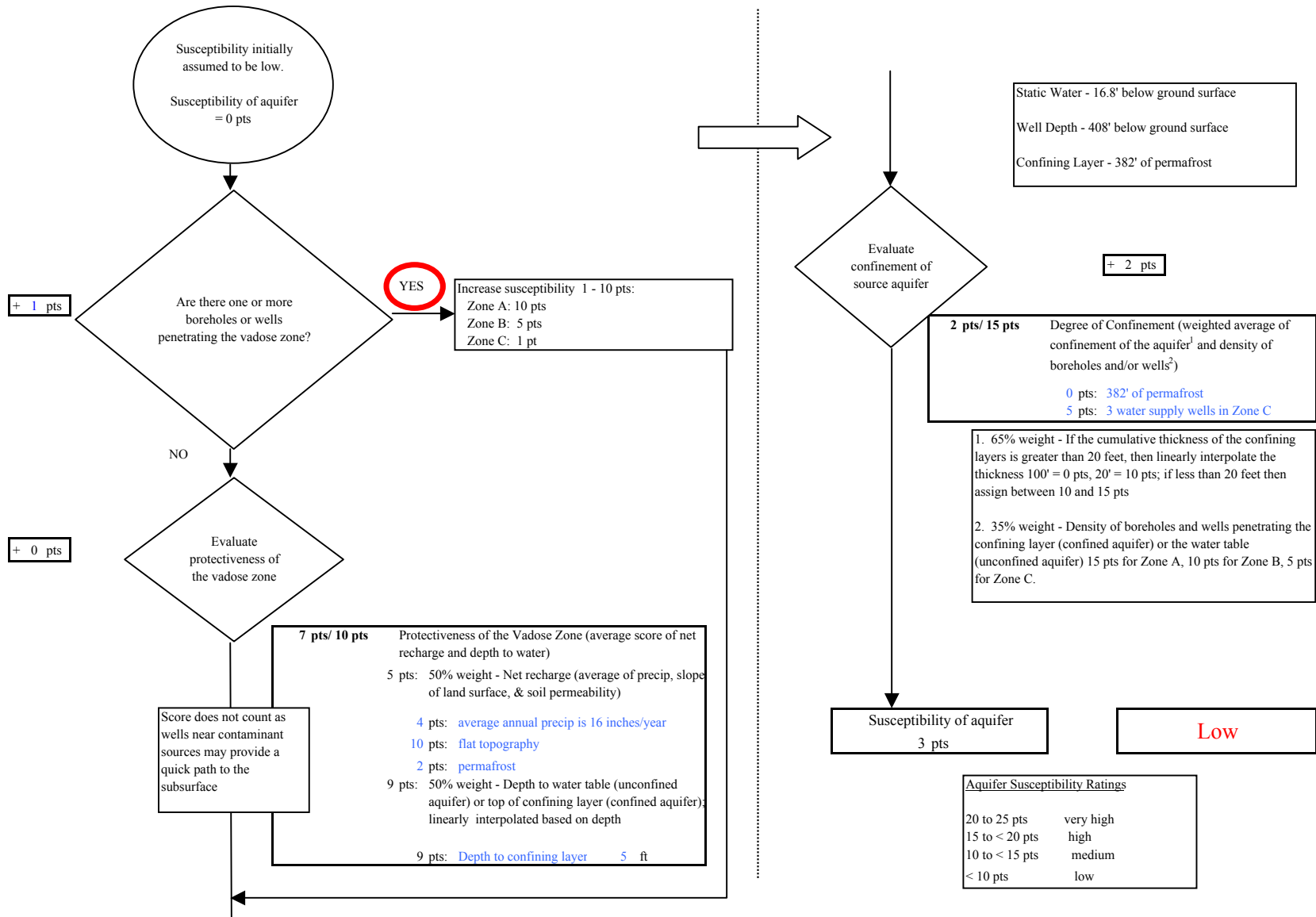


Chart 3. Contaminant risks for Lakeview Apartments Water System (PWS No.271172.001) - Bacteria & Viruses

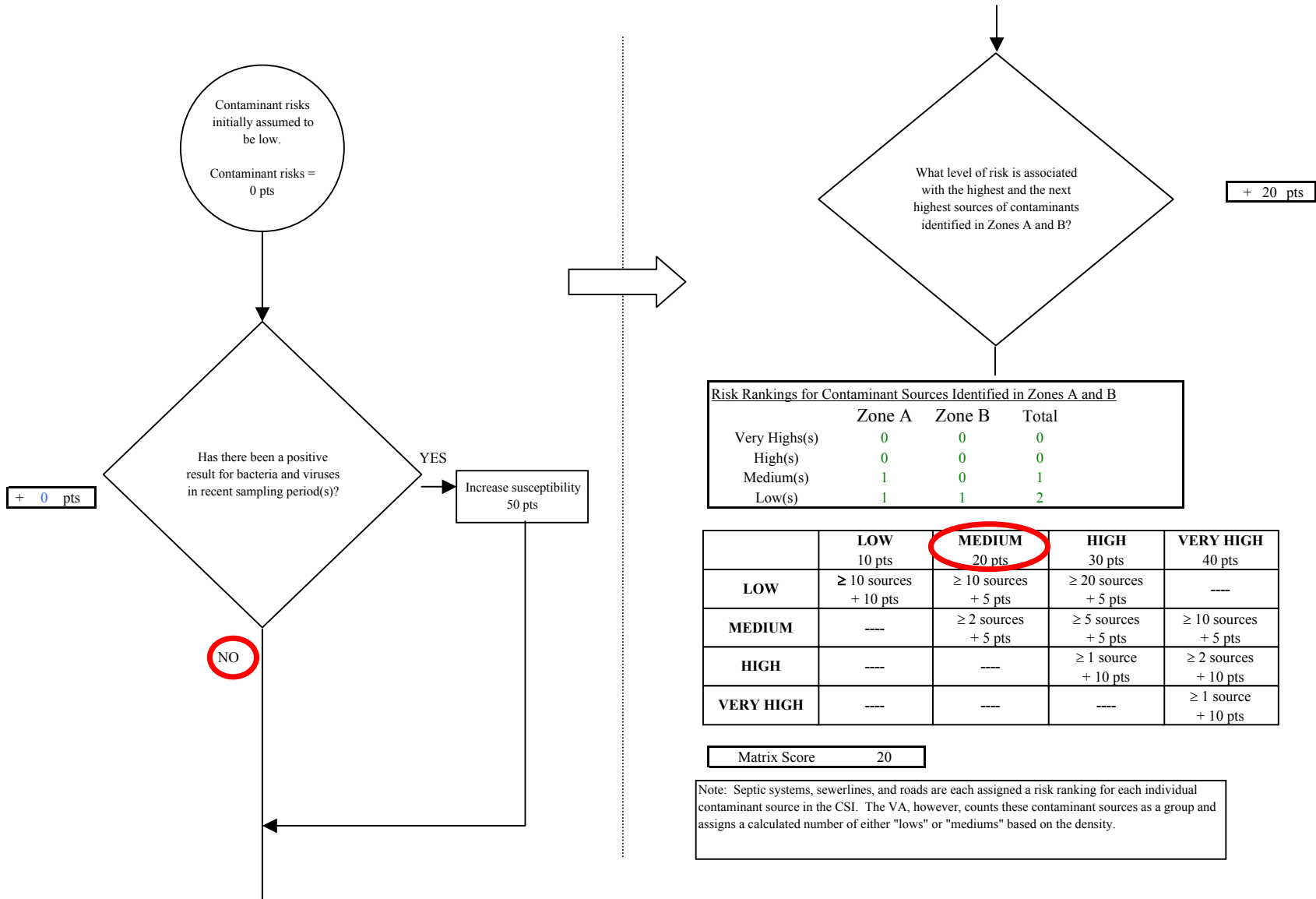


Chart 3. Contaminant risks for Lakeview Apartments Water System (PWS No.271172.001) - Bacteria & Viruses

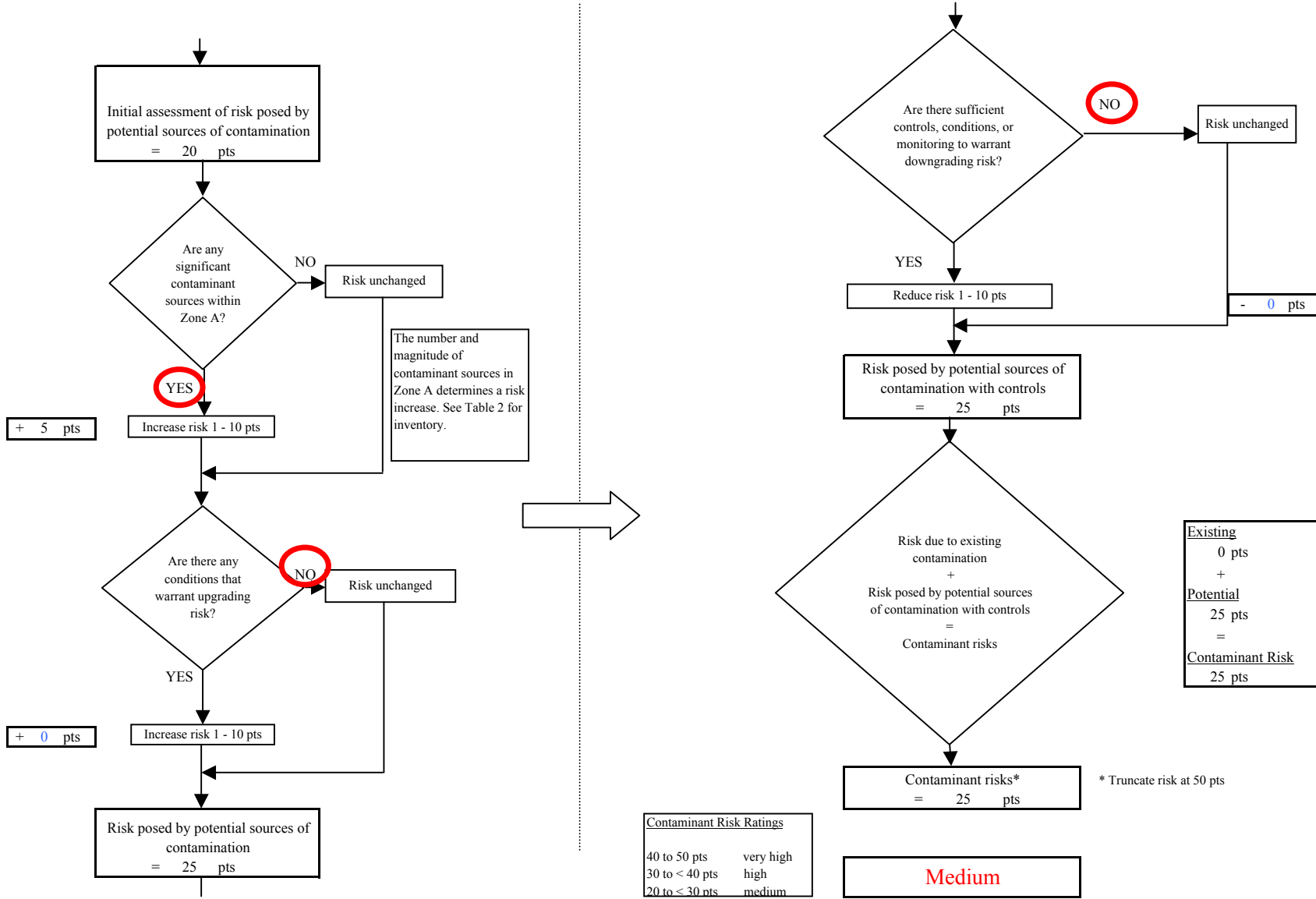


Chart 4. Vulnerability analysis for Lakeview Apartments Water System (PWS No.271172.001) - Bacteria & Viruses

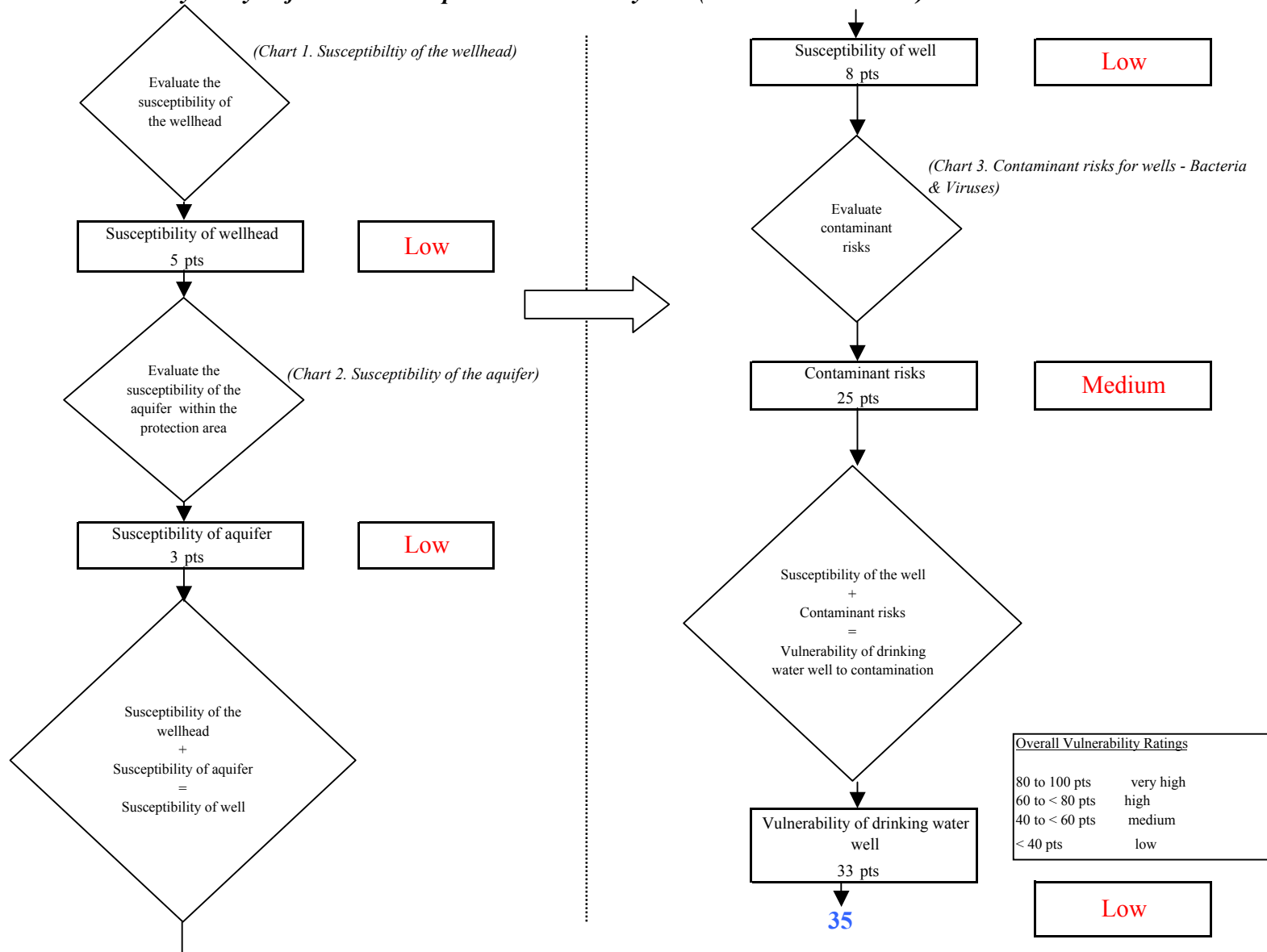


Chart 5. Contaminant risks for Lakeview Apartments Water System (PWS No.271172.001) - Nitrates and Nitrites

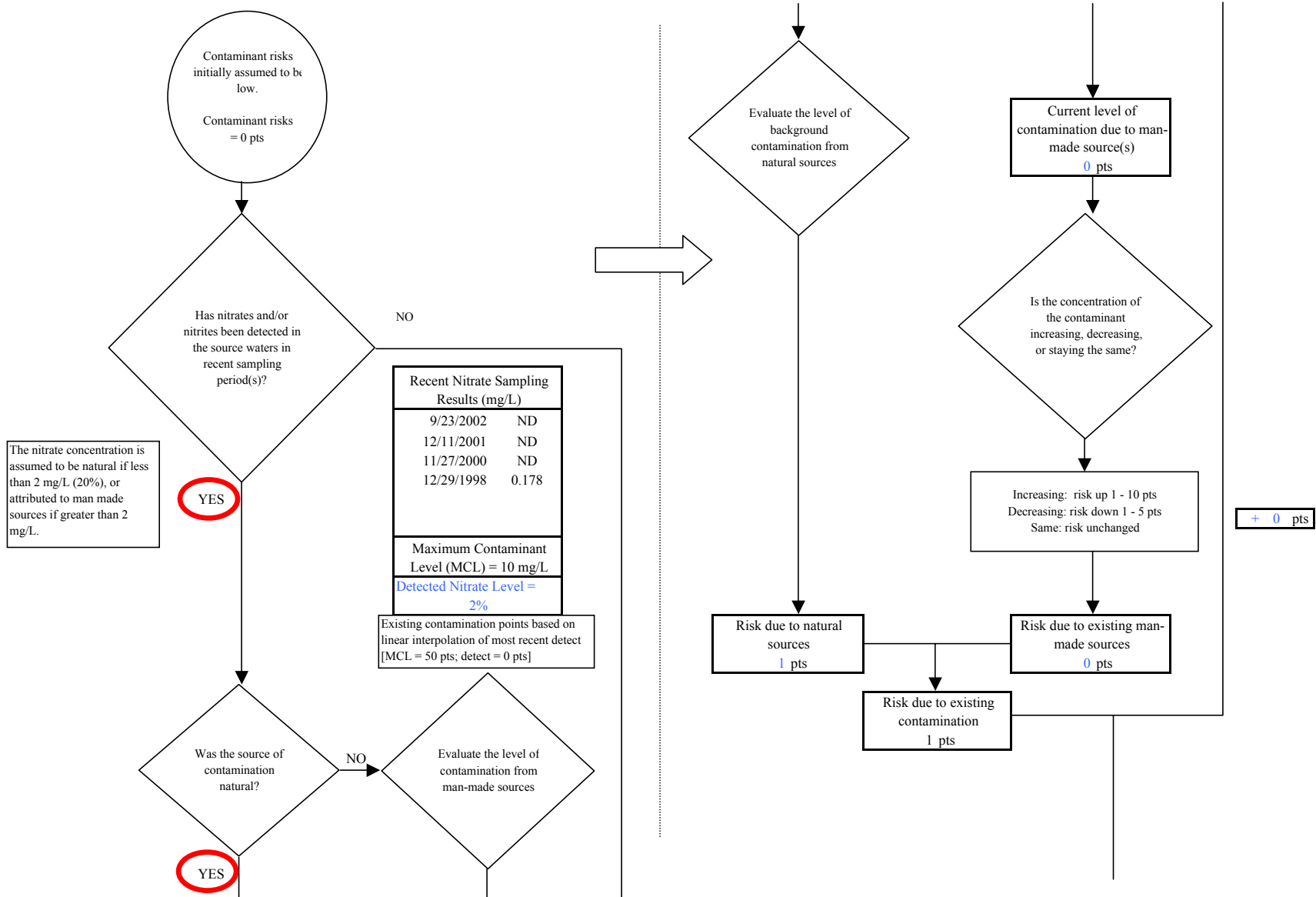


Chart 5. Contaminant risks for Lakeview Apartments Water System (PWS No.271172.001) - Nitrates and Nitrites

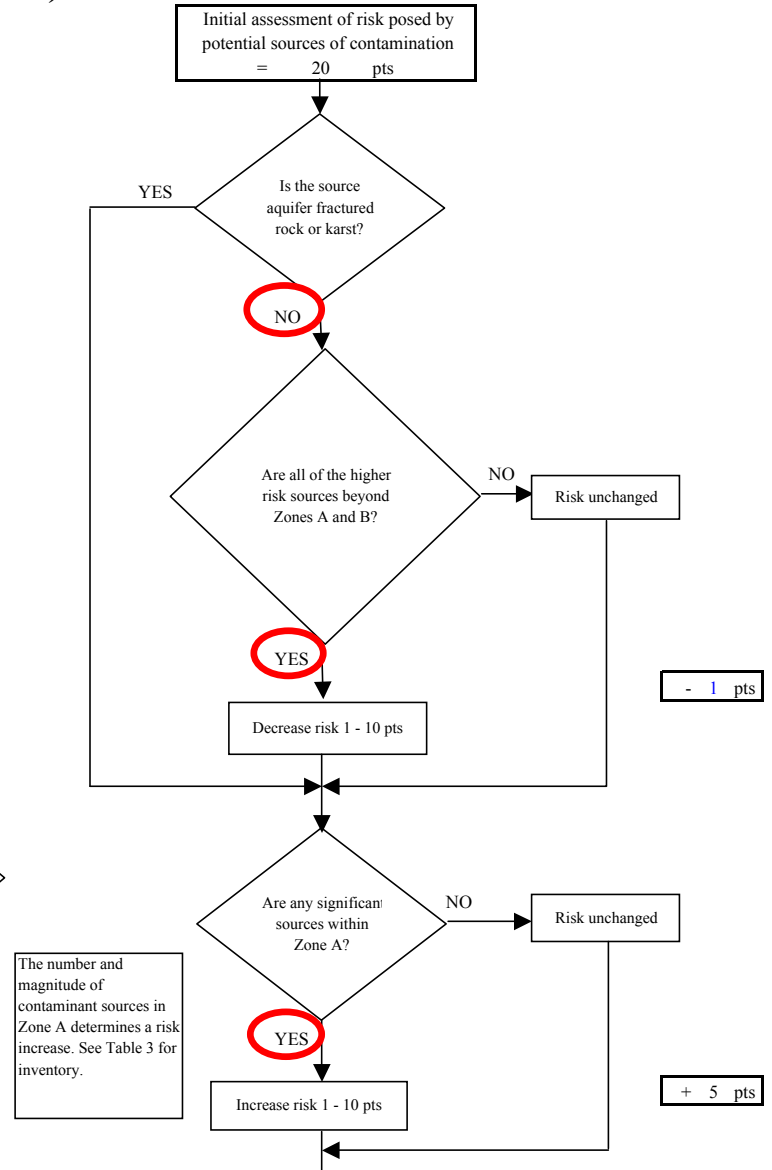
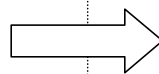
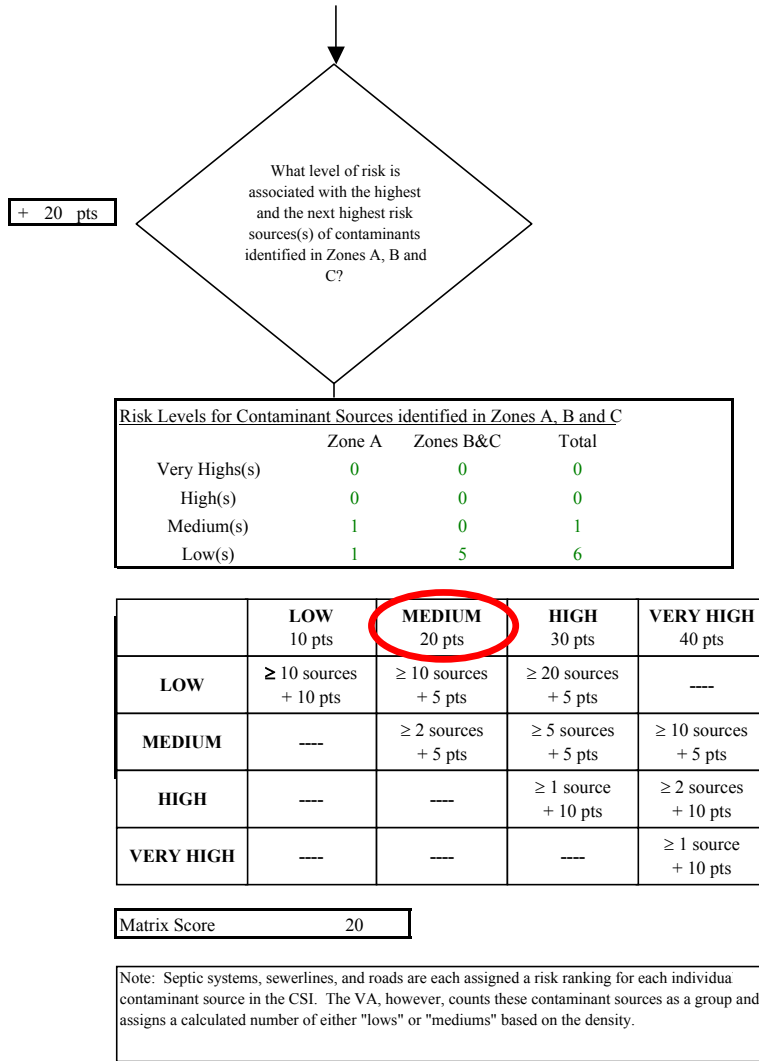


Chart 5. Contaminant risks for Lakeview Apartments Water System (PWS No.271172.001) - Nitrates and Nitrites

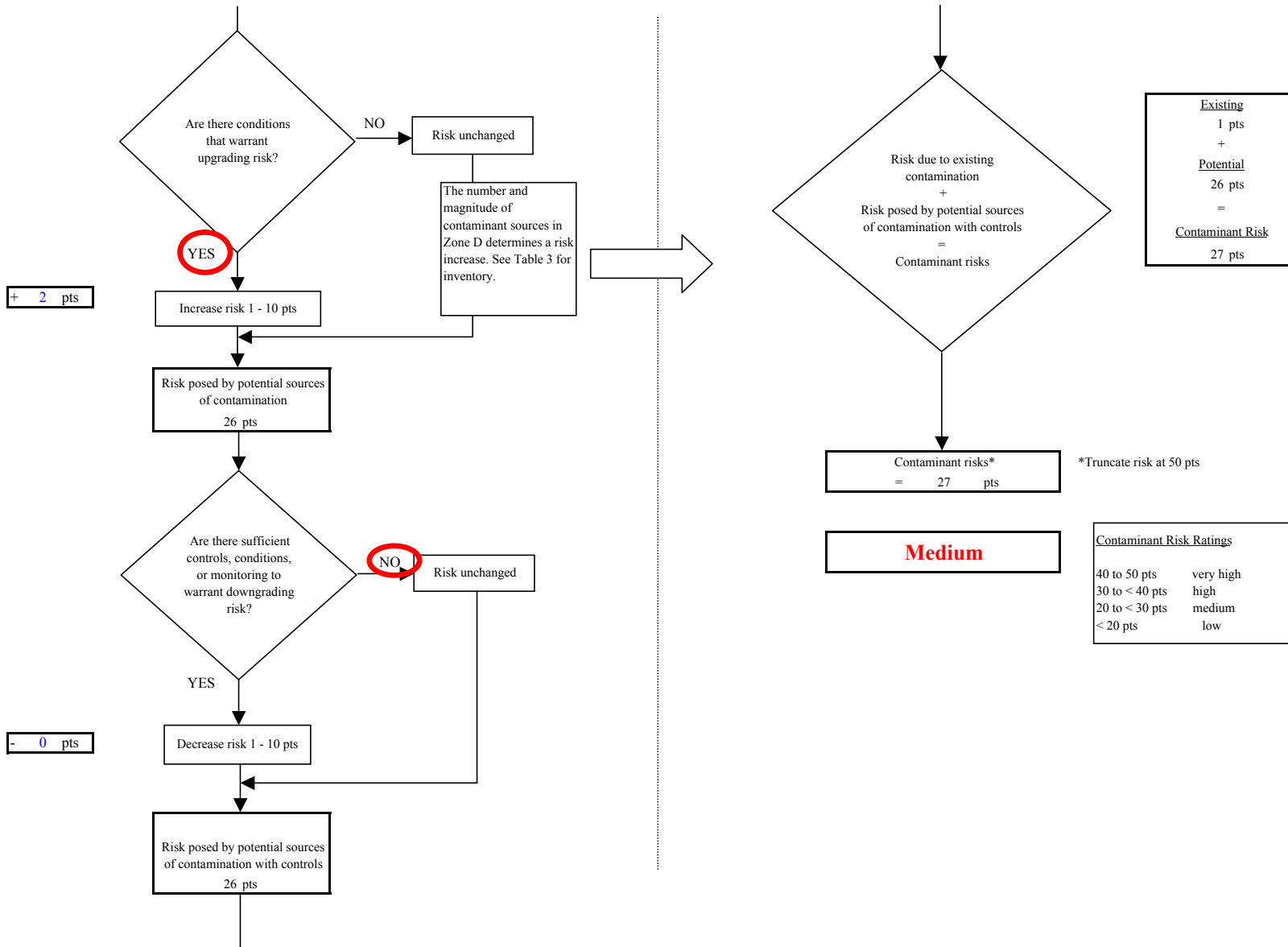


Chart 6. Vulnerability analysis for Lakeview Apartments Water System (PWS No.271172.001) - Nitrates and Nitrites

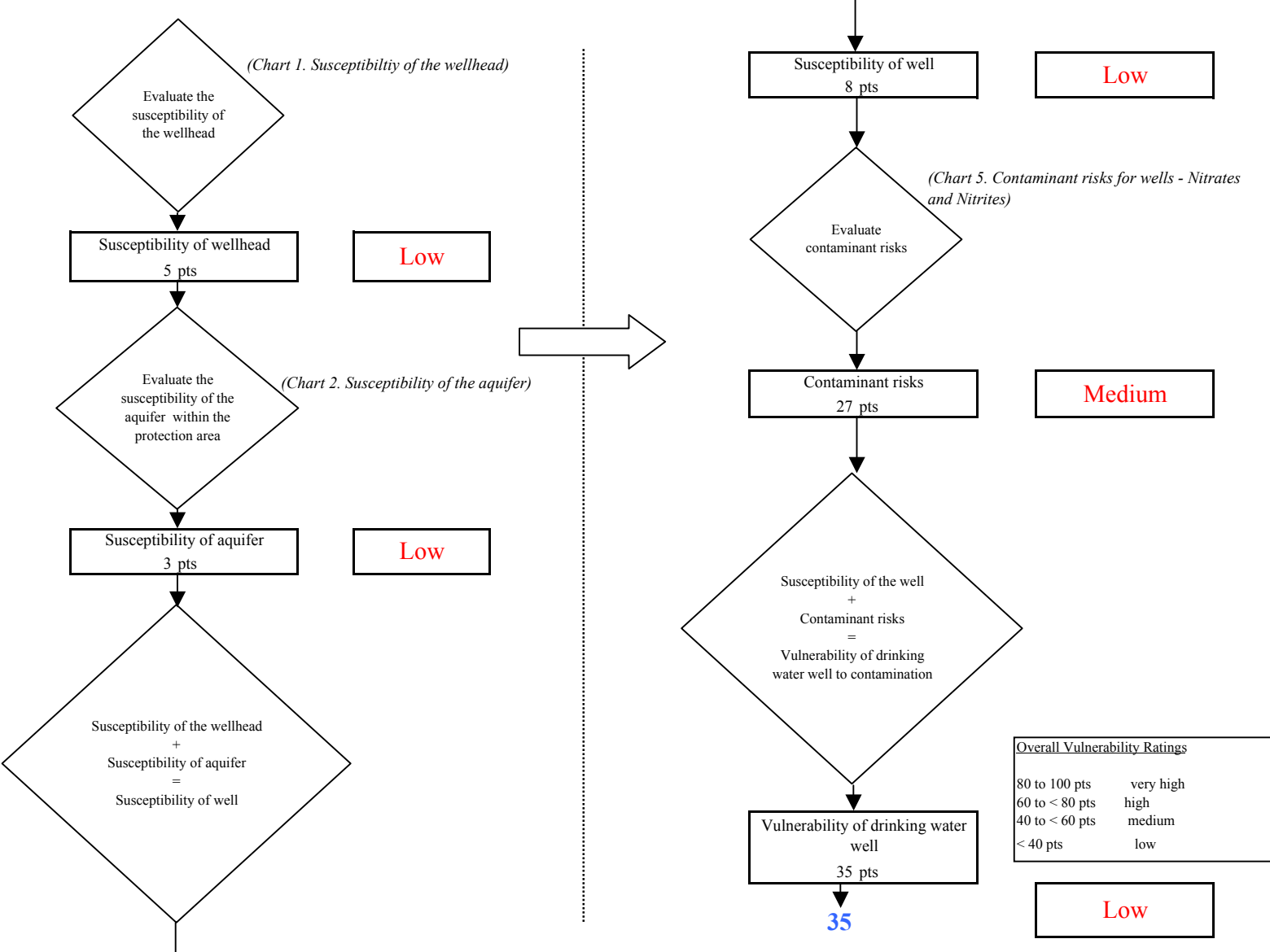


Chart 7. Contaminant risks for Lakeview Apartments Water System (PWS No.271172.001) - Volatile Organic Chemicals

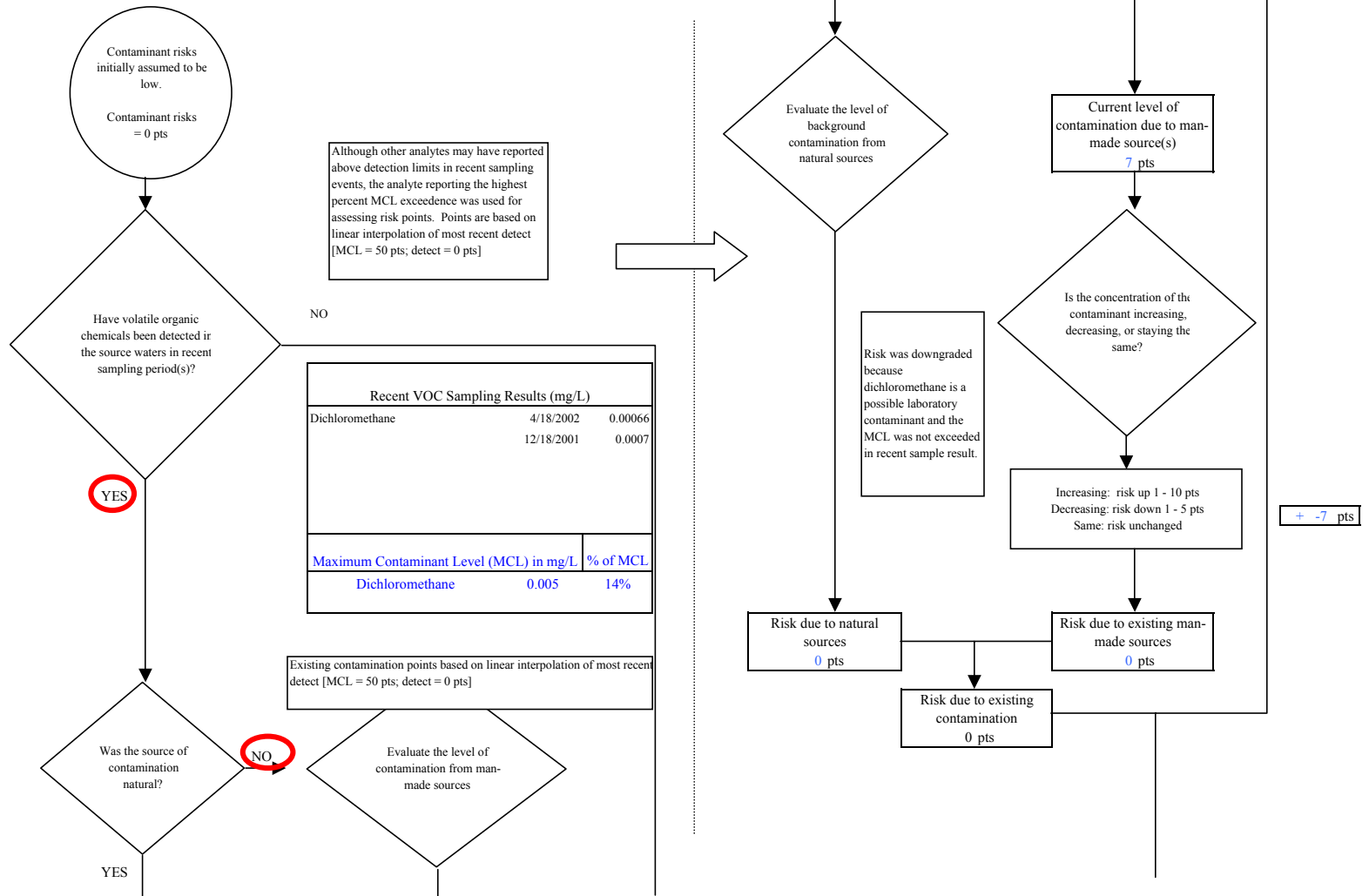


Chart 7. Contaminant risks for Lakeview Apartments Water System (PWS No.271172.001) - Volatile Organic Chemicals

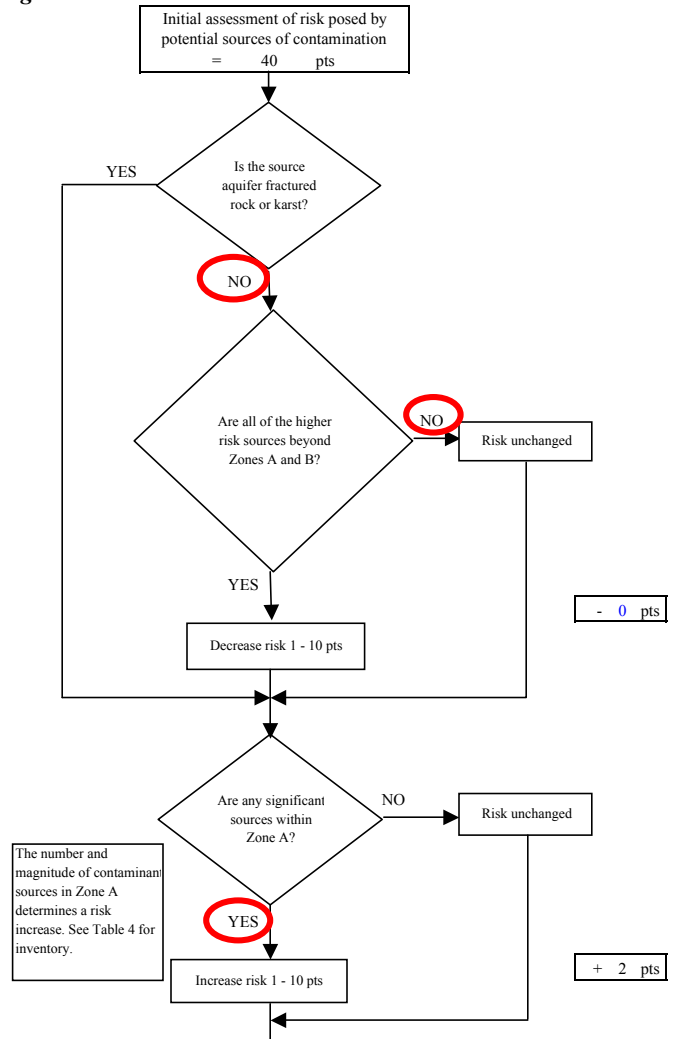
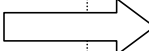
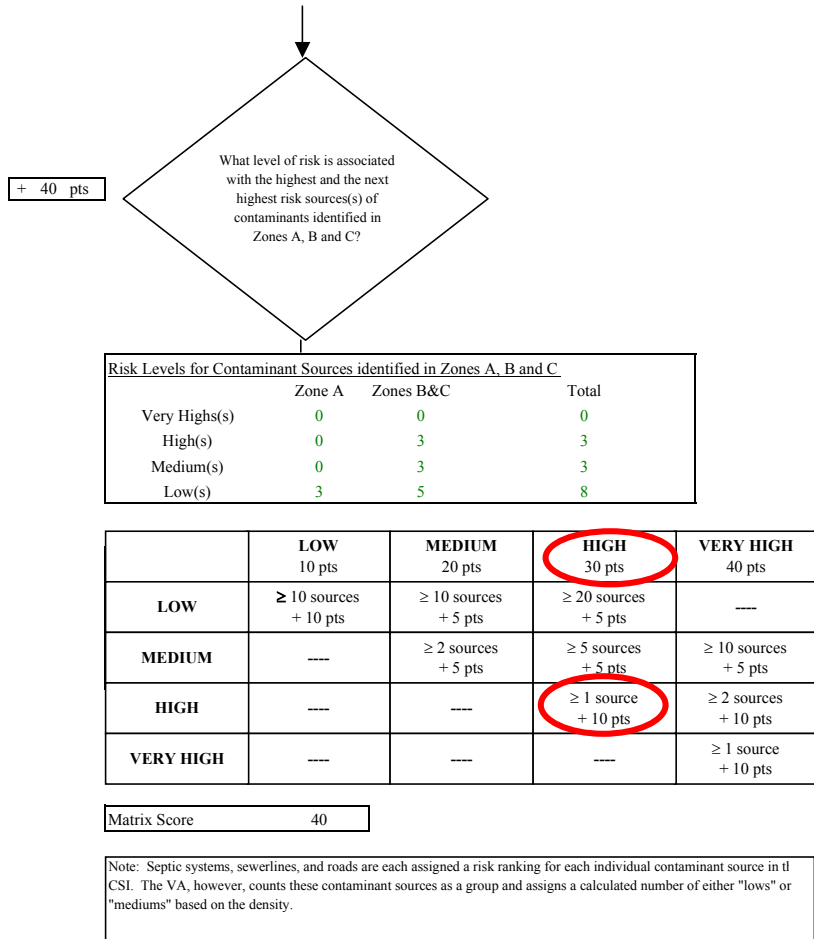


Chart 7. Contaminant risks for Lakeview Apartments Water System (PWS No.271172.001) - Volatile Organic Chemicals

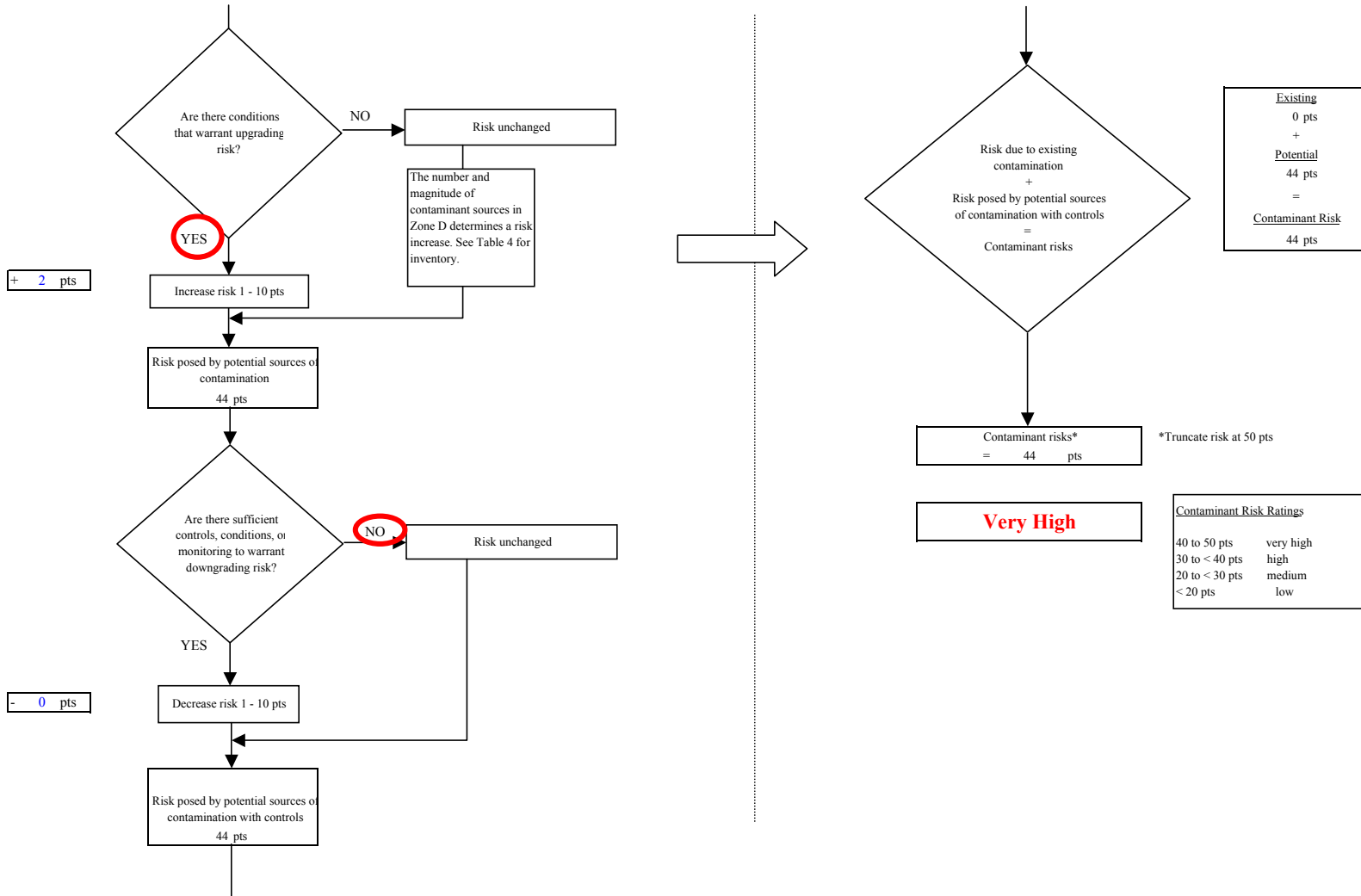


Chart 8. Vulnerability analysis for Lakeview Apartments Water System (PWS No.271172.001) - Volatile Organic Chemicals

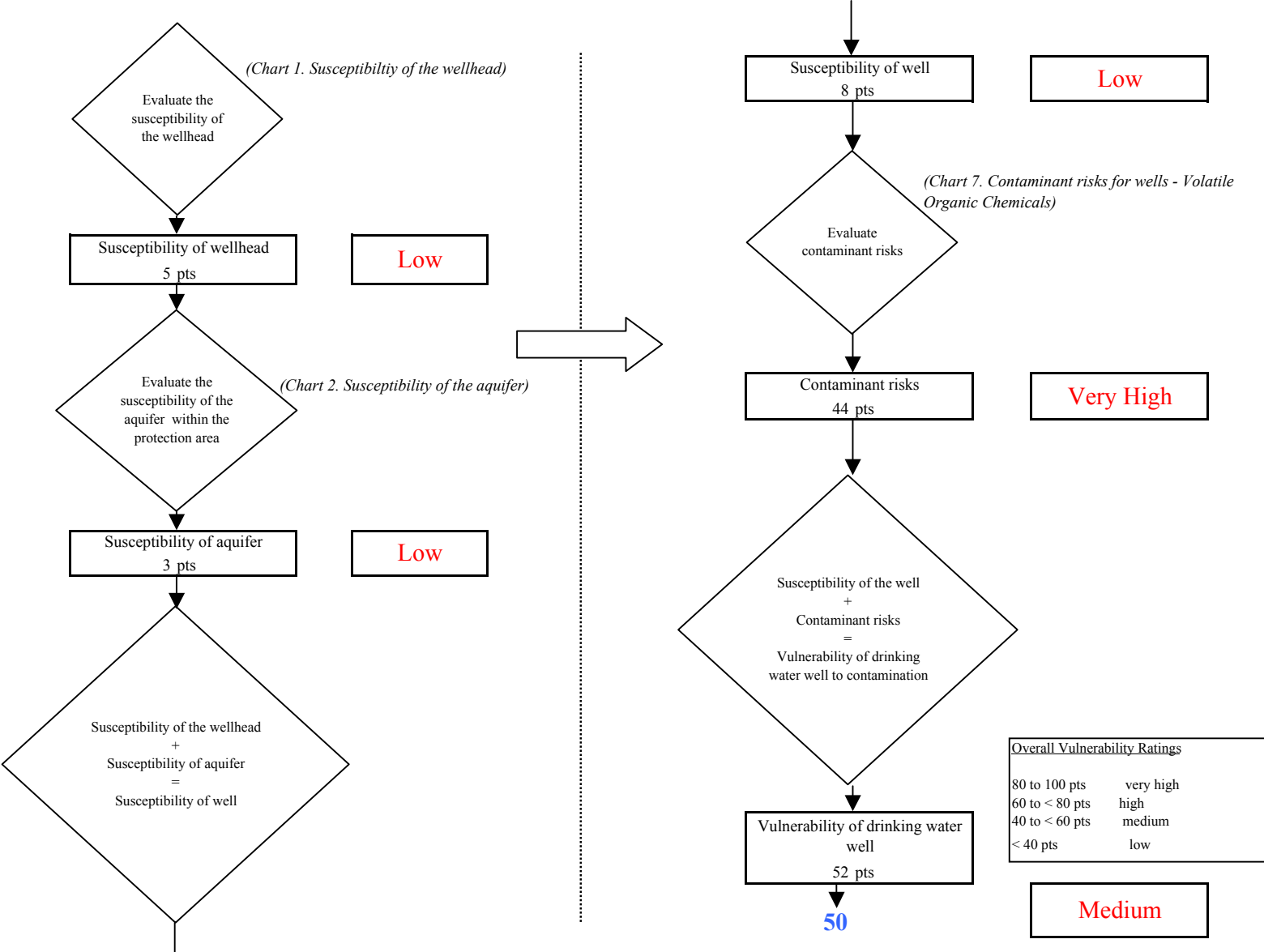


Chart 9. Contaminant risks for Lakeview Apartments Water System (PWS No.271172.001) - Heavy Metals, Cyanide and Other Inorganic Chemicals

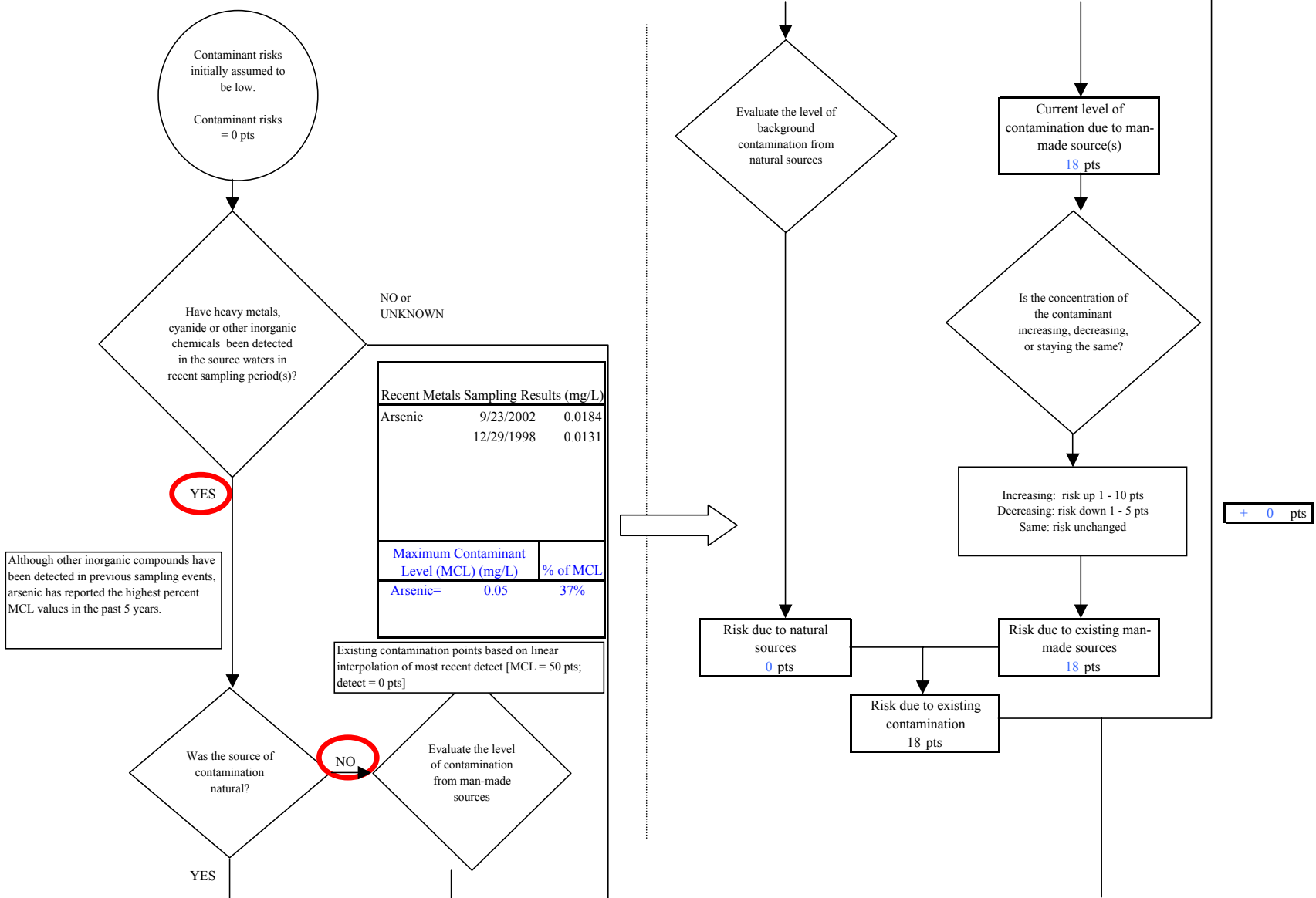


Chart 9. Contaminant risks for Lakeview Apartments Water System (PWS No.271172.001) - Heavy Metals, Cyanide and Other Inorganic Chemicals

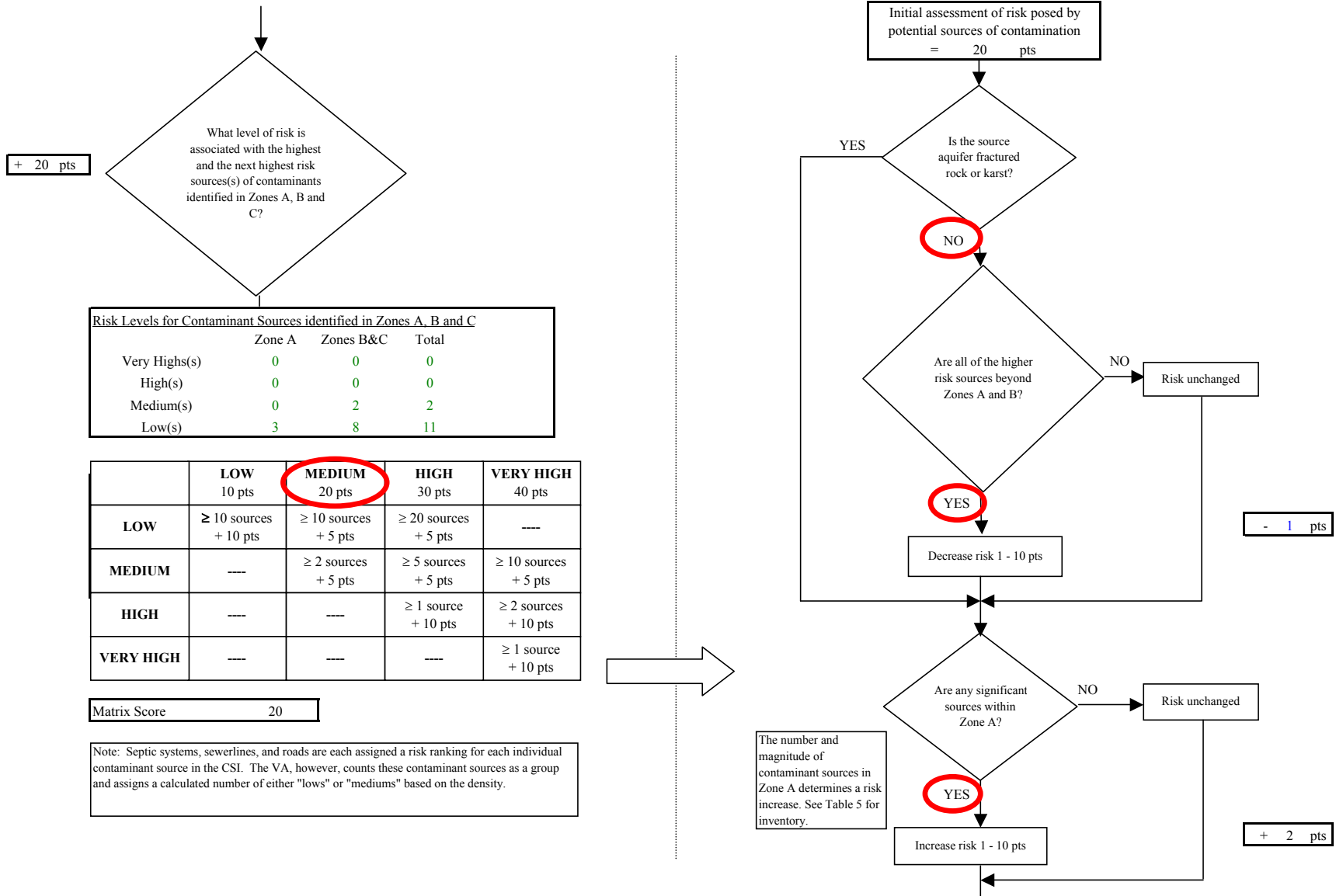


Chart 9. Contaminant risks for Lakeview Apartments Water System (PWS No.271172.001) - Heavy Metals, Cyanide and Other Inorganic Chemicals

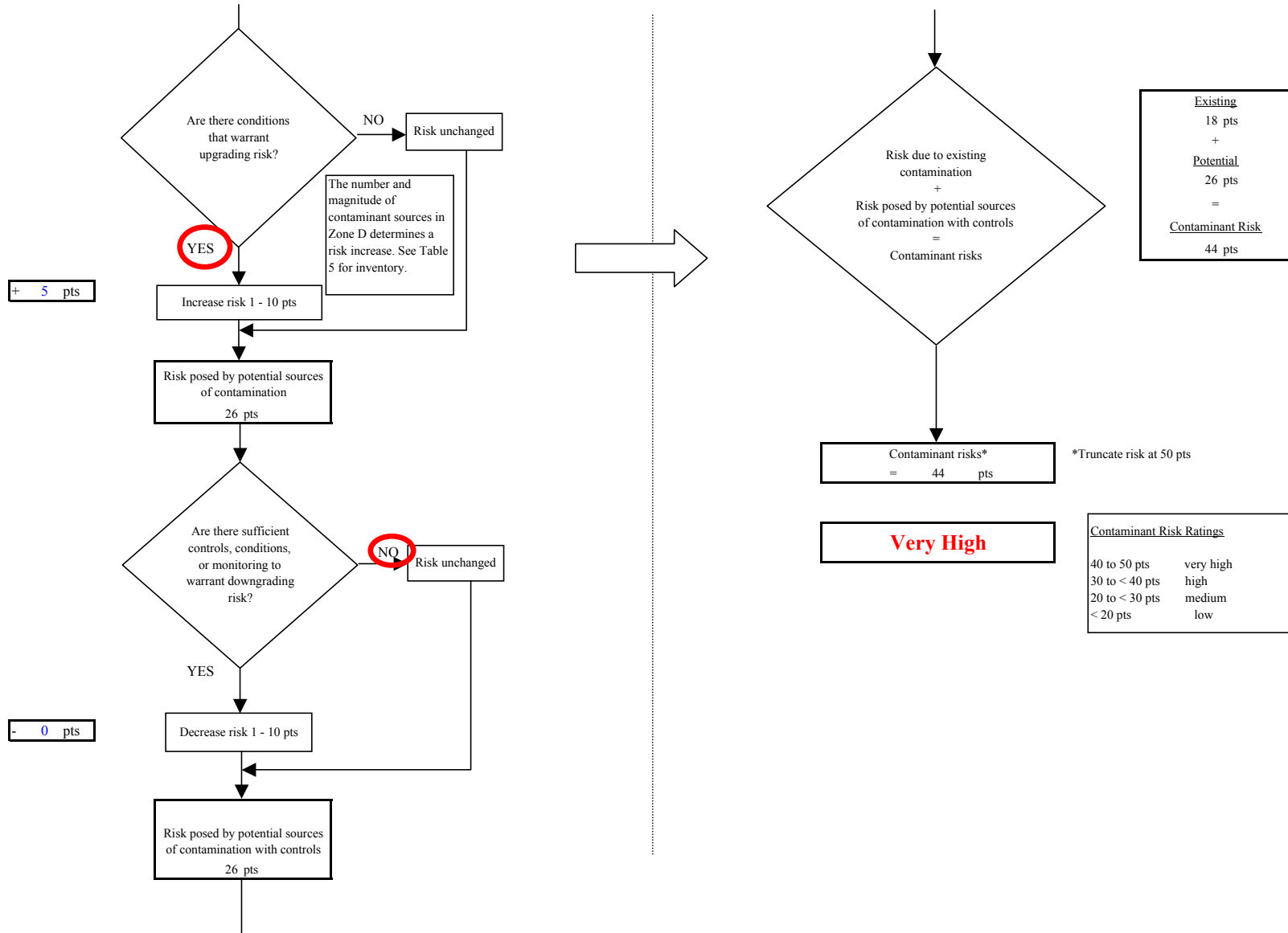


Chart 10. Vulnerability analysis for Lakeview Apartments Water System (PWS No.271172.001) - Heavy Metals, Cyanide and Other Inorganic Chemicals

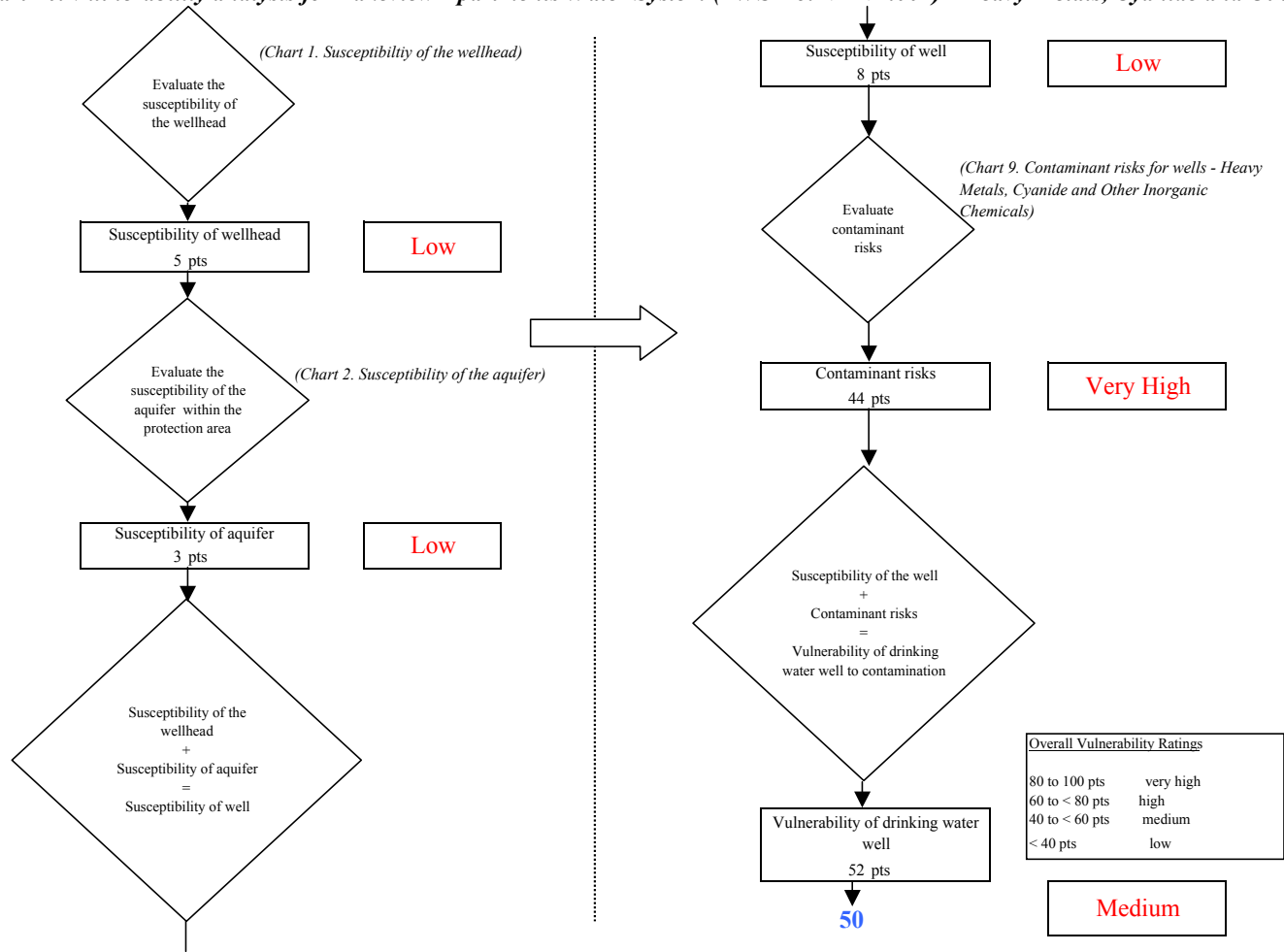


Chart 11. Contaminant risks for Lakeview Apartments Water System (PWS No.271172.001) - Synthetic Organic Chemicals

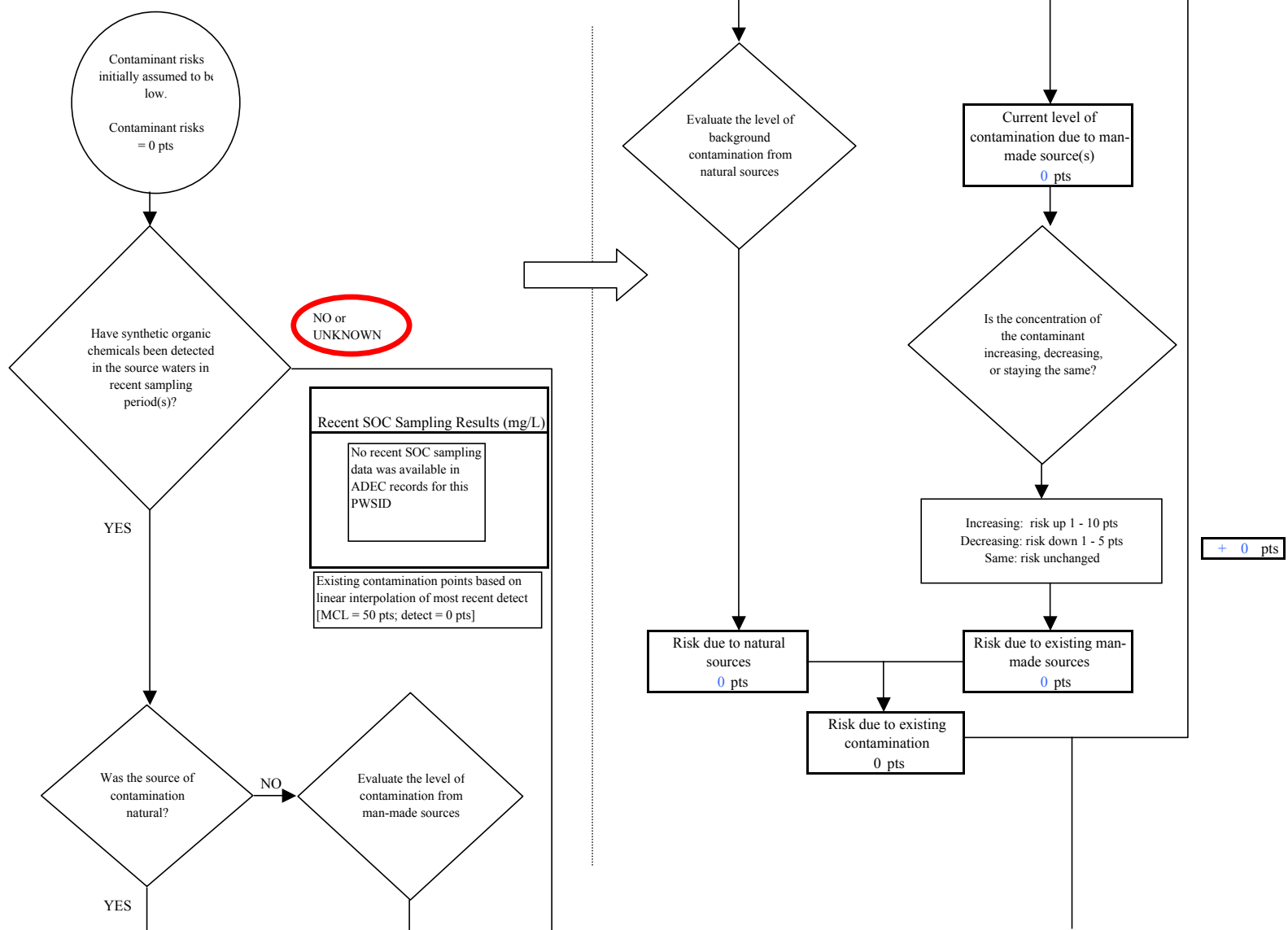
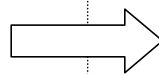
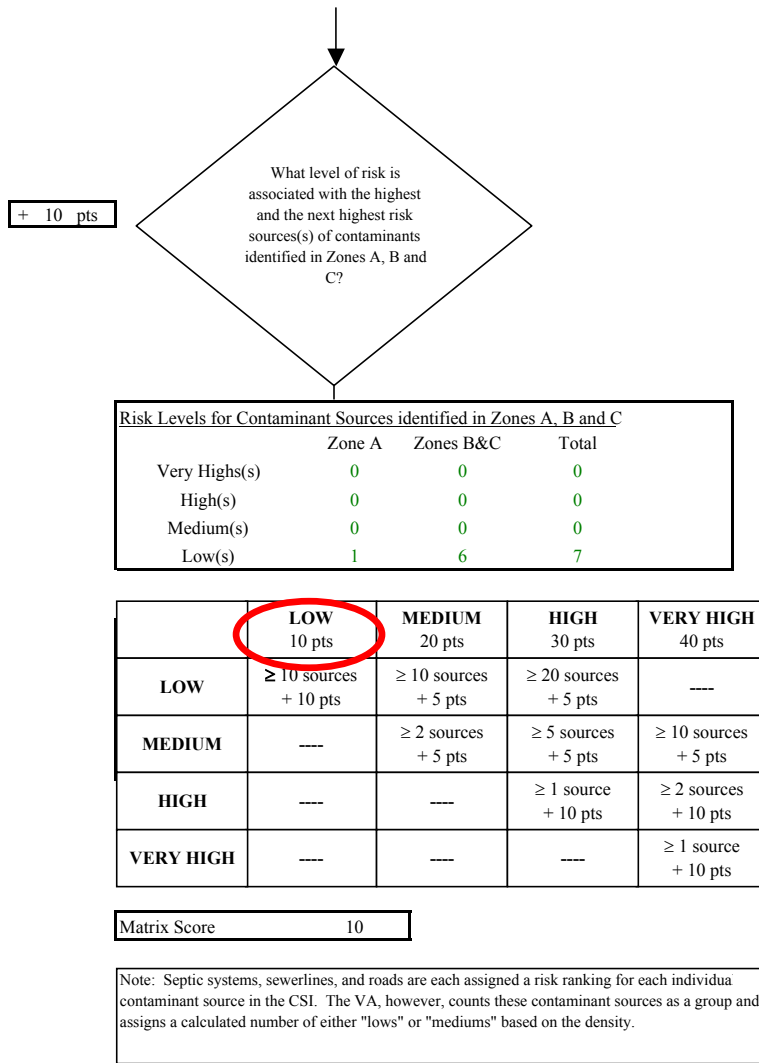


Chart 11. Contaminant risks for Lakeview Apartments Water System (PWS No.271172.001) - Synthetic Organic Chemicals



The number and magnitude of contaminant sources in Zone A determines a risk increase. See Table 6 for inventory.

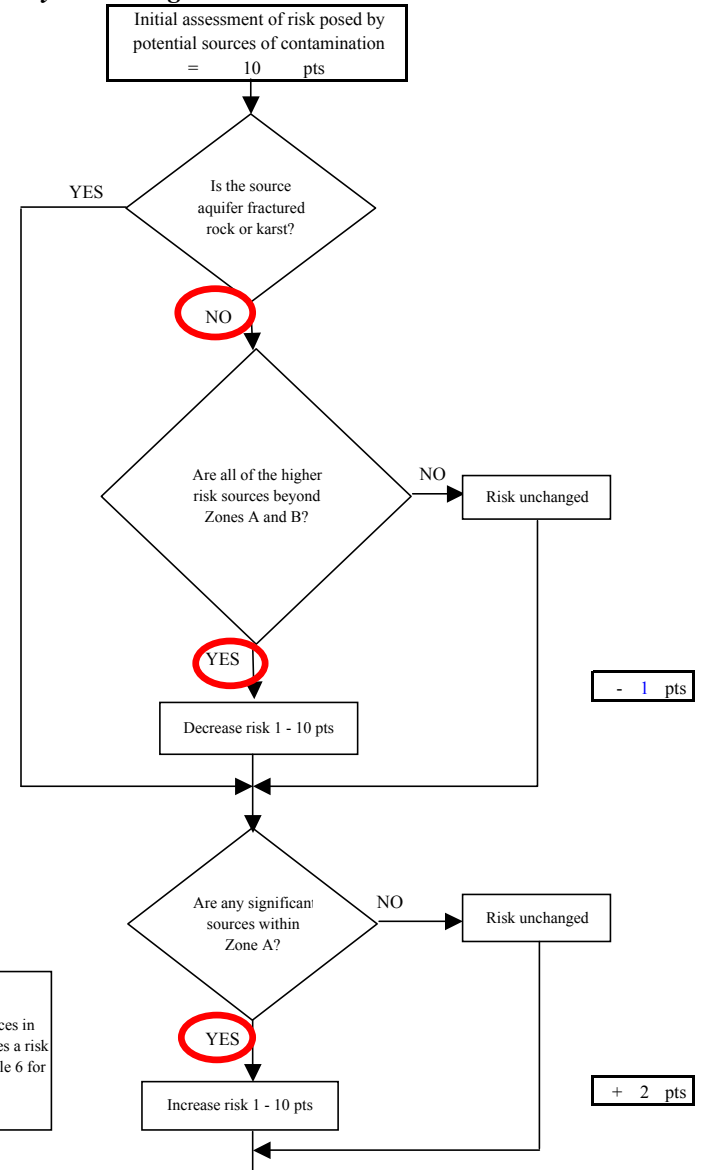


Chart 11. Contaminant risks for Lakeview Apartments Water System (PWS No.271172.001) - Synthetic Organic Chemicals

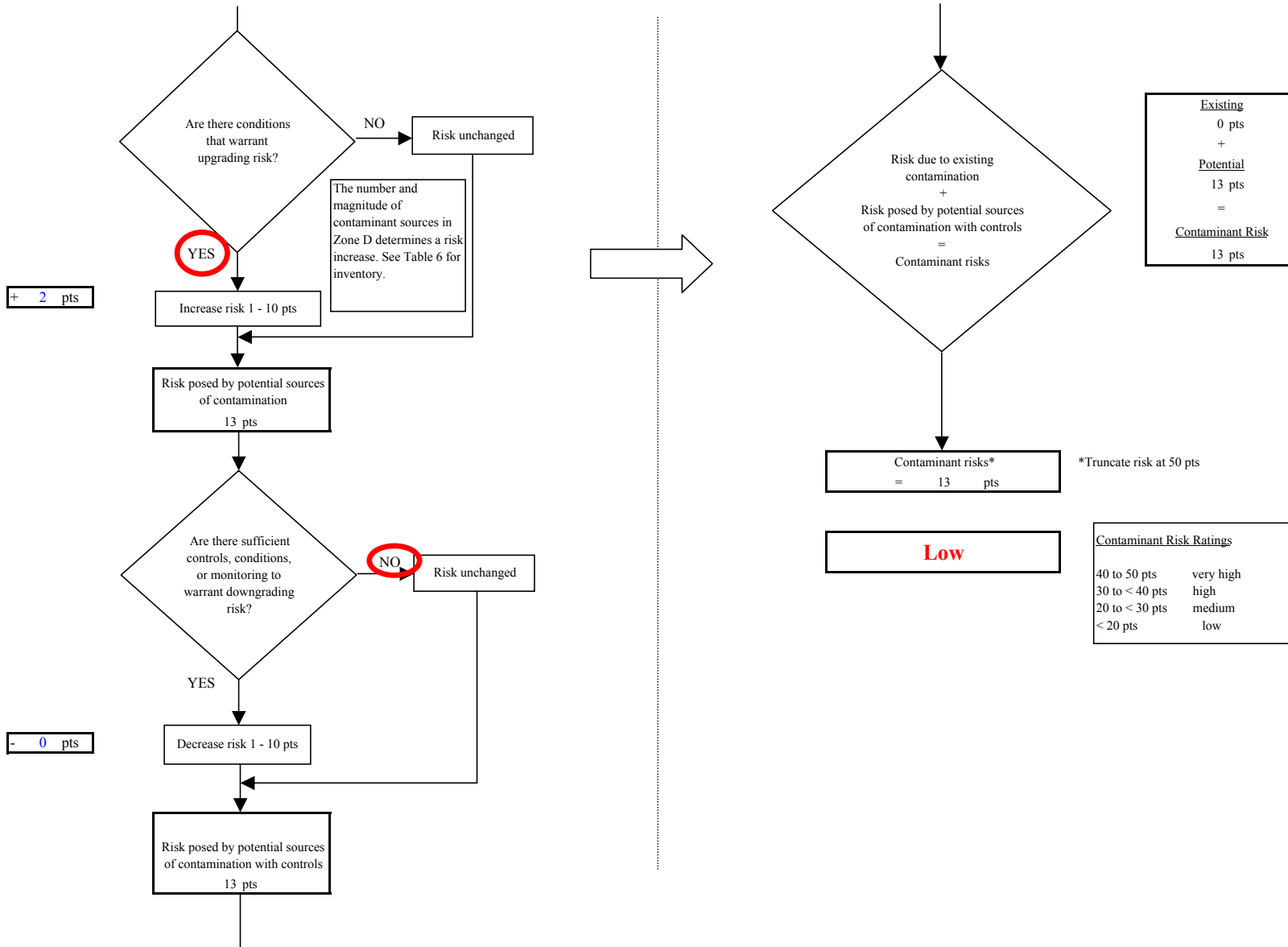


Chart 12. Vulnerability analysis for Lakeview Apartments Water System (PWS No.271172.001) - Synthetic Organic Chemicals

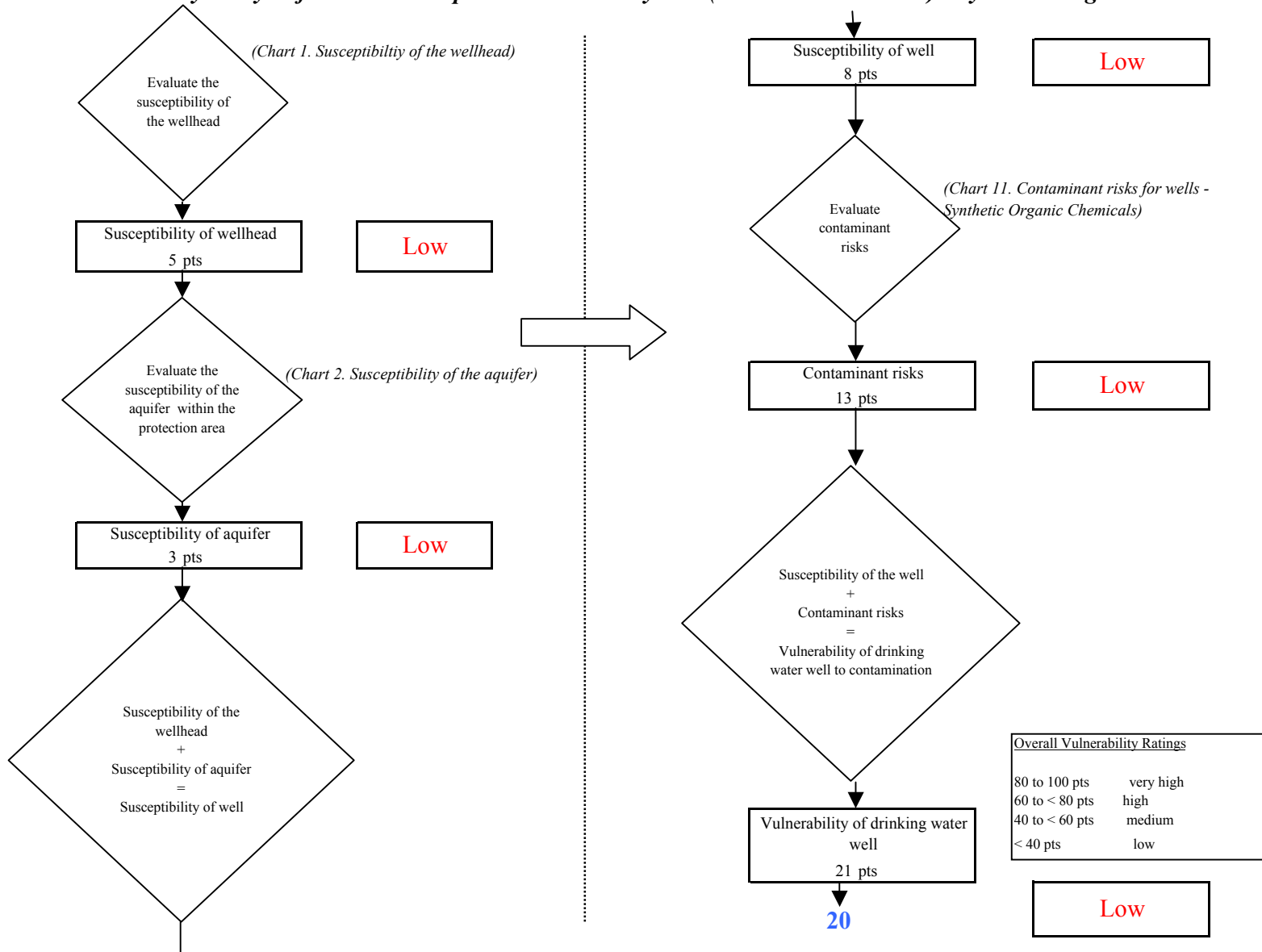


Chart 13. Contaminant risks for Lakeview Apartments Water System (PWS No.271172.001) - Other Organic Chemicals

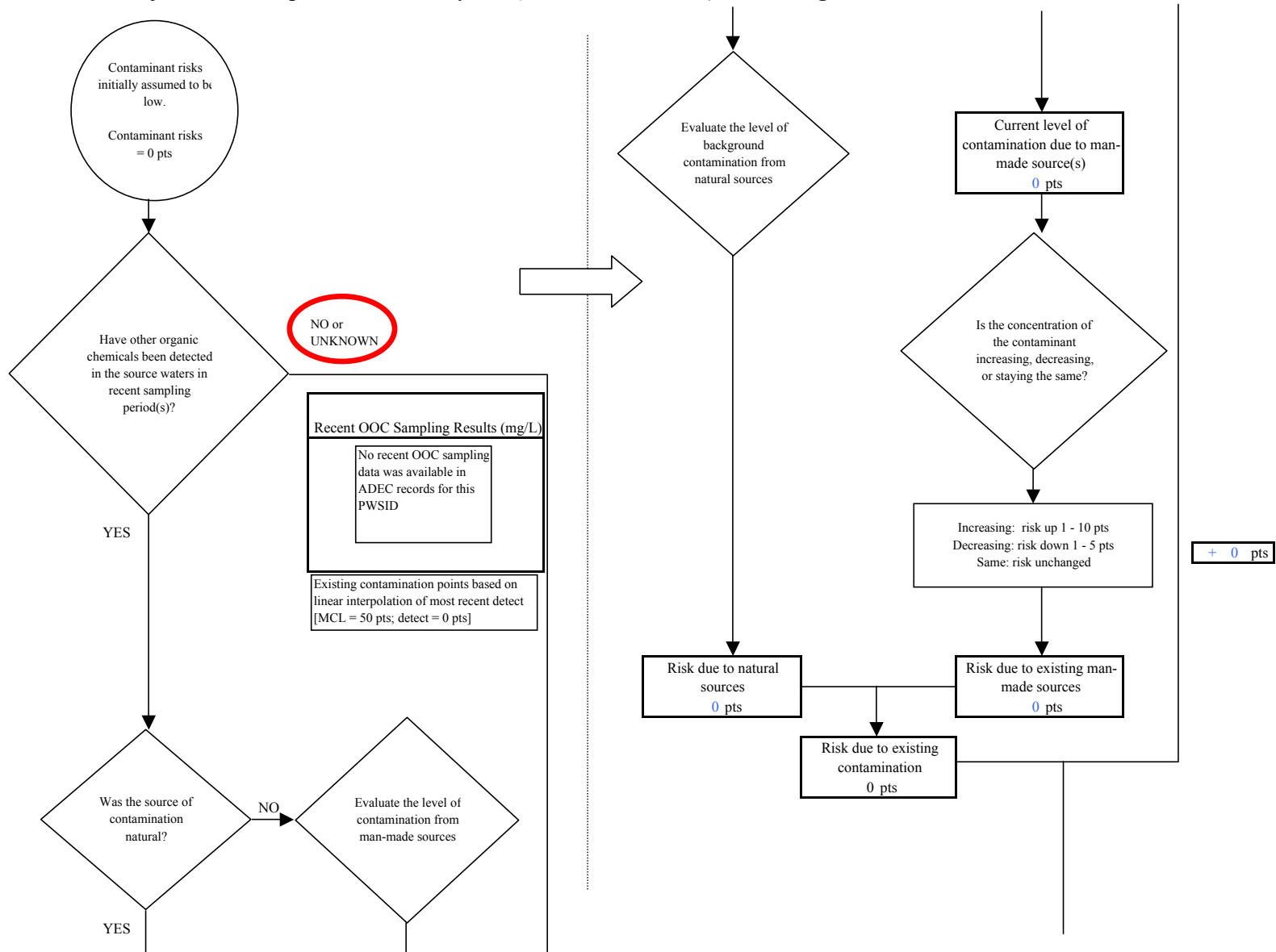


Chart 13. Contaminant risks for Lakeview Apartments Water System (PWS No.271172.001) - Other Organic Chemicals

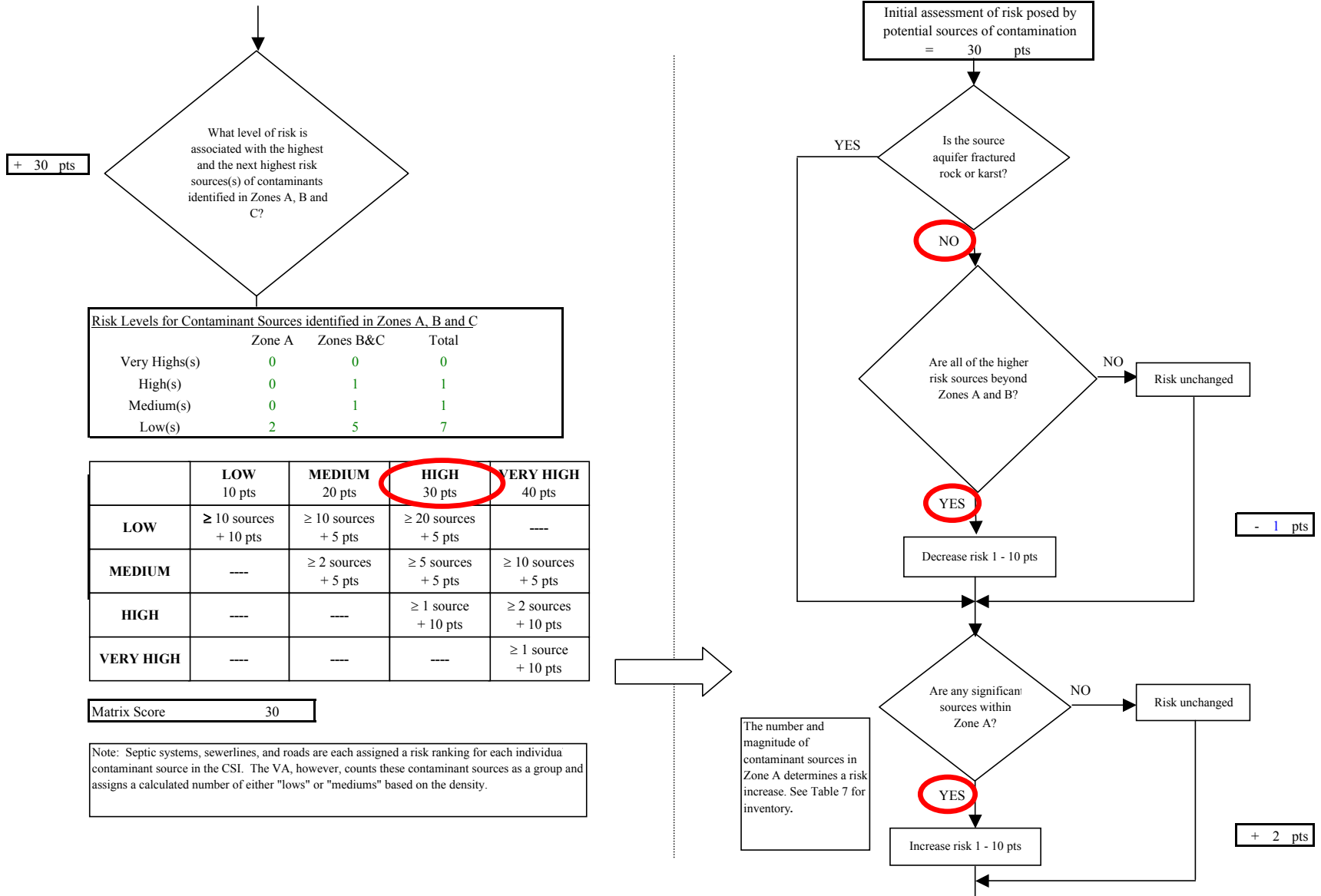


Chart 13. Contaminant risks for Lakeview Apartments Water System (PWS No.271172.001) - Other Organic Chemicals

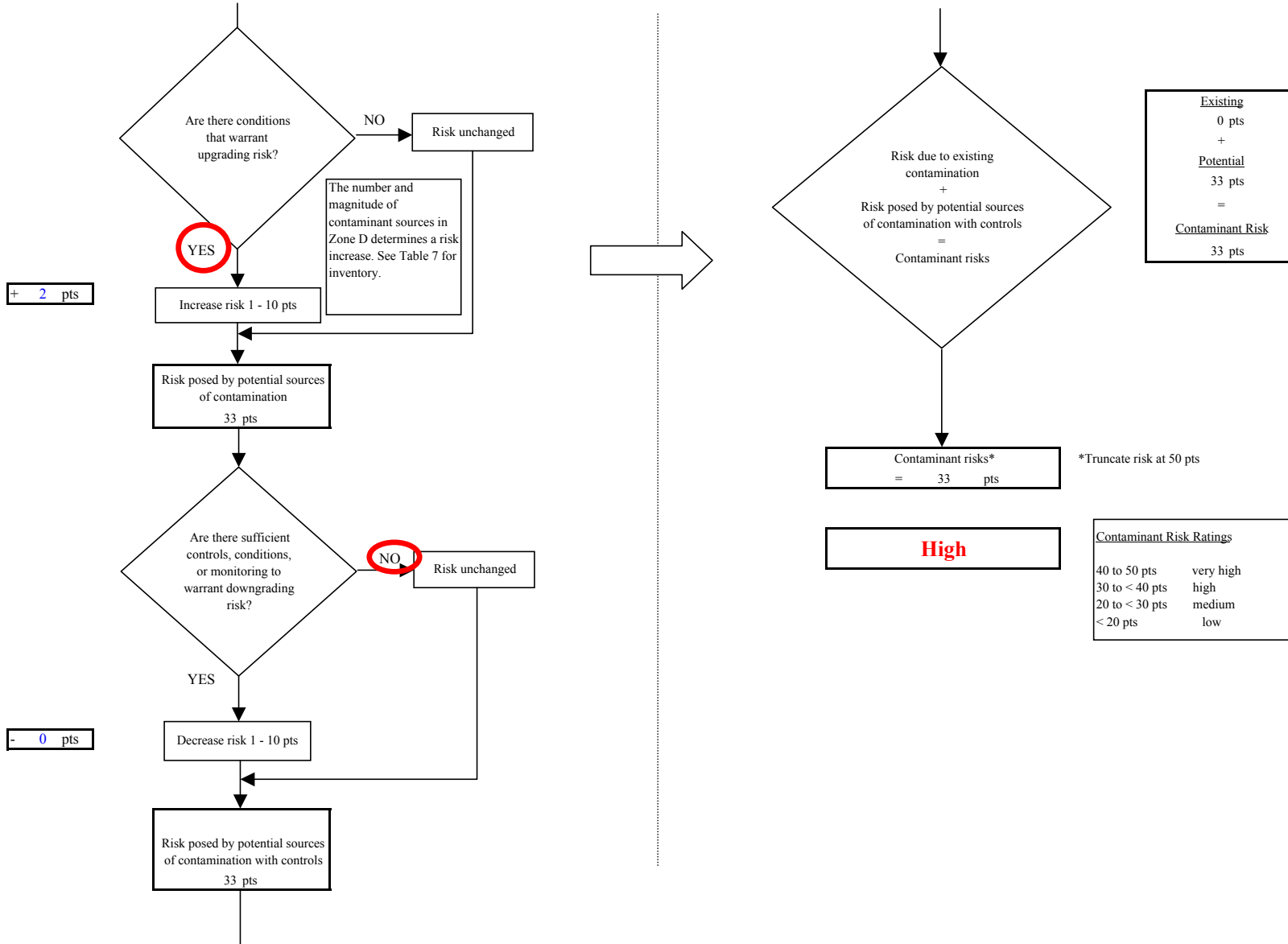


Chart 14. Vulnerability analysis for Lakeview Apartments Water System (PWS No.271172.001) - Other Organic Chemicals

