



Source Water Assessment

A Hydrogeologic Susceptibility and Vulnerability
Assessment for
Anchor Point Roadhouse
Drinking Water System,
Anchor Point, Alaska
PWSID # 241698
June 2003

DRINKING WATER PROTECTION PROGRAM REPORT # 610
Alaska Department of Environmental Conservation

Source Water Assessment for Anchor Point Roadhouse Drinking Water System, Anchor Point, Alaska PWSID # 241698

By Ecology & Environment, Inc.

DRINKING WATER PROTECTION PROGRAM REPORT # 610

The Drinking Water Protection Program (DWPP) is producing Source Water Assessments in compliance with the Safe Drinking Water Act Amendments of 1996. Each assessment includes a delineation of the source water area, an inventory of potential and existing contaminant sources that may impact the water, a risk ranking for each of these contaminants, and an evaluation of the potential vulnerability of these drinking water sources.

These assessments are intended to provide public water systems owners/operators, communities, and local governments with the best available information that may be used to protect the quality of their drinking water. The assessments combine information obtained from various sources, including the U.S. Environmental Protection Agency, Alaska Department of Environmental Conservation (ADEC), public water system owners/operators, and other public information sources. The results of this assessment are subject to change if additional data becomes available. It is anticipated this assessment will be updated every five years to reflect any changes in the vulnerability and/or susceptibility of public drinking water source. If you have any additional information that may affect the results of this assessment, please contact the Program Coordinator of DWPP, (907) 269-7521.

CONTENTS

Executive Summary	1
Introduction.....	1
Description of the Anchor Point Area	1
Anchor Point Roadhouse Public Drinking Water System	2
Anchor Point Roadhouse Drinking Water Protection Area.....	2
Inventory of Potential and Existing Contaminant Sources.....	2
Ranking of Contaminant Risks	3
Vulnerability of Anchor Point Roadhouse Drinking Water Source	3
References Cited.....	6

TABLES

Table 1. Definition of Zones.....	2
Table 2. Susceptibility	3
Table 3. Contaminant Risks.....	4
Table 4. Overall Vulnerability to Contamination by Category.....	4

APPENDICES

Appendix A. Anchor Point Roadhouse Drinking Water Protection Area (Map 1)	
Appendix B. Contaminant Source Inventory for Anchor Point Roadhouse (Table 1)	
Contaminant Source Inventory and Risk Ranking for Anchor Point Roadhouse– Bacteria and Viruses (Table 2)	
Contaminant Source Inventory and Risk Ranking for Anchor Point Roadhouse– Nitrates/Nitrites (Table 3)	
Contaminant Source Inventory and Risk Ranking for Anchor Point Roadhouse– Volatile Organic Chemicals (Table 4)	
Appendix C. Anchor Point Roadhouse Drinking Water Protection Area and Potential and Existing Contaminant Sources (Maps 2 and 3)	
Appendix D. Vulnerability Analysis for Contaminant Source Inventory and Risk Ranking for Anchor Point Roadhouse Public Drinking Water Source (Charts 1 – 8)	

Source Water Assessment for Anchor Point Roadhouse Source of Public Drinking Water, Anchor Point, Alaska

By Ecology & Environment, Inc.

Drinking Water Protection Program Alaska Department of Environmental Conservation

Executive Summary

Anchor Point Roadhouse is a Class B (transient/non-community) water system consisting of one well in Anchor Point, Alaska. The wellhead received a susceptibility rating of **Low** and the aquifer received a susceptibility rating of **Very High**. Combining these two ratings produces a **Medium** rating for the natural susceptibility of the well. Identified potential and current sources of contaminants for Anchor Point Roadhouse public drinking water source include: injection wells, septic systems, residential areas, roads, inactive logging areas, an aboveground fuel tank, a closed leaking underground storage tank and a DEC recognized contaminated site. These identified potential and existing sources of contamination are considered sources of bacteria and viruses, nitrates and/or nitrites, and volatile organic chemicals. Overall, the public water source for Anchor Point Roadhouse received a vulnerability rating of **High** for bacteria and viruses, **High** for nitrates and nitrites, and **High** for volatile organic chemicals.

Introduction

The Alaska Department of Environmental Conservation (ADEC) is completing source water assessments for all public drinking water sources in the State of Alaska. The purpose of this assessment is to provide owners and/or operators, communities, and local governments with information they can use to preserve the quality of Alaska's public drinking water supplies. The results of this source water assessment can be used to decide where voluntary protection efforts are needed and feasible, and also what efforts will be most effective in reducing contaminant risks to your water system. Ecology and Environment, Inc. has been contracted to perform these assessments under the supervision of ADEC.

This source water assessment combines a review of the natural conditions at the site and the potential and

existing contaminant risks. These are combined to determine the overall vulnerability of the drinking water source to contamination.

Description of the Anchor Point Area

Location

The Anchor Point area is located at mile 156 of the Sterling Highway near the confluence of the North and South forks of the Anchor River (see Inset of Map 1 of Appendix A).

Precipitation

The Anchor Point area averages about 25 inches of precipitation per year, with approximately 55 inches of snowfall (ACRC 2002).

Topography and Drainage

Anchor Point lies on the eastern side of Cook Inlet near the base of the low, rolling Caribou Hills. A number of small creeks provide drainage off the hills into the Anchor River. Boggy or marshy areas may complicate local drainage patterns.

Groundwater Use

Most residents have individual wells, septic tanks and complete indoor plumbing. A new well, water treatment plant and water distribution mains were recently installed. An expansion of the piped water system to the school, homes and businesses along the Sterling Highway is underway (ADCED 2002).

Geology and Soils

The vast majority of sediments exposed along the western side of the Kenai Peninsula are Quaternary sediments (Magoon, Adkison, and Egbert, 1976). These sediments are from former glacial streams,

abandoned-channel deposits, glacial moraines and deposits from existing streams (Glass, 1996). They generally consist of a combination of sand, gravel, silt, and clay. There can be significant variation in the composition of sediment layers over relatively small areas. As a consequence, aquifers in the area may be either confined or unconfined, depending on the local sequence of sediment layers (Glass, 1996). The Tertiary-aged Beluga Formation is exposed in Anchor Point, and comprises sandstone, siltstone and some coal (Magoon, Adkison, and Egbert, 1976).

Anchor Point Roadhouse Public Drinking Water System

Anchor Point Roadhouse is a Class B (transient/non-community) water system. The system consists of one well located at 34115 Sterling Highway.

The well was installed in August 1974 to a total depth of 57 feet without a sanitary seal. A properly installed sanitary seal may provide protection against contaminants from entering the source waters at the well casing. The site is properly drained and grouted. Proper grouting provides added protection against contaminants traveling along the well casing and into source waters. The well operates year-round and serves approximately 15 to 20 residents and 50 non-residents.

Anchor Point Roadhouse Drinking Water Protection Area

In order to evaluate whether a drinking water source is at risk, we must first evaluate what are the most likely pathways for surface contamination to reach the groundwater. Some areas are more likely to allow contamination to reach the well than others. These areas are determined by looking at the characteristics of the soil, groundwater, aquifer, and well.

The most probable area for contamination to reach the drinking water well is the area that contributes water to the well, the groundwater recharge area. This area is designated as the Drinking Water Protection Area (DWPA). Because a release of contaminants within the DWPA is most likely to impact the drinking water well, this area will serve as the focus for voluntary protection efforts.

An analytical calculation was used to determine the size and shape of the DWPA. The input parameters describing the attributes of this aquifer were derived from Freeze and Cherry (1979), Glass (1996), and from a review of well logs in the area found in the Alaska Department of Natural Resources and United States Geological Survey databases. Additional methods were also used to take into account any uncertainties in

groundwater flow and aquifer characteristics to arrive at a meaningful DWPA (Please refer to the Guidance Manual for Class B Water Systems for additional information).

The DWPA's established for wells by the ADEC are separated into four zones. These zones correspond to differences in the time-of-travel (TOT) of the water moving through the aquifer to the well. The time of travel for contaminants within the water varies and is dependent on the physical and chemical characteristics of each contaminant. The following is a summary of the four DWPA zones and the calculated time-of-travel for each:

Table 1. Definition of Zones

Zone	Definition
A	¼ the distance to the 2-year time-of-travel
B	Less than the 2-year time-of-travel
C	Less than the 5-year time-of-travel
D	Less than the 10 year time-of-travel

As an example, water moving through the aquifer in Zone B will most likely reach the well in less than 2 years from the time it crosses the outer limit of Zone B.

Zone A also incorporates the area downgradient from the well to take into account the area of the aquifer that is influenced by pumping of the well. Water within the aquifer in Zone A will reach the well in several hours to several months.

Inventory of Potential and Existing Contaminant Sources

The Drinking Water Protection Program has completed an inventory of potential and existing sources of contamination within the Anchor Point Roadhouse DWPA. This inventory was completed through a search of agency records and other publicly available information. Potential sources of contamination to the drinking water aquifer include a wide range of categories and types. Potential drinking water contaminants are found within agricultural, residential, commercial, and industrial areas, but can also occur within areas that have little or no development.

For the basis of all Class B water system assessments, three categories of drinking water contaminants were inventoried. They include:

- Bacteria and viruses;
- Nitrates and/or nitrites; and
- Volatile organic chemicals.

Inventoried potential sources of contamination within the drinking water protection area were associated with residential and light industrial type activities. The sources are displayed on Maps 2 and 3 of Appendix C and summarized in the tables in Appendix B.

Ranking of Contaminant Risks

Once the potential and existing sources of contamination have been identified, they are sorted and ranked according to what type and level of risk they represent. Ranking of contaminant risks for a “potential” or “existing” source of contamination is a function of toxicity and volumes of specific contaminants associated with that source. Further, contaminant risks are a function of the number and density of those types of contaminant sources as well as the proximity of those sources to the well. Rankings include:

- Low;
- Medium;
- High; and
- Very High.

The time-of-travel for contaminants within the water varies and is dependent on the physical and chemical characteristics of each contaminant. Bacteria and Viruses are only inventoried in Zones A and B because of their short life span. Only “Very High” and “High” rankings are inventoried within the outer Zone D due to the probability of contaminant dilution by the time the contaminants get to the well.

Tables 2 through 4 in Appendix B contain the ranking of potential and existing sources of contamination with respect to bacteria and viruses, nitrates and/or nitrites, and volatile organic chemicals.

Vulnerability of Anchor Point Roadhouse Drinking Water Source

Vulnerability of a drinking water source to contamination is a combination of two factors:

- Natural susceptibility; and
- Contaminant risks.

Appendix D contains eight charts, which together form the ‘Vulnerability Analysis’ for a source water assessment for a public drinking water source. Chart 1 analyzes the ‘Susceptibility of the Wellhead’ to contamination by looking at the construction of the well and its surrounding area. Chart 2 analyzes the ‘Susceptibility of the Aquifer’ to contamination by looking at the naturally occurring attributes of the water source and influences on the groundwater system that might lead to contamination. Chart 3 analyzes

‘Contaminant Risks’ for the drinking water source with respect to bacteria and viruses. The ‘Contaminant Risks’ portion of the analysis considers potential sources of contaminants as well as a review of contamination that has or may have occurred, but has not arrived or been detected at the well. Lastly, Chart 4 contains the ‘Vulnerability Analysis for Bacteria and Viruses’. Charts 5 through 8 contain the Contaminant Risks and Vulnerability Analyses for nitrates and nitrites and volatile organic chemicals, respectively.

A score for the Natural Susceptibility is achieved by analyzing the properties of the well and the aquifer.

Susceptibility of the Wellhead (0 – 25 Points)
(Chart 1 of Appendix D)

+

Susceptibility of the Aquifer (0 – 25 Points)
(Chart 2 of Appendix D)

=

Natural Susceptibility (Susceptibility of the Well)
(0 – 50 Points)

A ranking is assigned for the Natural Susceptibility according to the point score:

Natural Susceptibility Ratings	
40 to 50 pts	Very High
30 to < 40 pts	High
20 to < 30 pts	Medium
< 20 pts	Low

The well for Anchor Point Roadhouse is completed in an unconfined aquifer. Because unconfined aquifers are recharged by surface water and precipitation that migrates downward from the surface, contaminants at the surface have the potential to impact this aquifer adversely. Table 2 shows the Susceptibility scores and ratings for Anchor Point Roadhouse (see Charts 1 and 2).

Table 2. Susceptibility

	Score	Rating
Susceptibility of the Wellhead	0	Low
Susceptibility of the Aquifer	25	Very High
Natural Susceptibility	25	Medium

Contaminant risks to a drinking water source depend on the type, number or density, and distribution of contaminant sources. This score has been derived from

an examination of existing or historical contamination that has been detected at the drinking water source through routine sampling. It also evaluates potential sources of contamination. Flow charts are used to assign a point score, and ratings are assigned in the same way as for the natural susceptibility.

Contaminant Risk Ratings	
40 to 50 pts	Very High
30 to < 40 pts	High
20 to < 30 pts	Medium
< 20 pts	Low

Table 3 summarizes the Contaminant Risks for each category of drinking water contaminants (see Charts 3, 5, and 7).

Table 3. Contaminant Risks

Category	Score	Rating
Bacteria and Viruses	50	Very High
Nitrates and/or Nitrites	50	Very High
Volatile Organic Chemicals	50	Very High

Finally, an overall vulnerability score is assigned for each water system by combining each of the contaminant risk scores with the natural susceptibility score:

$$\begin{array}{r}
 \text{Natural Susceptibility (0 – 50 points)} \\
 + \\
 \text{Contaminant Risks (0 – 50 points)} \\
 = \\
 \text{Vulnerability of the} \\
 \text{Drinking Water Source to Contamination (0 – 100).}
 \end{array}$$

Again, rankings are assigned according to a point score:

Overall Vulnerability Ratings	
80 to 100 pts	Very High
60 to < 80 pts	High
40 to < 60 pts	Medium
< 40 pts	Low

Table 4 contains the overall vulnerability scores (0 – 100) and ratings for each of the three categories of drinking water contaminants. Note: scores are rounded off to the nearest five (see Charts 4, 6, and 8).

Table 4. Overall Vulnerability to Contamination by Category

Category	Score	Rating
Bacteria and Viruses	75	High
Nitrates and Nitrites	75	High
Volatile Organic Chemicals	75	High

Bacteria and Viruses

The contaminant risk for bacteria and viruses is Very High, with the septic system injection wells representing the greatest risk to the drinking water well (See Chart 3 – Contaminant Risks for Bacteria and Viruses in Appendix D).

After combining the contaminant risk for bacteria and viruses with the natural susceptibility of the well, the overall vulnerability of the well to contamination by bacteria and viruses is High.

Nitrates and Nitrites

The contaminant risk for nitrates and nitrites is Very High, with the septic system injection wells representing the highest risk to this source of public drinking water (See Chart 5 - Contaminant Risks for Nitrates and/or Nitrites in Appendix D). Nitrates are very mobile, moving at approximately the same rate as water.

The last five years’ sampling history for Anchor Point Roadhouse public water source indicates the most recent concentration detected was 1.800 mg/L on 12/27/01, which represents 18% of the Maximum Contaminant Level (MCL). While nitrates and nitrites can occur naturally in groundwater, a level of 20% of the MCL or more is considered to be due to manmade sources. Water with levels of nitrates and nitrites below 100% of the MCL is considered safe to drink by ADEC. After combining the contaminant risk for nitrates and nitrites with the natural susceptibility of the well, the overall vulnerability of the well to contamination by nitrates and nitrites is High.

Volatile Organic Chemicals

The contaminant risk for volatile organic chemicals is Very High, with the motor vehicle injection wells and a closed leaking underground storage tank site representing the highest risk for volatile organic chemicals (See Chart 7 – Contaminant Risks for Volatile Organic Chemicals in Appendix D).

Residents in the area typically heat their homes with various types of on-site fuel sources, including propane and heating oil stored in aboveground or underground storage tanks. Although this report does not address heating oil tanks (unless their location is known), they can pose a risk of volatile organic chemical

contamination to drinking water sources. The most common causes of fuel leaks of these heating oil systems are overfilling the tank, ruptured fuel lines, leaking storage tanks, damaged or faulty valves and vandalism. Secondary containment around the tank and regular system maintenance can help prevent many of these harmful fuel leaks and help protect the drinking water supply.

Class B water systems generally are not required to test for volatile organic chemicals. After combining the potential contaminant risk for volatile organic chemicals with the natural susceptibility of the well, the overall vulnerability of the well to contamination by volatile organic chemicals is High.

References Cited

Alaska Climate Research Center (ACRC), 2002, Alaskan Climatology Data [WWW document]. URL <http://climate.gi.alaska.edu/climatology/data.html>.

Alaska Department of Community and Economic Development (ADCED), 2002, Alaska Community Database [WWW database]. URL http://www.dced.state.ak.us/cbd/commdb/CF_BLOCK.cfm

Freeze, R.A. and Cherry, J.A., 1979, *Groundwater*, Upper Saddle River, NJ: Prentice Hall, Inc.

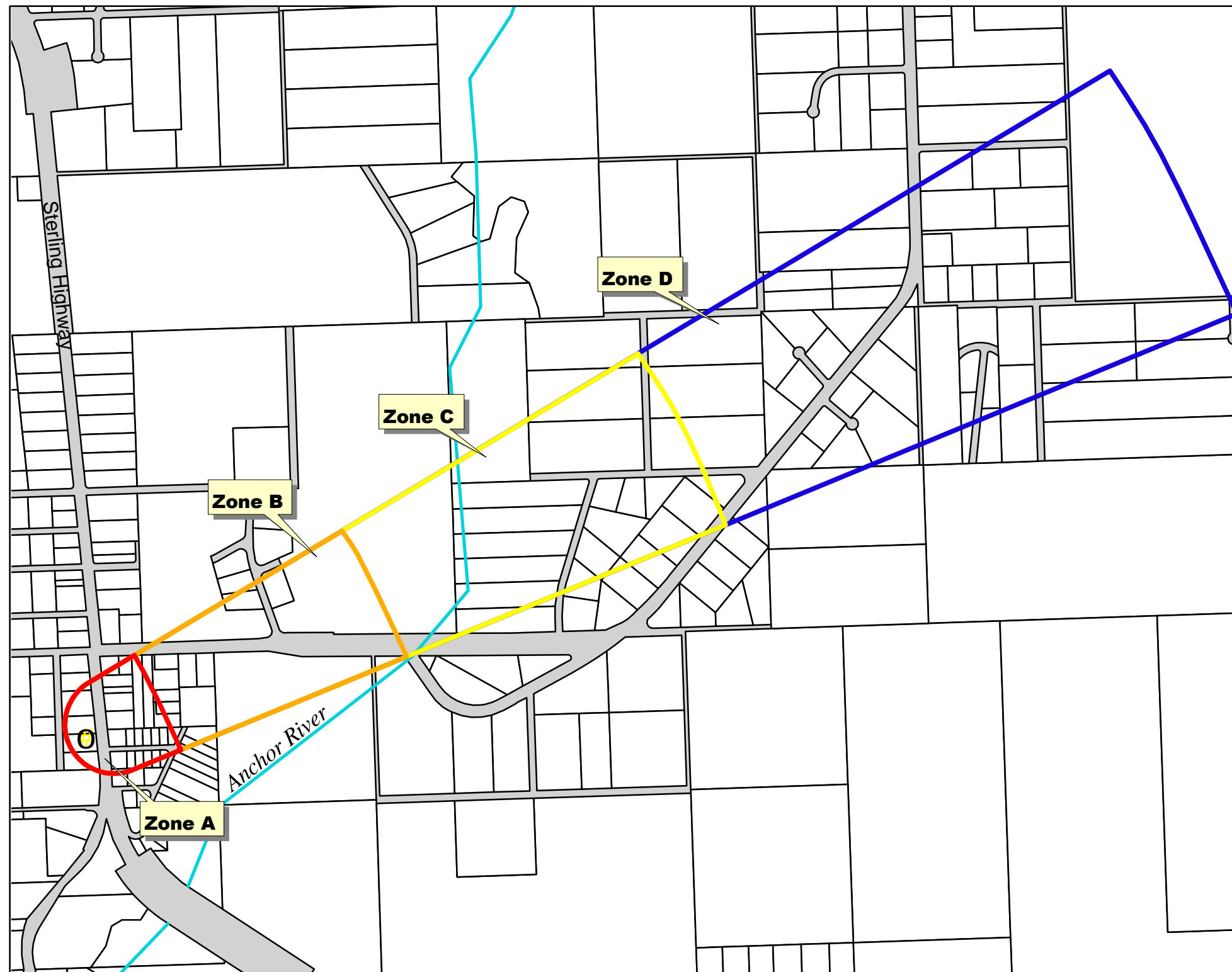
Glass, R.L., 1996, Ground-water conditions and quality in the western part of Kenai Peninsula, southcentral Alaska, Prepared in cooperation with the Alaska Department of Natural Resources, Kenai Peninsula Borough, Kenai Soil and Water Conservation District, U.S. Geological Survey, Anchorage, AK, and Branch of Information Services, Denver, CO.






Magoon, L. B., W.L. Adkison, and R. M. Egbert, 1976, *Map Showing Geology, Wildcat Wells, Tertiary Plant Fossil Localities, K-AR Age Dates, And Petroleum Operations, Cook Inlet Area, Alaska*, Department of the Interior, U.S. Geological Survey, Reston, VA.

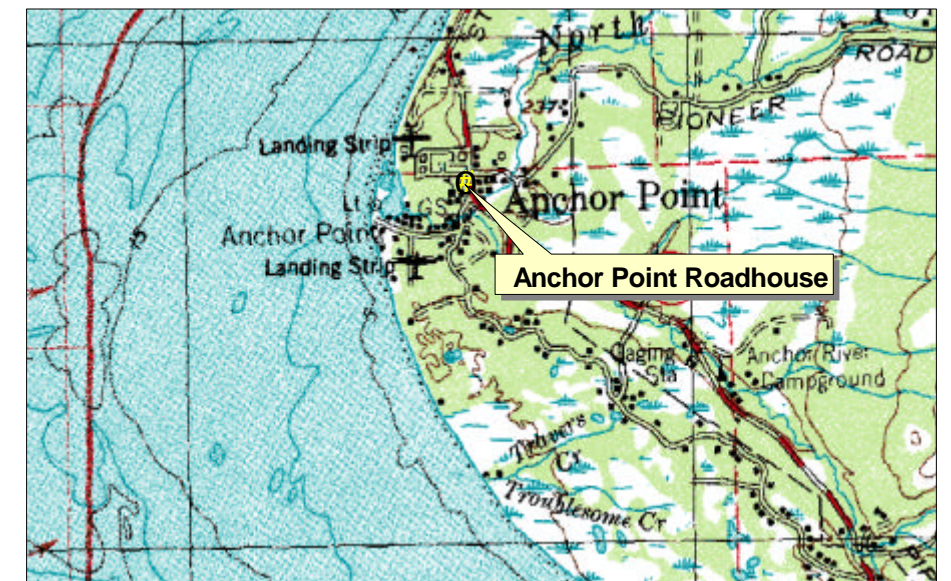
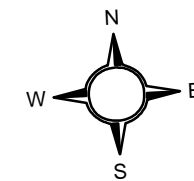
APPENDIX A

Anchor Point Roadhouse Drinking Water Protection Area (Map 1)

Drinking Water Protection Area for Anchor Point Roadhouse



-  Anchor Point Roadhouse Well
-  Zone A (Few Months Travel Time)
-  Zone B (Less Than 2 Years Travel Time)
-  Zone C (Less Than 5 Years Travel Time)
-  Zone D (Less Than 10 Years Travel Time)



PWSID 241698.001

Map 1

APPENDIX B

Contaminant Source Inventory and Risk Ranking for Anchor Point Roadhouse (Tables 1-4)

Table 1

**Contaminant Source Inventory for
Anchor Point Roadhouse**

PWSID 241698.001

Contaminant Source Type	Contaminant Source ID	CS ID tag	Zone	Location	Map Number	Comments
Injection wells (Class V) Large-Capacity Septic System (Drainfield Disposal Method)	D10	D10-1	A		2	
Injection wells (Class V) Large-Capacity Septic System (Drainfield Disposal Method)	D10	D10-2	A		2	
Injection wells (Class V) Large-Capacity Septic System (Drainfield Disposal Method)	D10	D10-3	A		2	
Injection wells (Class V) Large-Capacity Septic System (Drainfield Disposal Method)	D10	D10-4	A		2	
Injection wells (Class V) Large-Capacity Septic System (Drainfield Disposal Method)	D10	D10-5	A		2	
Injection wells (Class V) Large-Capacity Septic System (Drainfield Disposal Method)	D10	D10-6	A		2	
Injection wells (Class V) Large-Capacity Septic System (Drainfield Disposal Method)	D10	D10-7	A		2	
Injection wells (Class V) Motor Vehicle Waste Disposal Well	D42	D42-1	A		2	
Residential Areas	R01	R1-1	A		2	3.7 acres
Septic systems (serves one single-family home)	R02	R2-1	A		2	
Septic systems (serves one single-family home)	R02	R2-2	A		2	
Septic systems (serves one single-family home)	R02	R2-3	A		2	
Septic systems (serves one single-family home)	R02	R2-4	A		2	
Septic systems (serves one single-family home)	R02	R2-5	A		2	
Septic systems (serves one single-family home)	R02	R2-6	A		2	
Tanks, gasoline (above ground)	T10	T10-1	A	Anchor Point Texaco	2	
Closed Leaking Underground Fuel Storage Tank (LUST) Sites	U08	U8-1	A	Anchor Point Texaco	2	Anchor Point Texaco, RecKey 1986230012201. Subsurface gasoline spill of unknown quantity.
Highways and roads, paved (cement or asphalt)	X20	X20-1	A	Sterling Hwy	2	
Highways and roads, dirt/gravel	X24	X24-1	A		2	

<i>Contaminant Source Type</i>	<i>Contaminant Source ID</i>	<i>CS ID tag</i>	<i>Zone</i>	<i>Location</i>	<i>Map Number</i>	<i>Comments</i>
Highways and roads, dirt/gravel	X24	X24-2	A		2	
Logging (inactive)	E02	E2-1	B		3	
Residential Areas	R01	R1-2	B		2	21.2 acres
Septic systems (serves one single-family home)	R02	R2-7--12	B		3	
Contaminated sites, DEC recognized, non-Superfund, non-RCRA	U04	U4-1	B	Craigs Anchor Point Garage	2	Craigs Anchor Point Garage, RecKey 19862300118202. Contaminants include oil, grease, gasoline, antifreeze and sewage.
Highways and roads, dirt/gravel	X24	X24-3	B	Bailey Dr	3	
Highways and roads, dirt/gravel	X24	X24-4	B	Hill St	3	
Residential Areas	R01	R1-3	C		2	49 acres
Septic systems (serves one single-family home)	R02	R2-13--19	C		3	
Highways and roads, dirt/gravel	X24	X24-5	C	Spruce Gate Rd	3	
Highways and roads, dirt/gravel	X24	X24-6	C	Ester Ave	3	
Highways and roads, dirt/gravel	X24	X24-7	C		3	
Highways and roads, dirt/gravel	X24	X24-8	C		3	

Table 2

*Contaminant Source Inventory and Risk Ranking for
Anchor Point Roadhouse
Sources of Bacteria and Viruses*

PWSID 241698.001

<i>Contaminant Source Type</i>	<i>Contaminant Source ID</i>	<i>CS ID tag</i>	<i>Zone</i>	<i>Risk Ranking for Analysis</i>	<i>Location</i>	<i>Map Number</i>	<i>Comments</i>
Injection wells (Class V) Large-Capacity Septic System (Drainfield Disposal Method)	D10	D10-1	A	High		2	
Injection wells (Class V) Large-Capacity Septic System (Drainfield Disposal Method)	D10	D10-2	A	High		2	
Injection wells (Class V) Large-Capacity Septic System (Drainfield Disposal Method)	D10	D10-3	A	High		2	
Injection wells (Class V) Large-Capacity Septic System (Drainfield Disposal Method)	D10	D10-4	A	High		2	
Injection wells (Class V) Large-Capacity Septic System (Drainfield Disposal Method)	D10	D10-5	A	High		2	
Injection wells (Class V) Large-Capacity Septic System (Drainfield Disposal Method)	D10	D10-6	A	High		2	
Injection wells (Class V) Large-Capacity Septic System (Drainfield Disposal Method)	D10	D10-7	A	High		2	
Injection wells (Class V) Motor Vehicle Waste Disposal Well	D42	D42-1	A	Low		2	
Residential Areas	R01	R1-1	A	Low		2	3.7 acres
Septic systems (serves one single-family home)	R02	R2-1	A	Low		2	
Septic systems (serves one single-family home)	R02	R2-2	A	Low		2	
Septic systems (serves one single-family home)	R02	R2-3	A	Low		2	
Septic systems (serves one single-family home)	R02	R2-4	A	Low		2	
Septic systems (serves one single-family home)	R02	R2-5	A	Low		2	
Septic systems (serves one single-family home)	R02	R2-6	A	Low		2	
Closed Leaking Underground Fuel Storage Tank (LUST) Sites	U08	U8-1	A	Low	Anchor Point Texaco	2	Anchor Point Texaco, RecKey 1986230012201. Subsurface gasoline spill of unknown quantity.
Highways and roads, paved (cement or asphalt)	X20	X20-1	A	Low	Sterling Hwy	2	
Highways and roads, dirt/gravel	X24	X24-1	A	Low		2	
Highways and roads, dirt/gravel	X24	X24-2	A	Low		2	

Table 2 (continued)

Contaminant Source Inventory and Risk Ranking for
Anchor Point Roadhouse
Sources of Bacteria and Viruses

PWSID 241698.001

<i>Contaminant Source Type</i>	<i>Contaminant Source ID</i>	<i>CS ID tag</i>	<i>Zone</i>	<i>Risk Ranking for Analysis</i>	<i>Location</i>	<i>Map Number</i>	<i>Comments</i>
Residential Areas	R01	R1-2	B	Low		2	21.2 acres
Septic systems (serves one single-family home)	R02	R2-7--12	B	Low		3	
Contaminated sites, DEC recognized, non-Superfund, non-RCRA	U04	U4-1	B	Low	Craigs Anchor Point Garage	2	Craigs Anchor Point Garage, RecKey 19862300118202. Contaminants include oil, grease, gasoline, antifreeze and sewage.
Highways and roads, dirt/gravel	X24	X24-3	B	Low	Bailey Dr	3	
Highways and roads, dirt/gravel	X24	X24-4	B	Low	Hill St	3	

Table 3

*Contaminant Source Inventory and Risk Ranking for
Anchor Point Roadhouse
Sources of Nitrates/Nitrites*

PWSID 241698.001

<i>Contaminant Source Type</i>	<i>Contaminant Source ID</i>	<i>CS ID tag</i>	<i>Zone</i>	<i>Risk Ranking for Analysis</i>	<i>Location</i>	<i>Map Number</i>	<i>Comments</i>
Injection wells (Class V) Large-Capacity Septic System (Drainfield Disposal Method)	D10	D10-1	A	High		2	
Injection wells (Class V) Large-Capacity Septic System (Drainfield Disposal Method)	D10	D10-2	A	High		2	
Injection wells (Class V) Large-Capacity Septic System (Drainfield Disposal Method)	D10	D10-3	A	High		2	
Injection wells (Class V) Large-Capacity Septic System (Drainfield Disposal Method)	D10	D10-4	A	High		2	
Injection wells (Class V) Large-Capacity Septic System (Drainfield Disposal Method)	D10	D10-5	A	High		2	
Injection wells (Class V) Large-Capacity Septic System (Drainfield Disposal Method)	D10	D10-6	A	High		2	
Injection wells (Class V) Large-Capacity Septic System (Drainfield Disposal Method)	D10	D10-7	A	High		2	
Residential Areas	R01	R1-1	A	Low		2	3.7 acres
Septic systems (serves one single-family home)	R02	R2-1	A	Low		2	
Septic systems (serves one single-family home)	R02	R2-2	A	Low		2	
Septic systems (serves one single-family home)	R02	R2-3	A	Low		2	
Septic systems (serves one single-family home)	R02	R2-4	A	Low		2	
Septic systems (serves one single-family home)	R02	R2-5	A	Low		2	
Septic systems (serves one single-family home)	R02	R2-6	A	Low		2	
Closed Leaking Underground Fuel Storage Tank (LUST) Sites	U08	U8-1	A	Low	Anchor Point Texaco	2	Anchor Point Texaco, RecKey 1986230012201. Subsurface gasoline spill of unknown quantity.
Highways and roads, paved (cement or asphalt)	X20	X20-1	A	Low	Sterling Hwy	2	
Highways and roads, dirt/gravel	X24	X24-1	A	Low		2	
Highways and roads, dirt/gravel	X24	X24-2	A	Low		2	
Logging (inactive)	E02	E2-1	B	Low		3	
Residential Areas	R01	R1-2	B	Low		2	21.2 acres

Table 3 (continued)

*Contaminant Source Inventory and Risk Ranking for
Anchor Point Roadhouse
Sources of Nitrates/Nitrites*

PWSID 241698.001

<i>Contaminant Source Type</i>	<i>Contaminant Source ID</i>	<i>CS ID tag</i>	<i>Zone</i>	<i>Risk Ranking for Analysis</i>	<i>Location</i>	<i>Map Number</i>	<i>Comments</i>
Septic systems (serves one single-family home)	R02	R2-7--12	B	Low		3	
Contaminated sites, DEC recognized, non-Superfund, non-RCRA	U04	U4-1	B	Low	Craigs Anchor Point Garage	2	Craigs Anchor Point Garage, RecKey 19862300118202. Contaminants include oil, grease, gasoline, antifreeze and sewage.
Highways and roads, dirt/gravel	X24	X24-3	B	Low	Bailey Dr	3	
Highways and roads, dirt/gravel	X24	X24-4	B	Low	Hill St	3	
Residential Areas	R01	R1-3	C	Low		2	49 acres
Septic systems (serves one single-family home)	R02	R2-13--19	C	Low		3	
Highways and roads, dirt/gravel	X24	X24-5	C	Low	Spruce Gate Rd	3	
Highways and roads, dirt/gravel	X24	X24-6	C	Low	Ester Ave	3	
Highways and roads, dirt/gravel	X24	X24-7	C	Low		3	
Highways and roads, dirt/gravel	X24	X24-8	C	Low		3	

Table 4

*Contaminant Source Inventory and Risk Ranking for
Anchor Point Roadhouse
Sources of Volatile Organic Chemicals*

PWSID 241698.001

<i>Contaminant Source Type</i>	<i>Contaminant Source ID</i>	<i>CS ID tag</i>	<i>Zone</i>	<i>Risk Ranking for Analysis</i>	<i>Location</i>	<i>Map Number</i>	<i>Comments</i>
Injection wells (Class V) Large-Capacity Septic System (Drainfield Disposal Method)	D10	D10-1	A	Low		2	
Injection wells (Class V) Large-Capacity Septic System (Drainfield Disposal Method)	D10	D10-2	A	Low		2	
Injection wells (Class V) Large-Capacity Septic System (Drainfield Disposal Method)	D10	D10-3	A	Low		2	
Injection wells (Class V) Large-Capacity Septic System (Drainfield Disposal Method)	D10	D10-4	A	Low		2	
Injection wells (Class V) Large-Capacity Septic System (Drainfield Disposal Method)	D10	D10-5	A	Low		2	
Injection wells (Class V) Large-Capacity Septic System (Drainfield Disposal Method)	D10	D10-6	A	Low		2	
Injection wells (Class V) Large-Capacity Septic System (Drainfield Disposal Method)	D10	D10-7	A	Low		2	
Injection wells (Class V) Motor Vehicle Waste Disposal Well	D42	D42-1	A	High		2	
Residential Areas	R01	R1-1	A	Low		2	3.7 acres
Septic systems (serves one single-family home)	R02	R2-1	A	Low		2	
Septic systems (serves one single-family home)	R02	R2-2	A	Low		2	
Septic systems (serves one single-family home)	R02	R2-3	A	Low		2	
Septic systems (serves one single-family home)	R02	R2-4	A	Low		2	
Septic systems (serves one single-family home)	R02	R2-5	A	Low		2	
Septic systems (serves one single-family home)	R02	R2-6	A	Low		2	
Tanks, gasoline (above ground)	T10	T10-1	A	Medium	Anchor Point Texaco	2	
Closed Leaking Underground Fuel Storage Tank (LUST) Sites	U08	U8-1	A	High	Anchor Point Texaco	2	Anchor Point Texaco, RecKey 1986230012201. Subsurface gasoline spill of unknown quantity.
Highways and roads, paved (cement or asphalt)	X20	X20-1	A	Low	Sterling Hwy	2	
Highways and roads, dirt/gravel	X24	X24-1	A	Low		2	

Table 4 (continued)

*Contaminant Source Inventory and Risk Ranking for
Anchor Point Roadhouse
Sources of Volatile Organic Chemicals*

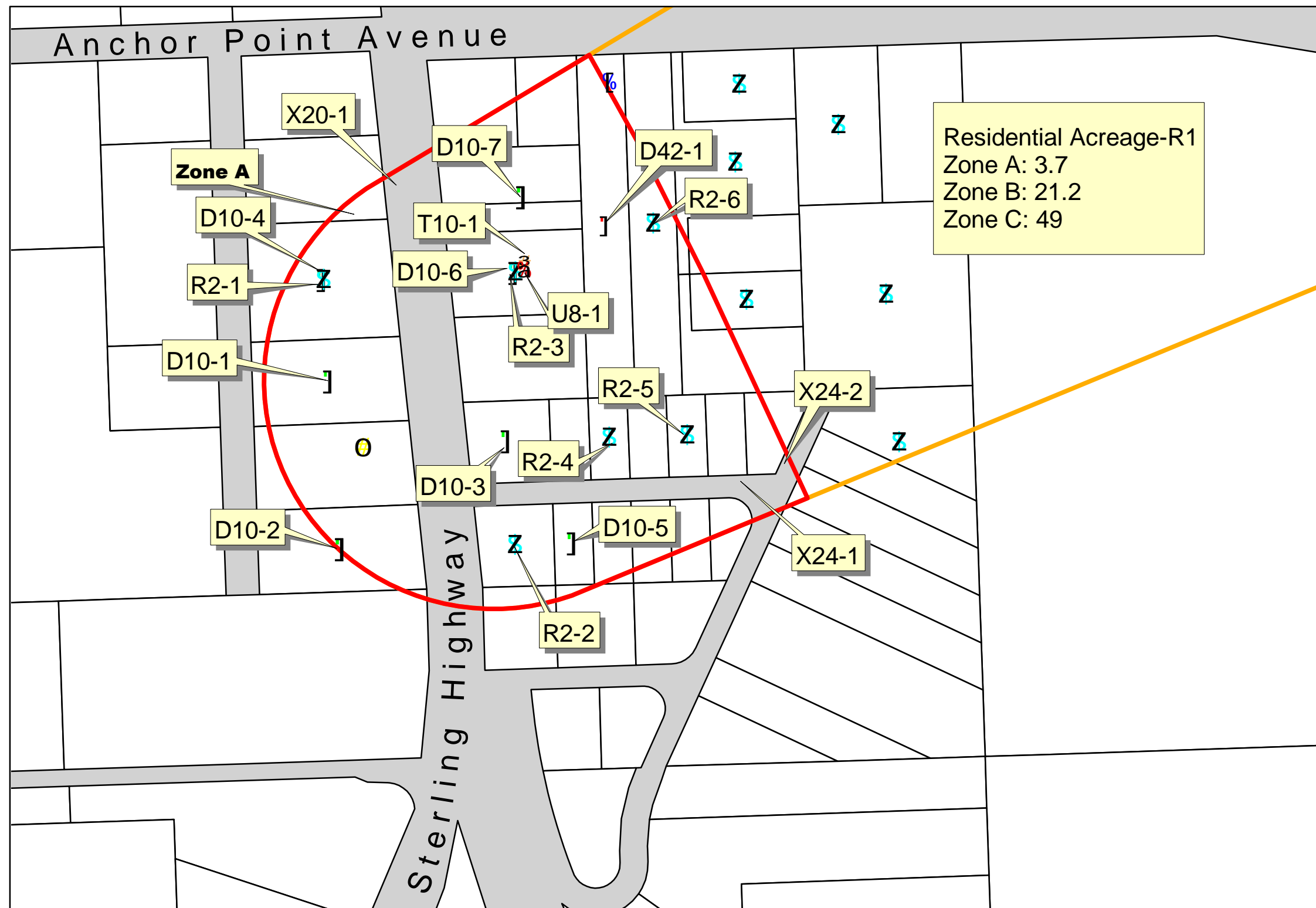
PWSID 241698.001

<i>Contaminant Source Type</i>	<i>Contaminant Source ID</i>	<i>CS ID tag</i>	<i>Zone</i>	<i>Risk Ranking for Analysis</i>	<i>Location</i>	<i>Map Number</i>	<i>Comments</i>
Highways and roads, dirt/gravel	X24	X24-2	A	Low		2	
Logging (inactive)	E02	E2-1	B	Low		3	
Residential Areas	R01	R1-2	B	Low		2	21.2 acres
Septic systems (serves one single-family home)	R02	R2-7--12	B	Low		3	
Contaminated sites, DEC recognized, non-Superfund, non-RCRA	U04	U4-1	B	Medium	Craigs Anchor Point Garage	2	Craigs Anchor Point Garage, RecKey 19862300118202. Contaminants include oil, grease, gasoline, antifreeze and sewage.
Highways and roads, dirt/gravel	X24	X24-3	B	Low	Bailey Dr	3	
Highways and roads, dirt/gravel	X24	X24-4	B	Low	Hill St	3	
Residential Areas	R01	R1-3	C	Low		2	49 acres
Septic systems (serves one single-family home)	R02	R2-13--19	C	Low		3	
Highways and roads, dirt/gravel	X24	X24-5	C	Low	Spruce Gate Rd	3	
Highways and roads, dirt/gravel	X24	X24-6	C	Low	Ester Ave	3	
Highways and roads, dirt/gravel	X24	X24-7	C	Low		3	
Highways and roads, dirt/gravel	X24	X24-8	C	Low		3	

APPENDIX C

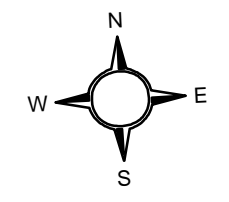
Anchor Point Roadhouse Drinking Water Protection Area and Potential and Existing Contaminant Sources (Maps 2 and 3)

Drinking Water Protection Area for Anchor Point Roadhouse and Existing and Potential Sources of Contamination



- Anchor Point Roadhouse Well
- Tanks, gasoline, (underground)-T12
- Open Leaking Underground Fuel Storage Tank (LUST), - U8
- Contaminated Sites. DEC Recognized, non- Superfund, non-RCRA-U04
- Injection wells (Class V) Motor Vehicle Waste Disposal Well-D42
- Injection wells (Class V) Large Capacity Septic System-D10
- Septic systems (serves one single-family home and/or less than 20 people)-R2
- Zone A (Few Months Travel Time)
- Zone B (Less Than 2 Years Travel Time)

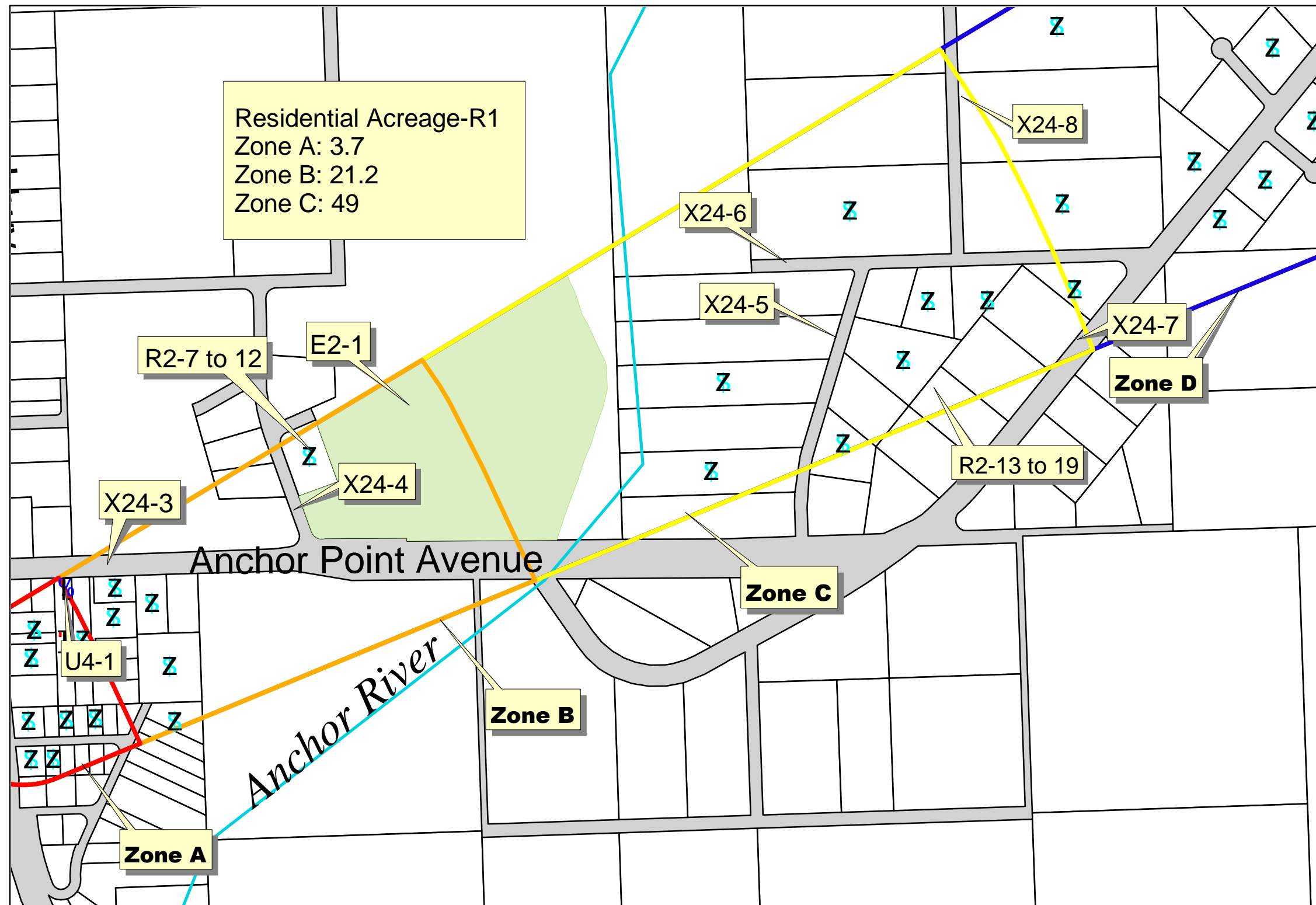
Residential Acreage-R1
 Zone A: 3.7
 Zone B: 21.2
 Zone C: 49



PWSID 241698.001

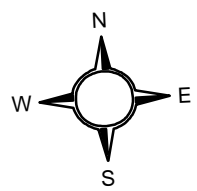
Map 2

Drinking Water Protection Area for Anchor Point Roadhouse and Existing and Potential Sources of Contamination



Residential Acreage-R1
 Zone A: 3.7
 Zone B: 21.2
 Zone C: 49

- Anchor Point Roadhouse Well
- Contaminated Sites, ADEC Recognized, non-Superfund, non-RCRA- U4
- Septic Systems-R2
- Logging Areas-E2
- Zone A (Few Months Travel Time)
- Zone B (Less Than 2 Years Travel Time)
- Zone C (Less Than 5 Years Travel Time)
- Zone D (Less Than 10 Years Travel Time)



APPENDIX D

Vulnerability Analysis for Anchor Point Roadhouse Public Drinking Water Source (Charts 1-8)

Chart 1. Susceptibility of the wellhead - Anchor Point Roadhouse

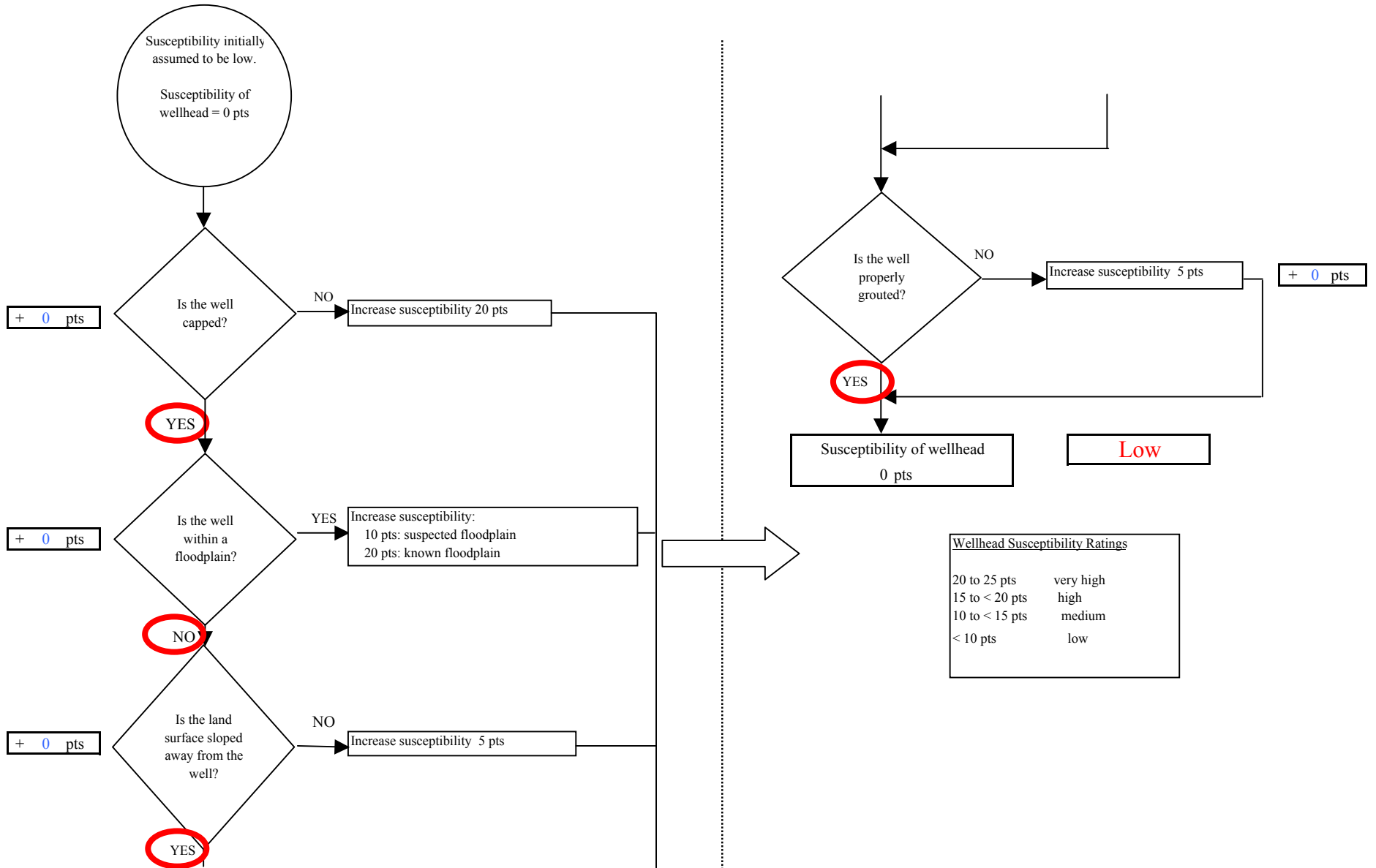


Chart 2. Susceptibility of the aquifer - Anchor Point Roadhouse

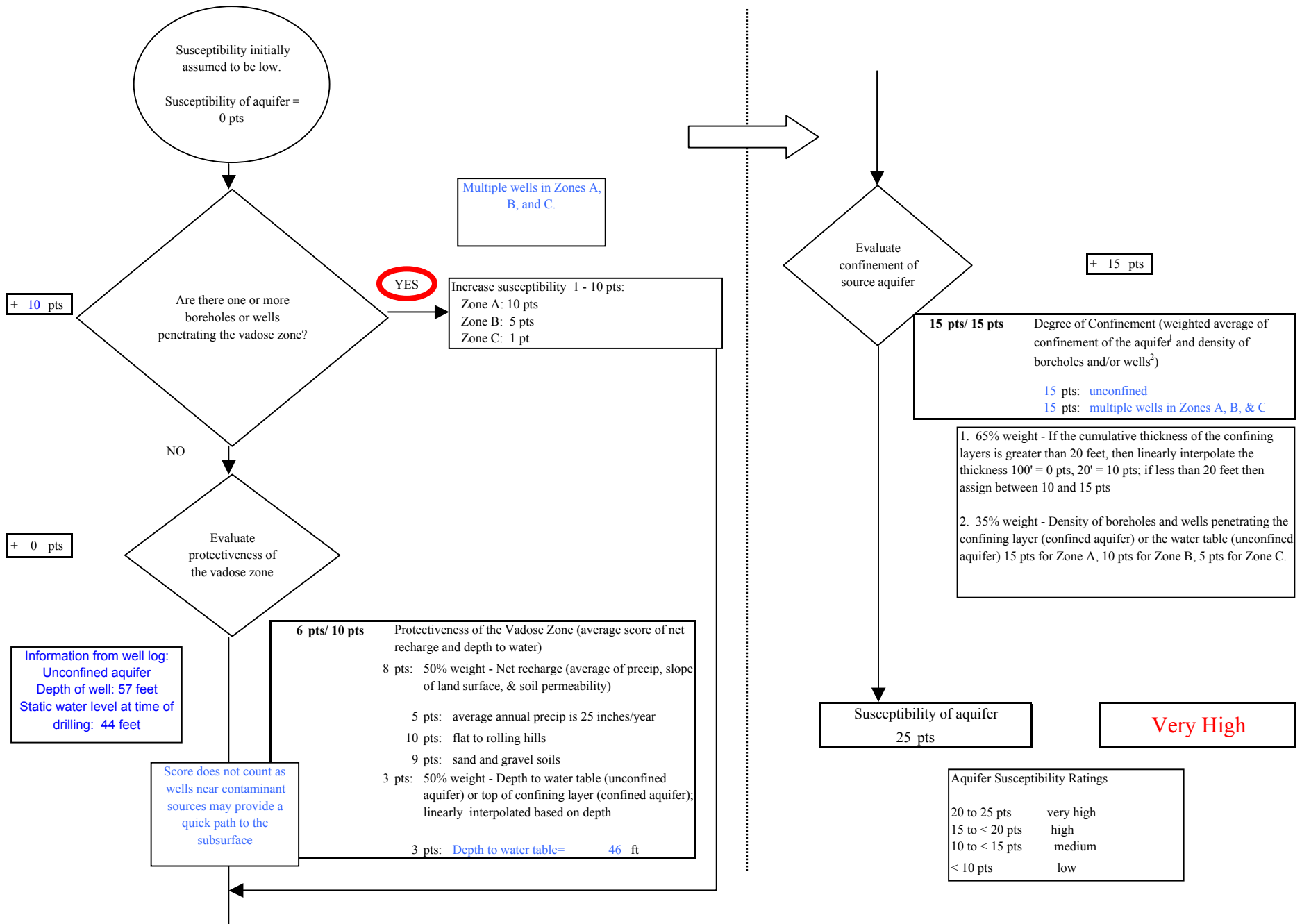
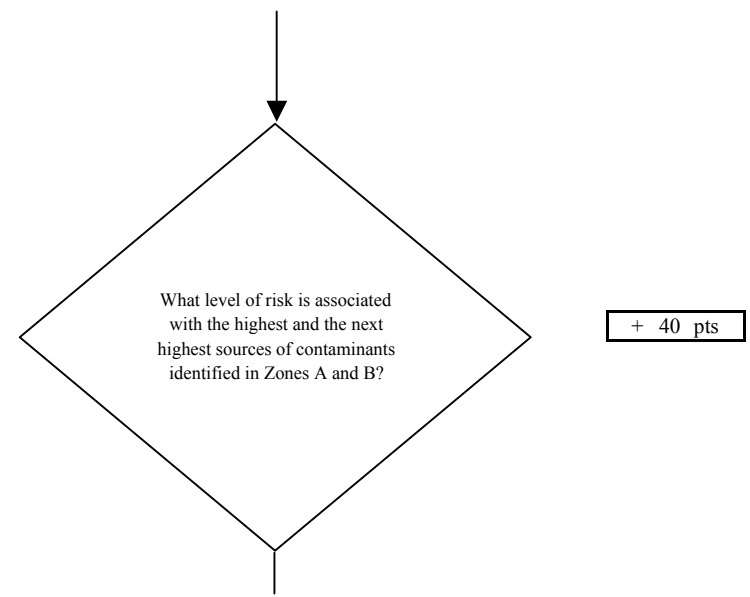
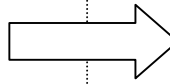
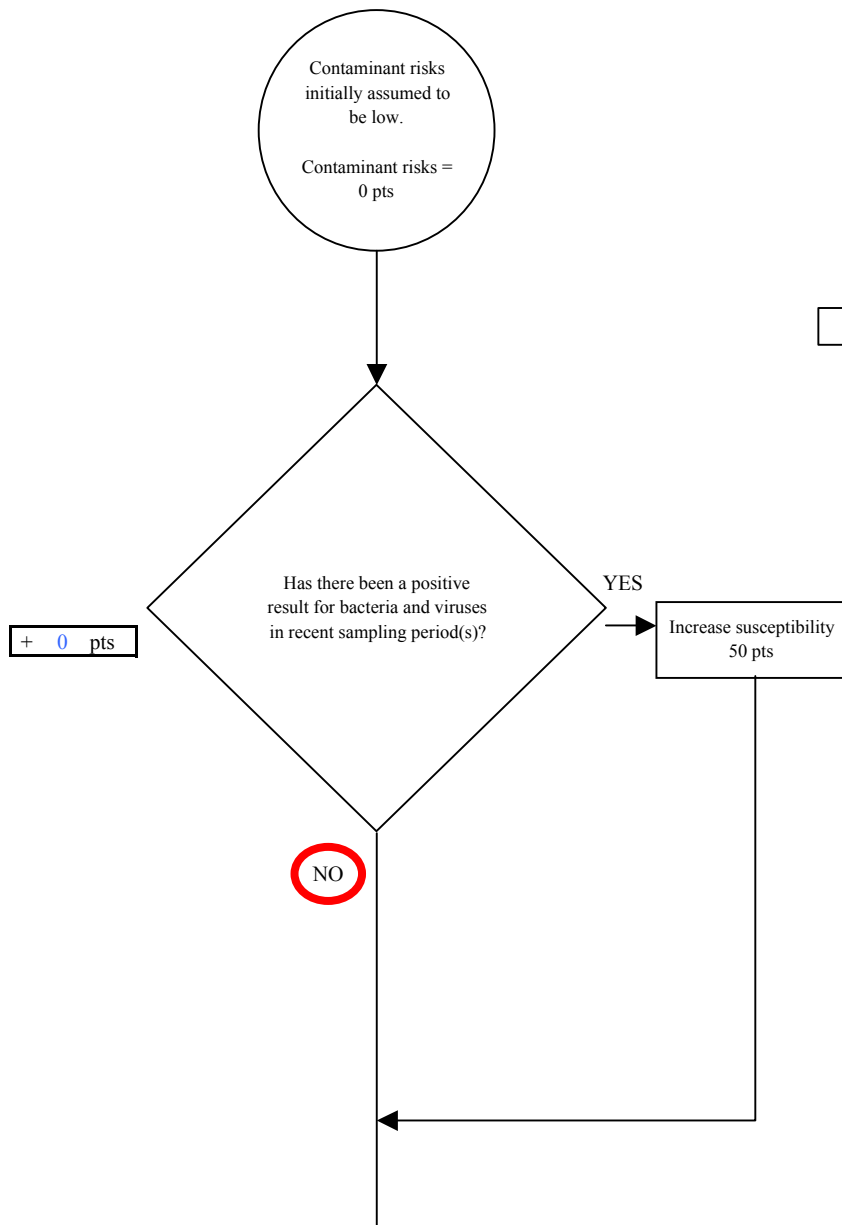


Chart 3. Contaminant risks for *Anchor Point Roadhouse - Bacteria & Viruses*



Risk Rankings for Contaminant Sources Identified in Zones A and B

	Zone A	Zone B	Total
Very Highs(s)	0	0	0
High(s)	7	0	7
Medium(s)	0	0	0
Low(s)	10	4	14

	LOW 10 pts	MEDIUM 20 pts	HIGH 30 pts	VERY HIGH 40 pts
LOW	≥ 10 sources + 10 pts	≥ 10 sources + 5 pts	≥ 20 sources + 5 pts	---
MEDIUM	---	≥ 2 sources + 5 pts	≥ 5 sources + 5 pts	≥ 10 sources + 5 pts
HIGH	---	---	≥ 1 source + 10 pts	≥ 2 sources + 10 pts
VERY HIGH	---	---	---	≥ 1 source + 10 pts

Matrix Score 40

Note: Septic systems, sewerlines, and roads are each assigned a risk ranking for each individual contaminant source in the CSI. The VA, however, counts these contaminant sources as a group and assigns a calculated number of either "lows" or "mediums" based on the density.

Chart 3. Contaminant risks for Anchor Point Roadhouse - Bacteria & Viruses

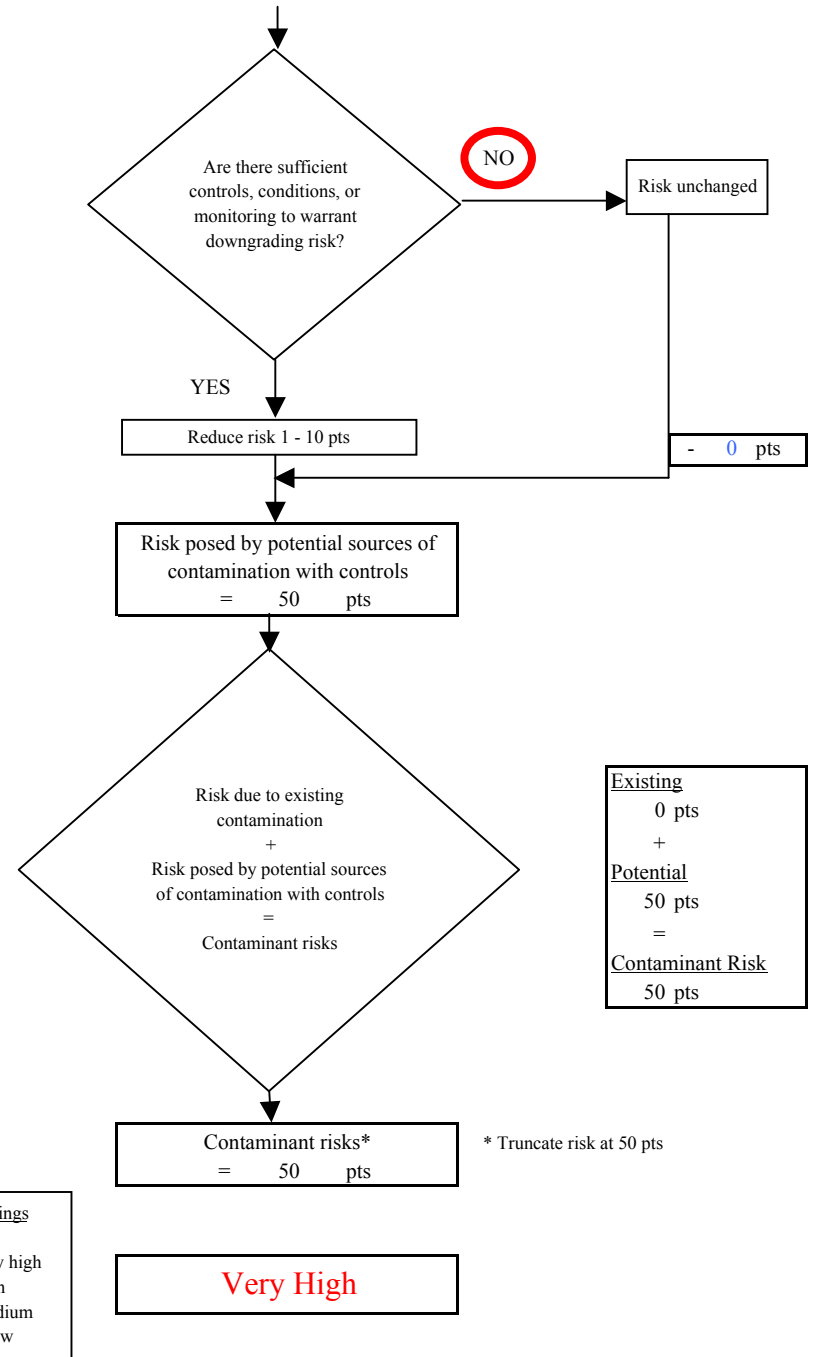
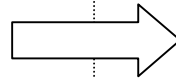
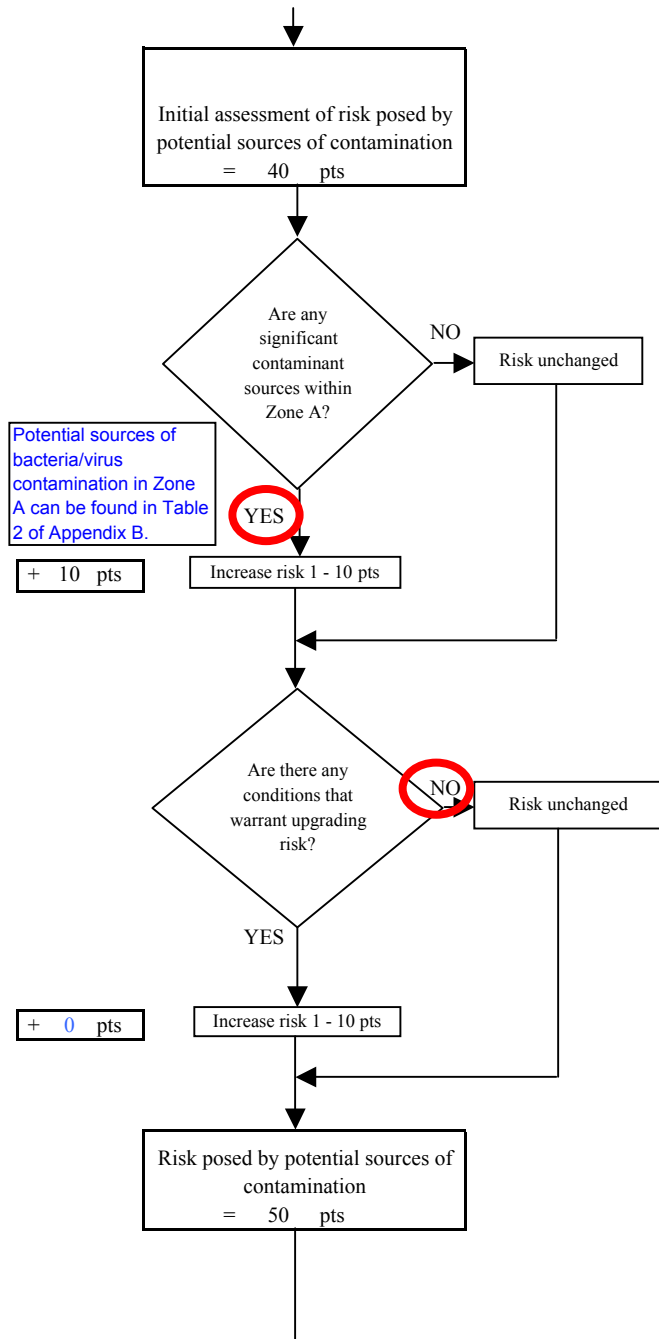


Chart 4. Vulnerability analysis for Anchor Point Roadhouse - Bacteria & Viruses

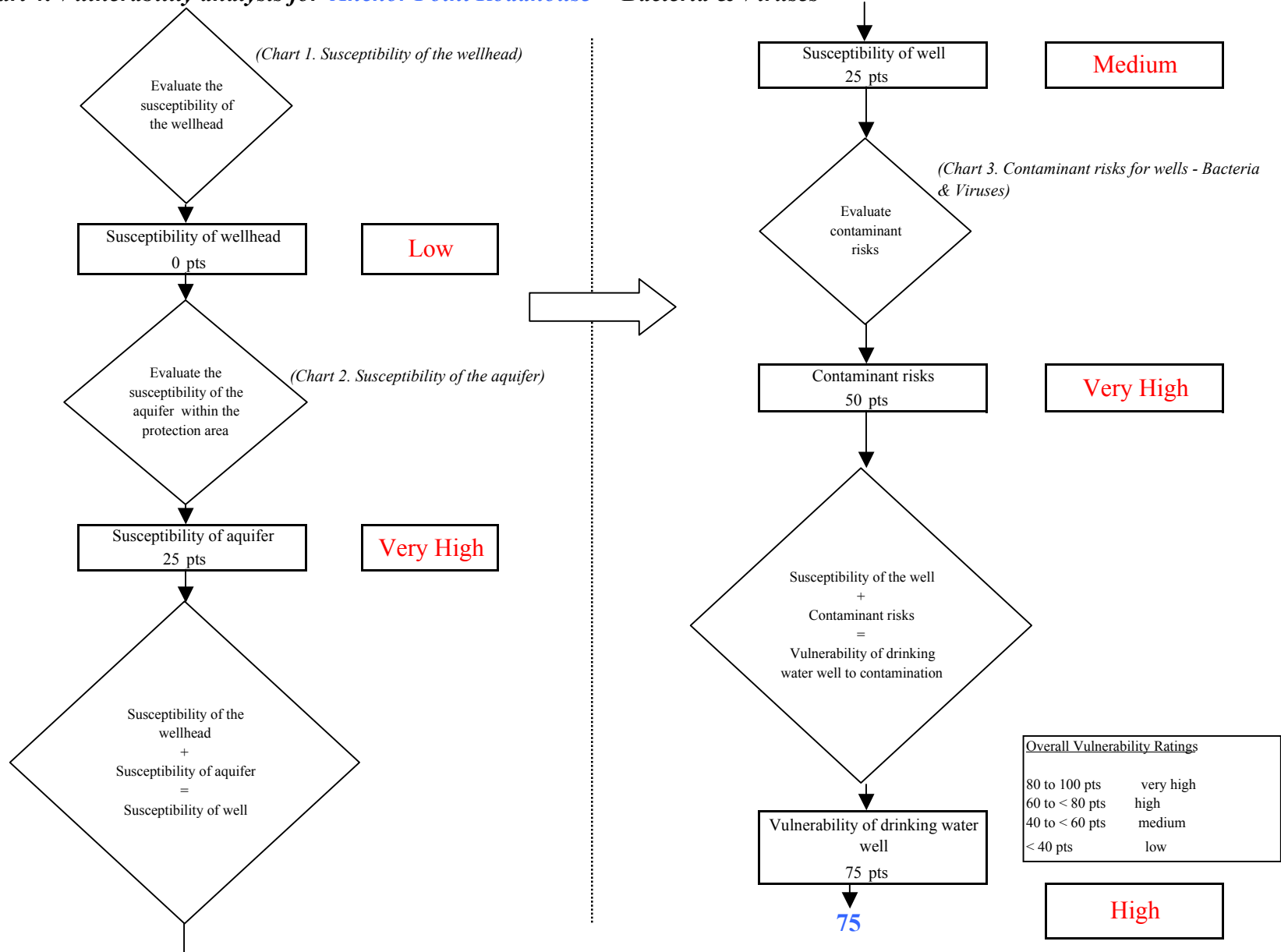


Chart 5. Contaminant risks for Anchor Point Roadhouse - Nitrates and Nitrites

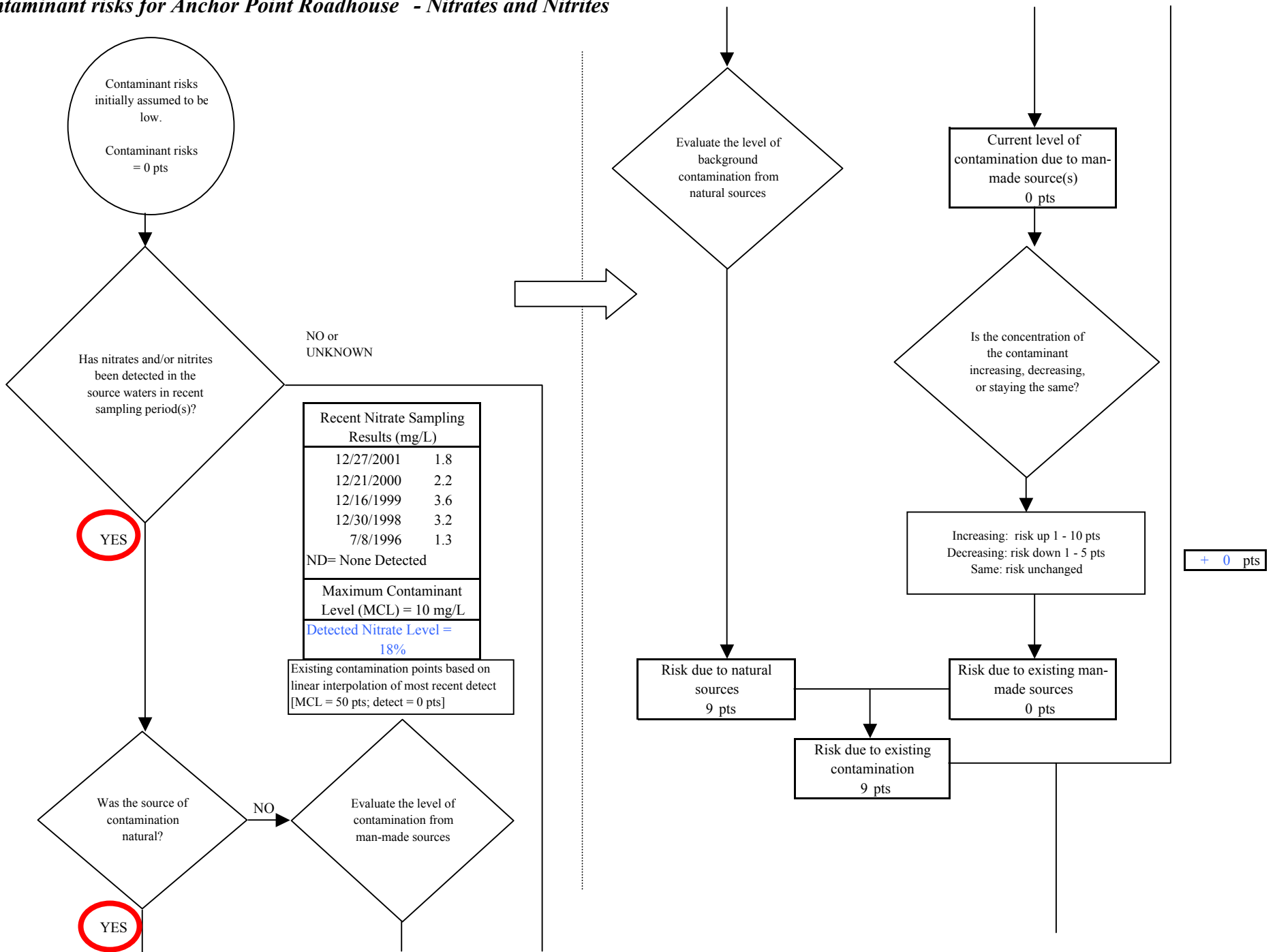
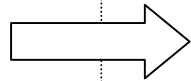
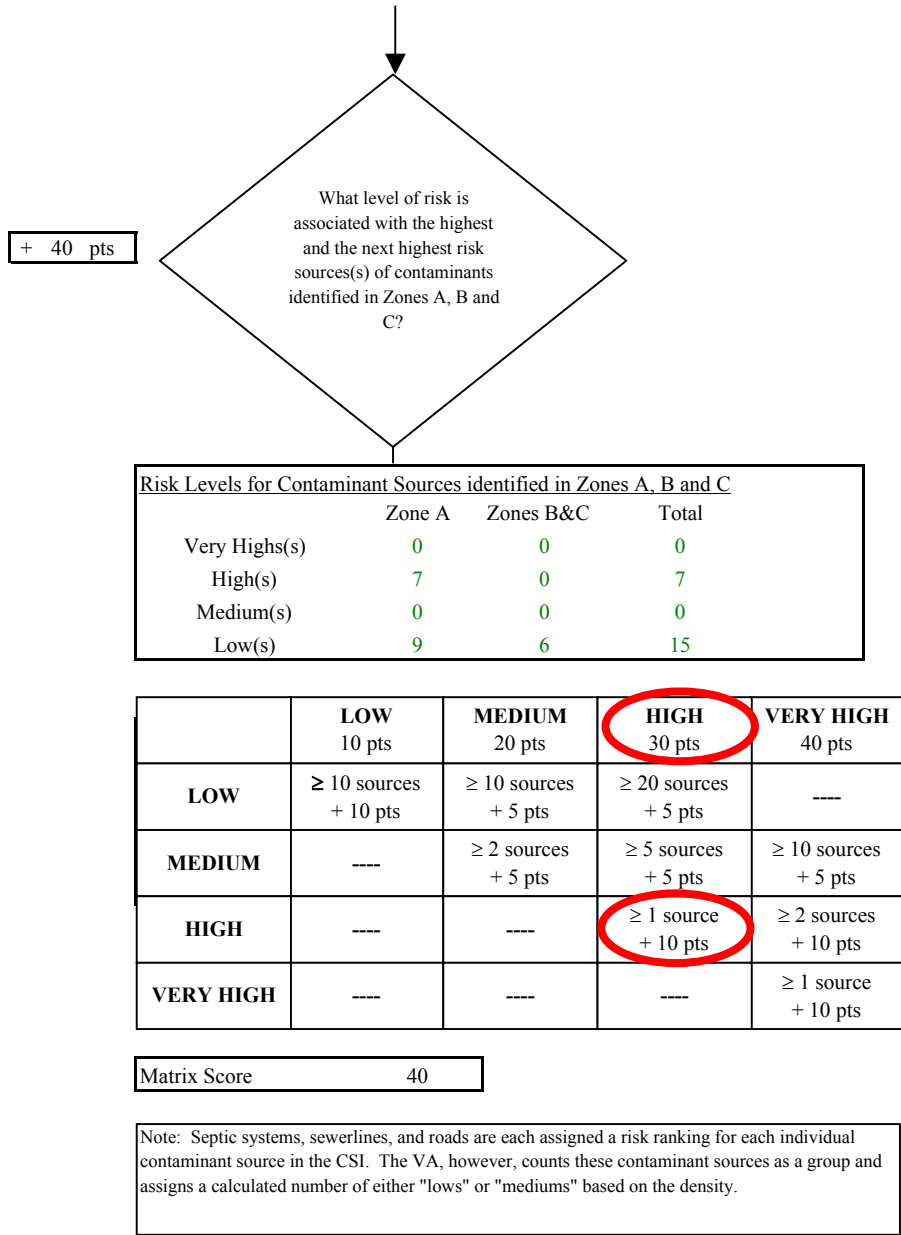


Chart 5. Contaminant risks for Anchor Point Roadhouse - Nitrates and Nitrites



Potential sources of nitrate/nitrite contamination in Zone A can be found in Table 3 of Appendix B.

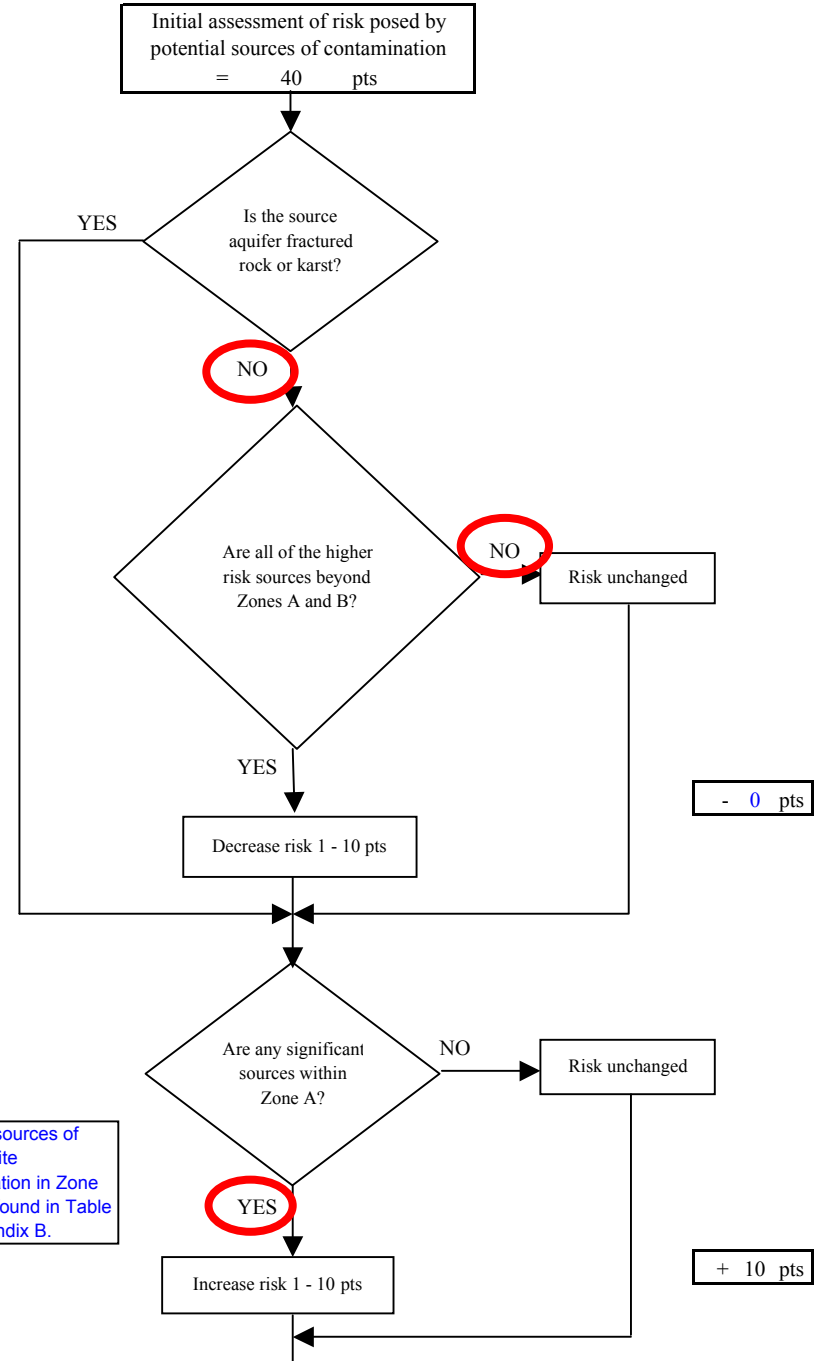


Chart 5. Contaminant risks for Anchor Point Roadhouse - Nitrates and Nitrites

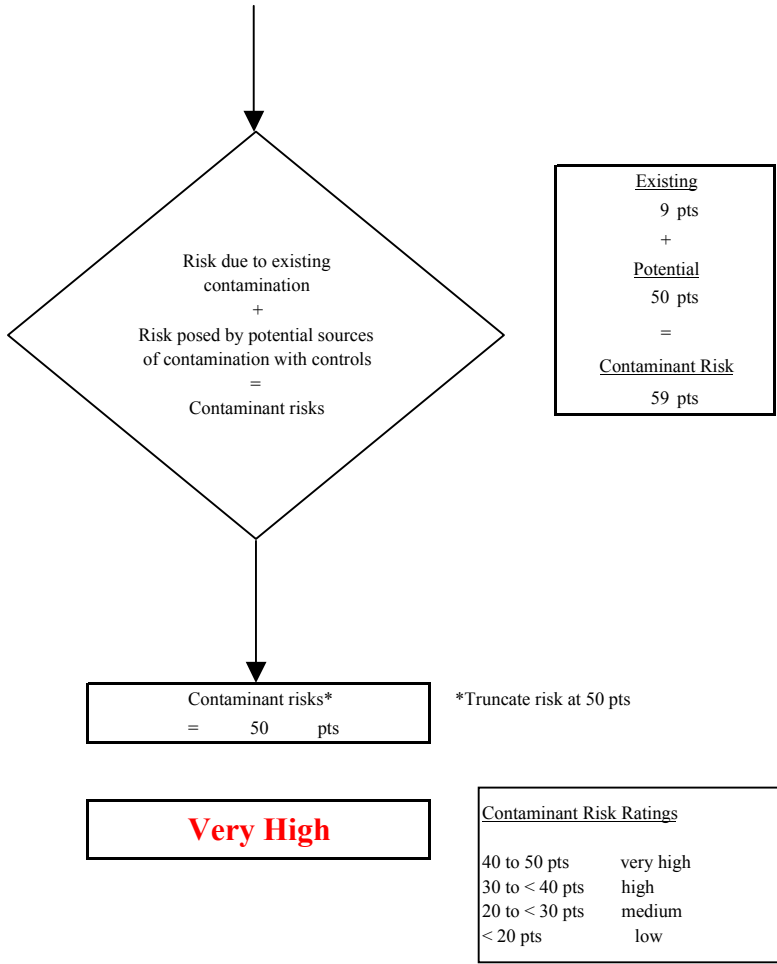
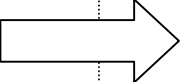
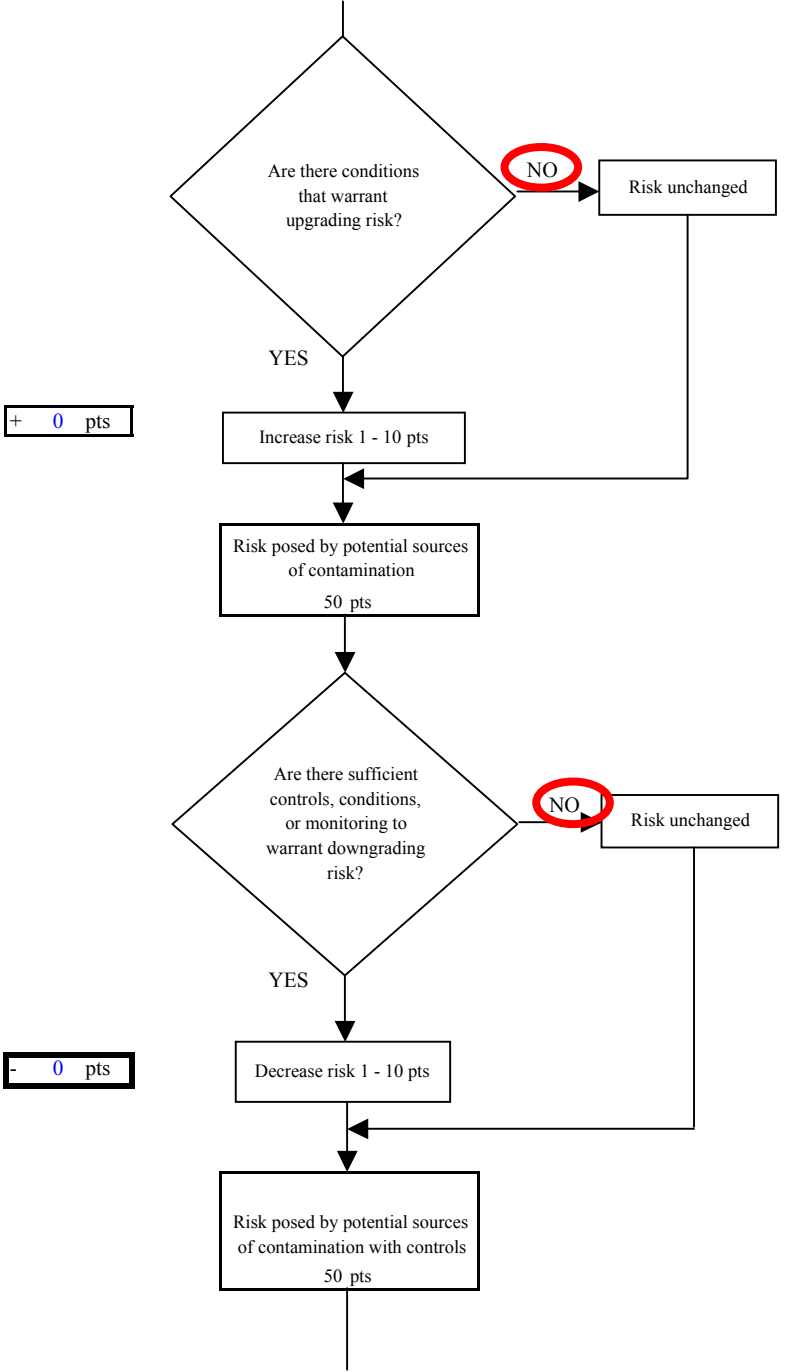


Chart 6. Vulnerability analysis for *Anchor Point Roadhouse* - Nitrates and Nitrites

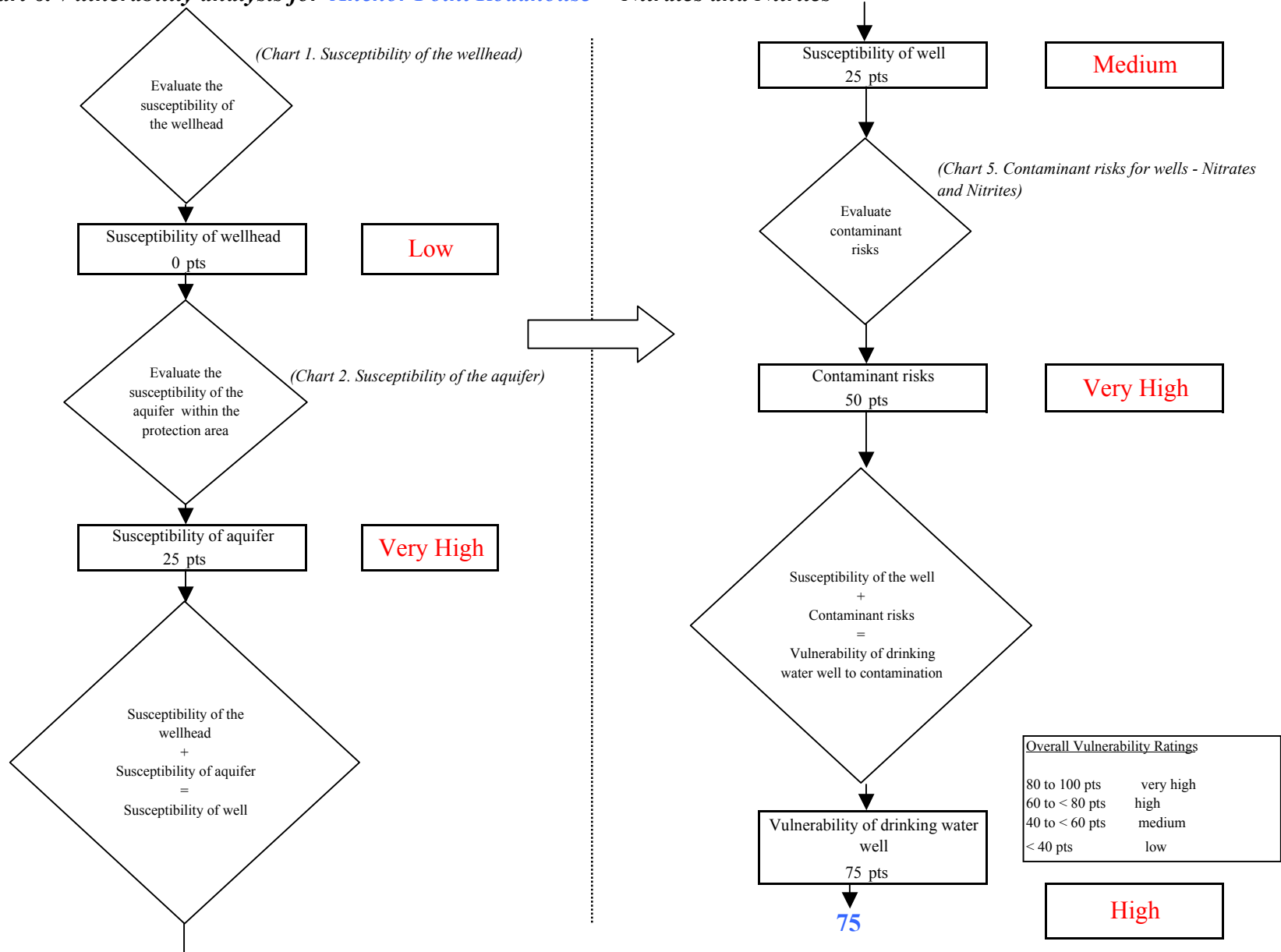


Chart 7. Contaminant risks for *Anchor Point Roadhouse* - Volatile Organic Chemicals

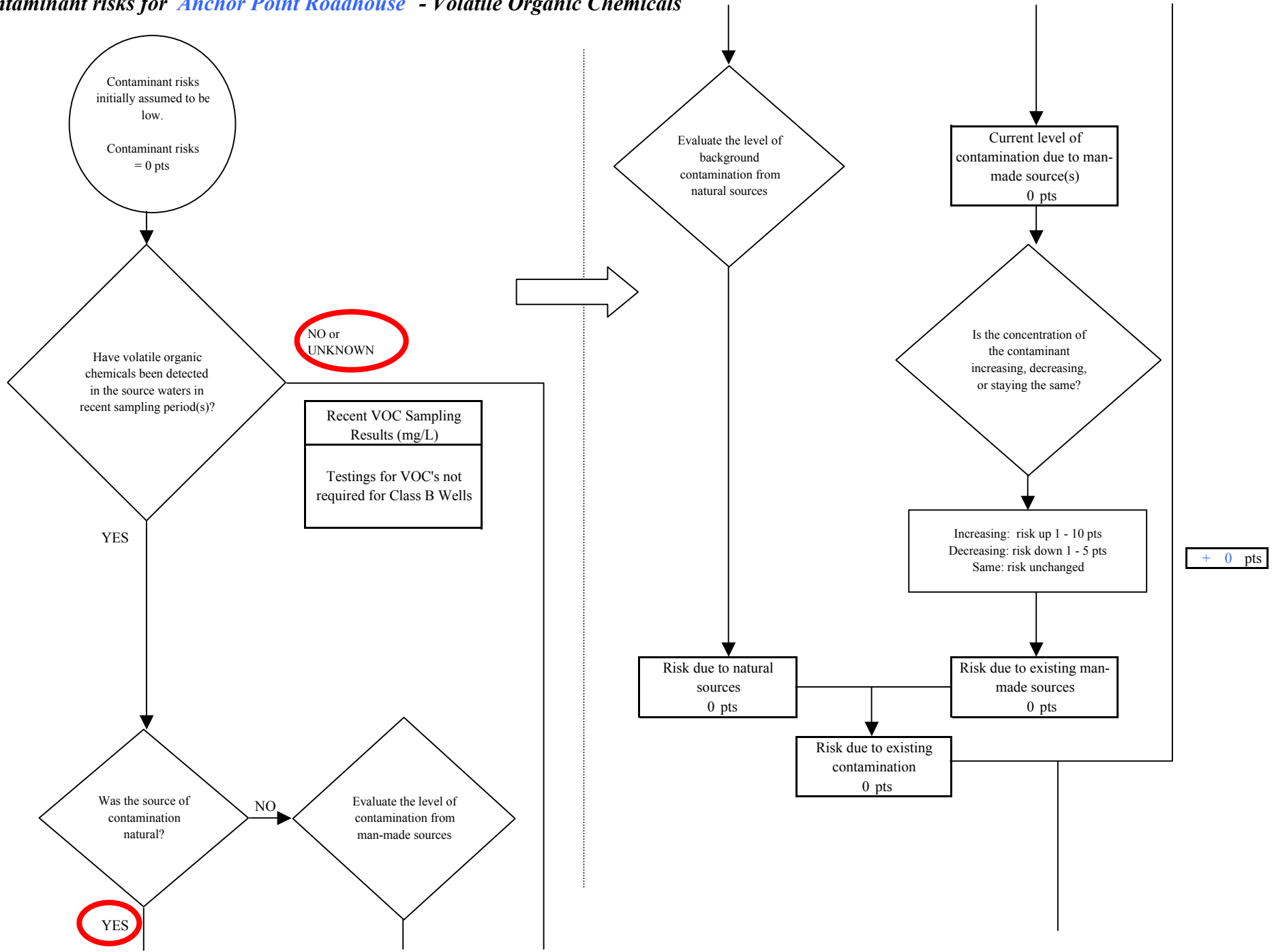


Chart 7. Contaminant risks for Anchor Point Roadhouse - Volatile Organic Chemicals

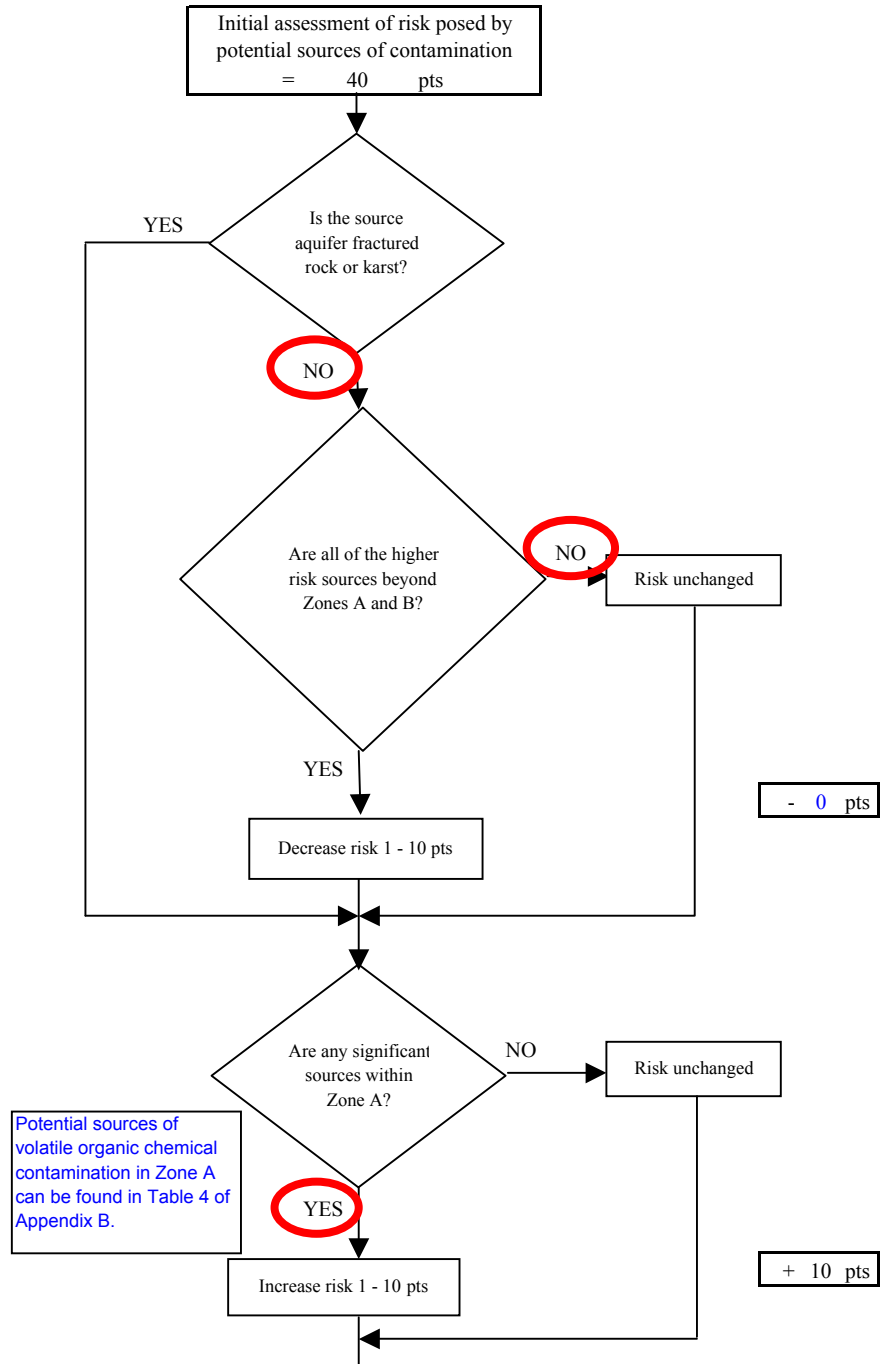
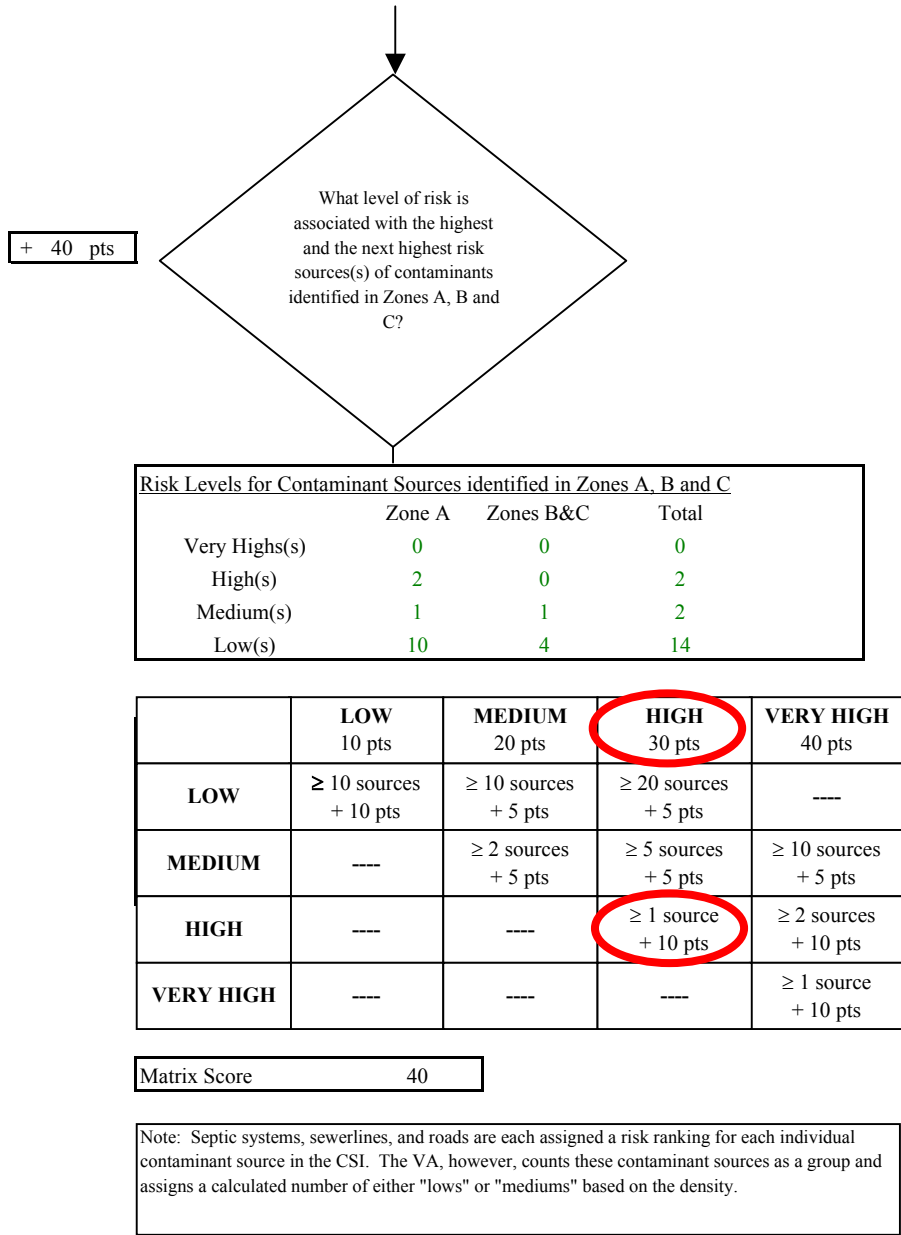


Chart 7. Contaminant risks for Anchor Point Roadhouse - Volatile Organic Chemicals

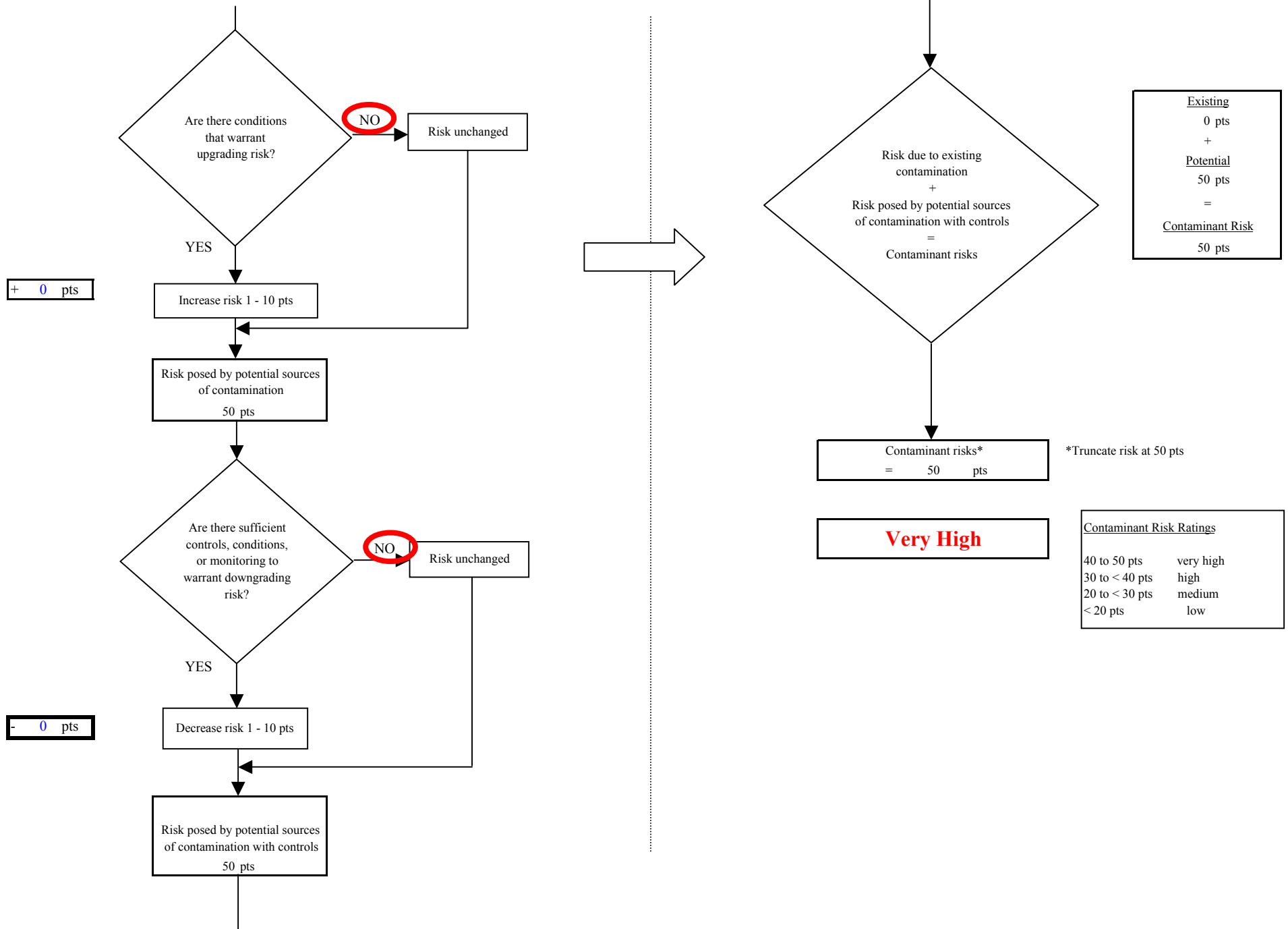


Chart 8. Vulnerability analysis for *Anchor Point Roadhouse* - Volatile Organic Chemicals

