

Source Water Assessment

A Hydrogeologic Susceptibility and
Vulnerability Assessment for

Puffin Inn,
Anchorage, Alaska
PWSID#210540.001

DRINKING WATER PROTECTION PROGRAM REPORT 698

Alaska Department of Environmental Conservation
September 2002

Source Water Assessment for Puffin Inn Anchorage, Alaska PWSID#210540.001

DRINKING WATER PROTECTION PROGRAM REPORT 698

The Drinking Water Protection Program is producing Source Water Assessments in compliance with the Safe Drinking Water Act Amendments of 1996. Each assessment includes a delineation of the source water area, an inventory of potential and existing contaminant sources that may impact the water, a risk ranking for each of these contaminants, and an evaluation of the potential vulnerability of these drinking water sources.

These assessments are intended to provide public water systems owners/operators, communities, and local governments with the best available information that may be used to protect the quality of their drinking water. The assessments combine information obtained from various sources, including the U.S. Environmental Protection Agency, Alaska Department of Environmental Conservation (ADEC), public water system owners/operators, and other public information sources. The results of this assessment are subject to change if additional data becomes available. If you have any additional information that may affect the results of this assessment, please contact the Program Coordinator of DWPP, (907) 269-7521.

Source Water Assessment for Puffin Inn’s Source of Public Drinking Water, Anchorage, Alaska

A Hydrogeologic Susceptibility and Vulnerability Analysis

Drinking Water Protection Program Alaska Department of Environmental Conservation

EXECUTIVE SUMMARY

The public water system for Puffin Inn is a Class A (community) water system consisting of one well in the Anchorage area. Identified potential and current sources of contaminants for Puffin Inn includes: sewer lines, residential areas, roads, recreational trails, Leaking Underground Storage Tank (LUST) and electric substations. These identified potential and existing sources of contamination are considered sources of bacteria and viruses, nitrates and/or nitrites, volatile organic chemicals. Overall, Puffin Inn received a vulnerability rating of **Medium** for bacteria and viruses, nitrates and/or nitrites and volatile organic chemicals.



Figure 1. Index map showing the location of Anchorage, Alaska

INTRODUCTION

The purpose of this environmental assessment is to provide public water system owners and/or operators, communities, and local governments with information they can use to preserve the quality of Alaska’s public drinking water supplies. This assessment was completed for the source of public drinking water serving the Puffin Inn. This water system consists of one well in the Anchorage area (see Figure 1). This assessment, known under the Alaska Drinking Water Protection Program as the *Source Water Assessment*, has combined a review of the natural hydrogeologic sensitivity with potential and existing contaminant risks to arrive at an overall vulnerability of the drinking water source to contamination. This assessment has been completed as a basis for local voluntary protection efforts and to assist agencies in their efforts to reduce risk to this public drinking water supply.

DESCRIPTION OF THE ANCHORAGE AREA, ALASKA

Location

Anchorage, located in southcentral Alaska, encompasses 1,698 square miles of land and 264 square miles of water. The area containing a majority of the urban development, commonly referred to as the Anchorage Bowl, encompasses approximately 180 square miles [Partick, Brabets, and Glass, 1989] and envelopes the low lands of the area. This area is bounded on the east by the Chugach Mountains and the north, west, and south by the Knik and Turnagain Arms of Cook Inlet (Figure 1). In recent times, urban development has extended eastward along the flanks of the Chugach Mountains. This area, known locally as the Anchorage Hillside, contains development at elevations exceeding 3,700 feet in elevation above sea level.

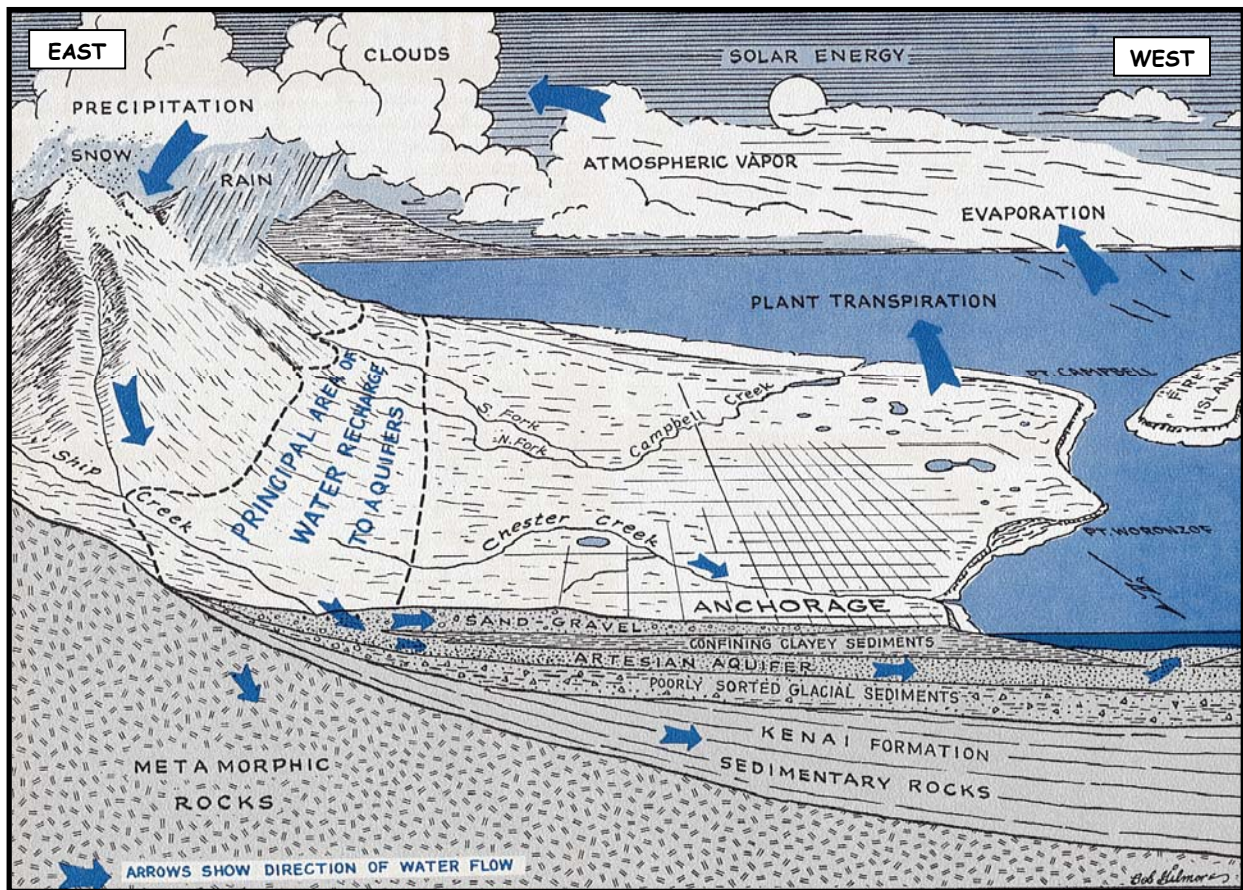


Figure 2. Generalized hydrologic cycle in the Anchorage area [Barnwell, George, Dearborn, Weeks, and Zenone, 1972].

Climate

The Anchorage area climate is somewhat transitional in that it does not experience large daily and annual temperature fluctuations like those experienced in the interior of Alaska nor does it experience high amounts of precipitation typified by gulf coast regions. Mean annual precipitation at the Anchorage International Airport is approximately 16 inches per year. On average, Anchorage receives a total snow accumulation of 69 inches per year. Precipitation generally increases inland toward the Chugach Mountains where annual precipitation may exceed 160 inches per year [Barnwell, George, Dearborn, Weeks, and Zenone, 1972]. Mean daily temperature ranges from 65° F during July to 8° F in January [Western Regional Climate Center, 2000].

Physiography and Groundwater Conditions

Surface elevations in the Anchorage area range from sea level at Knik and Turnagain Arms to well over 5,000 feet in the peaks that bound the area. Glacial moraine and outwash deposits primarily mantle the surface of the Anchorage Bowl.

The backbone of the Chugach Mountains is composed primarily of metamorphic marine and volcanic rocks (bedrock). These high peaks that bound Anchorage's east side are flanked with colluvium or slope deposits. These

slope deposits eventually grade into the glacial and stream deposits at lower elevations in the Anchorage Bowl.

In the Anchorage area, two principal groundwater flow systems or aquifers exist (see Figure 2). The upper unconfined aquifer or water-table aquifer is separated from a lower confined aquifer system by layers of silty, clayey glacially derived sediments (confining layer) [Ulery and Updike, 1983]. The lower confined aquifer system consists of a series of hydrologically interconnected layers and lenses of gravel, sand and silt that, collectively, form the confined aquifer. The confining layer ranges from 0 to 270 feet thick throughout the Anchorage area and generally thins with increasing distance from Cook Inlet, thus pinching out at the mountain front [Patrick, Brabets, and Glass, 1989].

Water enters or recharges these two aquifer systems in several different ways. Along the front of the Chugach

Mountains, groundwater seeps from fractures in bedrock into the sediments. At these higher elevations, rain and snowmelt also enter the sediments. This area along the mountain front is considered the principal recharge area for wells in the Anchorage area. Precipitation in the low lands may also percolate directly into the ground. Lastly, aquifers may also be recharged by streams where surface

water percolates into surrounding permeable sediments (losing reaches of streams). Groundwater flow in the confined aquifer is generally east to west from the mountain front toward Cook Inlet and Turnagain Arm, except in areas where the direction of flow is influenced by large municipal or industrial production wells. The direction of groundwater flow in the upper unconfined aquifer is more variable due to the influence from surficial topography as well as its close connection with surface water bodies.

PUFFIN INN PUBLIC DRINKING WATER SYSTEM

Puffin Inn is a Class B (transient/non-community) water system. The system one well in the Anchorage area. (See Map 1 of Appendix A). This area is at an elevation of approximately 100 feet above sea level.

The 1998 Sanitary Survey indicates that the wells are installed with caps providing a sanitary seal. A properly installed sanitary seal may provide protection against contaminants from entering the source waters at the well casing. The exact date which the well was installed is unknown. However, since it is located in the basement of an older building it is suspected that the well was not grouted according to ADEC regulations. Proper grouting provides added protection against contaminants traveling along the well casing and into source waters.

The well log was not located for this well. A nearby well log from a well approximately 520 feet southeast indicates a gravely clay layer exists from 35 to 75 feet below the surface (bls). The static water level of the nearby well was 44 feet (bls) at the time of drilling (1966). This confining layer may provide protection from contaminants entering the aquifer. However, the clay layers tend to thin out towards the mountains allowing contaminants that enter the subsurface near the base of the mountains to enter the confined aquifer uninhibited by the absence of any protective layer.

This system operates 365 days per year and serves 50 non-residents through two service connections.

ASSESSMENT AND PROTECTION AREA FOR PUFFIN INN DRINKING WATER SOURCE

The Drinking Water Protection and Assessment Area that has been established for the source of drinking water serving the Puffin Inn is the area that is most sensitive to contamination. This area has served as a basis for assessing the risk of the drinking water source to contamination. The zones around the drinking water source outline the most critical area for the preservation

of the quality of the drinking water for this system. For simplicity, this area will be known as your Drinking Water Protection Area and will serve as the focus for voluntary protection efforts.

Conceptually, groundwater enters the aquifer systems along the front range of the Chugach Mountains (Figure 2) and flows toward Cook Inlet. An analytical calculation was used to determine the size and shape of the area that contributes water to the well. The input parameters describing the attributes of the aquifer in this calculation were adopted from the U.S. Geological Survey [*Patrick, Brabets, and Glass, 1989*]. This analytical calculation was used as a guide as the first step in establishing the protection area for each public drinking water source in Anchorage. Additional methods were further employed to take into account any uncertainties in groundwater flow and aquifer characteristics to arrive at meaningful and conservative protection areas with respect to public health (Please refer to the Guidance Manual for Class B Public Water Systems for additional information).

The Drinking Water Protection Areas established for wells by the Alaska Department of Environmental Conservation are separated into zones. These zones correspond to a time-of-travel. Time-of-travel is the time required for water to move in the saturated zone of the ground from a specific point to the well. The Drinking Water Protection Area for Puffin Inn contains four zones, Zone A through Zone D (See Map 1 in Appendix A). Zone A corresponds to the area between the well and the distance equal to $\frac{1}{4}$ of the distance of the 2-year time-of-travel. Depending on where a contaminant source is located within Zone A, travel time for a contaminant to the well may be on the order of several days to several hours. Zone A also extends downgradient from the well to take into account the area of the aquifer that is influenced by pumping of the well. Zone B corresponds to a time-of-travel of less than two years. Zones C and D correspond to those areas between 5 years and 10 years time-of-travel, respectively.

INVENTORY OF POTENTIAL AND EXISTING CONTAMINANT SOURCES

The Drinking Water Protection Program has completed an inventory of potential and existing sources of contamination within the Drinking Water Protection Area for Puffin Inn. This assessment was completed through a search of agency records and other publicly available information. Potential sources of contamination to drinking water supplies cover a wide range of categories and types. Potential drinking water contaminants are found within agricultural, residential, commercial, and industrial areas, but can also occur within areas that have little or no development.

For the basis of this assessment and all Class B public water system assessments, three categories of drinking water contaminants were inventoried. They include:

- Bacteria and viruses
- Nitrates and/or nitrites
- Volatile organic chemicals

Map 2 in Appendix C depicts the Contaminant Source Inventory for Puffin Inn.. Table 1 in Appendix B lists the inventoried potential sources of contamination within Zones A through D.

RANKING OF CONTAMINANT RISKS

Once the potential and existing sources of contamination have been identified, they are assigned a ranking according to what type and level of risk they represent. Ranking of contaminant risks for a “potential” or “existing” source of contamination is a function of toxicity and volumes of specific contaminants associated with that source.

Tables 2 through 4 in Appendix B contain the ranking of potential and existing sources of contamination with respect to bacteria and viruses, nitrates and/or nitrites, volatile organic chemicals.

VULNERABILITY OF PUFFIN INN’S DRINKING WATER SOURCE

Vulnerability of a drinking water source to contamination is a combination of two factors:

- natural susceptibility; and
- contaminant risks.

Each of the three categories of drinking water contaminants have been analyzed and an overall vulnerability score of 0 to 100 ultimately assigned:

Natural Susceptibility (0 – 50 points)

+

Contaminant Risks (0 – 50 points)

=

Vulnerability of the Drinking Water Source to Contamination (0 – 100).

A score for the Natural Susceptibility is achieved by analyzing the properties of the well and the aquifer.

Susceptibility of the Wellhead (0 – 25 Points)

+

Susceptibility of the Aquifer (0 – 25 Points)

= Natural Susceptibility (Susceptibility of the Well) (0 – 50 Points)

Combining the susceptibility of the wellhead and the aquifer to contamination leads to a score (0 – 50 points) and rating of overall Susceptibility of the well to contamination (See Appendix D). Table 1 depicts the overall Susceptibility score and rating for the source of public drinking water serving the Puffin Inn.

Table 1. Natural Susceptibility - Susceptibility of the Wellhead and Aquifer to Contamination

	Score	Rating
Susceptibility of the Wellhead	5	Low
Susceptibility of the Aquifer	10	Medium
Natural Susceptibility	15	Low

Contaminant risks to a drinking water source depend on the type, number or density, and distribution of contaminant sources. A score (0 – 50 points) and rating of Contaminant Risks (See Appendix D) is assigned based on the findings of the Contaminant Source Inventory (See Appendix B - Table 1 – Table 7). This portion of the analysis examines any existing or historical contamination that has been detected at the drinking water source through routine sampling. It also reviews contamination that has or may have occurred but has not arrived or been detected at the well. Table 2 summarizes the Contaminant Risks for each category of drinking water contaminants.

Table 2. Contaminant Risks

Contaminant Risks	Score	Rating
Bacteria and Viruses	25	Medium
Nitrates and/or Nitrites	25	Medium
Volatile Organic Chemicals	40	Very High

Appendix D contains eight charts, which together form the ‘Vulnerability Analysis’ for a Class B public drinking water system. Chart 1 analyzes the ‘Susceptibility of the Wellhead’ to contamination by looking at the construction of the well and its surrounding area. Chart 2 analyzes the ‘Susceptibility of the Aquifer’ to contamination by looking at the naturally occurring attributes of the water source and influences on the groundwater system that might lead to contamination. Chart 3 analyzes ‘Contaminant Risks’ for the drinking water source with respect to bacteria and viruses. The ‘Contaminant Risks’ portion of the analysis considers potential sources of contaminants as well as a review of contamination that has or may have occurred but has not arrived or been detected at the well. Lastly, Chart 4 contains the ‘Vulnerability Analysis for Bacteria and Viruses’. Charts 5 through 8 contain the Contaminant Risks and Vulnerability Analysis for nitrates and nitrites, volatile organic chemicals, respectively. Vulnerability of the drinking water source to contamination is the combination of susceptibility of the aquifer and the well with contaminant risks. Table 3 contains the overall vulnerability scores (0 – 100) and ratings for each of the three categories of drinking water contaminants (See Appendix D). Note: scores are rounded off to the nearest five.

Table 3. Overall Vulnerability of Puffin Inn’s Public Drinking Water Source to Contamination by Category

Category	Score	Rating
Bacteria and Viruses	40	Medium
Nitrates and Nitrites	45	Medium
Volatile Organic Chemicals	55	High

Tables 2 through 4 in Appendix B contain the ranking of potential and existing sources of contamination with respect to bacteria and viruses, nitrates and/or nitrites, and volatile organic chemicals.

Bacteria and Viruses

The contaminant risk for bacteria and viruses is medium with sewer lines and parks presenting the most significant risk to the drinking water well (See Chart 3 – Contaminant Risks for Bacteria and Viruses in Appendix D).

Sampling of the well indicates that no bacteria and viruses have been detected.

After combining the contaminant risk for bacteria and viruses with the natural susceptibility of the well, the overall vulnerability is medium.

Nitrates and Nitrites

The contaminant risk for nitrates and nitrites is medium with sewer lines, recreation trails and roads presenting the most significant risk to the drinking water well.

Nitrate concentrations in uncontaminated groundwater are typically less than 2 milligrams per liter (mg/L) and are derived primarily from the decomposition of organic matter in soils [Wang, Strelakos, Jokela, 2000]. Sampling history for Baxter Trailer Court indicates low concentrations of nitrates have been detected in source waters. The most recent nitrate detection occurred March 28th, 2002, at approximately 1% of the Maximum contaminant Level or MCL. (See Chart 5 - Contaminant Risks for Nitrates and/or Nitrites in Appendix D).

The MCL is the maximum level of contaminant that is allowed to exist in drinking water and still be consumed by humans. Due to the high solubility and weak retention by soil, nitrates are very mobile, moving at approximately the same rate as water. Though nitrates were detected at the site, concentrations remain at safe levels with respect to human health.

After combining the contaminant risk for nitrates and nitrites with the natural susceptibility of the well, the overall vulnerability of the well to contamination is

medium.

Volatile Organic Chemicals

The contaminant risk for volatile organic chemicals is very high with a closed Leaning Underground Storage Tank (LUST), sewers and roads presenting the most significant risk for volatile organic chemicals (See Chart 7 – Contaminant Risks for Volatile Organic Chemicals in Appendix D).

A closed LUST site, (File No. L55.70), is located at 4410 Spenard Road. In 1990, a 10,000-gallon fuel tank was removed and contamination was found present in the groundwater. Monitoring wells installed and detected elevated levels of benzene. Soil was excavated and was reportedly below ADEC clean up levels. The site is currently inactive and is considered high priority.

Sampling on 5/21/90 indicates that no volatile organic chemicals have been detected in the source waters. (See Chart 7 – Contaminant Risks for Volatile Organic Chemicals in Appendix D.) No further testing has occurred.

After combining the contaminant risk for volatile organic chemicals with the natural susceptibility of the wells, the overall vulnerability of the wells to contamination is medium.

SUMMARY

A *Source Water Assessment* has been completed for the source of public drinking water serving Puffin Inn. The overall vulnerability of this source to contamination is **Medium** for bacteria and viruses, nitrates and/or nitrites and volatile organic chemicals. This assessment of contaminant risks can be used as a foundation for local voluntary protection efforts as well as a basis for the continuous efforts on the part of Puffin Inn to protect public health. It is anticipated that *Source Water Assessments* will be updated every five years to reflect any changes in the vulnerability and/or susceptibility of Puffin Inn 's public drinking water source.

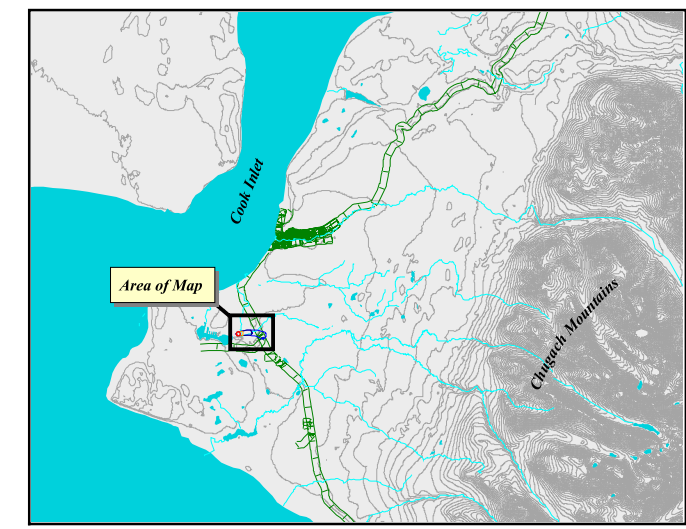
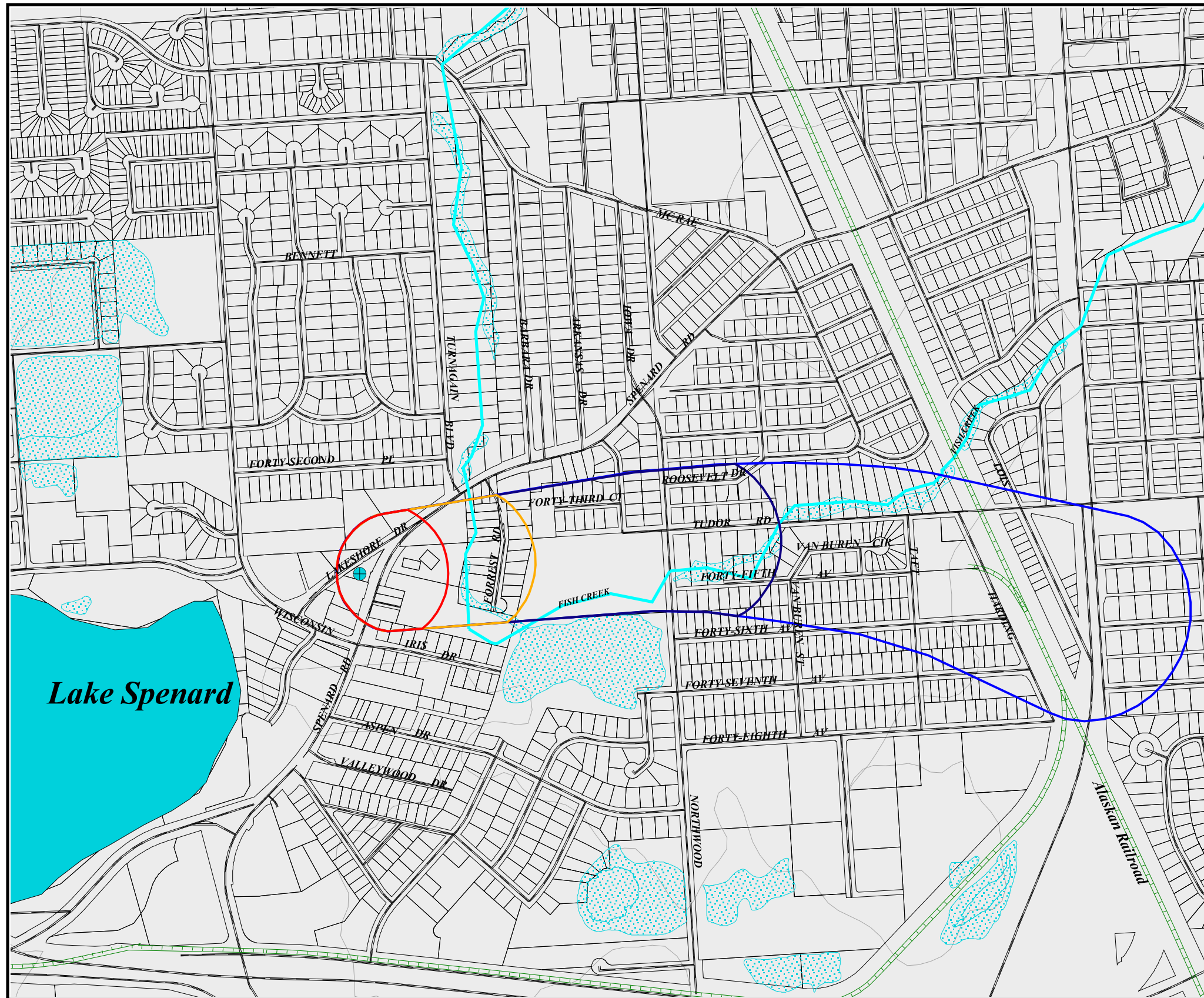
REFERENCES CITED

- Barnwell, W.W., George, R.S., Dearborn, L.L., Weeks, J.B., and Zenone, C., 1972, Water for Anchorage: an atlas of the water resources of the Anchorage area, Alaska: U.S. Geological Survey Open-File Report, 76 p.
- Patrick, L.D., Brabets, T.P., and Glass, R.L., 1989, Simulation of ground-water flow at Anchorage, Alaska: U.S. Geological Survey Water-Resources Investigations Report 88-4139, 41p.
- Ulery, C.A. and Updike, R.G, 1983, Subsurface structure of the cohesive facies of the Bootlegger Cove Formation, Southwest Anchorage, Alaska: Alaska Division of Geological and Geophysical Surveys Professional Report 84, 5 p.
- Wang, B., Strelakos, P.M., and Jokela, B., 2000, Nitrate Source Indicators In Groundwater of the Scimitar Subdivision, Peters Creek Area, Anchorage Alaska: U.S. Geological Survey Water-Resources Investigations Report 00-4137, 25p.
- Western Regional Climate Center, 2000, August 24, Web extension to the *Western Regional Climate Center* [WWW document]. URL <http://www.wrcc.dri.edu/index.html>

APPENDIX A

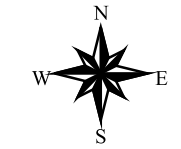
Puffin Inn's Drinking Water Protection Area

Drinking Water Protection Area for Puffin Inn



0 2 Miles

PWSID 210540.001



Map 1

APPENDIX B

Contaminant Source Inventory and Risk Ranking for Puffin Inn

Table 1

**Contaminant Source Inventory for
Puffin Inn**

PWSID 210540.001

Contaminant Source Type	Contaminant Source ID	CS ID tag	Zone	Map Number	Comments
Jewelers	C19	C19-01	A	2	
Closed Leaking Underground Fuel Storage Tank (LUST) Sites	U08	U08-01	A	2	Found contaminated soil during removal of two 10,000 gallon underground storage tank. Impact to human health unknown, extent & amount of contamination unknown. Remediation action was taken and the levels meet ADEC clean up requirements. Status: Closed
Highways and roads, paved (cement or asphalt)	X20	X20-01	A	2	Spenard Road
Highways and roads, paved (cement or asphalt)	X20	X20-02	A	2	Lakeshore Drive
Dog walking areas/foot trails	X46	X46-01	A	2	
Dog walking areas/foot trails	X46	X46-02	A	2	
Dog walking areas/foot trails	X46	X46-03	A	2	
Highways and roads, paved (cement or asphalt)	X20	X20-03	B	2	Forest Road
Municipal or city parks (with green areas)	X04	X04-01	C	2	
Highways and roads, paved (cement or asphalt)	X20	X20-04-08	C	2	Zone C has 7 roads
Dog walking areas/foot trails	X46	X46-04	C	2	
Electric substation	X37	X37-01	D	3	

Table 2

*Contaminant Source Inventory and Risk Ranking for
Puffin Inn
Sources of Bacteria and Viruses*

PWSID 210540.001

<i>Contaminant Source Type</i>	<i>Contaminant Source ID</i>	<i>CS ID tag</i>	<i>Zone</i>	<i>Risk Ranking for Analysis</i>	<i>Map Number</i>	<i>Comments</i>
Highways and roads, paved (cement or asphalt)	X20	X20-01	A	Low	2	Spenard Road
Highways and roads, paved (cement or asphalt)	X20	X20-02	A	Low	2	Lakeshore Drive
Dog walking areas/foot trails	X46	X46-01	A	Low	2	
Dog walking areas/foot trails	X46	X46-02	A	Low	2	
Dog walking areas/foot trails	X46	X46-03	A	Low	2	
Highways and roads, paved (cement or asphalt)	X20	X20-03	B	Low	2	Forest Road
Dog walking areas/foot trails	X46	X46-04	C	Low	2	

Table 3

*Contaminant Source Inventory and Risk Ranking for
Puffin Inn
Sources of Nitrates/Nitrites*

PWSID 210540.001

<i>Contaminant Source Type</i>	<i>Contaminant Source ID</i>	<i>CS ID tag</i>	<i>Zone</i>	<i>Risk Ranking for Analysis</i>	<i>Map Number</i>	<i>Comments</i>
Highways and roads, paved (cement or asphalt)	X20	X20-01	A	Low	2	Spenard Road
Highways and roads, paved (cement or asphalt)	X20	X20-02	A	Low	2	Lakeshore Drive
Dog walking areas/foot trails	X46	X46-01	A	Low	2	
Dog walking areas/foot trails	X46	X46-02	A	Low	2	
Dog walking areas/foot trails	X46	X46-03	A	Low	2	
Highways and roads, paved (cement or asphalt)	X20	X20-03	B	Low	2	Forest Road
Municipal or city parks (with green areas)	X04	X04-01	C	Medium	2	
Highways and roads, paved (cement or asphalt)	X20	X20-04-08	C	Low	2	Zone C has 7 roads
Dog walking areas/foot trails	X46	X46-04	C	Low	2	

Table 4

*Contaminant Source Inventory and Risk Ranking for
Puffin Inn
Sources of Volatile Organic Chemicals*

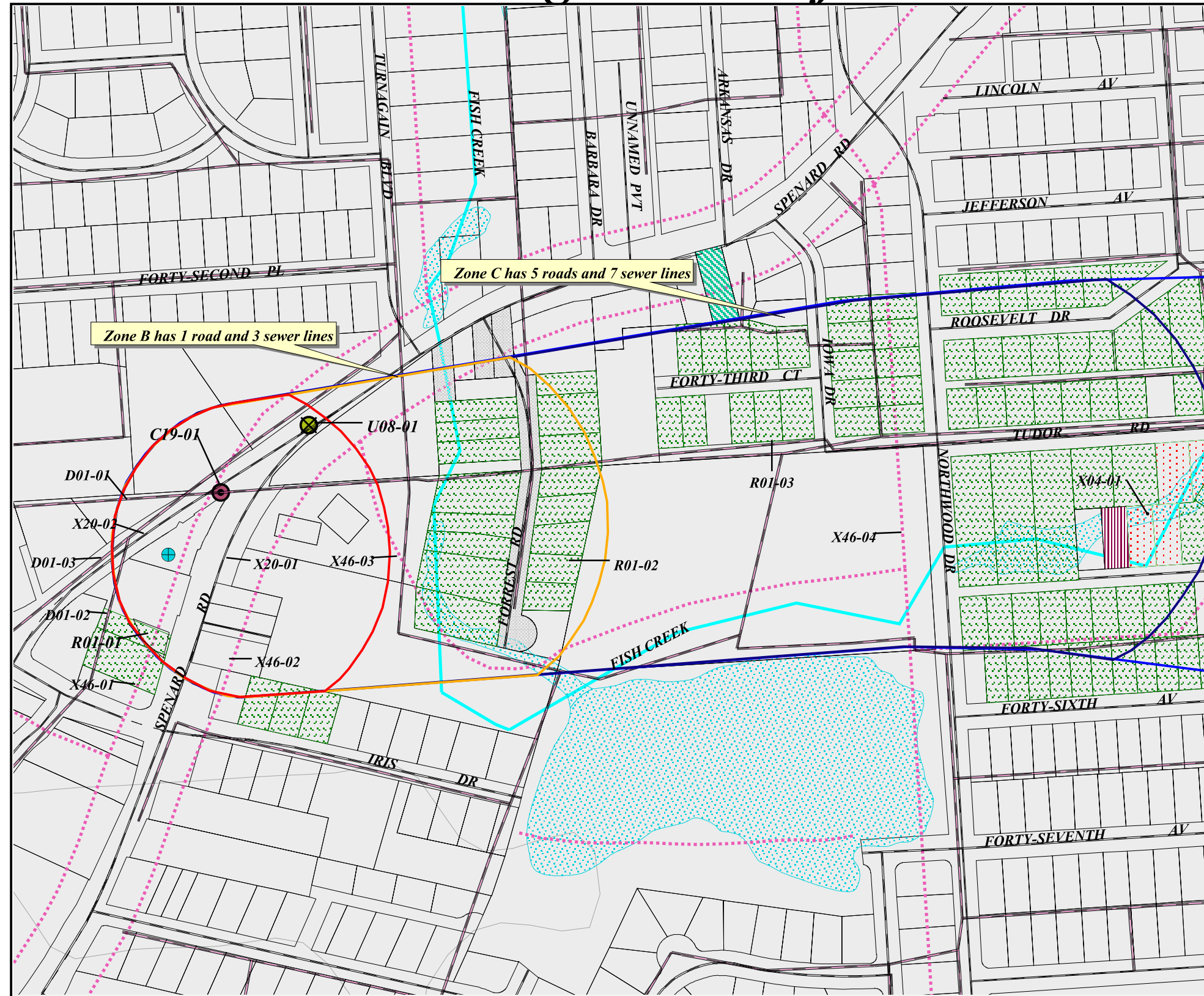
PWSID 210540.001

<i>Contaminant Source Type</i>	<i>Contaminant Source ID</i>	<i>CS ID tag</i>	<i>Zone</i>	<i>Risk Ranking for Analysis</i>	<i>Map Number</i>	<i>Comments</i>
Jewelers	C19	C19-01	A	Low	2	
Closed Leaking Underground Fuel Storage Tank (LUST) Sites	U08	U08-01	A	High	2	Found contaminated soil during removal of two 10,000 gallon underground storage tank. Impact to human health unknown, extent & amount of contamination unknown. Remediation action was taken and the levels meet ADEC clean up requirements. Status: Closed
Highways and roads, paved (cement or asphalt)	X20	X20-01	A	Low	2	Spenard Road
Highways and roads, paved (cement or asphalt)	X20	X20-02	A	Low	2	Lakeshore Drive
Highways and roads, paved (cement or asphalt)	X20	X20-03	B	Low	2	Forest Road
Highways and roads, paved (cement or asphalt)	X20	X20-04-08	C	Low	2	Zone C has 7 roads
Electric substation	X37	X37-01	D	Low	3	
Electric substation	X37	X37-01	D	High	3	

APPENDIX C

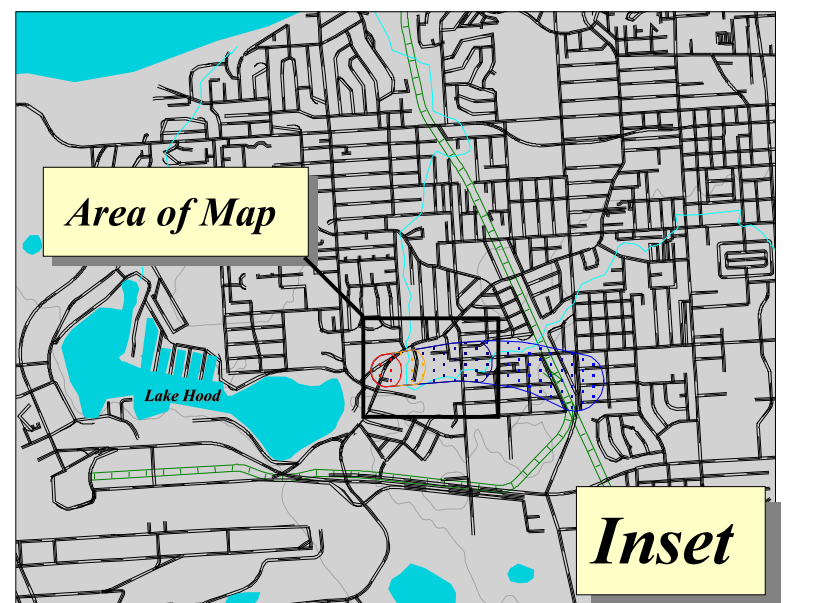
Puffin Inn's Drinking Water Protection Area and Potential & Existing Contaminant Sources

Drinking Water Protection Area for Puffin Inn and Potential and Existing Sources of Contamination



Legend

- Puffin Inn Well
- Zone A Protection Area
- Zone B Protection Area
- Zone C Protection Area
- Zone D Protection Area
- Roads
- Sewers (D01)
- Potential and Existing Sources of Contamination
- Closed Leaking Underground Fuel Storage Tank (LUST) Site (U08)
- Jewelers (C19)
- Land Use**
- Commercial Areas
- Construction trade areas and materials
- Lawns and gardens
- Motor vehicle/general storage yards/facilit
- Municipal or city parks (with green areas)
- Street and Highway ROW's
- Vacant Land
- Warehousing, Wholesale Distribution
- Trails
- Lakes
- Wetlands
- Streams
- Cook Inlet
- Land Parcels
- Elevation Contours - 20 meters

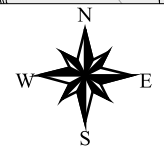
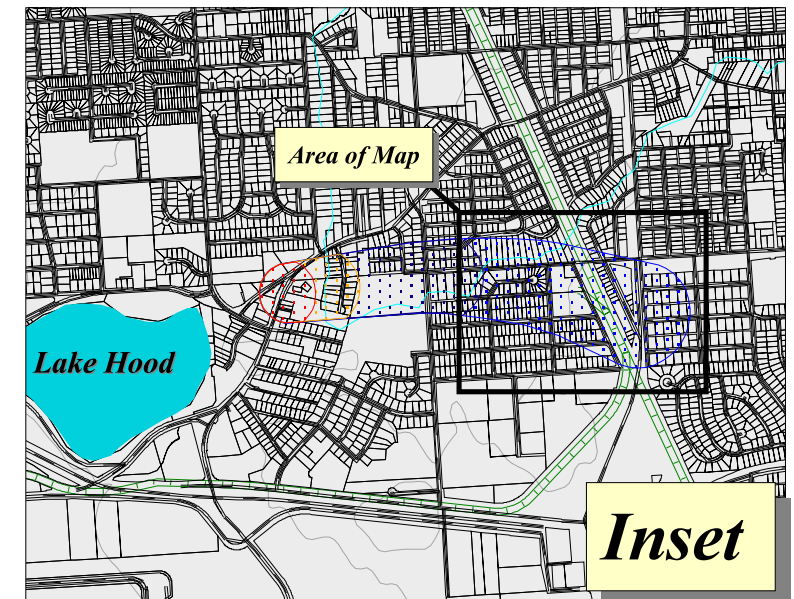
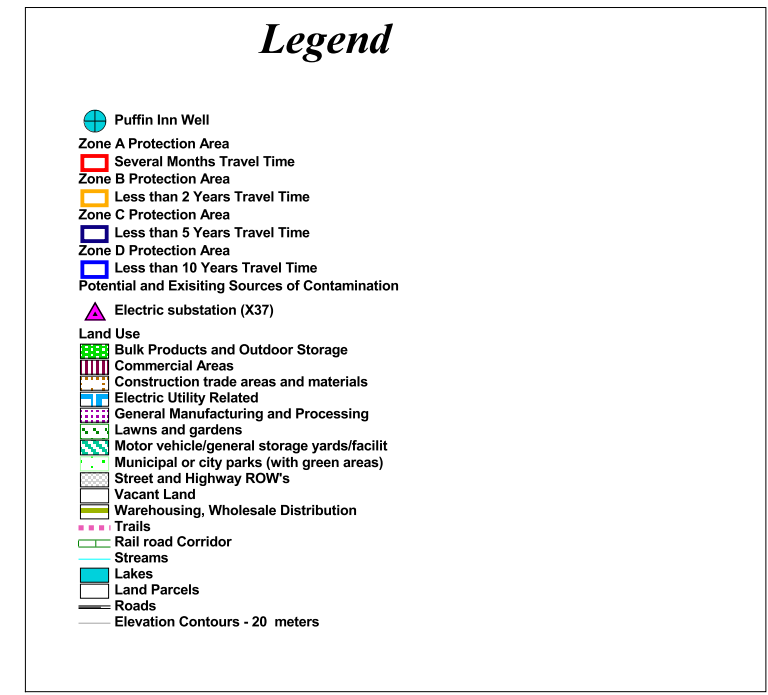
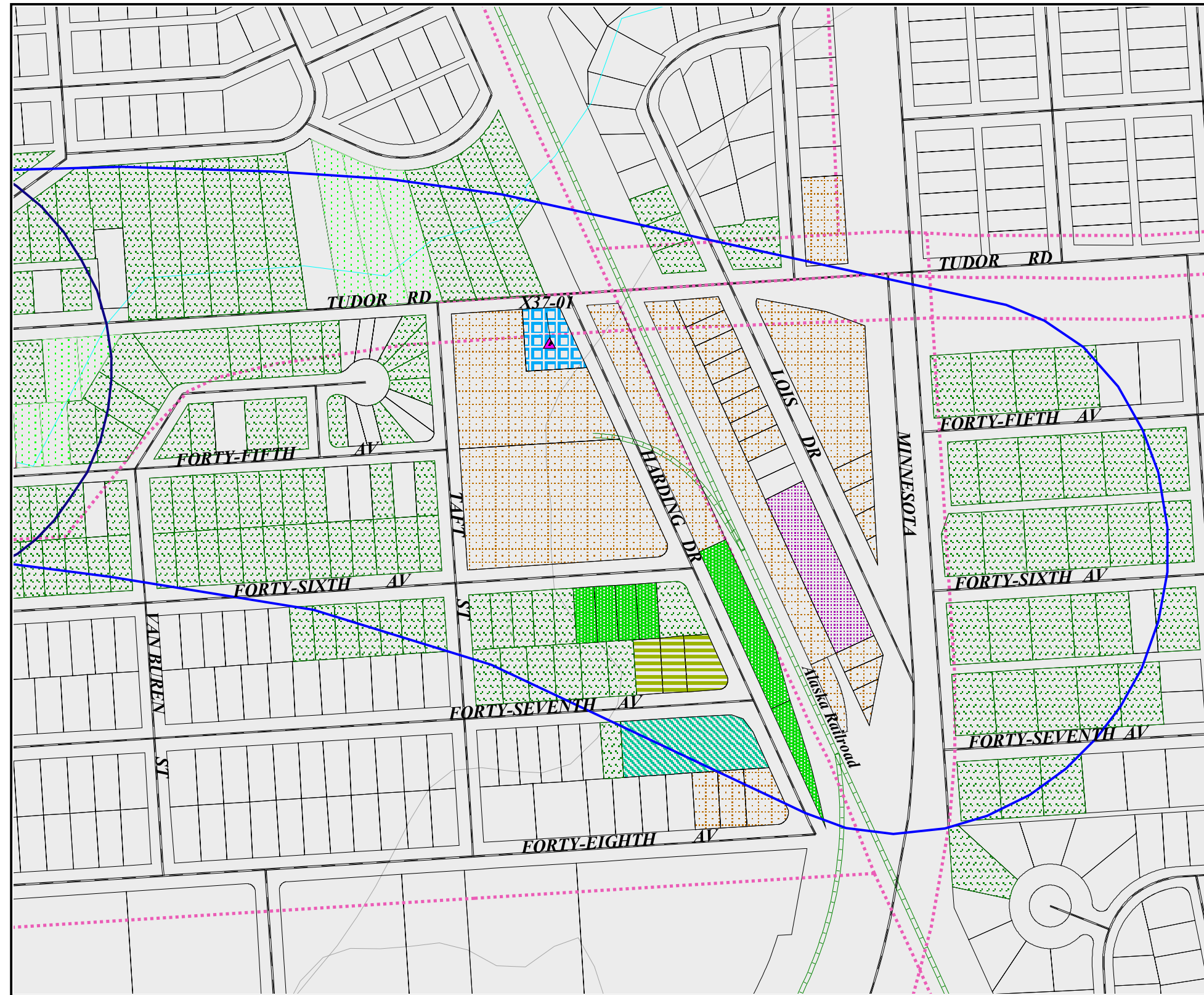


0 2 Miles

PWSID 210540.001

Map 2

Drinking Water Protection Area for Puffin Inn and Potential and Existing Sources of Contamination



Map 3

0 2 Miles

PWSID 210540.001

APPENDIX D

Vulnerability Analysis for Puffin Inn's Public Drinking Water Source

Chart 1. Susceptibility of the wellhead - Puffin Inn

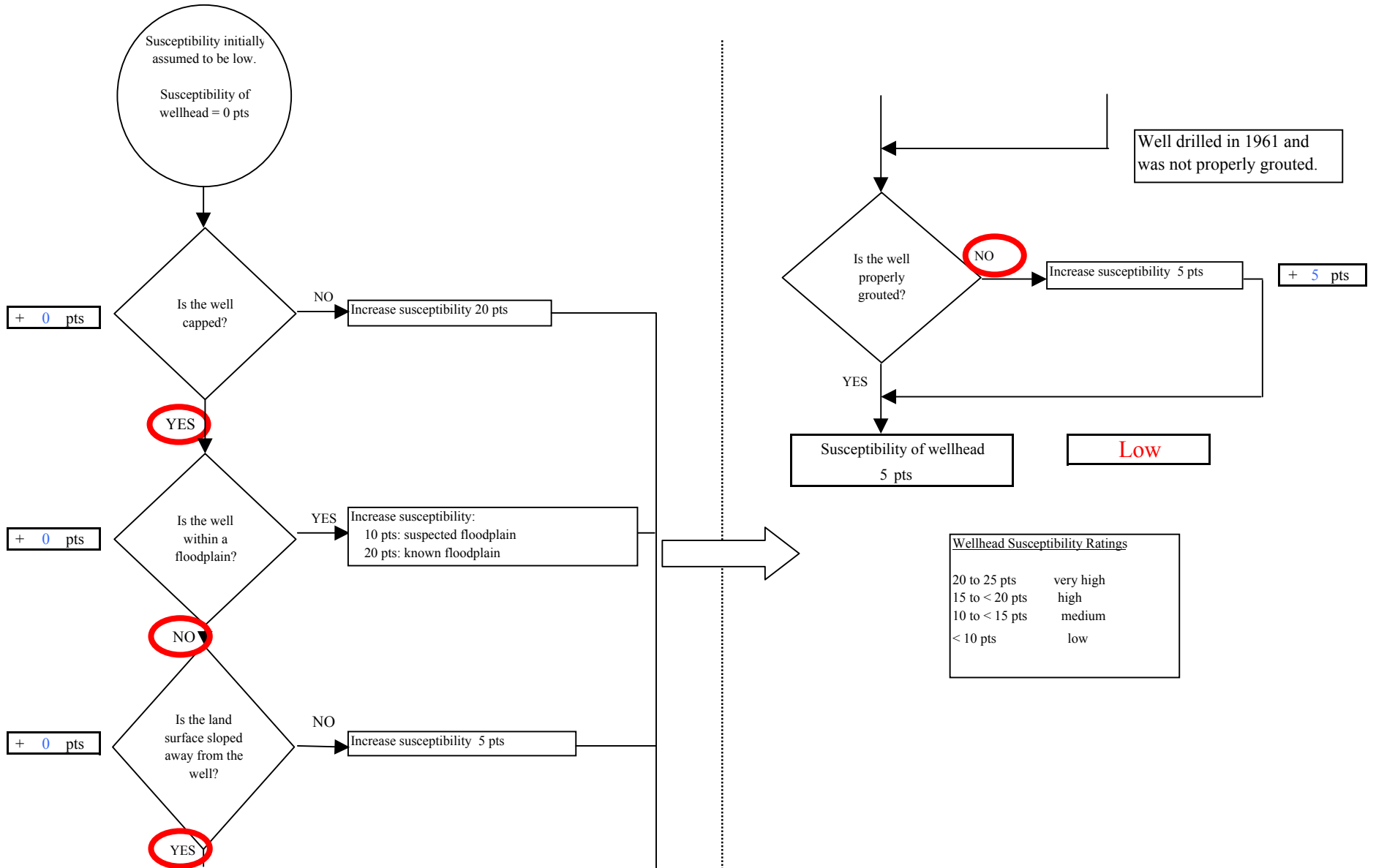


Chart 2. Susceptibility of the aquifer - Puffin Inn

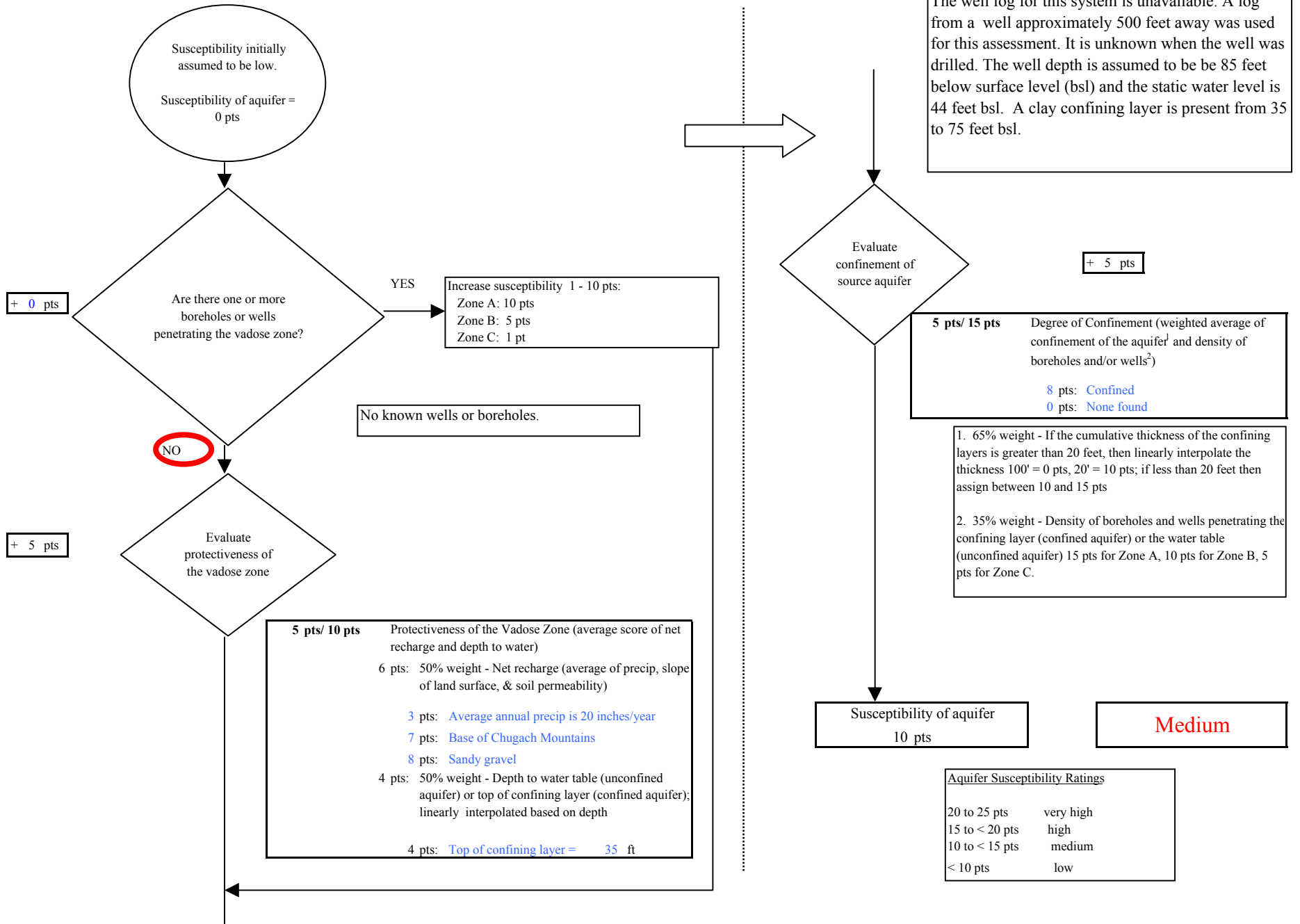
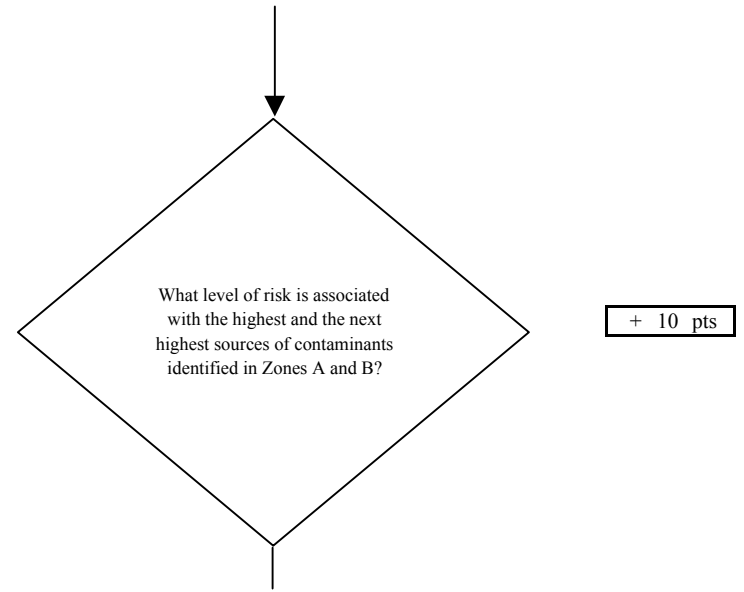
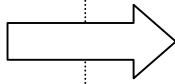
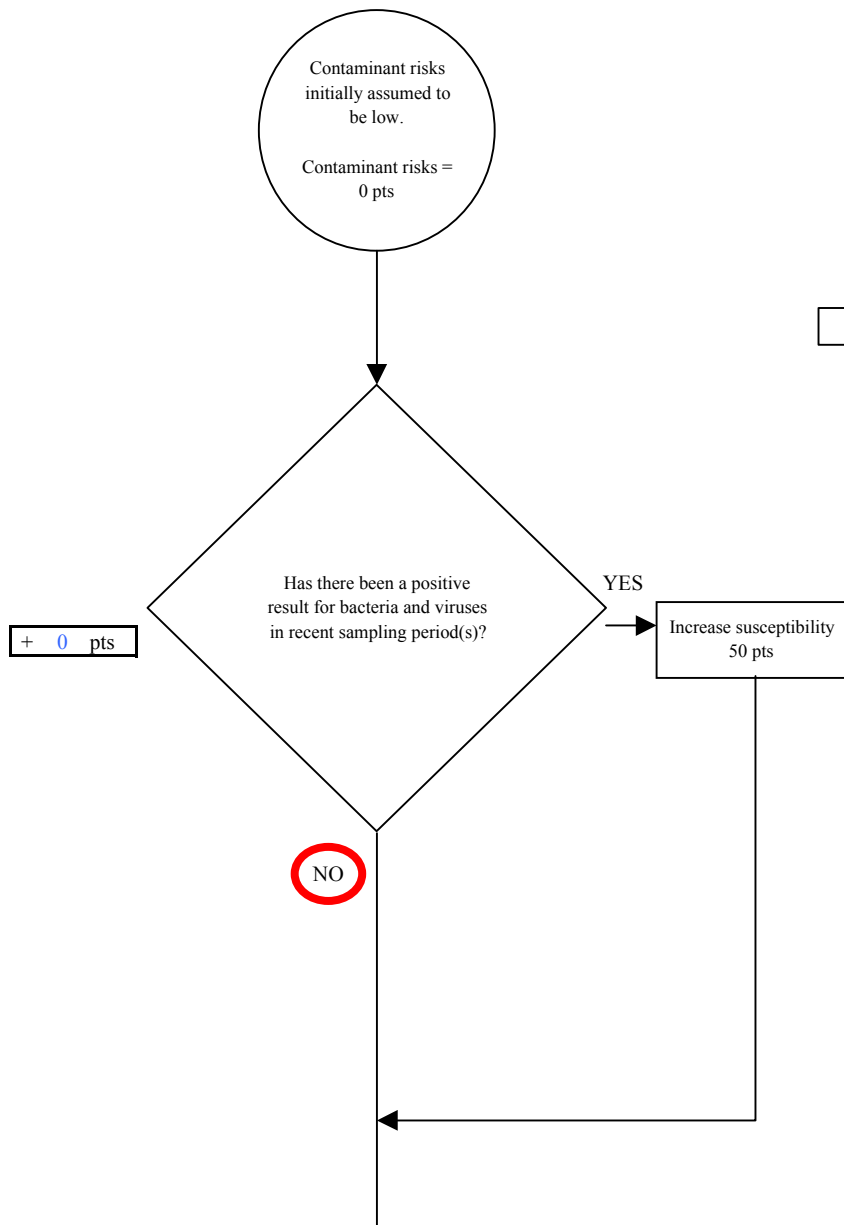


Chart 3. Contaminant risks for Puffin Inn- Bacteria & Viruses



Risk Rankings for Contaminant Sources Identified in Zones A and B

	Zone A	Zone B	Total
Very High(s)	0	0	0
High(s)	0	0	0
Medium(s)	0	0	0
Low(s)	4	2	6

	LOW 10 pts	MEDIUM 20 pts	HIGH 30 pts	VERY HIGH 40 pts
LOW	≥ 10 sources + 10 pts	≥ 10 sources + 5 pts	≥ 20 sources + 5 pts	----
MEDIUM	----	≥ 2 sources + 5 pts	≥ 5 sources + 5 pts	≥ 10 sources + 5 pts
HIGH	----	----	≥ 1 source + 10 pts	≥ 2 sources + 10 pts
VERY HIGH	----	----	----	≥ 1 source + 10 pts

Matrix Score 10

Note: Septic systems, sewerlines, and roads are each assigned a risk ranking for each individual contaminant source in the CSI. The VA, however, counts these contaminant sources as a group and assigns a calculated number of either "lows" or "mediums" based on the density.

Chart 3. Contaminant risks for Puffin Inn- Bacteria & Viruses

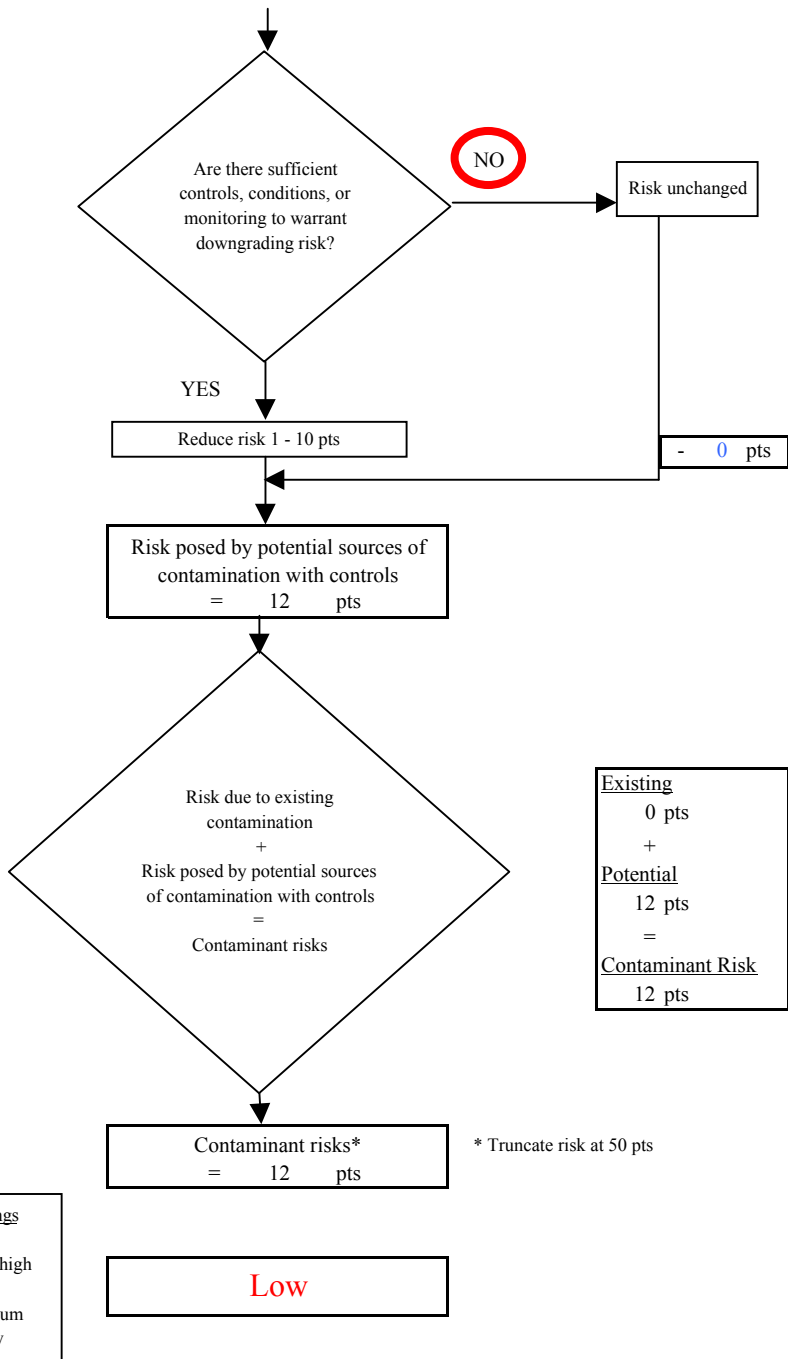
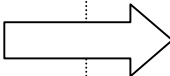
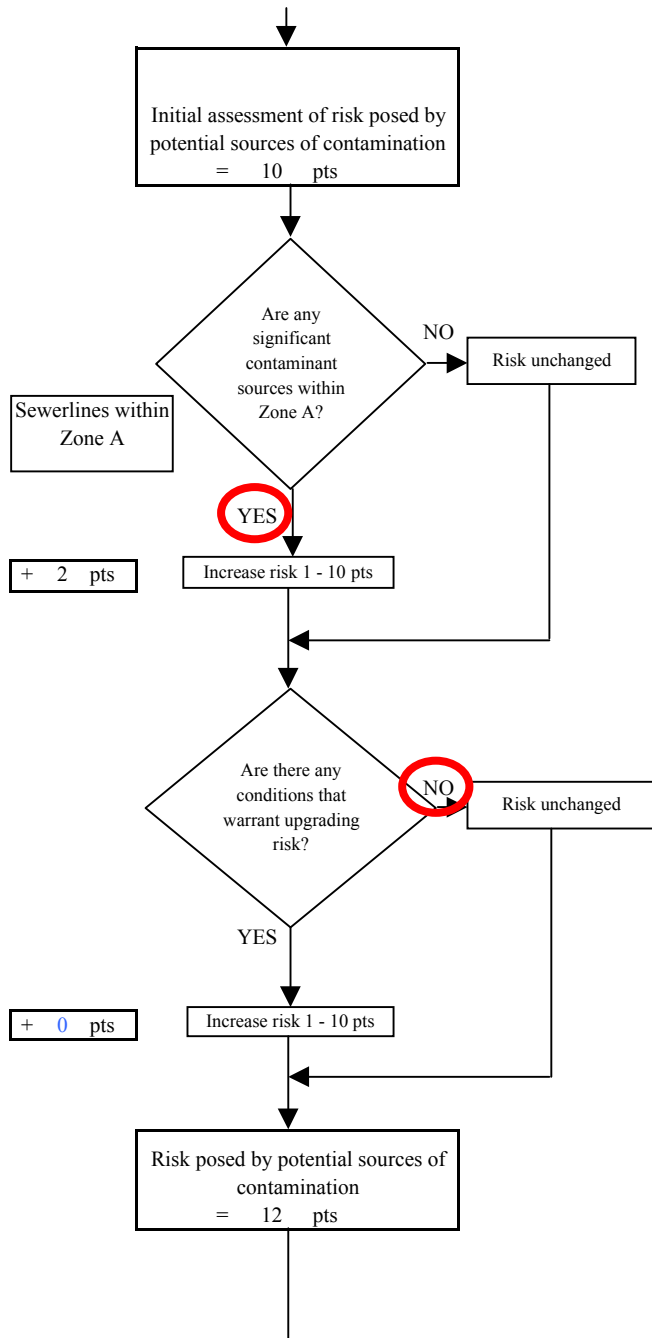


Chart 4. Vulnerability analysis for Puffin Inn- Bacteria & Viruses

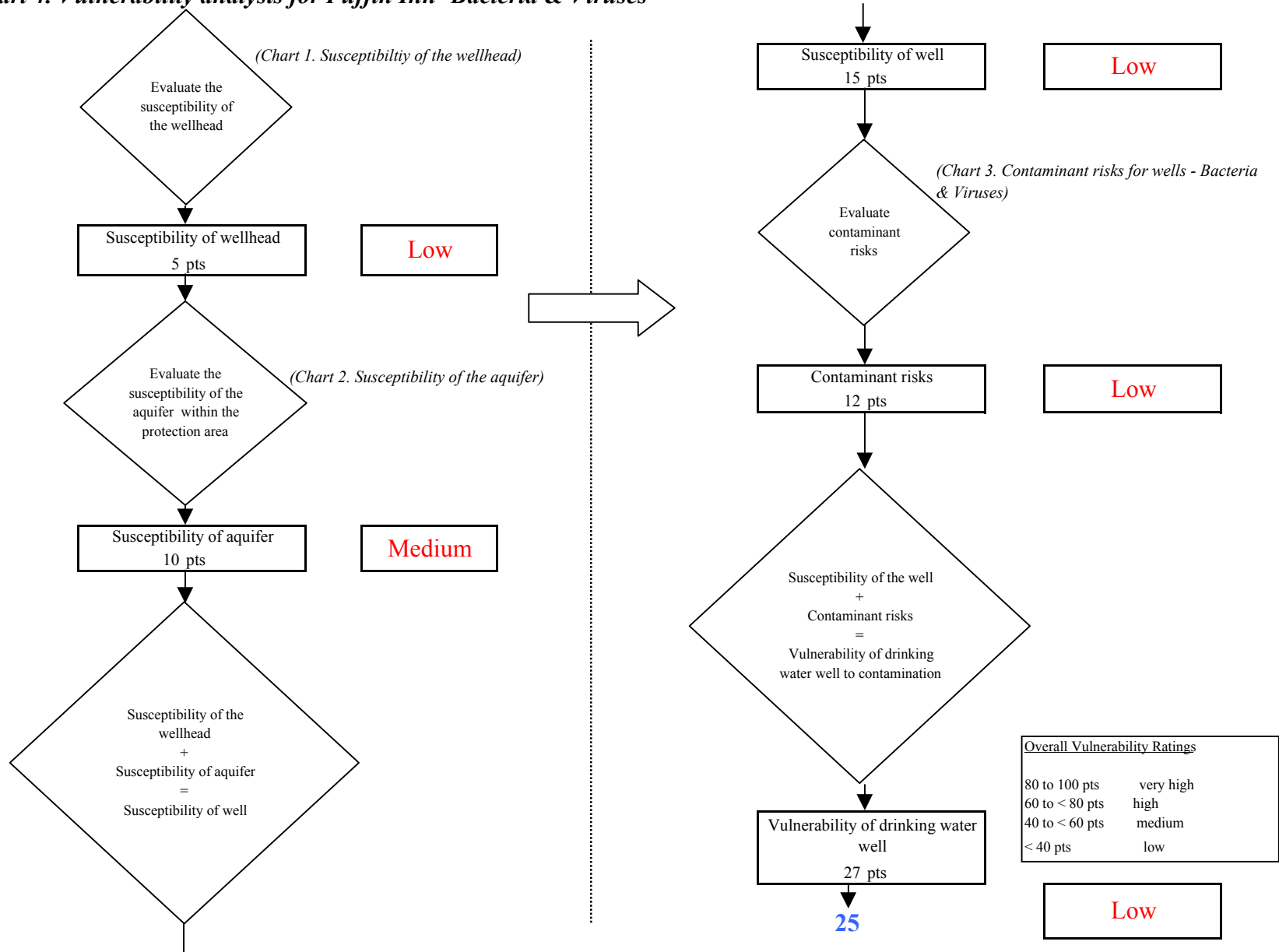


Chart 5. Contaminant risks for Puffin Inn- Nitrates and Nitrites

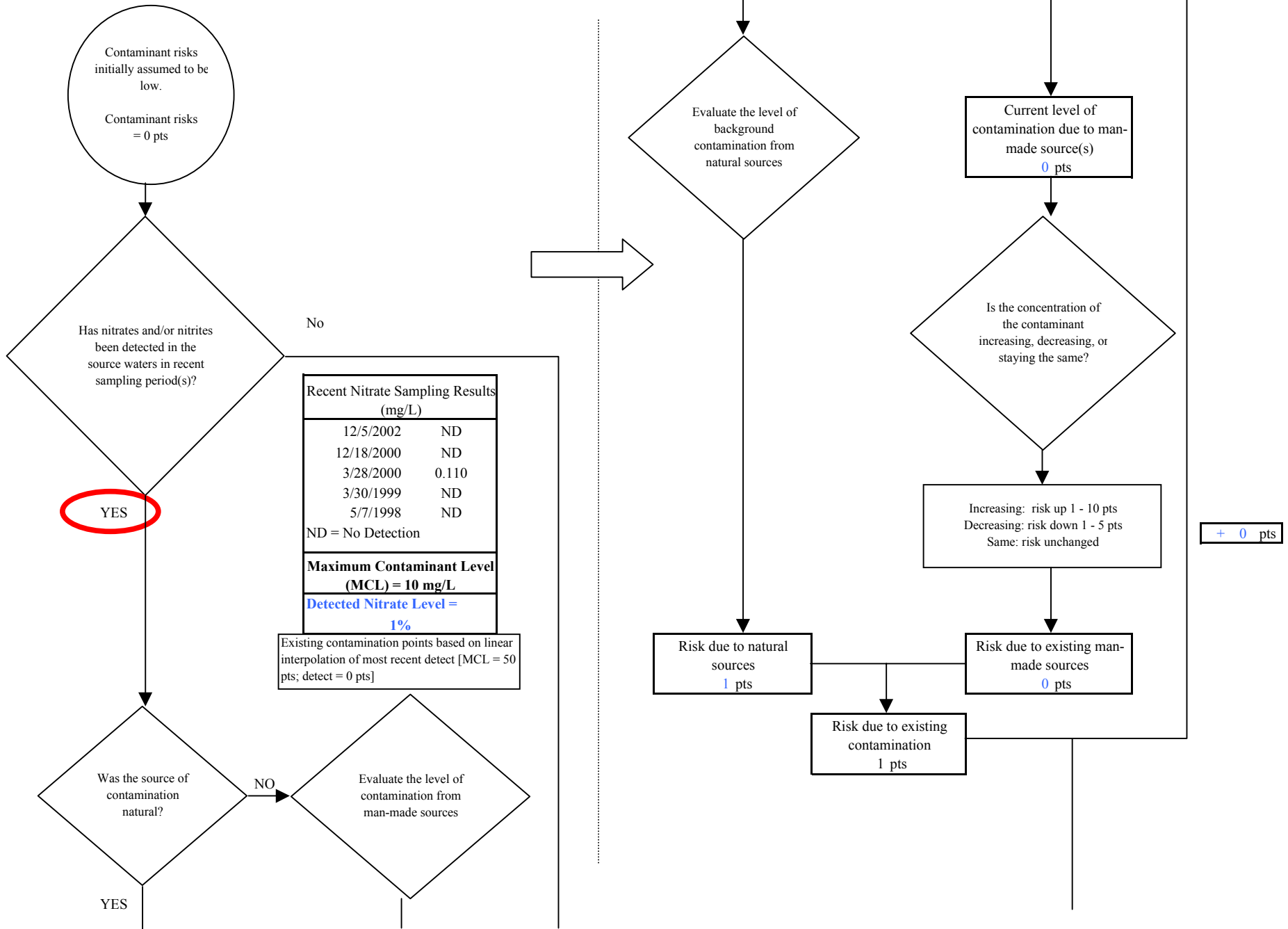
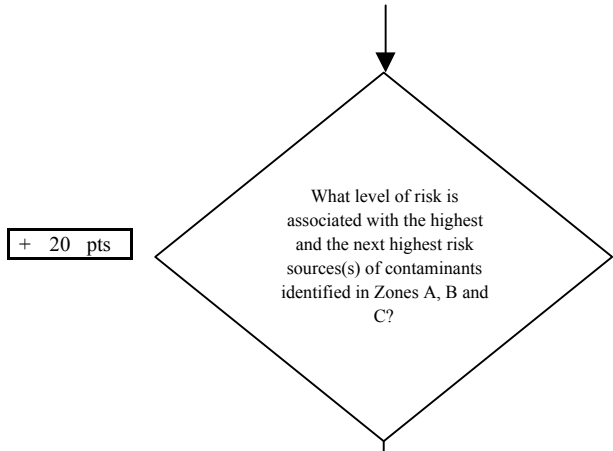


Chart 5. Contaminant risks for Puffin Inn- Nitrates and Nitrites



+ 20 pts

Risk Levels for Contaminant Sources identified in Zones A, B and C			
	Zone A	Zones B&C	Total
Very Highs(s)	0	0	0
High(s)	0	0	0
Medium(s)	0	1	1
Low(s)	4	2	6

	LOW 10 pts	MEDIUM 20 pts	HIGH 30 pts	VERY HIGH 40 pts
LOW	≥ 10 sources + 10 pts	≥ 10 sources + 5 pts	≥ 20 sources + 5 pts	----
MEDIUM	----	≥ 2 sources + 5 pts	≥ 5 sources + 5 pts	≥ 10 sources + 5 pts
HIGH	----	----	≥ 1 source + 10 pts	≥ 2 sources + 10 pts
VERY HIGH	----	----	----	≥ 1 source + 10 pts

Matrix Score 20

Note: Septic systems, sewerlines, and roads are each assigned a risk ranking for each individual contaminant source in the CSI. The VA, however, counts these contaminant sources as a group and assigns a calculated number of either "lows" or "mediums" based on the density.

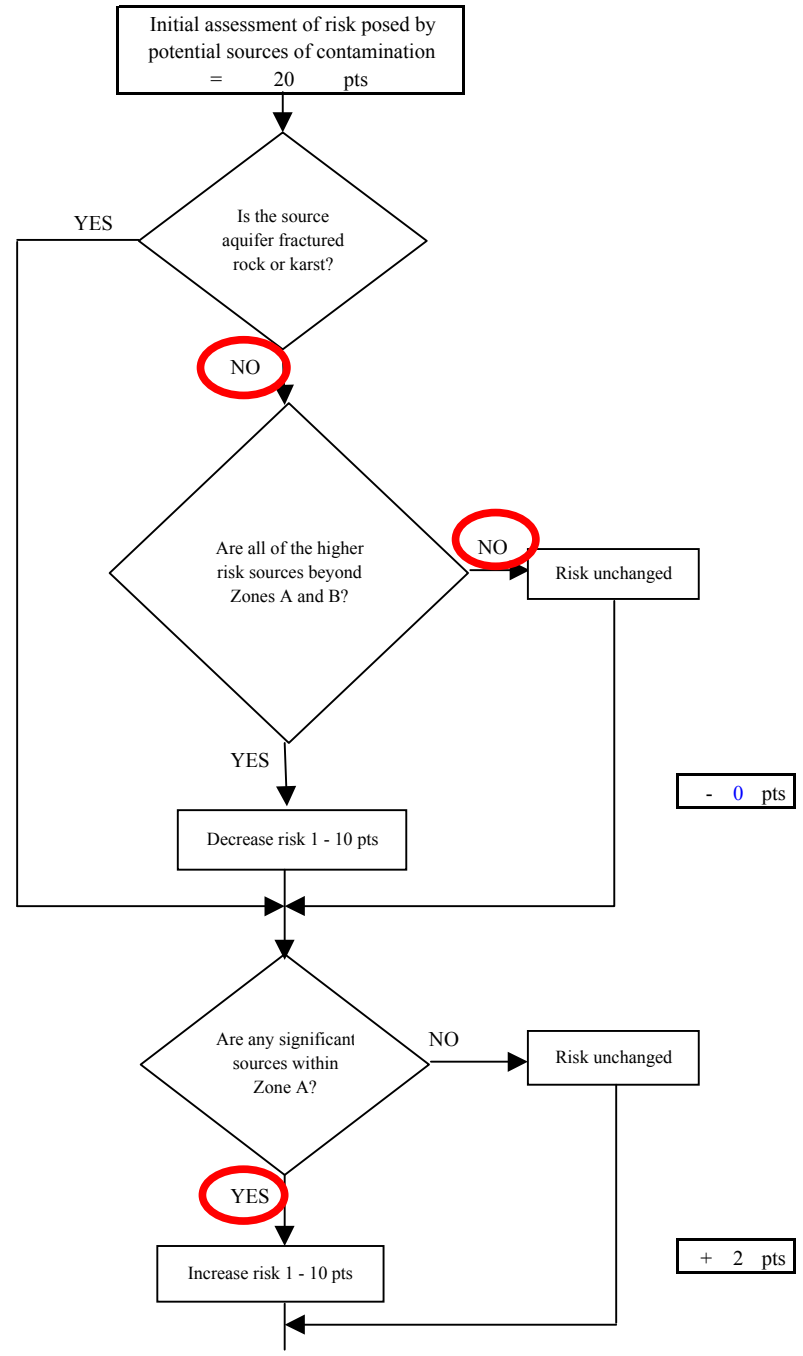
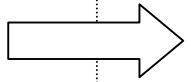


Chart 5. Contaminant risks for Puffin Inn- Nitrates and Nitrites

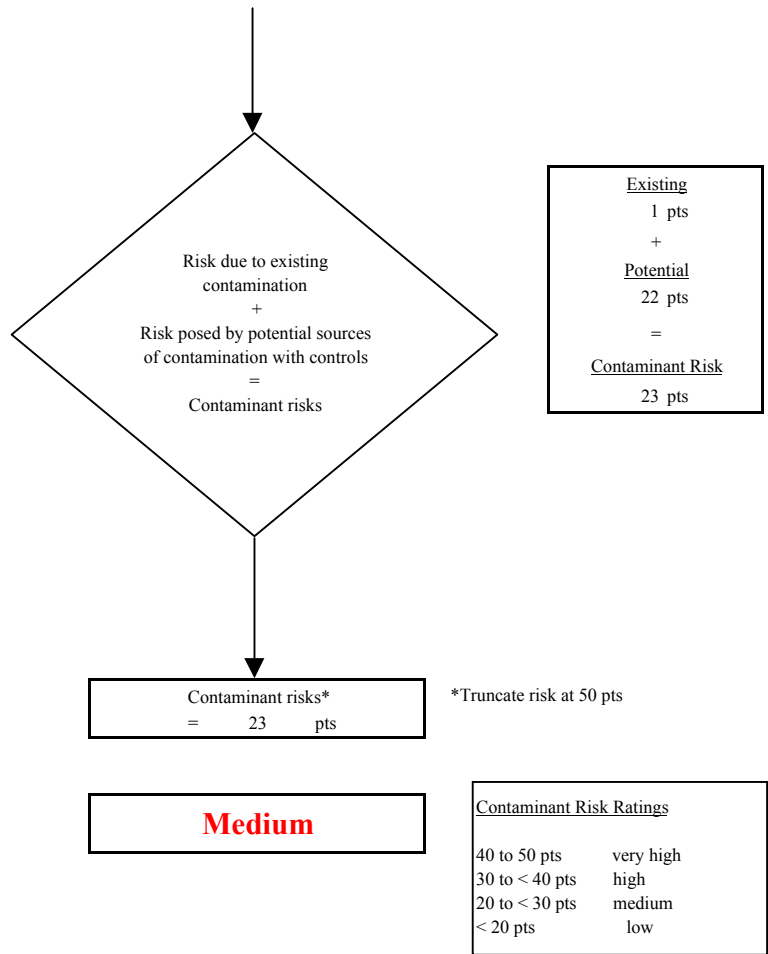
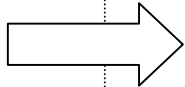
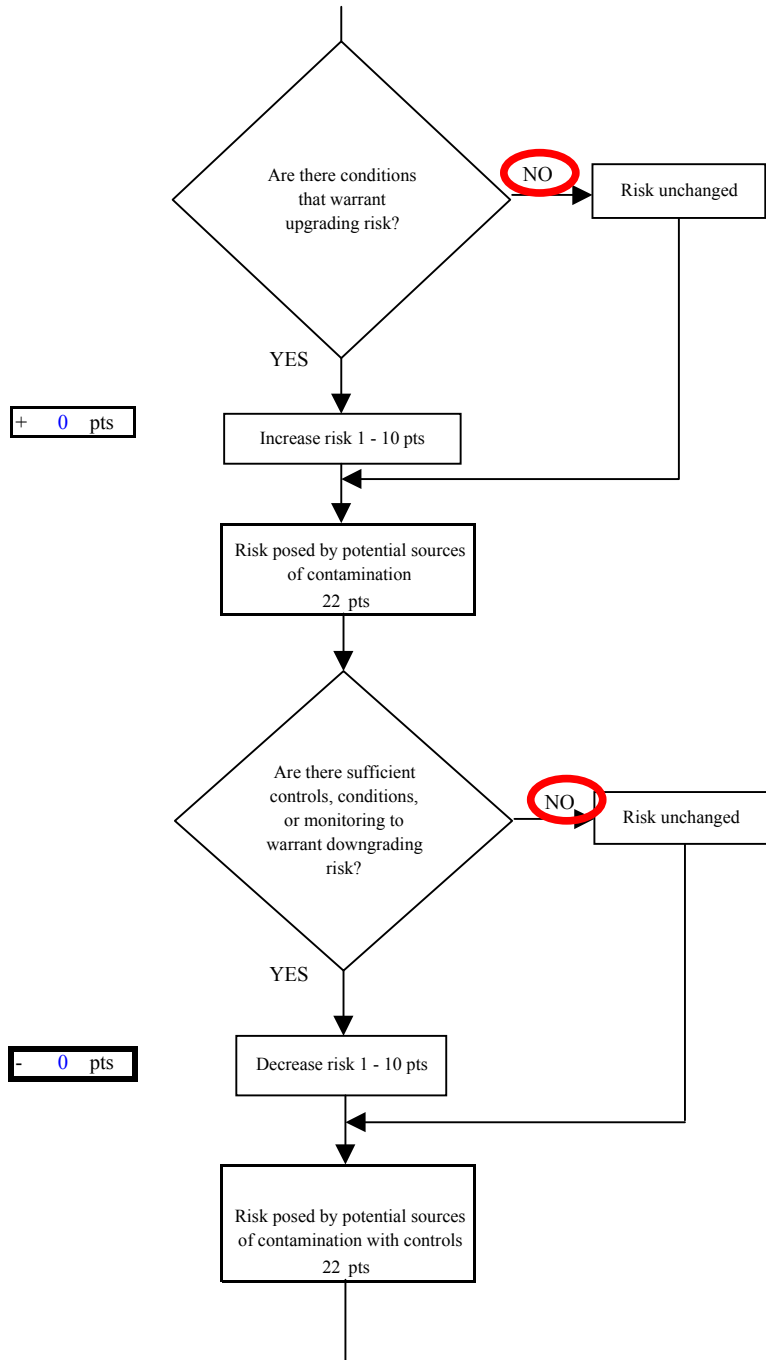


Chart 6. Vulnerability analysis for Puffin Inn- Nitrates and Nitrites

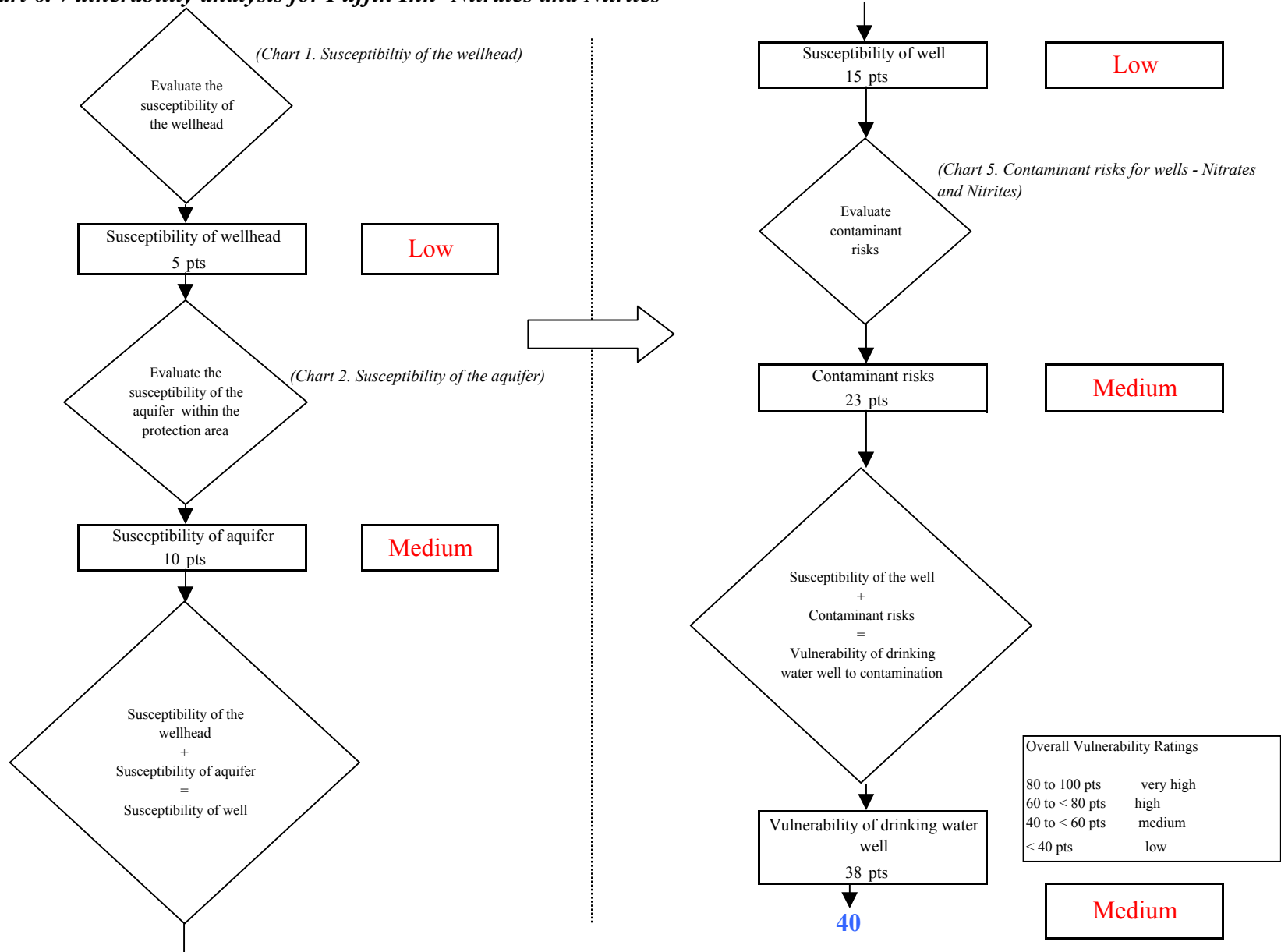


Chart 7. Contaminant risks for Puffin Inn- Volatile Organic Chemicals

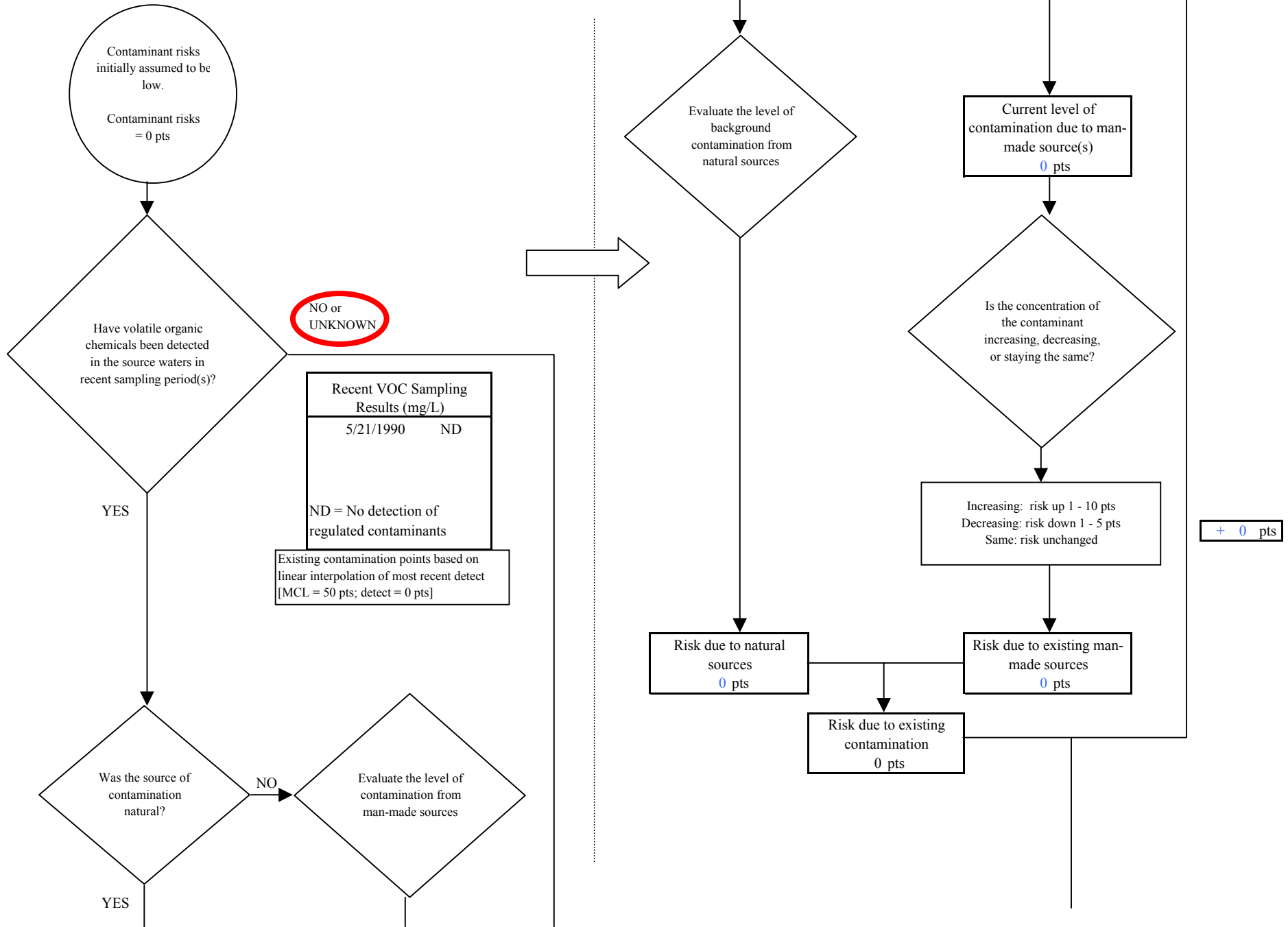
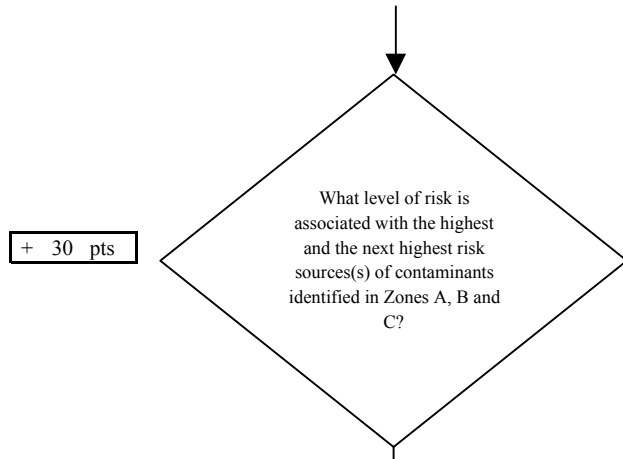


Chart 7. Contaminant risks for Puffin Inn- Volatile Organic Chemicals



Risk Levels for Contaminant Sources identified in Zones A, B and C			
	Zone A	Zones B&C	Total
Very High(s)	0	0	0
High(s)	1	0	1
Medium(s)	0	0	0
Low(s)	2	1	3

	LOW 10 pts	MEDIUM 20 pts	HIGH 30 pts	VERY HIGH 40 pts
LOW	≥ 10 sources + 10 pts	≥ 10 sources + 5 pts	≥ 20 sources + 5 pts	----
MEDIUM	----	≥ 2 sources + 5 pts	≥ 5 sources + 5 pts	≥ 10 sources + 5 pts
HIGH	----	----	≥ 1 source + 10 pts	≥ 2 sources + 10 pts
VERY HIGH	----	----	----	≥ 1 source + 10 pts

Matrix Score 30

Note: Septic systems, sewerlines, and roads are each assigned a risk ranking for each individual contaminant source in the CSI. The VA, however, counts these contaminant sources as a group and assigns a calculated number of either "lows" or "mediums" based on the density.

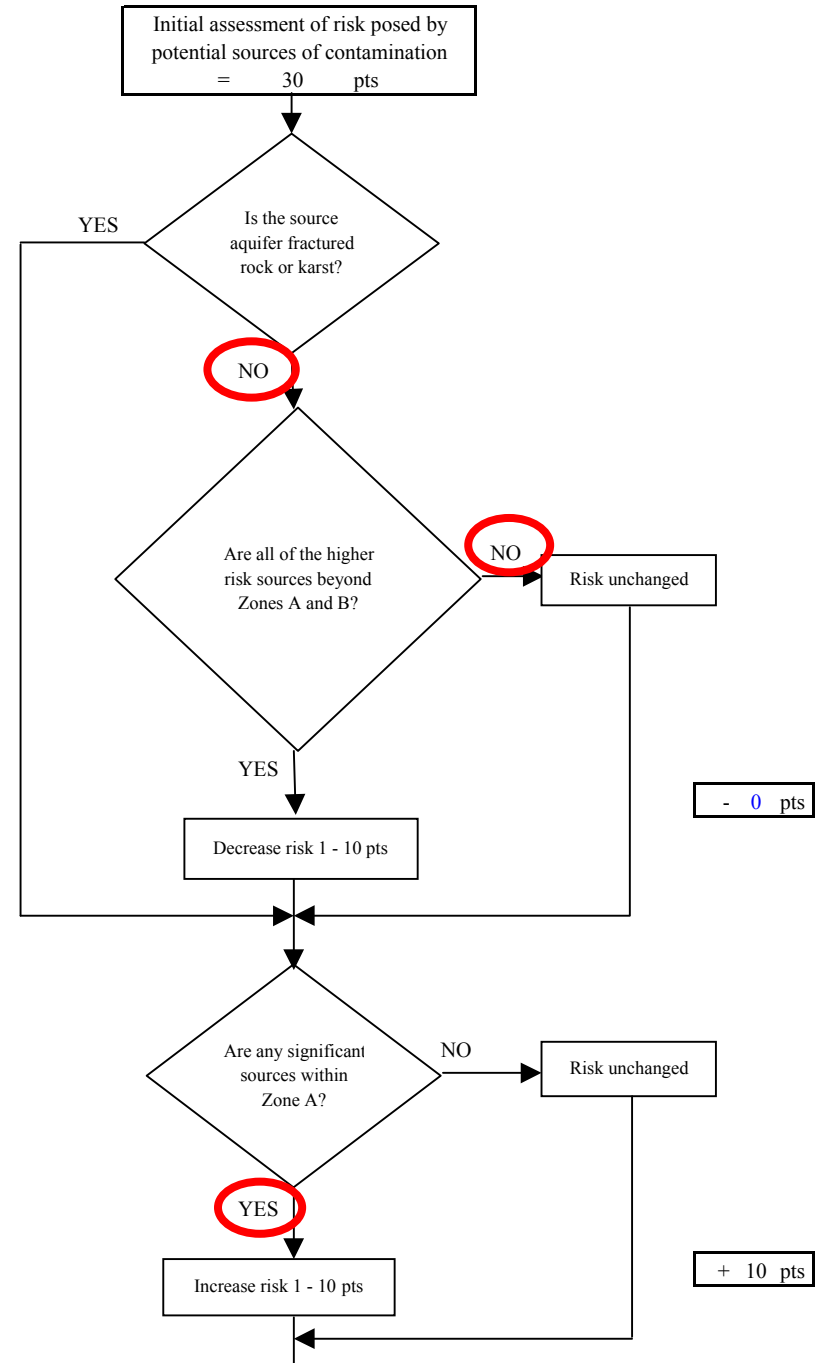
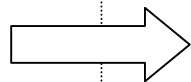


Chart 7. Contaminant risks for Puffin Inn- Volatile Organic Chemicals

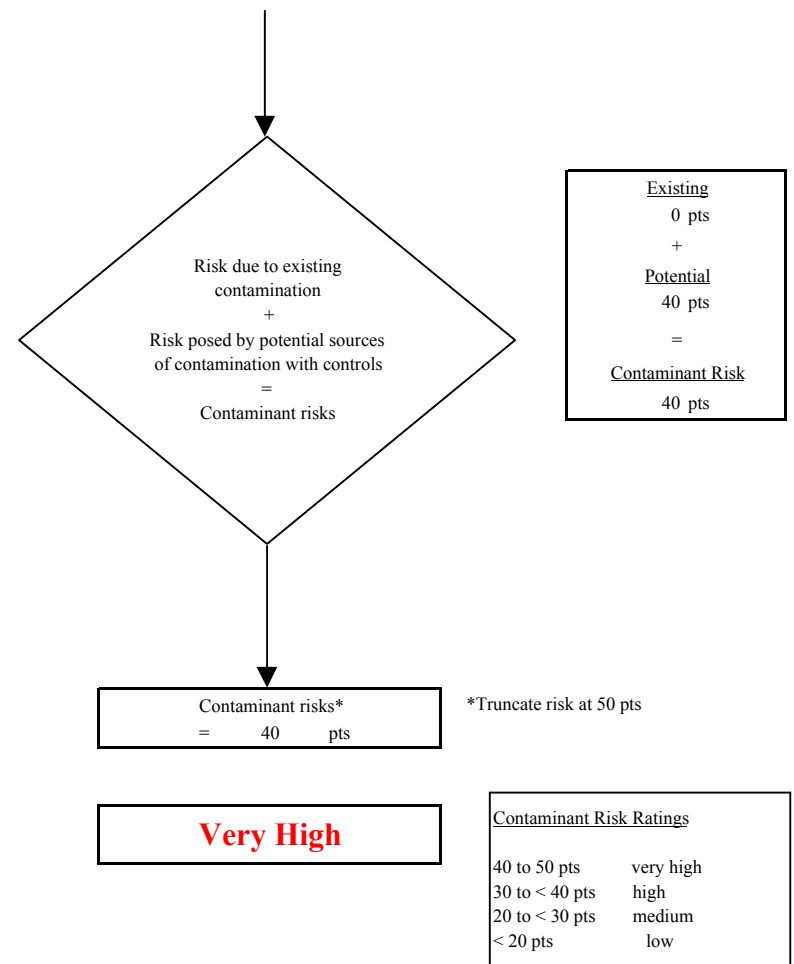
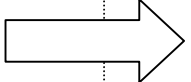
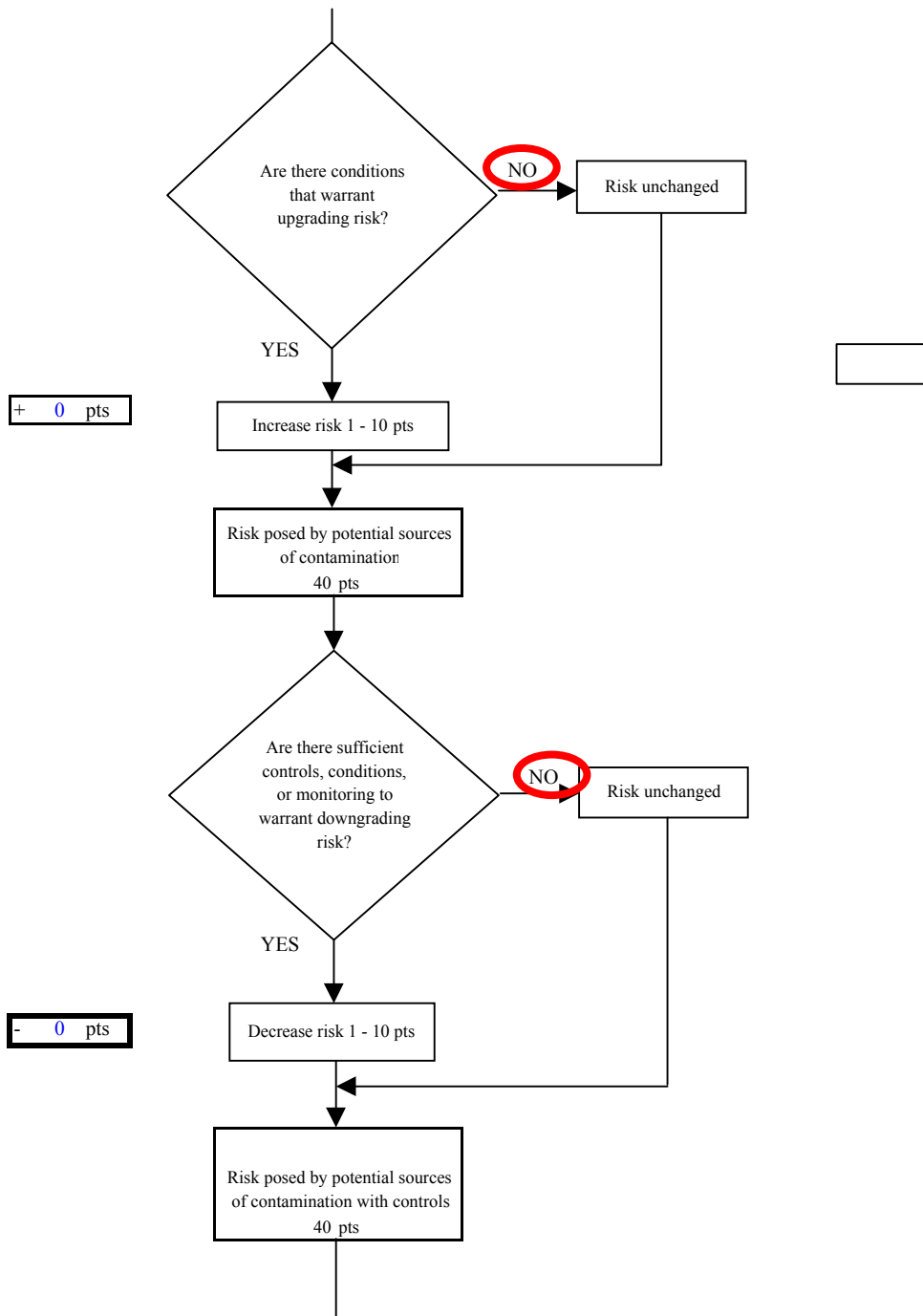


Chart 8. Vulnerability analysis for Puffin Inn- Volatile Organic Chemicals

