

DEPARTMENT OF THE INTERIOR
ALASKAN ENGINEERING COMMISSION

— MAP —

— OF —

DEFINITE LOCATION "A" LINE

— FROM —

GLACIER CREEK TO FALLS CREEK

STATION "H" 1258+00 TO "A" 2204+00

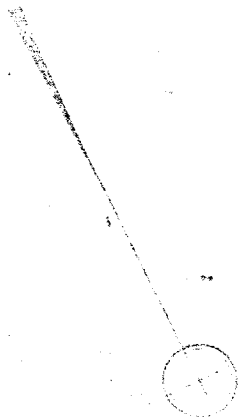
SCALE: 1 INCH = 400 FEET

TURNAGAIN ARM DISTRICT

DEC. 1916.

1/2 INCH
1/4 INCH

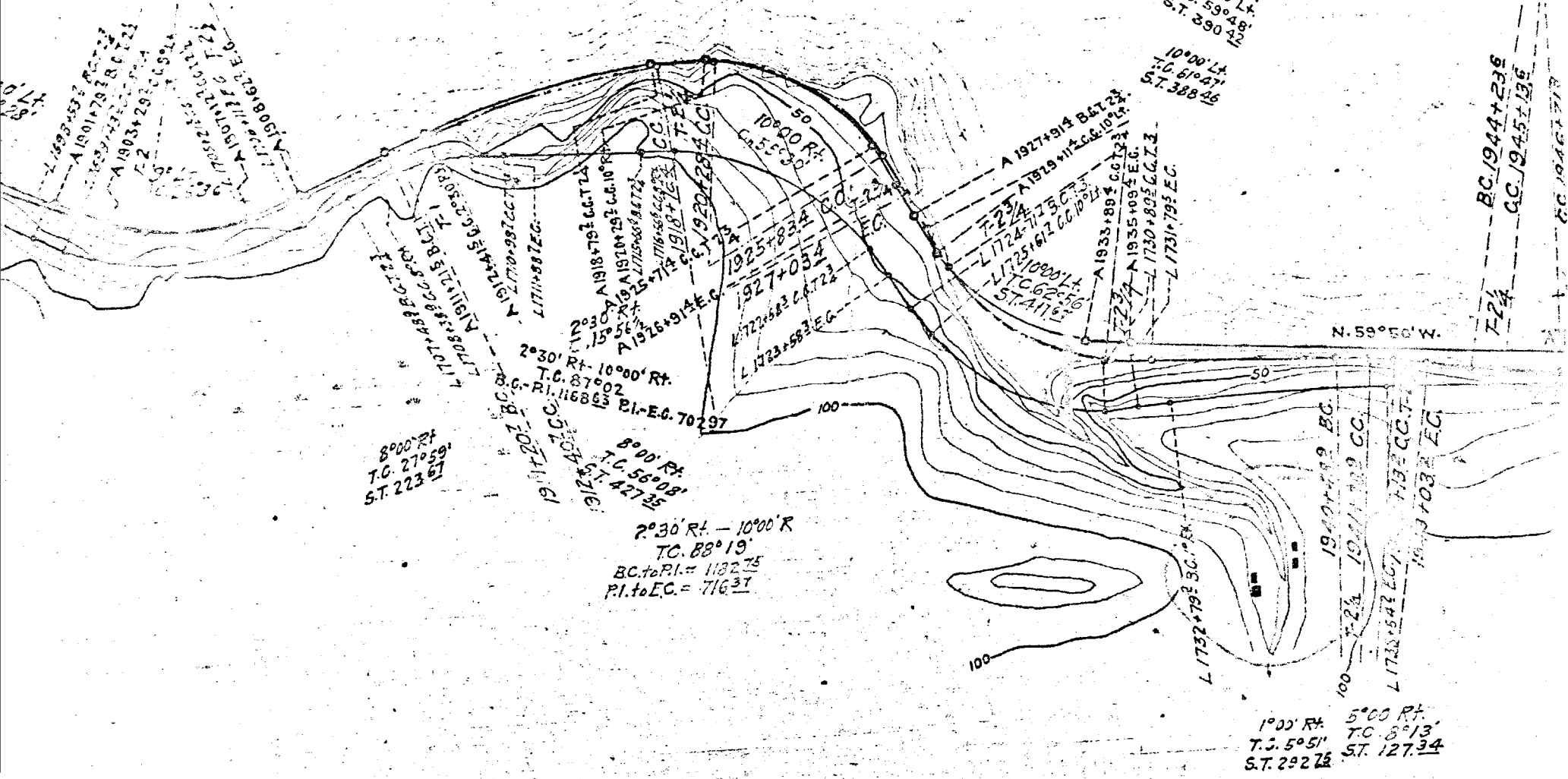
1/2 INCH
1/4 INCH



8°00' Lt.
T.C. 47°08'
S.T. 353.148

BC
CC
10°00' Lt.
T.C. 59°48'
S.T. 390.42

T.C. 12
ST. 16



8°00' Rt.
T.C. 27°59'
S.T. 223.67

2°30' Rt. - 10°00' Rt.
T.C. 87°02'
R.I. 116863
1917+2016 CC
1917+2016 CC
1917+2016 CC

8°00' Rt.
T.C. 58°08'
S.T. 427.35

2°30' Rt. - 10°00' R.
T.C. 88°19'
BC to PI = 1132.75
PI to EC = 716.37

A. 1927+919 B&T 24
F. 23
L. 1724+775 CC
L. 1725+612 CC
S.T. 411.9

10°00' Lt.
T.C. 61°47'
S.T. 388.46

N. 59°50' W.

1°00' Rt. 5°00' Rt.
T.C. 5°51' T.C. 8°13'
S.T. 292.25 S.T. 127.34

BC 1944+236
CC 1945+196
F. 24
EC 1946+379

4 ~~cabins~~ CABINS BETWEEN GIERWOOD AND BIRD CREEK

SAD