

DEPARTMENT OF THE INTERIOR
ALASKAN ENGINEERING COMMISSION

— MAP —

— OF —

DEFINITE LOCATION "A" LINE

— FROM —

GLACIER CREEK TO FALLS CREEK

STATION "H" 1238+00 TO "A" 2204+00

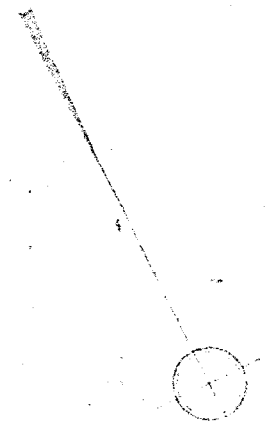
SCALE: 1 INCH = 400 FEET

TURNAGAIN ARM DISTRICT

DEC 1916.

EA. HERRON
Dist. Engr.

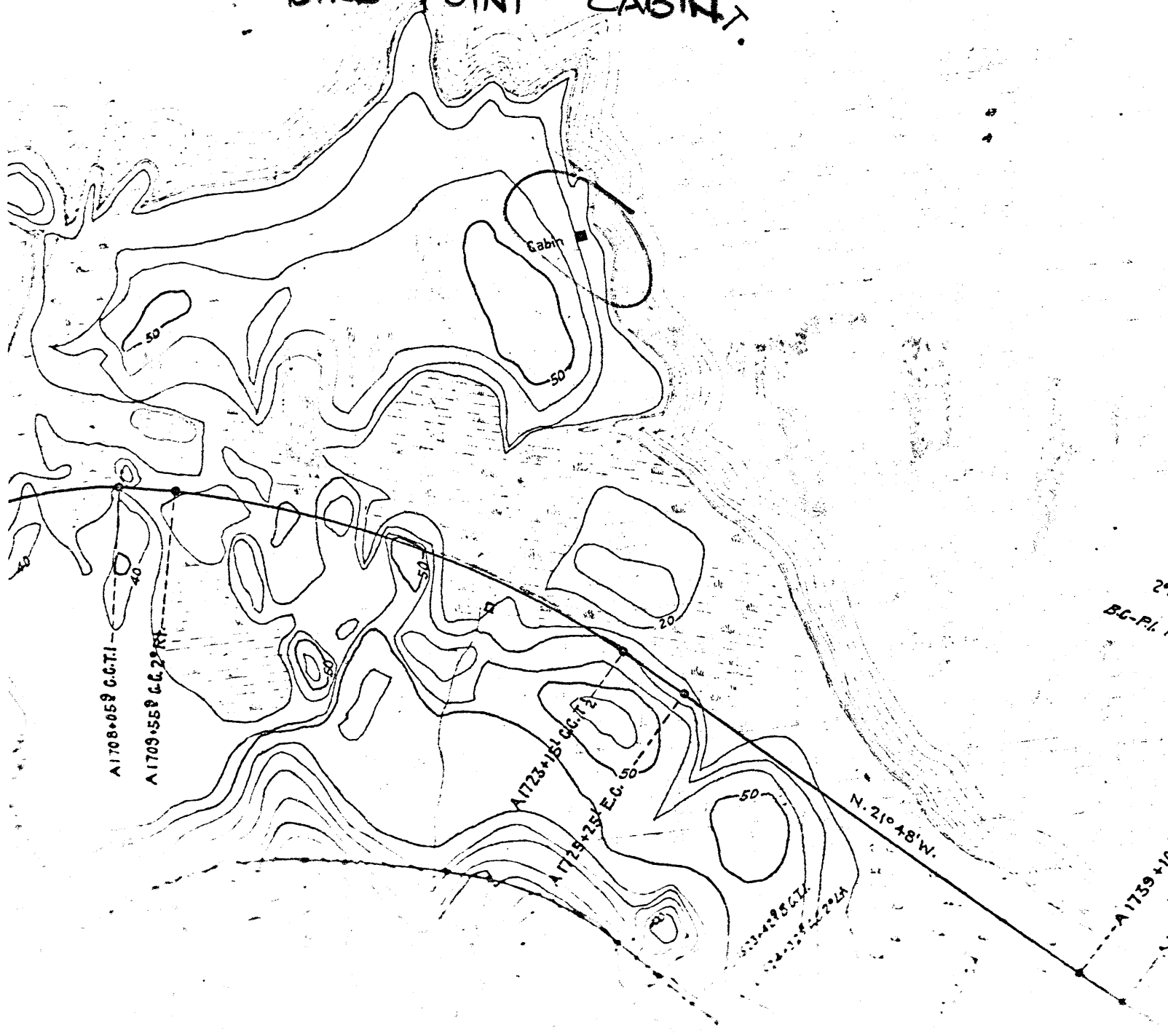
T. G. CHASE
Dist. Engr.



BIRD POINT CABIN.

N

M



2°00' Lt. - 1°00' Lt. - 4°00' Lt.
 T.C. 37°11'
 B.C. - P.I. 1214 33 P.I. - E.C. 935 59.

3°00' Lt.
 T.C. 10°34'
 S.T. 251 67