

DEPENDENT RESURVEY OF  
 U. S. SURVEY  
 No. 1726, ALASKA

SITUATED  
 AT KNIK, ALASKA

GEODETIC POSITION  
 OF WITNESS MEANDER CORNER NO. 13  
 LATITUDE 61°27.4' NORTH, LONGITUDE 149°44.0' WEST

AREA RESURVEYED: 45.49 ACRES

SURVEYED BY:  
 RALPH J. ELLIS, SUPERVISORY CADASTRAL SURVEYOR  
 AND  
 RICHARD K. DeCAME, CADASTRAL SURVEYOR  
 OCTOBER 7, 1968 TO OCTOBER 16, 1968

Under Supplemental Special Instructions  
 Dated August 28, 1968, and  
 Approved August 30, 1968

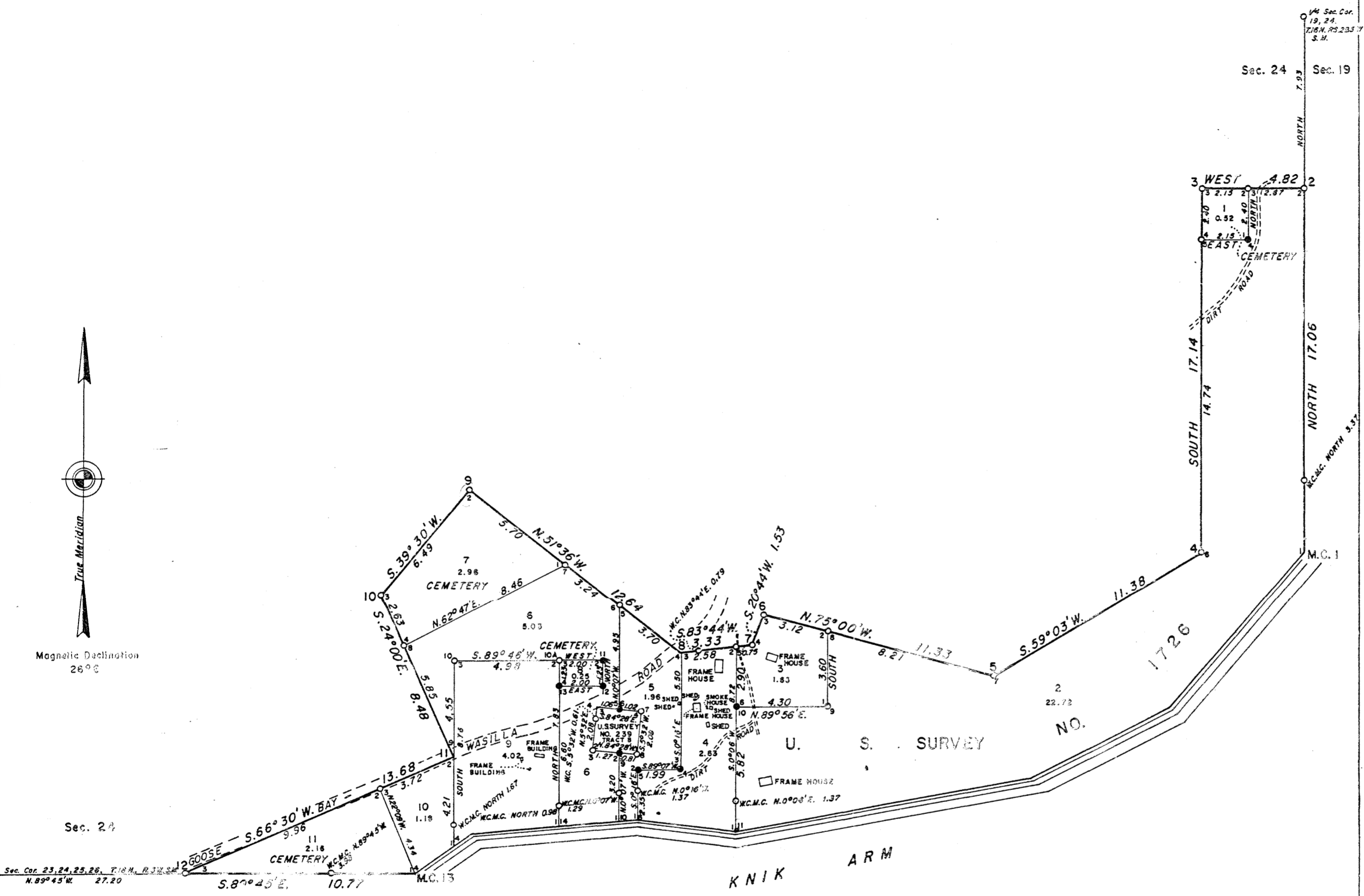
UNITED STATES DEPARTMENT OF THE INTERIOR  
 BUREAU OF LAND MANAGEMENT  
 Washington, D. C. July 25, 1969

This plat is strictly conformable to the approved field notes, and the survey, having been correctly executed in accordance with the requirements of law and the regulations of this Bureau, is hereby accepted.

For the Director

*Clark I. Sumner*

Chief, Division of Cadastral Survey



- BRASS CAPPED IRON POST
- COPPERWELDED MONUMENT

