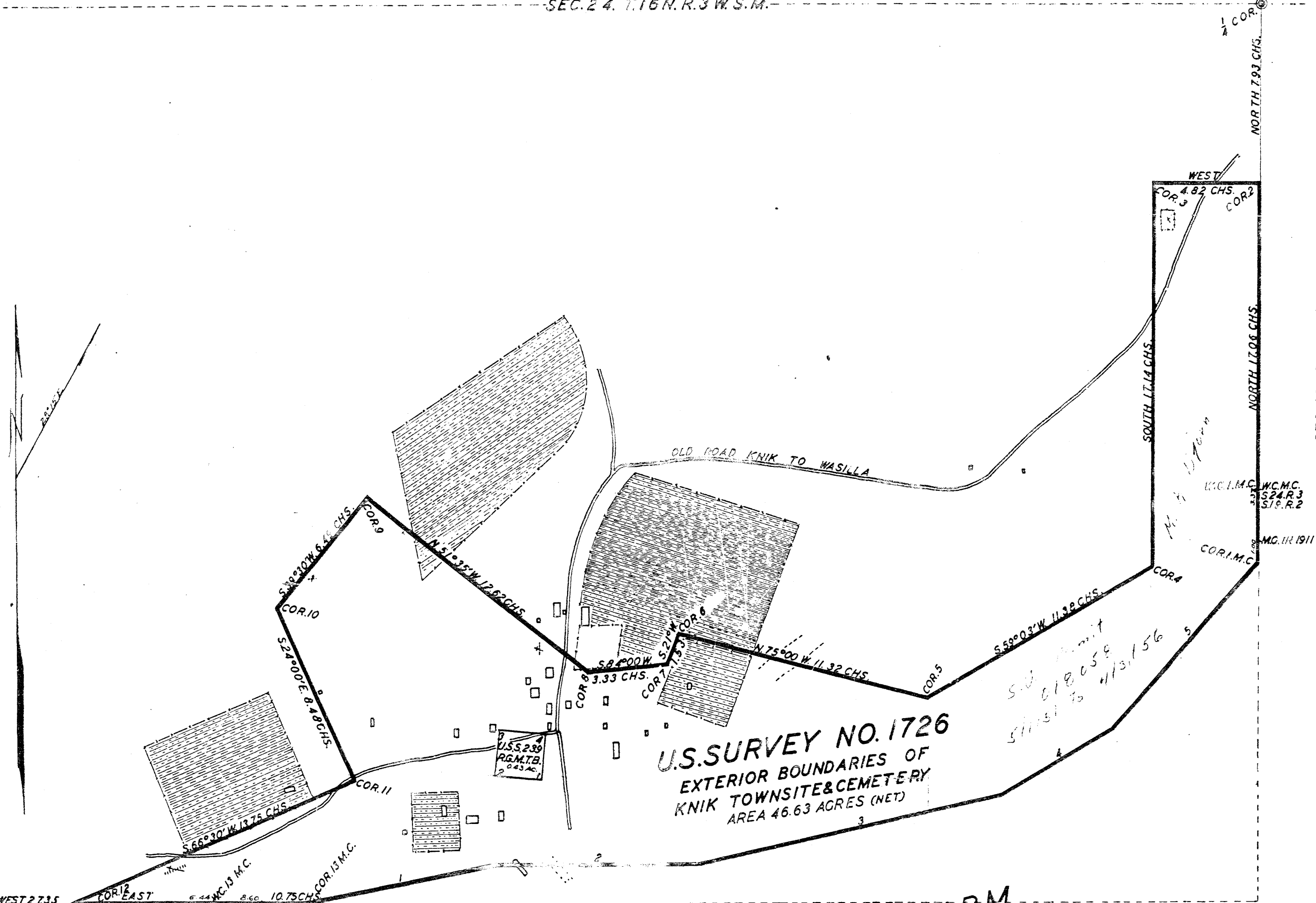


SEC. 24, T. 16 N. R. 3 W. S. M.



SEC. 25

MEANDERS
From Cor. No. 13 M. C.

1 - N. 77° 45' E.	0.40 Chs.
2 - S. 69° 30' E.	0.75 "
3 - N. 77° 15' E.	13.64 "
4 - N. 58° 45' E.	0.86 "
5 - N. 40° 45' E.	9.73 "
To Cor. 1 M.C.	

PLAT
of
U.S. SURVEY NO. 1726

of
EXTERIOR BOUNDARIES OF KNIK TOWNSITE AND CEMETERY
Executed under the provisions of the Act of Congress
approved June 20, 1910

Situate
In Sec. 24, T. 16 N. R. 3 W. S. M. toward
Meridian
TERRITORY OF ALASKA
Latitude 61° 27' 17" N.; Longitude 149° 47' 25" W.

Scale: 1/4 chains to the inch
Declination 2° 15' E.
Net area, 46.63 acres

As executed by W. D. CALVIN, U.S. CADASTRAL ENGINEER
June 21-23, 1926

CERTIFICATE OF APPROVAL
PUBLIC SURVEY OFFICE

Juneau, Alaska, March 4, 1932.

The original field notes of U.S. Survey No. 1726, Exterior Boundaries of Knik Townsite and Cemetery, from which this plat has been made, have been examined and approved, and I hereby certify that they furnish such an accurate description of said claim as will, if incorporated into a patent, serve fully to identify the premises, and that such reference is made therein to natural objects and permanent monuments, as will perpetuate and fix the locus thereof.

And I further certify that this is a correct plat of said claim, made in conformity with said original field notes of the survey thereof, and that the same is hereby approved.

W. D. Calvin
Cadastral Engineer in Charge.

DEPARTMENT OF THE INTERIOR
GENERAL LAND OFFICE
Washington, D. C., September 29, 1932.

The survey represented by this plat having been correctly executed in accordance with the requirements of law and the regulations of this office, is hereby accepted.

W. H. Staveland
Assistant Commissioner